



Radial Bond Log
Gamma-Ray
CCL

Company	BILL BARRET CORPORATION	
Well	PAPPENHEIM 6-62-23-0461BH	
Field	BRIGGSDALE	
County	WELD	State COLORADO
Location:	APL # : 05-123-37263	
SHL: 250' FNL & 1954' FWL NE/NW		Other Services
SEC 23 TWP 6N RGE 62W		
Permanent Datum GL KB 17' Elevation 4698'		
Log Measured From	KB 17'	Elevation KB, 4715'
Drilling Measured From	KB	D.F. 4714'
		G.L. 4698'

Date	9-16-2013
Run Number	ONE
Depth Driller	10664'
Depth Logger	5814'
Bottom Logged Interval	5814'
Top Log Interval	560'
Open Hole Size	8.375
Type Fluid	WATER
Density / Viscosity	1.0
Max. Recorded Temp.	181
Estimated Cement Top	
Time Well Ready	
Time Logger on Bottom	
Equipment Number	5432
Location	GREELEY
Recorded By	M. JANDREAU
Witnessed By	M. BEAUXIS

Borehole Record				Tubing Record			
Run Number	Bit	From	To	Size	Weight	From	To
ONE	0	845'	9 5/8	36	0	833'	
TWO	834'	6680'	7"	26	0	6651'	
THREE	6680'	10664'	4 1/2	11.6	5692'	10659'	
FOUR							
Casing Record	Size	Wgt/Ft	Top	Bottom			
Surface String	9 5/8	36	0	841			
Prot. String							
Production String	7	26	0	6651'			
Liner	4 1/2	11.6	5692'	10659			

<<< Fold Here >>>

All interpretations are opinions based on inferences from electrical or other measurements and we cannot and do not guarantee the accuracy or correctness of any interpretation, and we shall not, except in the case of gross or willful negligence on our part, be liable or responsible for any loss, costs, damages, or expenses incurred or sustained by anyone resulting from any interpretation made by any of our officers, agents or employees. These interpretations are also subject to our general terms and conditions set out in our current Price Schedule.

Comments

Correlated to Liner Hanger @ 5696'

THANK YOU FOR USING WARRIOR.

Sensor	Offset (ft)	Schematic	Description	Len (ft)	OD (in)	Wt (lb)

Tool Joint	Tool Joint Length (ft)	Tool Joint Weight (lb)	Tool Joint O.D. (in)	Tool Joint Description	Tool Joint Length (ft)	Tool Joint Weight (lb)	Tool Joint O.D. (in)	Tool Joint Description
HEADVOLT	16.25				PTS275	2.83	2.75	
IntTemp	14.83							
WVFS3FT	11.58				RBT-Probe (Base)	8.92	2.75	90.00
WVFCAL	11.58				Probe Radii Bond Tool with Digital Telemetry			
WVFS1	11.58							
WVFS2	11.58							
WVFS3	11.58							
WVFS4	11.58							
WVFS5	11.58							
WVFS6	11.58							
WVFS7	11.58							
WVFS8	11.58							
WVFS5FT	10.58							
CNLSC	6.00				CNT-Probe_B (275)	3.00	2.75	40.00
CNSSC	5.17				6 bow centralizer			
CCL	3.64							
					GR-Probe (275)	4.33	2.75	30.00
					Probe 2.75"			
GR	0.90							

Dataset:

pappenheim 06-62-23-0461bh.db: field/well/run1/pass2

Total Length:

19.08 ft

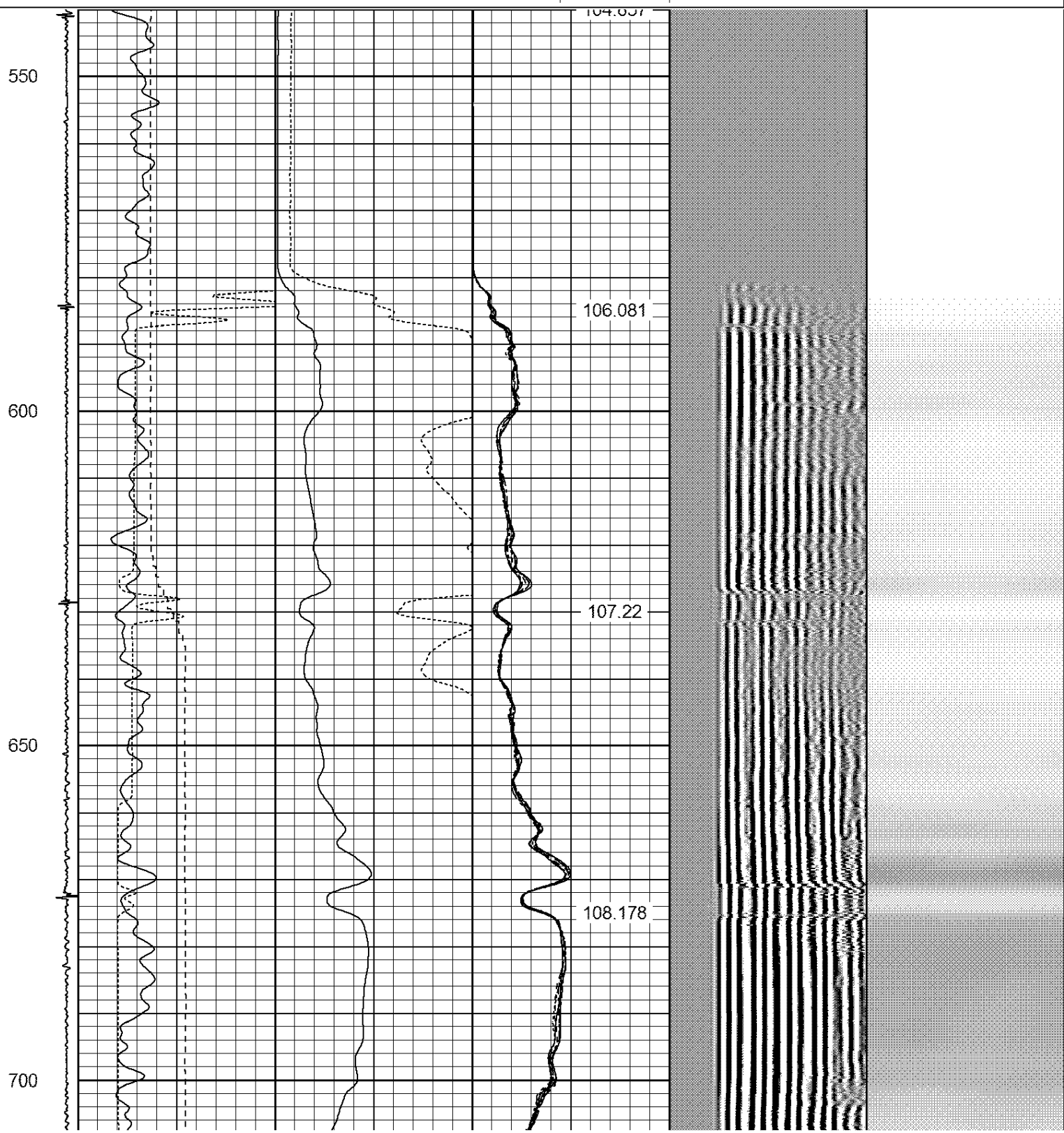
Total Weight:

160.00 lb

O.D.

2.75 in

-9	CCL	1	200	TT (usec)	800	0	AMP (mV)	100	0	AMPS1	100	200	VDL	1200	1	Cement Map	8
			0	GR (GAPI)	200	0	AMPx5 (mV)	20	0	AMPS2	100				1		100
			200	GR (GAPI)	400				0	AMPS4	100						
			0	LSPD (ft/min)	250				0	AMPS5	100						
									0	AMPS6	100						
									0	AMPS7	100						
									0	AMPS8	100						
										IntTemp							
										(degF)							



750

800

850

900

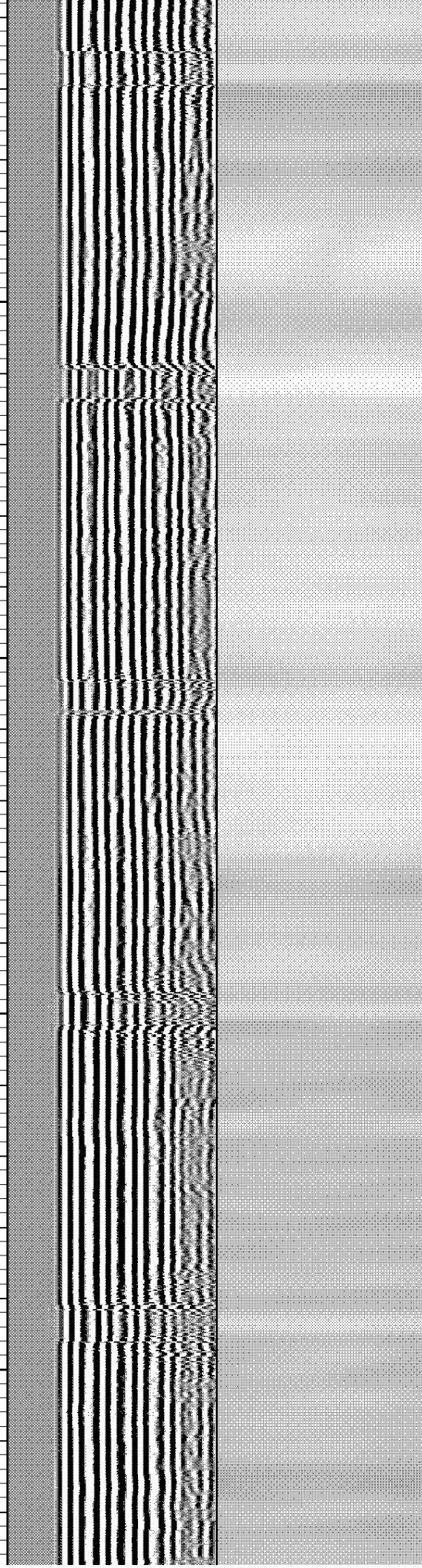
109.02

109.967

110.972

111.835

112.77



950

1000

1050

1100

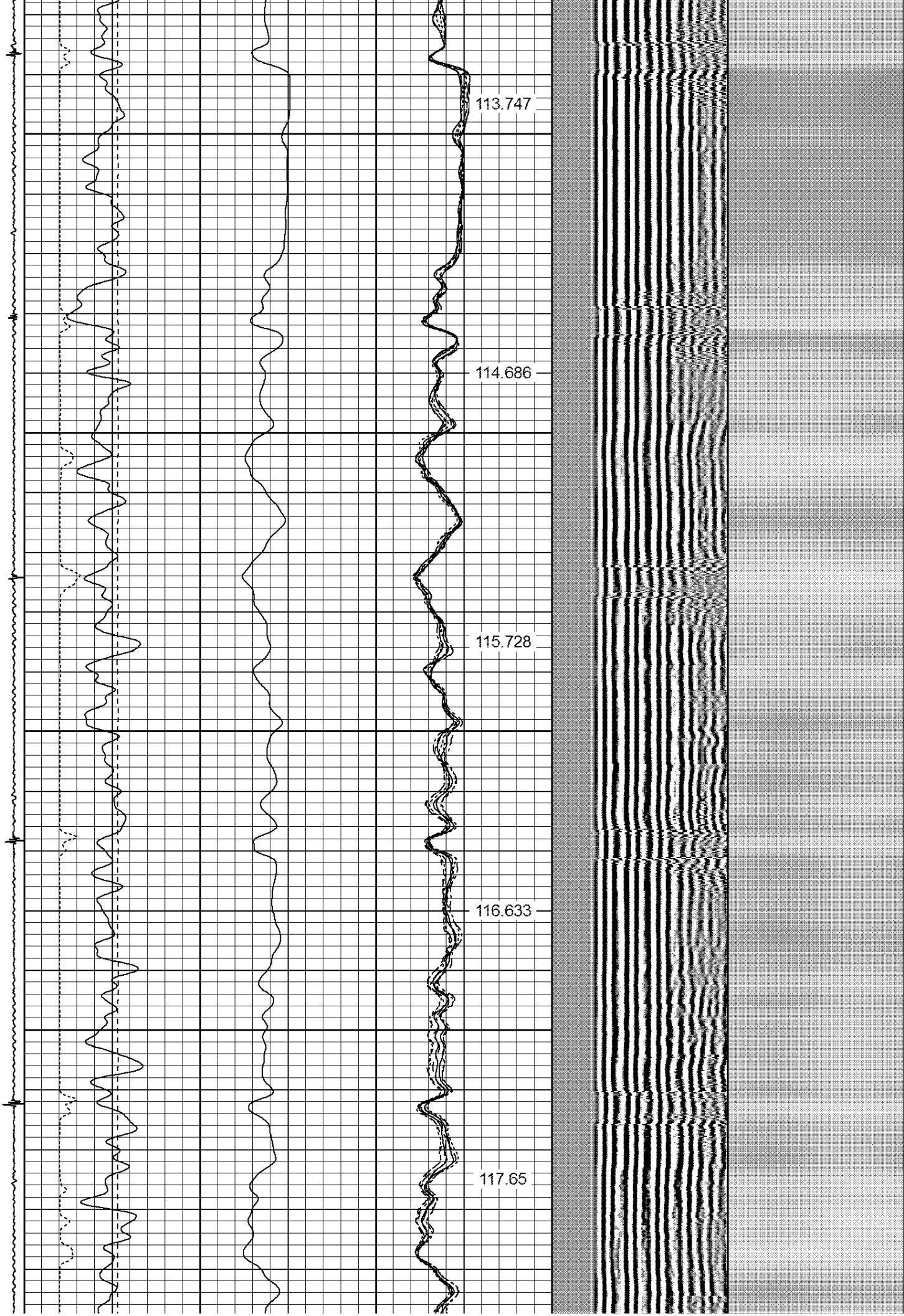
113.747

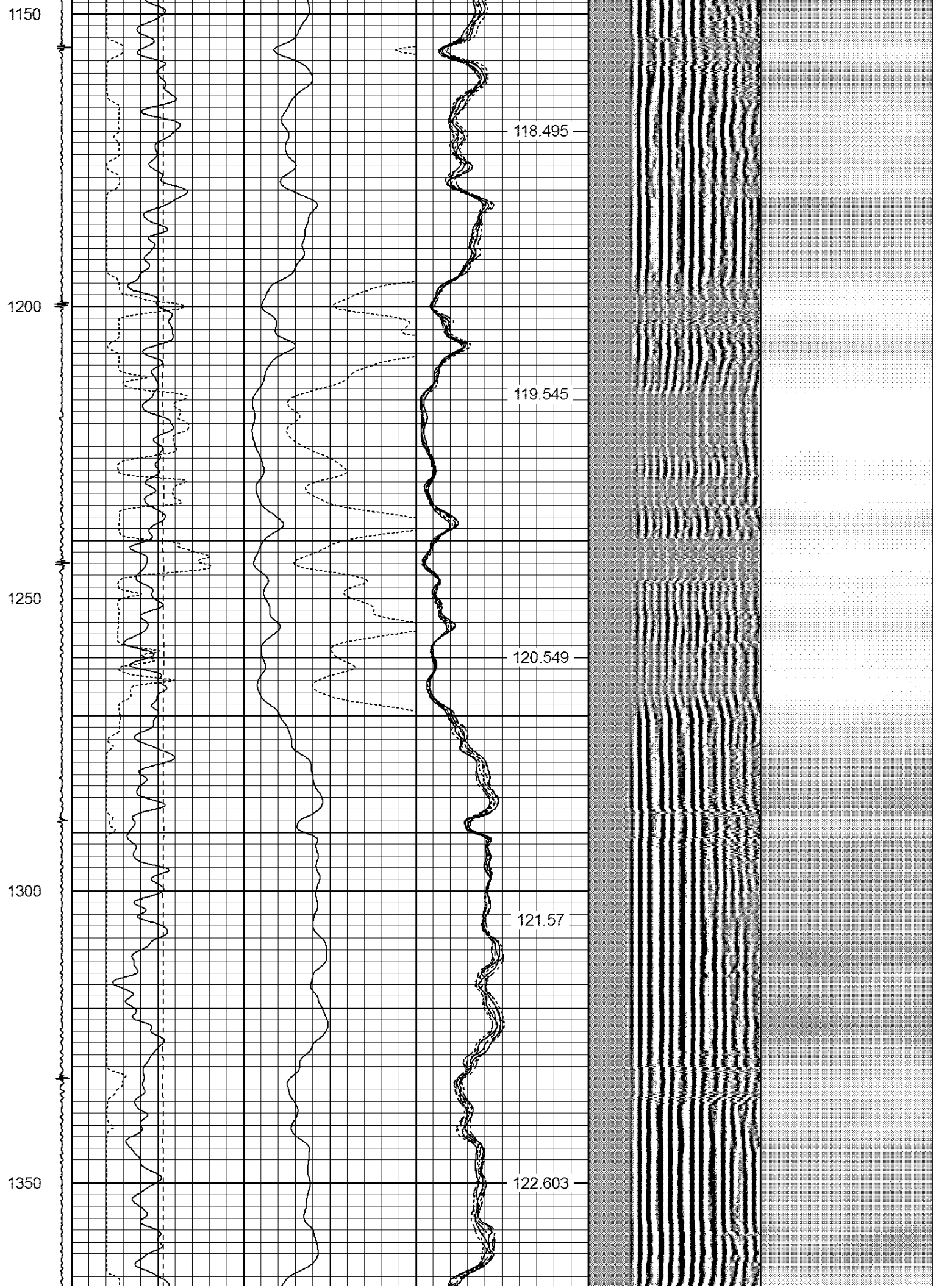
114.686

115.728

116.633

117.65





1400

1450

1500

1550

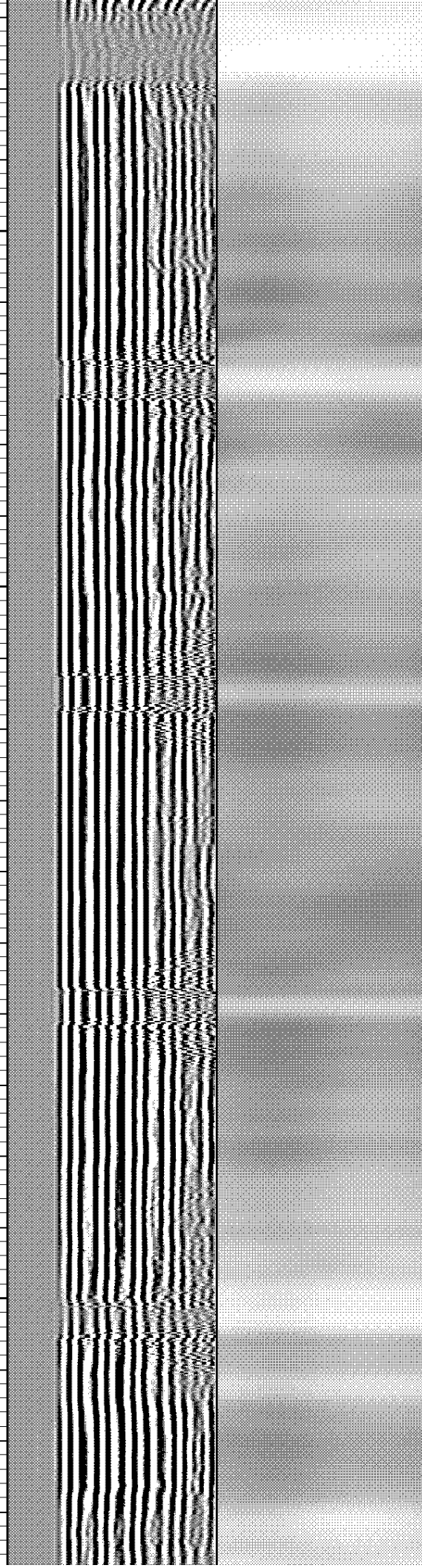
123.598

124.621

125.773

126.745

127.829



1600

1650

1700

1750

1800

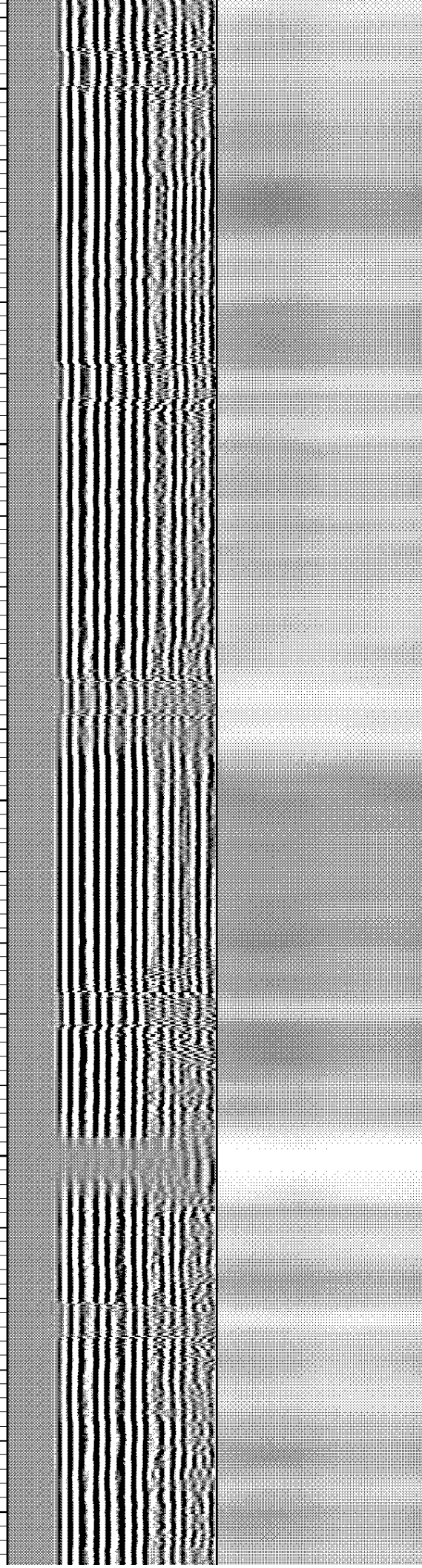
128.816

129.769

130.799

131.825

132.745



1850

1900

1950

2000

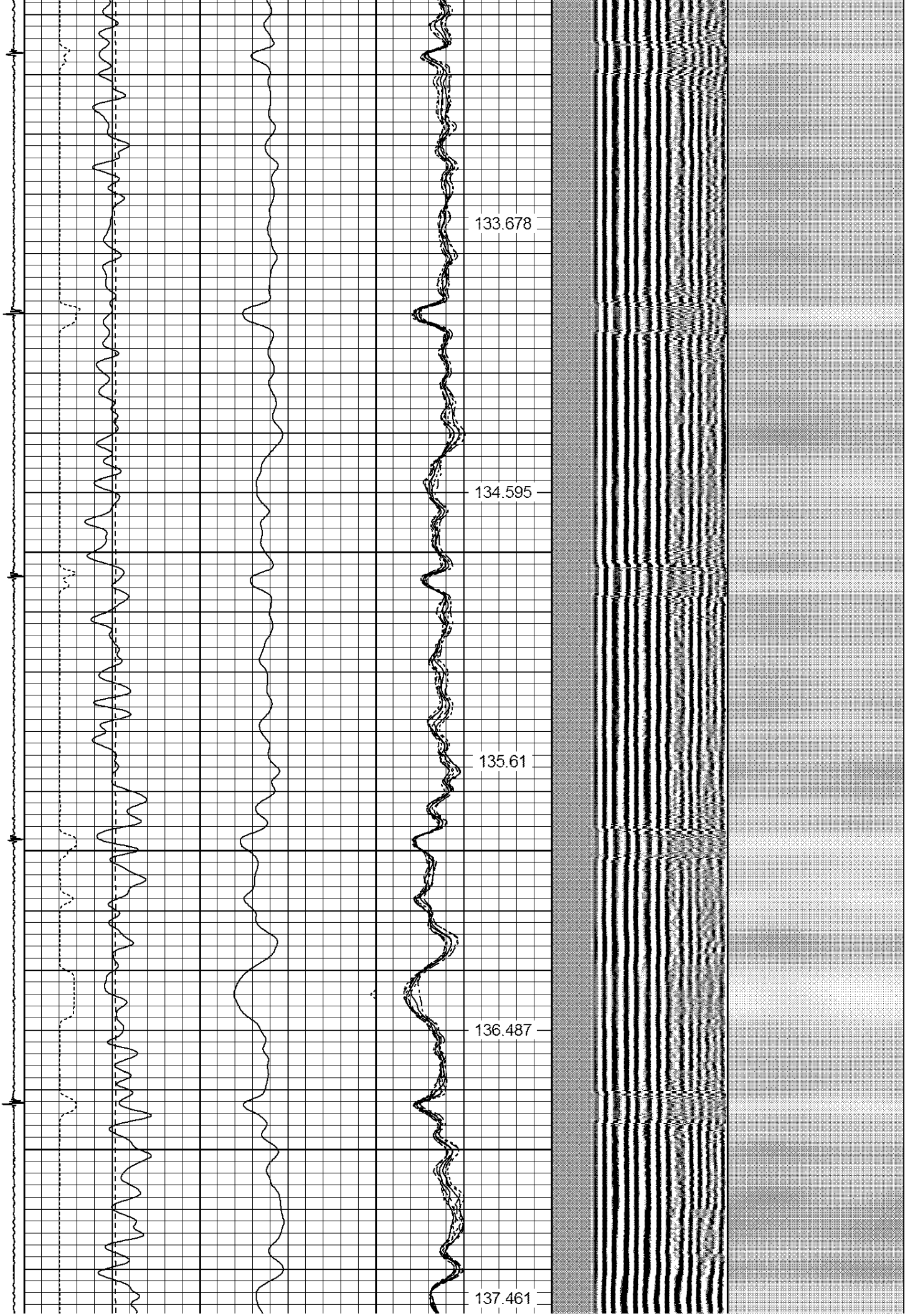
133.678

134.595

135.61

136.487

137.461



2050

2100

2150

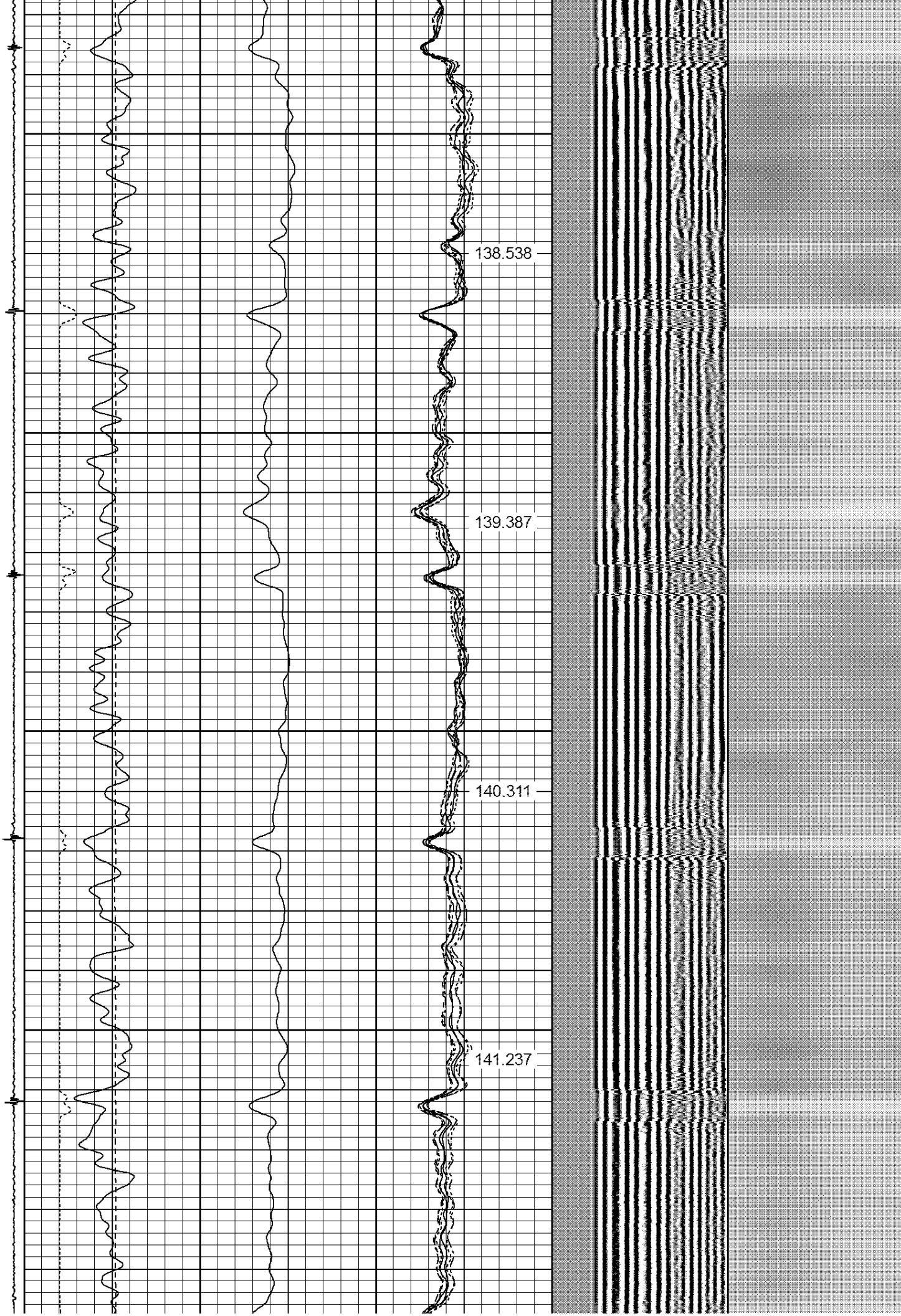
2200

138.538

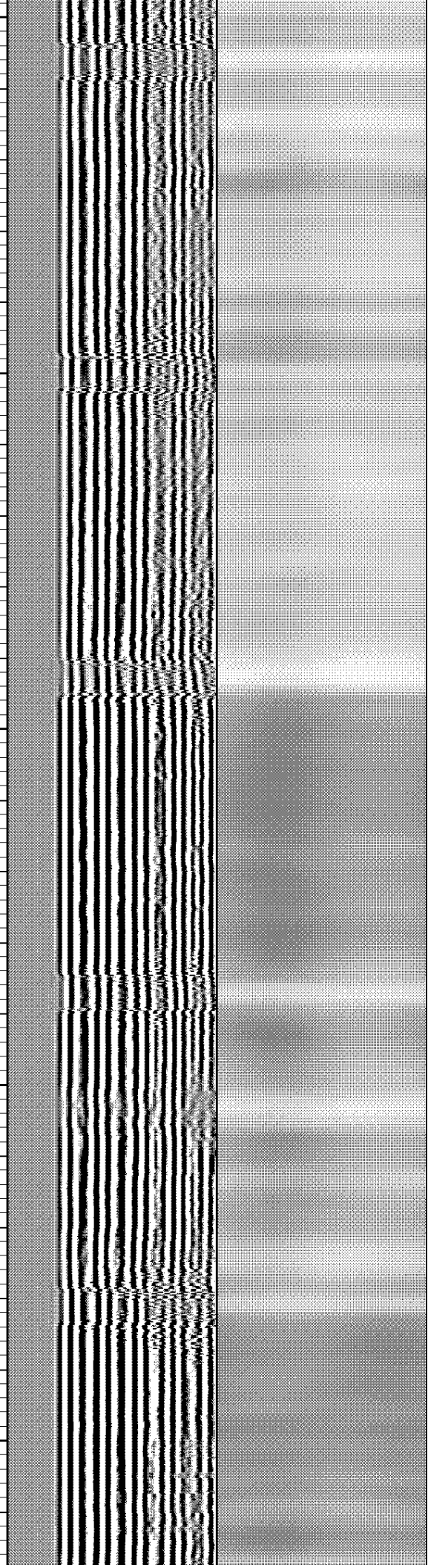
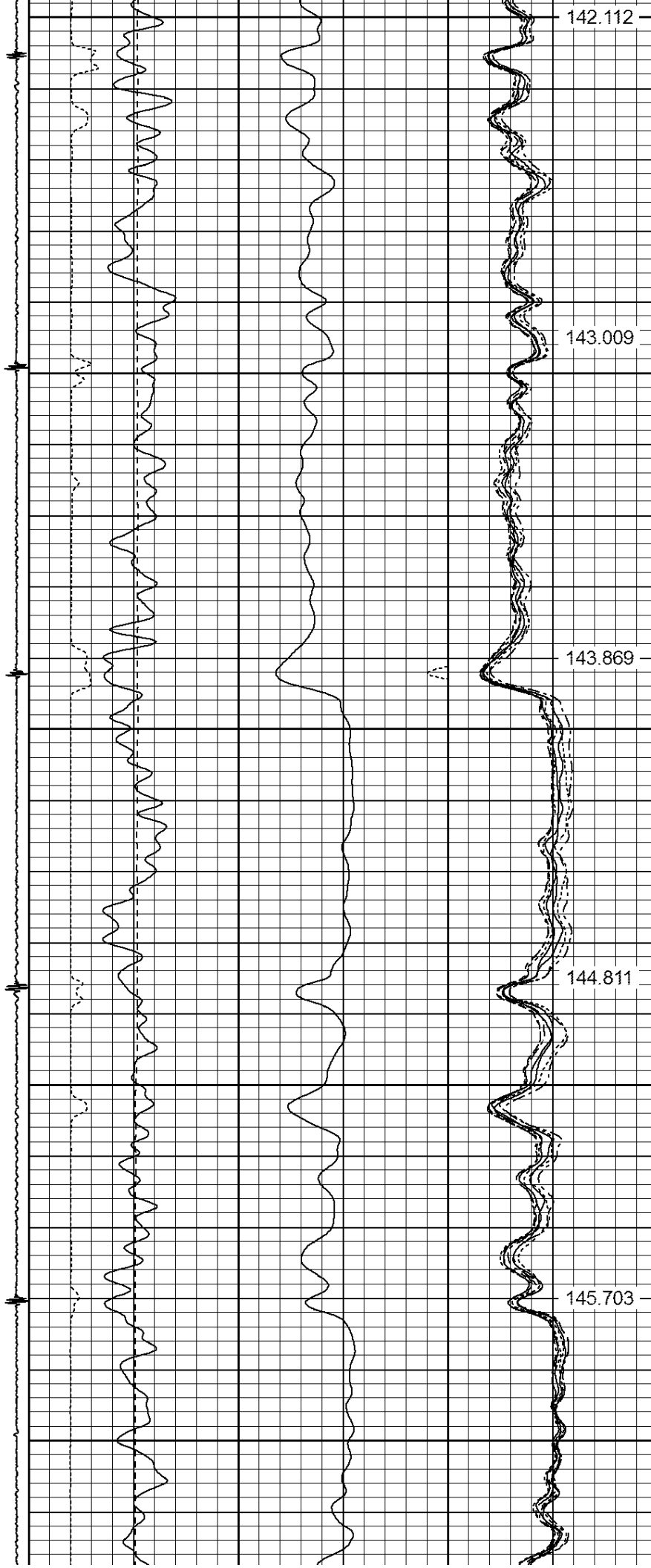
139.387

140.311

141.237



2250
2300
2350
2400
2450



2500

2550

2600

2650

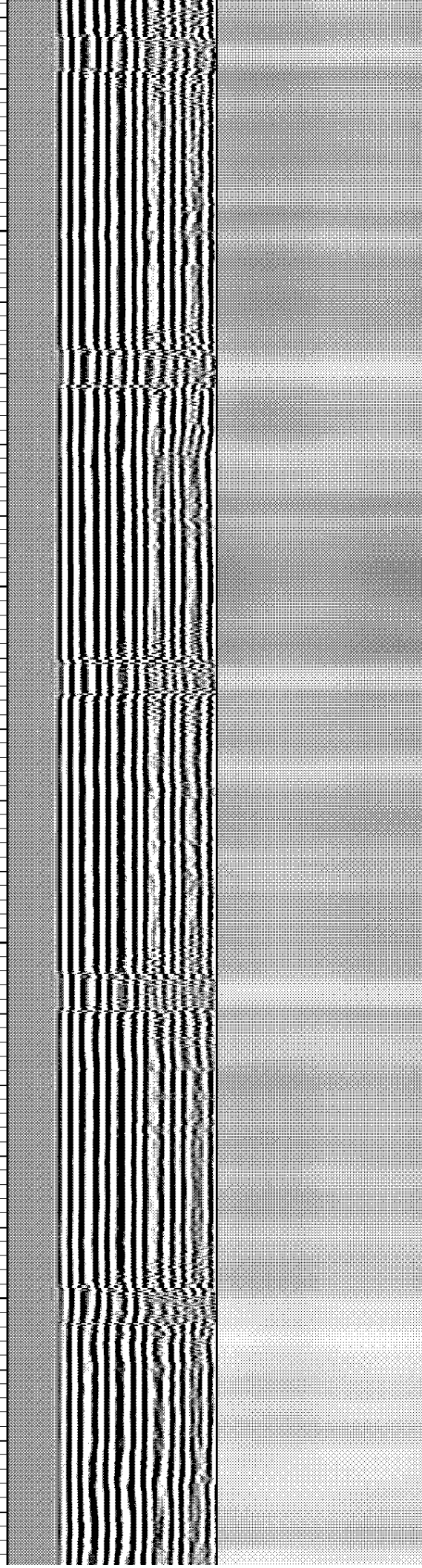
146.523

147.412

148.178

149.115

149.946



2700

150.84

2750

151.694

2800

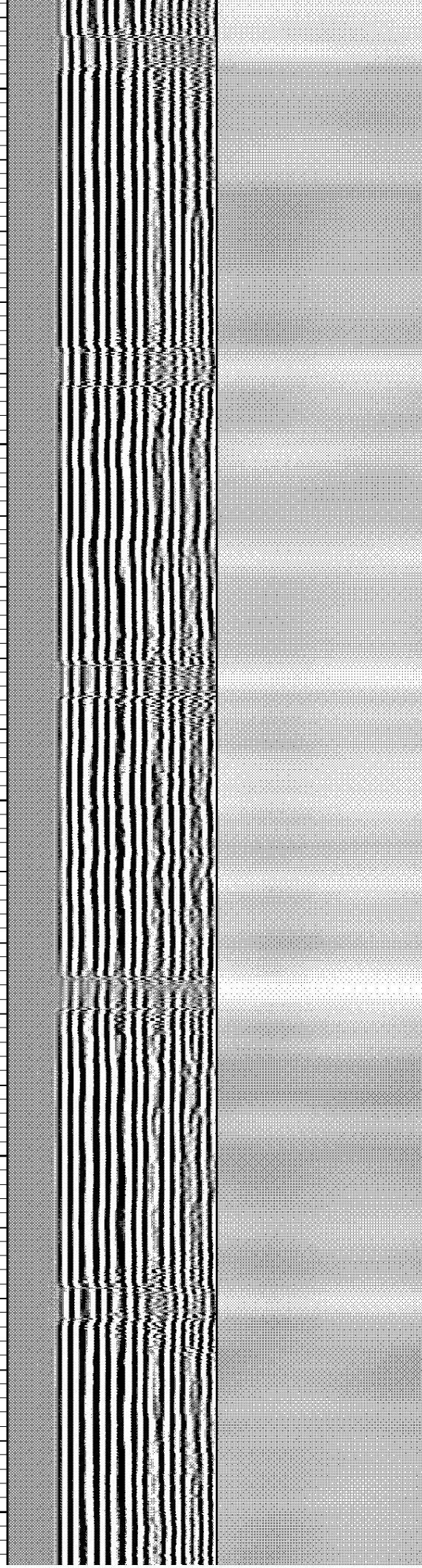
152.551

2850

153.369

2900

154.27



2950

3000

3050

3100

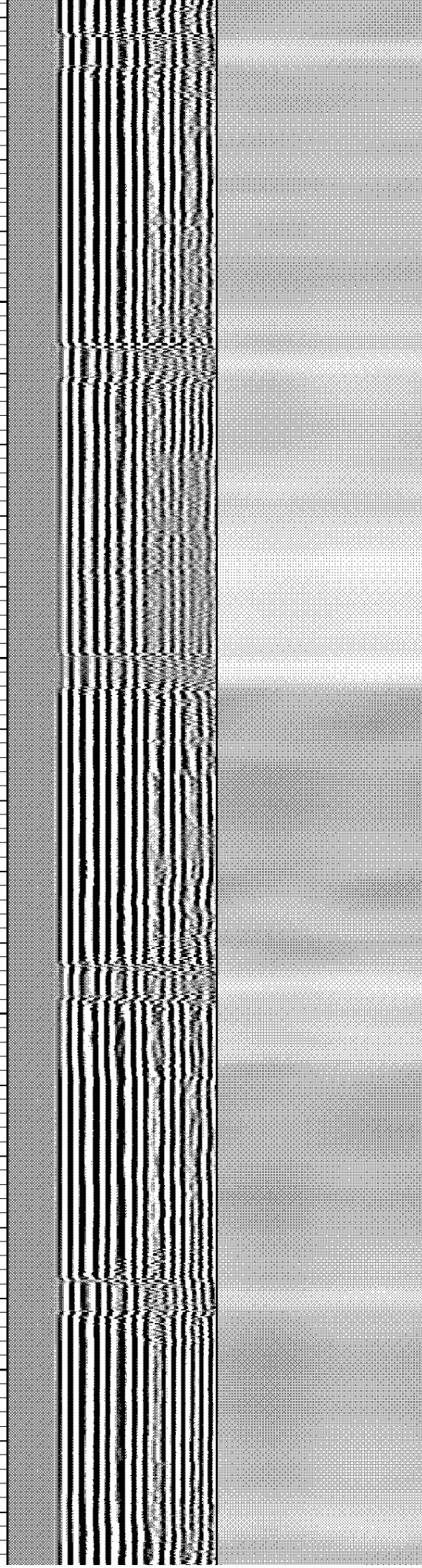
155.168

155.887

156.723

157.561

158.391



3150

159.173

3200

159.951

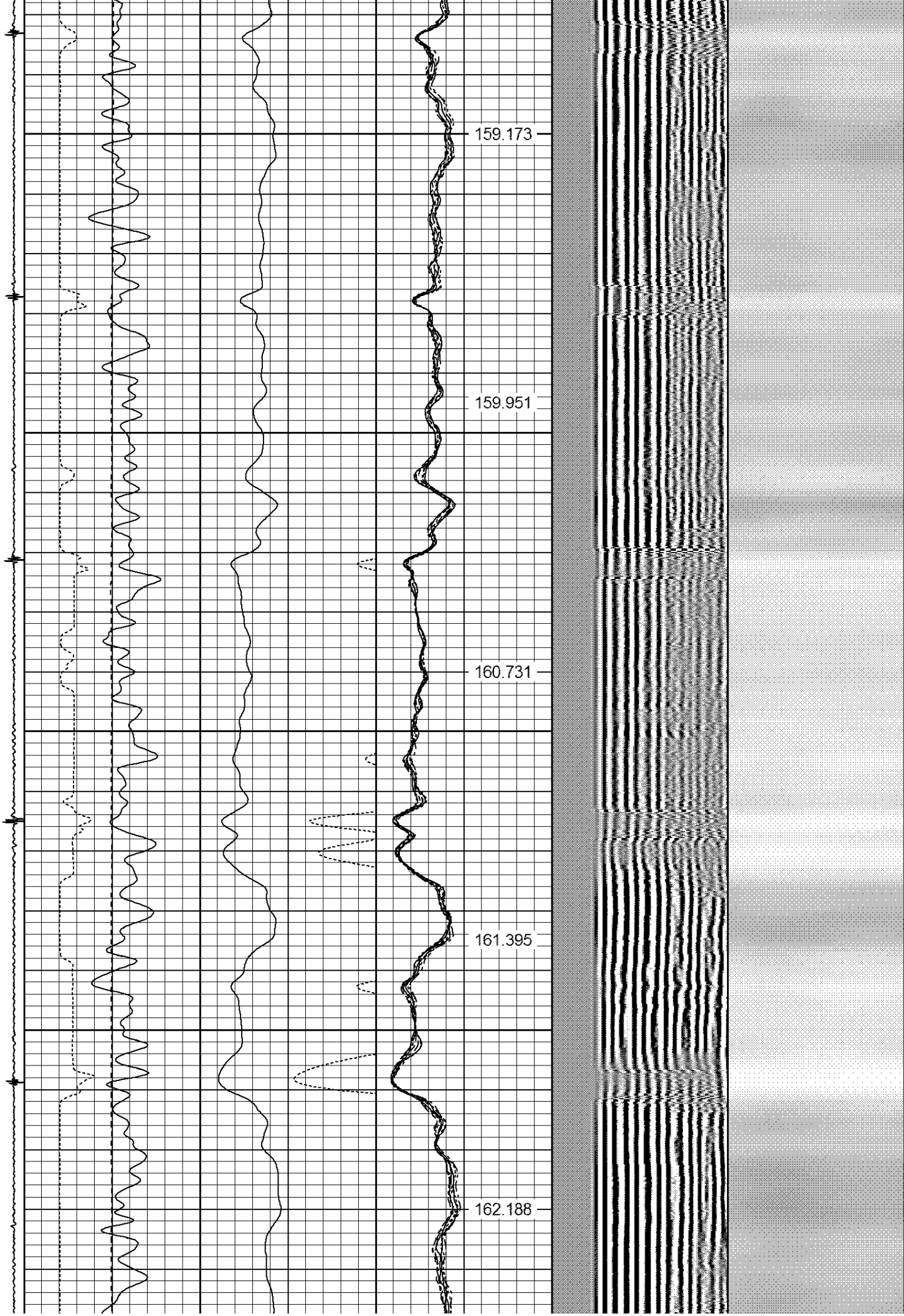
3250

160.731

3300

161.395

162.188



3350

3400

3450

3500

3550

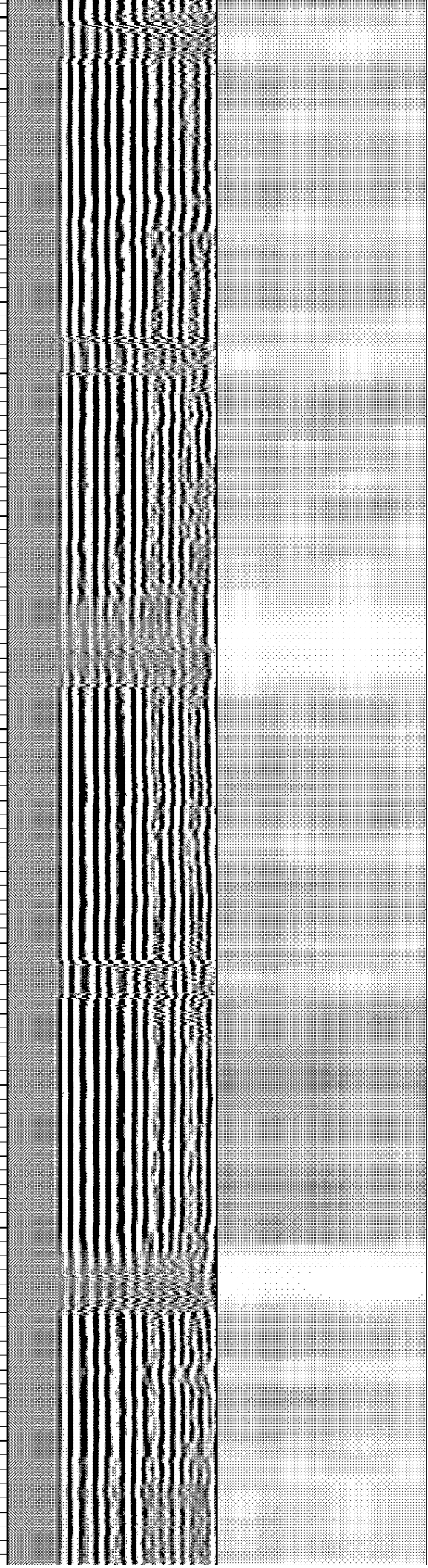
162.803

163.466

164.217

164.87

165.604



3600

166.189

3650

166.924

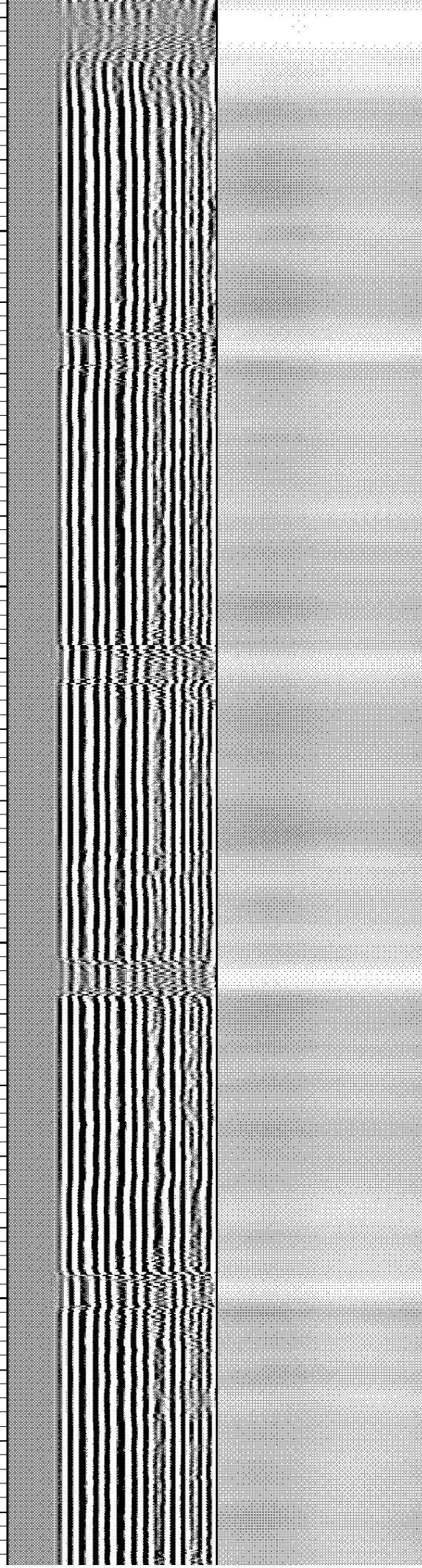
3700

167.626

3750

168.288

169.032



3800

3850

3900

3950

4000

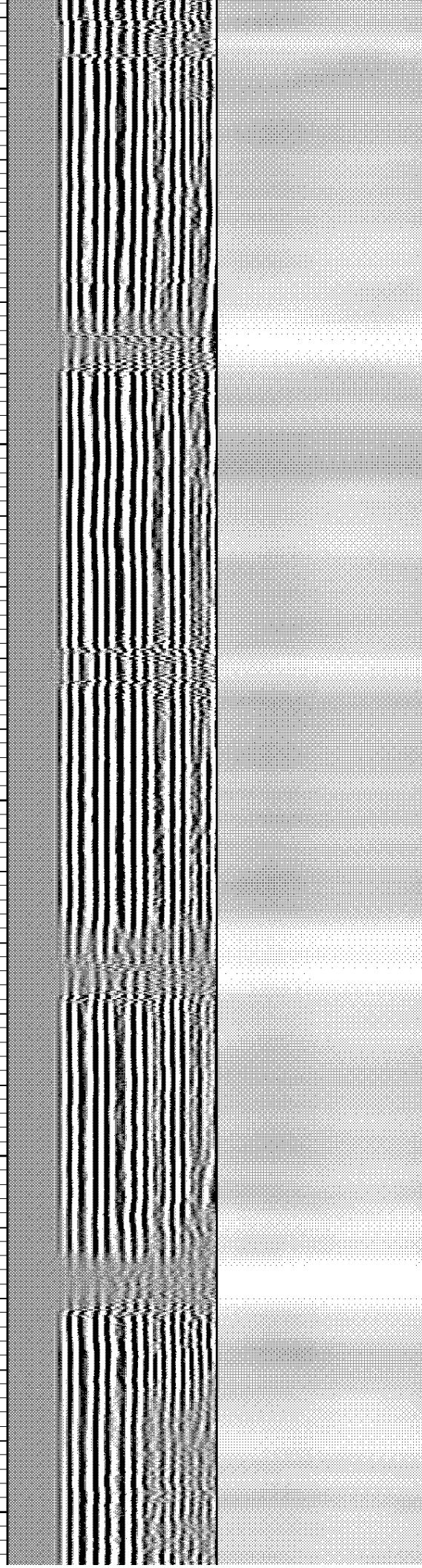
169.591

170.369

170.972

171.647

172.273



4050

172.873

4100

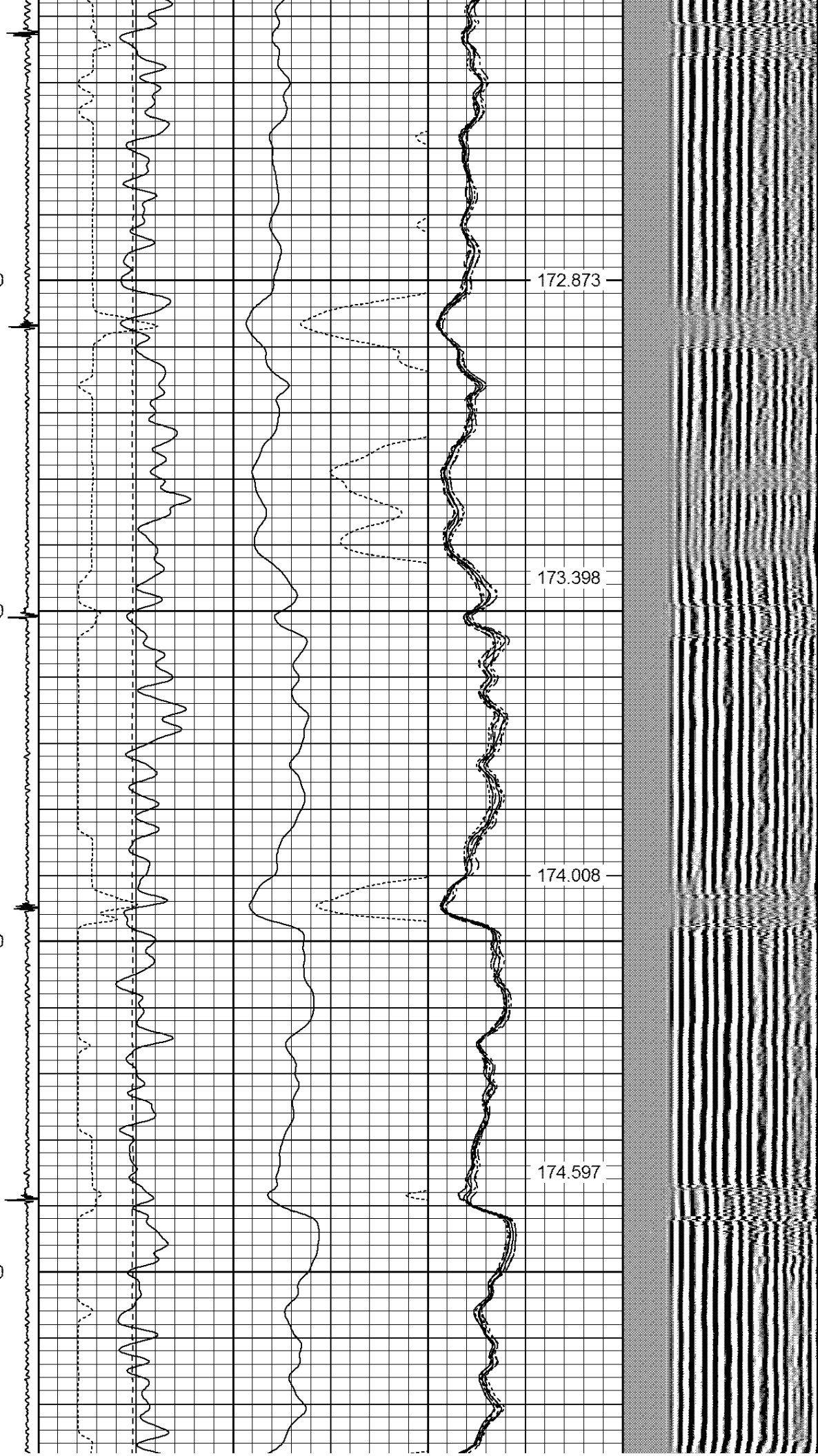
173.398

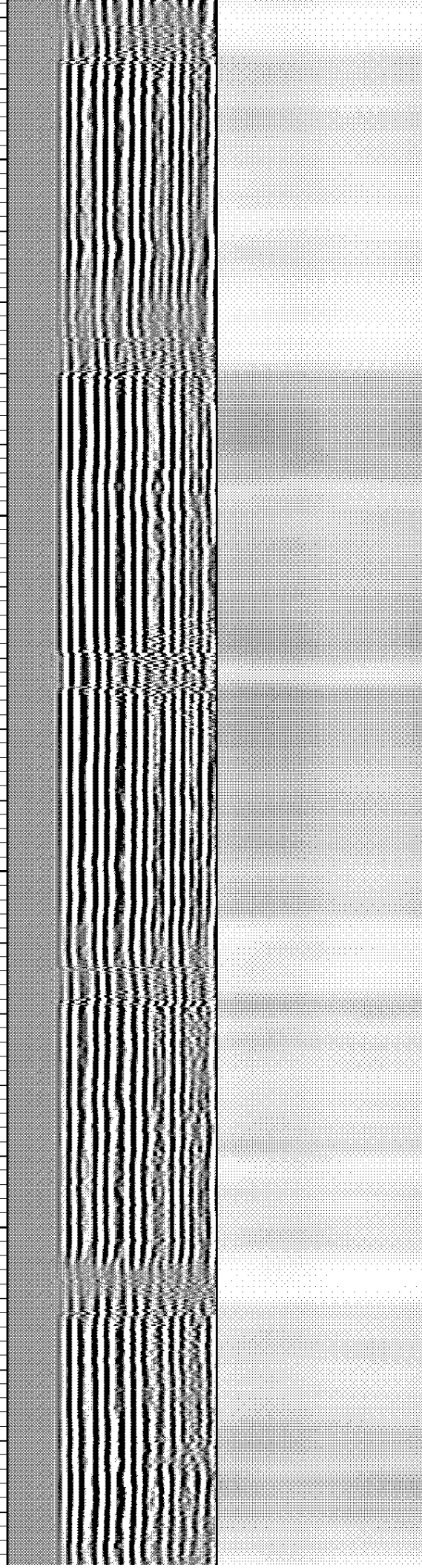
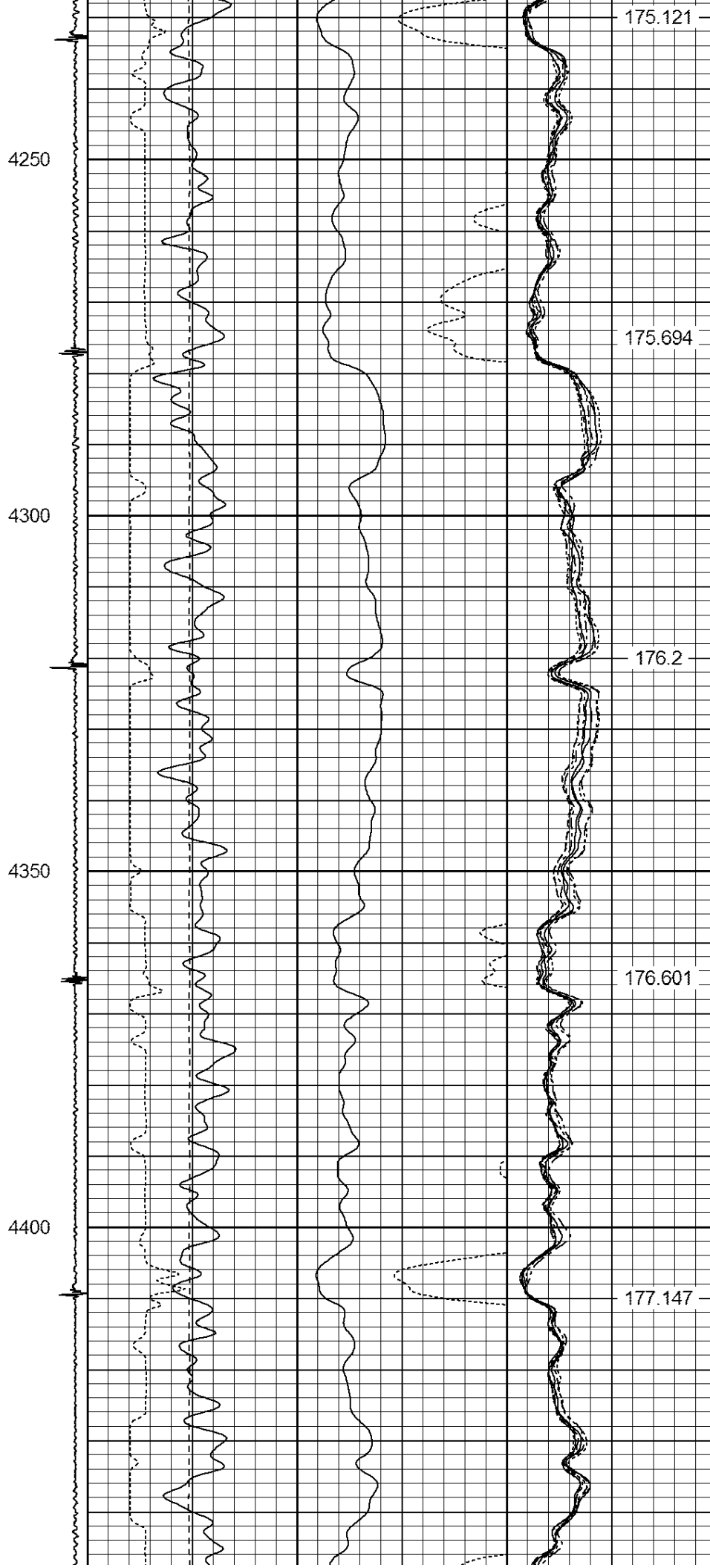
4150

174.008

4200

174.597





4450

4500

4550

4600

4650

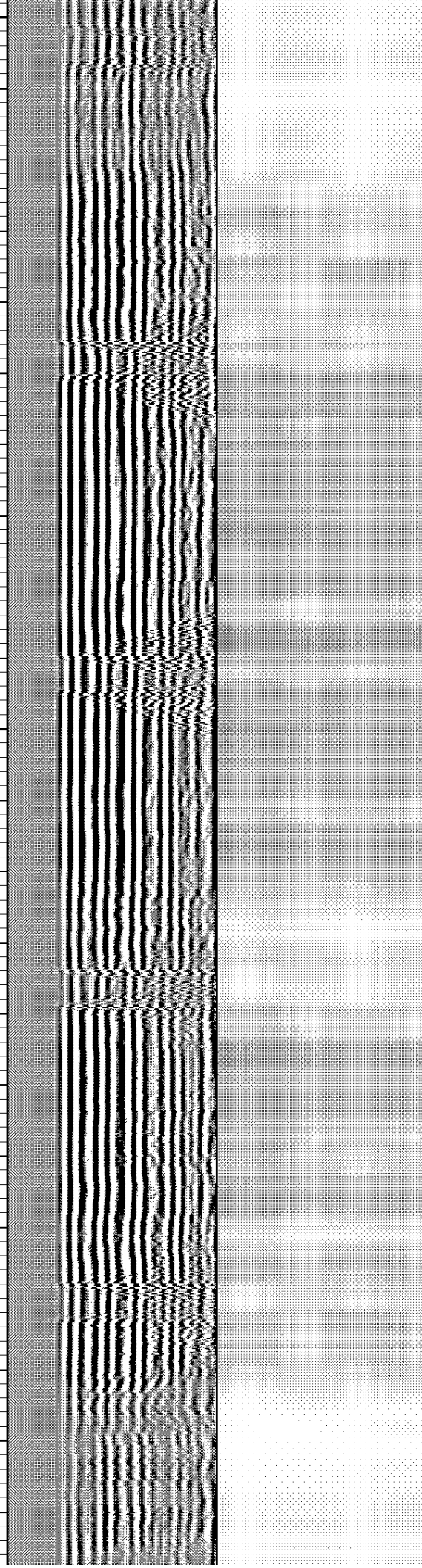
177.622

177.984

178.375

178.785

179.132



4700

4750

4800

4850

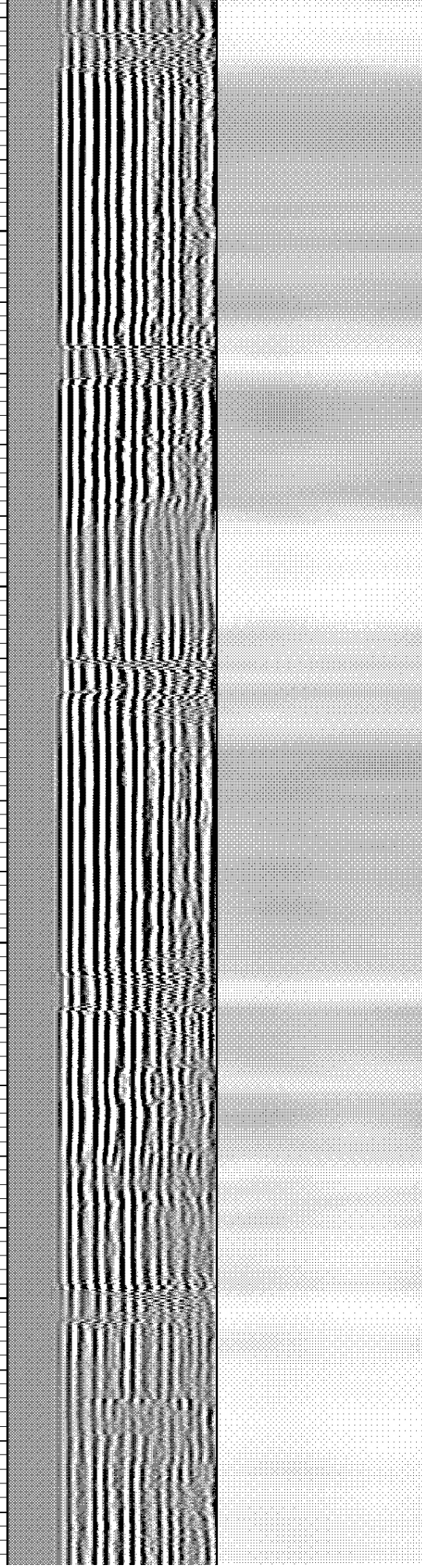
179.476

179.969

180.136

180.415

180.831



4900

181.122

4950

181.303

5000

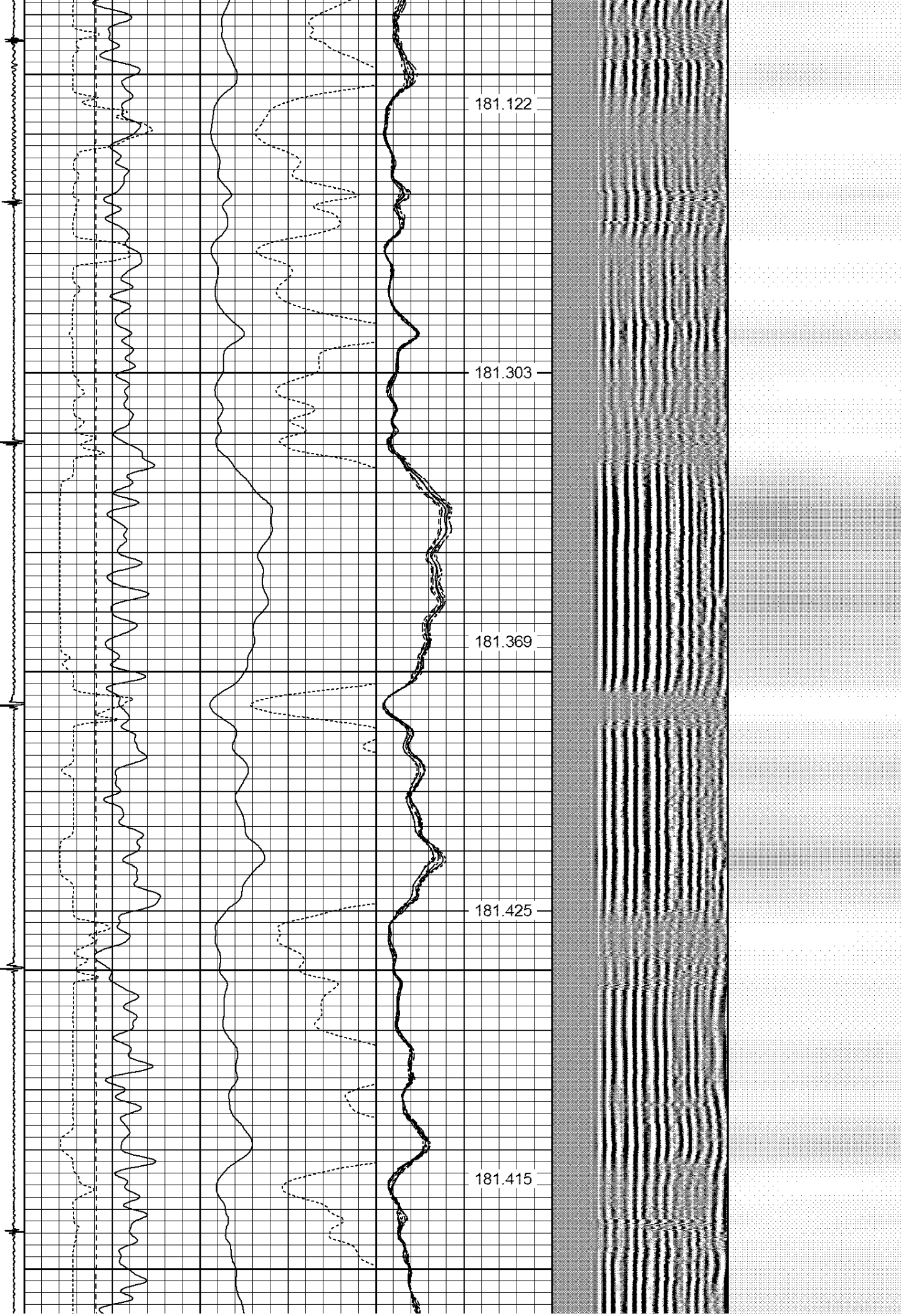
181.369

5050

181.425

5100

181.415



5150

5200

5250

5300

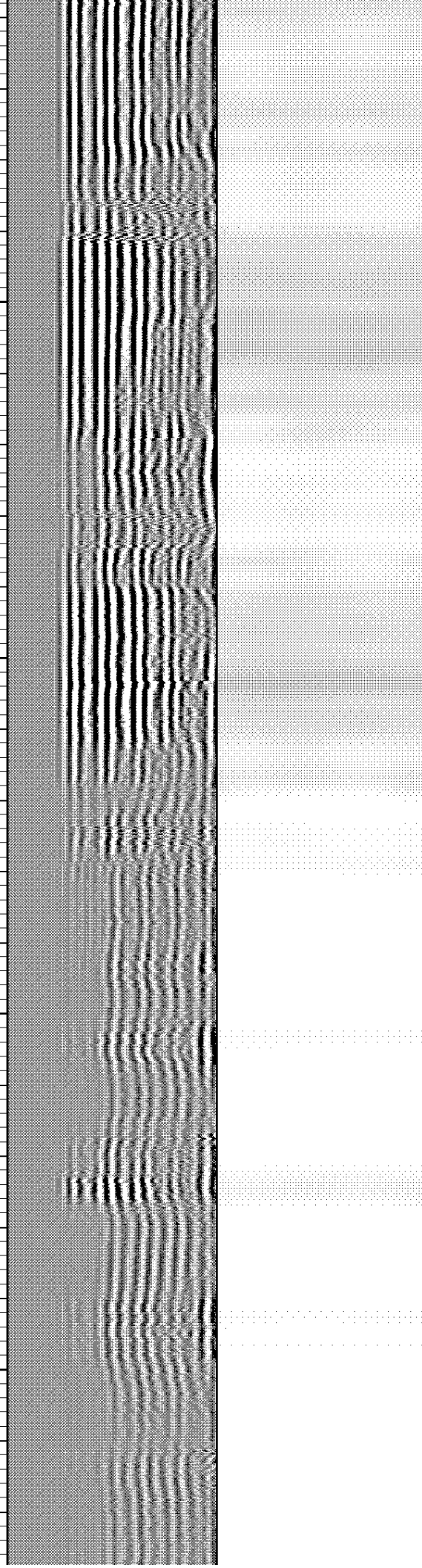
181.409

181.288

181.109

180.713

180.358



5350

179.768

5400

178.981

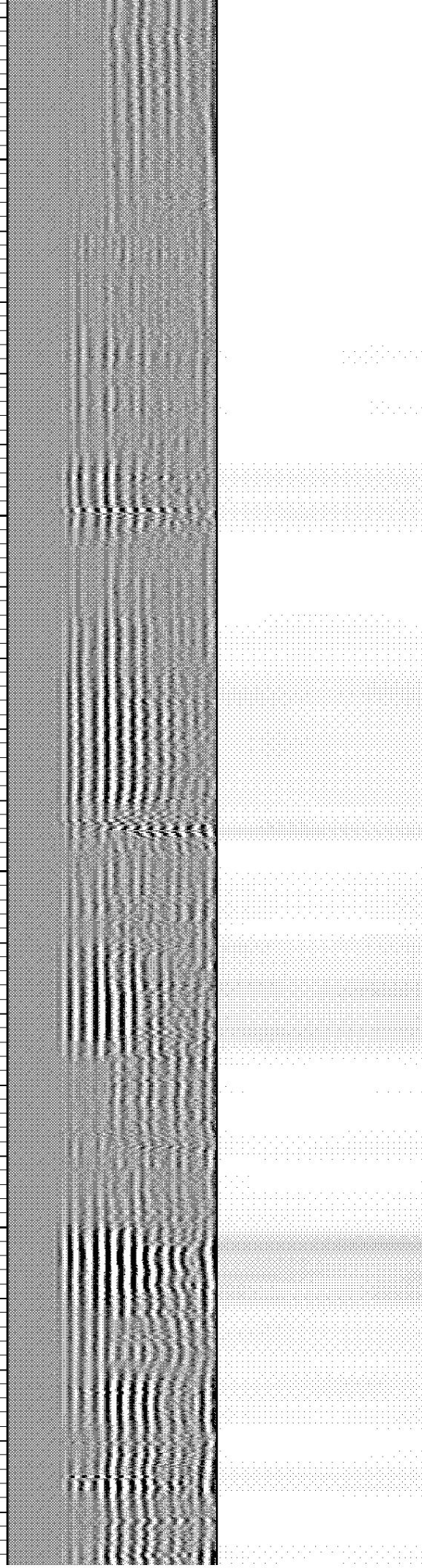
5450

177.909

5500

176.779

175.286



5550

5600

5650

5700

5750

173.567

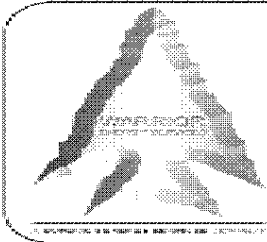
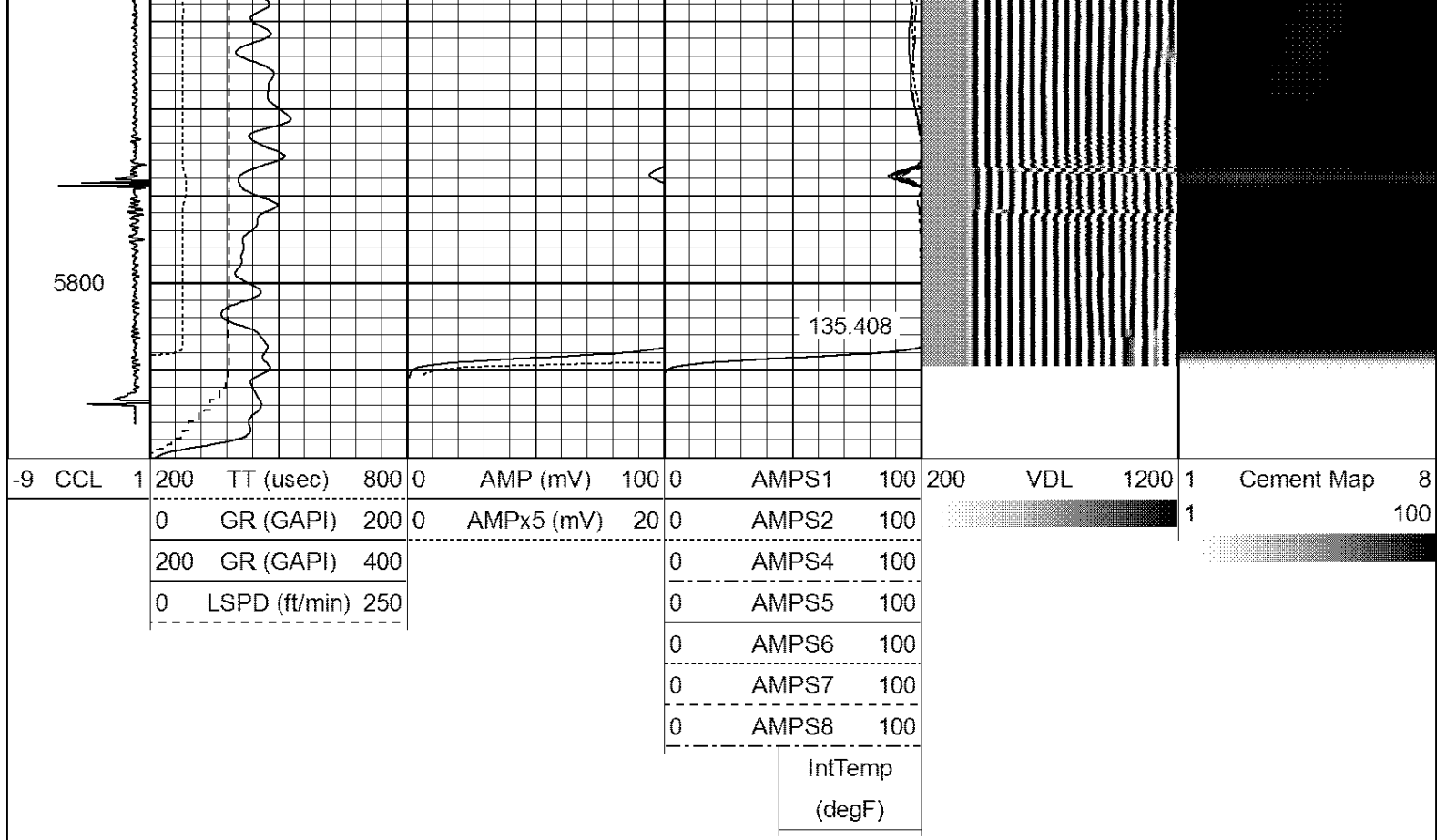
171.602

169.325

166.693

163.761





WARRIOR
ENERGY SERVICES

Company BILL BARRET CORPORATION
Well PAPPENHEIM 6-62-23-0461BH
Field BRIGGS DALE
County WELD
State COLORADO