

Radial Bond Log
Gamma-Ray
CCL

Company: BILL BARRET CORPORATION
Well: PAPPENHEIM 6-62-23-0560BH
Field: BRIGGSDALE
County: WELD
State: COLORADO

Location: SHL: 250' FNL & 1977' FWL NEN/NW
SEC 23 TWP 6N RGE 62W
API #: 05-123-37264
Other Services: Elevation 4699'
Permanent Datum: GL
Log Measured From: KB 16'
Drilling Measured From: KB

Date: 9-16-2013
Run Number: ONE
Depth Driller: 10747'
Bottom Logged Interval: 5976'
Top Log Interval: 700'
Open Hole Size: 8.375
Type Fluid: WATER
Density / Viscosity: 1.0
Max. Recorded Temp.: 195
Estimated Cement Top:
Time Well Ready:
Time Logger on Bottom:
Equipment Number: 5432
Location: GREELEY
Recorded By: M. JANDREAU
Witnessed By: M. BEAUXIS

Borehole Record		Tubing Record					
Run Number	Bit	From	To	Size	Weight	From	To
ONE	0	845'	9 5/8"	36	0	835'	835'
TWO	845'	6787'	7"	26	0	6760'	6760'
THREE	6787'	10747'	4 1/2"	11.6	5813'	10742'	10742'
FOUR							

Casing Record: Surface String 9 5/8" 36 Wgt/Ft 0 Top 841 Bottom
Prot. String
Production String 7 26 0 6760'
Liner 4 1/2" 11.6 5813' 10742'

>>> Fold Here >>>

All interpretations are opinions based on inferences from electrical or other measurements and we cannot and do not guarantee the accuracy or correctness of any interpretation, and we shall not, except in the case of gross or willful negligence on our part, be liable or responsible for any loss, costs, damages, or expenses incurred or sustained by anyone resulting from any interpretation made by any of our officers, agents or employees. These interpretations are also subject to our general terms and conditions set out in our current Price Schedule.

Comments

Correlated to Liner Hanger @ 5819'

THANK YOU FOR USING WARRIOR.

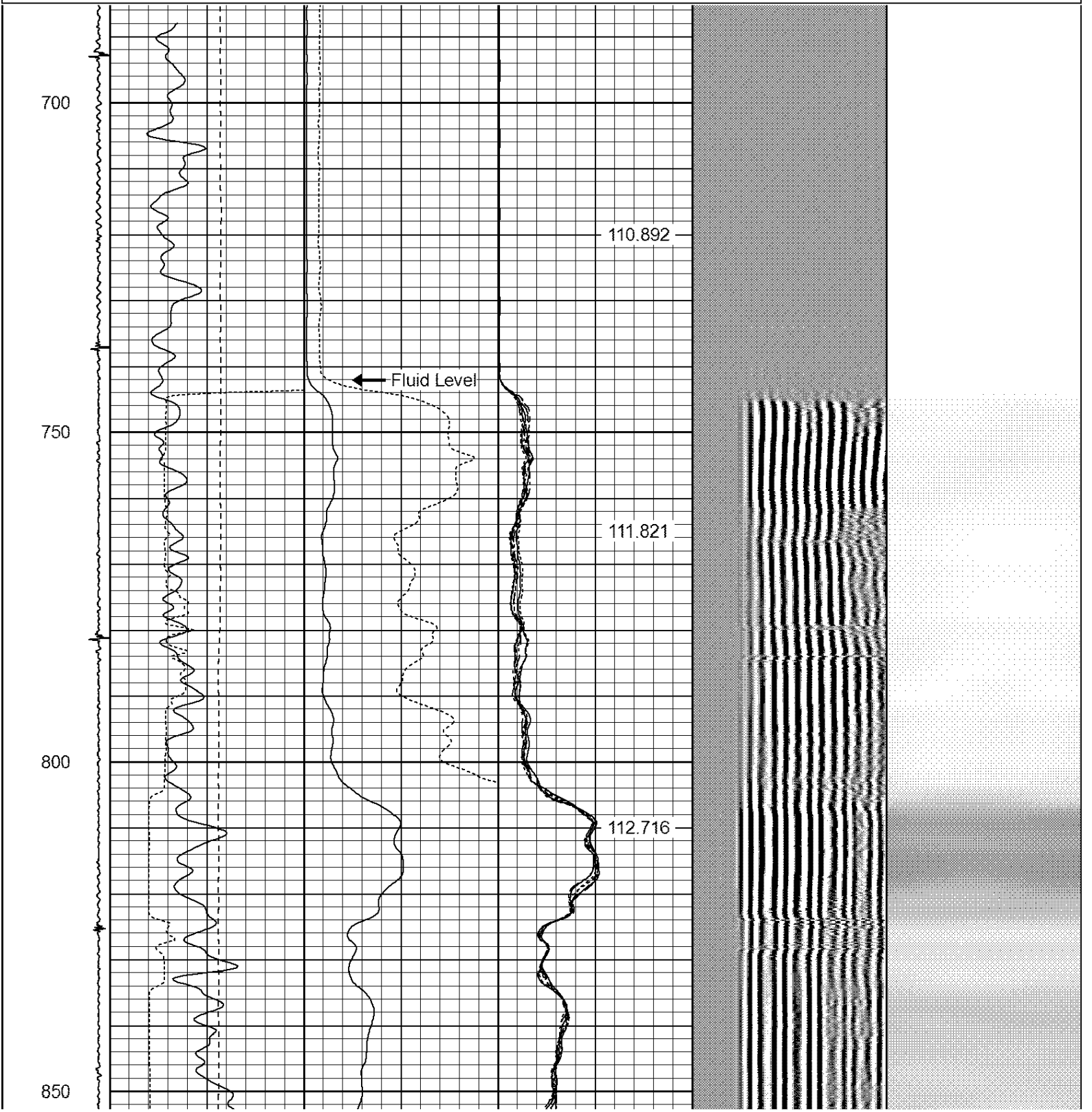
Sensor	Offset (ft)	Schematic	Description	Len (ft)	OD (in)	Wt (lb)

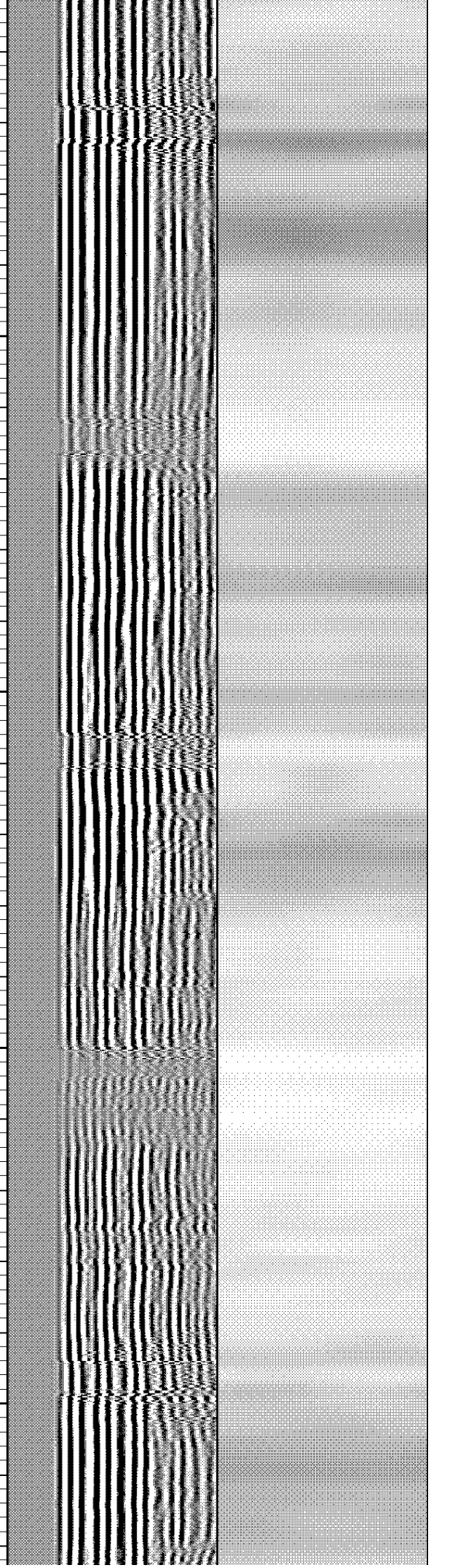
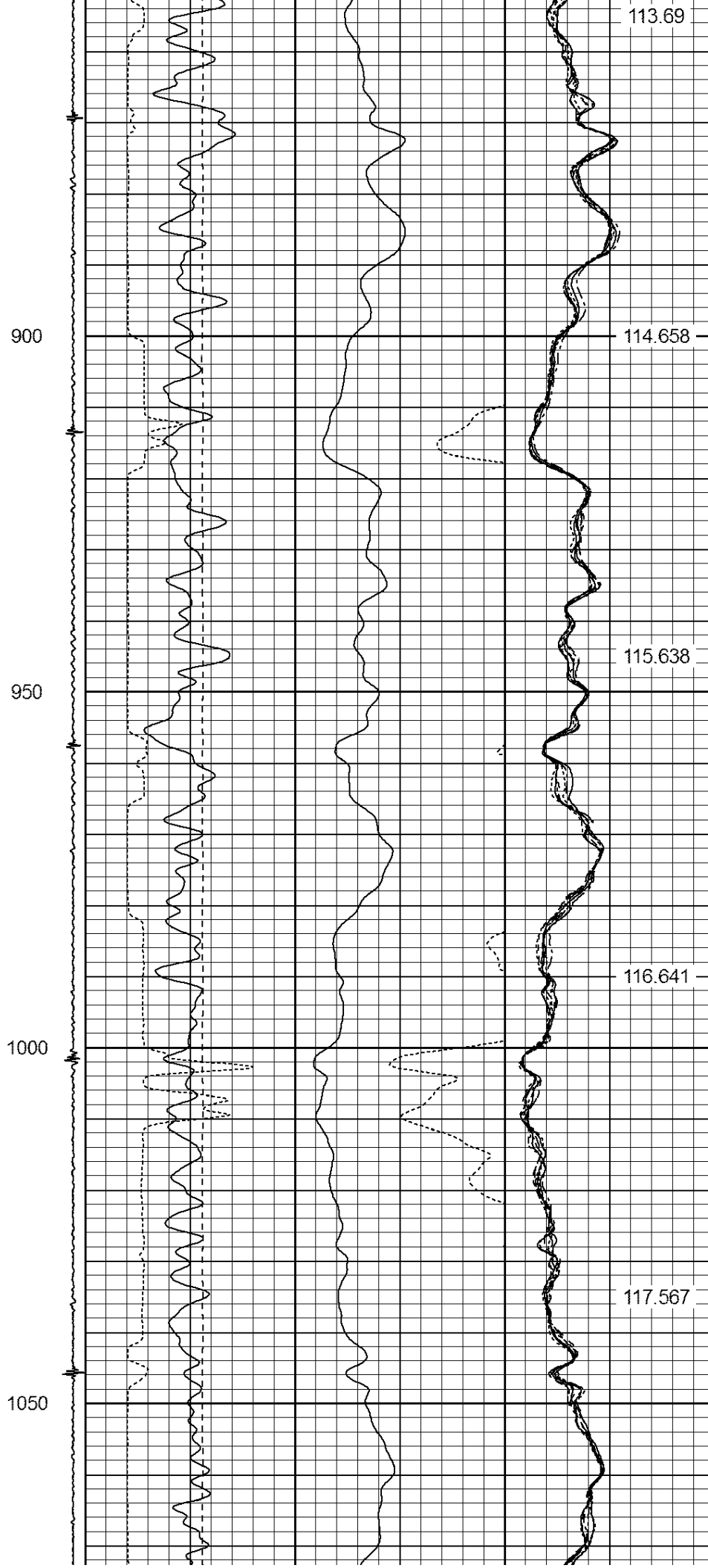
			PTS275	2.83	2.75	
HEADVOLT	16.25					
IntTemp	14.83					
WVF3FT	11.58		RBT-Probe (Base)	8.92	2.75	90.00
WVFCAL	11.58		Probe Radii Bond Tool with Digital Telemetry			
WVFS1	11.58					
WVFS2	11.58					
WVFS3	11.58					
WVFS4	11.58					
WVFS5	11.58					
WVFS6	11.58					
WVFS7	11.58					
WVFS8	11.58					
WVF5FT	10.58					
CNLSC	6.00		CNT-Probe_B (275)	3.00	2.75	40.00
CNSSC	5.17		6 bow centralizer			
CCL	3.64					
GR	0.90		GR-Probe (275)	4.33	2.75	30.00
			Probe 2.75"			

Dataset: pappenheim 06-62-23-0560bh.db: field/well/run1/pass2
 Total Length: 19.08 ft
 Total Weight: 160.00 lb
 O.D.: 2.75 in

Database File: pappenheim 06-62-23-0560bh.db
 Dataset Pathname: pass2
 Presentation Format: ips_rbt

-9	CCL	1	200	TT (usec)	800	0	AMP (mV)	100	0	AMPS1	100	200	VDL	1200	1	Cement Map	8
			0	GR (GAPI)	200	0	AMPx5 (mV)	20	0	AMPS2	100				1		100
			200	GR (GAPI)	400				0	AMPS4	100						
			0	LSPD (ft/min)	250				0	AMPS5	100						
									0	AMPS6	100						
									0	AMPS7	100						
									0	AMPS8	100						
										IntTemp							
										(degF)							





1100

1150

1200

1250

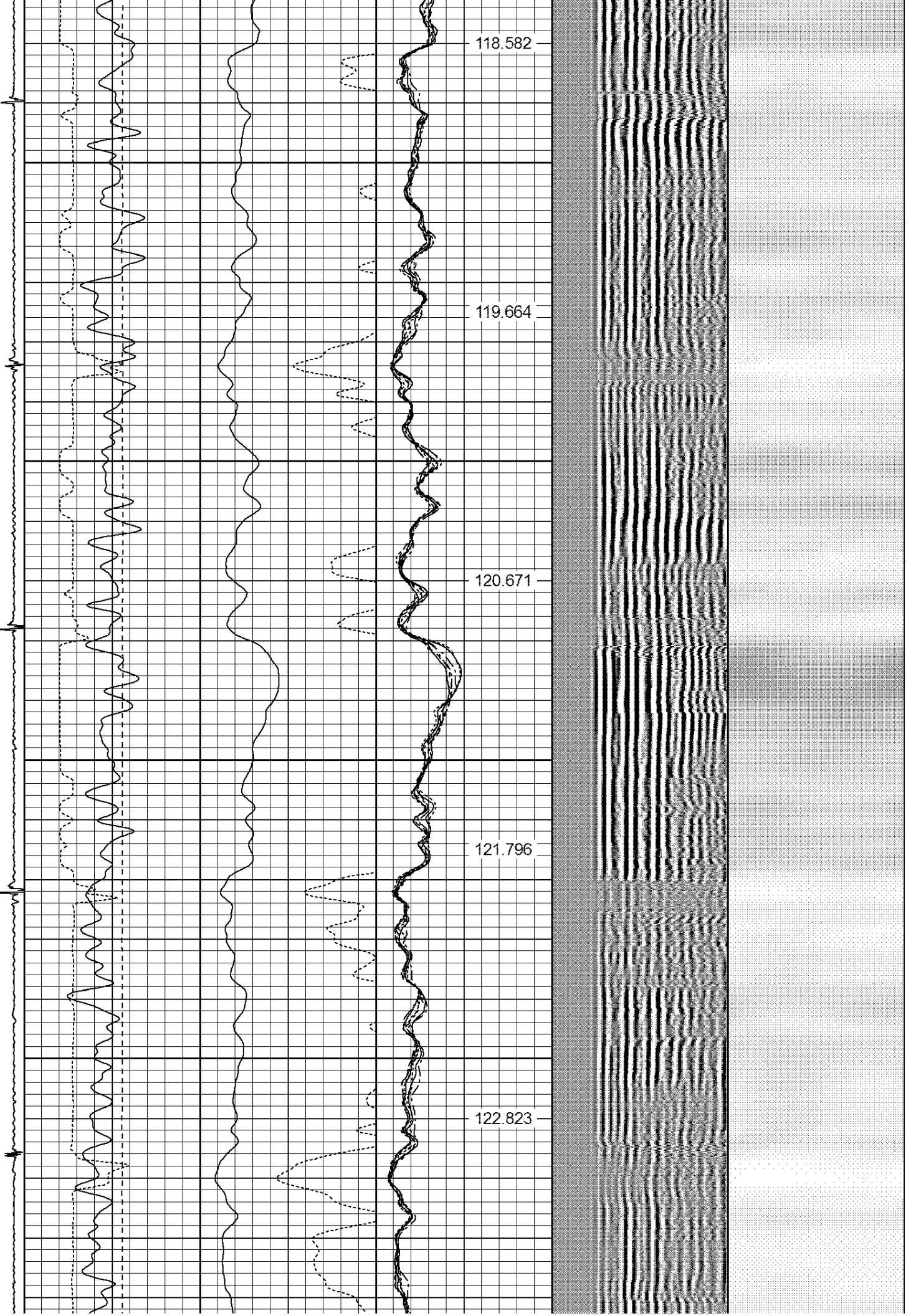
118.582

119.664

120.671

121.796

122.823



1300

1350

1400

1450

1500

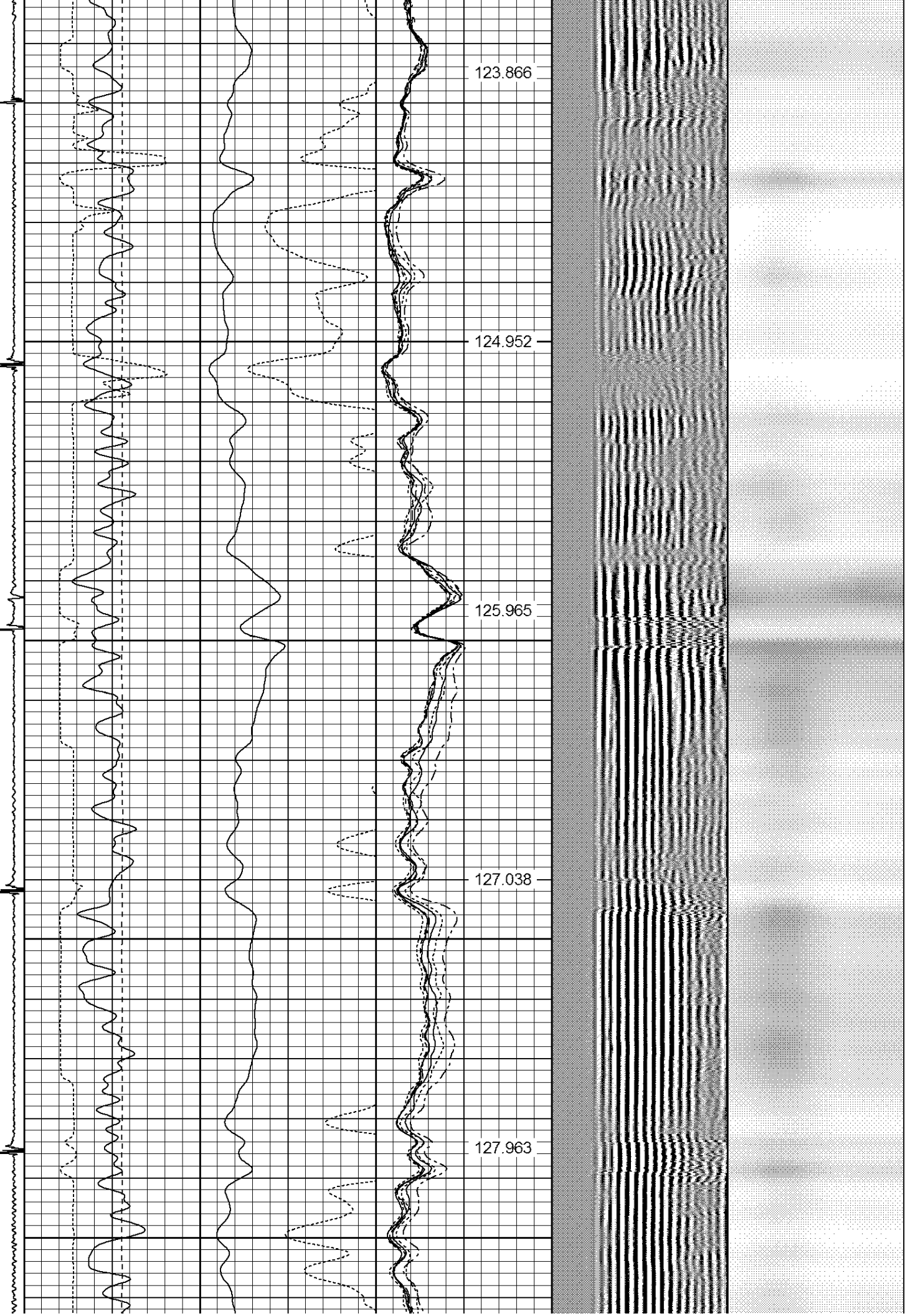
123.866

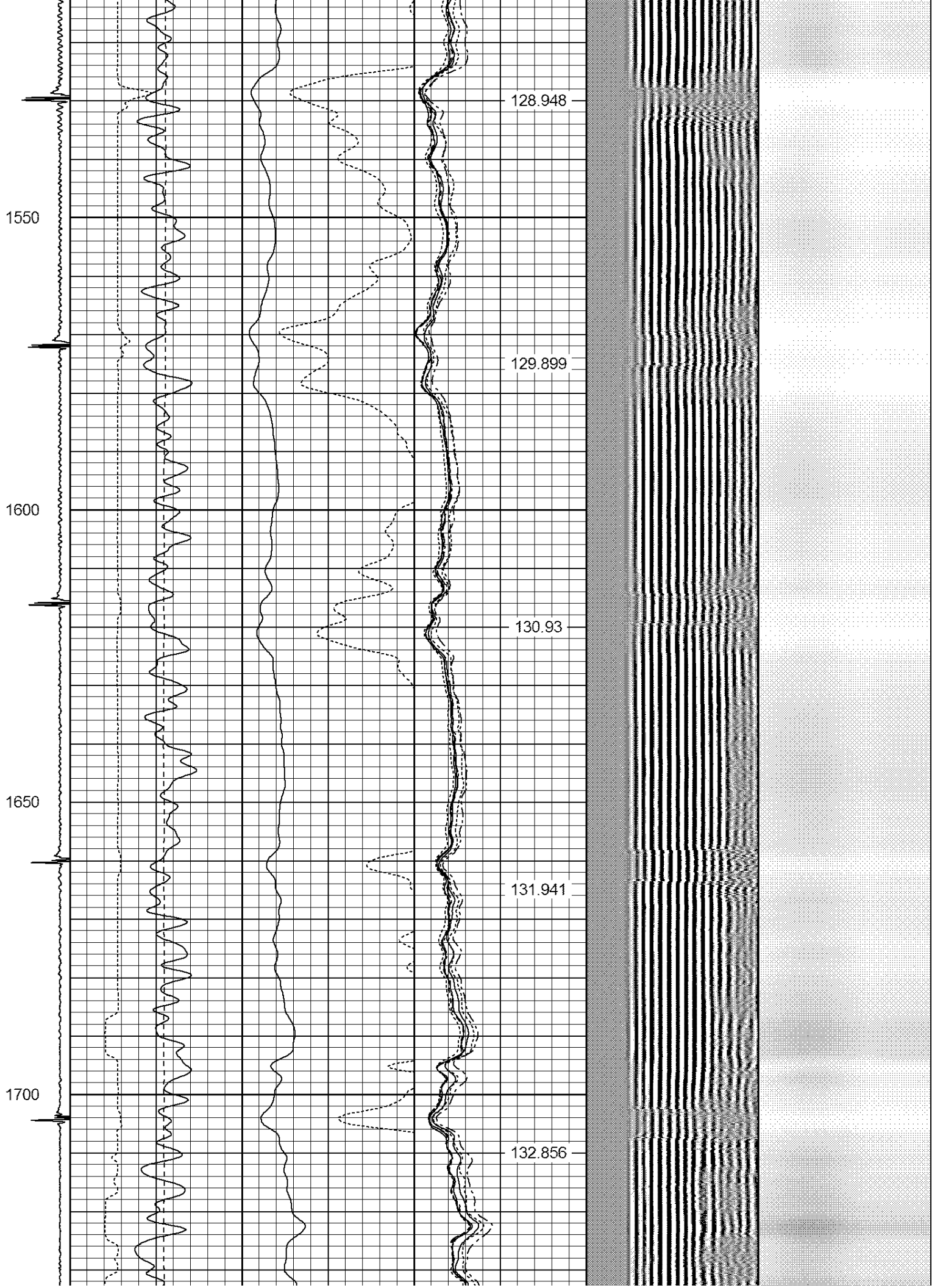
124.952

125.965

127.038

127.963





1750

1800

1850

1900

1950

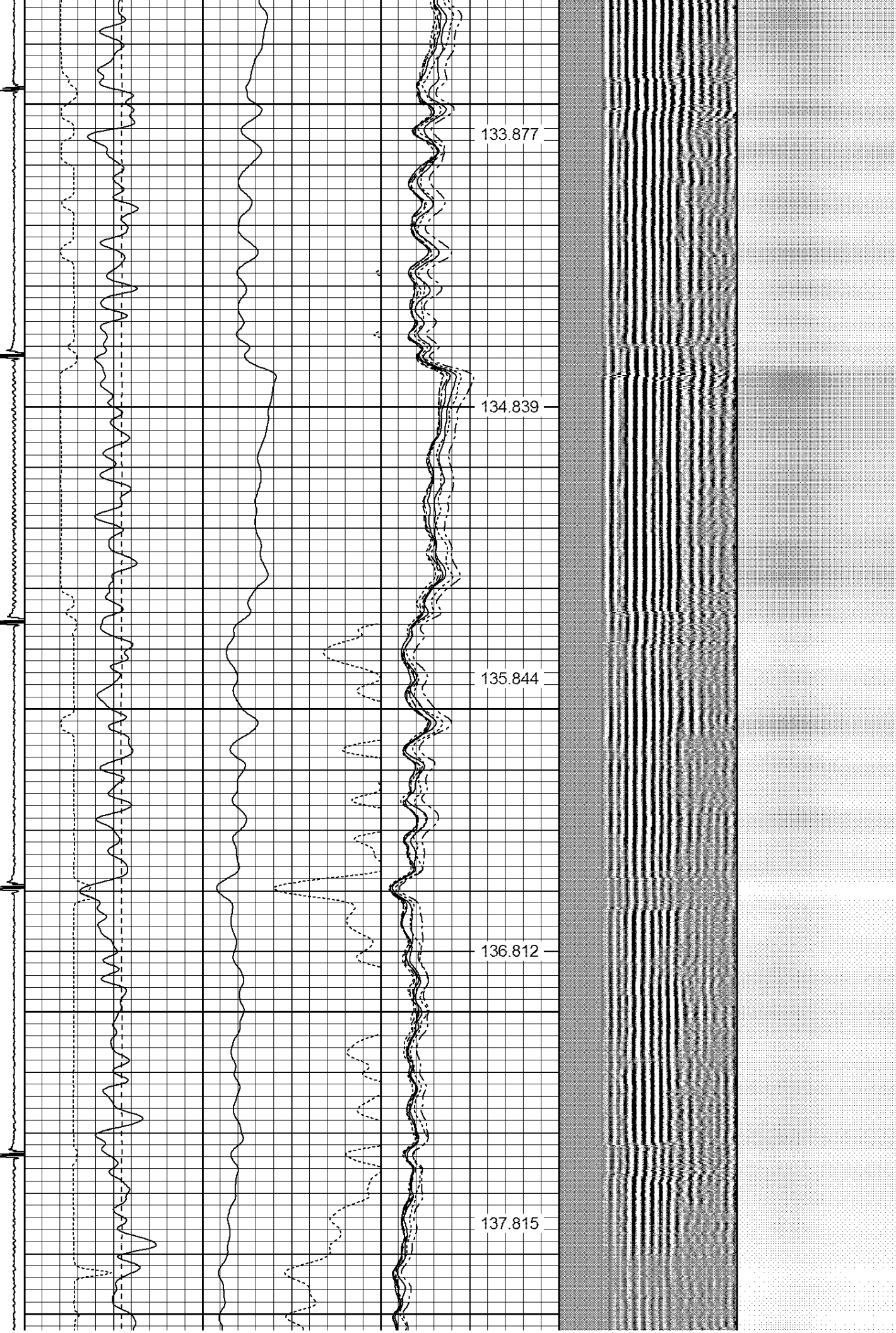
133.877

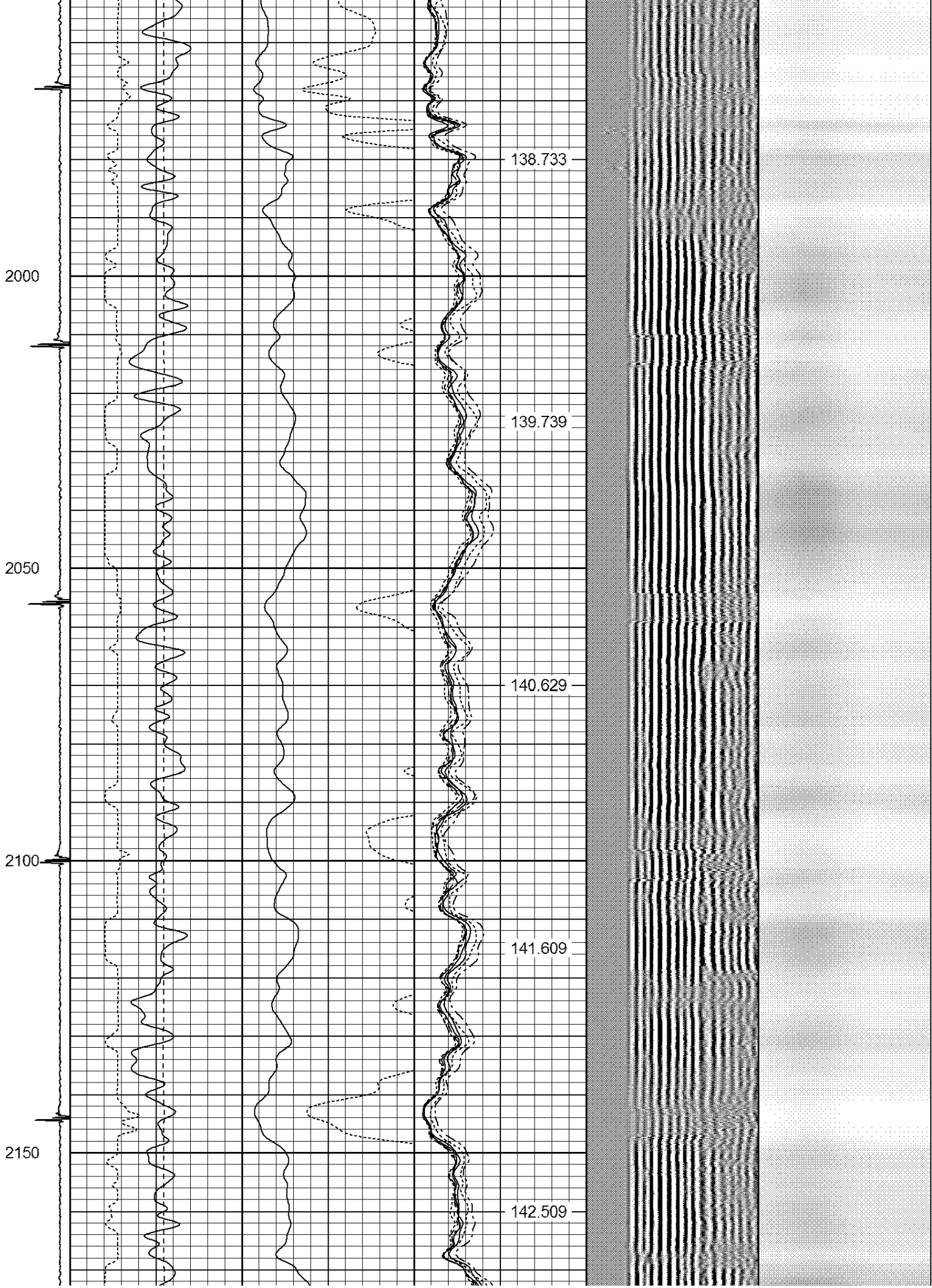
134.839

135.844

136.812

137.815





2200

2250

2300

2350

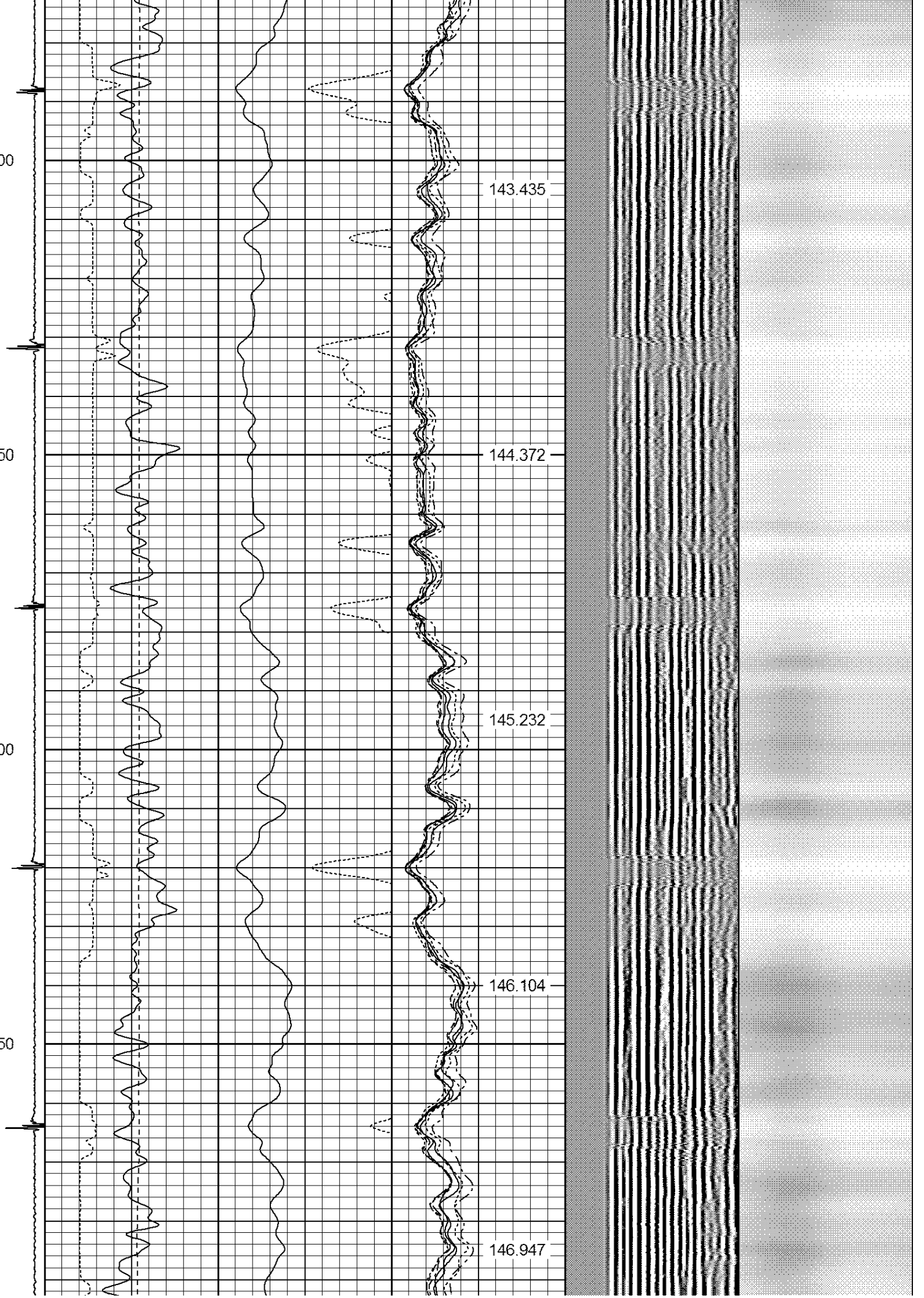
143.435

144.372

145.232

146.104

146.947



2400

2450

2500

2550

2600

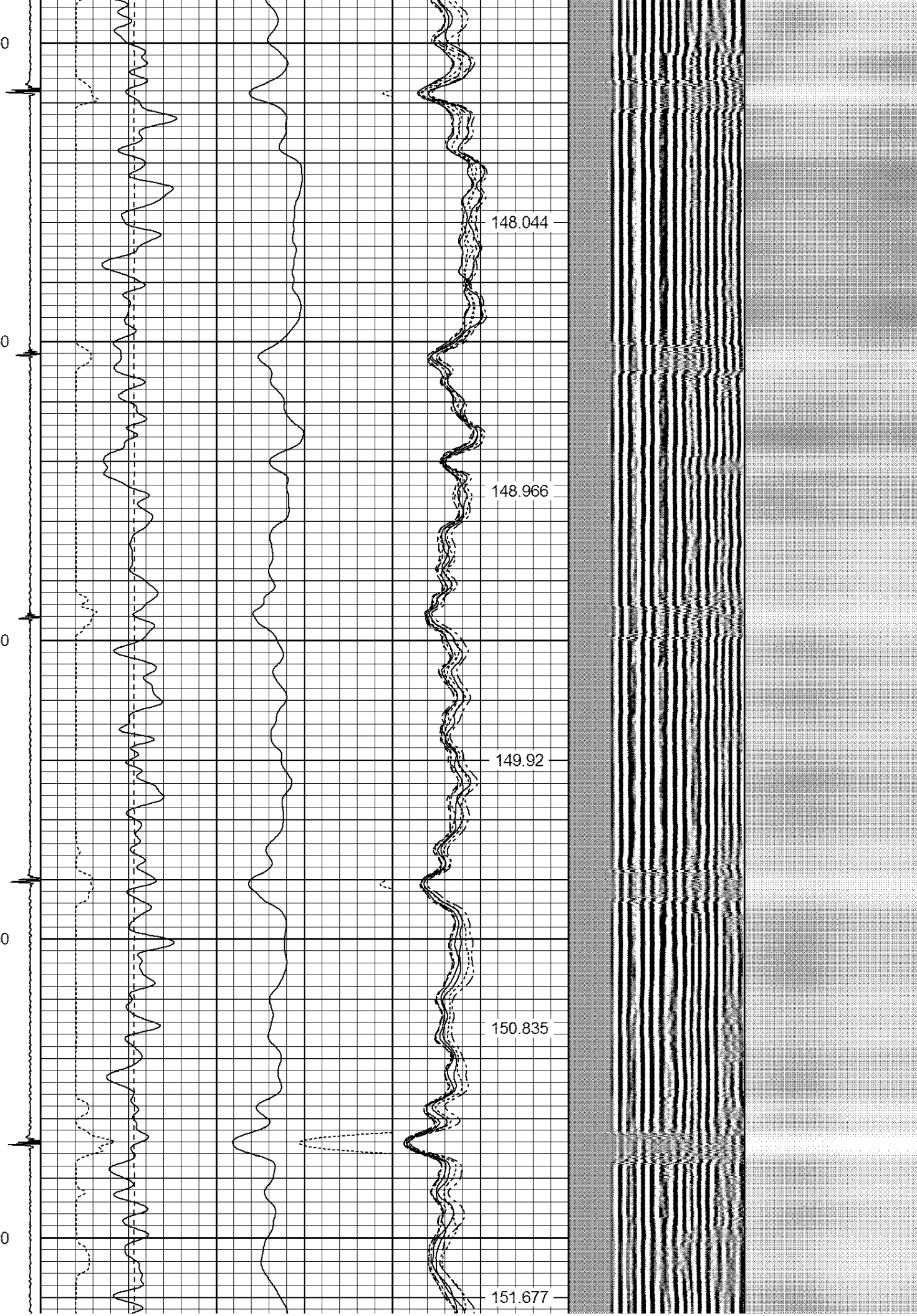
148.044

148.966

149.92

150.835

151.677



2650

2700

2750

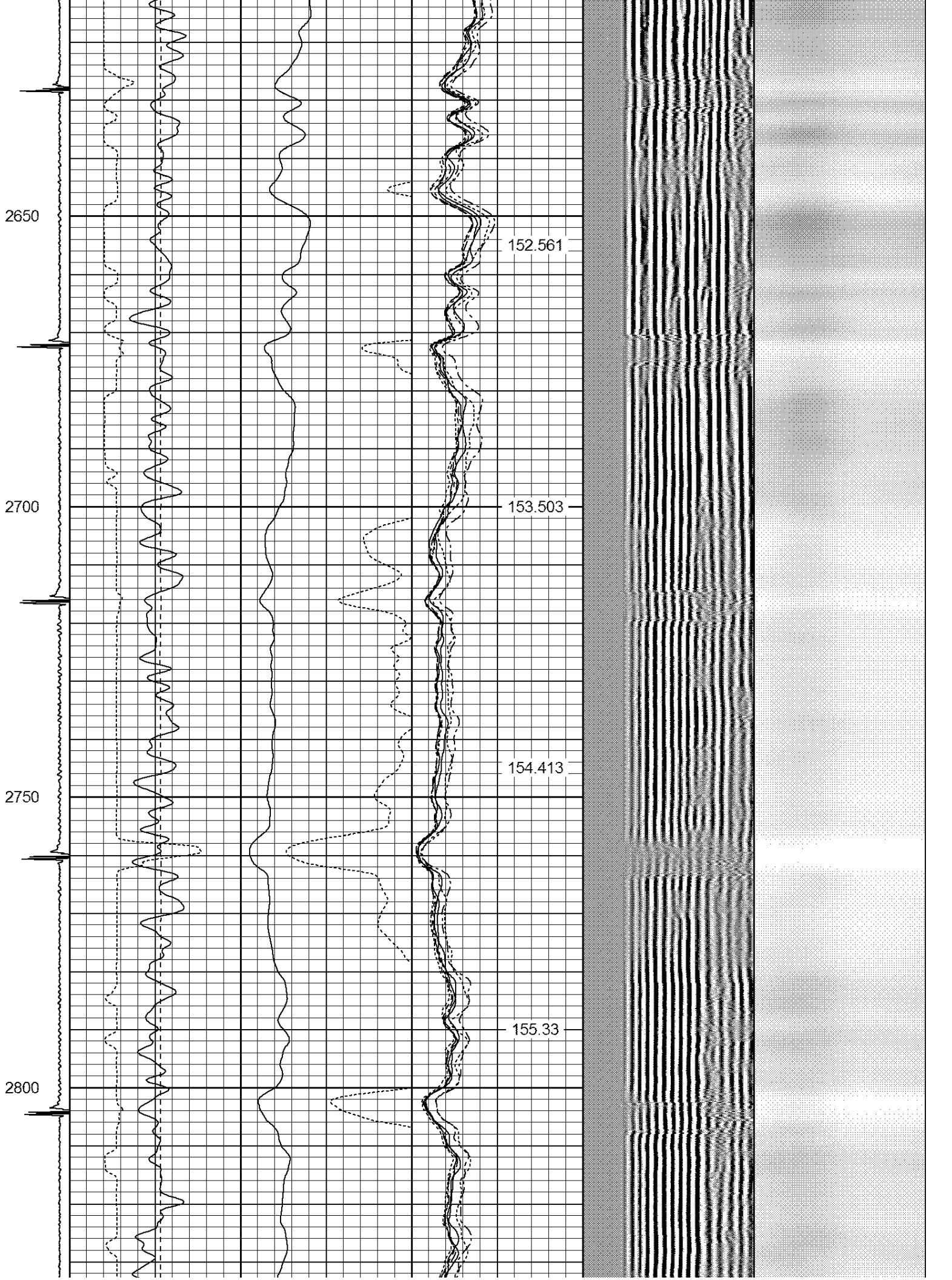
2800

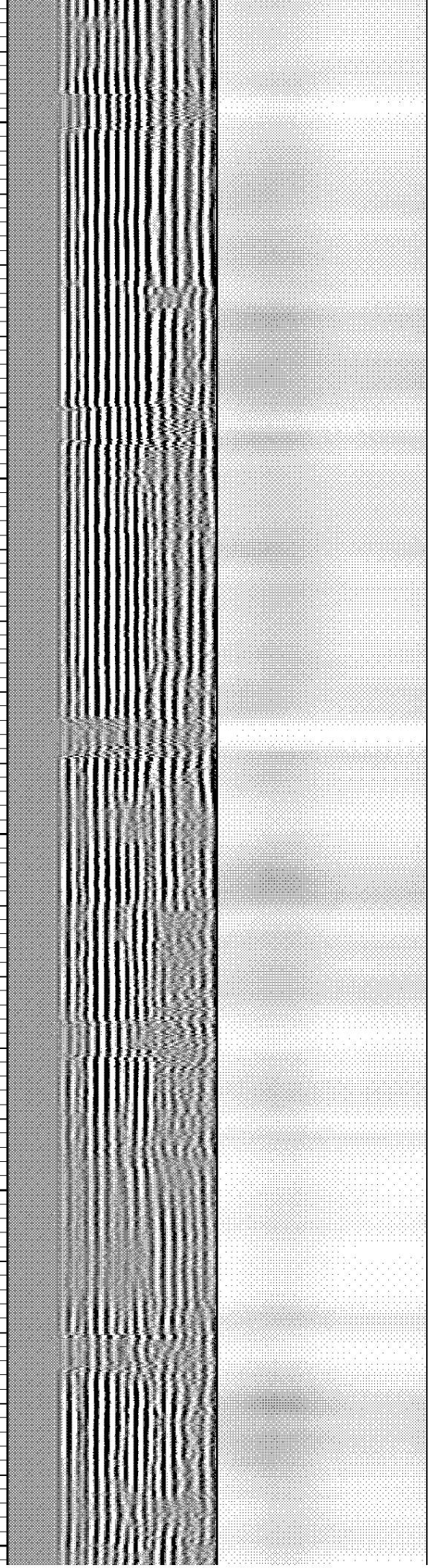
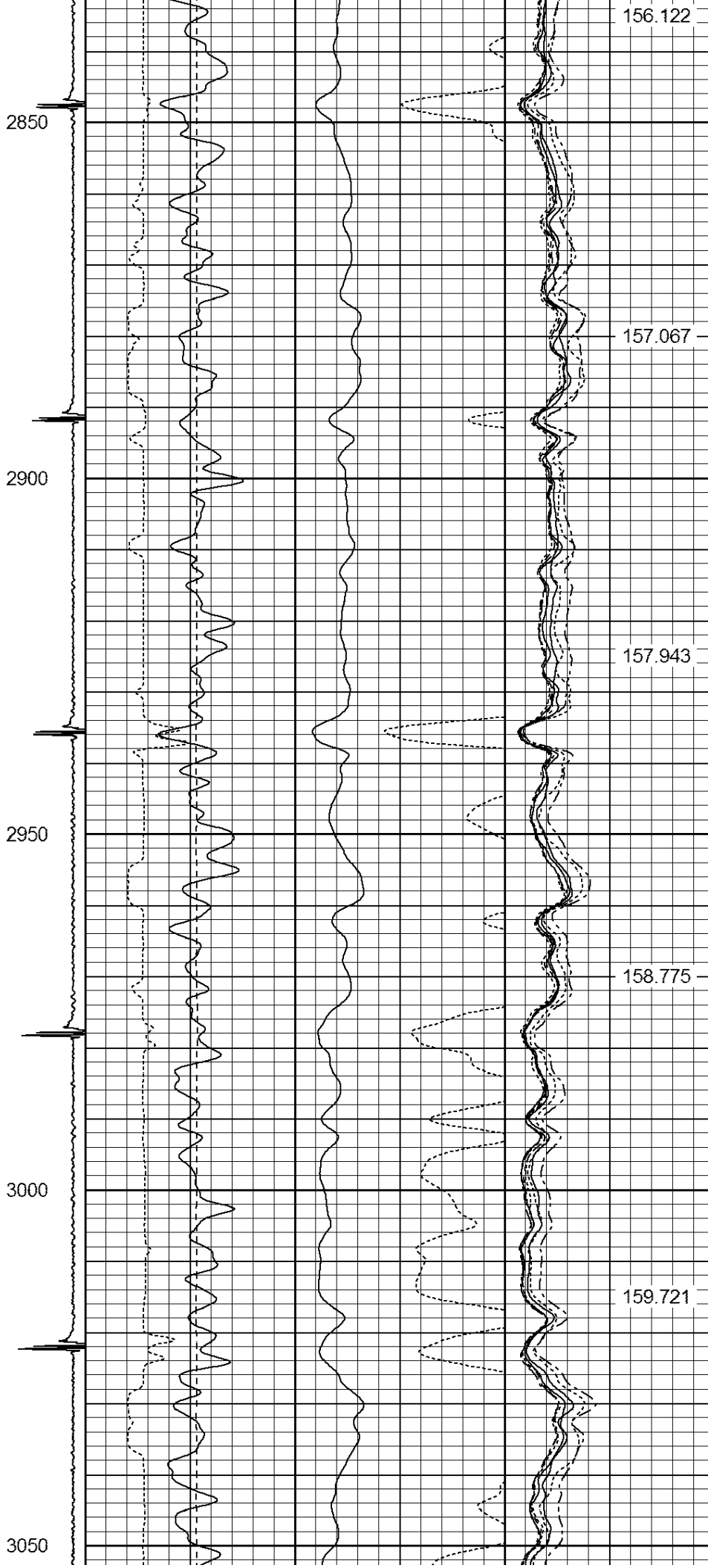
152.561

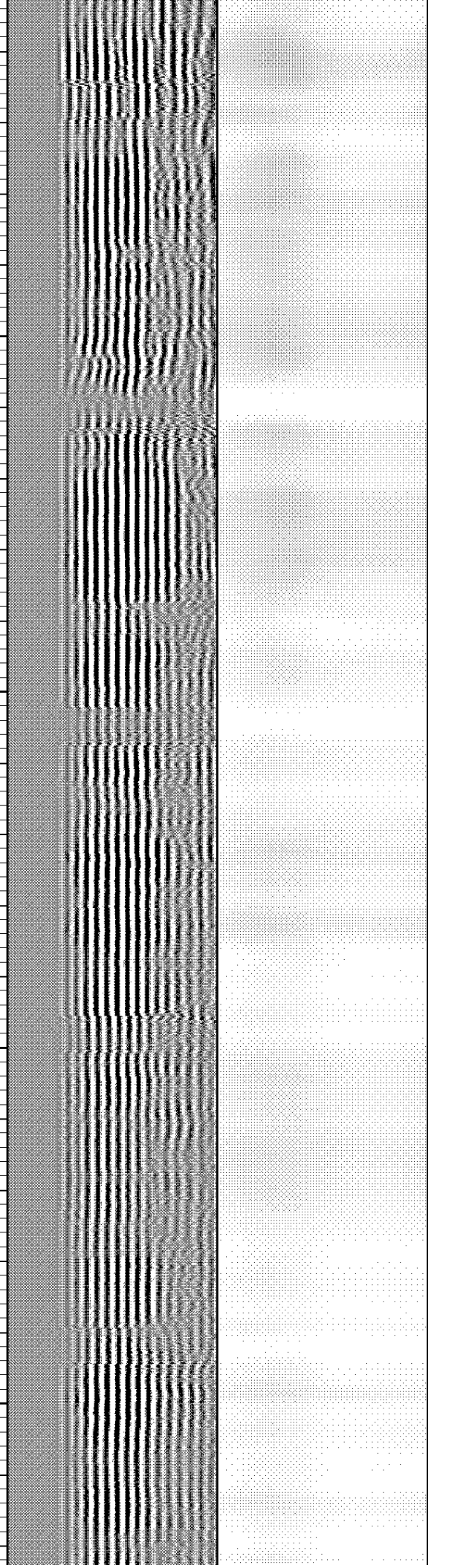
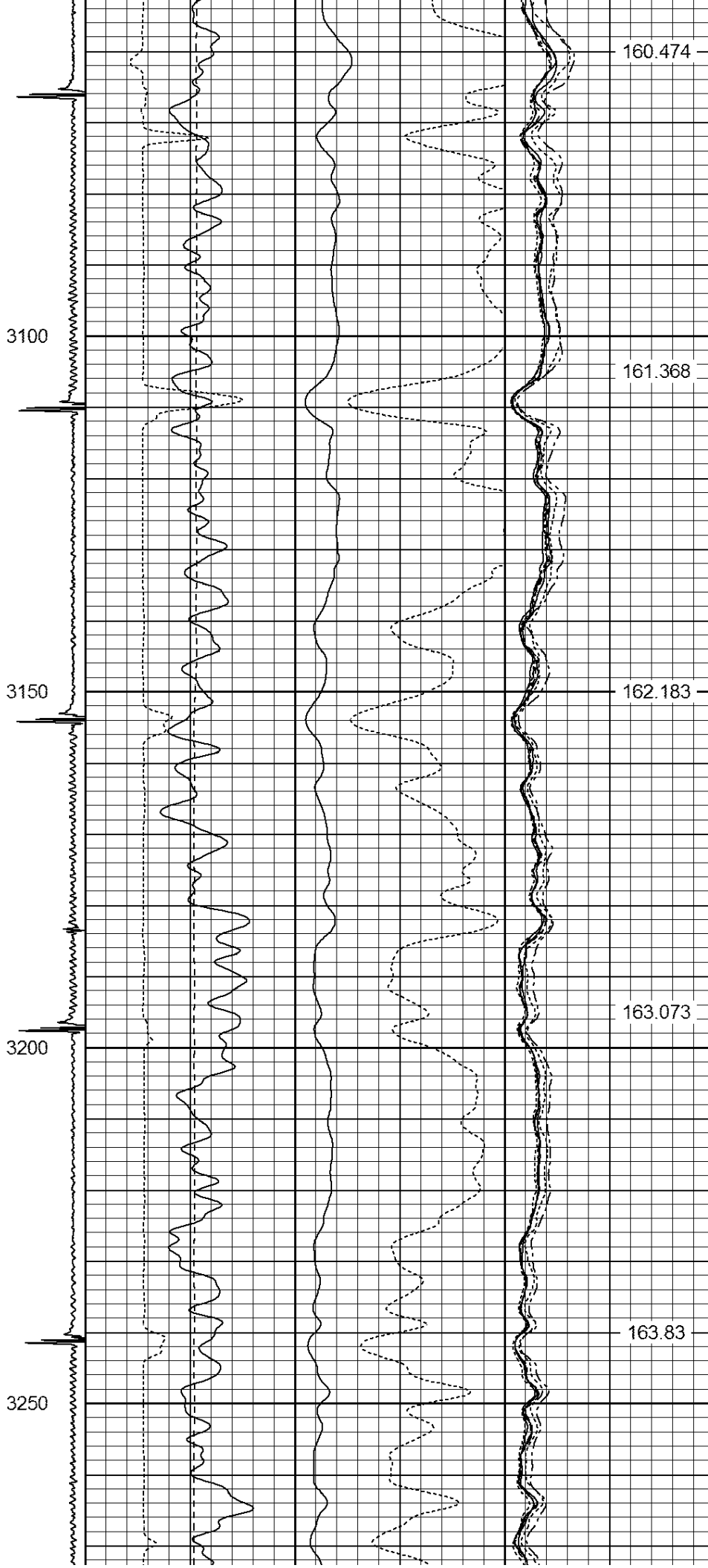
153.503

154.413

155.33







3300

3350

3400

3450

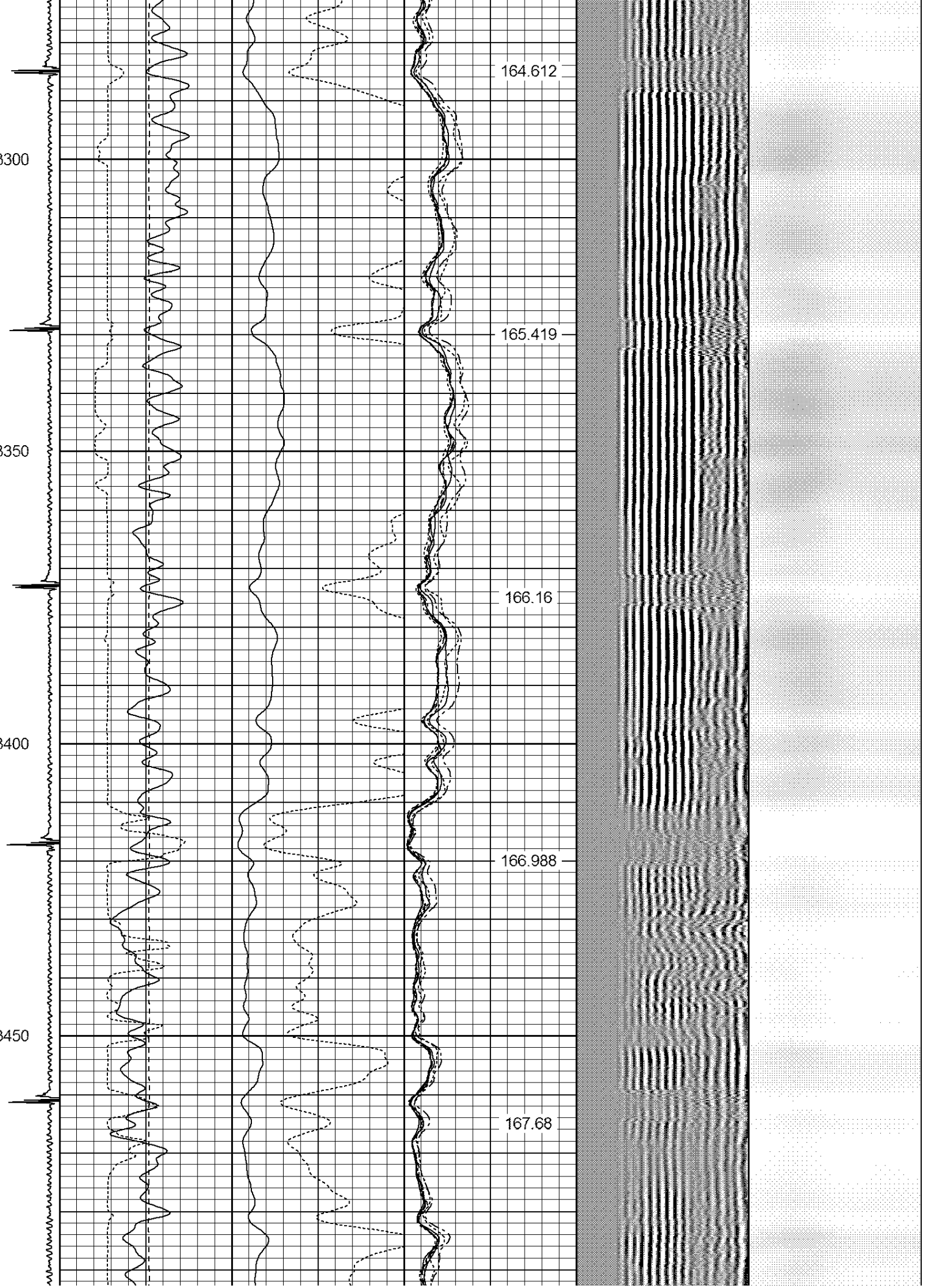
164.612

165.419

166.16

166.988

167.68



3500

3550

3600

3650

3700

168.471

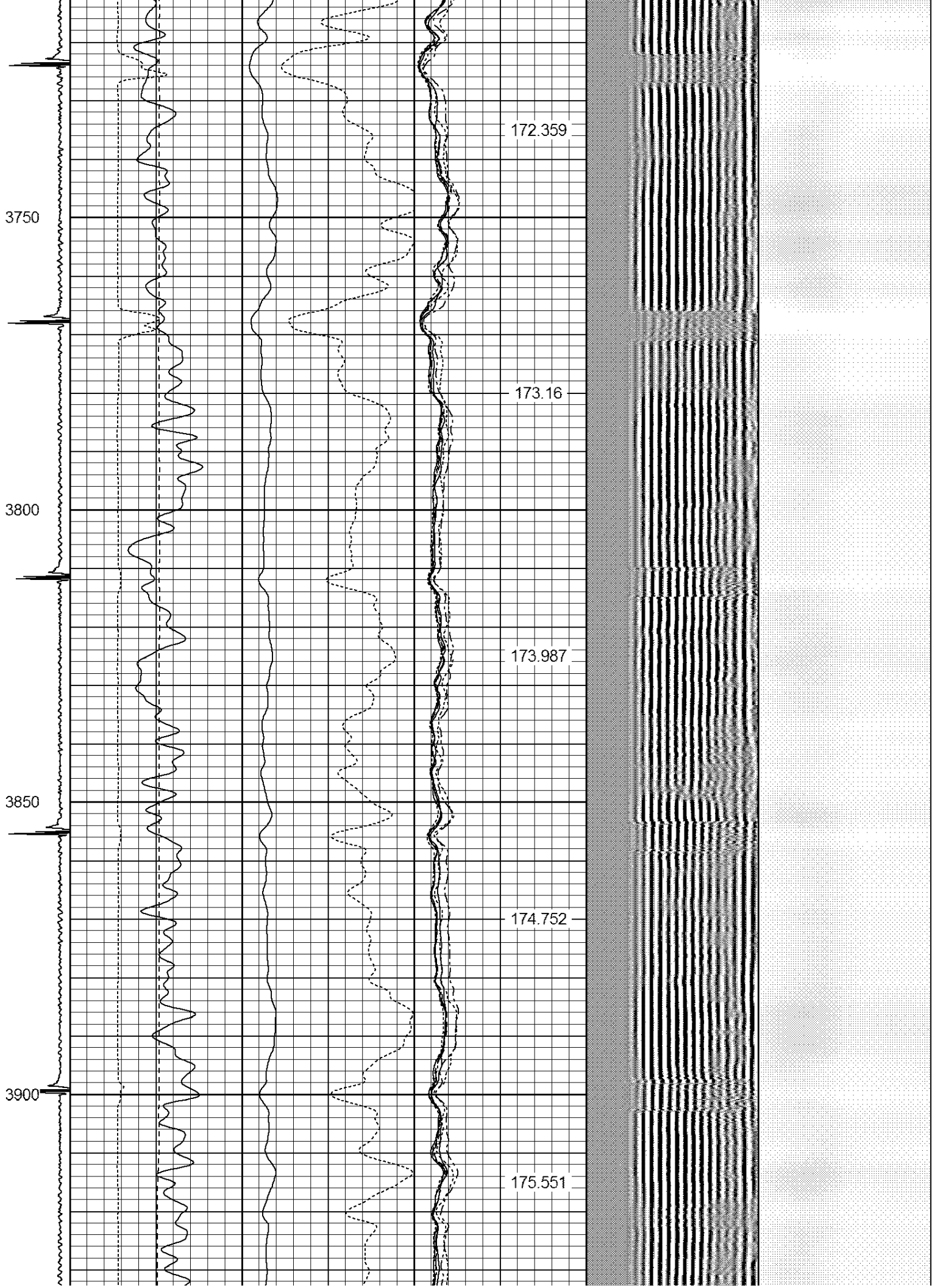
169.232

170.117

170.847

171.65





3950

4000

4050

4100

4150

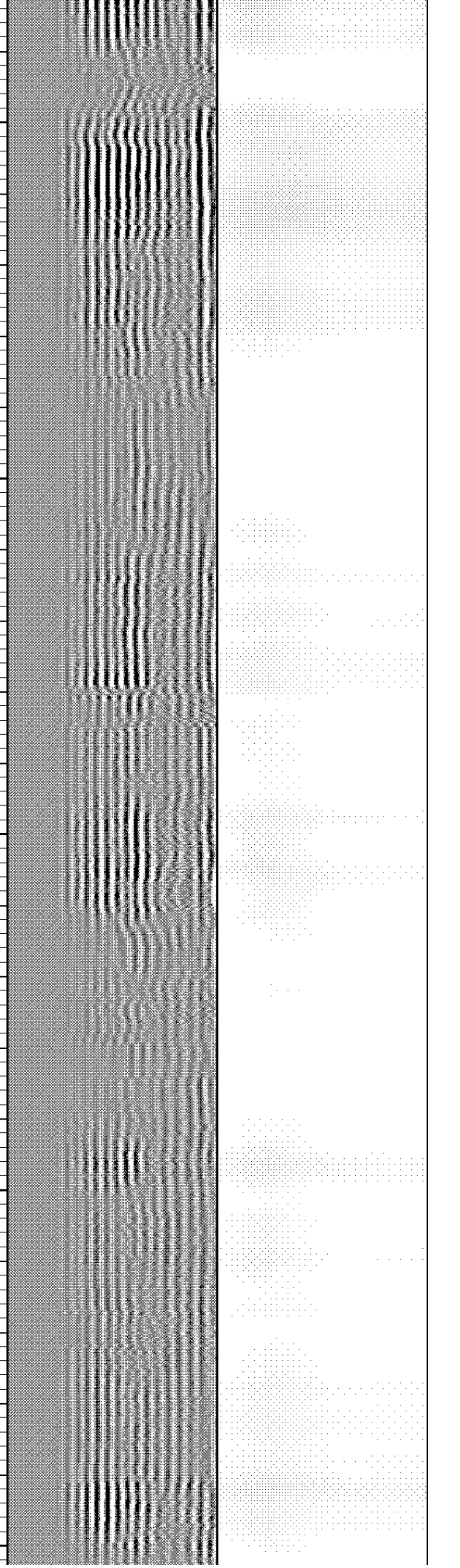
176.309

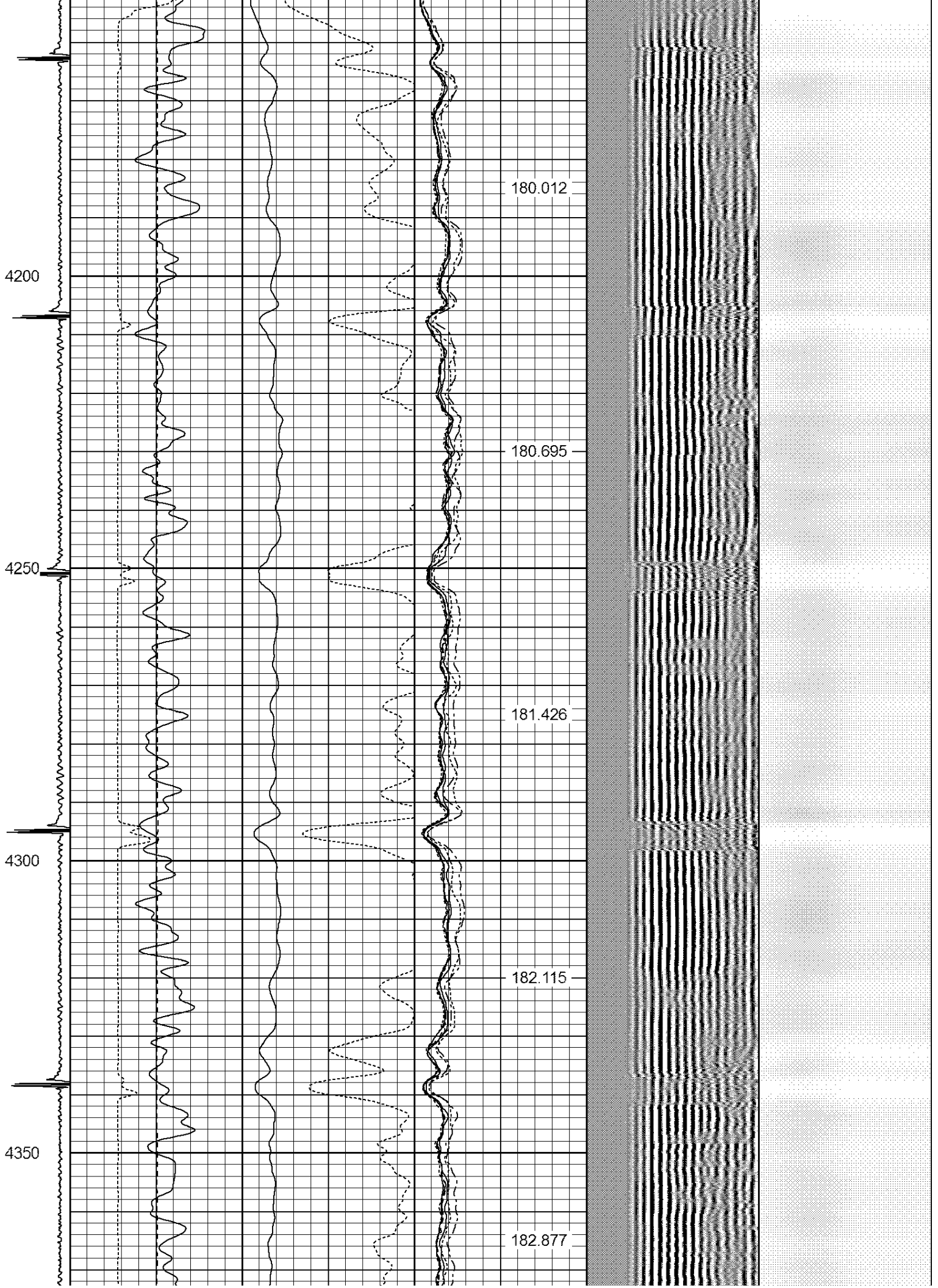
177.046

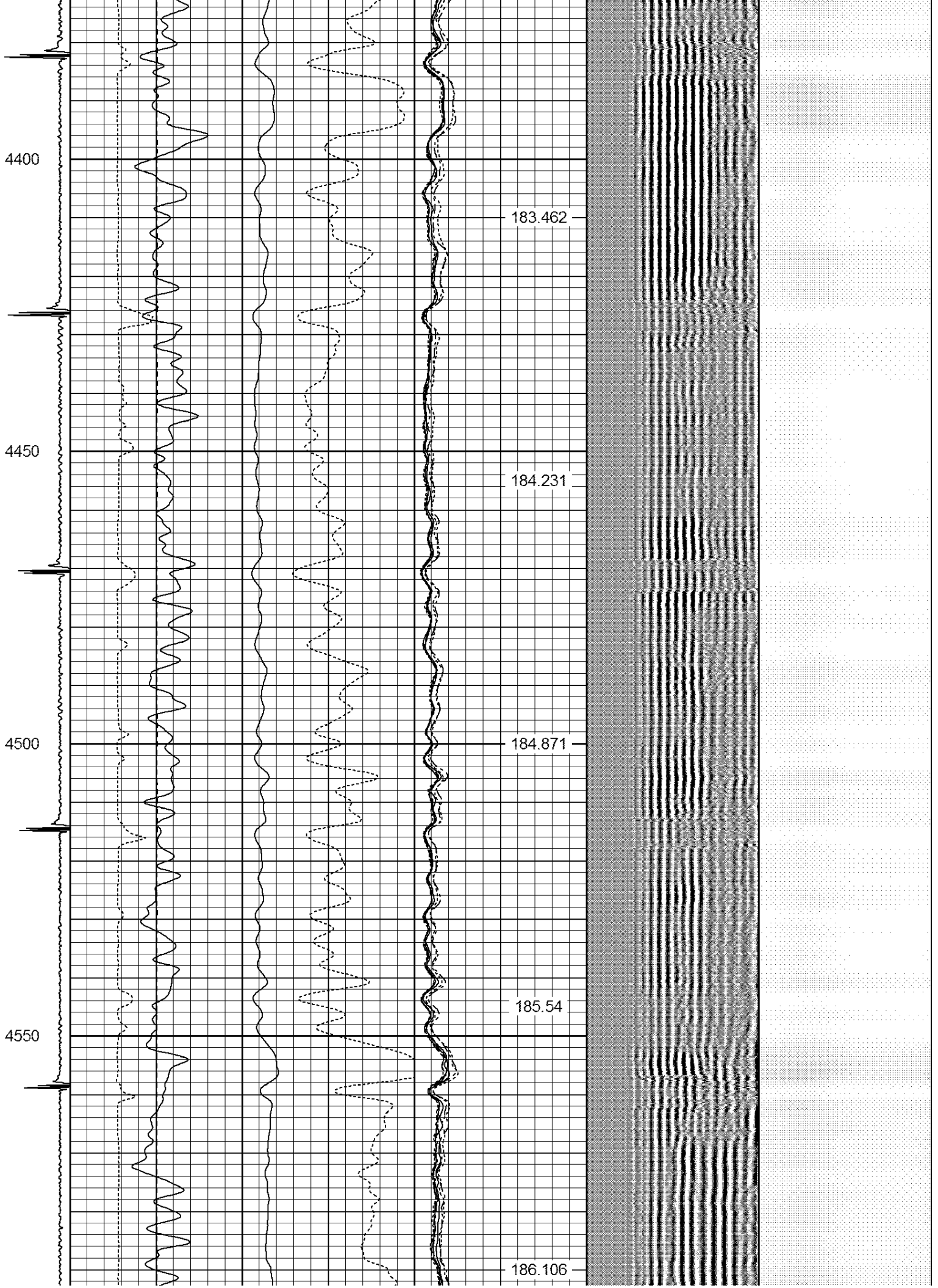
177.775

178.551

179.338







4600

4650

4700

4750

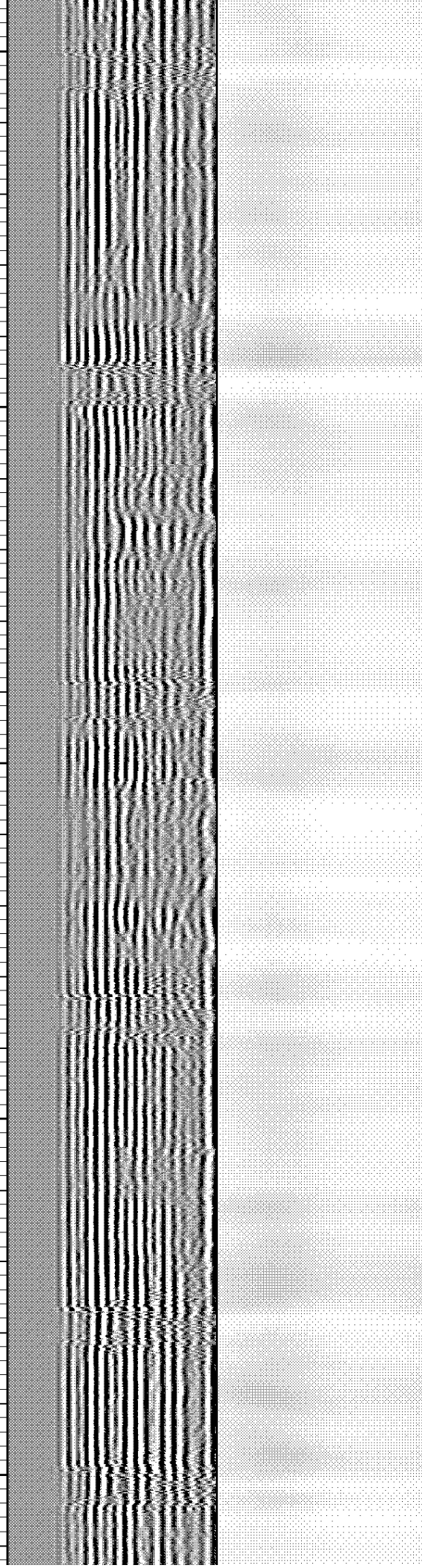
4800

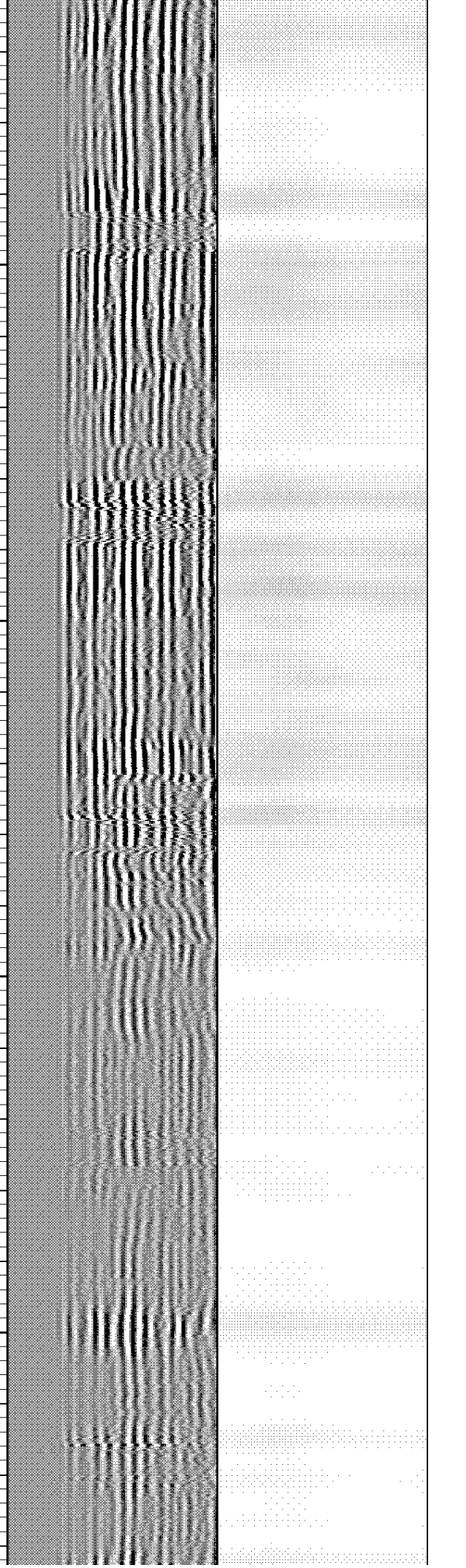
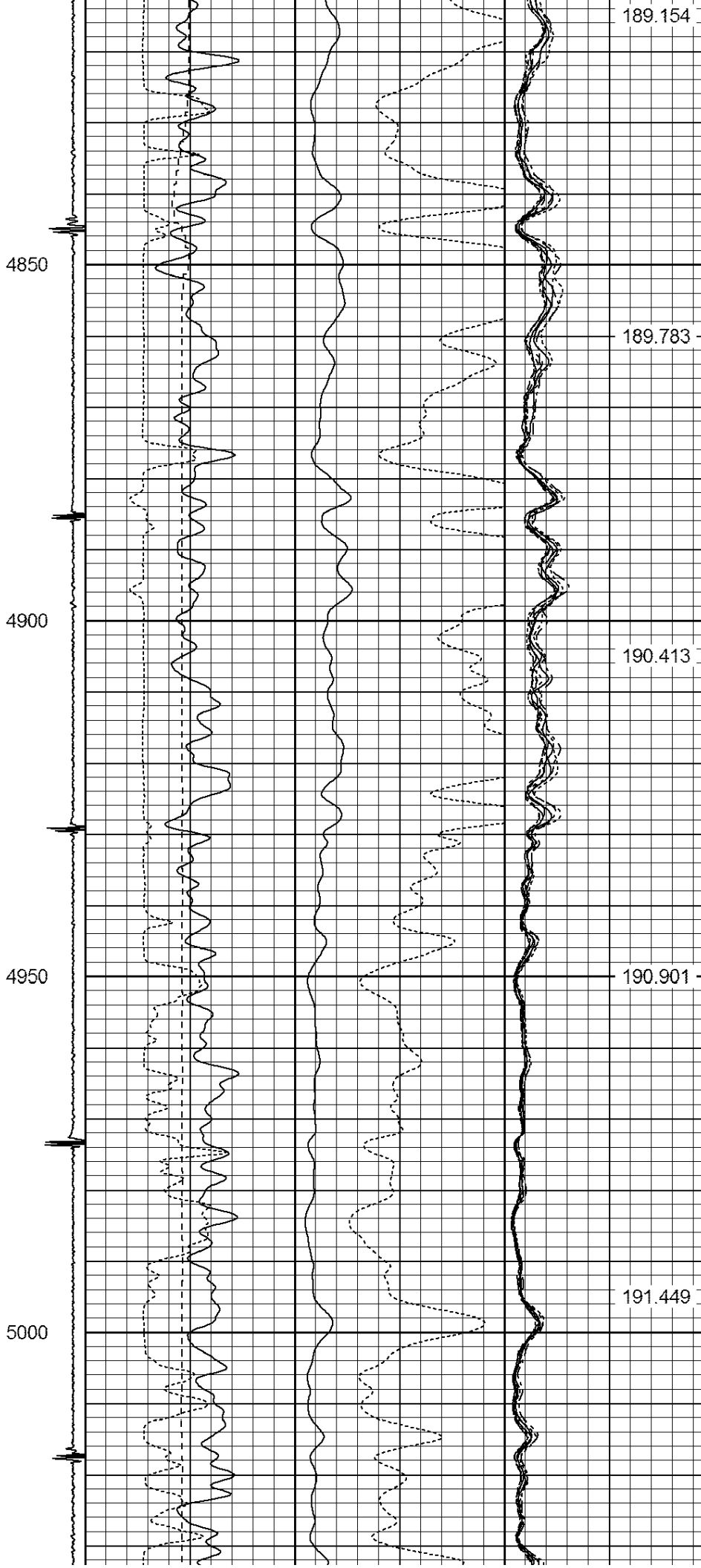
186.765

187.403

188.026

188.503





5050

5100

5150

5200

5250

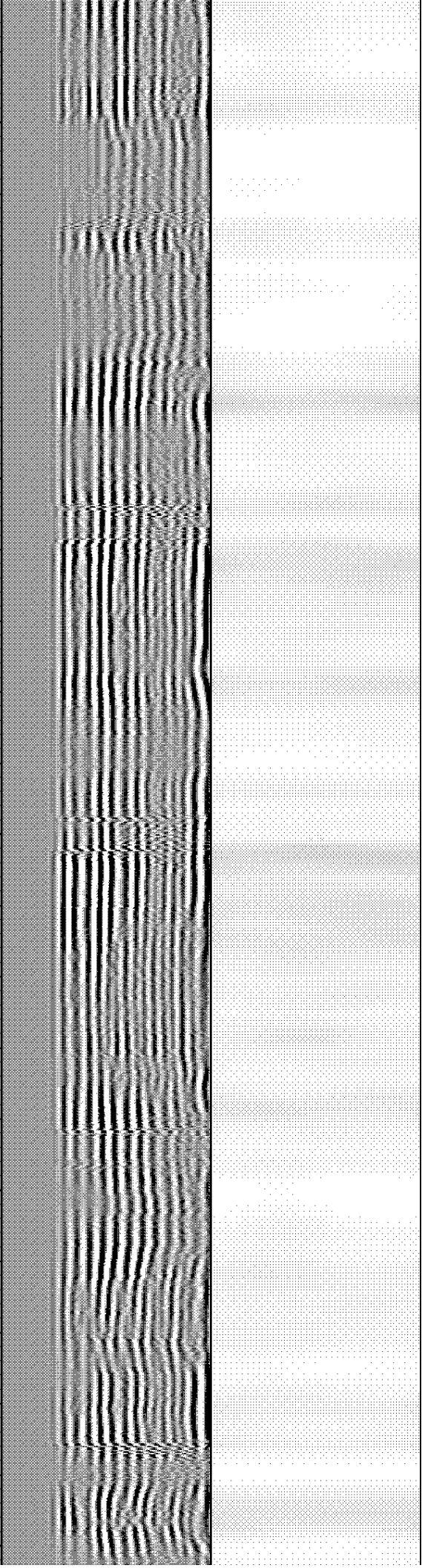
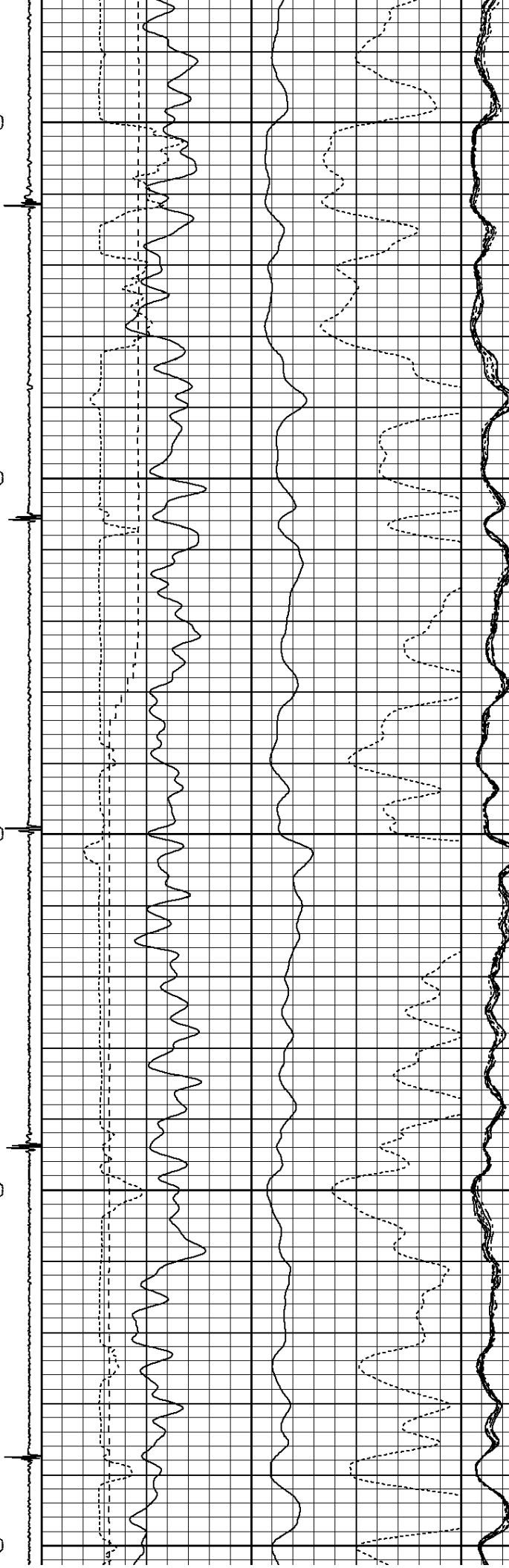
192.046

192.339

192.805

193.311

193.769



5300

5350

5400

5450

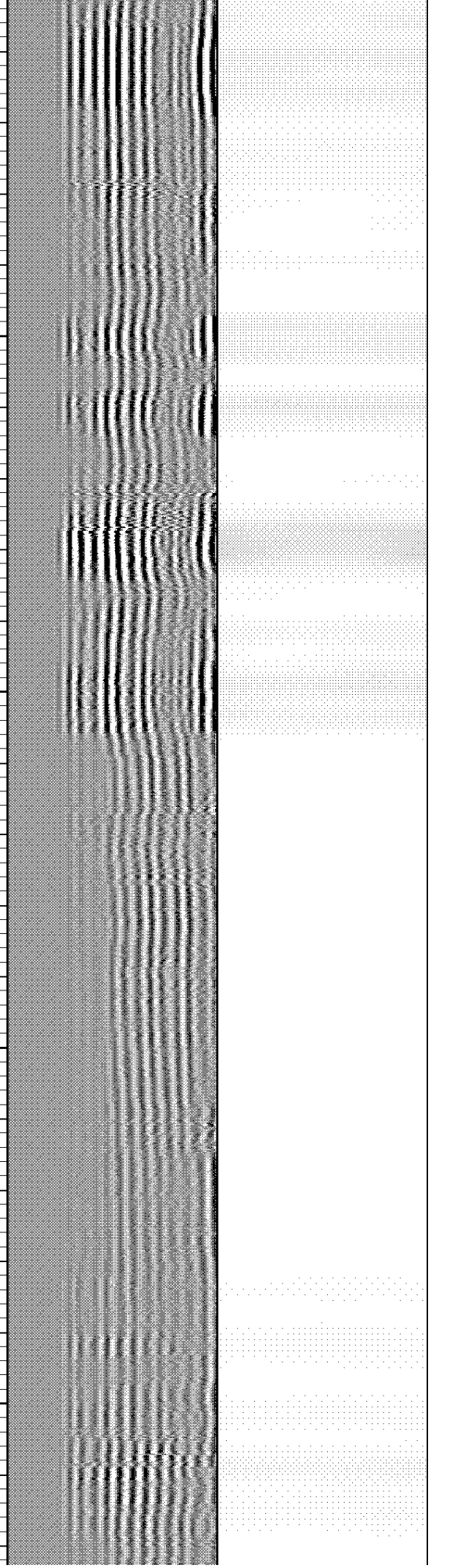
194.238

194.597

194.935

195.158

195.306



5500

5550

5600

5650

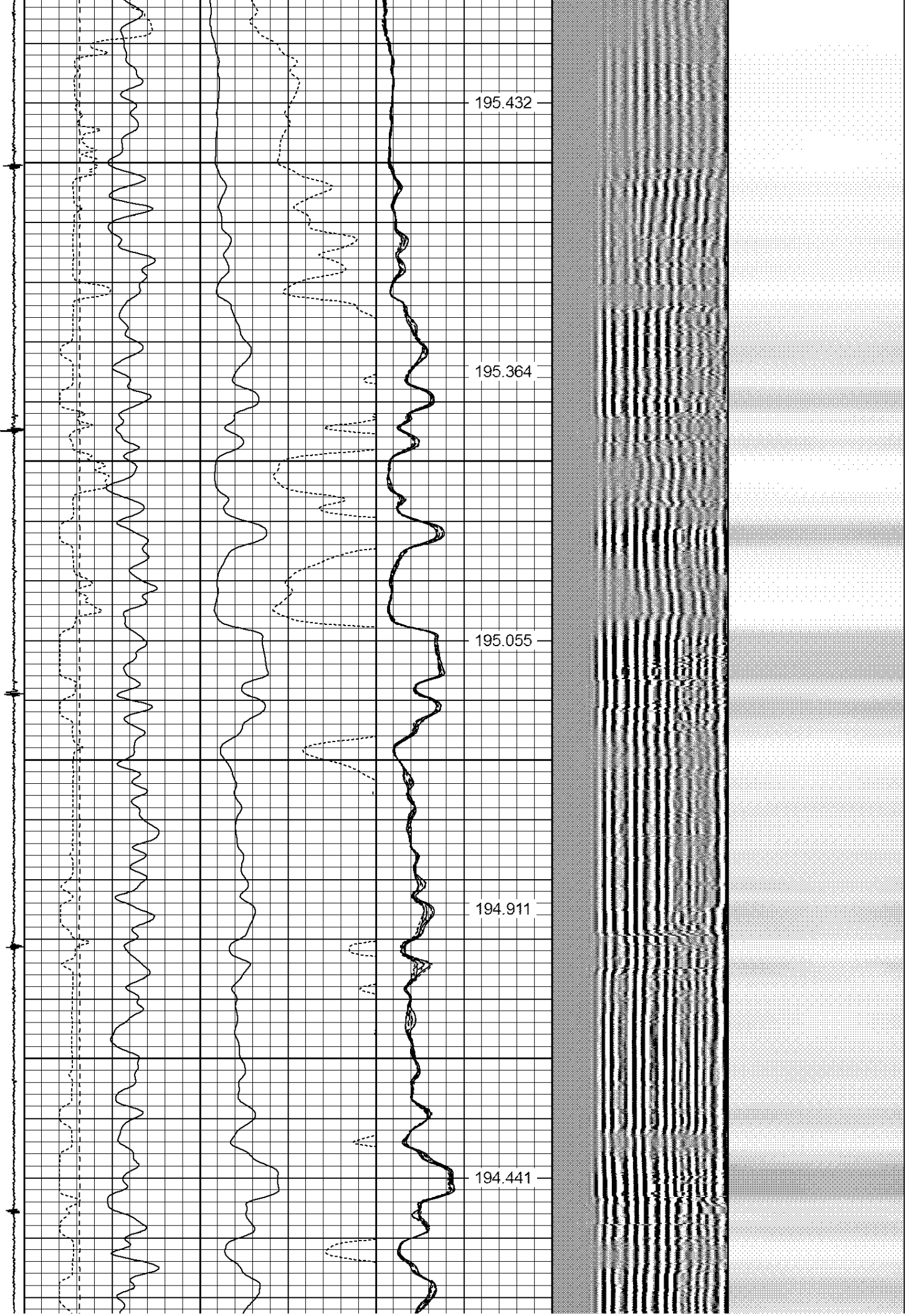
195.432

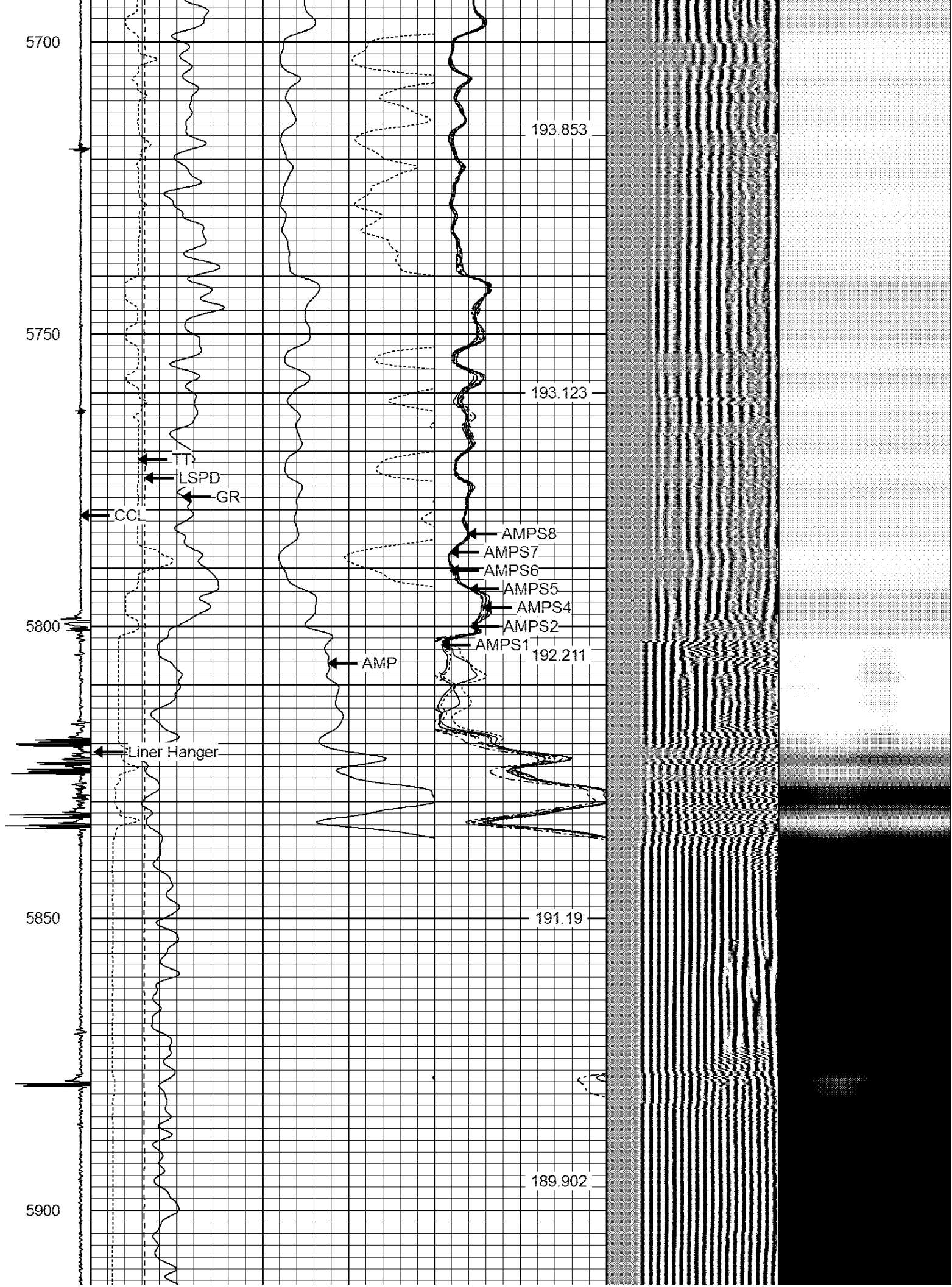
195.364

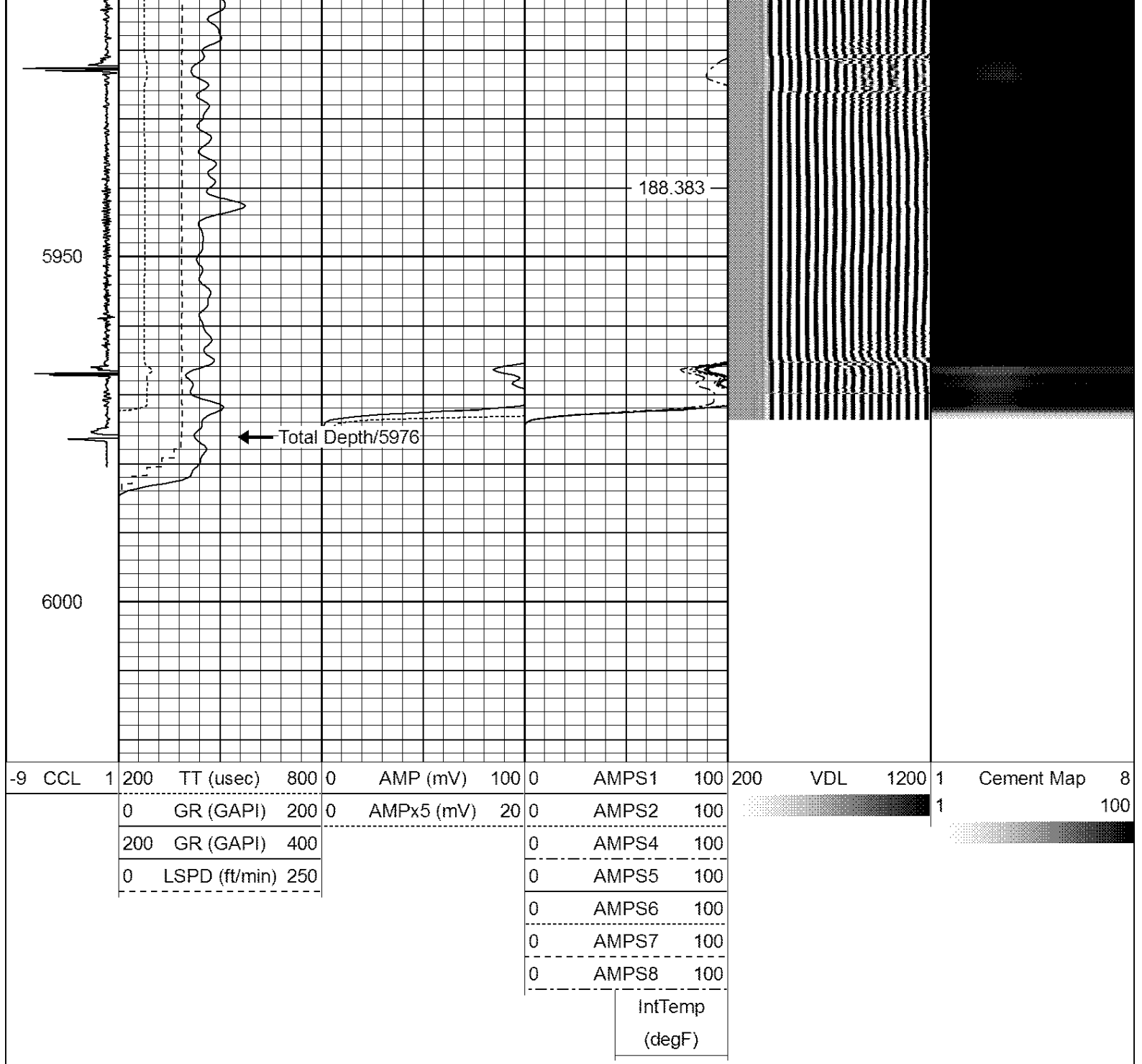
195.055

194.911

194.441

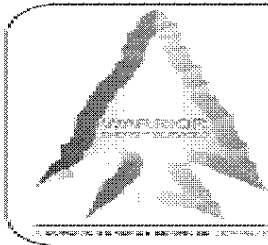






-9	CCL	1	200	TT (usec)	800	0	AMP (mV)	100	0	AMPS1	100	200	VDL	1200	1	Cement Map	8
		0	GR (GAPI)	200	0	AMPx5 (mV)	20	0	AMPS2	100					1		100
		200	GR (GAPI)	400				0	AMPS4	100							
		0	LSPD (ft/min)	250				0	AMPS5	100							
								0	AMPS6	100							
								0	AMPS7	100							
								0	AMPS8	100							

InfTemp
(degF)



WARRIOR
ENERGY SERVICES

Company BILL BARRET CORPORATION
 Well PAPPENHEIM 6-62-23-0560BH
 Field BRIGGSDALE
 County WELD
 State COLORADO