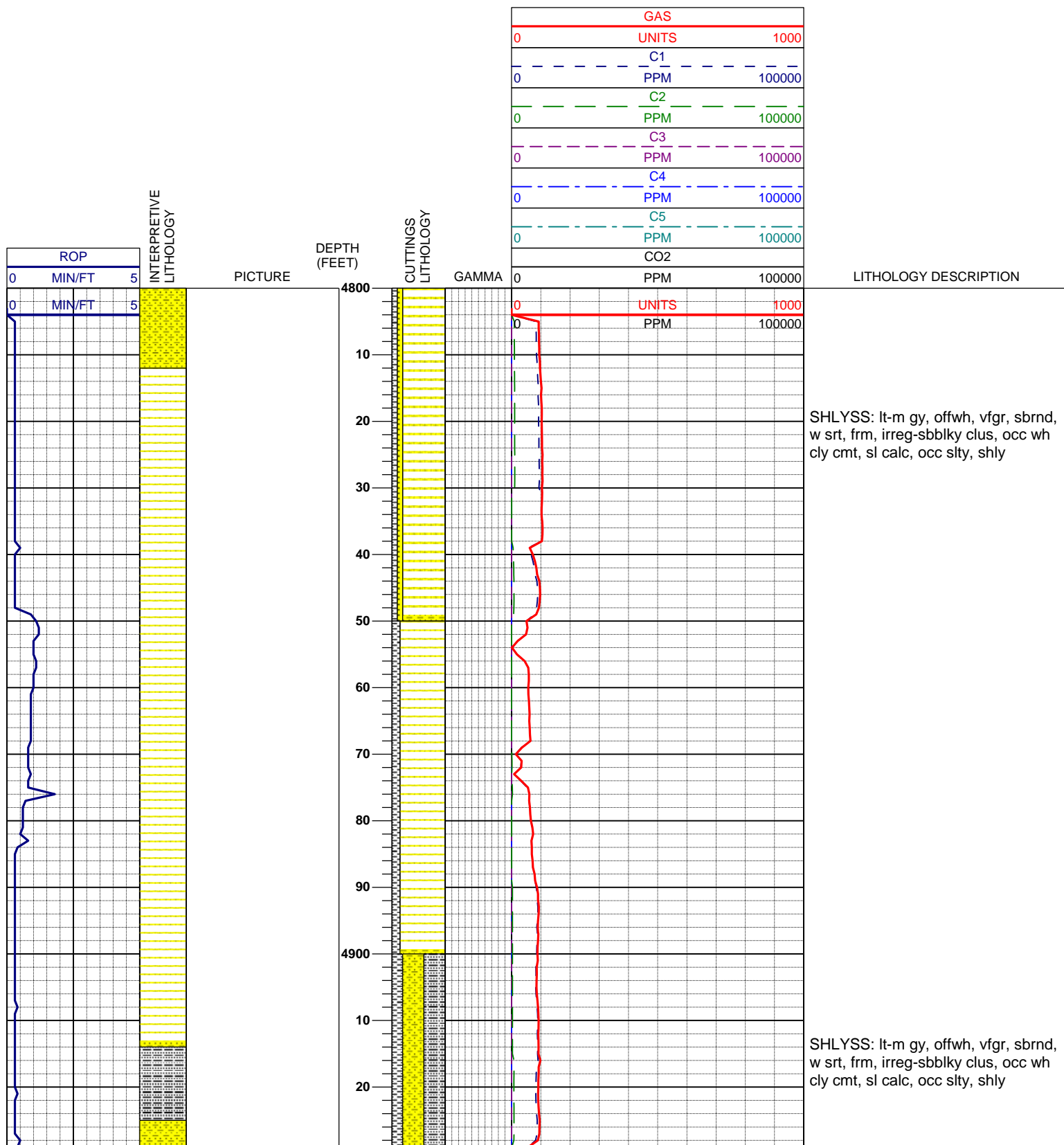
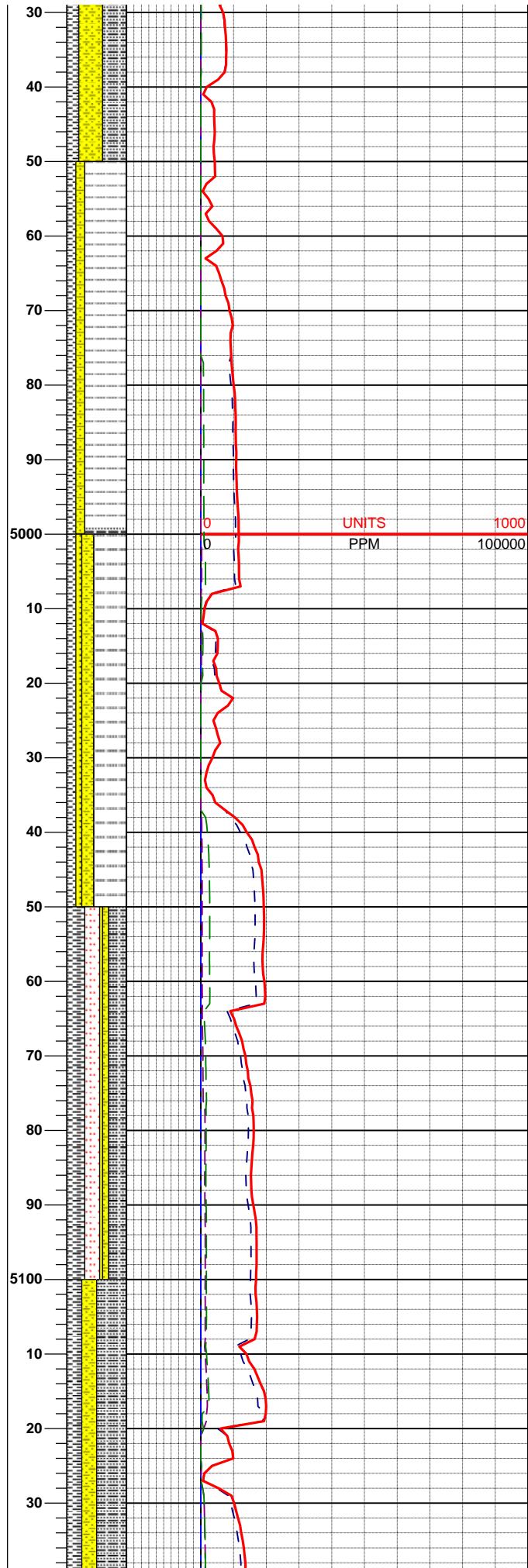
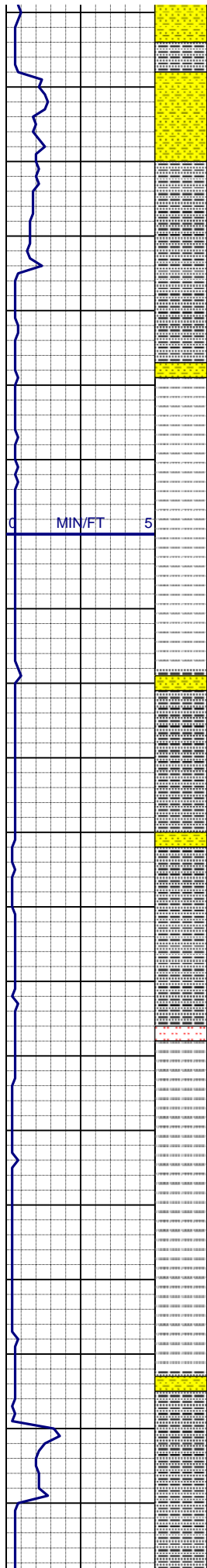


LOG created using L PLOT VH Version 3.0, October 06, 2011, Copyright (C) 1999-2009 Pason Systems Corp.

**OPERATOR:** CARRIZO OIL & GAS, INC  
**WELL:** STATE 16-1 #9-H 60W  
**PRINT DATE:** 10/6/2011 8:02:32 AM

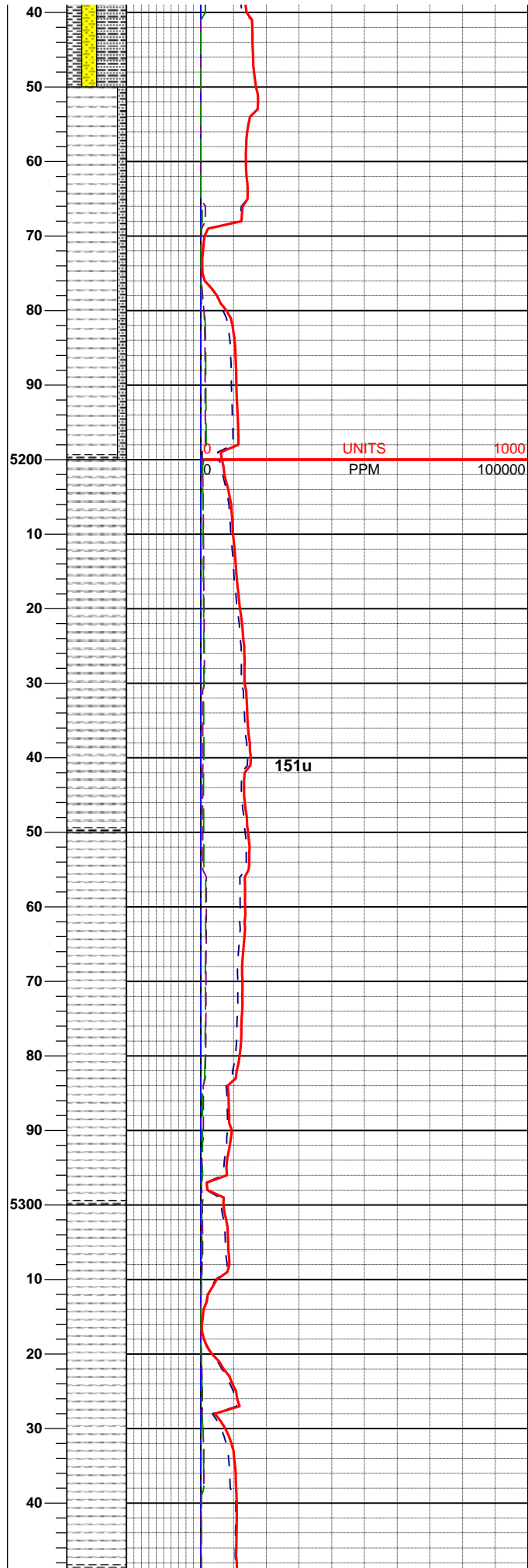
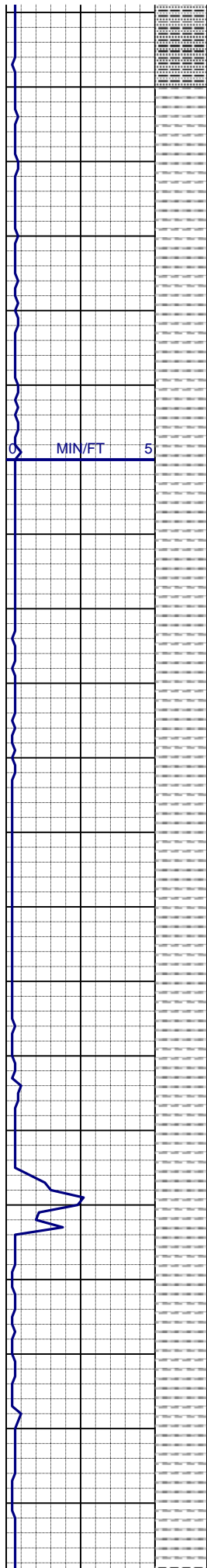
**LOCATION:** SEC 16, T9N, R60W  
**COUNTY:** WELD  
**STATE:** COLORADO





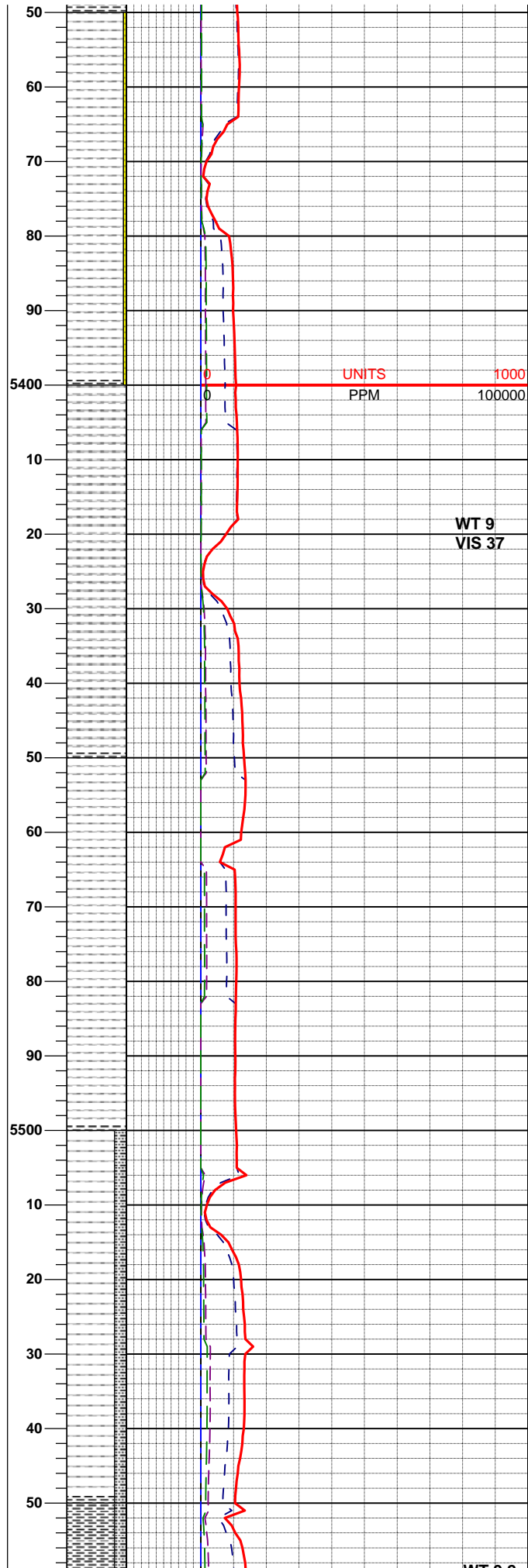
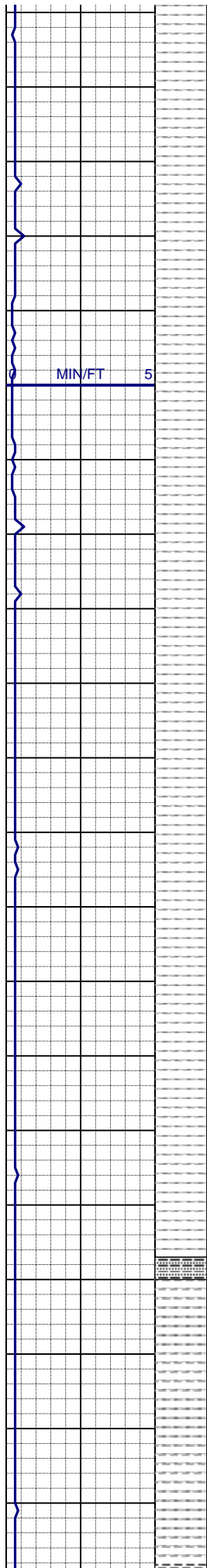
SLTYSH: m-dk gy brn, sbplty-sbblky, occ plty, firm, hom - occ mot, rthy - gt, mtx: arg - slty, non calc

SLTYSH: m-dk gy brn, sbplty-sbblky, occ plty, firm, hom - occ mot, rthy - gt, mtx: arg - slty, non calc



SH: m-dk gy brn, plty - sbbkly, firm, hom , rthy - gt, mtx: arg - slty, non calc

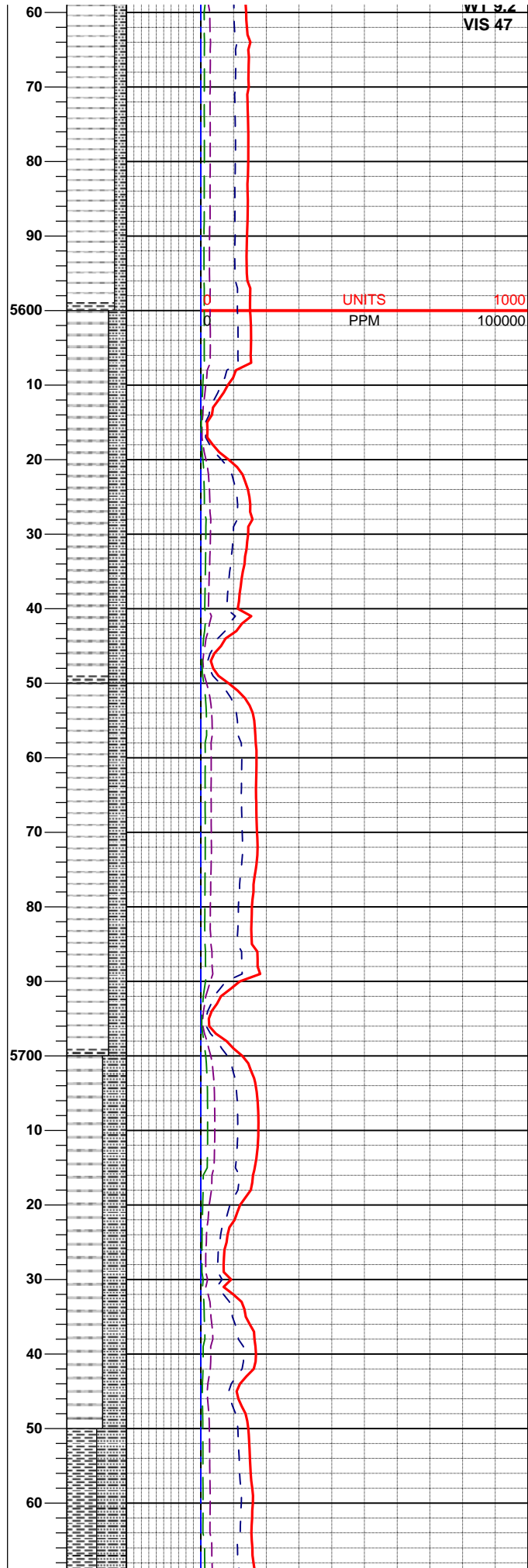
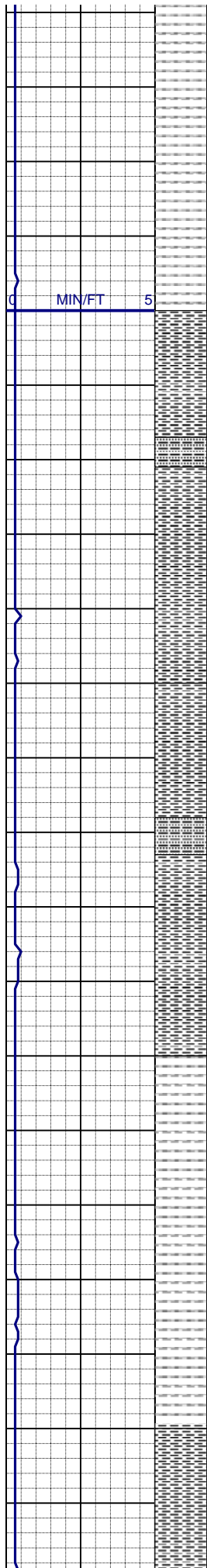
SH: m-dk gy brn, plty - sbbkly, firm, hom , rthy - gt, mtx: arg - slty, non calc, tr calcite



SH: m-dk gy brn, plty - sbbkly, firm,  
 hom , rthy - gt, mtx: arg - slty, non  
 calc, tr calcite

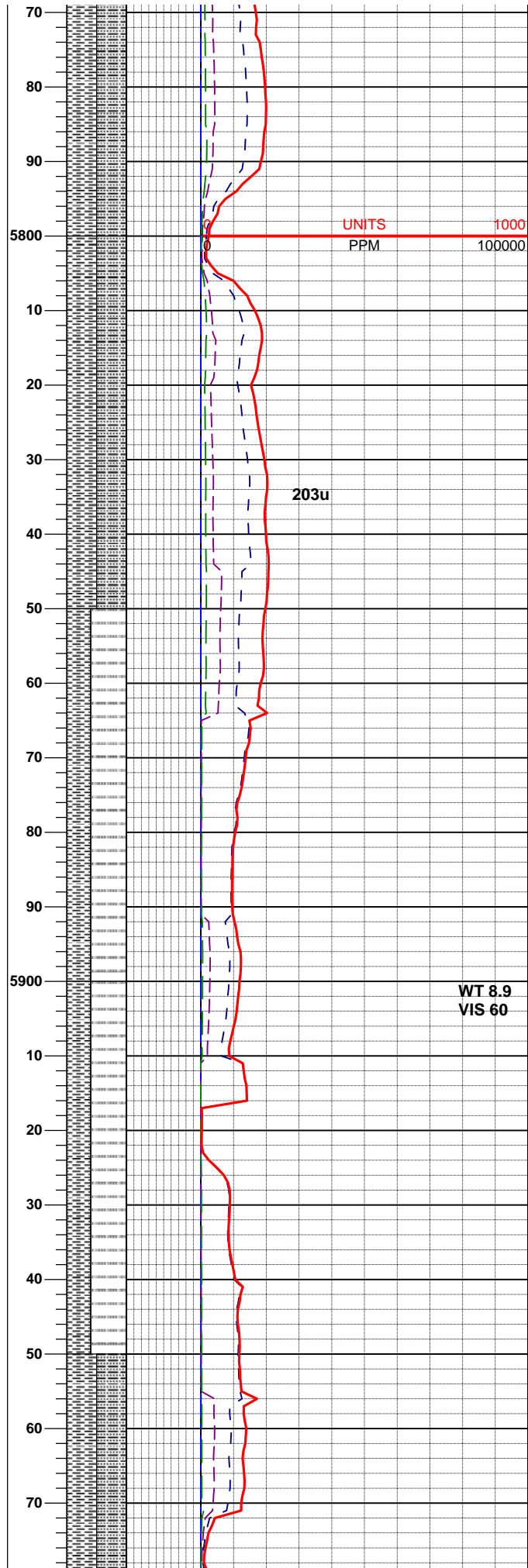
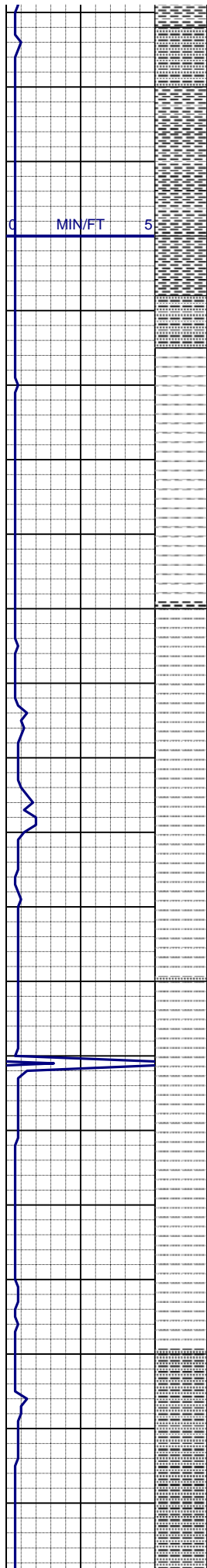
SH: m-dk gy brn, plty - sbbkly, firm,  
 hom , rthy - gt, mtx: arg - slty, non  
 calc, tr calcite

SH: m-dk gy brn, plty - sbbkly, firm,  
 hom , rthy - gt, mtx: arg - slty, non  
 calc, tr calcite



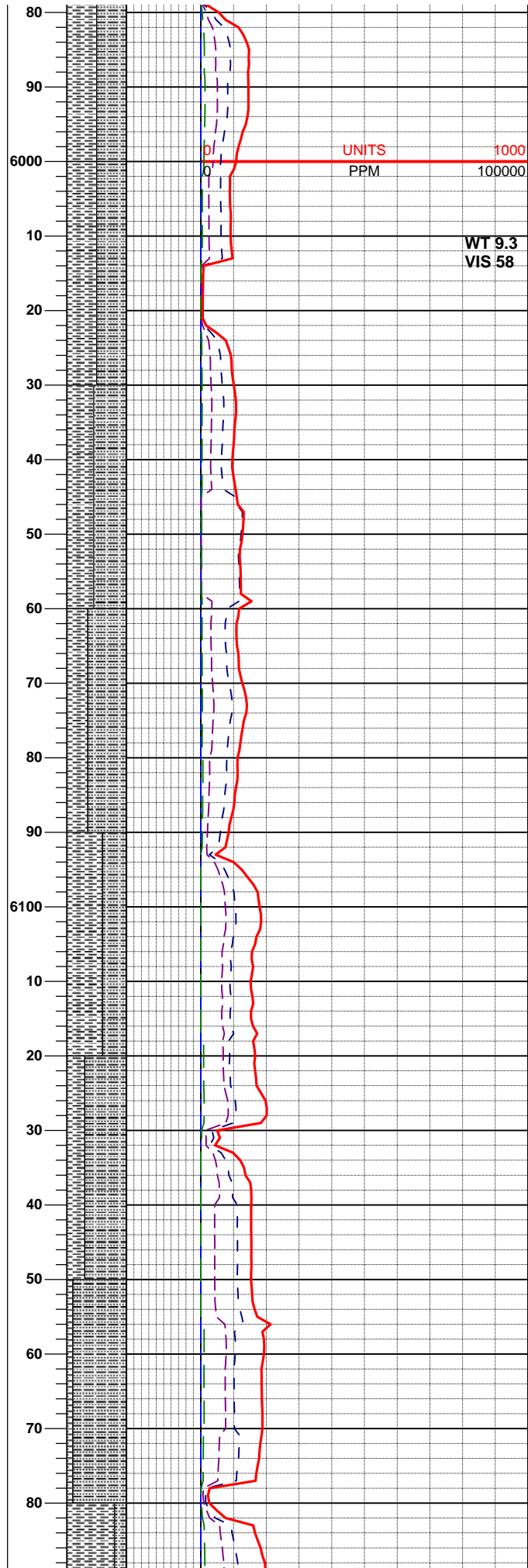
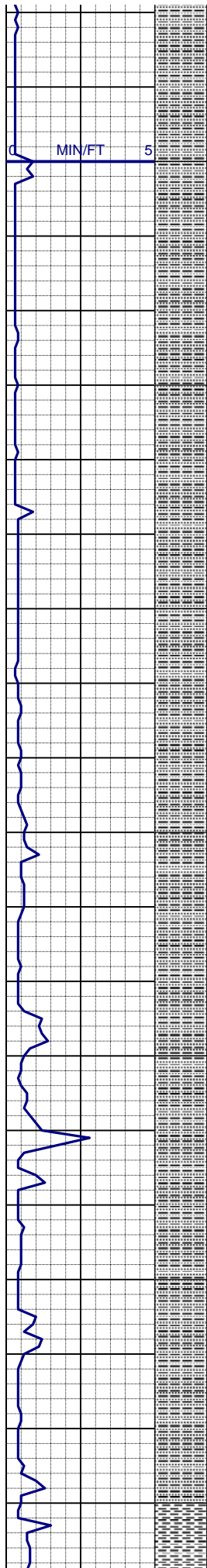
SH: m-dk gy brn, sbply - sbbly,  
occ pty, mod firm, hom, rthy - gt,  
mtx: arg - slty, sl calc, tr calcite

SH: m-dk gy brn, sbply - sbbly,  
slty ip, mod firm, hom , rthy - gt,  
mtx: arg - slty, sl calc, tr calcite



SLTYSH: m-dk gy brn, sbply-  
sbbly, occ pty, firm, hom - occ  
mot, rthy - gt, mtx: arg - slty, sl calc

SLTYSH: m-dk gy brn, sbply-  
sbbly, occ pty, firm, hom - occ  
mot, rthy - gt, mtx: arg - slty, sl calc



30' Samples

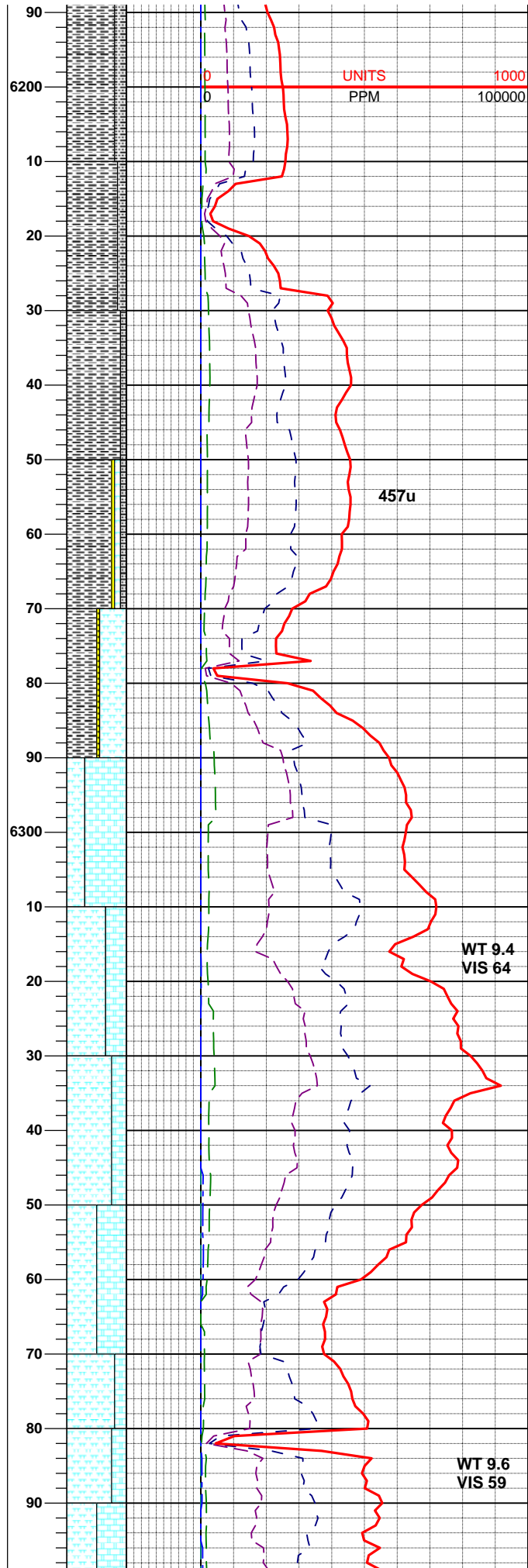
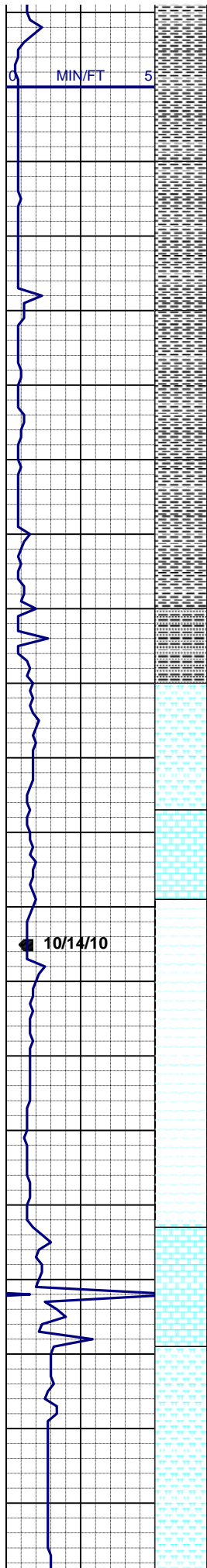
WT 9.3  
VIS 58

SLTYSH: m-dk gy brn, sbply-sbply, occ pty, firm, hom - occ mot, rthy - gt, mtx: arg - slty, sl calc, tr pyr

SLTYSH: m-dk gy brn, sbply-sbply, occ pty, firm, hom - occ mot, rthy - gt, mtx: arg - slty, non calc, tr pyr

SLTYSH: m-dk gy brn, sbply-sbply, occ pty, firm, hom - occ mot, rthy - gt, mtx: arg - slty, non calc, tr pyr

SH: m-dk gy brn, sbply-sbply, occ pty, slty in, mod firm, firm, hom, occ



pty, slty ip, mod firm-firm, hom - calc  
 mot, rthy - gt, mtx: arg - slty, non calc

**20' Samples**

SH: dk gy-brn, pty-sbblky, slty ip, mod firm-firm, hom, rthy-gt, mtx: arg-slty, non calc

**PROG TOP NIOBRARA 6245'**

SH: ltgy-gy-brn, slty ip, sbpty-sbblky, frm, hom, rthy-gt, mtx: arg-slty, non calc, sme pyr

MRL: dk gy brn, sbpty - sbblky, mod firm - firm, rthy - slty - lmpy tex, mot - arg, pred org calc mtx, v calc

**LOGGERS TOP NIOBRARA 6280'**

CHK: lt gy - lt gy brn, mot, sme wh sbpty - sbblky, sft - firm - sme brit, rthy, v calc, tr pyr

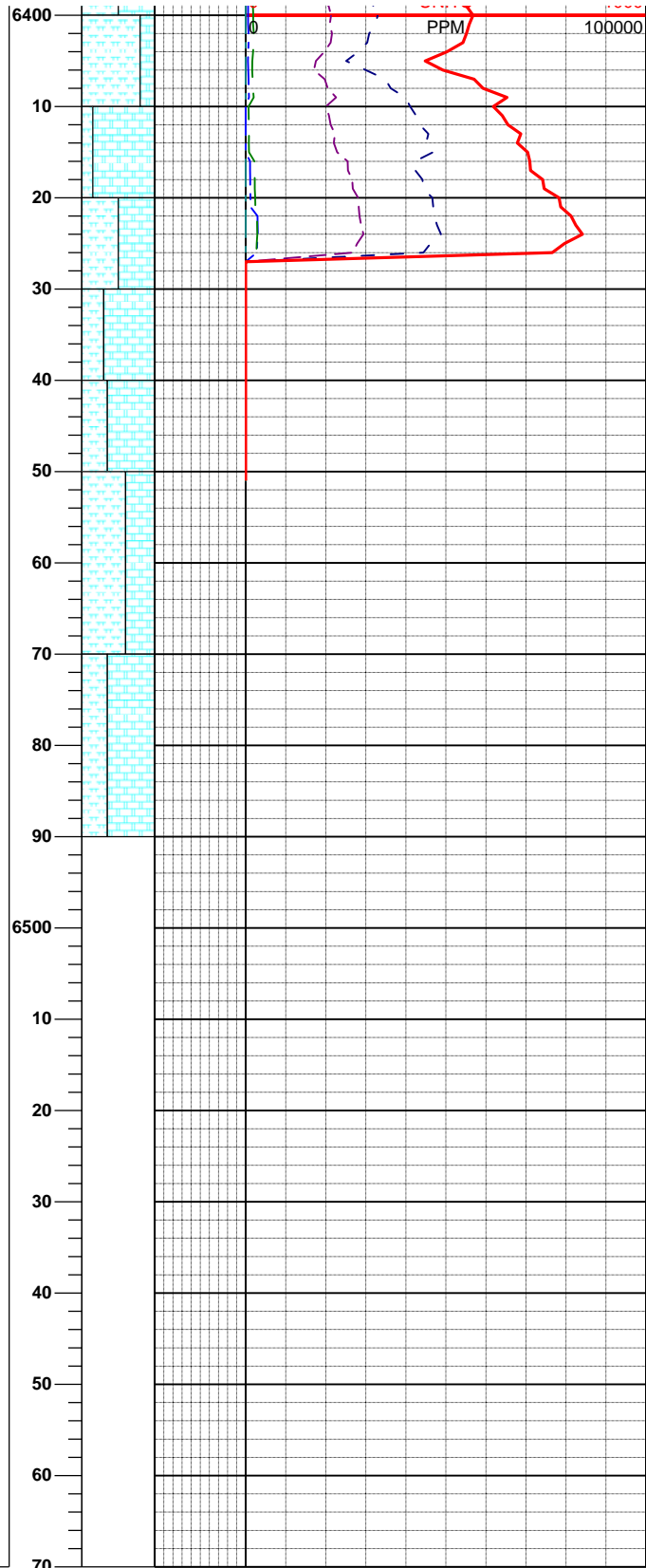
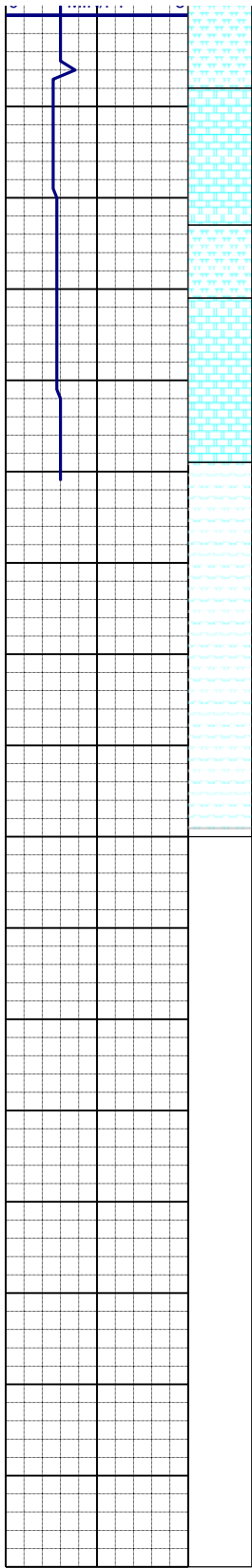
MRL: gy-brn, sbpty - sbblky, occ pty, mod firm - firm, rthy - slty - lmpy tex, mot - arg, pred org calc mtx, v calc, tr pyr, tr bent

**916u**

CHK: lt gy - lt gy brn, mot, sme wh sbpty - sbblky, sft - firm - sme brit, rthy, v calc, tr pyr

**10' Samples**

MRL: gy-brn, sbpty - sbblky, occ pty, mod firm - firm, rthy - slty - lmpy tex, mot - arg, pred org calc mtx, v calc, tr pyr, tr bent



TTTTTT