



Gamma Ray TVD  
(Scale: 5":100' (10'))

Company: CAFRIZO OIL & GAS, Inc.

State: CO

Well: STATE #16-11-9-60 H

County: WELD

Field: PAWNEE BUTTES

Country: USA

Well ID: 05-123-31642

Job Number: DR10100800-01-276

Location: NW 1/4 NW 1/4 SEC16 - T9N - R60W 6th PM

Elev KB: 5026.4

Operator 1: M. Webster

Elev DF: 5026.4

Operator 2: C.A. Riney

Elev GL: 5011.4

Comment 1: 5" = 100' TVD GR (api) vs ROP (fph)

Comment 2: Rig: Xtreme Drilg #15

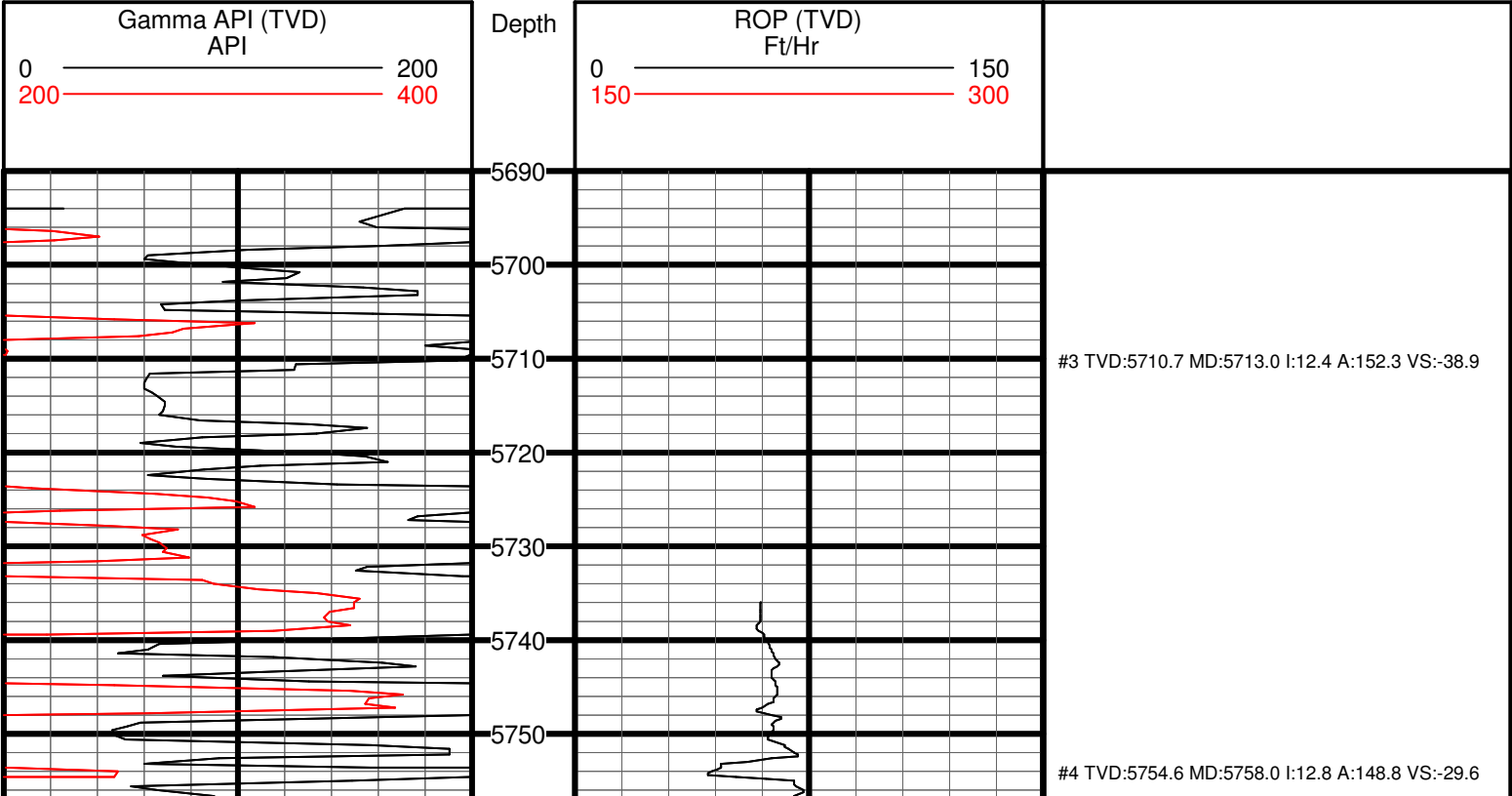
Comment 3: LAT: 40.755031

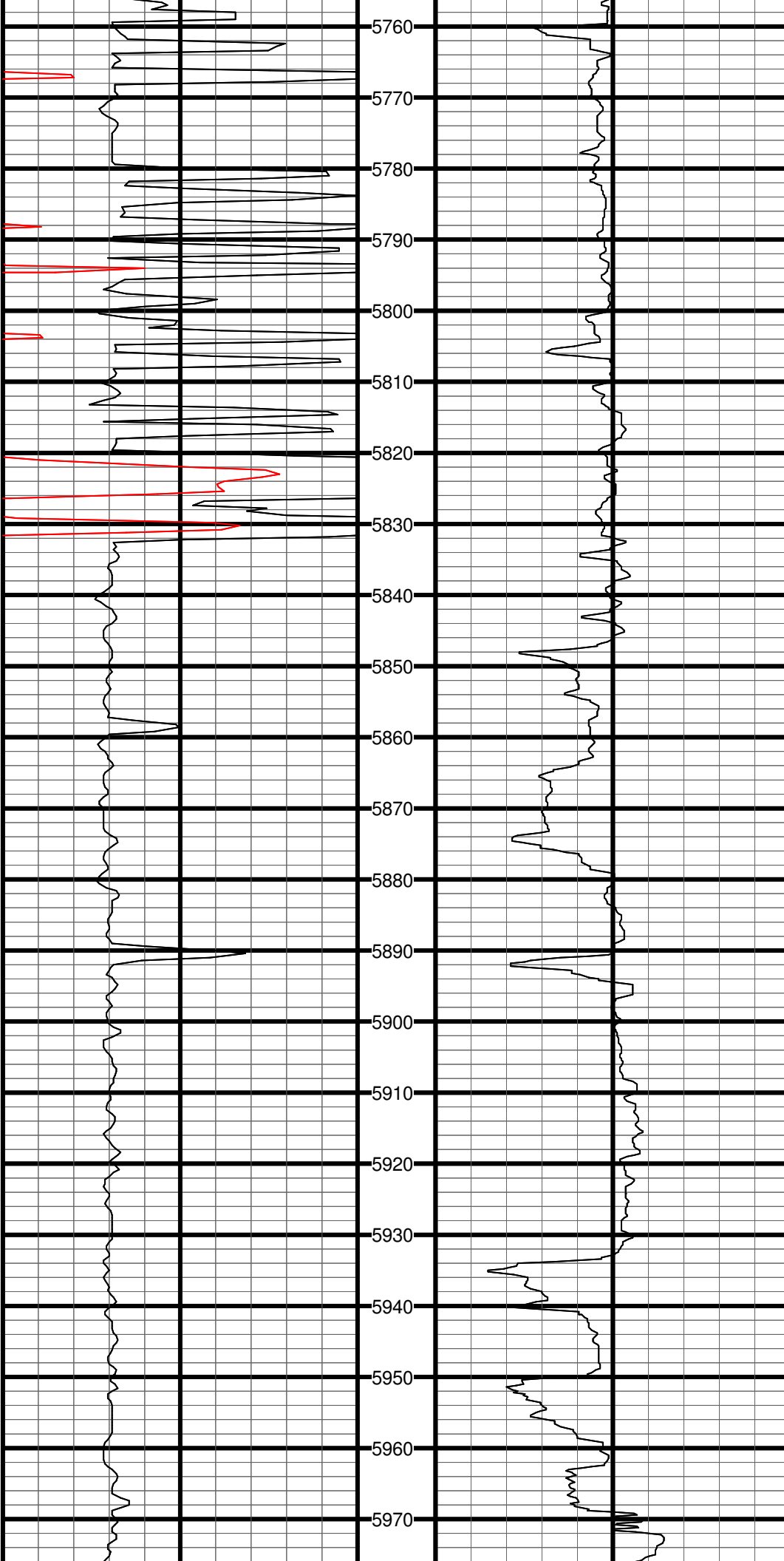
Comment 4: LONG: -104.104749

Comment 5:

Hole Data			Casing Record		
Size	From	To	Size	From	To
17"	Surface	65'	16"	Surface	65'
13"	65'	1400'	9.625"	65'	1400'
9"	1400'	6659'	7"	1400'	6659'
6.125"	6659'	11709'			

Tool Run Data	Run #1	Run #2	Run #3	Run #4	Run #5
Tool S/N	N/A	PGM023	PGM023		
Cal Factor		4.77	3.15		
Gamma Offset		43'	45'		
Start Depth		5696'	6708'		
Start Date		10-23-2010	10-27-2010		
Start Time		18:30	18:30		
End Depth		6708'	11709'		
End Date		10-26-2010	11-6-2010		
End Time		1:30	11:00		





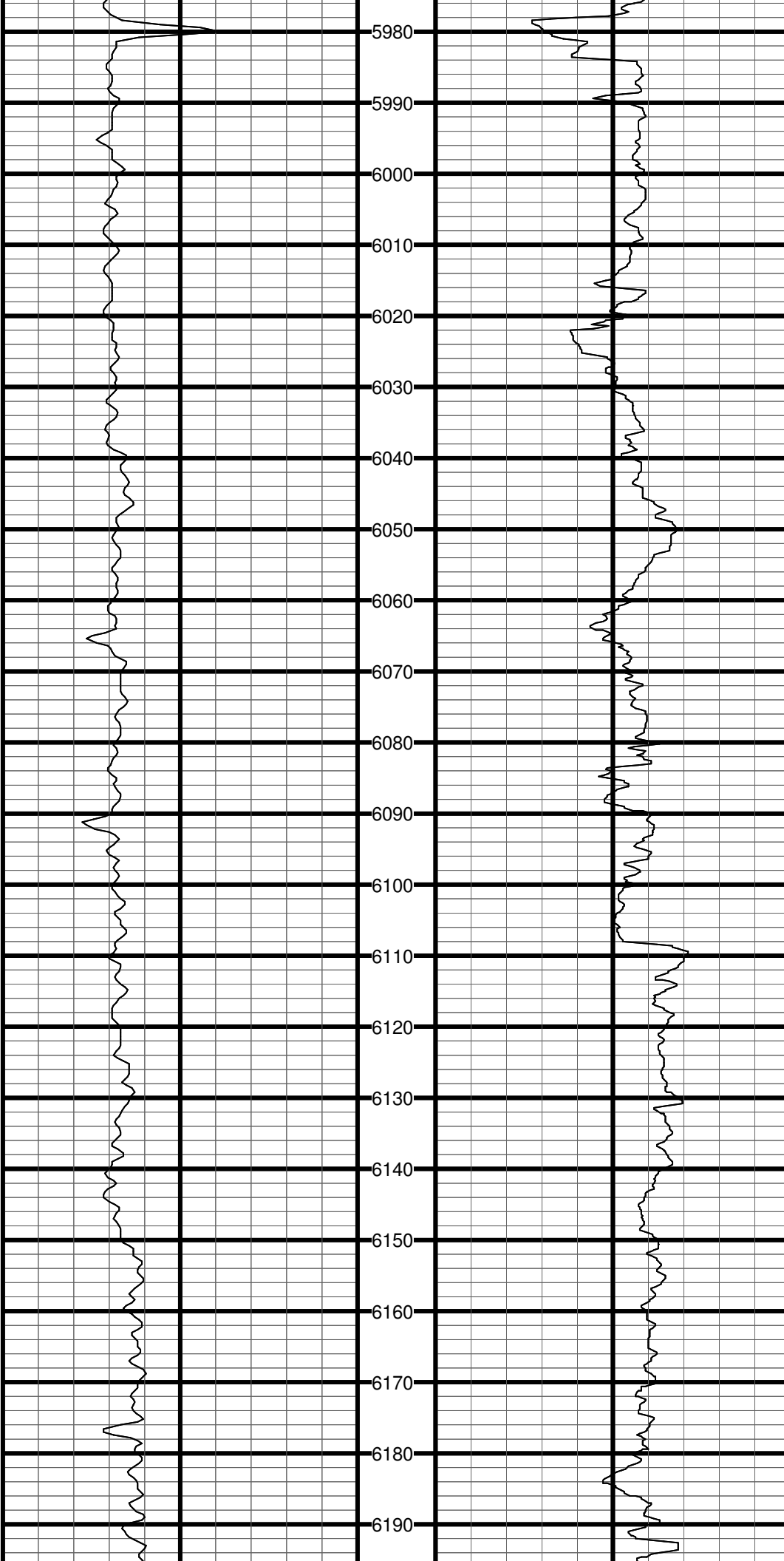
#5 TVD:5797.5 MD:5802.0 I:12.4 A:145.3 VS:-20.3

#6 TVD:5840.5 MD:5846.0 I:12.0 A:143.3 VS:-11.1

#7 TVD:5882.6 MD:5889.0 I:11.7 A:140.9 VS:-2.4

#8 TVD:5926.7 MD:5934.0 I:11.8 A:139.8 VS:6.7

#9 TVD:5970.3 MD:5979.0 I:16.1 A:142.5 VS:17.4



#10 TVD:6011.2 MD:6022.0 I:20.0 A:143.2 VS:30.5

#11 TVD:6052.2 MD:6066.0 I:22.9 A:143.3 VS:46.4

#12 TVD:6093.1 MD:6111.0 I:26.3 A:143.4 VS:64.8

#13 TVD:6131.7 MD:6155.0 I:30.7 A:139.4 VS:85.6

#14 TVD:6168.8 MD:6199.0 I:34.7 A:138.3 VS:109.2

