



Gamma Ray MD

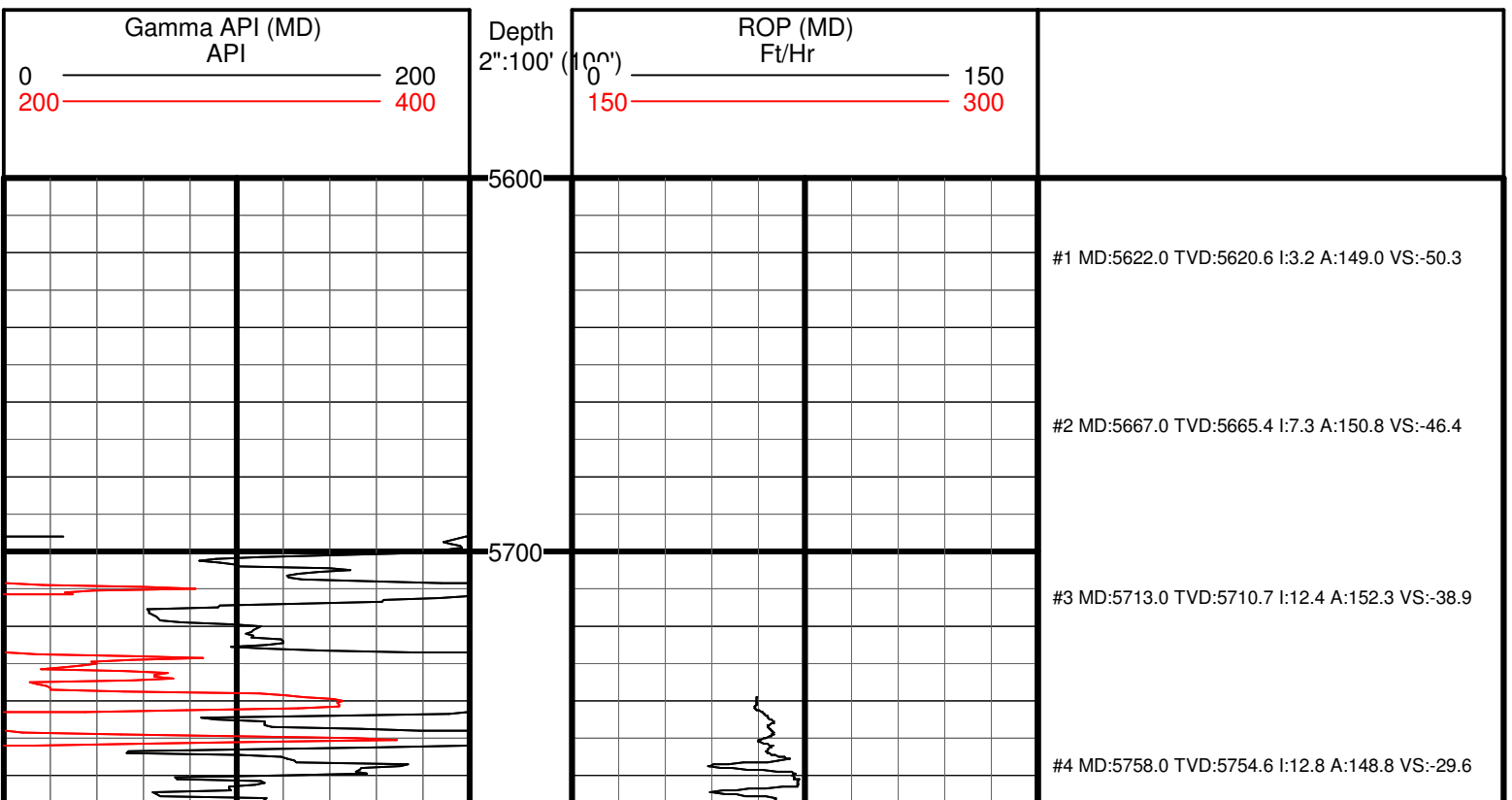
(Scale: 2":100' (100'))

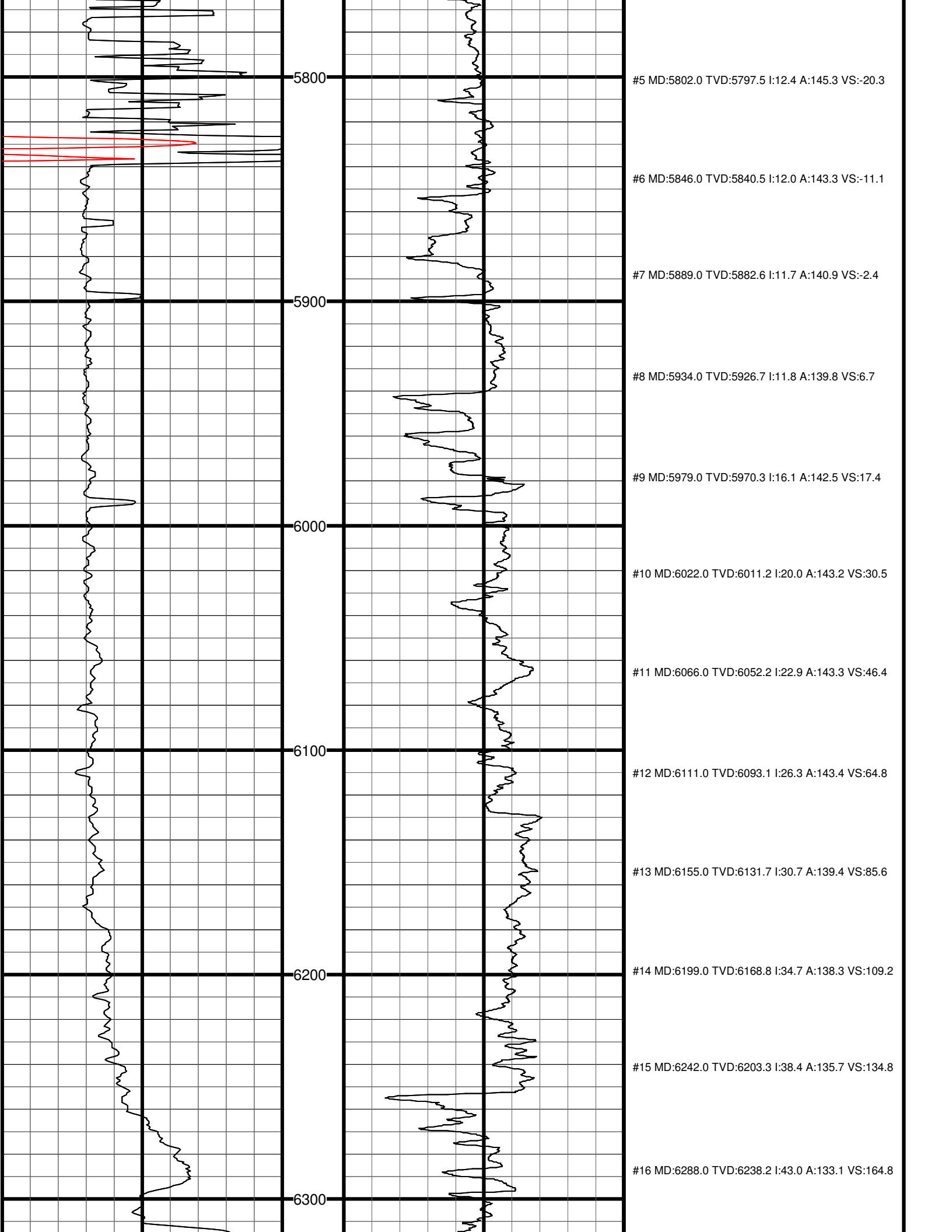
Company: CAFRIZO OIL & GAS, Inc. State: CO
 Well: STATE #16-11-9-60 H County: WELD
 Field: PAWNEE BUTTES Country: USA
 Well ID: 05-123-31642
 Job Number: DR1010080-01-276
 Location: NW 1/4 NW 1/4 SEC 16 - T9N - R60W 6th PM
 Operator 1: M. Webster Elev KB: 5026.4
 Operator 2: C.A. Riney Elev DF: 5026.4
 Elev GL: 5011.4

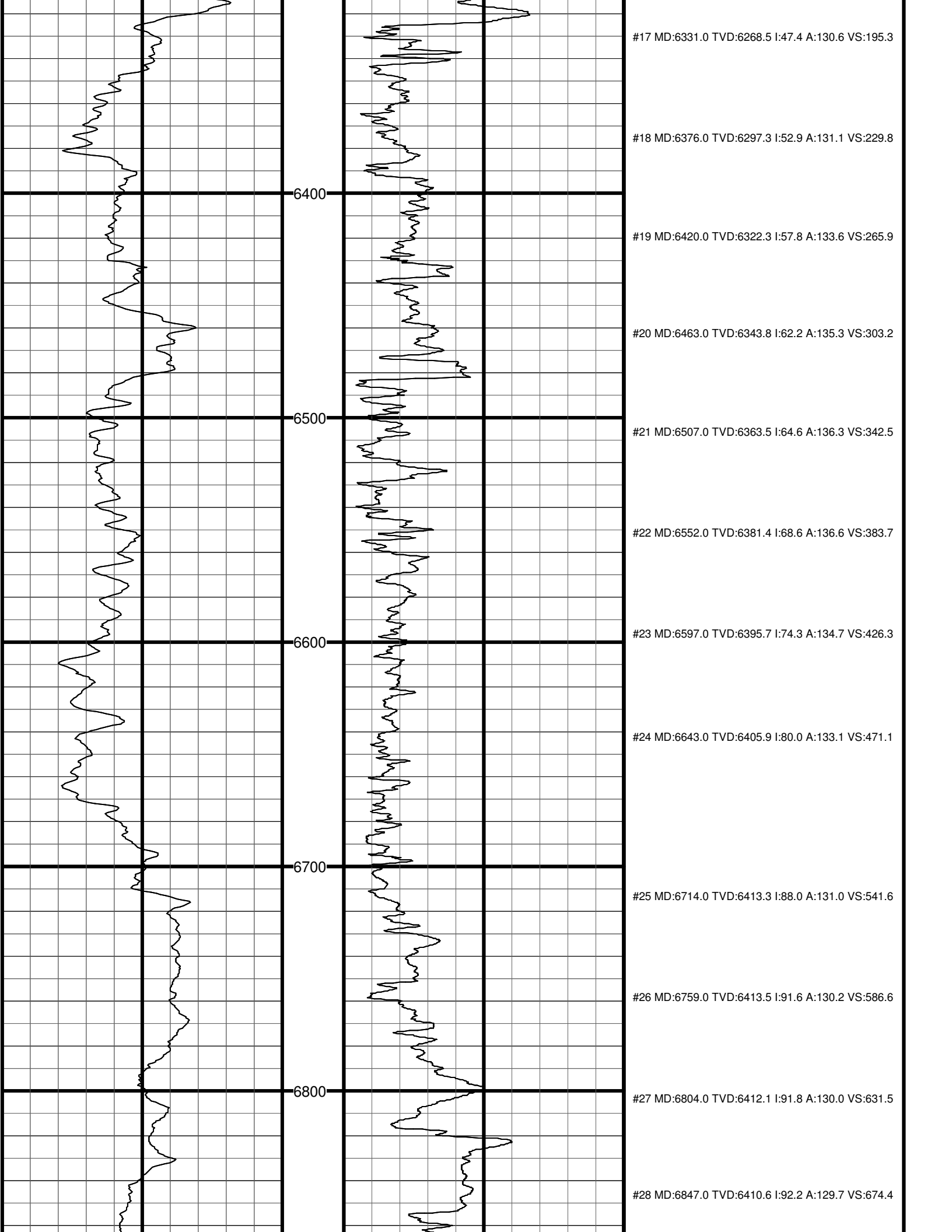
Comment 1: 2" = 100' MD GR (api) vs ROP (fph)
 Comment 2: Rig: Xtreme Drig #15
 Comment 3: LAT: 40.755031
 Comment 4: LONG: -104.104749
 Comment 5:

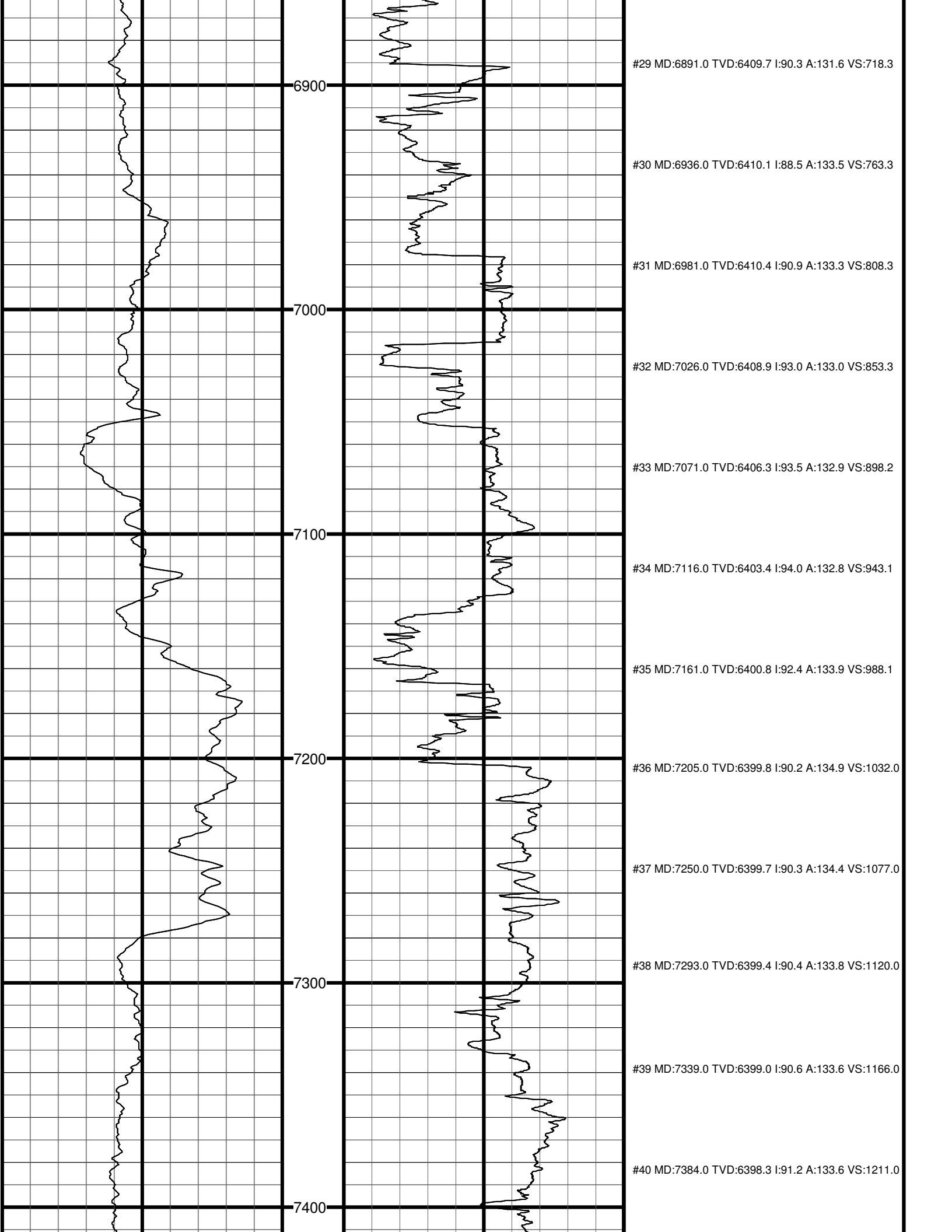
Hole Data			Casing Record		
Size	From	To	Size	From	To
17"	Surface	65'	16"	Surface	65'
13"	65'	1400'	9.625"	65'	1400'
9"	1400'	6659'	7"	1400'	6659'
6.125"	6659'	11709'			

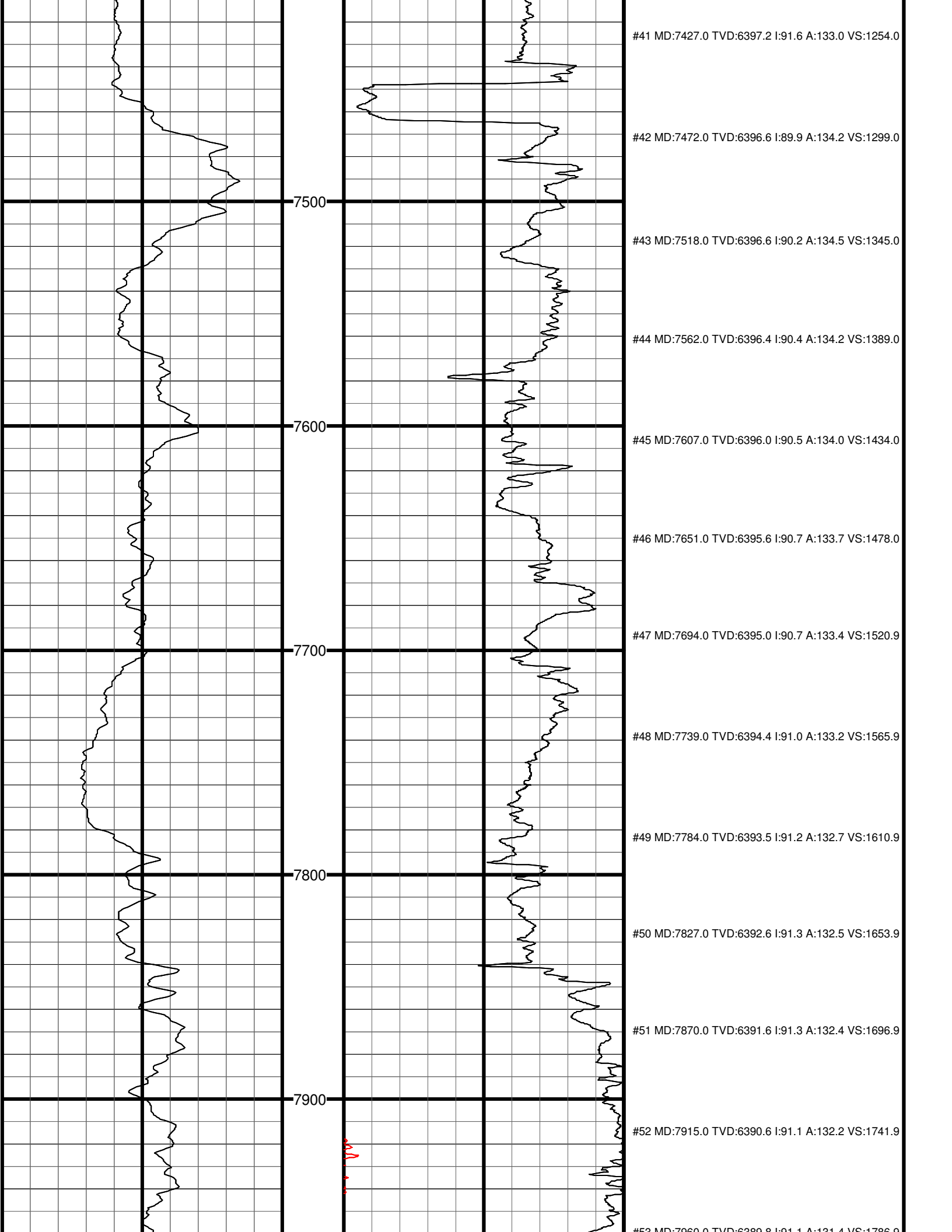
Tool Run Data		Run #1	Run #2	Run #3	Run #4	Run #5
Tool S/N	N/A	PGM023	PGM023			
Cal Factor		4.77	3.15			
Gamma Offset		43'	45'			
Start Depth		5696'	6708'			
Start Date		10-23-2010	10-27-2010			
Start Time		18:30	18:30			
End Depth		6708'	11709'			
End Date		10-26-2010	11-6-2010			
End Time		1:30	11:00			

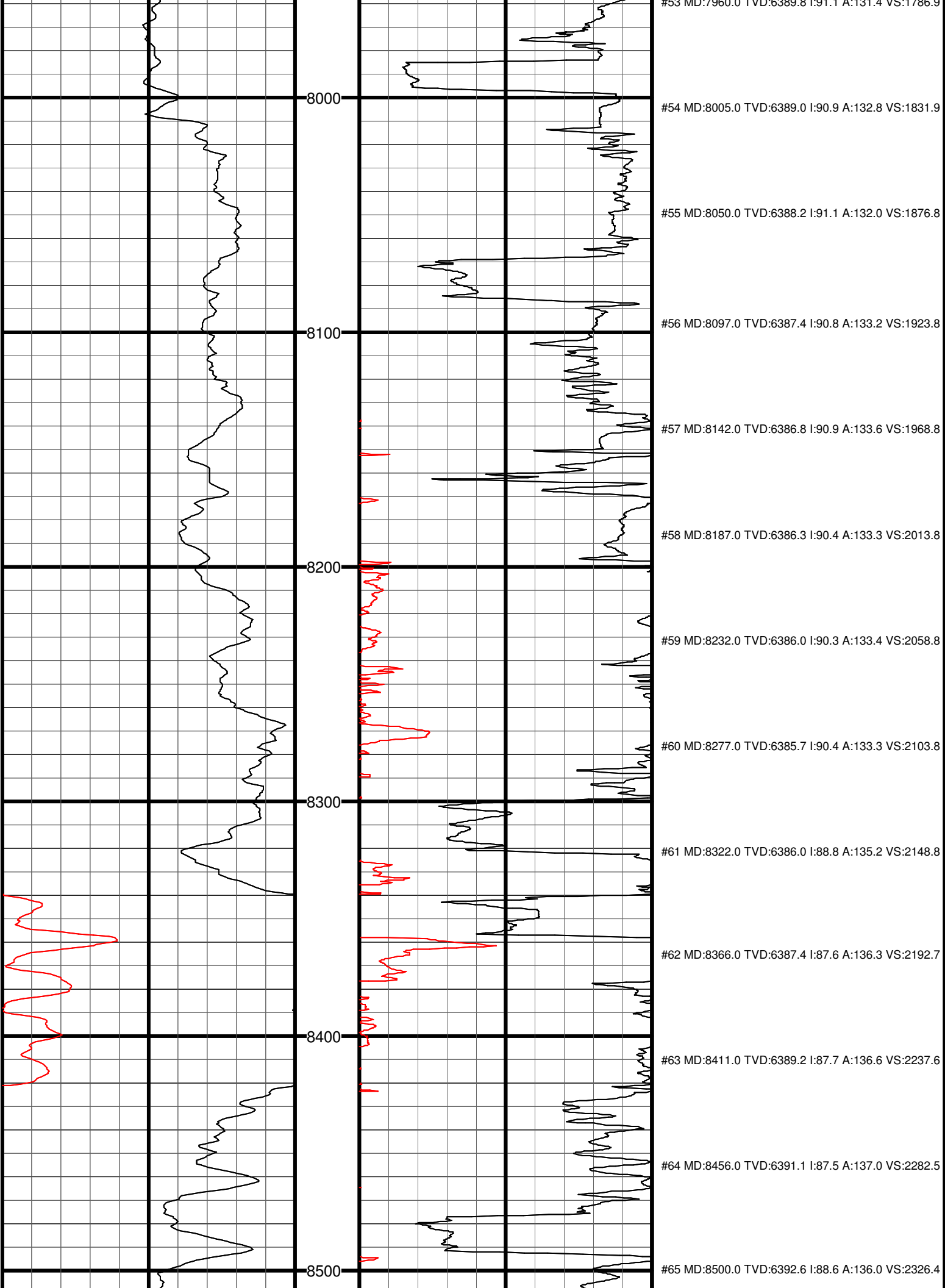


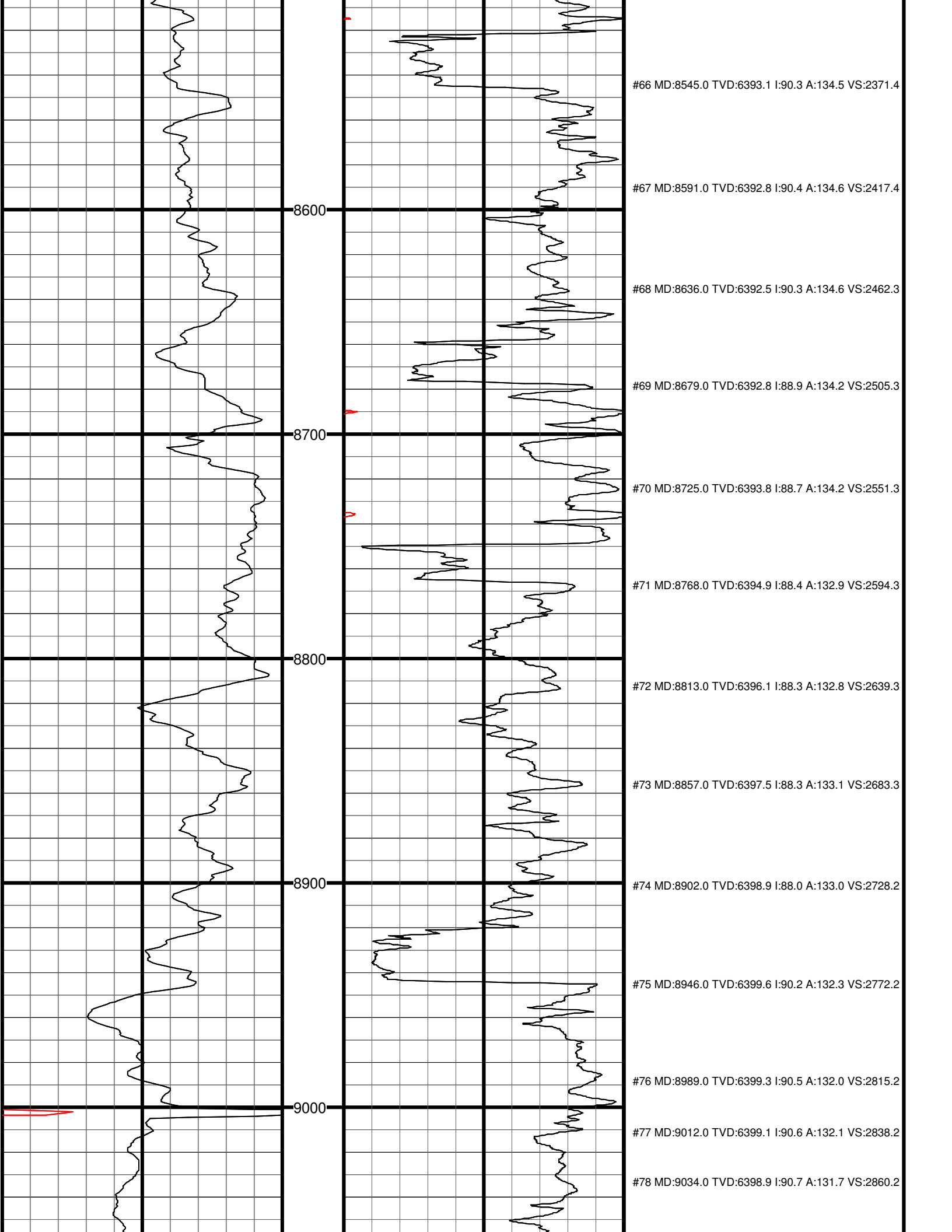


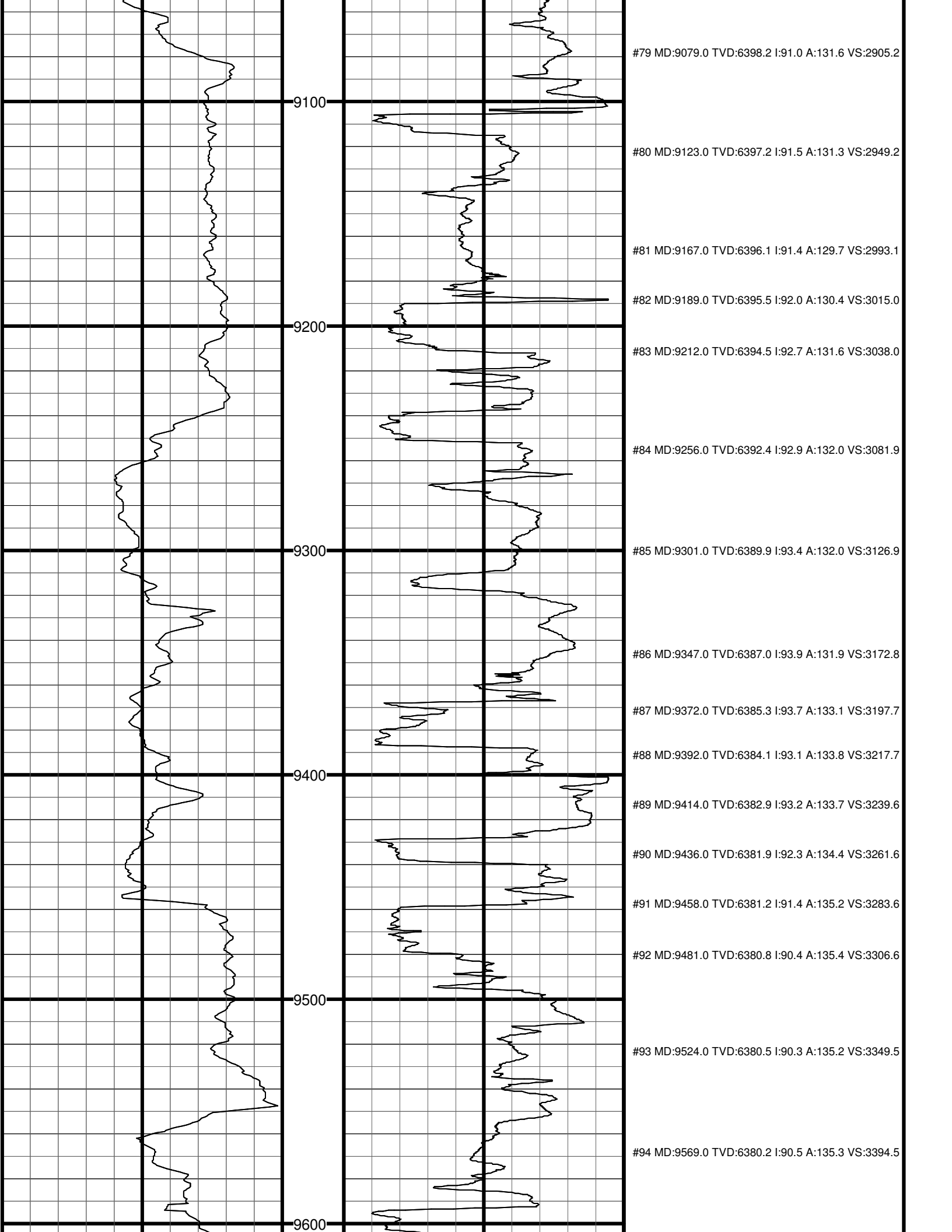












#79 MD:9079.0 TVD:6398.2 I:91.0 A:131.6 VS:2905.2

9100

#80 MD:9123.0 TVD:6397.2 I:91.5 A:131.3 VS:2949.2

#81 MD:9167.0 TVD:6396.1 I:91.4 A:129.7 VS:2993.1

#82 MD:9189.0 TVD:6395.5 I:92.0 A:130.4 VS:3015.0

9200

#83 MD:9212.0 TVD:6394.5 I:92.7 A:131.6 VS:3038.0

#84 MD:9256.0 TVD:6392.4 I:92.9 A:132.0 VS:3081.9

9300

#85 MD:9301.0 TVD:6389.9 I:93.4 A:132.0 VS:3126.9

#86 MD:9347.0 TVD:6387.0 I:93.9 A:131.9 VS:3172.8

#87 MD:9372.0 TVD:6385.3 I:93.7 A:133.1 VS:3197.7

#88 MD:9392.0 TVD:6384.1 I:93.1 A:133.8 VS:3217.7

9400

#89 MD:9414.0 TVD:6382.9 I:93.2 A:133.7 VS:3239.6

#90 MD:9436.0 TVD:6381.9 I:92.3 A:134.4 VS:3261.6

#91 MD:9458.0 TVD:6381.2 I:91.4 A:135.2 VS:3283.6

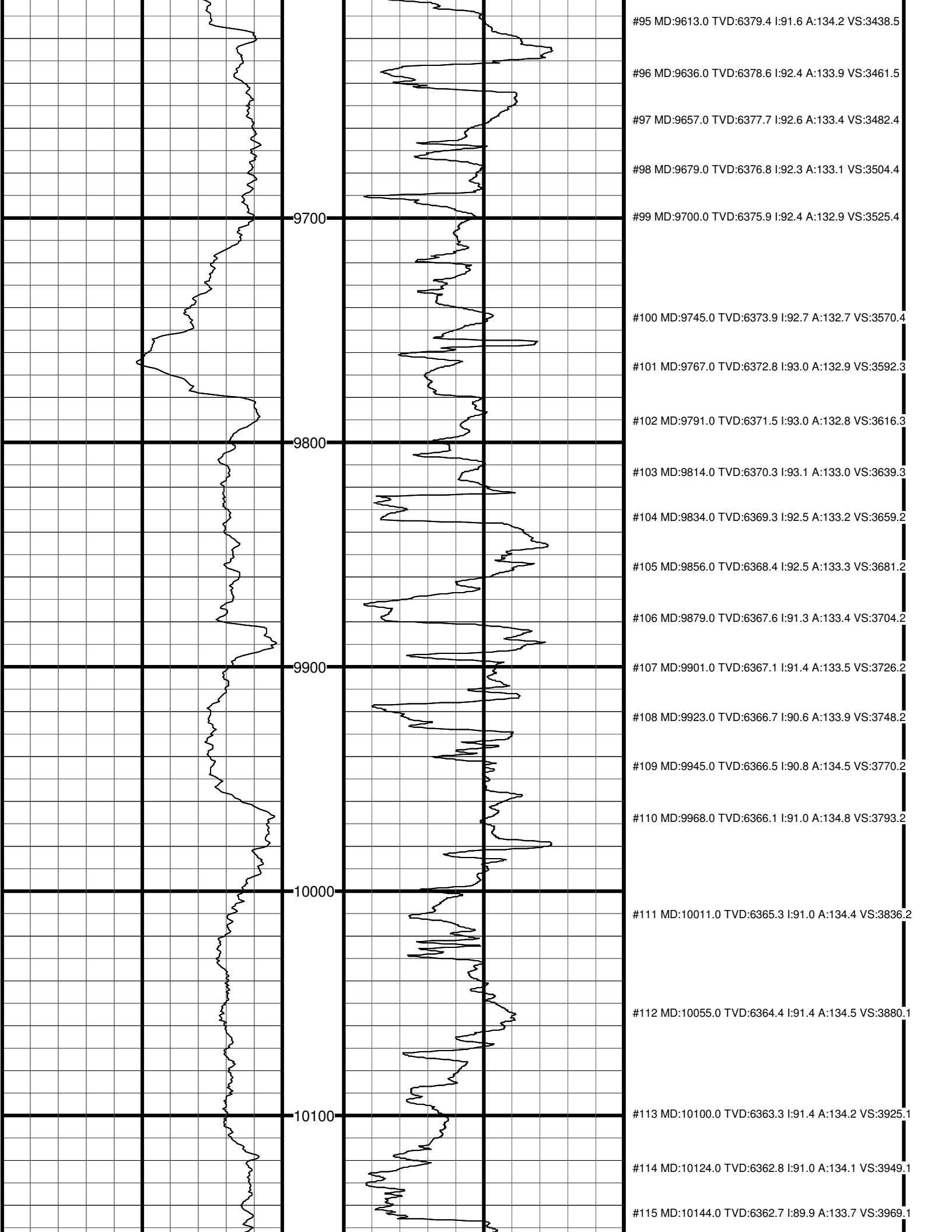
#92 MD:9481.0 TVD:6380.8 I:90.4 A:135.4 VS:3306.6

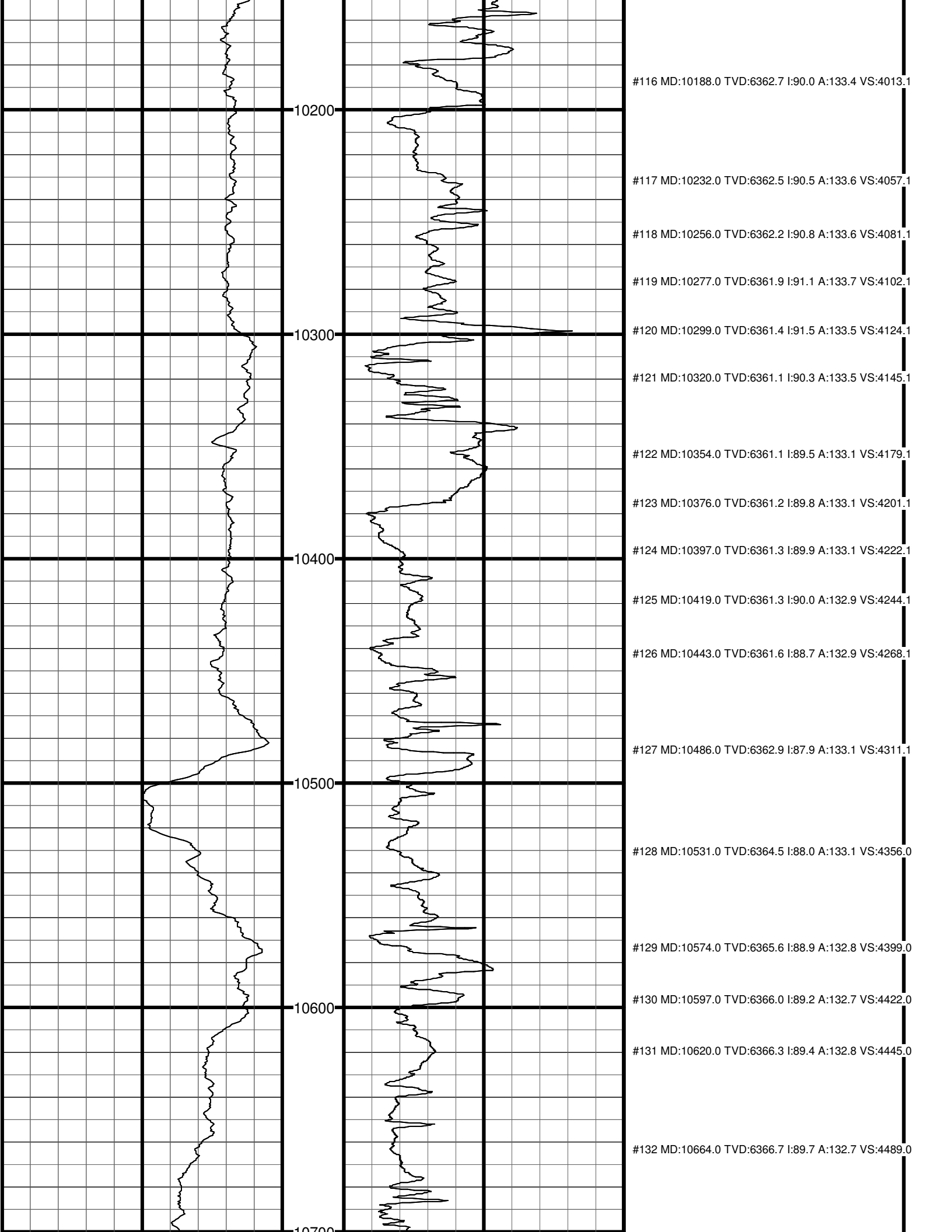
9500

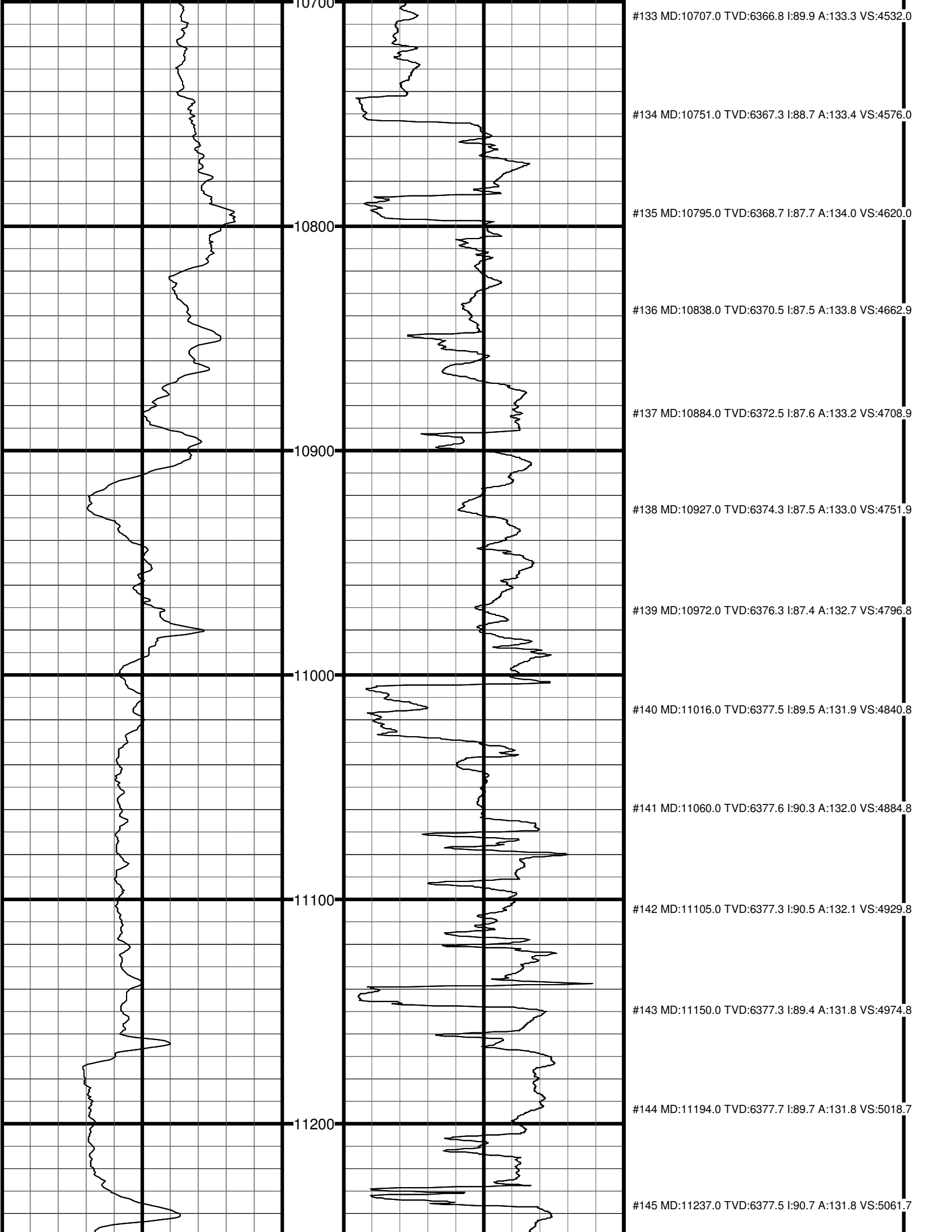
#93 MD:9524.0 TVD:6380.5 I:90.3 A:135.2 VS:3349.5

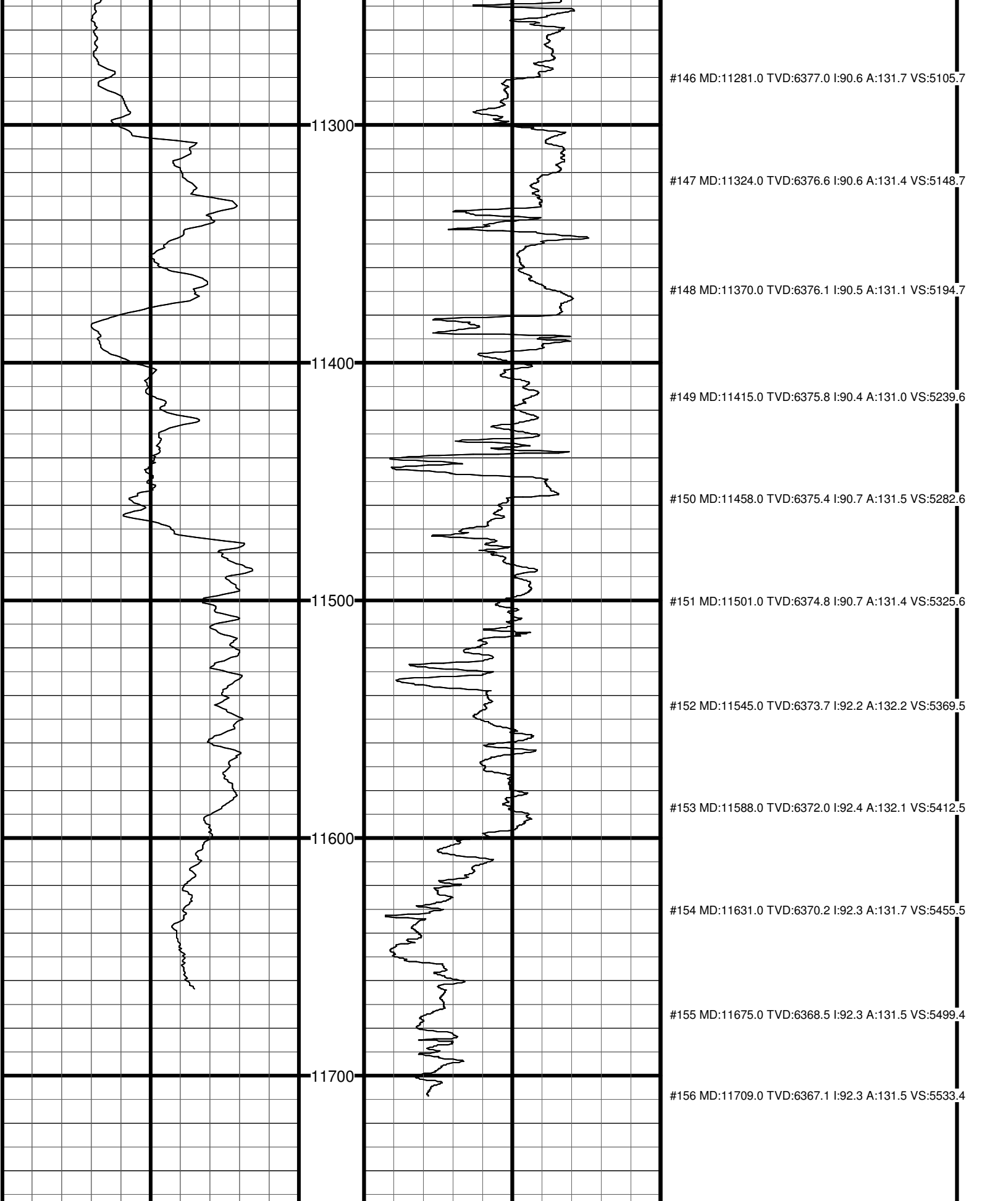
#94 MD:9569.0 TVD:6380.2 I:90.5 A:135.3 VS:3394.5

9600









Gamma API (MD)
API

0 ————— 200
200 ————— 400

Depth
2":100' (10")

ROP (MD)
Ft/Hr

0 ————— 150
150 ————— 300