



Orlando Hill 26-44-8-61 TVD

(Scale: 5" = 100' (10"))

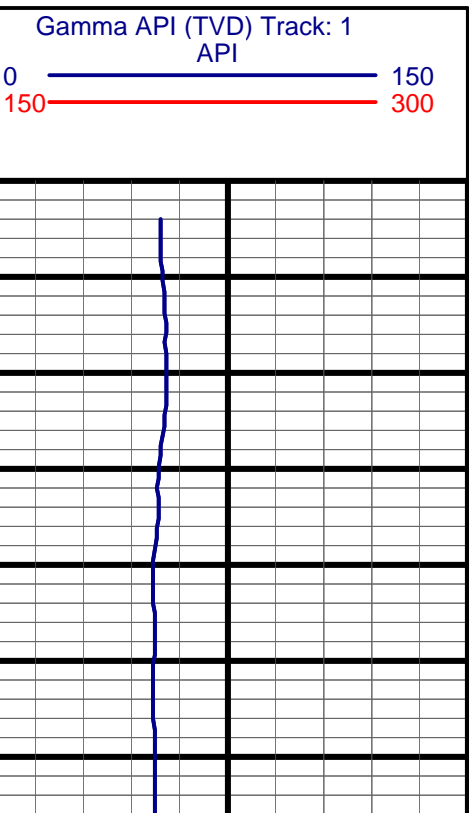
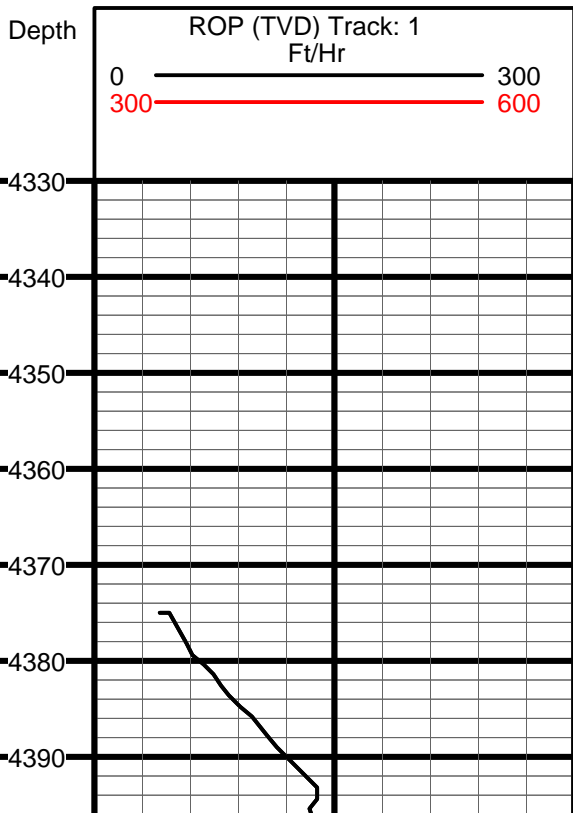
Company: Carrizo Oil Gas
 Well: Orlando Hill 26-44-8-61
 Field: Niobrara
 Well ID: 05-123-32317
 Job Number: DDOK-110205

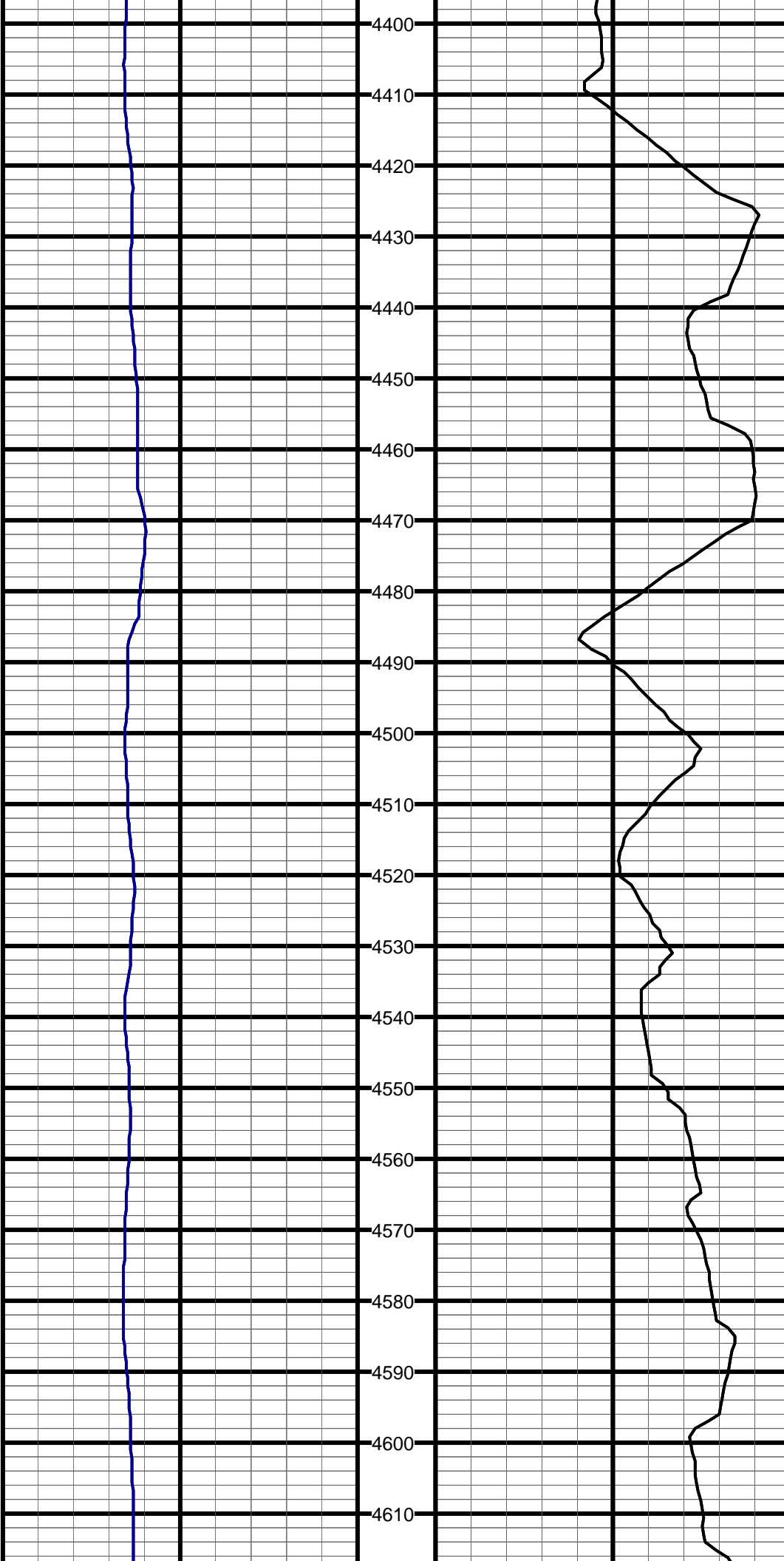
State: Co.
 County: Weld
 Country: USA
 Elev KB: 4996'
 Elev DF: 4996'
 Elev GL: 4982'

Location: Briggsdale
 Operator 1: M. Valentine
 Operator 2: F. Zitikovic
 Comment 1: Log 40° 37' 39.7423N
 Comment 2: Lat 104° 10' 1.702 W
 Comment 3:
 Comment 4:
 Comment 5:

Hole Data			Casing Record		
Size	From	To	Size	From	To
12 1/4"	0'	1410'	9 5/8"	0'	1410'
8 3/4"	1410'	6798'	7"	1410'	6798'
6 1/8"	6798'	10192'	4 1/2"	6798'	10192'

Tool Run Data		Run #1	Run #2	Run #3	Run #4	Run #5
Tool S/N	614	887	614			
Cal Factor	4	4	2			
Gamma Offset	41'	42'	47'			
Start Depth	4321'	6234'	6798'			
Start Date	5/11/11	5/22/11	5/29/11			
Start Time	10:45	3:30	10:00			
End Depth	6234'	6798'	10192'			
End Date	5/14/11	5/28/11	6/4/11			
End Time	7:30	4:30	9:45			



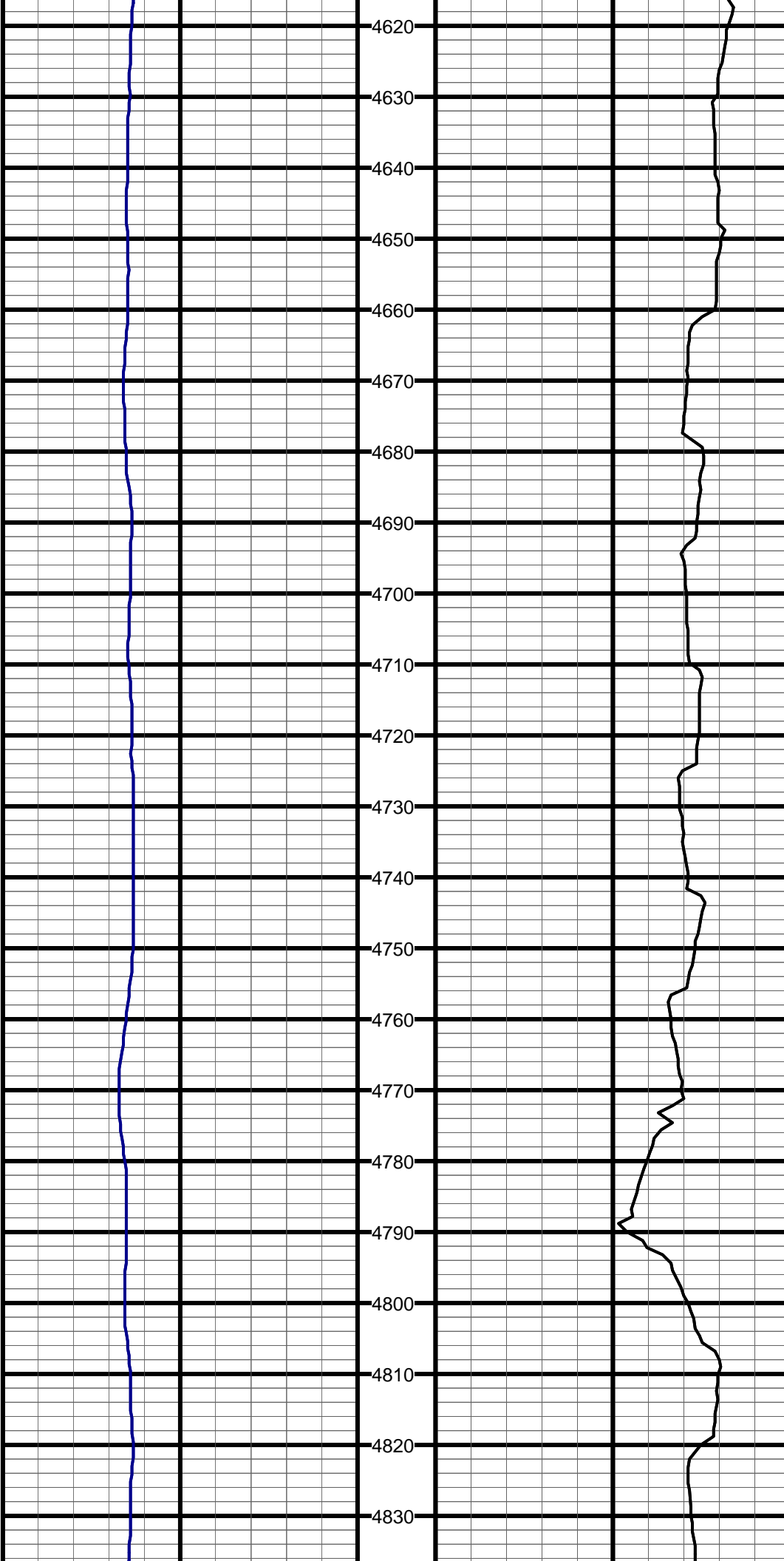


4400
4410
4420
4430
4440
4450
4460
4470
4480
4490
4500
4510
4520
4530
4540
4550
4560
4570
4580
4590
4600
4610

#2 TVD:4415.7 MD:4416.0 I:0.8 A:191.4 VS:3.5

#3 TVD:4510.7 MD:4511.0 I:1.1 A:158.9 VS:2.0

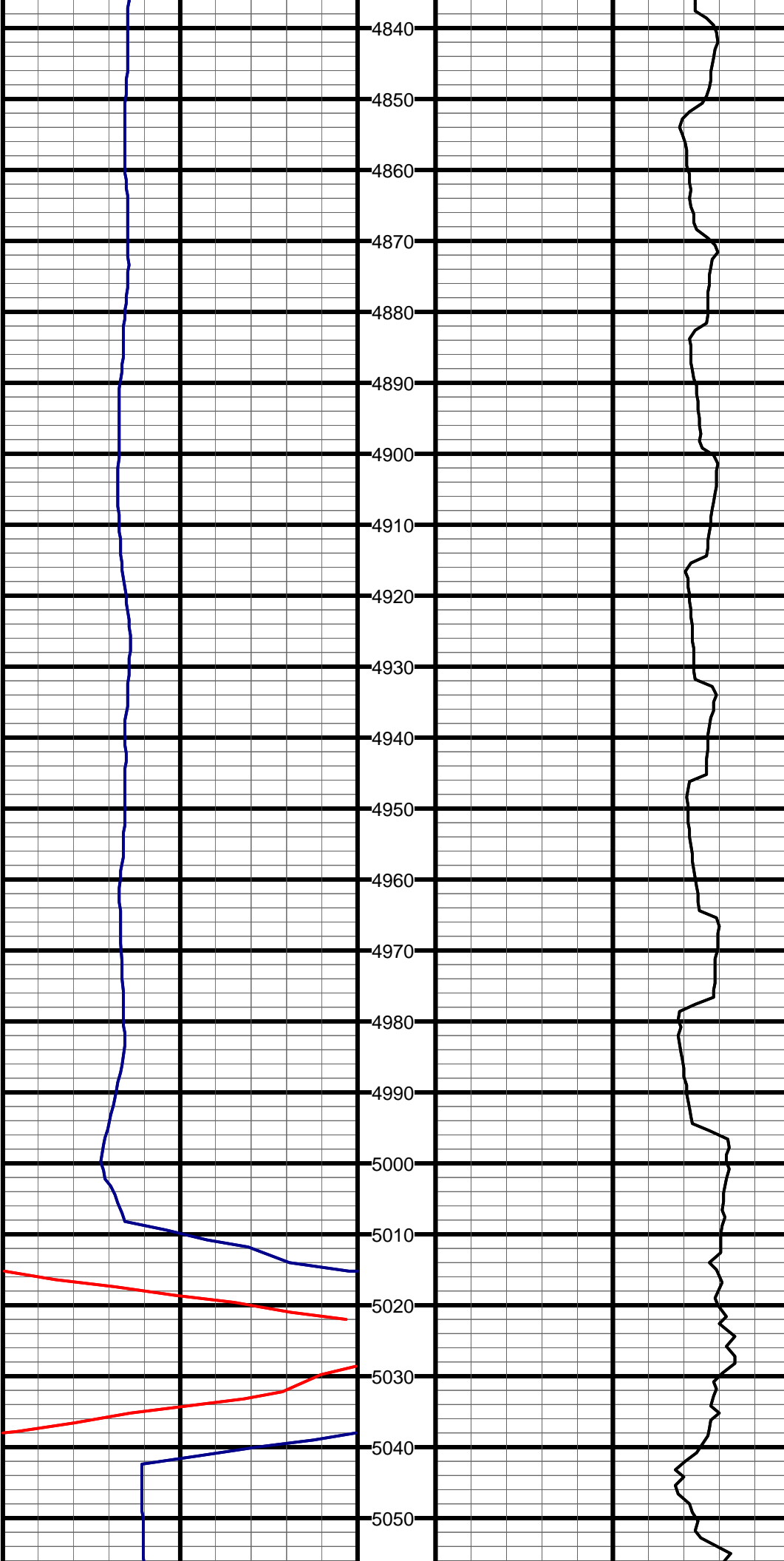
#4 TVD:4605.7 MD:4606.0 I:1.1 A:171.4 VS:0.3



4620
4630
4640
4650
4660
4670
4680
4690
4700
4710
4720
4730
4740
4750
4760
4770
4780
4790
4800
4810
4820
4830

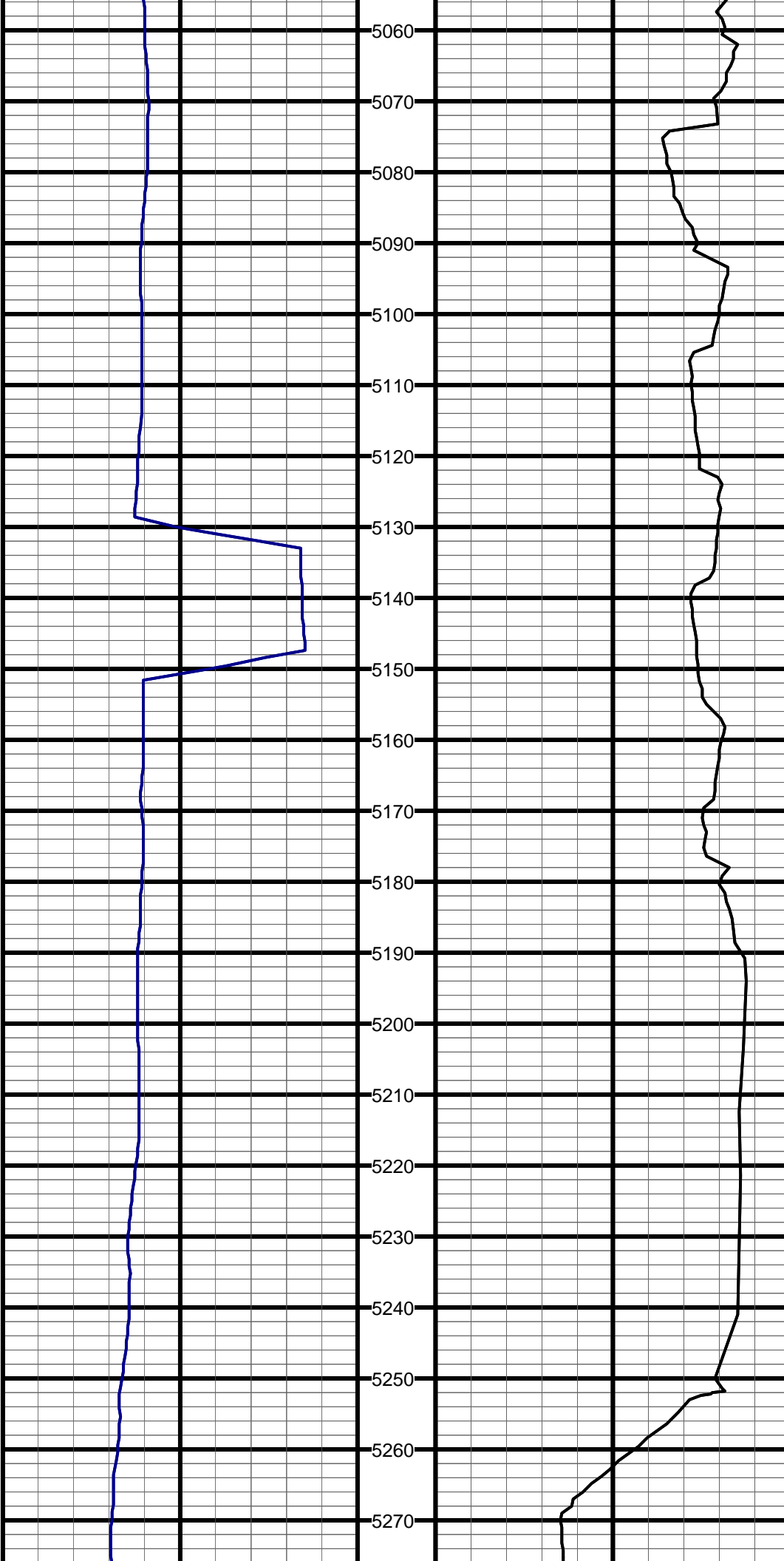
#5 TVD:4700.7 MD:4701.0 I:1.2 A:156.4 VS:-1.5

#6 TVD:4796.6 MD:4797.0 I:2.0 A:161.1 VS:-3.9



#7 TVD:4891.6 MD:4892.0 I:1.6 A:148.6 VS:-6.5

#8 TVD:4986.6 MD:4987.0 I:1.0 A:138.4 VS:-8.1

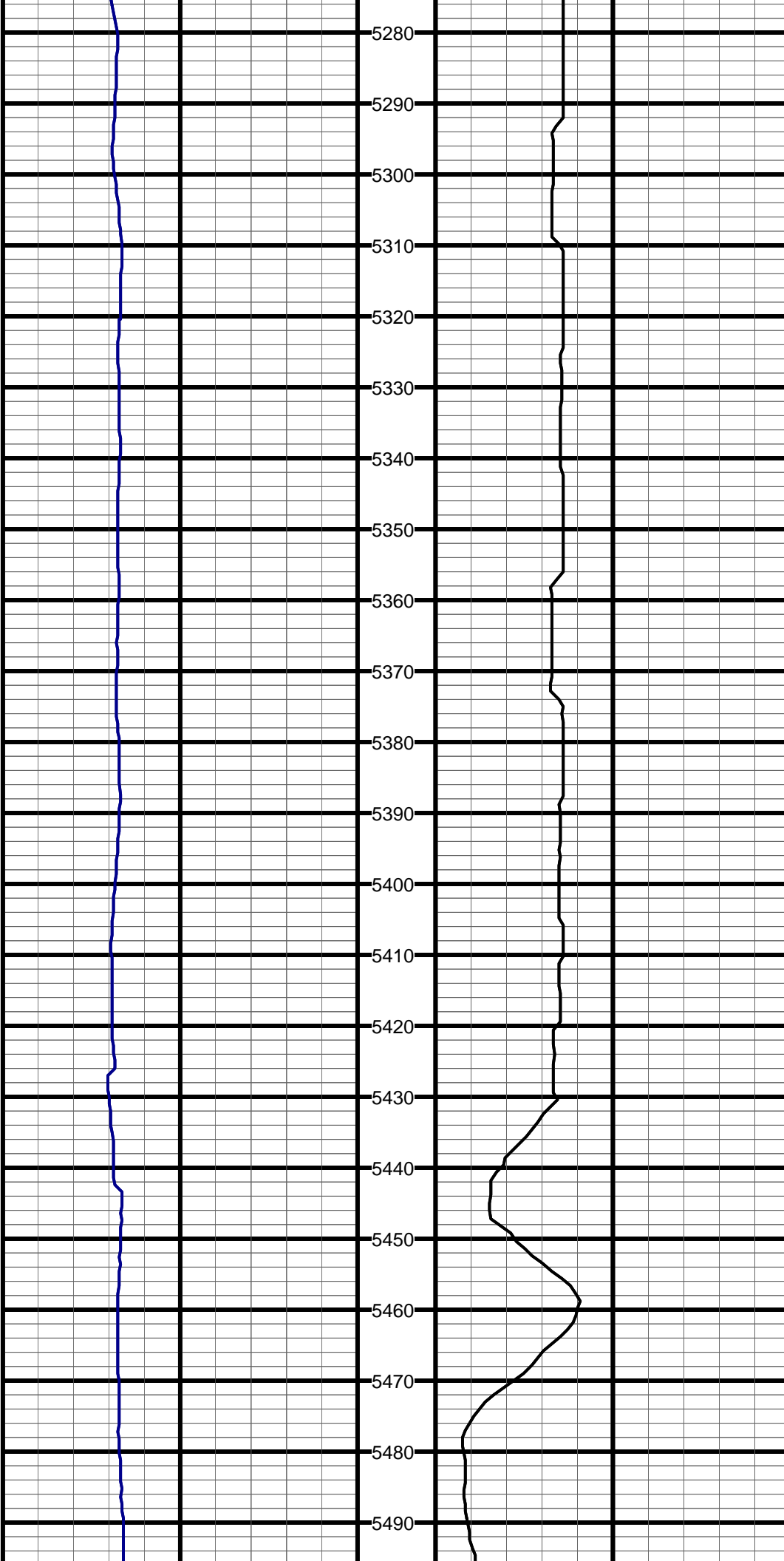


5060
5070
5080
5090
5100
5110
5120
5130
5140
5150
5160
5170
5180
5190
5200
5210
5220
5230
5240
5250
5260
5270

#9 TVD:5081.6 MD:5082.0 I:0.8 A:120.4 VS:-8.9

#10 TVD:5176.5 MD:5177.0 I:0.7 A:106.8 VS:-9.3

#11 TVD:5271.5 MD:5272.0 I:0.8 A:123.5 VS:-9.8

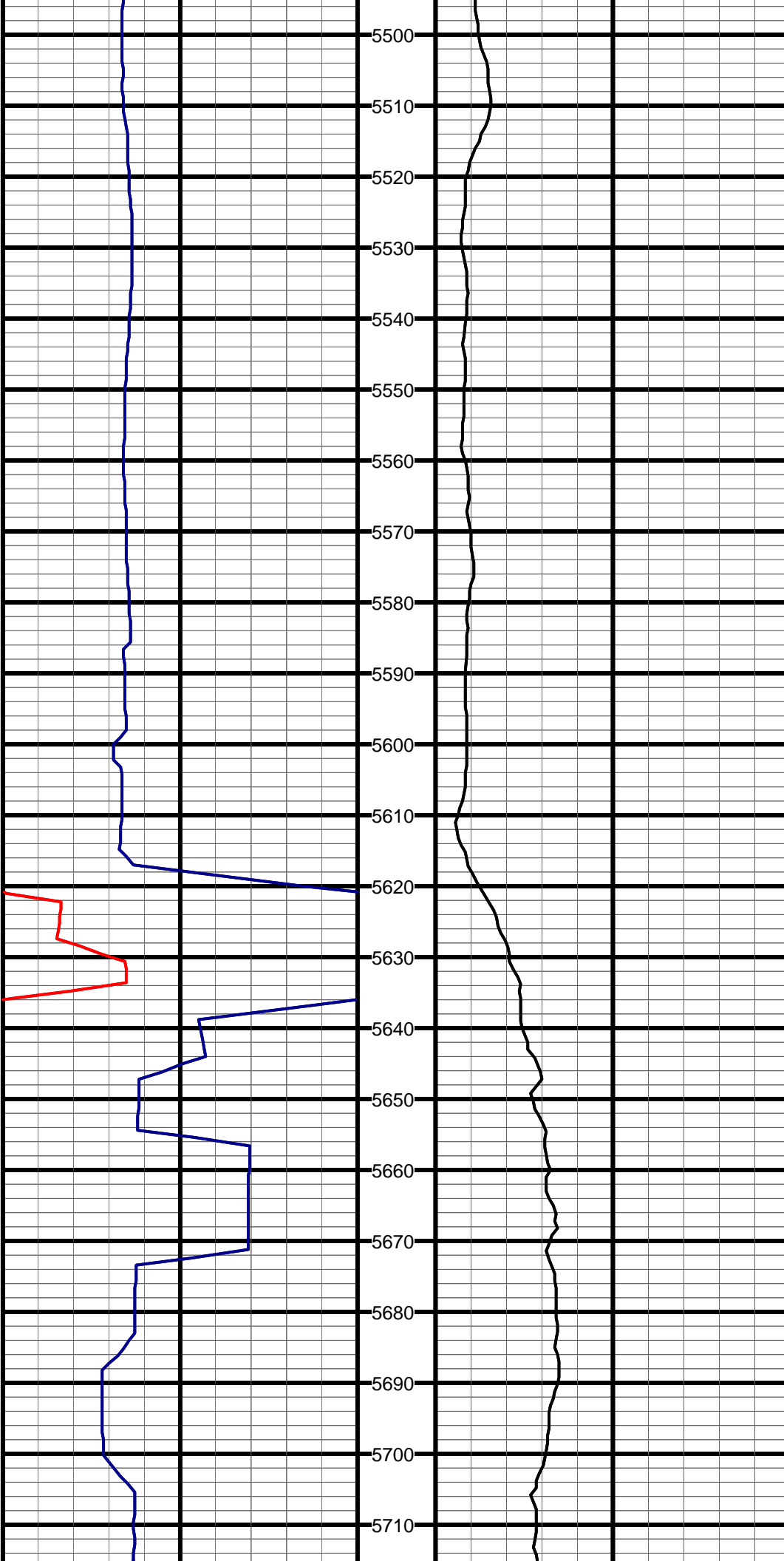


5280
5290
5300
5310
5320
5330
5340
5350
5360
5370
5380
5390
5400
5410
5420
5430
5440
5450
5460
5470
5480
5490

#12 TVD:5366.5 MD:5367.0 I:1.5 A:118.8 VS:-10.6

#13 TVD:5422.5 MD:5423.0 I:1.4 A:53.6 VS:-10.4

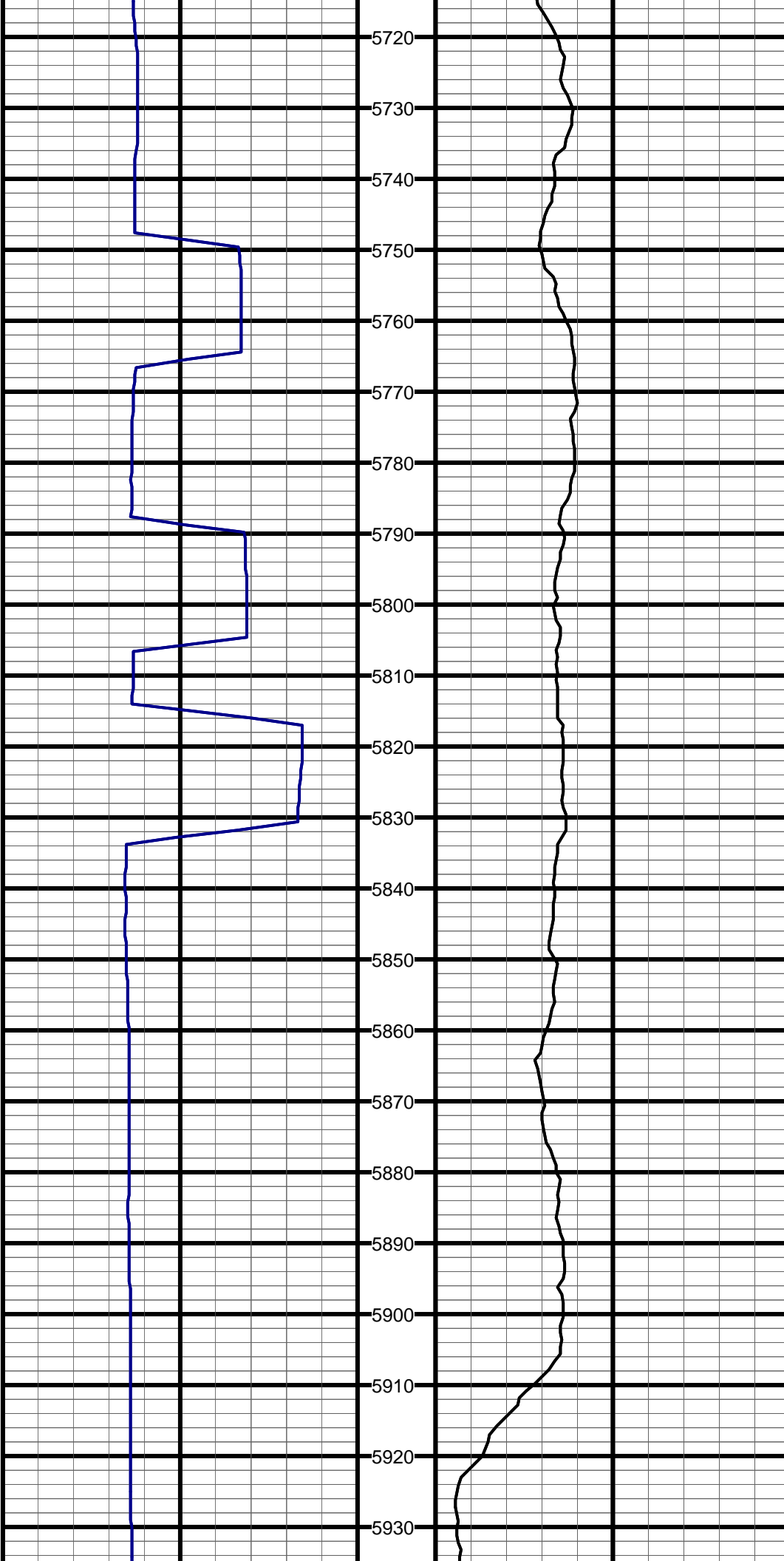
#14 TVD:5454.5 MD:5455.0 I:1.5 A:42.4 VS:-9.8



5500
5510
5520
5530
5540
5550
5560
5570
5580
5590
5600
5610
5620
5630
5640
5650
5660
5670
5680
5690
5700
5710

#15 TVD:5549.4 MD:5550.0 I:2.7 A:30.2 VS:-6.8

#16 TVD:5644.3 MD:5645.0 I:2.8 A:32.0 VS:-2.7



#17 TVD:5739.2 MD:5740.0 I:2.3 A:36.3 VS:1.0

#18 TVD:5834.2 MD:5835.0 I:2.0 A:39.8 VS:4.0

#19 TVD:5866.1 MD:5867.0 I:2.1 A:38.4 VS:4.9

#20 TVD:5898.1 MD:5899.0 I:2.3 A:42.2 VS:5.9

#21 TVD:5929.1 MD:5930.0 I:4.2 A:22.7 VS:7.5

