



Orlando Hill 26-44-8-61 MD

(Scale: 2" = 100' (100'))

Company: Carrizo Oil & Gas
 Well: Orlando Hill 26-44-8-61
 Field: Wildcat
 Well ID: 05-123-32317
 Job Number: DDOK-110205

State: Co.
 County: Weld
 Country: USA
 Elev KB: 4996'
 Elev DF: 4996'
 Elev GL: 4982'

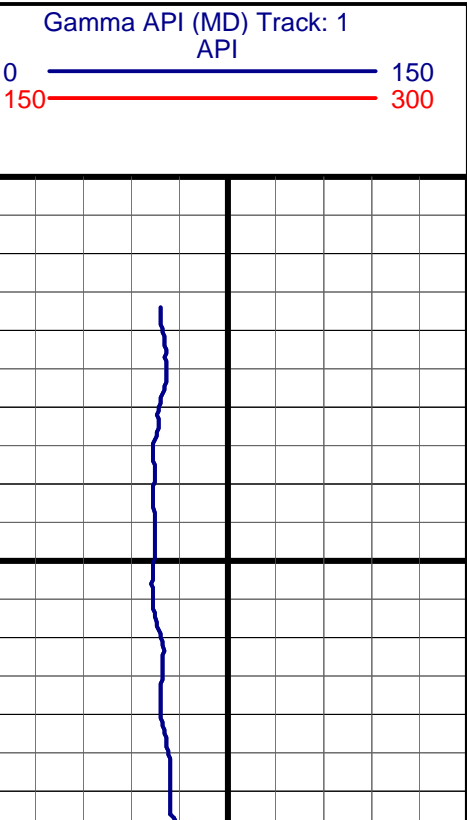
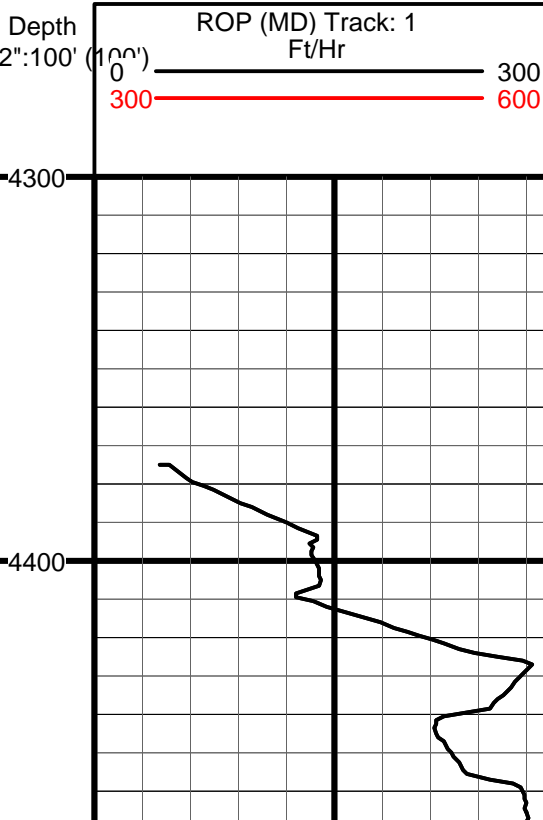
Comment 1: Lat 40° 37' 39.7423 N
 Comment 2: Log 104° 10' 1.702 W
 Comment 3:
 Comment 4:
 Comment 5:

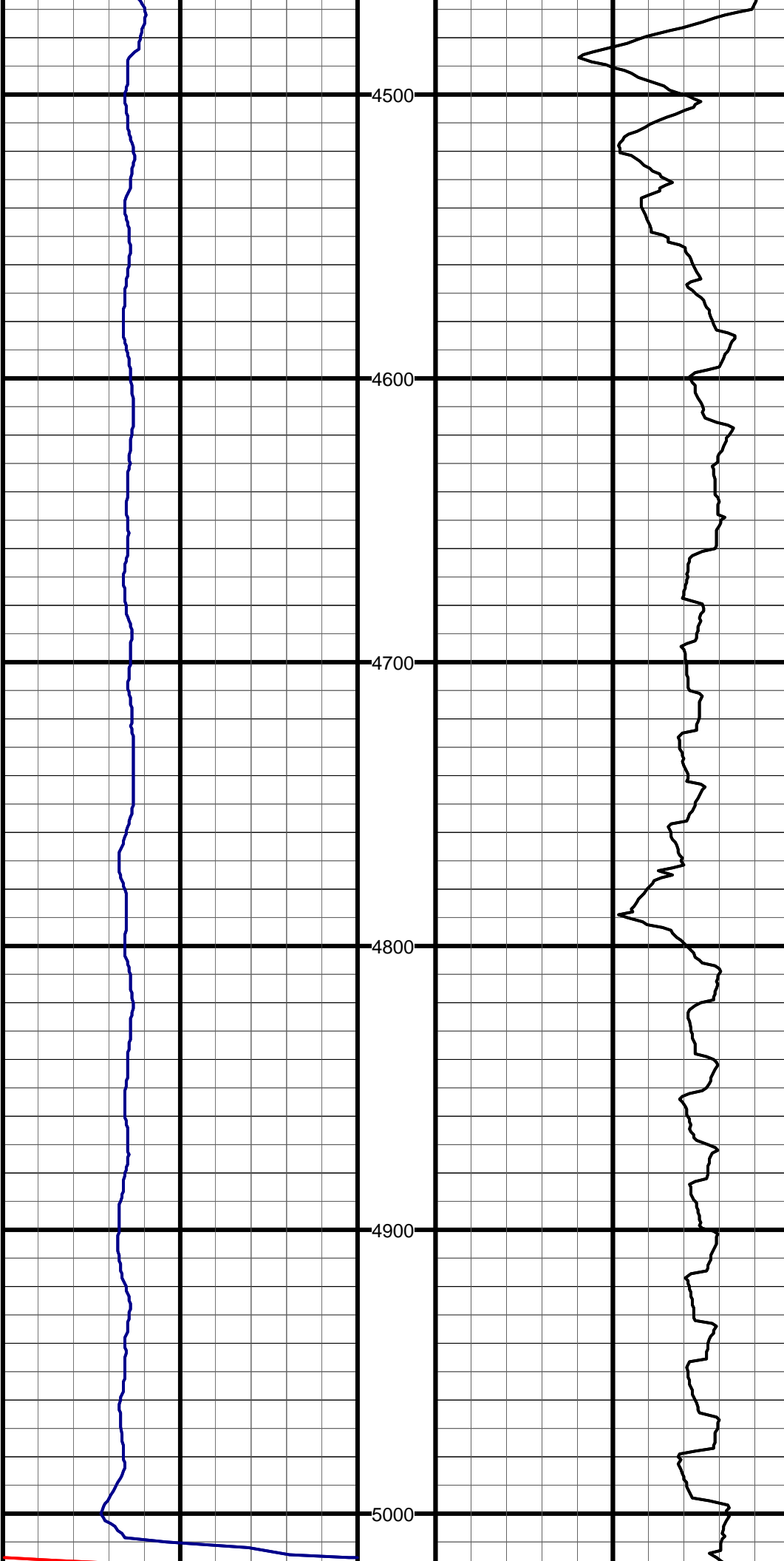
Hole Data			Casing Record		
Size	From	To	Size	From	To
12 1/4"	0'	1410'	9 5/8"	0'	1410'
8 3/4"	1410'	6798'	7"	1410'	6798'
6 1/8"	6798'	10192'	4 1/2"	6798'	10192'

Tool Run Data		Run #1	Run #2	Run #3	Run #4	Run #5
Tool S/N	614	887	614			
Cal Factor	4	4	2			
Gamma Offset	41	42	47			
Start Depth	4321'	6234'	6798'			
Start Date	5/11/11	5/22/11	5/29/11			
Start Time	10:45	3:30	10:00			
End Depth	6234'	6798'	10192'			
End Date	5/14/11	5/28/11	6/4/11			
End Time	7:30	4:30	9:45			

#1 MD:4321.0 TVD:4320.7 I:0.7 A:164.4 VS:4.7

#2 MD:4416.0 TVD:4415.7 I:0.8 A:191.4 VS:3.5





#3 MD:4511.0 TVD:4510.7 I:1.1 A:158.9 VS:2.0

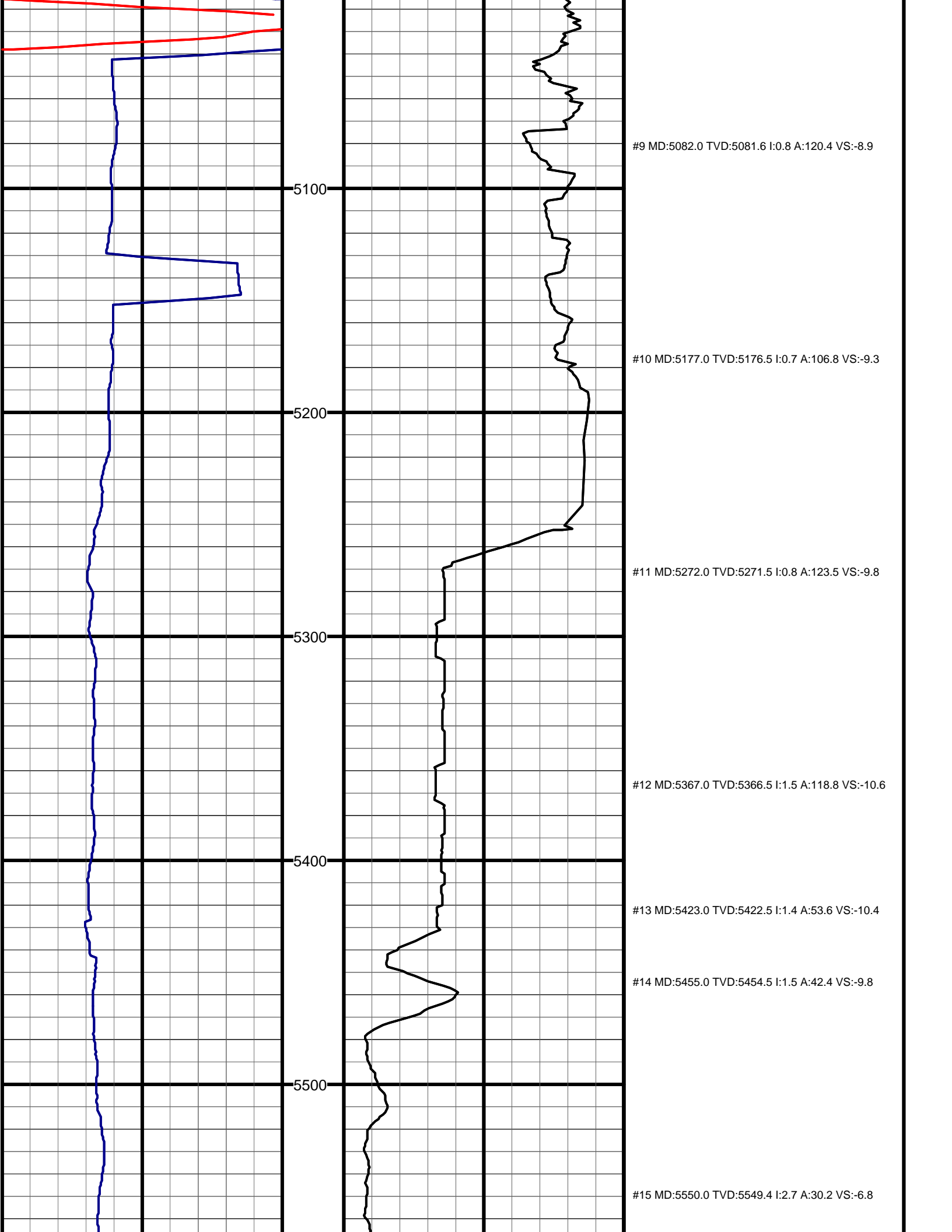
#4 MD:4606.0 TVD:4605.7 I:1.1 A:171.4 VS:0.3

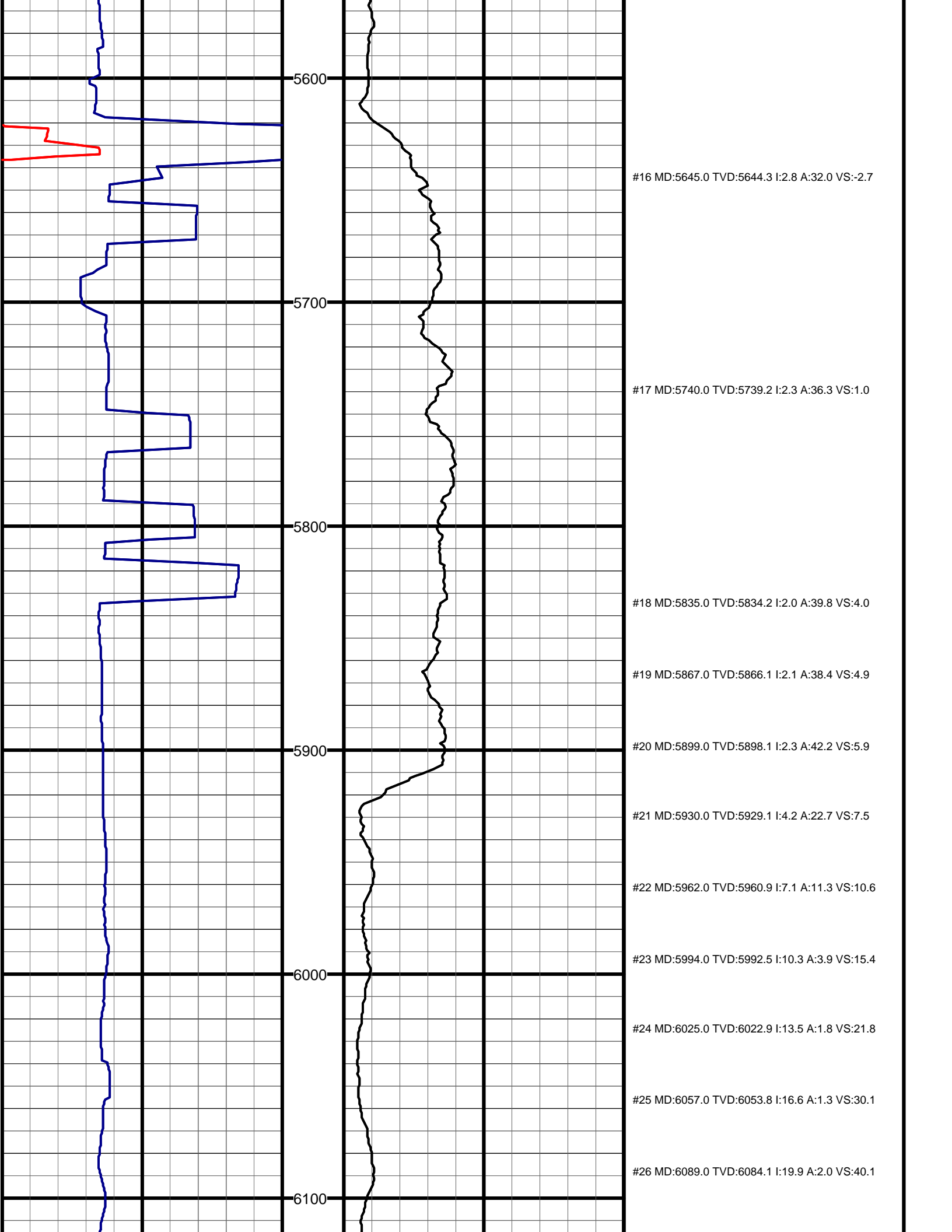
#5 MD:4701.0 TVD:4700.7 I:1.2 A:156.4 VS:-1.5

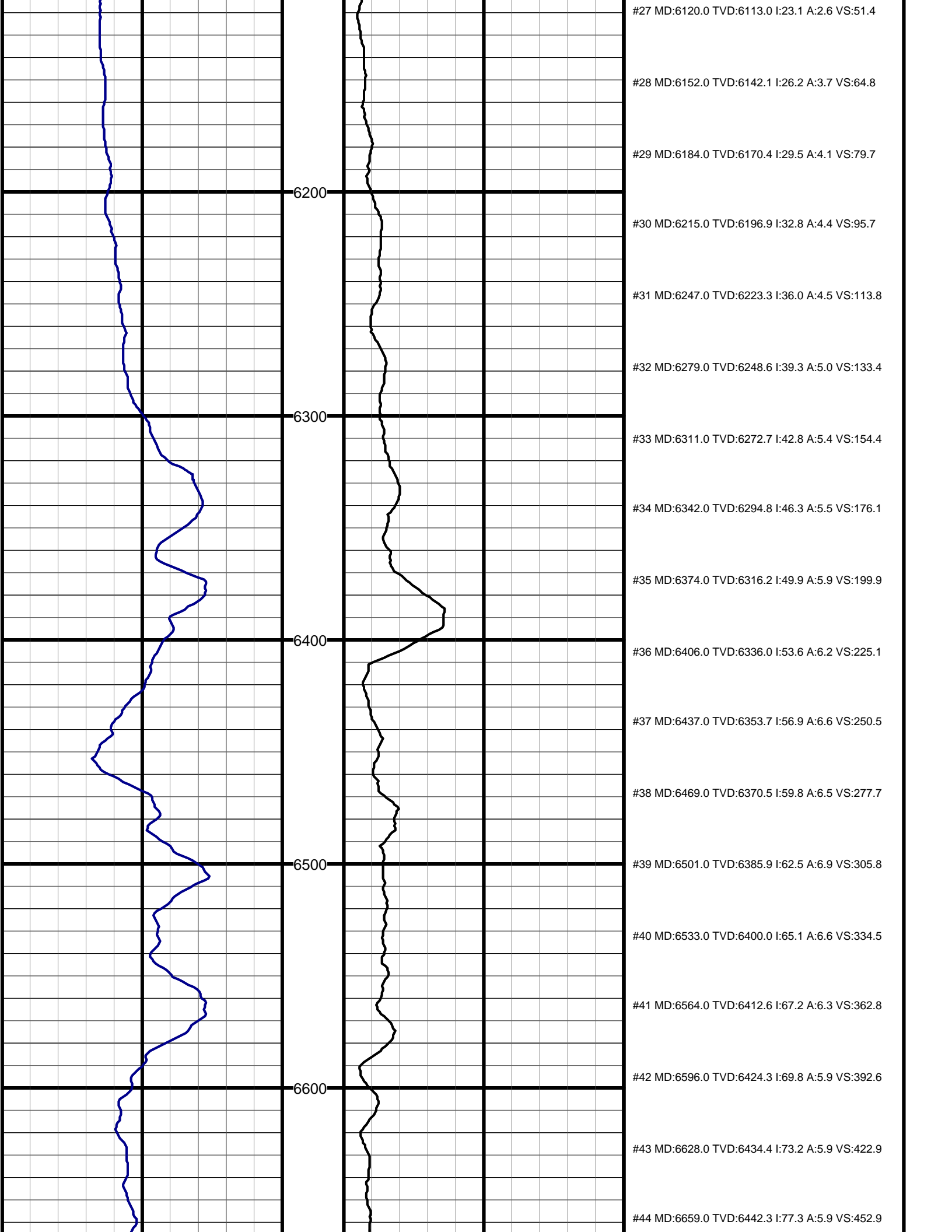
#6 MD:4797.0 TVD:4796.6 I:2.0 A:161.1 VS:-3.9

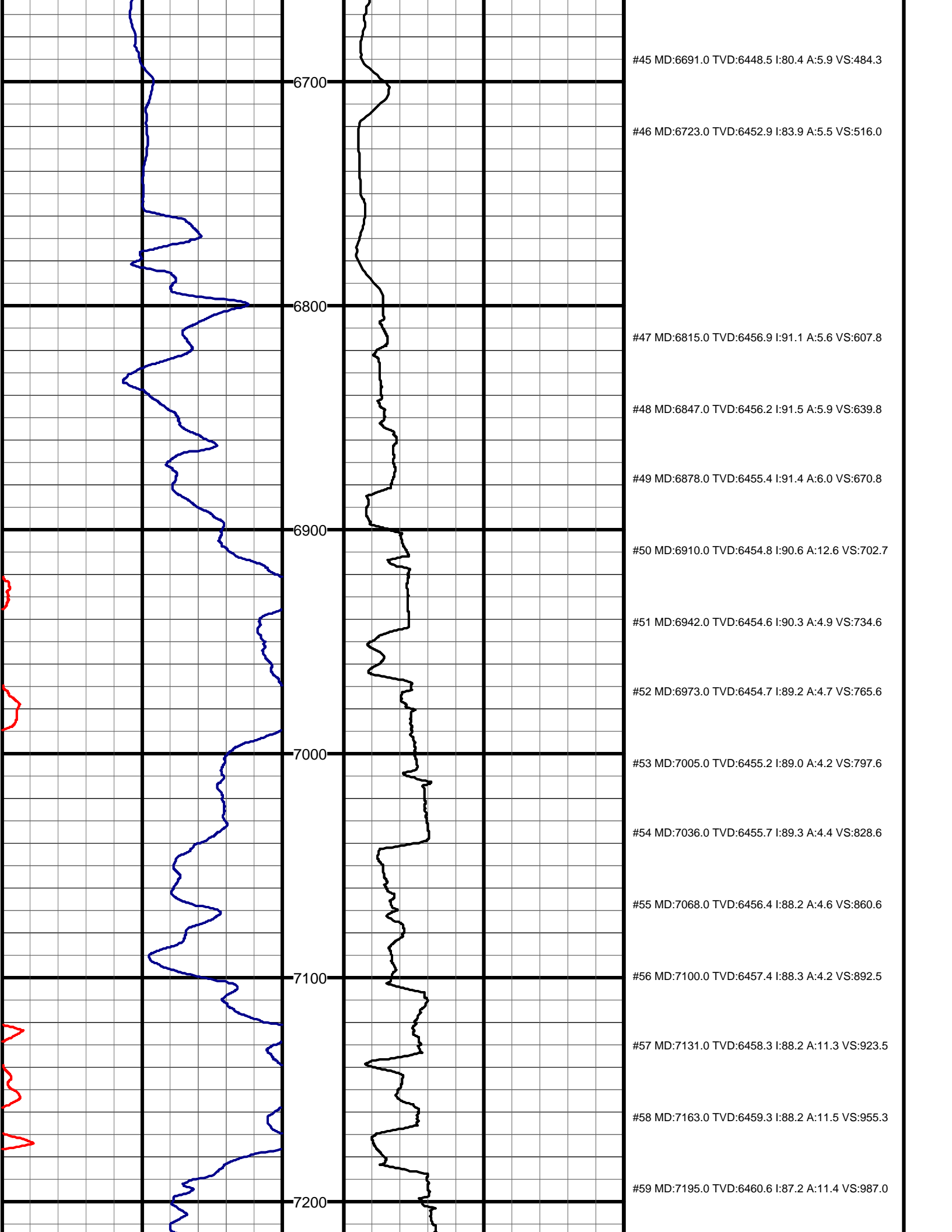
#7 MD:4892.0 TVD:4891.6 I:1.6 A:148.6 VS:-6.5

#8 MD:4987.0 TVD:4986.6 I:1.0 A:138.4 VS:-8.1









#45 MD:6691.0 TVD:6448.5 I:80.4 A:5.9 VS:484.3

6700

#46 MD:6723.0 TVD:6452.9 I:83.9 A:5.5 VS:516.0

6800

#47 MD:6815.0 TVD:6456.9 I:91.1 A:5.6 VS:607.8

#48 MD:6847.0 TVD:6456.2 I:91.5 A:5.9 VS:639.8

#49 MD:6878.0 TVD:6455.4 I:91.4 A:6.0 VS:670.8

6900

#50 MD:6910.0 TVD:6454.8 I:90.6 A:12.6 VS:702.7

#51 MD:6942.0 TVD:6454.6 I:90.3 A:4.9 VS:734.6

#52 MD:6973.0 TVD:6454.7 I:89.2 A:4.7 VS:765.6

7000

#53 MD:7005.0 TVD:6455.2 I:89.0 A:4.2 VS:797.6

#54 MD:7036.0 TVD:6455.7 I:89.3 A:4.4 VS:828.6

#55 MD:7068.0 TVD:6456.4 I:88.2 A:4.6 VS:860.6

7100

#56 MD:7100.0 TVD:6457.4 I:88.3 A:4.2 VS:892.5

#57 MD:7131.0 TVD:6458.3 I:88.2 A:11.3 VS:923.5

#58 MD:7163.0 TVD:6459.3 I:88.2 A:11.5 VS:955.3

7200

#59 MD:7195.0 TVD:6460.6 I:87.2 A:11.4 VS:987.0

