

MD 3169 TVD 3156.39  
INC 2.84 AZ 96.42  
VS 41.13

ROP (Ft/Hr)  
Gamma (API)

2000  
250

3200

PIERRE 3100' MD - 3200' MD

PARKMAN 3201' MD 3188' TVD

3100'- 3200': SS: 80% PRED WHT -  
LTGY - OPQ, FRI, FN GRN, WSRTD,  
CALC CMT, FREE SLTST, IMBD PYR,  
INTGR POR, NO STN, NO MIN  
FLOR, NO O FLOR, NO CUT, NO  
RNG

**PARKMAN**  
3201' MD 3188' TVD

-50

TG, C1-C4

450

CG 136u

MD 3264 TVD 3251.31  
INC 1.94 AZ 64.4  
VS 40.86

3250

3300

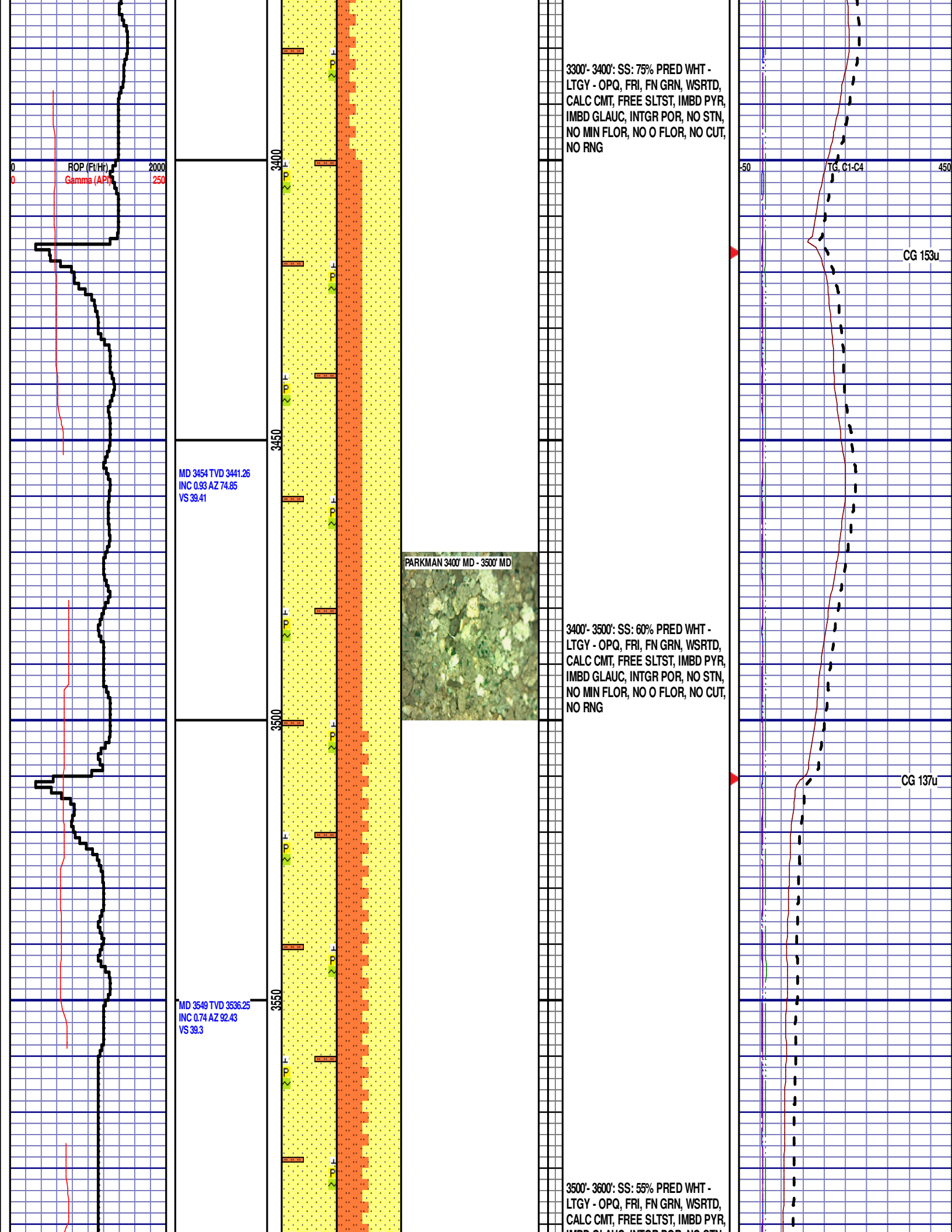
3200'- 3300': SS: 95% PRED WHT -  
LTGY - OPQ, FRI, FN GRN, WSRTD,  
CALC CMT, FREE SLTST, IMBD PYR,  
IMBD GLAUC, INTGR POR, NO STN,  
NO MIN FLOR, NO O FLOR, NO CUT,  
NO RNG

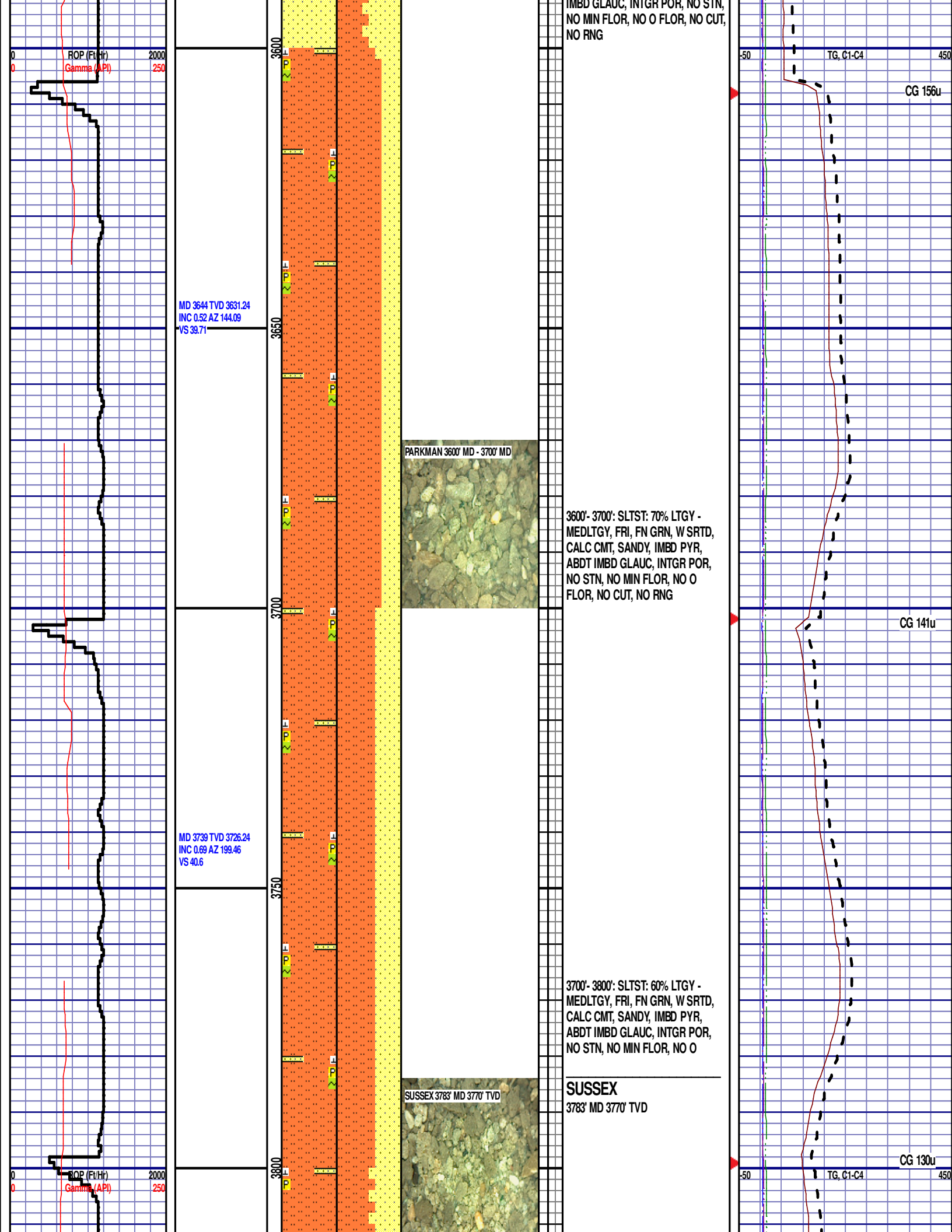
CG 130u

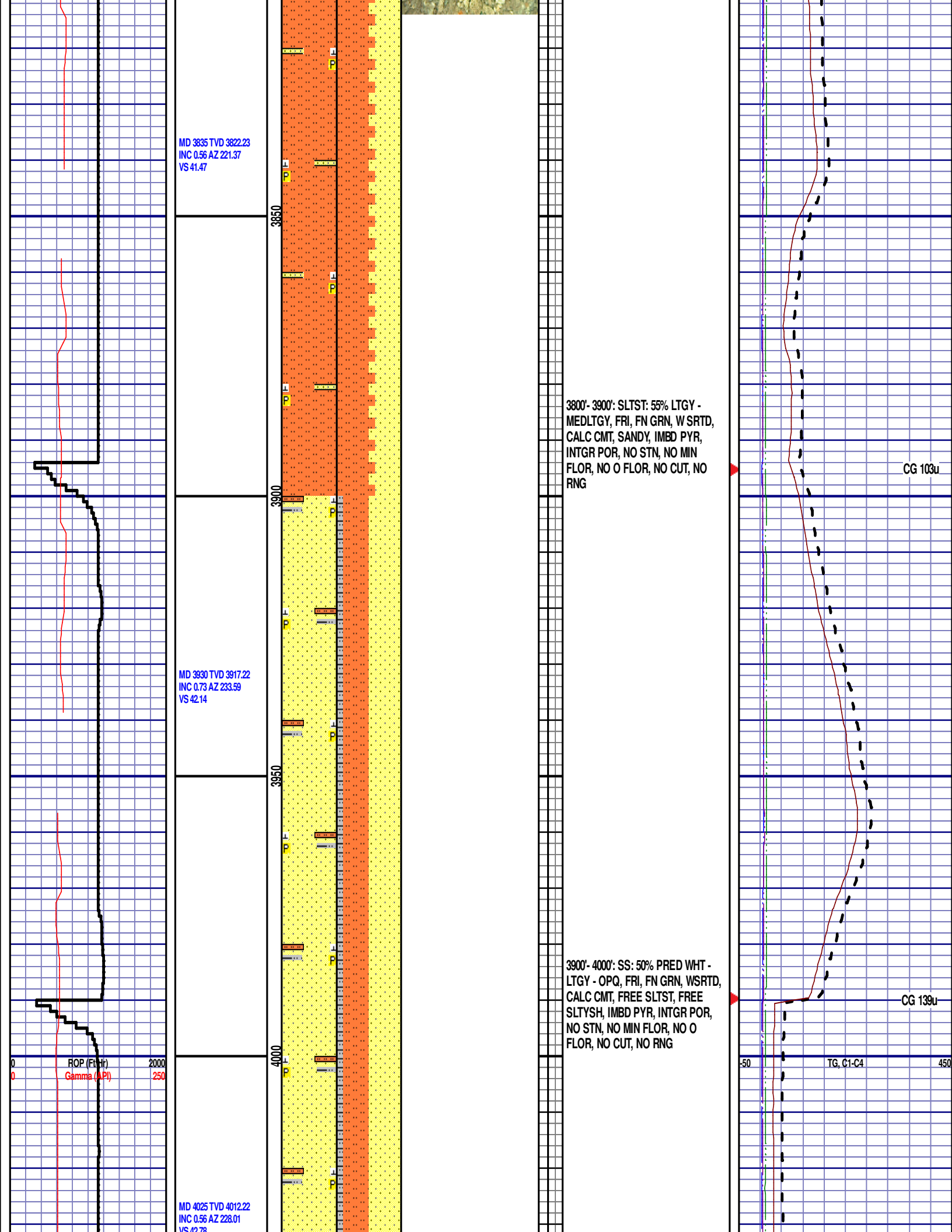
MD 3359 TVD 3346.27  
INC 1.17 AZ 67.96  
VS 39.91

3350



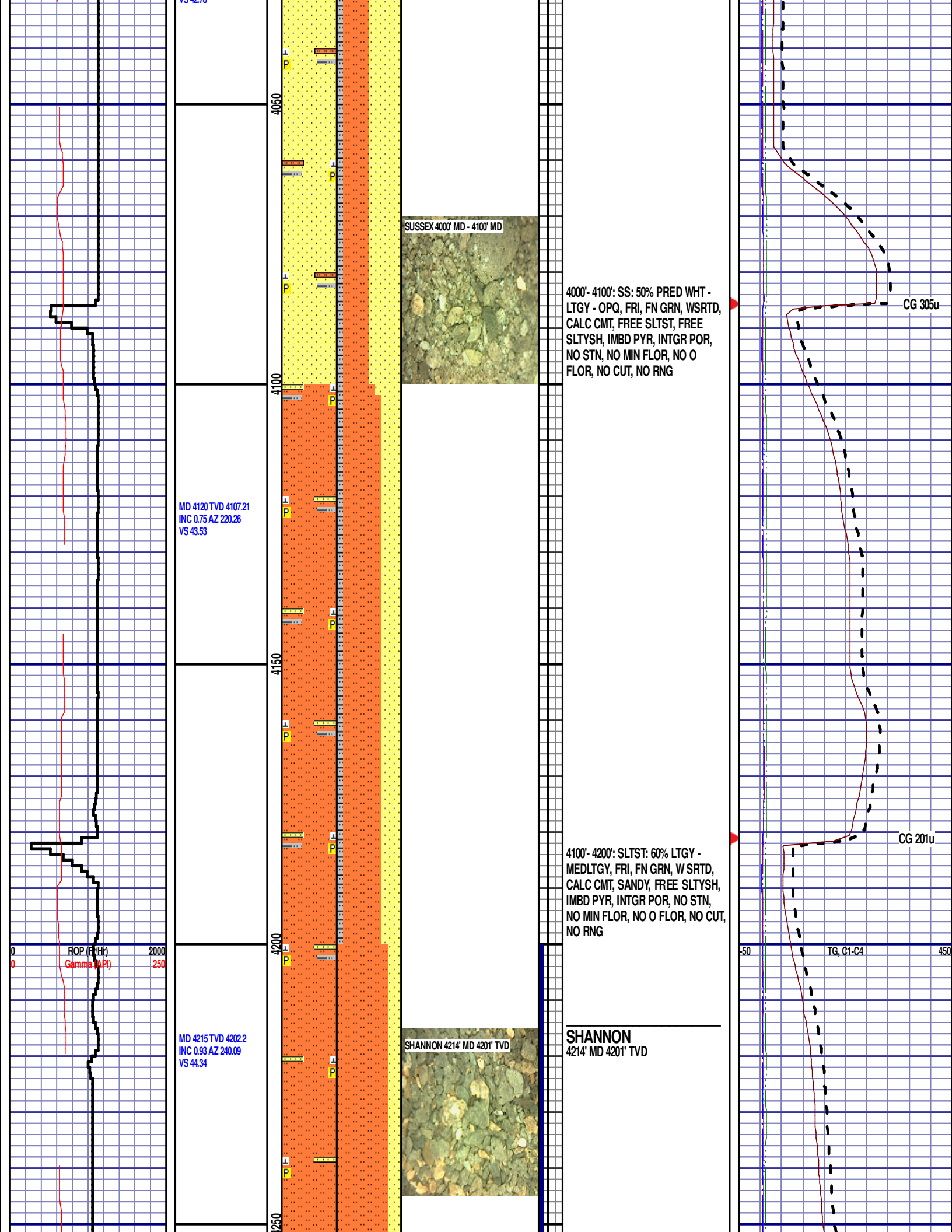


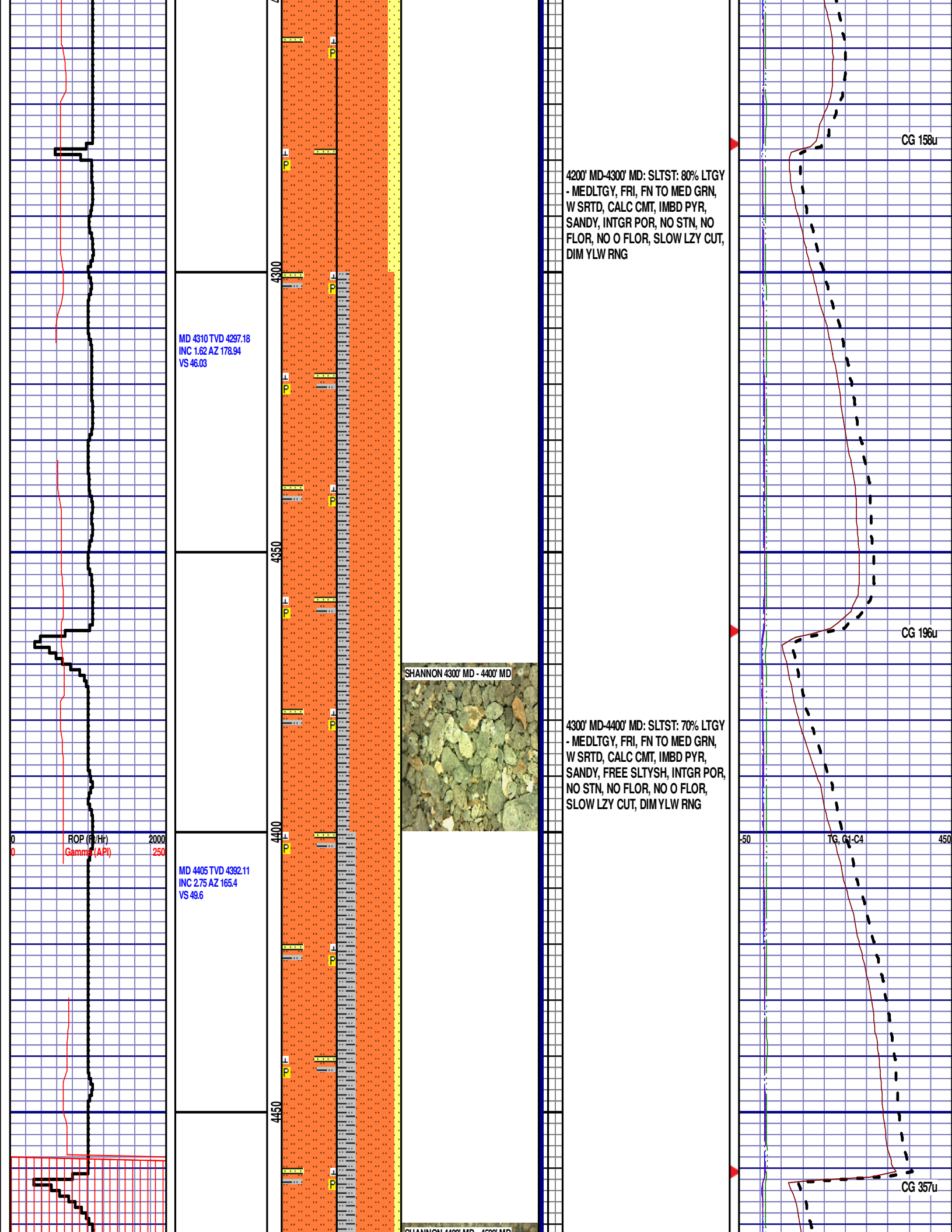


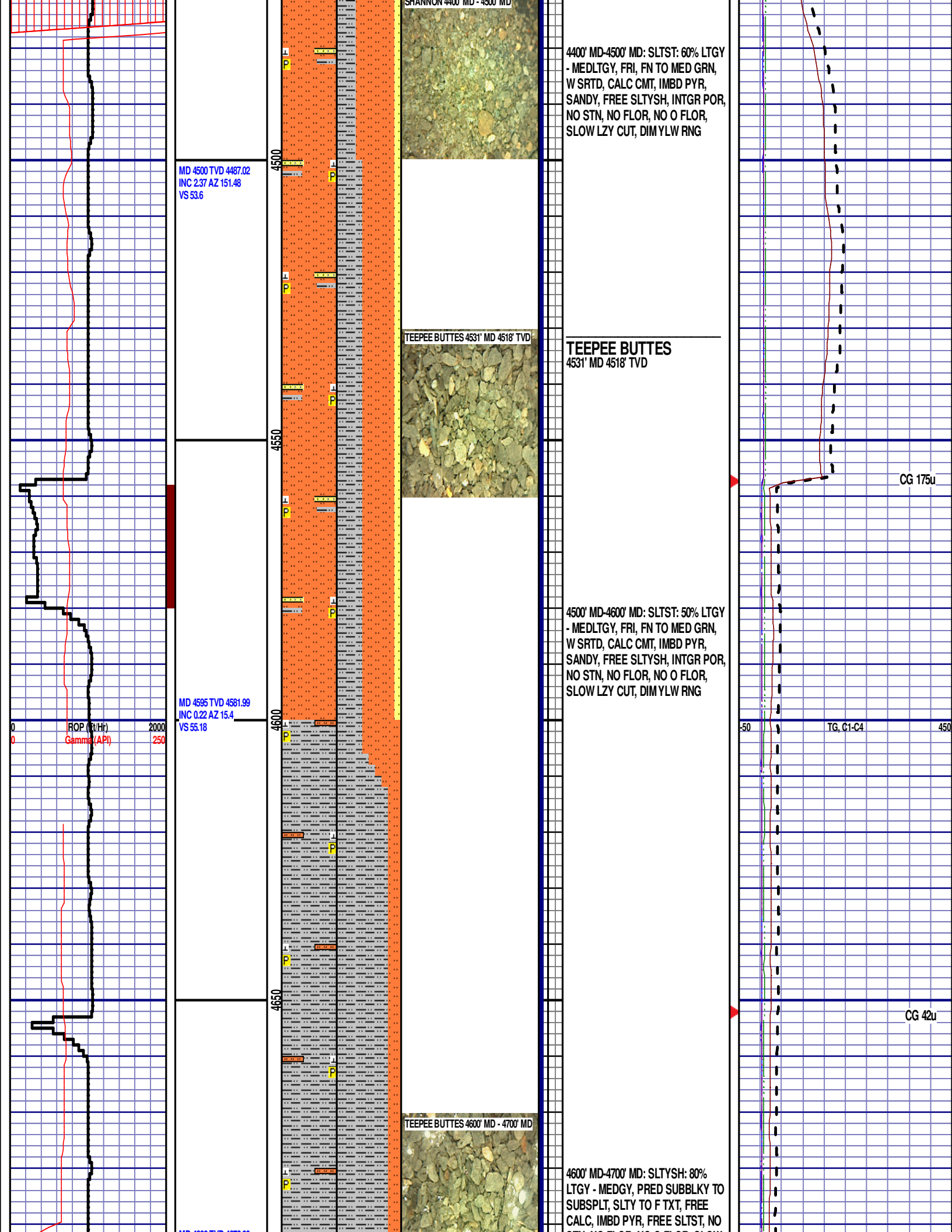




VS 42.70







MD 4500 TVD 4487.02  
INC 2.37 AZ 151.48  
VS 53.6

MD 4595 TVD 4581.99  
INC 0.22 AZ 15.4  
VS 55.18

4400' MD-4500' MD: SLTST: 60% LTGY  
- MEDLTGY, FRI, FN TO MED GRN,  
W SRTD, CALC CMT, IMBD PYR,  
SANDY, FREE SLTYSH, INTGR POR,  
NO STN, NO FLOR, NO O FLOR,  
SLOW LZY CUT, DIM YLW RNG

TEEPEE BUTTES  
4531' MD 4518' TVD

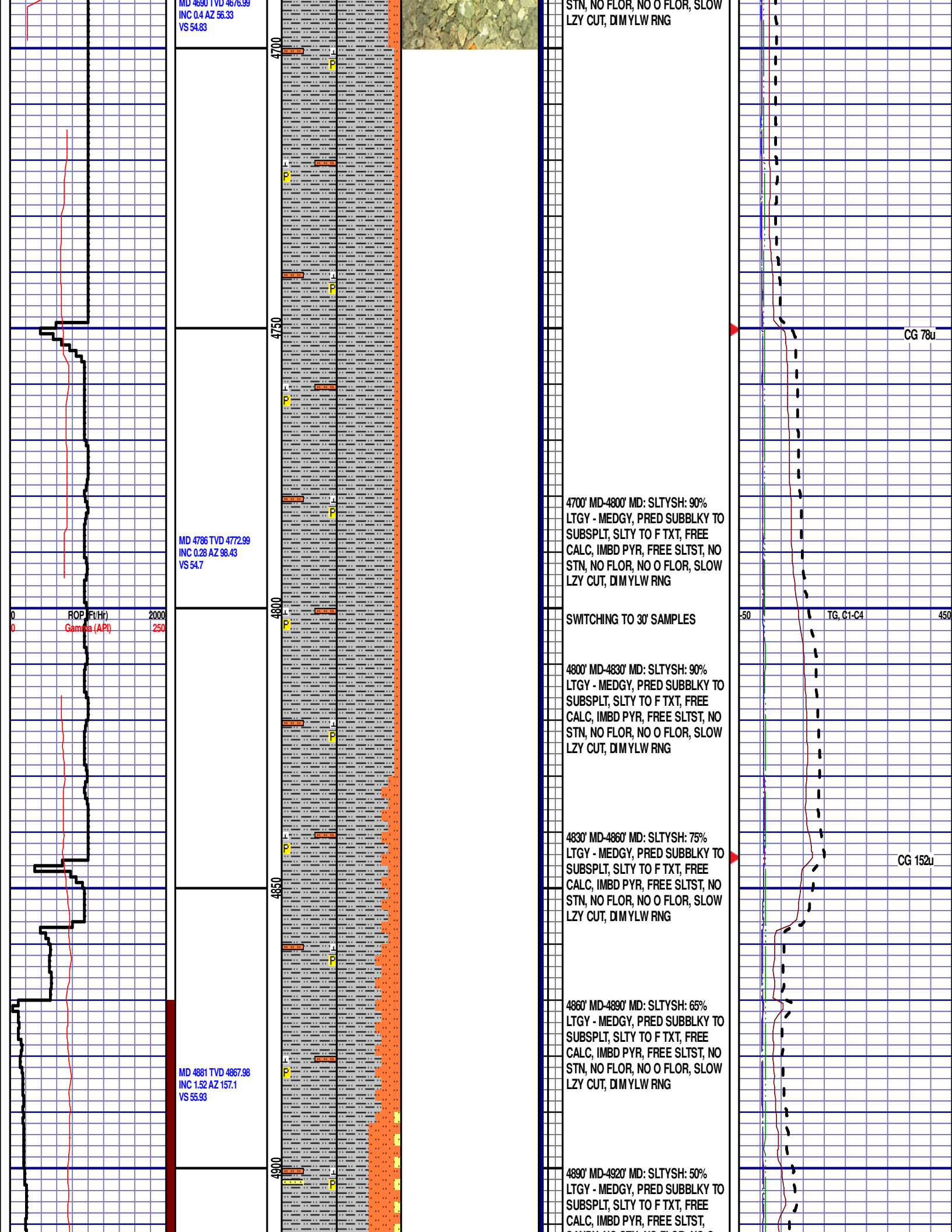
4500' MD-4600' MD: SLTST: 50% LTGY  
- MEDLTGY, FRI, FN TO MED GRN,  
W SRTD, CALC CMT, IMBD PYR,  
SANDY, FREE SLTYSH, INTGR POR,  
NO STN, NO FLOR, NO O FLOR,  
SLOW LZY CUT, DIM YLW RNG

4600' MD-4700' MD: SLTYSH: 80%  
LTGY - MEDGY, PRED SUBBLKY TO  
SUBSPLT, SLTY TO F TXT, FREE  
CALC, IMBD PYR, FREE SLTST, NO

MD 4690 TVD 4676.99  
INC 0.4 AZ 56.33  
VS 54.83

MD 4786 TVD 4772.99  
INC 0.28 AZ 98.43  
VS 54.7

MD 4881 TVD 4867.98  
INC 1.52 AZ 157.1  
VS 55.93



STN, NO FLOR, NO O FLOR, SLOW  
LZ Y CUT, DIM YLW RNG

4700' MD-4800' MD: SLTYSH: 90%  
LTGY - MEDGY, PRED SUBBLKY TO  
SUBSPLT, SLTY TO F TXT, FREE  
CALC, IMBD PYR, FREE SLTST, NO  
STN, NO FLOR, NO O FLOR, SLOW  
LZ Y CUT, DIM YLW RNG

SWITCHING TO 30' SAMPLES

4800' MD-4830' MD: SLTYSH: 90%  
LTGY - MEDGY, PRED SUBBLKY TO  
SUBSPLT, SLTY TO F TXT, FREE  
CALC, IMBD PYR, FREE SLTST, NO  
STN, NO FLOR, NO O FLOR, SLOW  
LZ Y CUT, DIM YLW RNG

4830' MD-4860' MD: SLTYSH: 75%  
LTGY - MEDGY, PRED SUBBLKY TO  
SUBSPLT, SLTY TO F TXT, FREE  
CALC, IMBD PYR, FREE SLTST, NO  
STN, NO FLOR, NO O FLOR, SLOW  
LZ Y CUT, DIM YLW RNG

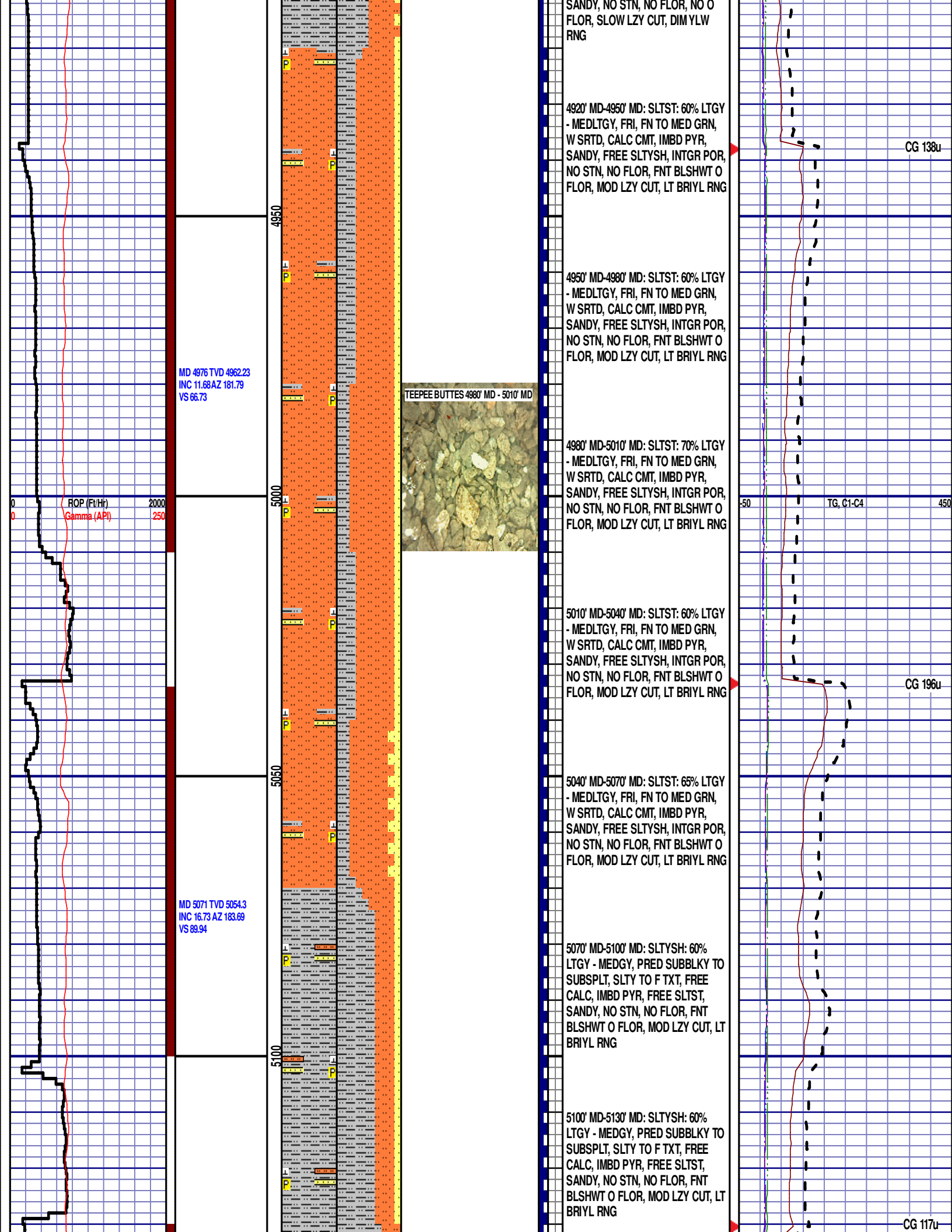
4860' MD-4890' MD: SLTYSH: 65%  
LTGY - MEDGY, PRED SUBBLKY TO  
SUBSPLT, SLTY TO F TXT, FREE  
CALC, IMBD PYR, FREE SLTST, NO  
STN, NO FLOR, NO O FLOR, SLOW  
LZ Y CUT, DIM YLW RNG

4890' MD-4920' MD: SLTYSH: 50%  
LTGY - MEDGY, PRED SUBBLKY TO  
SUBSPLT, SLTY TO F TXT, FREE  
CALC, IMBD PYR, FREE SLTST,

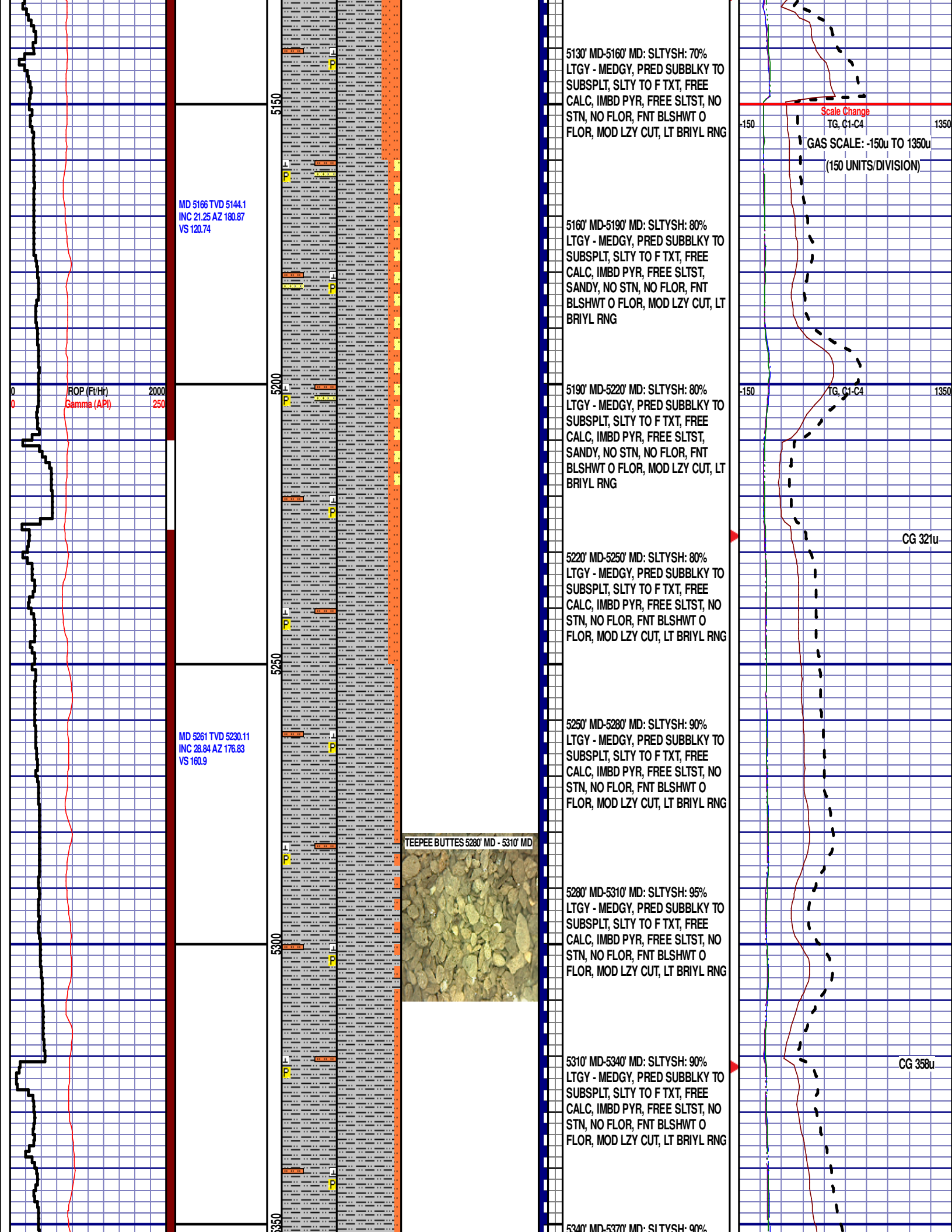
CG 78u

TG, C1-C4

CG 152u







MD 5166 TVD 5144.1  
INC 21.25 AZ 180.87  
VS 120.74

ROP (Ft/Hr)  
Gamma (API)

MD 5261 TVD 5230.11  
INC 28.84 AZ 176.83  
VS 160.9

TEEPEE BUTTES 5280' MD - 5310' MD



5130' MD-5160' MD: SLTYSH: 70%  
LTGY - MEDGY, PRED SUBBLKY TO  
SUBSPLT, SLTY TO F TXT, FREE  
CALC, IMBD PYR, FREE SLTST, NO  
STN, NO FLOR, FNT BLSHWT O  
FLOR, MOD LZY CUT, LT BRIYL RNG

5160' MD-5190' MD: SLTYSH: 80%  
LTGY - MEDGY, PRED SUBBLKY TO  
SUBSPLT, SLTY TO F TXT, FREE  
CALC, IMBD PYR, FREE SLTST,  
SANDY, NO STN, NO FLOR, FNT  
BLSHWT O FLOR, MOD LZY CUT, LT  
BRIYL RNG

5190' MD-5220' MD: SLTYSH: 80%  
LTGY - MEDGY, PRED SUBBLKY TO  
SUBSPLT, SLTY TO F TXT, FREE  
CALC, IMBD PYR, FREE SLTST,  
SANDY, NO STN, NO FLOR, FNT  
BLSHWT O FLOR, MOD LZY CUT, LT  
BRIYL RNG

5220' MD-5250' MD: SLTYSH: 80%  
LTGY - MEDGY, PRED SUBBLKY TO  
SUBSPLT, SLTY TO F TXT, FREE  
CALC, IMBD PYR, FREE SLTST, NO  
STN, NO FLOR, FNT BLSHWT O  
FLOR, MOD LZY CUT, LT BRIYL RNG

5250' MD-5280' MD: SLTYSH: 90%  
LTGY - MEDGY, PRED SUBBLKY TO  
SUBSPLT, SLTY TO F TXT, FREE  
CALC, IMBD PYR, FREE SLTST, NO  
STN, NO FLOR, FNT BLSHWT O  
FLOR, MOD LZY CUT, LT BRIYL RNG

5280' MD-5310' MD: SLTYSH: 95%  
LTGY - MEDGY, PRED SUBBLKY TO  
SUBSPLT, SLTY TO F TXT, FREE  
CALC, IMBD PYR, FREE SLTST, NO  
STN, NO FLOR, FNT BLSHWT O  
FLOR, MOD LZY CUT, LT BRIYL RNG

5310' MD-5340' MD: SLTYSH: 90%  
LTGY - MEDGY, PRED SUBBLKY TO  
SUBSPLT, SLTY TO F TXT, FREE  
CALC, IMBD PYR, FREE SLTST, NO  
STN, NO FLOR, FNT BLSHWT O  
FLOR, MOD LZY CUT, LT BRIYL RNG

5340' MD-5370' MD: SLTYSH: 90%

Scale Change  
TG, C1-C4

GAS SCALE: -150u TO 1350u  
(150 UNITS/DIVISION)

CG 321u

CG 358u

12:01AM  
01/16/2015  
DAY 02  
FT/24HRS 2852'

MD 5356 TVD 5308.89  
INC 38.93 AZ 181.1  
VS 213.74

ROP (Ft/Hr)  
Gamma (API)

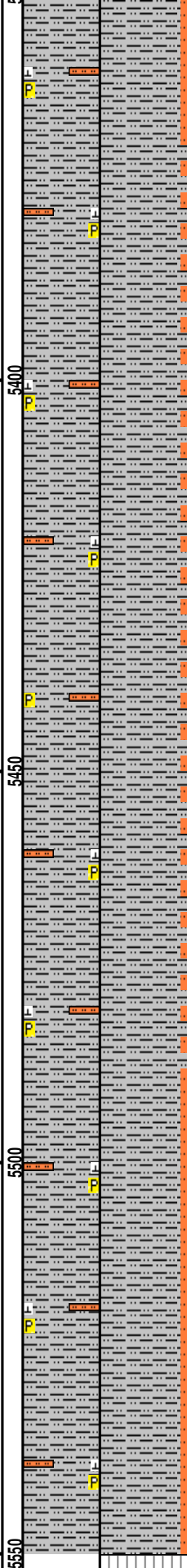
2000  
250

WOB 0.0K  
PP 4004  
RPM 0  
SPM 79/79

MD 5451 TVD 5374.04  
INC 54.15 AZ 182.21  
VS 282.31

WOB 0.0K  
PP 4211  
RPM 0  
SPM 79/78

MD 5546 TVD 5418.02  
INC 70.5 AZ 184.12  
VS 365.74



95% MEDGY - MEDGY, PRED SUBBLKY TO  
SUBSPLT, SLTY TO F TXT, FREE  
CALC, IMBD PYR, FREE SLTST, NO  
STN, NO FLOR, FNT BLSHWT O  
FLOR, MOD LZ Y CUT, LT BRIYL RNG

5370' MD-5400' MD: SLTYSH: 95%  
LTGY - MEDGY, PRED SUBBLKY TO  
SUBSPLT, SLTY TO F TXT, FREE  
CALC, IMBD PYR, FREE SLTST, NO  
STN, NO FLOR, FNT BLSHWT O  
FLOR, IMMED STRMG CUT, HVY  
BLSHWT RNG

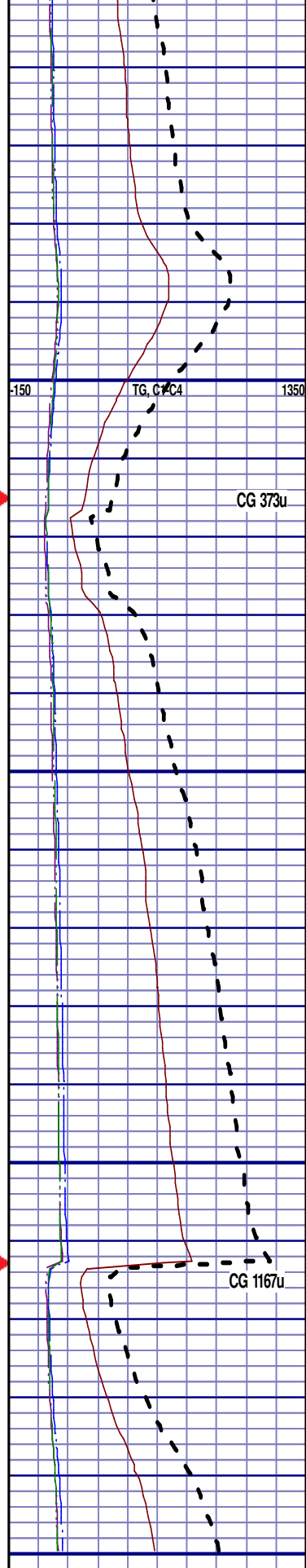
5400' MD-5430' MD: SLTYSH: 95%  
LTGY - MEDGY, PRED SUBBLKY TO  
SUBSPLT, SLTY TO F TXT, FREE  
CALC, IMBD PYR, FREE SLTST, NO  
STN, NO FLOR, FNT BLSHWT O  
FLOR, IMMED STRMG CUT, HVY  
BLSHWT RNG

5430' MD-5460' MD: SLTYSH: 95%  
LTGY - MEDGY, PRED SUBBLKY TO  
SUBSPLT, SLTY TO F TXT, FREE  
CALC, IMBD PYR, FREE SLTST, NO  
STN, NO FLOR, FNT BLSHWT O  
FLOR, IMMED STRMG CUT, HVY  
BLSHWT RNG

5460' MD-5490' MD: SLTYSH: 95%  
LTGY - MEDGY, PRED SUBBLKY TO  
SUBSPLT, SLTY TO F TXT, FREE  
CALC, IMBD PYR, FREE SLTST, NO  
STN, NO FLOR, FNT BLSHWT O  
FLOR, IMMED STRMG CUT, HVY  
BLSHWT RNG

5490' MD-5520' MD: SLTYSH: 90%  
LTGY - MEDGY, PRED SUBBLKY TO  
SUBSPLT, SLTY TO F TXT, FREE  
CALC, IMBD PYR, FREE SLTST, NO  
STN, NO FLOR, FNT BLSHWT O  
FLOR, IMMED STRMG CUT, HVY  
BLSHWT RNG

5520' MD-5550' MD: SLTYSH: 90%  
LTGY - MEDGY, PRED SUBBLKY TO  
SUBSPLT, SLTY TO F TXT, FREE  
CALC, IMBD PYR, FREE SLTST, NO  
STN, NO FLOR, FNT BLSHWT O  
FLOR, IMMED STRMG CUT, HVY  
BLSHWT RNG



					END OF VERTICAL LOG @ 5550' MD ON 01/16/15, CONTINUED ON HORIZONTAL LOG.	
--	--	--	--	--	--	--