

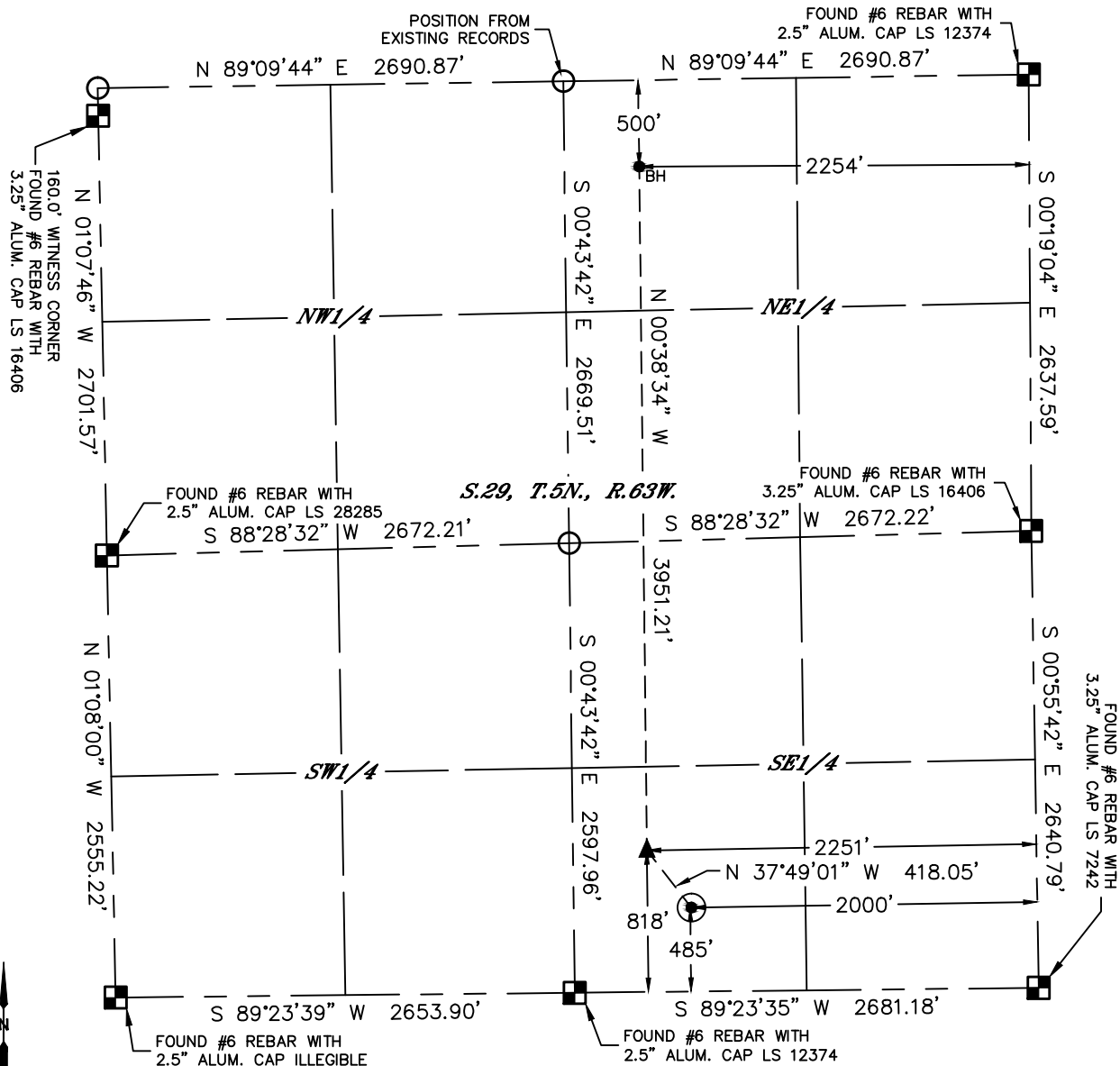


Lat40, Inc. 6250 W. 10th Street, Unit 2, Greeley, CO 970-515-5294

# WELL LOCATION CERTIFICATE

TRIMAR FARMS 29Q-321

SECTION: 29  
TOWNSHIP: 5N  
RANGE: 63W



CLIENT: PDC ENERGY, LLC				LANDMAN: JEFF DILLINGHAM			
INSTRUMENT OPERATOR: ADAM KELLY				SURVEY DATE: 1/28/2015		SURFACE USE: CROP LAND	
SHL FOOTAGE	SHL LAT °	SHL LONG °	SHL PDOP	SHL ELEV (FT.)	SHL 1/4/1/4	SHL S-T-R	
485 FSL 2000 FEL	40.36460	-104.45764	1.9	4572	SWSE	29-5-63	

BHL FOOTAGE	BHL LAT °	BHL LONG °	BHL S-T-R	EP LAT °	EP LONG °	EP S-T-R
500 FNL 2254 FEL	40.37636	-104.45854	29-5-63	40.36552	-104.45854	29-5-63

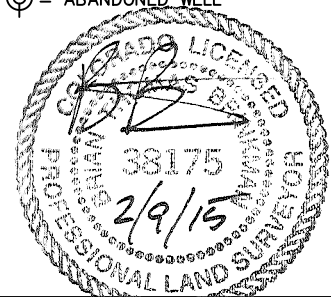
## NOTE:

- 1) Bearings shown are Grid Bearings of the Colorado State Plane Coordinate System, North Zone, North American Datum 1983. The lineal dimensions as contained herein are based upon the "U.S. Survey Foot."
- 2) Distances to section lines measured at 90 degrees from said section lines.
- 3) Ground elevations are based on an observed GPS elevation (NAVD 1988 DATUM).
- 4) Latitude and Longitude shown are (NAD 83 DATUM).
- 5) IMPROVEMENTS: See LOCATION DRAWING for all visible improvements within 500' of oil and gas location.
- 6) This map does not represent a boundary survey.

NEAREST CULTURAL ITEMS	
BUILDING	±782' SW
BUILDING UNIT	±807' SE
HIGH OCCUPANCY BUILDING UNIT	5280+
DESIGNATED OUTSIDE ACTIVITY AREA	5280+
PUBLIC ROAD (COUNTY ROAD 52)	±471' S
ABOVE GROUND UTILITY	±507' S
RAILROAD	±1550' NE
PROPERTY LINE	±485' S

## LEGEND

- = ALIQUOT MONUMENT AS DESCRIBED
- = CALCULATED POSITION
- = SURFACE HOLE LOCATION (SHL)
- ▲ = ENTRY POINT LOCATION (EP)
- BH = BOTTOM HOLE LOCATION (BHL)
- ⊕ = EXISTING WELL
- ⊙ = ABANDONED WELL



Brian T. Brinkman—On behalf of Lat40, Inc.  
Colorado Licensed Professional Land Surveyor No. 38175  
DATE: 2/9/2015  
PROJECT#: 2014131

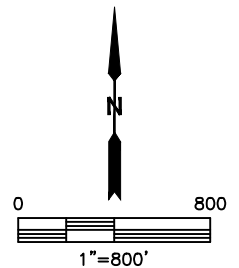
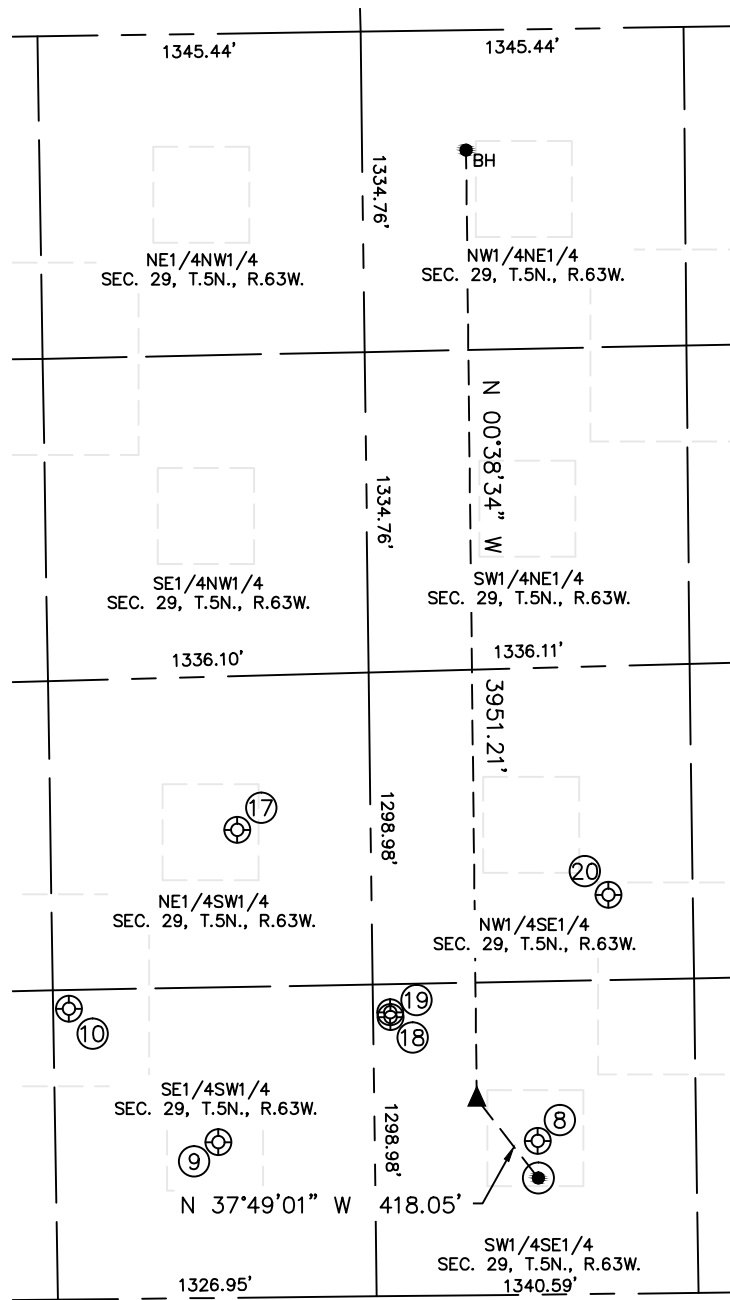


Lat40°, Inc. 6250 W. 10th Street, Unit 2, Greeley, CO 970-515-5294

## SITE SKETCH

TRIMAR FARMS 29Q-321

SECTION: 29  
TOWNSHIP: 5N  
RANGE: 63W



WELL NO.	WELL NAME	SHL FOOTAGE				SHL LAT°	SHL LONG°	PDOP	ELEV (FT.)	1/4/1/4
8	SIEBRING 34-29U	640	FSL	2000	FEL	40.36503	-104.45764	2.8	4572	SWSE
9	ROTHE 24-29U	649	FSL	2007	FWL	40.36506	-104.46241	2.2	4573	SESW
10	ROTHE 29BU	1210	FSL	1396	FWL	40.36660	-104.46462	1.7	4565	SESW
17	ROTHE 23-29U	1948	FSL	2112	FWL	40.36862	-104.46207	1.7	4566	NESW
18	SIEBRING 29PU	1161	FSL	2605	FEL	40.36646	-104.45982	1.6	4571	SWSE
19	SIEBRING 33-29DU	1182	FSL	2605	FEL	40.36652	-104.45982	3.3	4571	SWSE
20	WEST HARDIN 1	1661	FSL	1690	FEL	40.36783	-104.45654	1.7	4560	NWSE

DATE: 2/9/2015  
PROJECT#: 2014131