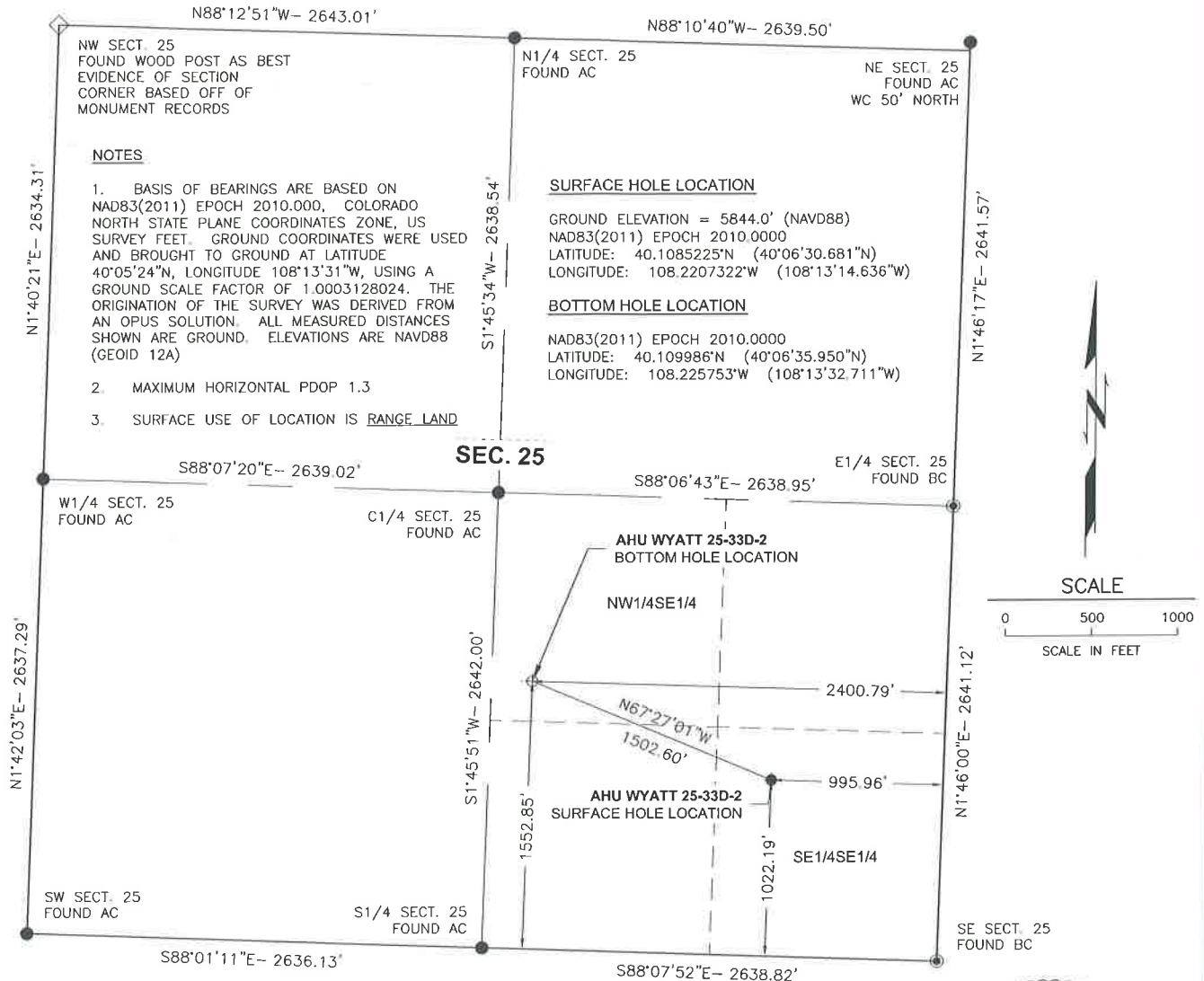


AHU WYATT 25-33D-2

SECTION 25, T.2N., R.97W., 6TH P.M., RIO BLANCO COUNTY, COLORADO



CERTIFICATE OF SURVEYOR

I, JUSTIN G. NESS, BEING A LICENSED LAND SURVEYOR IN THE STATE OF COLORADO DO HEREBY CERTIFY TO KOCH EXPLORATION COMPANY, LLC, THAT THIS WELL LOCATION CERTIFICATE SHOWN HEREON WAS DONE BY ME OR UNDER MY DIRECT SUPERVISION AND THAT THE DRAWING SHOWN HEREON ACCURATELY DEPICTS THE PROPOSED LOCATION OF THE WELL. THIS CERTIFICATE CANNOT BE RELIED UPON TO DETERMINE LAND OWNERSHIP.



WELL - AHU WYATT 25-33D-2

996' FEL & 1022' FSL OF SECTION 25 (SURFACE HOLE LOCATION)
 2401' FEL & 1553' FSL OF SECTION 25 (BOTTOM HOLE LOCATION)

PREPARED FOR:

KOCH

KOCH EXPLORATION COMPANY, LLC

IN COORDINATION WITH:

② Dot Consulting

ENVIRONMENTAL • REGULATORY • WATER RESOURCE MANAGEMENT

PROJECT NO: 151207

DATE SURVEYED: 3/12/15

SURVEYED BY: LP

DATE DRAFTED: 3/13/15

DRAWN BY: JGN

CHK'D BY: JGN

REVISION DATE: 3/16/15

GDA
ENGINEERS

ENGINEERING • SURVEYING • PLANNING

502 33RD STREET CODY, WY 82414

PH. #: 307-587-3411 • WWW.GDAENGINEERS.COM

DRAWING TITLE:

WELL LOCATION CERTIFICATE

SHEET #

3B

OF 10
SHEETS

AHU WYATT 25-33D-2
 SECTION 25, T.2N., R.97W., 6TH P.M.
 RIO BLANCO COUNTY, COLORADO