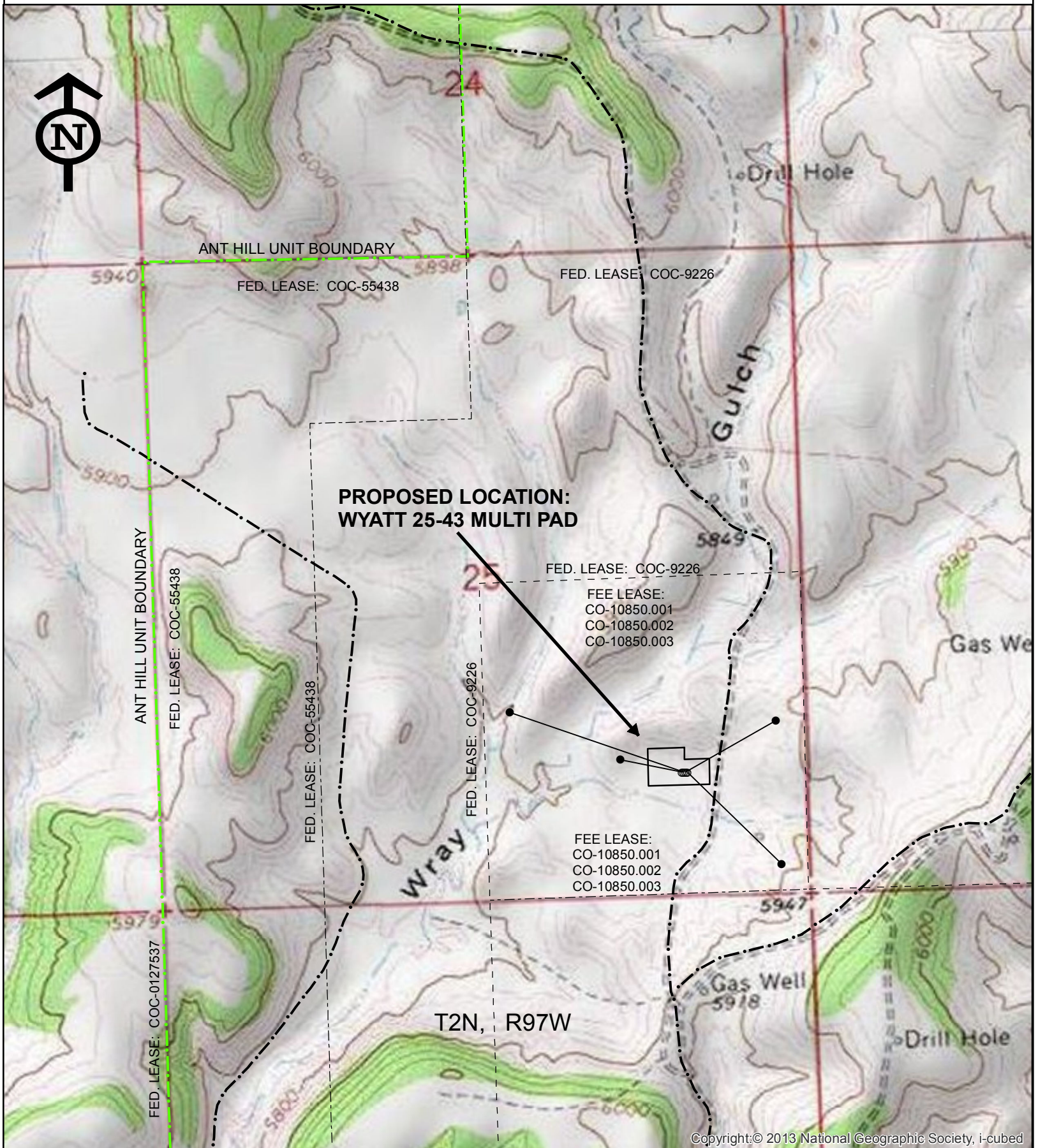


MINERAL LEASE MAP: WYATT 25-43 MULTI PAD

SECTION 25, TOWNSHIP 2N, RANGE 97W, 6TH P.M. RIO BLANCO COUNTY, CO.



PREPARED FOR:
Koch Exploration Company

0 1,000 2,000
Feet

DATE SURVEYED:
DATE DRAFTED: 02/24/2015
DRAFTED BY: CJD CHECKED BY:
JOB No. REVISED:

WYATT 25-43 MULTI PAD

WYATT 25-43 MULTI PAD
TOWNSHIP 2N, RANGE 97W, SECTION 25

LEGEND

- SURFACE HOLE LOCATION
- BOTTOM HOLE LOCATION
- WELL PAD LOCATION
- ANT HILL BOUNDARY
- - - LEASE BOUNDARY
- - - EXISTING ROADS