

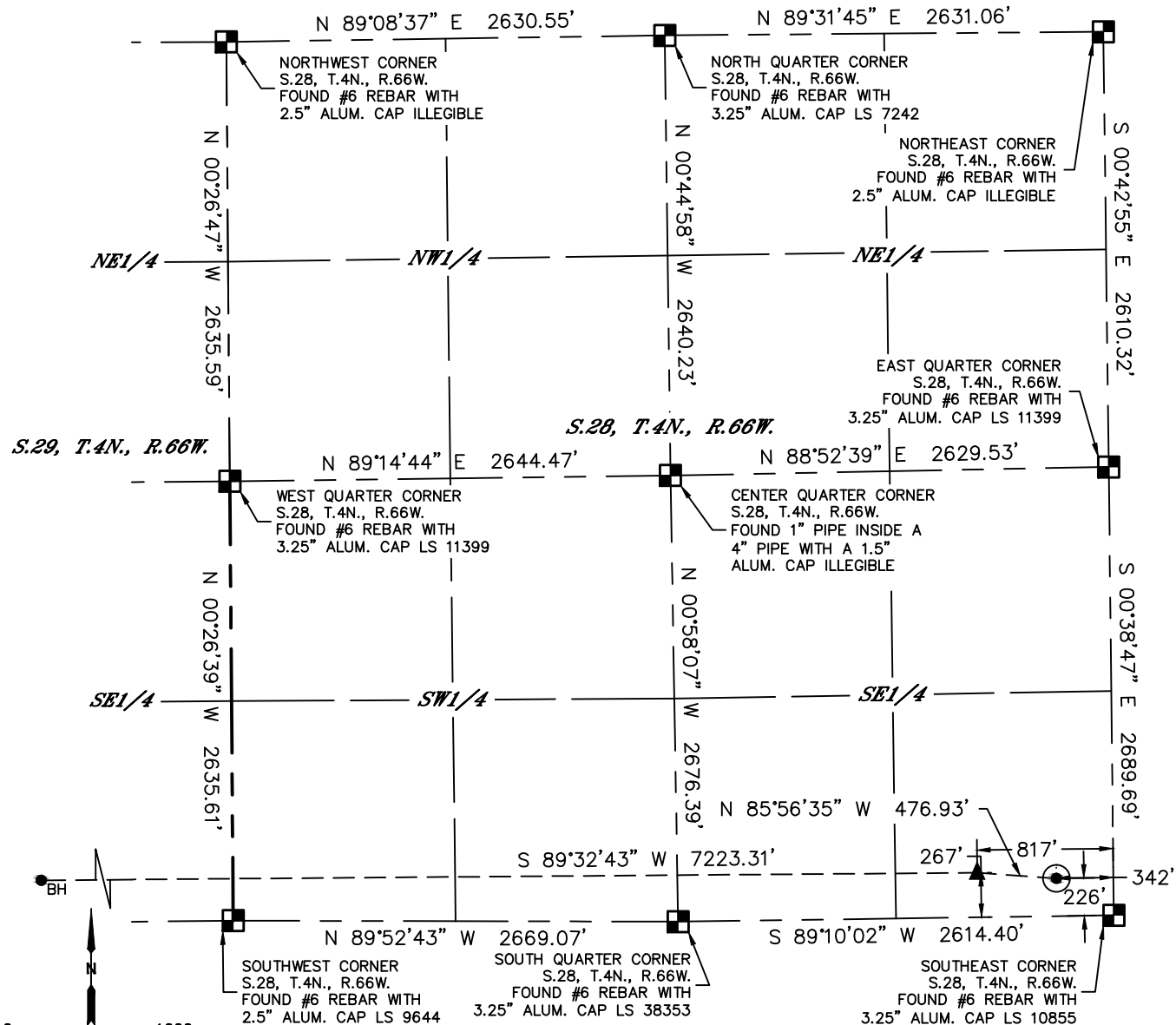


Lat40°, Inc. 6250 W. 10th Street, Unit 2, Greeley, CO 970-515-5294

WELL LOCATION CERTIFICATE

HUNT FEDERAL 28Y-214

SECTION: 28
TOWNSHIP: 4N
RANGE: 66W
6TH. P.M.
WELD COUNTY, CO



CLIENT: PDC ENERGENCY				LANDMAN: MAC NEUMANN			
INSTRUMENT OPERATOR: ADAM BEAUPREZ				SURVEY DATE: 10/16/2014		SURFACE USE: CROP LAND	
SHL FOOTAGE	SHL LAT °	SHL LONG °	SHL PDOP	SHL ELEV (FT.)	SHL	SHL S-T-R	
226 FSL 342 FEL	40.27596	-104.77421	2.0	4762	SESE	28-4-66	

BHL FOOTAGE	BHL LAT °	BHL LONG °	BHL S-T-R	EP LAT °	EP LONG °	EP S-T-R
260 FSL 2550 FWL	40.27607	-104.80179	29-4-66	40.27607	-104.77591	28-4-66

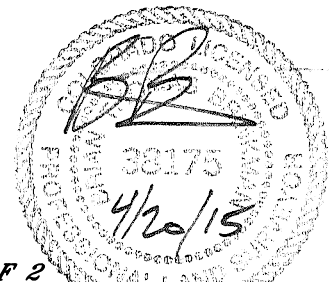
LEGEND

- = ALIQUOT MONUMENT AS DESCRIBED
- = CALCULATED POSITION
- = SURFACE HOLE LOCATION (SHL)
- ▲ = ENTRY POINT LOCATION (EP)
- BH = BOTTOM HOLE LOCATION (BHL)
- ⊙ = EXISTING WELL
- ⊙ = ABANDONED WELL

NOTE:

- 1) Bearings shown are Grid Bearings of the Colorado State Plane Coordinate System, North Zone, North American Datum 1983. The lineal dimensions as contained herein are based upon the "U.S. Survey Foot."
- 2) Distances to section lines measured at 90 degrees from said section lines.
- 3) Ground elevations are based on an observed GPS elevation (NAVD 1988 DATUM).
- 4) Latitude and Longitude shown are (NAD 83 DATUM).
- 5) IMPROVEMENTS: See LOCATION DRAWING for all visible improvements within 500' of disturbed area.

NEAREST CULTURAL ITEMS	
BUILDING	±425' S
BUILDING UNIT	±438' SW
HIGH OCCUPANCY BUILDING UNIT	±3196' NW
DESIGNATED OUTSIDE ACTIVITY AREA	5280'+
PUBLIC ROAD (COUNTY ROAD 40)	±214' S
ABOVE GROUND UTILITY	±255' S
RAILROAD	±1798' NW
PROPERTY LINE	±203' NW



SHEET 1 OF 2

Brian T. Brinkman—On behalf of Lat40°, Inc.
Colorado Licensed Professional Land Surveyor No. 38175
DATE: 4/20/2014
PROJECT#: 2013114

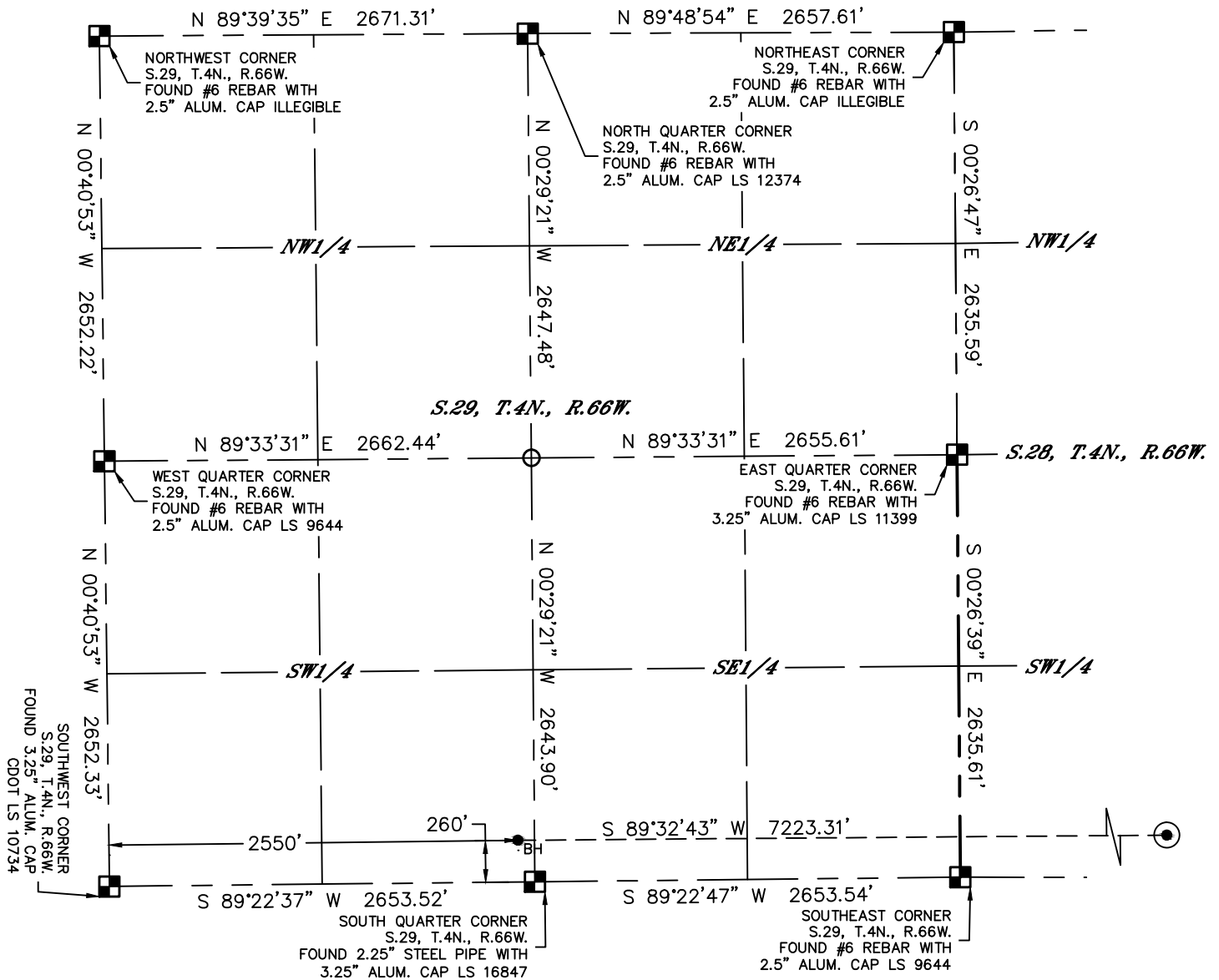


Lat40°, Inc. 6250 W. 10th Street, Unit 2, Greeley, CO 970-515-5294

WELL LOCATION CERTIFICATE

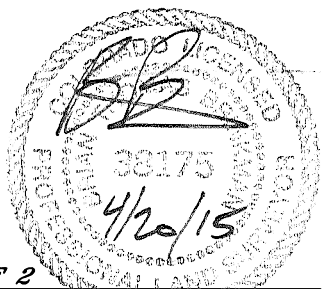
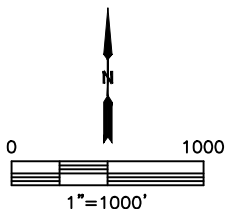
HUNT FEDERAL 28Y-214

SECTION: 28
TOWNSHIP: 4N
RANGE: 66W
6TH. P.M.
WELD COUNTY, CO



LEGEND

- = ALIQUOT MONUMENT AS DESCRIBED
- = CALCULATED POSITION
- ⊙ = SURFACE HOLE LOCATION (SHL)
- ▲ = ENTRY POINT LOCATION (EP)
- = BOTTOM HOLE LOCATION (BHL)
- ⊕ = EXISTING WELL
- ⊖ = ABANDONED WELL



SHEET 2 OF 2

Brian T. Brinkman—On behalf of Lat40°, Inc.
Colorado Licensed Professional Land Surveyor No. 38175
DATE: 4/20/2014
PROJECT#: 2013114

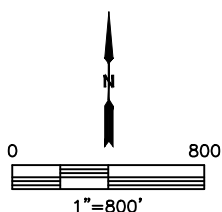
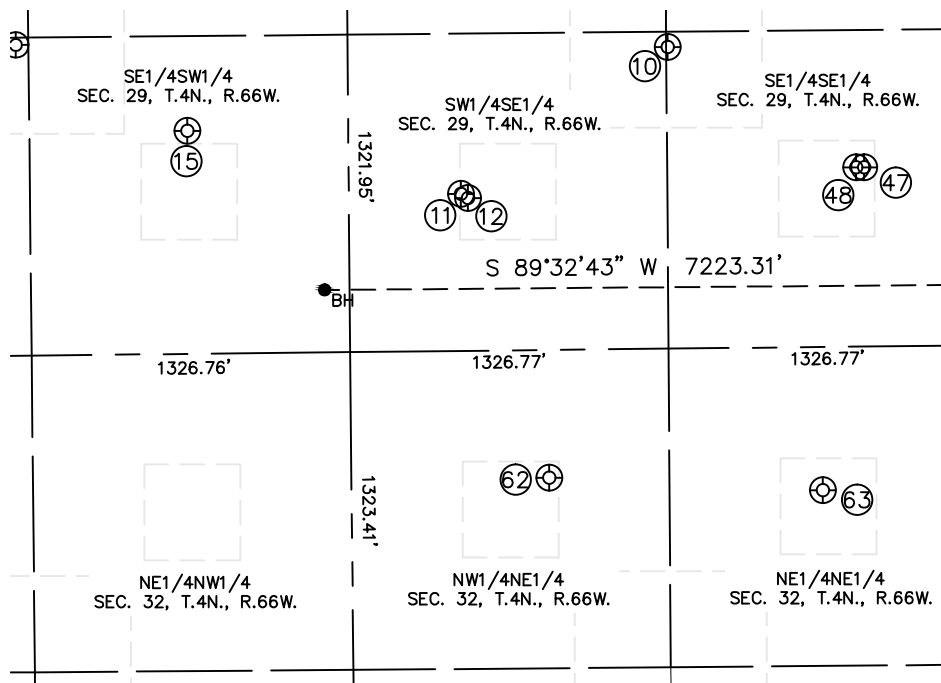
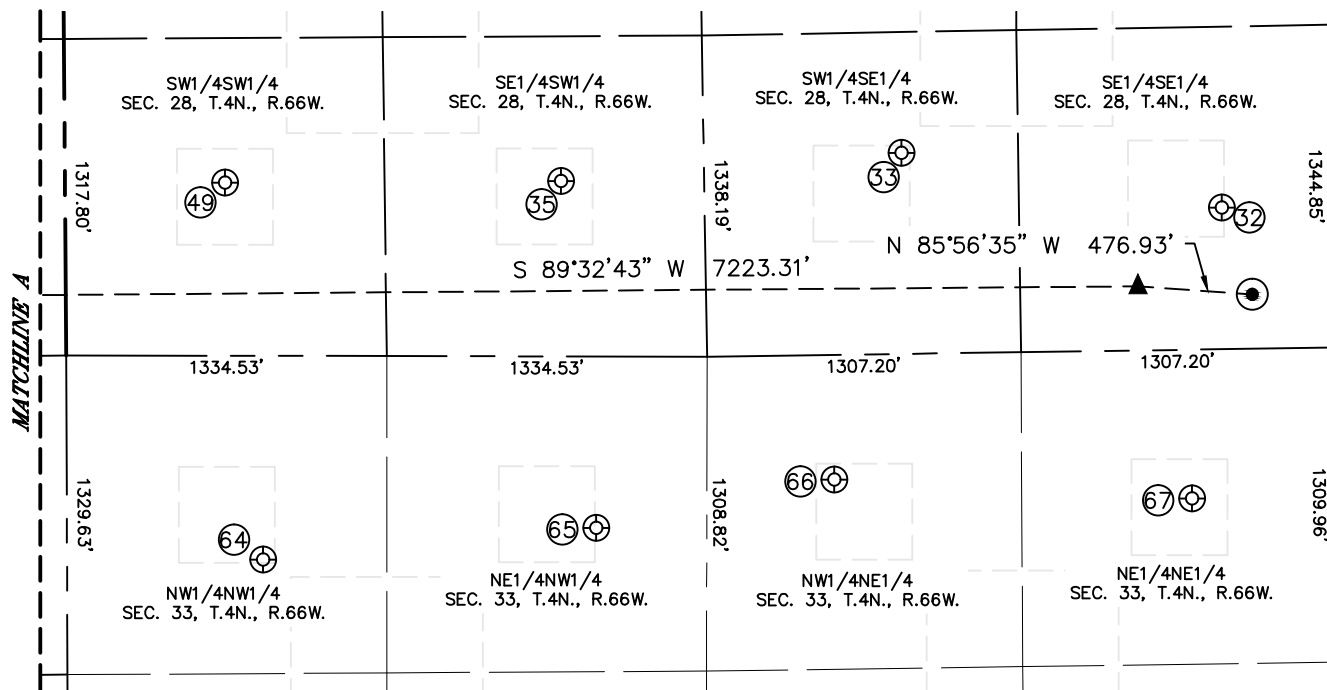


Lat40°, Inc. 6250 W. 10th Street, Unit 2, Greeley, CO 970-515-5294

SITE SKETCH

HUNT FEDERAL 28Y-214

SECTION: 28
TOWNSHIP: 4N
RANGE: 66W
6TH. P.M.
WELD COUNTY, CO





Lat40°, Inc. 6250 W. 10th Street, Unit 2, Greeley, CO 970-515-5294

SITE SKETCH

HUNT FEDERAL 28Y-214

SECTION: 28
TOWNSHIP: 4N
RANGE: 66W
6TH. P.M.
WELD COUNTY, CO

WELL NO.	WELL NAME	SHL FOOTAGE				SHL LAT°	SHL LONG°	PDOP	ELEV (FT.)	1/4/1/4
10	MCLEOD 6	1255	FSL	1321	FEL	40.27881	-104.79664	2.1	4769	SESE
11	MCLEOD 29-2	653	FSL	2187	FEL	40.27715	-104.79974	2.1	4773	SWSE
12	MCLEOD 29-29X	636	FSL	2158	FEL	40.27711	-104.79964	3.3	4772	SWSE
15	WIEDEMAN 29-3	928	FSL	1986	FWL	40.27790	-104.80382	2.1	4765	SESW
32	LORENZ 44-28	590	FSL	464	FEL	40.27696	-104.77465	1.9	4761	SESE
33	LORENZ 34-28	836	FSL	1796	FEL	40.27761	-104.77943	1.8	4756	SWSE
35	KEISER 14-28	731	FSL	2065	FWL	40.27732	-104.78451	2.1	4753	SESW
47	MCLEOD 2	746	FSL	507	FEL	40.27742	-104.79373	2.0	4765	SESE
48	MCLEOD 2-29B	746	FSL	541	FEL	40.27742	-104.79385	1.7	4765	SESE
49	KEISER 13-28	720	FSL	667	FWL	40.27733	-104.78952	1.7	4761	SWSW
62	AGRICULTURAL PROD INC 32-2F	533	FNL	1826	FEL	40.27390	-104.79846	2.6	4771	NWNE
63	AGRICULTURAL PROD INC 32-1F	596	FNL	686	FEL	40.27373	-104.79438	1.8	4763	NENE
64	UPRC FEDERAL 33-4F	849	FNL	816	FWL	40.27302	-104.78900	2.3	4758	NWNW
65	UPRC FEDERAL 33-3F	713	FNL	2204	FWL	40.27336	-104.78403	2.3	4760	NENW
66	SWEET VALLEY FARMS UPRR 31-33 2	520	FNL	2093	FEL	40.27388	-104.78047	2.3	4760	NWNE
67	SWEET VALLEY FARMS UPRR 41-33	620	FNL	603	FEL	40.27364	-104.77513	1.6	4768	NENE