

**PROPOSED LOCATION:  
WILDWOOD FED #1**

1,000' OFFSET

**T9N**

**T8N**

**R  
62  
W**

**LEGEND:**

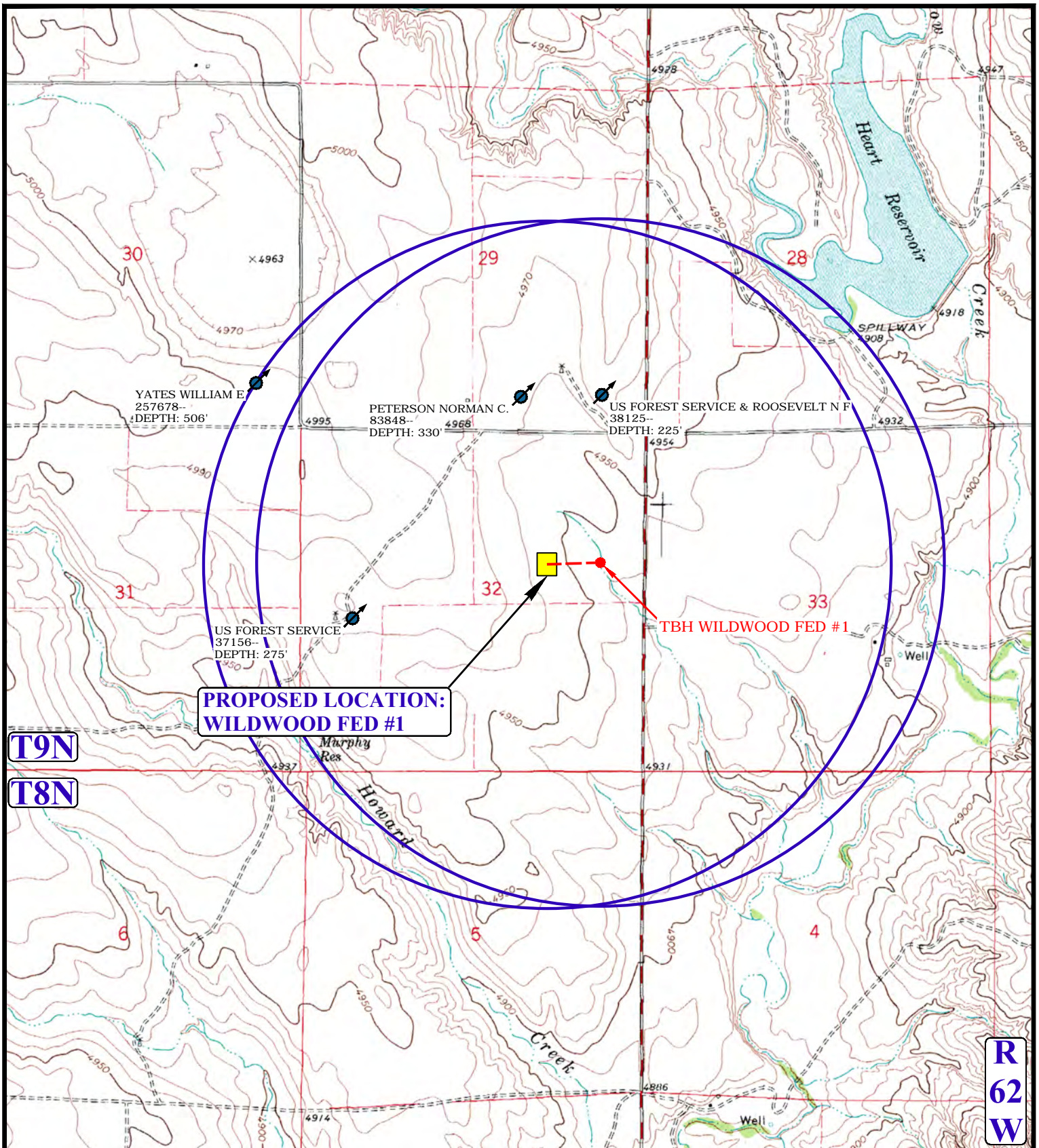
**DUNCAN OIL, INC.**

**WILDWOOD FED #1  
SECTION 32, T9N, R62W, 6th P.M.  
1980' FNL 1500' FEL**



**UELS, LLC**  
Corporate Office \* 85 South 200 East  
Vernal, UT 84078 \* (435) 789-1017

DRAWN BY: C.D.L.	DATE DRAWN: 12-22-14
SCALE: 1" = 2000'	REVISED: 03-16-15
<b>HYDROLOGY MAP</b>	<b>TOPO W</b>



**LEGEND:**

- ⊘ DISPOSAL WELLS
- PRODUCING WELLS
- SHUT IN WELLS
- ⊘ WATER WELLS
- TEMPORARILY ABANDONED
- ABANDONED WELLS

**DUNCAN OIL, INC.**

**WILDWOOD FED #1  
SECTION 32, T9N, R62W, 6th P.M.  
1980' FNL 1500' FEL**



DRAWN BY: C.D.L.

DATE DRAWN: 12-22-14

SCALE: 1" = 2000'

REVISED: 03-16-15

**WELL PROXIMITY MAP**

**TOPO C**



**UELS, LLC**  
Corporate Office \* 85 South 200 East  
Vernal, UT 84078 \* (435) 789-1017