

BONANZA CREEK ENERGY INC.

WELD COUNTY, COLORADO (NAD 83)

SE SE SEC. 29 T5N R61W 6th P.M.

STATE PRONGHORN 44-14-29HNB

JOB # 2015-006-25

15 April, 2015

Survey: FINAL SURVEYS

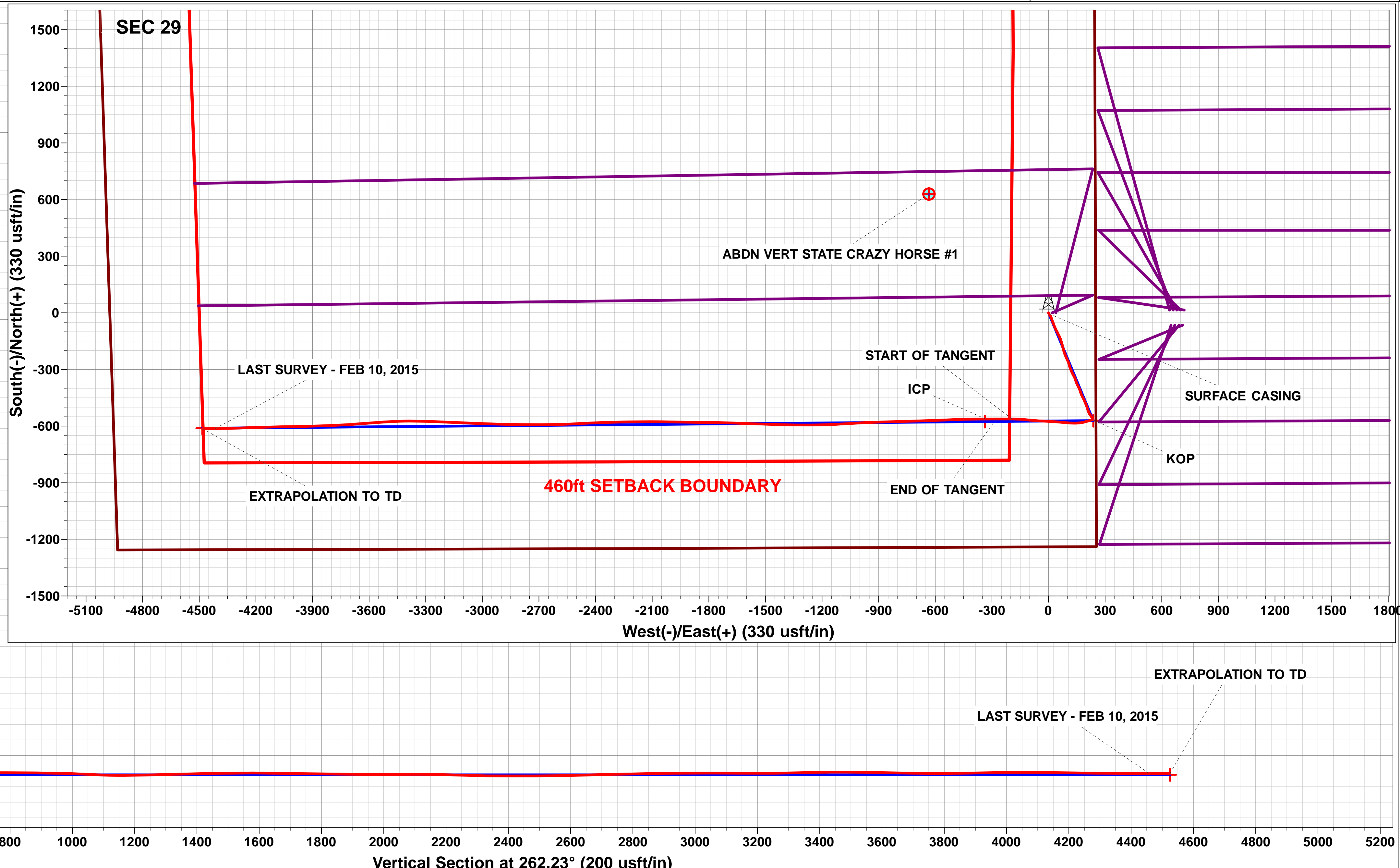
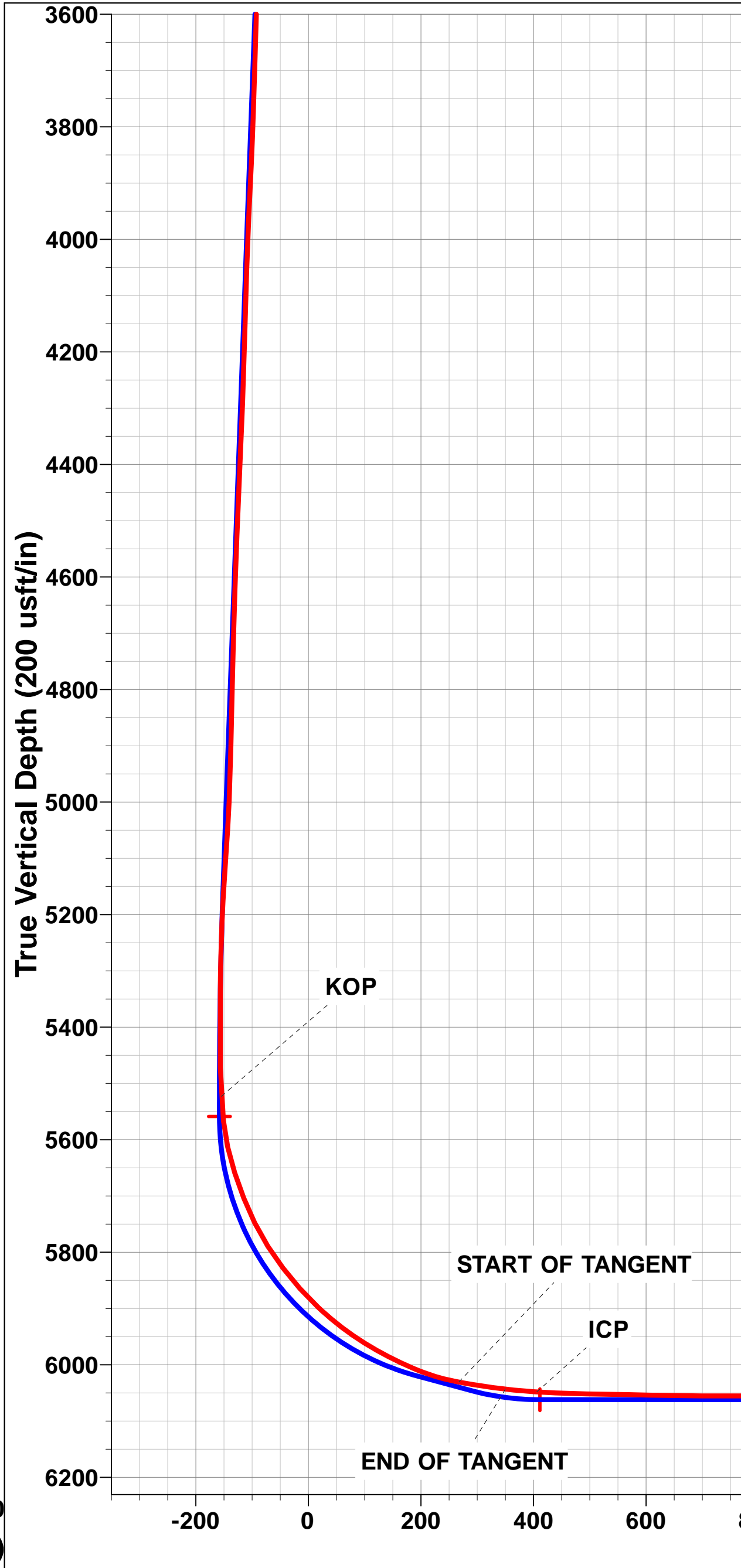
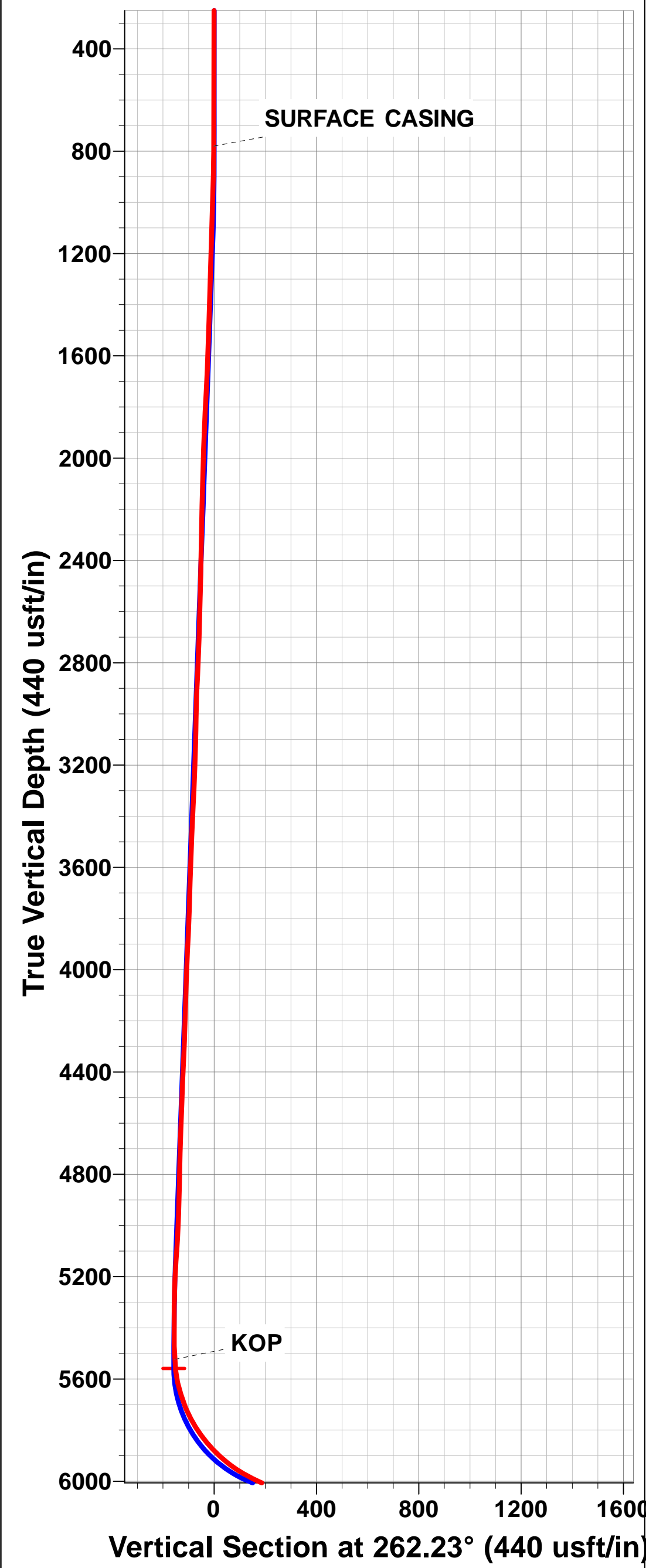
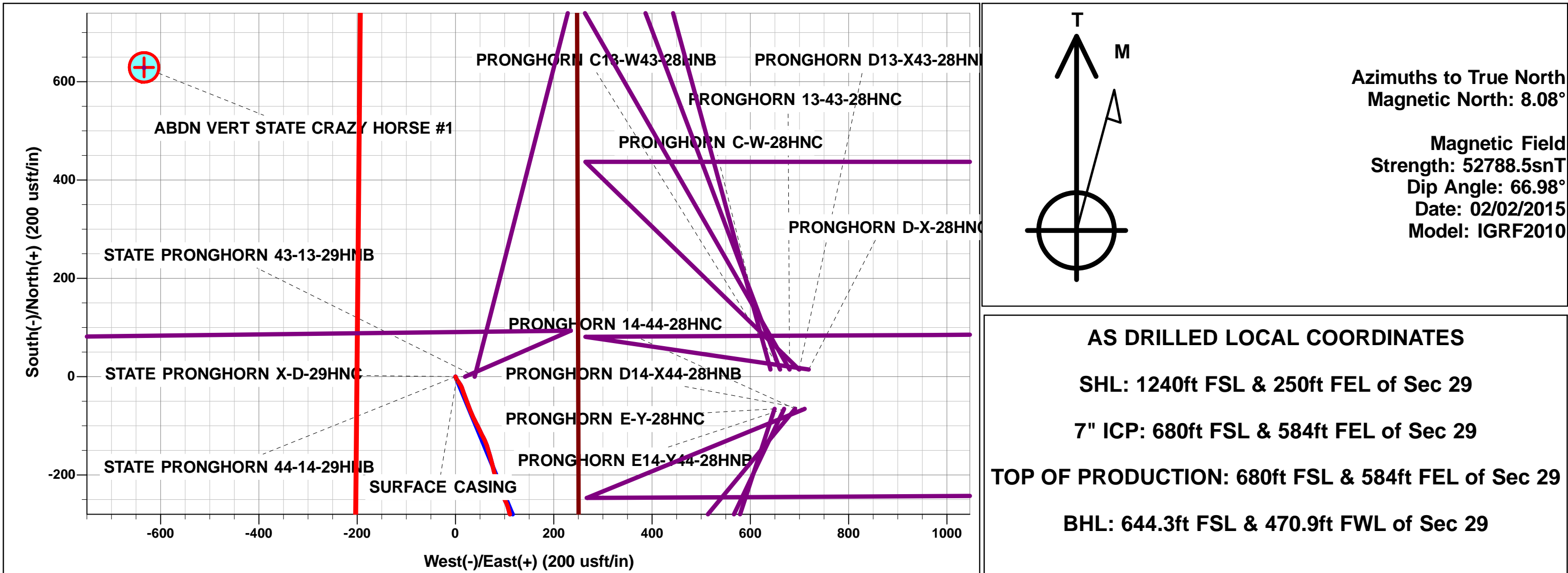




Project: WELD COUNTY, COLORADO (NAD 83)
Site: SE SE SEC. 29 T5N R61W 6th P.M.
Well: STATE PRONGHORN 44-14-29HNB
Wellbore: JOB # 2015-006-25
Design: FINAL SURVEYS

ANNOTATIONS									
TVD	MD	Inc	Azi	+N/-S	+E/-W	VSect	Dep	Annotation	
780.0	780.0	0.78	154.70	-4.8	2.3	-1.6	5.4	SURFACE CASING	
5523.2	5565.0	3.52	258.21	-565.6	233.2	-154.6	619.8	KOP	
6030.7	6280.0	79.55	270.45	-562.3	-193.1	267.3	1048.4	START OF TANGENT	
6043.2	6365.0	83.34	269.54	-562.3	-277.1	350.6	1132.4	END OF TANGENT	
6048.3	6421.0	86.10	269.60	-562.8	-332.9	405.9	1188.3	ICP	
6057.7	10507.0	90.00	268.80	-612.9	-4415.7	4458.0	5273.5	LAST SURVEY - FEB 10, 2015	
6057.7	10574.0	90.00	268.80	-614.3	-4482.7	4524.6	5340.5	EXTRAPOLATION TO TD	

WELLBORE TARGET DETAILS (LAT/LONG)					
Name	TVD	+N/-S	+E/-W	Latitude	Longitude
7" ICP *NEW* - STATE PRONGHORN 44-14-29HNB	6062.0	-576.1	-336.7	40.366389	-104.225698
BHL - STATE PRONGHORN 44-14-29HNB	6062.0	-611.6	-4483.6	40.366290	-104.240580
KOP - STATE PRONGHORN 44-14-29HNB	5558.7	-571.2	237.3	40.366402	-104.223638



Survey Report



Company:	BONANZA CREEK ENERGY INC.	Local Co-ordinate Reference:	Well STATE PRONGHORN 44-14-29HNB
Project:	WELD COUNTY, COLORADO (NAD 83)	TVD Reference:	KB @ 4618.0usft (CADE 25)
Site:	SE SE SEC. 29 T5N R61W 6th P.M.	MD Reference:	KB @ 4618.0usft (CADE 25)
Well:	STATE PRONGHORN 44-14-29HNB	North Reference:	True
Wellbore:	JOB # 2015-006-25	Survey Calculation Method:	Minimum Curvature
Design:	FINAL SURVEYS	Database:	EDM 5000.1 Single User Db

Project	WELD COUNTY, COLORADO (NAD 83)		
Map System:	US State Plane 1983	System Datum:	Mean Sea Level
Geo Datum:	North American Datum 1983		
Map Zone:	Colorado Northern Zone		Using geodetic scale factor

Site	SE SE SEC. 29 T5N R61W 6th P.M.				
Site Position:		Northing:	1,379,448.09 usft	Latitude:	40.367970
From:	Lat/Long	Easting:	3,355,398.33 usft	Longitude:	-104.224490
Position Uncertainty:	0.0 usft	Slot Radius:	1.10000ft	Grid Convergence:	0.82 °

Well	STATE PRONGHORN 44-14-29HNB					
Well Position	+N/-S	0.0 usft	Northing:	1,379,448.09 usft	Latitude:	40.367970
	+E/-W	0.0 usft	Easting:	3,355,398.33 usft	Longitude:	-104.224490
Position Uncertainty		0.0 usft	Wellhead Elevation:	usft	Ground Level:	4,601.0 usft

Wellbore	JOB # 2015-006-25				
Magnetics	Model Name	Sample Date	Declination (°)	Dip Angle (°)	Field Strength (nT)
	IGRF2010	02/02/2015	8.08	66.98	52,789

Design	FINAL SURVEYS				
Audit Notes:					
Version:	1.0	Phase:	ACTUAL	Tie On Depth:	0.0
Vertical Section:	Depth From (TVD) (usft)	+N/-S (usft)	+E/-W (usft)	Direction (°)	
	0.0	0.0	0.0	262.23	

Survey Program	Date	15/04/2015			
From (usft)	To (usft)	Survey (Wellbore)	Tool Name	Description	
801.0	10,574.0	FINAL SURVEYS (JOB # 2015-006-25)	MWD	MWD - Standard	

Survey										
Measured Depth (usft)	Inclination (°)	Azimuth (°)	Vertical Depth (usft)	Subsea Depth (usft)	+N/-S (usft)	+E/-W (usft)	Vertical Section (usft)	Dogleg Rate (°/100usft)	Build Rate (°/100usft)	Turn Rate (°/100usft)
0.0	0.00	0.00	0.0	4,618.0	0.0	0.0	0.0	0.00	0.00	0.00
SURFACE CASING										
780.0	0.78	154.70	780.0	3,838.0	-4.8	2.3	-1.6	0.10	0.10	0.00
801.0	0.80	154.70	801.0	3,817.0	-5.1	2.4	-1.7	0.10	0.10	0.00
878.0	2.70	148.50	877.9	3,740.1	-7.1	3.6	-2.6	2.48	2.47	-8.05
969.0	4.30	141.80	968.8	3,649.2	-11.6	6.8	-5.2	1.81	1.76	-7.36
1,061.0	5.40	152.80	1,060.4	3,557.6	-18.2	10.9	-8.4	1.56	1.20	11.96
1,155.0	7.20	161.90	1,153.9	3,464.1	-27.7	14.8	-10.9	2.18	1.91	9.68
1,245.0	8.70	159.90	1,243.0	3,375.0	-39.4	18.9	-13.3	1.69	1.67	-2.22
1,336.0	8.40	157.90	1,333.0	3,285.0	-52.1	23.7	-16.5	0.46	-0.33	-2.20
1,428.0	7.80	160.20	1,424.1	3,193.9	-64.2	28.4	-19.4	0.74	-0.65	2.50
1,521.0	6.40	157.40	1,516.4	3,101.6	-74.9	32.5	-22.1	1.55	-1.51	-3.01
1,613.0	6.60	153.80	1,607.8	3,010.2	-84.4	36.8	-25.1	0.49	0.22	-3.91

Survey Report



Company:	BONANZA CREEK ENERGY INC.	Local Co-ordinate Reference:	Well STATE PRONGHORN 44-14-29HNB
Project:	WELD COUNTY, COLORADO (NAD 83)	TVD Reference:	KB @ 4618.0usft (CADE 25)
Site:	SE SE SEC. 29 T5N R61W 6th P.M.	MD Reference:	KB @ 4618.0usft (CADE 25)
Well:	STATE PRONGHORN 44-14-29HNB	North Reference:	True
Wellbore:	JOB # 2015-006-25	Survey Calculation Method:	Minimum Curvature
Design:	FINAL SURVEYS	Database:	EDM 5000.1 Single User Db

Survey										
Measured Depth (usft)	Inclination (°)	Azimuth (°)	Vertical Depth (usft)	Subsea Depth (usft)	+N/-S (usft)	+E/-W (usft)	Vertical Section (usft)	Dogleg Rate (°/100usft)	Build Rate (°/100usft)	Turn Rate (°/100usft)
1,706.0	7.80	151.70	1,700.0	2,918.0	-94.7	42.1	-29.0	1.32	1.29	-2.26
1,797.0	8.80	154.60	1,790.1	2,827.9	-106.4	48.1	-33.2	1.19	1.10	3.19
1,890.0	8.60	154.30	1,882.0	2,736.0	-119.1	54.1	-37.5	0.22	-0.22	-0.32
1,987.0	8.10	153.40	1,978.0	2,640.0	-131.8	60.3	-42.0	0.53	-0.52	-0.93
2,082.0	8.80	164.60	2,071.9	2,546.1	-144.8	65.3	-45.1	1.88	0.74	11.79
2,178.0	8.30	163.30	2,166.9	2,451.1	-158.5	69.2	-47.1	0.56	-0.52	-1.35
2,273.0	7.50	164.50	2,261.0	2,357.0	-171.0	72.8	-49.0	0.86	-0.84	1.26
2,368.0	9.20	166.10	2,355.0	2,263.0	-184.4	76.3	-50.7	1.81	1.79	1.68
2,464.0	7.70	164.10	2,449.9	2,168.1	-198.0	79.9	-52.4	1.59	-1.56	-2.08
2,560.0	8.60	162.40	2,545.0	2,073.0	-211.0	83.8	-54.6	0.97	0.94	-1.77
2,656.0	8.20	158.90	2,639.9	1,978.1	-224.3	88.5	-57.4	0.68	-0.42	-3.65
2,751.0	7.50	154.60	2,734.0	1,884.0	-236.2	93.6	-60.8	0.96	-0.74	-4.53
2,847.0	7.90	154.30	2,829.2	1,788.8	-247.8	99.1	-64.7	0.42	0.42	-0.31
2,942.0	8.00	156.20	2,923.3	1,694.7	-259.7	104.6	-68.6	0.30	0.11	2.00
3,038.0	7.30	168.00	3,018.4	1,599.6	-271.8	108.6	-70.9	1.79	-0.73	12.29
3,134.0	8.80	161.00	3,113.5	1,504.5	-284.7	112.3	-72.7	1.86	1.56	-7.29
3,229.0	8.10	160.20	3,207.4	1,410.6	-297.9	116.9	-75.5	0.75	-0.74	-0.84
3,324.0	8.60	154.80	3,301.4	1,316.6	-310.6	122.2	-79.1	0.98	0.53	-5.68
3,420.0	8.70	153.70	3,396.3	1,221.7	-323.6	128.4	-83.5	0.20	0.10	-1.15
3,516.0	8.20	151.60	3,491.3	1,126.7	-336.1	134.9	-88.3	0.61	-0.52	-2.19
3,611.0	8.70	161.70	3,585.3	1,032.7	-348.9	140.4	-92.0	1.65	0.53	10.63
3,706.0	8.00	158.90	3,679.3	938.7	-361.9	145.0	-94.8	0.85	-0.74	-2.95
3,801.0	7.10	159.40	3,773.4	844.6	-373.6	149.5	-97.6	0.95	-0.95	0.53
3,896.0	8.20	151.30	3,867.6	750.4	-385.0	154.8	-101.3	1.62	1.16	-8.53
3,990.0	8.50	154.10	3,960.6	657.4	-397.2	161.1	-105.9	0.54	0.32	2.98
4,086.0	9.10	162.10	4,055.5	562.5	-410.8	166.5	-109.4	1.42	0.62	8.33
4,182.0	8.50	159.90	4,150.3	467.7	-424.6	171.3	-112.3	0.72	-0.62	-2.29
4,277.0	7.60	158.00	4,244.4	373.6	-437.1	176.0	-115.3	0.99	-0.95	-2.00
4,372.0	6.50	151.00	4,338.7	279.3	-447.6	181.0	-118.8	1.47	-1.16	-7.37
4,467.0	8.00	152.60	4,432.9	185.1	-458.2	186.6	-123.0	1.59	1.58	1.68
4,562.0	8.40	158.80	4,526.9	91.1	-470.5	192.2	-126.8	1.02	0.42	6.53
4,658.0	7.50	154.70	4,622.0	-4.0	-482.7	197.4	-130.3	1.11	-0.94	-4.27
4,753.0	8.00	163.70	4,716.2	-98.2	-494.7	201.9	-133.2	1.38	0.53	9.47
4,848.0	7.00	159.30	4,810.3	-192.3	-506.4	205.8	-135.5	1.21	-1.05	-4.63
4,943.0	7.50	163.30	4,904.6	-286.6	-517.8	209.6	-137.7	0.75	0.53	4.21
5,038.0	7.90	154.20	4,998.7	-380.7	-529.6	214.3	-140.7	1.35	0.42	-9.58
5,134.0	9.10	145.10	5,093.7	-475.7	-541.8	221.5	-146.2	1.87	1.25	-9.48
5,228.0	6.60	144.80	5,186.8	-568.8	-552.3	228.8	-152.1	2.66	-2.66	-0.32
5,323.0	4.00	156.60	5,281.4	-663.4	-559.8	233.3	-155.5	2.95	-2.74	12.42
5,418.0	2.10	172.40	5,376.2	-758.2	-564.5	234.9	-156.4	2.17	-2.00	16.63
5,513.0	0.80	342.30	5,471.2	-853.2	-565.6	234.9	-156.3	3.04	-1.37	178.84
KOP										
5,565.0	3.52	258.21	5,523.2	-905.2	-565.6	233.2	-154.6	6.79	5.23	-161.70
5,608.0	6.40	252.30	5,566.0	-948.0	-566.6	229.6	-150.9	6.79	6.69	-13.75
5,656.0	12.90	251.90	5,613.3	-995.3	-569.1	222.0	-143.0	13.54	13.54	-0.83
5,703.0	17.50	253.50	5,658.7	-1,040.7	-572.7	210.2	-130.9	9.83	9.79	3.40
5,751.0	22.10	255.70	5,703.8	-1,085.8	-577.0	194.5	-114.8	9.71	9.58	4.58
5,799.0	26.20	257.70	5,747.6	-1,129.6	-581.5	175.4	-95.2	8.71	8.54	4.17
5,847.0	32.20	267.70	5,789.5	-1,171.5	-584.3	152.3	-71.9	16.07	12.50	20.83
5,894.0	38.20	272.60	5,827.9	-1,209.9	-584.1	125.2	-45.1	14.10	12.77	10.43
5,942.0	41.90	274.60	5,864.6	-1,246.6	-582.2	94.4	-14.8	8.16	7.71	4.17
5,989.0	48.00	274.80	5,897.9	-1,279.9	-579.4	61.3	17.6	12.98	12.98	0.43
6,037.0	52.00	274.30	5,928.7	-1,310.7	-576.5	24.7	53.5	8.37	8.33	-1.04

Survey Report



Company:	BONANZA CREEK ENERGY INC.	Local Co-ordinate Reference:	Well STATE PRONGHORN 44-14-29HNB
Project:	WELD COUNTY, COLORADO (NAD 83)	TVD Reference:	KB @ 4618.0usft (CADE 25)
Site:	SE SE SEC. 29 T5N R61W 6th P.M.	MD Reference:	KB @ 4618.0usft (CADE 25)
Well:	STATE PRONGHORN 44-14-29HNB	North Reference:	True
Wellbore:	JOB # 2015-006-25	Survey Calculation Method:	Minimum Curvature
Design:	FINAL SURVEYS	Database:	EDM 5000.1 Single User Db

Survey

Measured Depth (usft)	Inclination (°)	Azimuth (°)	Vertical Depth (usft)	Subsea Depth (usft)	+N/-S (usft)	+E/-W (usft)	Vertical Section (usft)	Dogleg Rate (°/100usft)	Build Rate (°/100usft)	Turn Rate (°/100usft)
6,084.0	57.50	272.50	5,955.9	-1,337.9	-574.3	-13.6	91.1	12.11	11.70	-3.83
6,132.0	62.30	273.20	5,979.9	-1,361.9	-572.2	-55.1	131.9	10.08	10.00	1.46
6,180.0	65.90	276.10	6,000.9	-1,382.9	-568.7	-98.1	174.1	9.26	7.50	6.04
6,228.0	72.00	274.80	6,018.1	-1,400.1	-564.4	-142.7	217.7	12.96	12.71	-2.71
6,275.0	79.30	270.50	6,029.8	-1,411.8	-562.4	-188.1	262.4	17.88	15.53	-9.15
START OF TANGENT										
6,280.0	79.55	270.45	6,030.7	-1,412.7	-562.3	-193.1	267.3	5.10	5.00	-1.05
6,323.0	81.70	270.00	6,037.7	-1,419.7	-562.2	-235.5	309.3	5.10	5.00	-1.04
END OF TANGENT										
6,365.0	83.34	269.54	6,043.2	-1,425.2	-562.3	-277.1	350.6	4.06	3.91	-1.09
6,369.0	83.50	269.50	6,043.6	-1,425.6	-562.4	-281.1	354.5	4.06	3.91	-1.08
ICP										
6,421.0	86.10	269.60	6,048.3	-1,430.3	-562.8	-332.9	405.9	5.00	5.00	0.20
6,469.0	88.50	269.70	6,050.6	-1,432.6	-563.1	-380.8	453.4	5.00	5.00	0.20
6,531.0	88.60	268.60	6,052.2	-1,434.2	-564.0	-442.8	515.0	1.78	0.16	-1.77
6,623.0	88.90	267.50	6,054.2	-1,436.2	-567.1	-534.7	606.5	1.24	0.33	-1.20
6,715.0	89.80	268.00	6,055.2	-1,437.2	-570.7	-626.6	698.0	1.12	0.98	0.54
6,808.0	90.00	268.10	6,055.4	-1,437.4	-573.9	-719.6	790.5	0.24	0.22	0.11
6,904.0	89.40	268.30	6,055.9	-1,437.9	-576.9	-815.5	886.0	0.66	-0.62	0.21
6,999.0	88.30	268.80	6,057.8	-1,439.8	-579.3	-910.5	980.4	1.27	-1.16	0.53
7,093.0	87.00	266.20	6,061.6	-1,443.6	-583.4	-1,004.3	1,073.9	3.09	-1.38	-2.77
7,188.0	90.30	266.90	6,063.9	-1,445.9	-589.1	-1,099.1	1,168.6	3.55	3.47	0.74
7,284.0	91.70	268.30	6,062.2	-1,444.2	-593.1	-1,195.0	1,264.2	2.06	1.46	1.46
7,380.0	91.50	270.20	6,059.5	-1,441.5	-594.4	-1,290.9	1,359.4	1.99	-0.21	1.98
7,475.0	90.90	271.20	6,057.5	-1,439.5	-593.2	-1,385.9	1,453.4	1.23	-0.63	1.05
7,571.0	90.60	272.10	6,056.3	-1,438.3	-590.5	-1,481.9	1,548.1	0.99	-0.31	0.94
7,666.0	88.60	271.80	6,056.9	-1,438.9	-587.2	-1,576.8	1,641.7	2.13	-2.11	-0.32
7,762.0	89.80	272.40	6,058.3	-1,440.3	-583.7	-1,672.7	1,736.3	1.40	1.25	0.62
7,856.0	88.90	270.90	6,059.3	-1,441.3	-581.0	-1,766.7	1,829.0	1.86	-0.96	-1.60
7,950.0	89.50	270.30	6,060.7	-1,442.7	-580.0	-1,860.7	1,922.0	0.90	0.64	-0.64
8,045.0	90.20	271.10	6,060.9	-1,442.9	-578.9	-1,955.6	2,015.9	1.12	0.74	0.84
8,141.0	90.20	271.00	6,060.6	-1,442.6	-577.1	-2,051.6	2,110.8	0.10	0.00	-0.10
8,237.0	88.30	269.50	6,061.8	-1,443.8	-576.7	-2,147.6	2,205.9	2.52	-1.98	-1.56
8,331.0	88.40	268.90	6,064.5	-1,446.5	-578.0	-2,241.6	2,299.1	0.65	0.11	-0.64
8,426.0	90.50	268.40	6,065.4	-1,447.4	-580.2	-2,336.5	2,393.5	2.27	2.21	-0.53
8,521.0	89.50	266.80	6,065.4	-1,447.4	-584.2	-2,431.4	2,488.1	1.99	-1.05	-1.68
8,617.0	91.70	267.60	6,064.4	-1,446.4	-588.9	-2,527.3	2,583.7	2.44	2.29	0.83
8,713.0	91.40	268.90	6,061.8	-1,443.8	-591.8	-2,623.2	2,679.2	1.39	-0.31	1.35
8,809.0	91.20	270.10	6,059.7	-1,441.7	-592.7	-2,719.2	2,774.4	1.27	-0.21	1.25
8,905.0	90.80	271.00	6,058.0	-1,440.0	-591.7	-2,815.2	2,869.3	1.03	-0.42	0.94
9,001.0	90.80	271.30	6,056.6	-1,438.6	-589.8	-2,911.2	2,964.2	0.31	0.00	0.31
9,096.0	89.70	272.30	6,056.2	-1,438.2	-586.8	-3,006.1	3,057.8	1.56	-1.16	1.05
9,192.0	89.40	272.40	6,057.0	-1,439.0	-582.9	-3,102.0	3,152.3	0.33	-0.31	0.10
9,286.0	90.40	272.50	6,057.2	-1,439.2	-578.9	-3,195.9	3,244.8	1.07	1.06	0.11
9,382.0	91.90	272.50	6,055.2	-1,437.2	-574.7	-3,291.8	3,339.3	1.56	1.56	0.00
9,477.0	90.40	269.50	6,053.3	-1,435.3	-573.0	-3,386.8	3,433.1	3.53	-1.58	-3.16
9,573.0	88.90	266.60	6,053.9	-1,435.9	-576.3	-3,482.7	3,528.6	3.40	-1.56	-3.02
9,667.0	89.20	266.10	6,055.5	-1,437.5	-582.3	-3,576.5	3,622.4	0.62	0.32	-0.53
9,761.0	88.80	265.40	6,057.1	-1,439.1	-589.2	-3,670.2	3,716.2	0.86	-0.43	-0.74
9,856.0	90.40	267.60	6,057.8	-1,439.8	-595.0	-3,765.0	3,810.9	2.86	1.68	2.32
9,951.0	91.50	267.80	6,056.2	-1,438.2	-598.9	-3,859.9	3,905.5	1.18	1.16	0.21
10,046.0	90.60	268.90	6,054.5	-1,436.5	-601.6	-3,954.9	3,999.9	1.50	-0.95	1.16
10,142.0	89.40	268.90	6,054.5	-1,436.5	-603.4	-4,050.9	4,095.3	1.25	-1.25	0.00

Survey Report



Company:	BONANZA CREEK ENERGY INC.	Local Co-ordinate Reference:	Well STATE PRONGHORN 44-14-29HNB
Project:	WELD COUNTY, COLORADO (NAD 83)	TVD Reference:	KB @ 4618.0usft (CADE 25)
Site:	SE SE SEC. 29 T5N R61W 6th P.M.	MD Reference:	KB @ 4618.0usft (CADE 25)
Well:	STATE PRONGHORN 44-14-29HNB	North Reference:	True
Wellbore:	JOB # 2015-006-25	Survey Calculation Method:	Minimum Curvature
Design:	FINAL SURVEYS	Database:	EDM 5000.1 Single User Db

Survey										
Measured Depth (usft)	Inclination (°)	Azimuth (°)	Vertical Depth (usft)	Subsea Depth (usft)	+N/-S (usft)	+E/-W (usft)	Vertical Section (usft)	Dogleg Rate (°/100usft)	Build Rate (°/100usft)	Turn Rate (°/100usft)
10,237.0	89.40	268.60	6,055.4	-1,437.4	-605.5	-4,145.8	4,189.6	0.32	0.00	-0.32
10,332.0	89.00	267.50	6,056.8	-1,438.8	-608.7	-4,240.8	4,284.1	1.23	-0.42	-1.16
10,426.0	89.90	269.20	6,057.7	-1,439.7	-611.4	-4,334.7	4,377.6	2.05	0.96	1.81
LAST SURVEY - FEB 10, 2015										
10,507.0	90.00	268.80	6,057.7	-1,439.7	-612.9	-4,415.7	4,458.0	0.51	0.12	-0.49
EXTRAPOLATION TO TD										
10,574.0	90.00	268.80	6,057.7	-1,439.7	-614.3	-4,482.7	4,524.6	0.00	0.00	0.00

Targets										
Target Name	Dip Angle (°)	Dip Dir. (°)	TVD (usft)	+N/-S (usft)	+E/-W (usft)	Northing (usft)	Easting (usft)	Latitude	Longitude	
KOP - STATE PRONGHORN	0.00	0.00	5,558.7	-571.2	237.3	1,378,880.39	3,355,643.81	40.366402	-104.223638	
- survey misses target center by 8.4usft at 5600.2usft MD (5558.2 TVD, -566.4 N, 230.4 E)										
- Point										
ABDN VERT STATE PRONGHORN	0.00	0.00	7,018.0	629.2	-633.6	1,380,068.05	3,354,755.73	40.369697	-104.226764	
- survey misses target center by 1538.1usft at 6685.8usft MD (6055.0 TVD, -569.7 N, -597.5 E)										
- Circle (radius 30.0)										
BHL - STATE PRONGHORN	0.00	0.00	6,062.0	-611.6	-4,483.6	1,378,772.06	3,350,924.13	40.366290	-104.240580	
- survey misses target center by 5.1usft at 10574.0usft MD (6057.7 TVD, -614.3 N, -4482.7 E)										
- Point										
7" ICP *NEW* - STATE PRONGHORN	0.00	0.00	6,062.0	-576.1	-336.7	1,378,867.23	3,355,069.96	40.366389	-104.225698	
- survey misses target center by 18.9usft at 6425.5usft MD (6048.6 TVD, -562.8 N, -337.4 E)										
- Point										

Survey Annotations					
Measured Depth (usft)	Vertical Depth (usft)	Local Coordinates		Comment	
		+N/-S (usft)	+E/-W (usft)		
780.0	780.0	-4.8	2.3	SURFACE CASING	
5,565.0	5,523.2	-565.6	233.2	KOP	
6,280.0	6,030.7	-562.3	-193.1	START OF TANGENT	
6,365.0	6,043.2	-562.3	-277.1	END OF TANGENT	
6,421.0	6,048.3	-562.8	-332.9	ICP	
10,507.0	6,057.7	-612.9	-4,415.7	LAST SURVEY - FEB 10, 2015	
10,574.0	6,057.7	-614.3	-4,482.7	EXTRAPOLATION TO TD	

Checked By: _____ Approved By: _____ Date: _____