



Scale: 5" / 100'
Measured Depth Log

Well Name Mojack L-28-HN

Location SEC. 28-T7N-R64W

State COLORADO

County WELD

Country USA

Rig Number FRONTIER 8

API Number 051233983500

Field WATTENBERG

Region DJ BASIN

Drilling Completed 11/24/2014

Spud Date 10/25/2014

Surface Coordinates 230°FNL 1725°FEL

Bottom Hole Coordinates 465°FSL 1522°FEL

Ground Elevation 4900

K.B. Elevation 4922.5

Logged Interval 6000' MD To 11601' MD

Total Depth 11601' MD

Formation NIOBRARA

Type of Drilling Fluid FWLSND

Operator

Company BAYSWATER EXPLORATION AND PRODUCTION

Address 730 17th Street, Suite 610
Denver, CO 80202

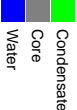
Geologist

Name ROBERT DAVIS, LISA KANT

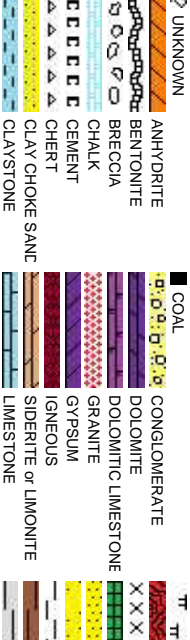
Company COLUMBINE LOGGING INC.

Address 602 S. Lipan St
Denver, CO 80223

Zone Color Code



Rock Type



Accessories

Fossils

	GASTROPOD		ARGILLITE GRAIN		HEAVY MINERAL
	INOCERAMUS		B BENTONITE		K KAOLIN
	ALGAE		BITUMENOUS SUBSTANCE		M MARCASITE
	AMPHIPORA		BRECCIA FRAGMENTS		TT MARLSTONE
	OSTRACOD		CALCAREOUS		MC MICACEOUS
	BELEMNITE		CARBONACEOUS FLAKES		MC MINERAL CRYSTALS
	BIOCLASTIC		CHERT		N NODULES
	BRACHIOPOD		COAL - THIN BEDS		PP PHOSPHATE PELLETS
	PISOLUTE		CHERT		P PYRITE
	BRYOZOA		DOLOMITIC		B SALT CAST
	CEPHALOPOD		FELDSPAR		S SANDY
	CORAL		FERRUGINOUS PELLET		S SIDERITE
	CRINOID		FERRUGINOUS		S SILICEOUS
	ECHINOID		GLAUCONITE		SL SILTY
	FISH		GYPSEFEROUS		T TUFFACEOUS
	FORAMINIFERA				
	F FOSSIL				

Stringer

	ANHYDRITE STRINGER
	BENTONITE STRINGER
	COAL STRINGER
	DOLOMITE STRINGER
	GYPSEUM STRINGER
	LIMESTONE STRINGER
	MARLSTONE (CALC) STRG
	MARLSTONE (DOL) STRG
	SANDSTONE STRINGER
	SHALE STRINGER
	SILTSTONE STRINGER

Other Symbols

Oil Show

	P PINPOINT
	V VUGGY

Engineering

	D DEAD
	E EVEN
	Q QUESTIONABLE
	BIT
	SPOTTED STAINING
	CONNECTION (UP)

Rounding

	DST INTERVAL		E EARTHY
	FAULT		FX FINELYXLN
	FORMATION TOP		DS DRILL STEM TEST
	GAS SHOW		MN DEPTH
	OIL SHOW		L LITHOGRAPHIC
			MX MICROXLN
	MN DEPTH UP		MS MUDSTONE

Porosity

	CONNECTION (DOWN)		A ANGULAR
	CONNECTION GAS		R ROUNDED
	CONNECTION GAS (LEFT)		B SUBANG
	TRIP GAS		TR SUBRAND
	TRIP GAS (LEFT)		
	CASING		
	NORMAL FAULT		
	OVERTURNED STRATA		
	REVERSE FAULT		

Textures

	INTERCRYSTALLINE		SIDEWALL CORE (LEFT)
	INTEREOLITIC		SIDEWALL CORE (RIGHT)
	MOLDIC		SLIDE
	ORGANIC		B3 BOUNDSTONE
			C CHALKY
			CX CRYPTOXLN

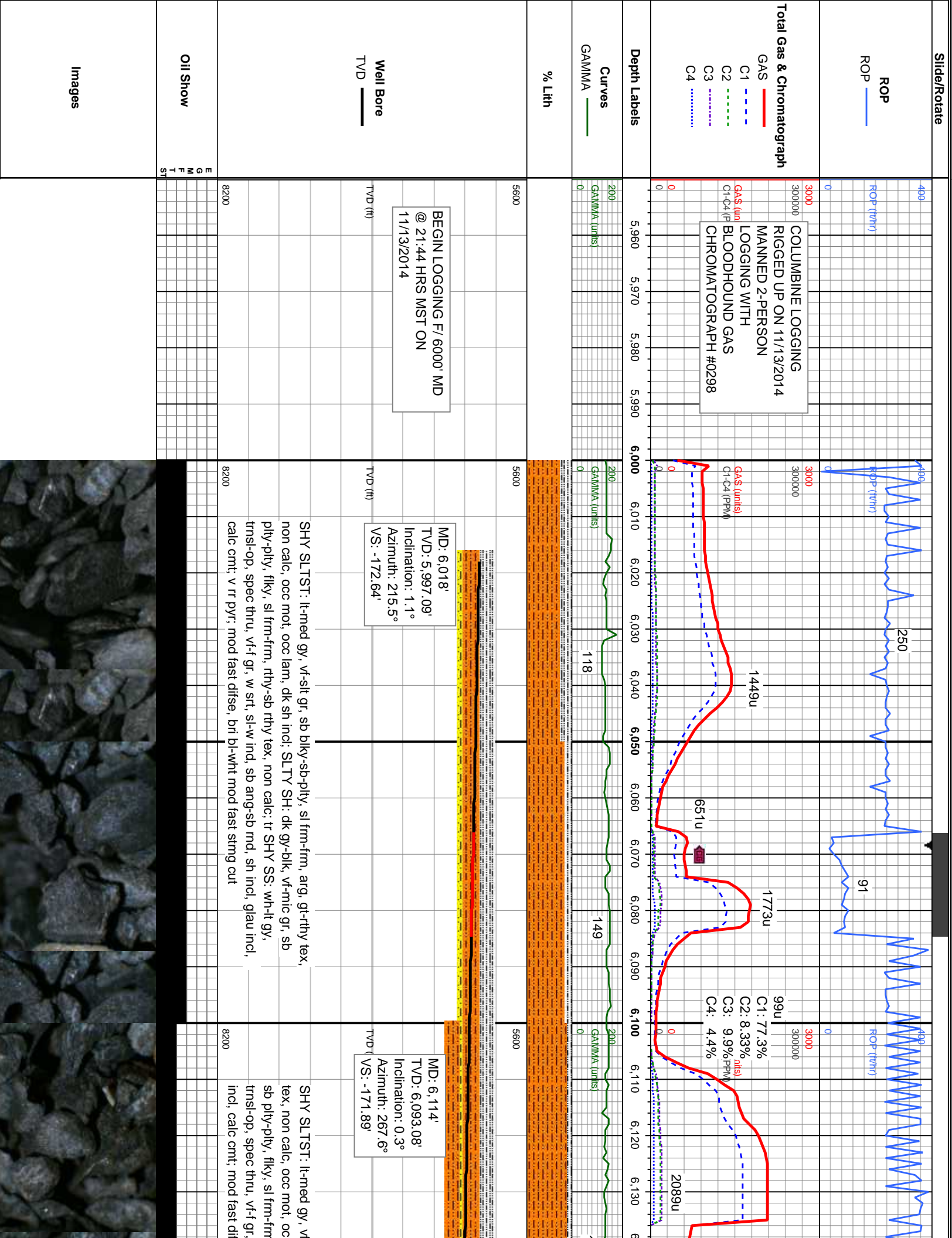
Sorting

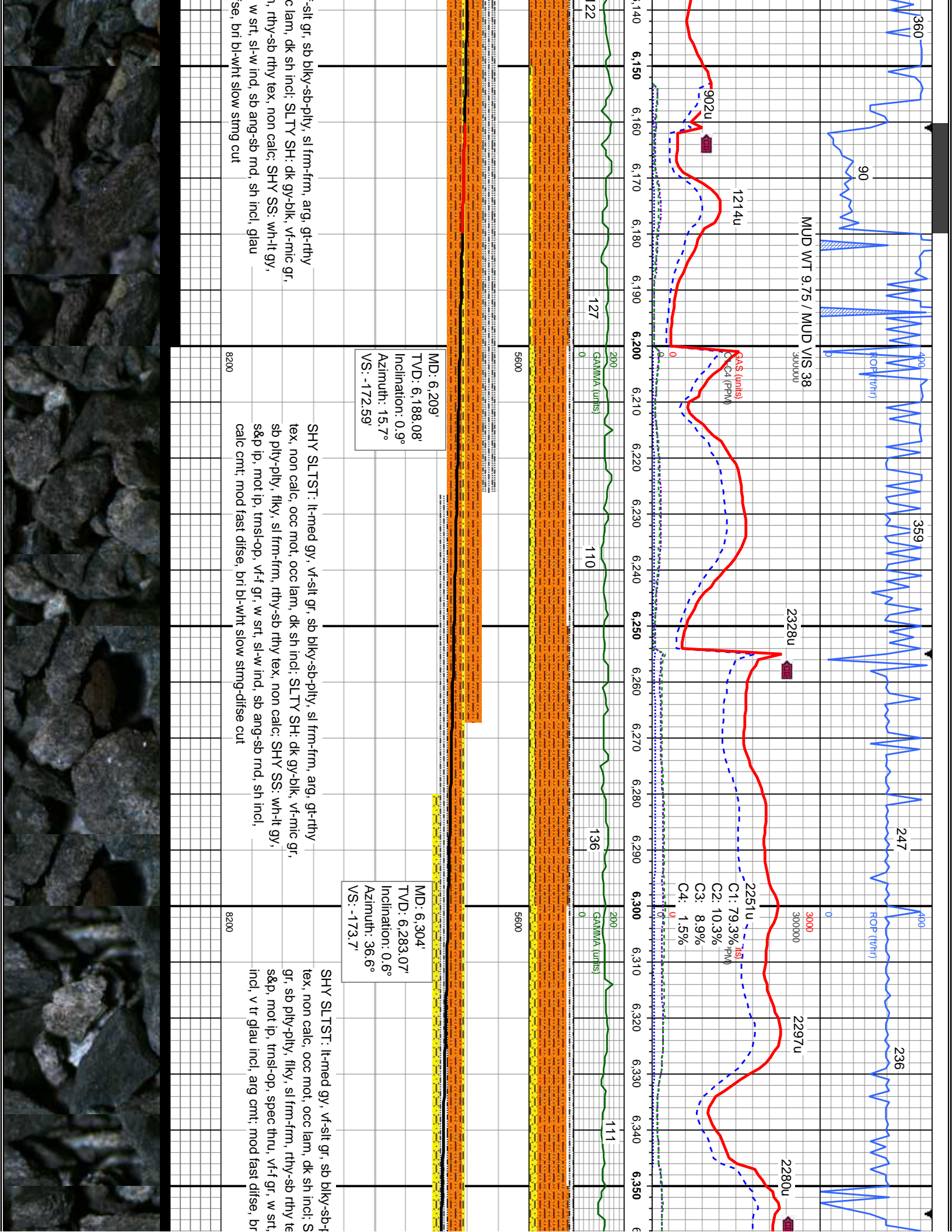
	P POOR
	M MODERATE
	W WELL

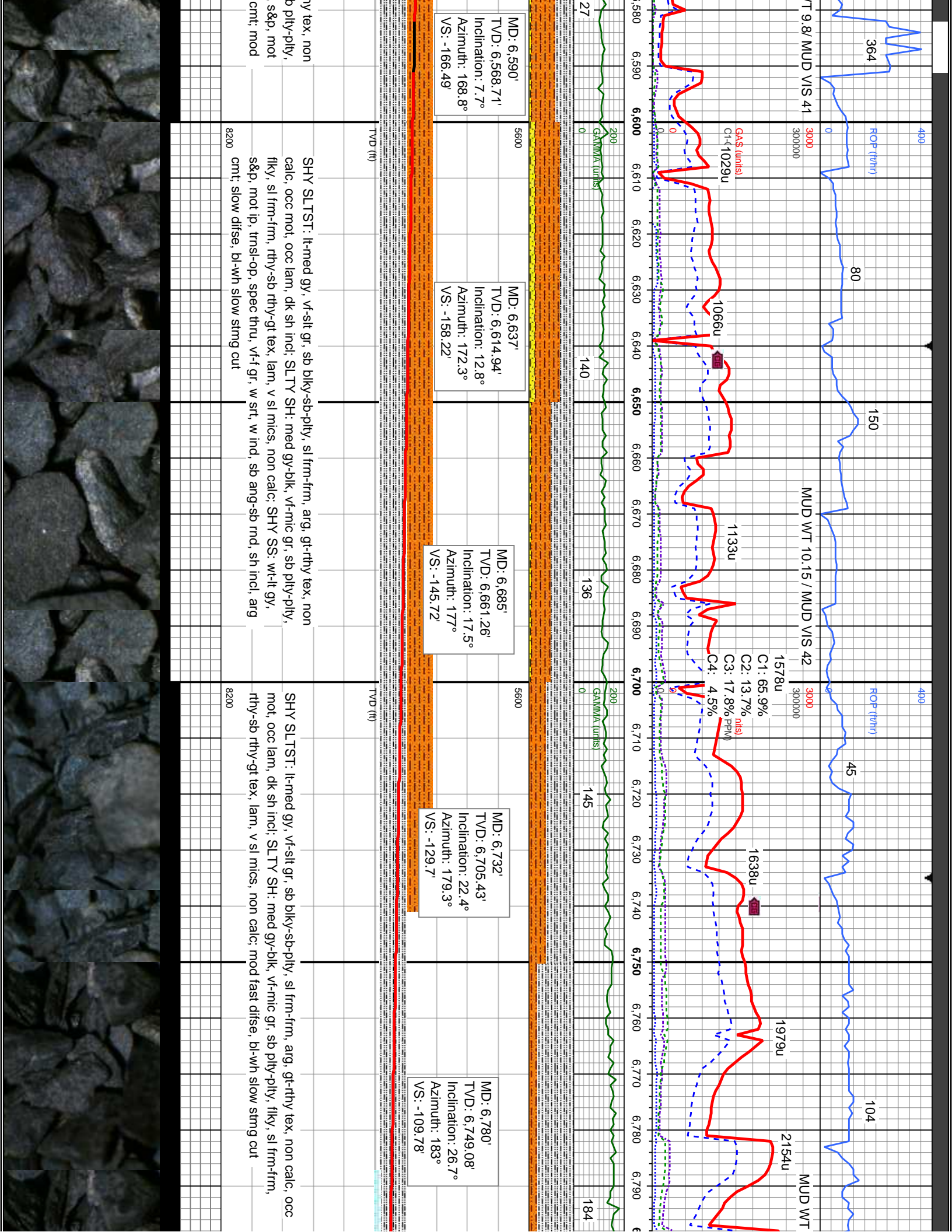
ding

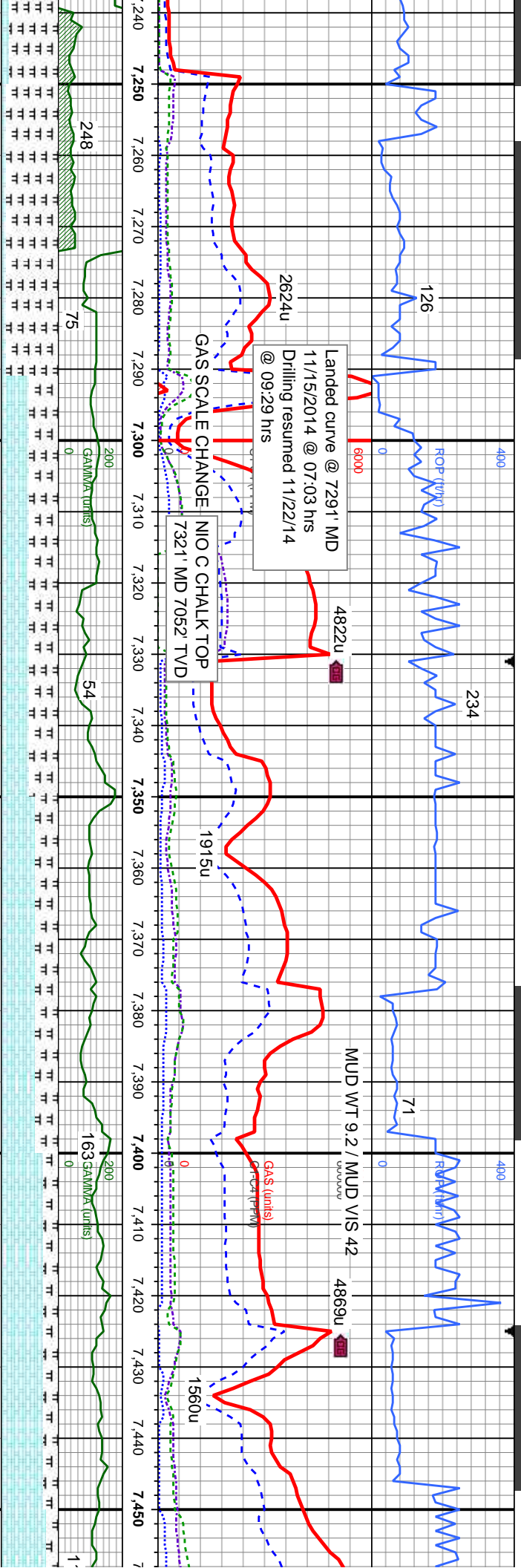


	MARLSTONE		SHALY SANDSTONE
	METAMORPHIC		SHALY SILTSTONE
	NO SAMPLE		SILTY SHALE
	SALT		SILTSTONE
	SANDSTONE		TILL
	SALT-PEPPER SANC		TUFF
	SHALE		WELDED TUFF
	SHALE COLORED		
	SHALE GRAY		



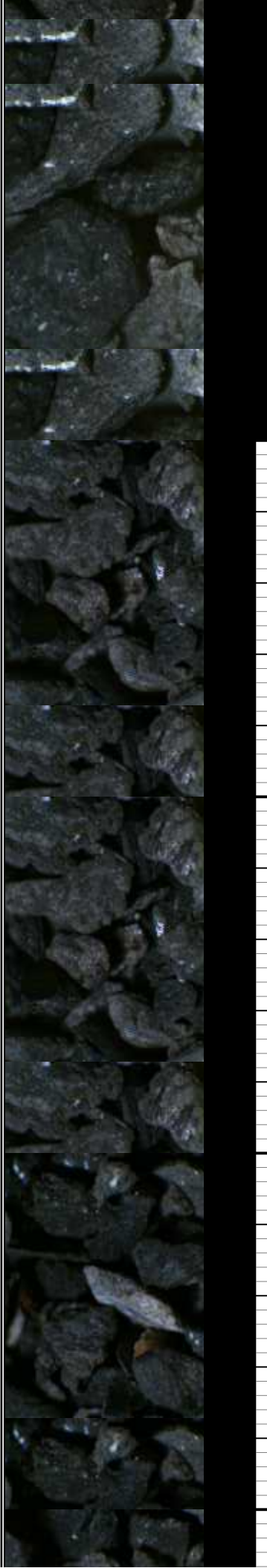


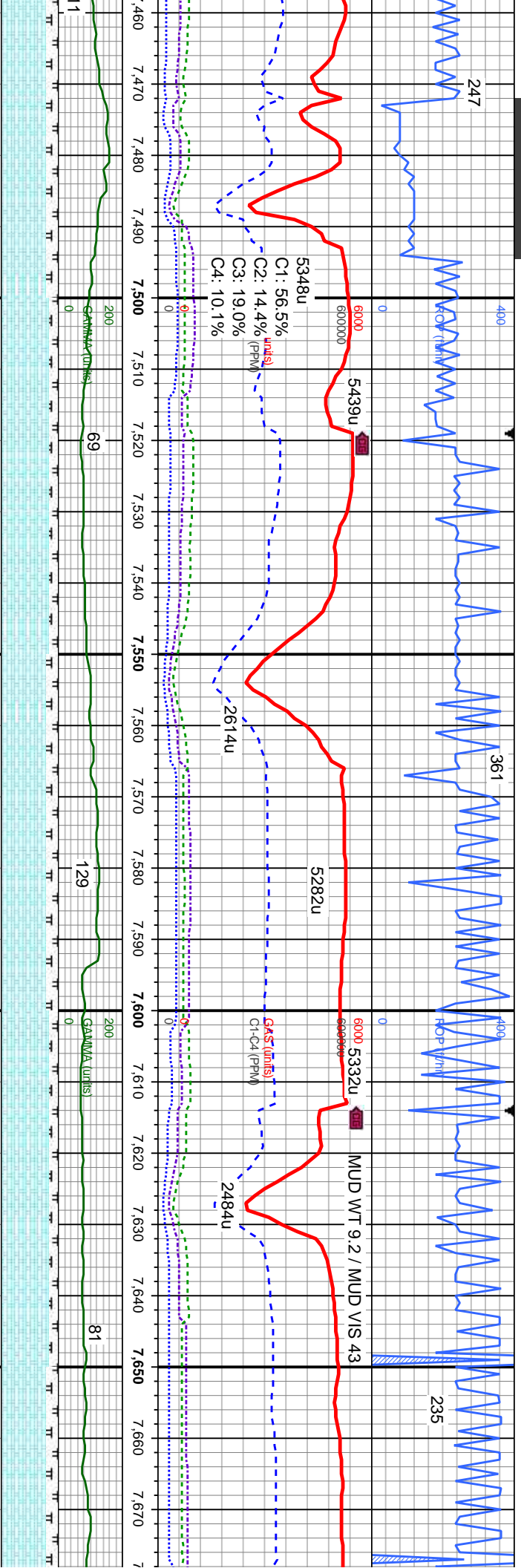




7,241'	MD: 7,291'	MD: 7,322'	MD: 7,370'	MD: 7,417'	MI
7,034.17'	TVD: 7,044.82'	TVD: 7,051.98'	TVD: 7,060.85'	TVD: 7,067.96'	TV
Inclination: 75.4°	Inclination: 80°	Inclination: 79.2°	Inclination: 79.5°	Inclination: 83.1°	In
Azimuth: 182.1°	Azimuth: 182.1°	Azimuth: 182.9°	Azimuth: 182.5°	Azimuth: 182°	Az
VS: 332.88'	VS: 281.65'	VS: 311.75'	VS: 358.83'	VS: 405.22'	VS

offwht, sb	med gy-blk, frm, brit, gt tex, lam, sb	It gy-med gy, occ tan-crm, sb	It gy-med gy, occ tan-crm, sb	It gy-med gy, occ tan-crm, sb	CHK: med gy-blk, frm, brit, gt tex, lam, sb
ply, vf gr, CHK: It gy-med gy, occ offwht, sb	ply, vf gr, CHK: It gy-med gy, occ offwht, sb	ply, vf gr, CHK: It gy-med gy, occ offwht, sb	ply, vf gr, CHK: It gy-med gy, occ offwht, sb	ply, vf gr, CHK: It gy-med gy, occ offwht, sb	ply, vf gr, CHK: It gy-med gy, occ offwht, sb
blky-blky, sft-sl frm, mot tex, str, calc, com	blky-blky, sft-sl frm, mot tex, str, calc, com	blky-blky, sft-sl frm, mot tex, calc, MRLST: med gy, frm, brit, gt tex, lam, sb ply, rr	blky-blky, sft-sl frm, mot tex, calc, MRLST: med gy, frm, brit, gt tex, lam, sb ply, rr	blky-blky, sft-sl frm, mot tex, calc, MRLST: med gy, frm, brit, gt tex, lam, sb ply, rr	blky-blky, sft-sl frm, mot tex, calc, MRLST: med gy, frm, brit, gt tex, lam, sb ply, rr
foss frags; v fast difse; bri bl-wht mod	foss frags; v fast difse; bri bl-wht mod	bent, cal fos; v fast difse; bri bl-wht sl	bent, cal fos; v fast difse; bri bl-wht sl	bent, cal fos; v fast difse; bri bl-wht sl	bent, cal fos; v fast difse; bri bl-wht sl
stimg-nilky cut	stimg-nilky cut	stimg cut	stimg cut	stimg cut	stimg cut





D: 7.464'
ID: 7.072.26'
Inclination: 86.4°
Azimuth: 182°
VS: 451.96'

MD: 7.511'
TVD: 7.074.27'
Inclination: 88.7°
Azimuth: 181.8°
VS: 498.86'

MD: 7.558'
TVD: 7.074.96'
Inclination: 89.6°
Azimuth: 181.4°
VS: 545.81'

MD: 7.653'
TVD: 7.075.29'
Inclination: 90°
Azimuth: 181.1°
VS: 640.75'

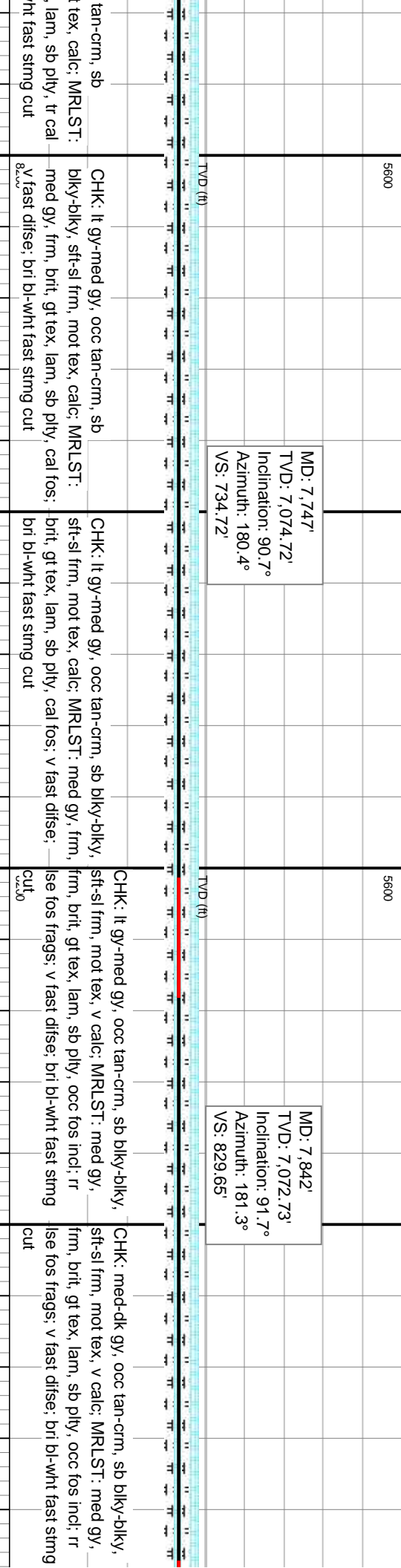
It gy-med gy, occ tan-crm, sb
biky-sft-si frm, mot tex, calc; MRLST:
med gy, frm, brt, gt tex, lam, sb ply, tr cal
fos; v fast difse; bri bl-wht sl sting cut

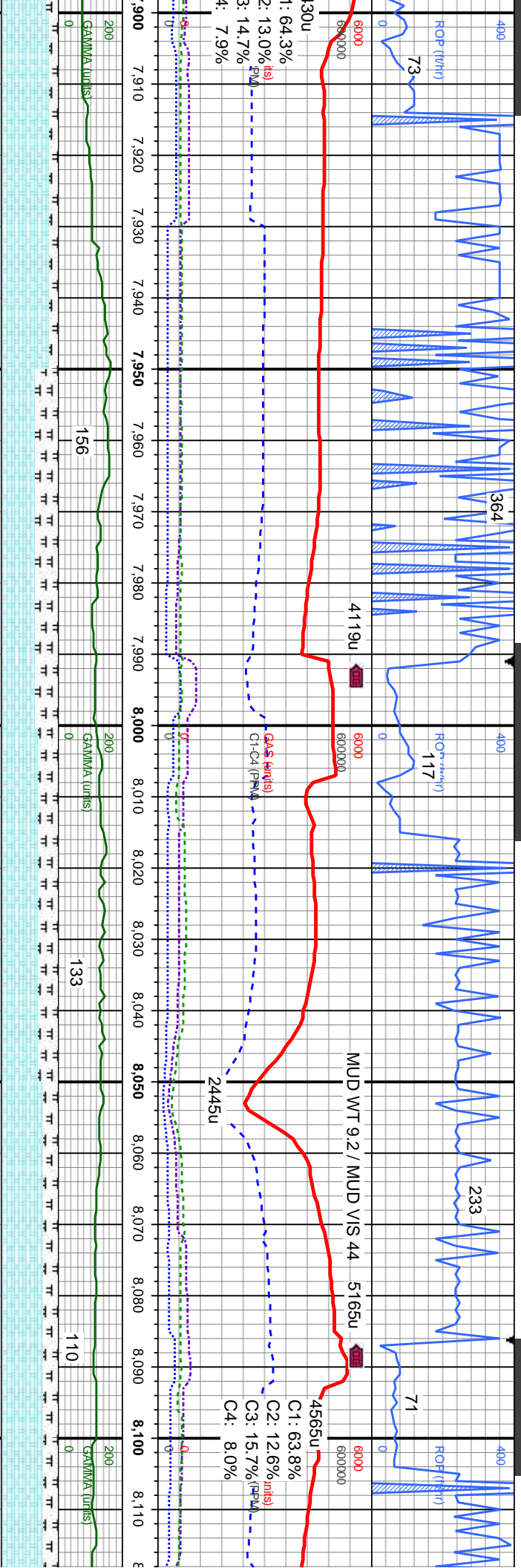
CHK: It gy-med gy, occ tan-crm, sb
biky-biky, sft-si frm, mot tex, calc; MRLST:
med gy, frm, brt, gt tex, lam, sb ply, tr cal
fos; v fast difse; bri bl-wht sl-mod sting cut

CHK: It gy-med gy, occ tan-crm, sb
biky-biky, sft-si frm, mot tex, calc; MRLST: med gy,
frm, brt, gt tex, lam, sb ply, tr cal fos; v fast
difse; bri bl-wht sl-mod sting cut

CHK: It gy-med gy, occ tan-crm, sb
biky-biky, sft-si frm, mot tex, calc; MRLST:
med gy, frm, brt, gt tex, lam, sb ply, tr cal
fos; v fast difse; bri bl-wht fast sting cut





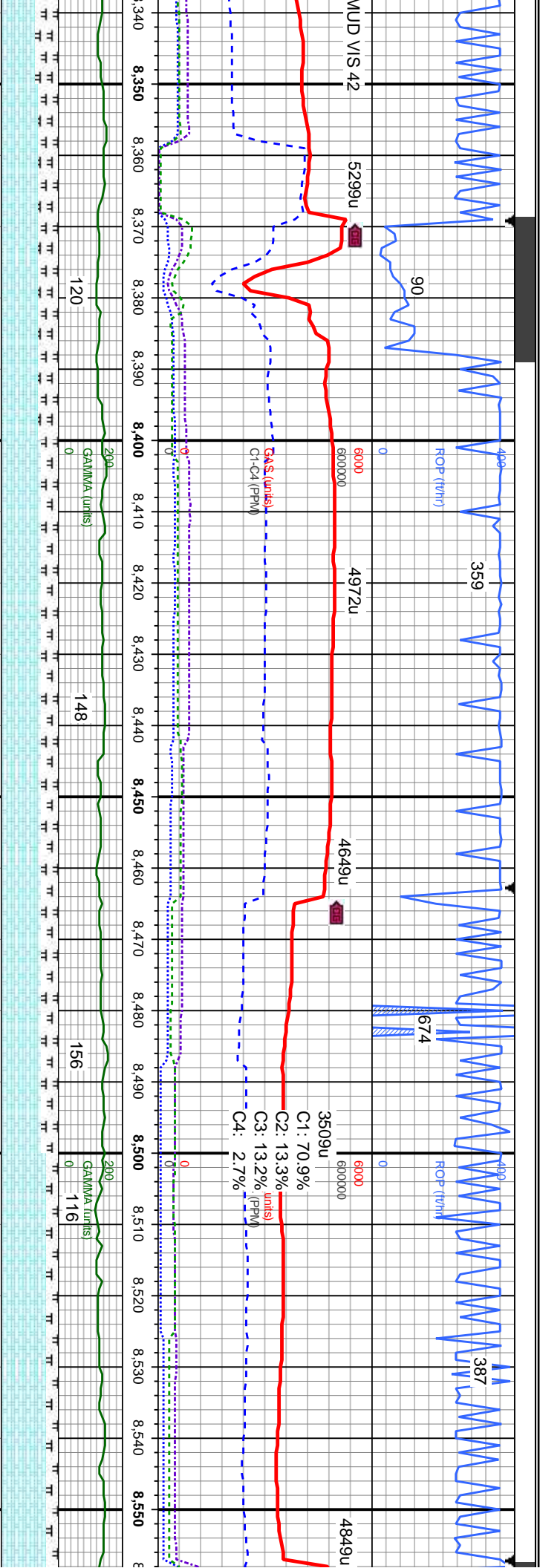


MD: 7,936'
TVD: 7,069.53'
Inclination: 92.2°
Azimuth: 182.9°
VS: 923.48'

MD: 8,030'
TVD: 7,066.5'
Inclination: 91.5°
Azimuth: 182.5°
VS: 1,017.25'

MD: 8,030'
TVD: 7,066.5'
Inclination: 91.5°
Azimuth: 182.5°
VS: 1,017.25'

CHK: med-dk gy, occ tan-crm, sb blk-y-biky, sft-sl frm, mot tex, v calc; MRLST: med gy, frm, brt, gt tex, lam, sb ply, occ fos incl; rr lse fos frags; v fast difse; bri bl-wht sl-mod stmg cut	CHK: med-dk gy, occ tan-crm, sb blk-y-biky, sft-sl frm, mot tex, v calc; MRLST: dk gy-bik, frm, brt, gt tex, lam, sb ply, occ fos incl; rr lse fos frags; v fast difse; bri bl-wht sl-mod stmg cut	CHK: med-dk gy, occ tan-crm, sb blk-y-biky, sft-sl frm, mot tex, v calc; MRLST: dk gy-bik, frm, brt, gt tex, lam, sb ply, occ fos incl; rr lse fos frags; v fast difse; bri bl-wht sl-mod stmg cut	CHK: med-dk gy, occ tan-crm, sb blk-y-biky, sft-sl frm, mot tex, v calc; MRLST: dk gy-bik, frm, brt, gt tex, lam, sb ply, occ fos incl; rr lse fos frags; v fast difse; bri bl-wht sl-mod stmg cut	CHK: med-dk gy, occ tan-crm, sb blk-y-biky, sft-sl frm, mot tex, v calc; MRLST: dk gy-bik, frm, brt, gt tex, lam, sb ply, occ fos incl; rr lse fos frags; v fast difse; bri bl-wht sl-mod stmg cut
---	--	--	--	--

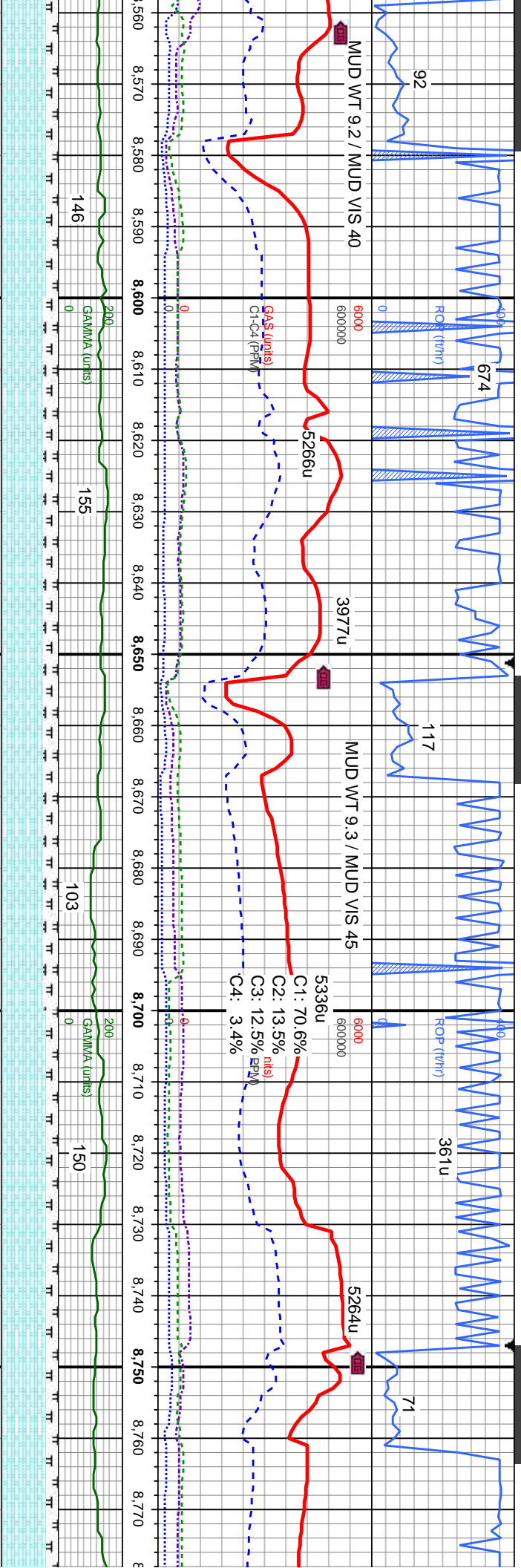


MD: 8,408'
TVD: 7,060.98'
Inclination: 89.8°
Azimuth: 185.7°
VS: 1,393.39'

MD: 8,502'
TVD: 7,059.91'
Inclination: 91.5°
Azimuth: 186.5°
VS: 1,486.7'

CHK: med-dk gy, sb blk-y-bkly, sft-sl frm, mot-str tex, v calc; MRLST: dk gy-bk, frm, brit, gt-arg tex, lam, sb pty, occ fos inci; tr lse fos frags, v rr lse pyr; v fast difse; bri slow-mod string cut	CHK: med-dk gy, sb blk-y-bkly, sft-sl frm, mot-str tex, v calc; MRLST: dk gy-bk, frm, brit, gt-arg tex, lam, sb pty, occ fos inci; com lse fos frags, v rr lse pyr; v fast difse; bri bl-wht slow-mod string cut	CHK: med-dk gy, sb blk-y-bkly, sft-sl frm, mot-str tex, v calc; MRLST: dk gy-bk, frm, brit, gt-arg tex, lam, sb pty, occ fos inci; com lse fos frags, v rr lse pyr; v fast difse; bri bl-wht slow-mod string cut	CHK: med-dk gy, sb blk-y-bkly, sft-sl frm, mot-str tex, v calc; MRLST: dk gy-bk, frm, brit, gt-arg tex, lam, sb pty, occ fos inci; tr lse fos frags, v rr lse pyr; v fast difse; bri slow-mod string cut	CHK: med-dk gy, sb blk-y-bkly, sft-sl frm, mot-str tex, v calc; MRLST: dk gy-bk, frm, brit, gt-arg tex, lam, sb pty, occ fos inci; tr lse fos frags, v rr lse pyr; v fast difse; bri slow-mod string cut
--	--	--	--	--





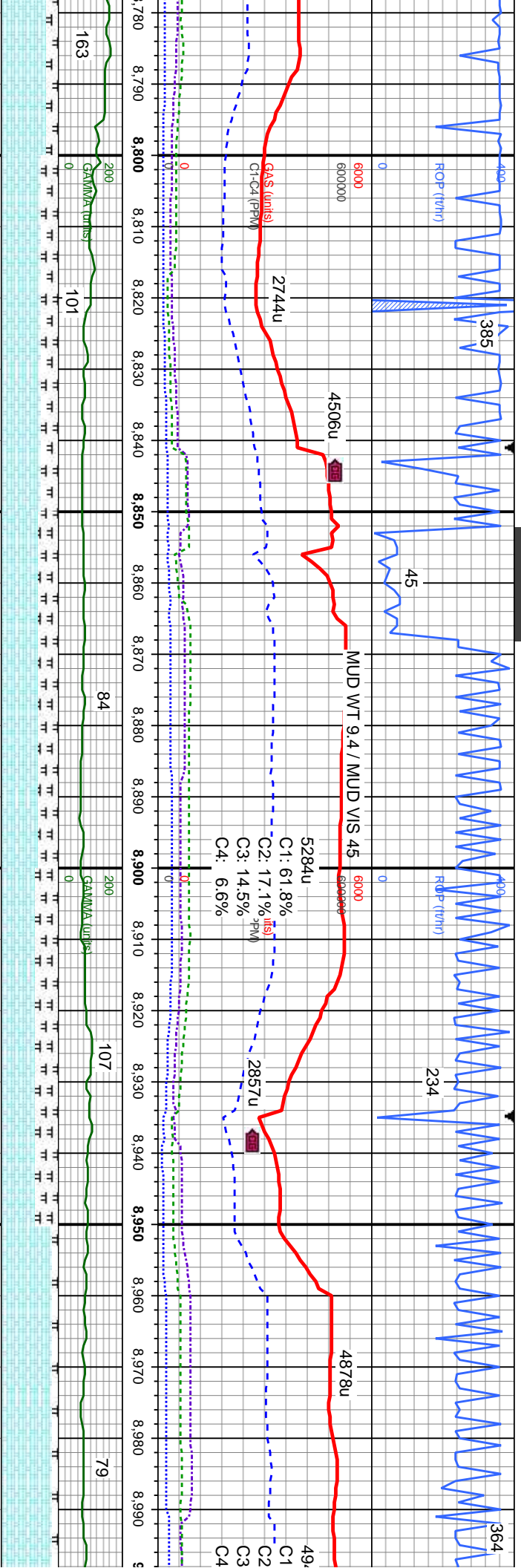
MD: 8,596'
TVD: 7,059.01'
Inclination: 89.6°
Azimuth: 185.1°
VS: 1,580.06'

MD: 8,691'
TVD: 7,059.92'
Inclination: 89.3°
Azimuth: 183.6°
VS: 1,674.67'

med-dk gy, sb blk-y-bkly, sft-sl frm, mot-str tex, v calc; MRLST: dk gy-blk, frm, brit, gt-aag tex, lam, sb pily, occ fos inci; tr lse fos frags; v fast difse; bri bl-wht mod stmg-milky cut	CHK: med-dk gy, sb blk-y-bkly, sft-sl frm, mot-str tex, v calc; MRLST: dk gy-blk, frm, brit, gt-aag tex, lam, sb pily, occ fos inci; tr lse fos frags; v fast difse; bri bl-wht mod stmg-milky cut	CHK: med-dk gy, sb blk-y-bkly, sft-sl frm, mot-str tex, v calc; MRLST: dk gy-blk, frm, brit, gt-aag tex, lam, sb pily, occ fos inci; tr lse fos frags; v fast difse; bri bl-wht mod stmg-milky cut	CHK: med-dk gy, sb blk-y-bkly, sft-sl frm, mot-str tex, v calc; MRLST: dk gy-blk, frm, brit, gt-aag tex, lam, sb pily, occ fos inci; tr lse fos frags; v fast difse; bri bl-wht mod stmg-milky cut
---	--	--	--



M
T
In
A
V



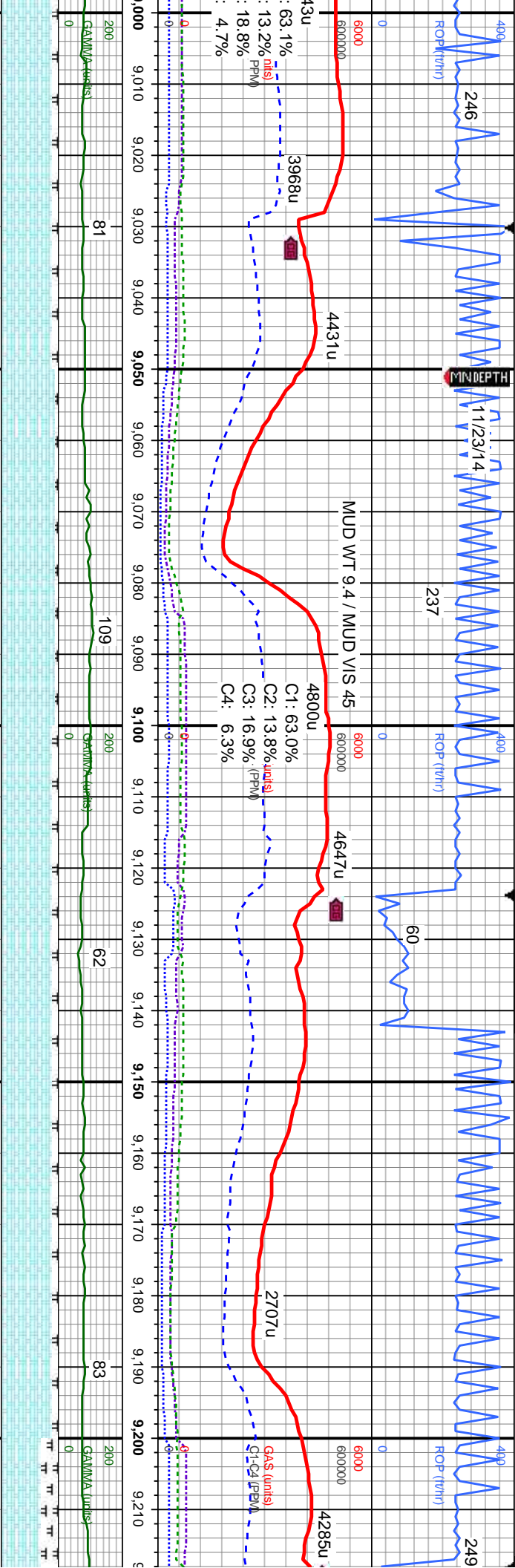
D: 8.786'
VD: 7.061.42'
Inclination: 88.9°
Azimuth: 182°
S: 1,769.47'

MD: 8.880'
TVD: 7.063.06'
Inclination: 89.1°
Azimuth: 180.4°
VS: 1,863.4'

MD: 8.975'
TVD: 7.063.72'
Inclination: 90.1°
Azimuth: 180.4°
VS: 1,958.37'

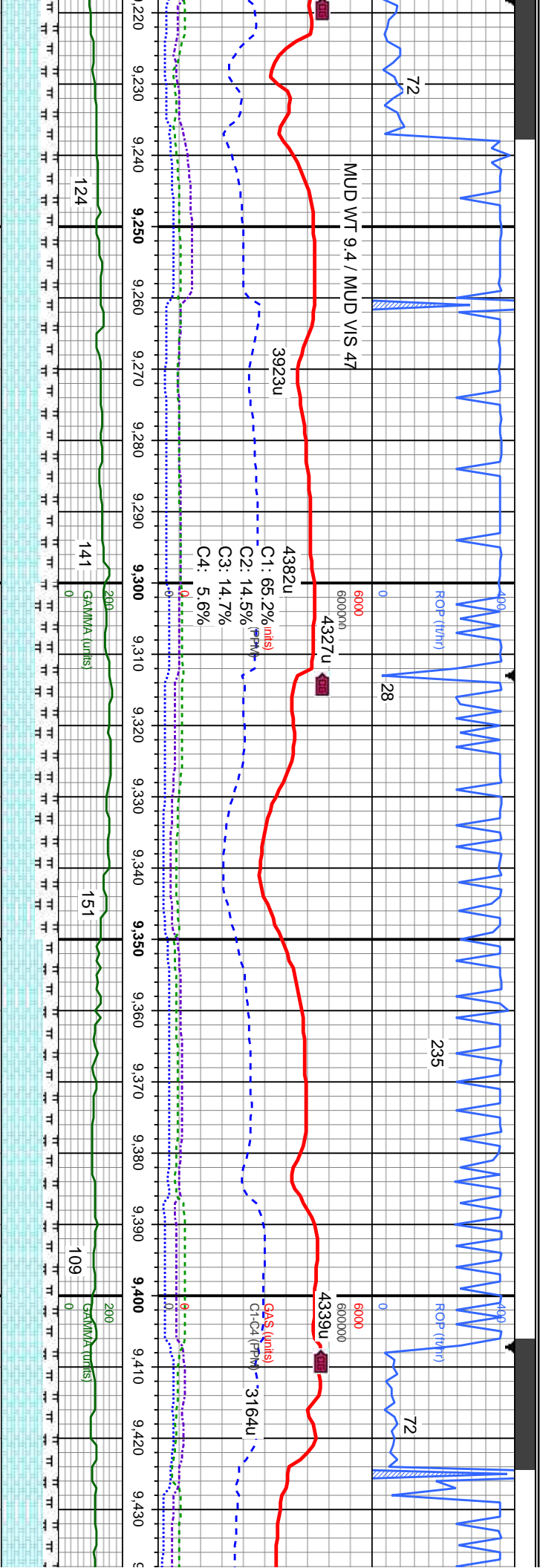
bl-ky, sft-sl frm, dk gy-blk, frm, occ fos inci; tr lse bl-wht mod	CHK: lt-dk gy, brn ip, sb blk-ylky, sft-sl frm, mot-str ip, glos tex ip, v calc; MRLST: dk gy-blk, frm, brit, gt-arg tex, lam, sb ply, occ fos inci; tr bent; v fast dfse; bri bl-wht mod stmg-milky cut	CHK: lt-dk gy, brn ip, sb blk-ylky, sft-sl frm, sl str ip, glos tex ip, v calc; MRLST: dk gy-blk, frm, brit, gt-arg tex, lam, sb ply; v fast dfse; bri bl-wht mod stmg-milky cut	CHK: lt-dk gy, brn ip, sb blk-ylky, sft-sl frm, sl str ip, glos tex ip, v calc; MRLST: dk gy-blk, frm, brit, gt-arg tex, lam, sb ply; v fast dfse; bri bl-wht mod stmg-milky cut	CHK: lt-med gy, sb blk-ylky, sft-sl frm, sl str ip, glos tex ip, v calc; MRLST: dk gy-blk, frm, brit, gt-arg tex, lam, sb ply; v fast dfse; bri bl-wht mod stmg-milky cut
---	--	---	---	--





5600	CHK: lt-med gy, sb blk-y-blk, sft-sl frm, sl str ip, glos tex ip, v calc; MRLST: dk gy-blk, frm, brit, gt-arg tex, lam, sb ply;v fast difse, bri bl-wht mod-fast sting cut	5600	CHK: lt-med gy, sb blk-y-blk, sft-sl frm, sl str ip, glos tex ip, v calc; MRLST: dk gy-blk, frm, brit, gt-arg tex, lam, v fast difse; bri bl-wht mod-fast sting cut	5600	CHK: lt-med gy, sb blk-y-blk, sft-sl frm, mot ip, glos-sm tex, v calc; MRLST: dk gy-blk, frm, brit, gt-arg tex, lam; v fast difse, bri bl-wht milky cut	5600	CHK: lt-med gy, sb blk-y-blk, sft-sl frm, mot ip, glos-sm tex, v calc; MRLST: dk gy-blk, frm, brit, gt-arg tex, lam, occ fos inci; tr lse fos frags; v fast difse, bri bl-wht milky cut	5600	CHK: lt-med gy ip, glos-sm tex, frm, brit, gt-arg difse, bri bl-wht
------	---	------	--	------	--	------	--	------	--





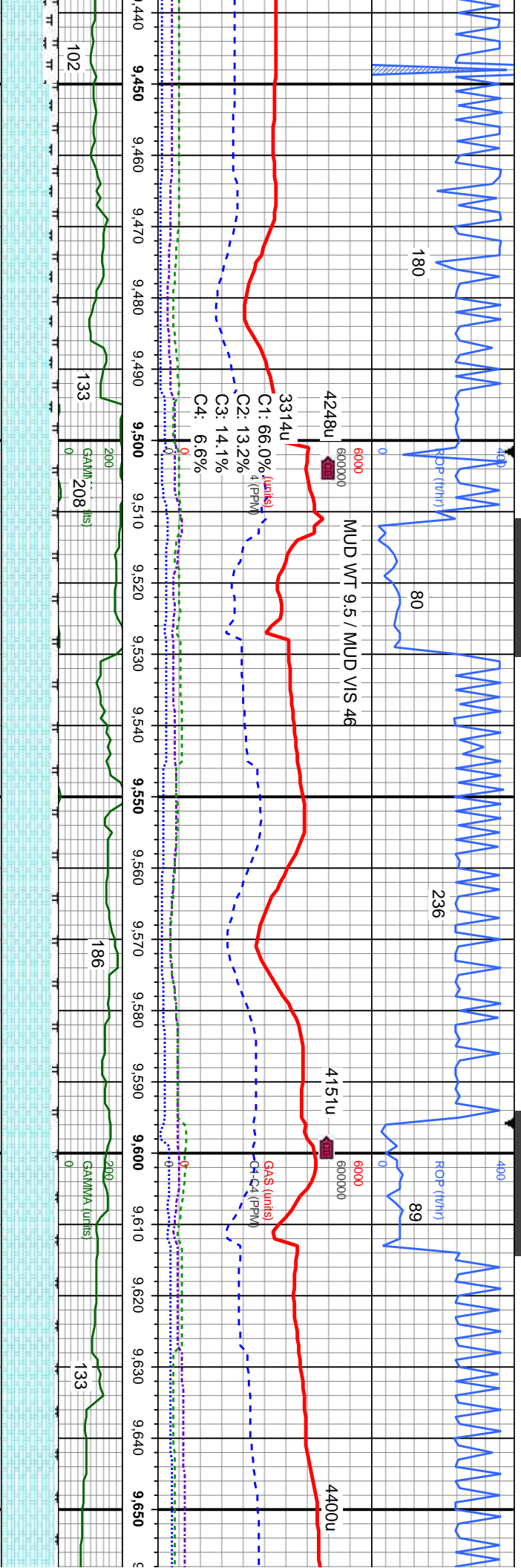
FROM C CHALK
RL @ -9223MD

MD: 9,258'
TVD: 7,057.38'
Inclination: 90.6°
Azimuth: 181.1°
VS: 2,241.22'

MD: 9,352'
TVD: 7,055.42'
Inclination: 91.8°
Azimuth: 180.6°
VS: 2,335.16'

sb blkly-bkly, sft-sl frm, mot v calc; MRLST: dk gy-blk, tex, lam, occ fos incl; v fast milky cut	CHK: lt-med gy, sb blkly-bkly, sft-sl frm, mot ip, glos-sm tex, v calc; MRLST: dk gy-blk, frm, brit, gt-arg tex, lam, occ fos incl; v fast difse, bri bl-wht milky cut	CHK: lt-med gy, sb blkly-bkly, sft-sl frm, mot ip, glos-sm tex, v calc; MRLST: dk gy-blk, frm, brit, gt-arg tex, lam, occ fos incl; v fast difse, bri bl-wht slow-mod stm cut	CHK: lt-med gy, sb blkly-bkly, sft-sl frm, mot ip, glos-sm tex, v calc; MRLST: dk gy-blk, frm, brit, gt-arg tex, lam, occ fos incl; v fast difse, bri bl-wht slow-mod stm cut
--	---	--	--





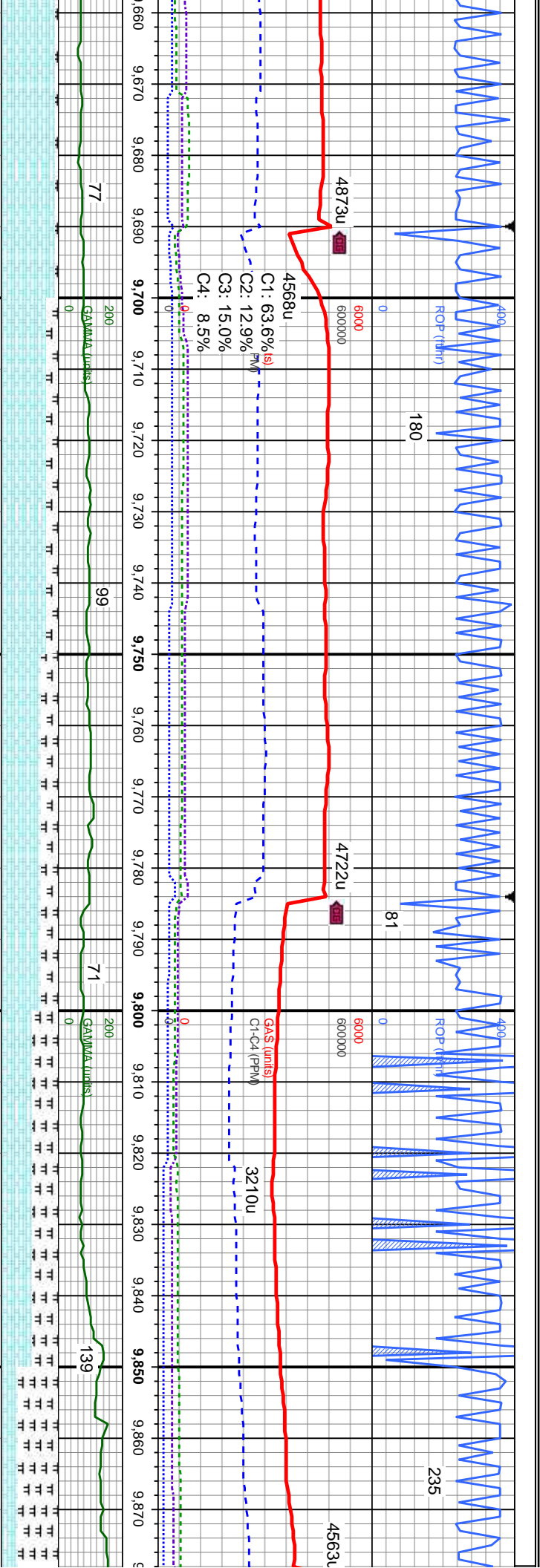
MD: 9,446'
TVD: 7,053.04'
Inclination: 91.1°
Azimuth: 181.1°
VS: 2,429.09'

MD: 9,541'
TVD: 7,051.46'
Inclination: 90.8°
Azimuth: 181.8°
VS: 2,524'

MD: 9,635'
TVD: 7,051.3'
Inclination: 89.4°
Azimuth: 183°
VS: 2,617.85'

fm, mot	CHK: It gy-med gy, occ tan-crm, sb blk-y-blky, sft-sl frm, mot tex, calc, MRLST: med gy, frm, brt, gt tex, lam, sb ply, tr cal fos, v fast difse, brt bl-wht slow-mod string cut	CHK: It gy-med gy, occ tan-crm, sb blk-y-blky, sft-sl frm, mot tex, calc, MRLST: med gy, frm, brt, gt tex, lam, sb ply, tr cal fos, v fast difse, brt bl-wht mod string-milky cut	CHK: It gy-med gy, occ tan-crm, sb blk-y-blky, sft-sl frm, mot tex, calc, MRLST: med gy, frm, brt, gt tex, lam, sb ply, tr cal fos, v fast difse, brt bl-wht mod string-milky cut	CHK: It gy-med gy, occ tan-crm, sb blk-y-blky, sft-sl frm, mot tex, calc, MRLST: med gy, frm, brt, gt tex, lam, sb ply, tr cal fos, v fast difse, brt bl-wht mod string-milky cut
---------	--	---	---	---



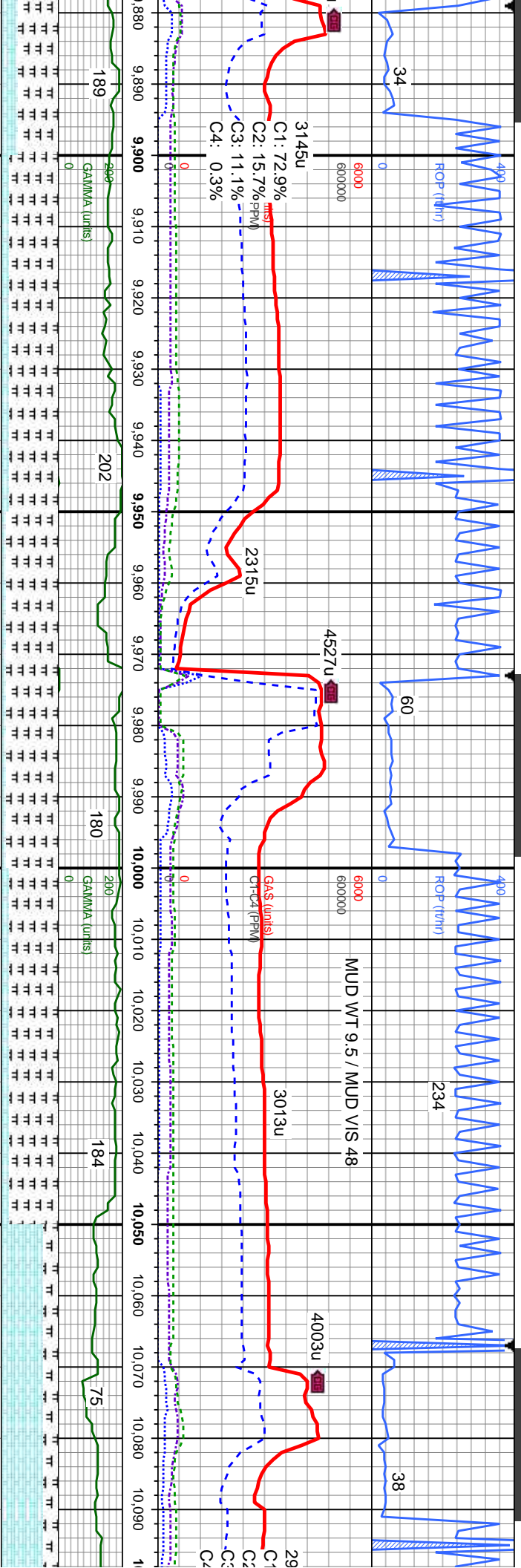


MD: 9,729'
TVD: 7,051.63'
Inclination: 90.2°
Azimuth: 182.5°
VS: 2,711.67'

MD: 9,824'
TVD: 7,050.38'
Inclination: 91.3°
Azimuth: 181.4°
VS: 2,806.55'

Depth (ft)	ROP (ft/hr)	Log Description
9,660	4873u	gy-med gy, occ tan-crm, sb blkly-blky, sft-sl frm, mot tex, calc, MRLST: med gy, frm, brit, gt tex, lam, sb ply, tr cal fos; v fast difse, bri bl-wht mod string-milky cut
9,700	4568u	CHK: It gy-med gy, occ tan-crm, sb blkly-blky, sft-sl frm, mot tex, calc, MRLST: med gy, frm, brit, gt tex, lam, sb ply, tr cal fos; v fast difse, bri bl-wht mod string-milky cut
9,780	4722u	CHK: It gy-med gy, occ tan-crm, sb blkly-blky, sft-sl frm, mot tex, calc, MRLST: med gy, frm, brit, gt tex, lam, sb ply, tr cal fos; v fast difse, bri bl-wht difse-milky cut
9,800	3210u	CHK: It gy-med gy, occ tan-crm, sb blkly-blky, sft-sl frm, mot tex, calc, MRLST: med-dk gy, frm, brit, gt tex, lam, sb ply, cal fos; v fast difse, bri bl-wht difse-milky cut
9,850	4563u	MRLST: med-dk gy, frm, ply; CHK: It gy-med gy, s; frm, mot tex, calc, r bent difse, bri bl-wht mod string-milky cut

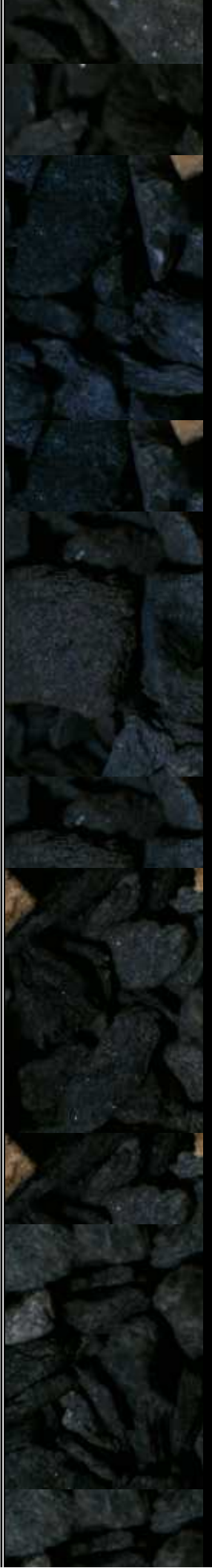


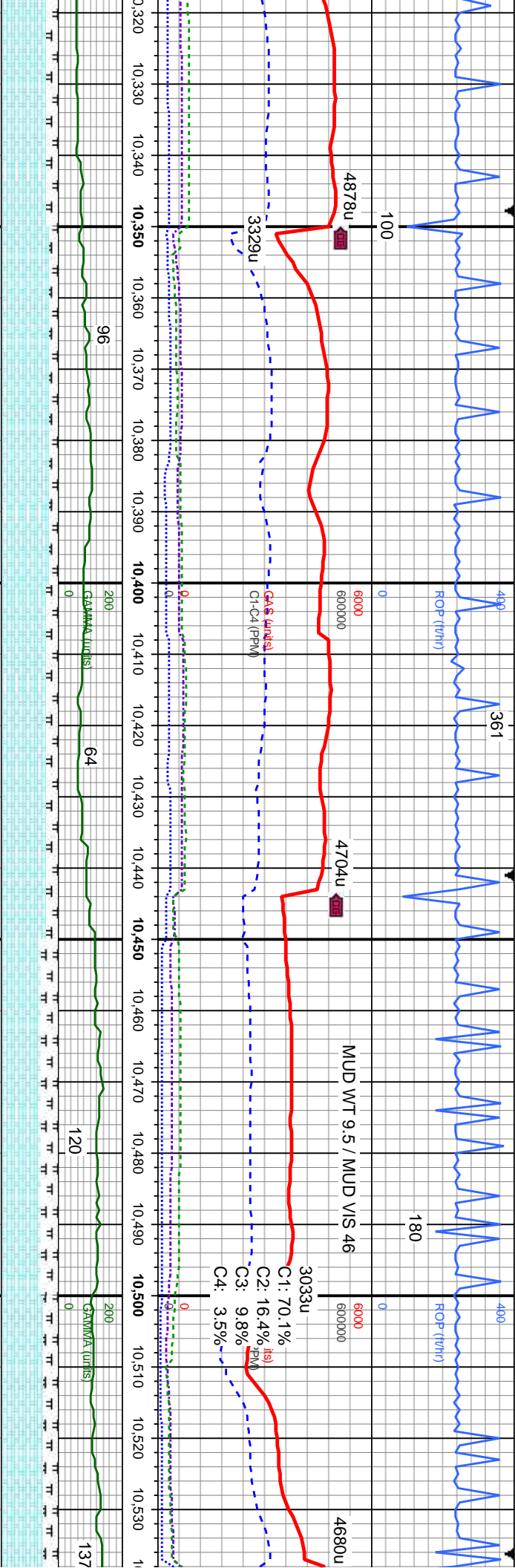


MD: 9,918'
TVD: 7,047.76'
Inclination: 91.9°
Azimuth: 182.1°
VS: 2,900.42'

MD: 10,012'
TVD: 7,044.97'
Inclination: 91.5°
Azimuth: 182.5°
VS: 2,994.24'

bit, gt tex, lam, sb	MRLST: med-dk gy, frm, brit, gt tex, lam, sb	MRLST: med-dk gy, frm, brit, gt tex, lam, sb	CHK: lt gy-med gy, occ tan-crm, sb
sb blk-y-bkly, sft-sl	ply; CHK: lt gy-med gy, sb blk-y-bkly, sft-sl	ply; CHK: lt gy-med gy, sb blk-y-bkly, sft-sl	blk-y-bkly, sft-sl frm, mot tex, calc; MRLST:
cal fos; v fast	frm, mot tex, calc, tr bent, cal fos; v fast	frm, mot tex, calc, tr bent, cal fos; v fast	med gy, frm, brit, gt tex, lam, sb ply, r
g-milky cut	diffse, bri bl-wht mod string cut	diffse, bri bl-wht mod string cut	bent, cal fos; mod fast difse, bri bl-wht
			mod string cut





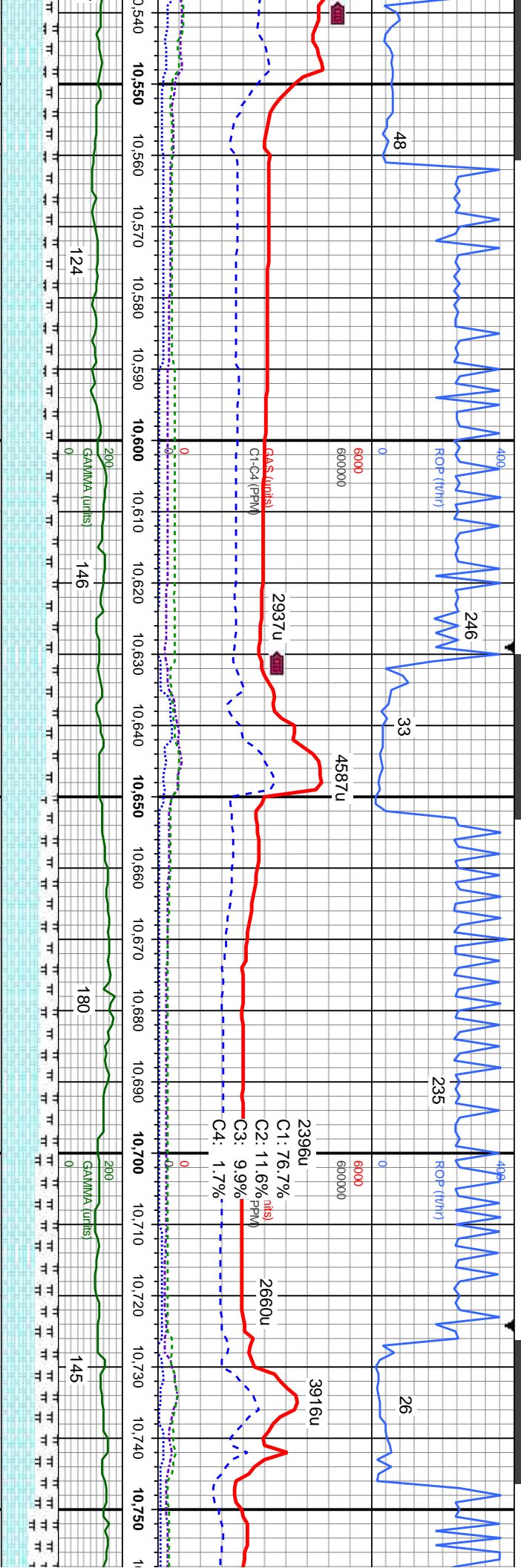
FAULTED FROM B CHALK
TO C CHALK @ ~10340 MD

MD: 10,386'
TVD: 7,043.75'
Inclination: 90.8°
Azimuth: 182.1°
VS: 3,367.5'

MD: 10,481'
TVD: 7,041.34'
Inclination: 92.1°
Azimuth: 181.6°
VS: 3,462.36'

gy, occ tan-crm, sb frm, mot tex, calc, MRLST: t, gt tex, lam, sb ply, cal fos; brl-wht mod stmg cut	CHK: lt gy-med gy, occ tan-crm, sb blkly-blky, sft-sl frm, mot tex, calc, MRLST: med gy, frm, brit, gt tex, lam, sb ply, cal fos; v fast difse, brl bl-wht mod stmg cut	CHK: lt gy-med gy, occ tan-crm, sb blkly-blky, sft-sl frm, mot tex, calc, MRLST: med gy, frm, brit, gt tex, lam, sb ply, cal fos; v fast difse, brl bl-wht mod stmg cut	CHK: lt gy-med gy, occ tan-crm, sb blkly-blky, sft-sl frm, mot tex, calc, MRLST: med gy, frm, brit, gt tex, lam, sb ply, cal fos; v fast difse, brl bl-wht mod stmg cut	CHK: lt gy-med gy, occ tan-crm, sb blkly-blky, sft-sl frm, mot tex, calc, MRLST: med gy, frm, brit, gt tex, lam, sb ply, cal fos; v fast difse, brl bl-wht mod stmg cut
---	--	--	--	--





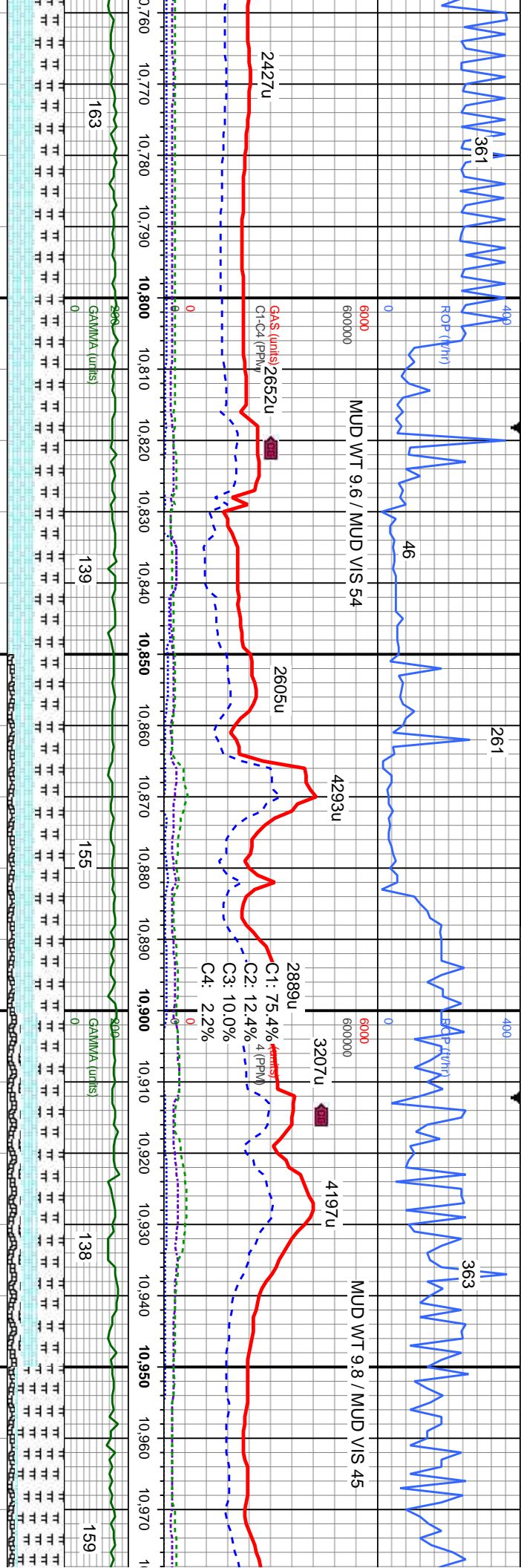
MD: 10,574'
TVD: 7,038.91'
Inclination: 90.9°
Azimuth: 181.8°
VS: 3,555.24'

MD: 10,668'
TVD: 7,037.6'
Inclination: 90.7°
Azimuth: 182.5°
VS: 3,649.11'

MD: TVD
Inclination
Azimuth
VS:

biky-biky, fast difse,	CHK: lt gy-med gy, occ tan-crm, sb biky-biky, sft-sl frm, mot tex, calc, MRLST: dk gy-blk, frm, brit, gt tex, lam, sb ply, rr cal fos; v fast difse, bri bl-wht mod sting cut	CHK: lt gy-med gy, occ tan-crm, sb biky-biky, sft-sl frm, mot tex, calc, MRLST: dk gy-blk, frm, brit, gt tex, lam, sb ply, rr cal fos; v fast difse, bri bl-wht mod-fast sting cut	CHK: dk-med gy, occ tan-it gy, sb biky-biky, sft-sl frm, mot tex, calc, MRLST: dk gy-blk, frm, brit, gt tex, lam, sb ply, rr cal fos; v fast difse, bri bl-wht mod-fast sting cut	CHK: dk-med gy, occ tan-it gy, sb biky-biky, sft-sl frm, mot tex, calc, MRLST: dk gy-blk, frm, brit, gt tex, lam, sb ply, rr fos frags, tr bent, v rr pyr; v fast difse, bri bl-wht sl-mod sting cut	CHK: c sft-sl fr frm, bri bent, v
------------------------	---	--	---	--	-----------------------------------





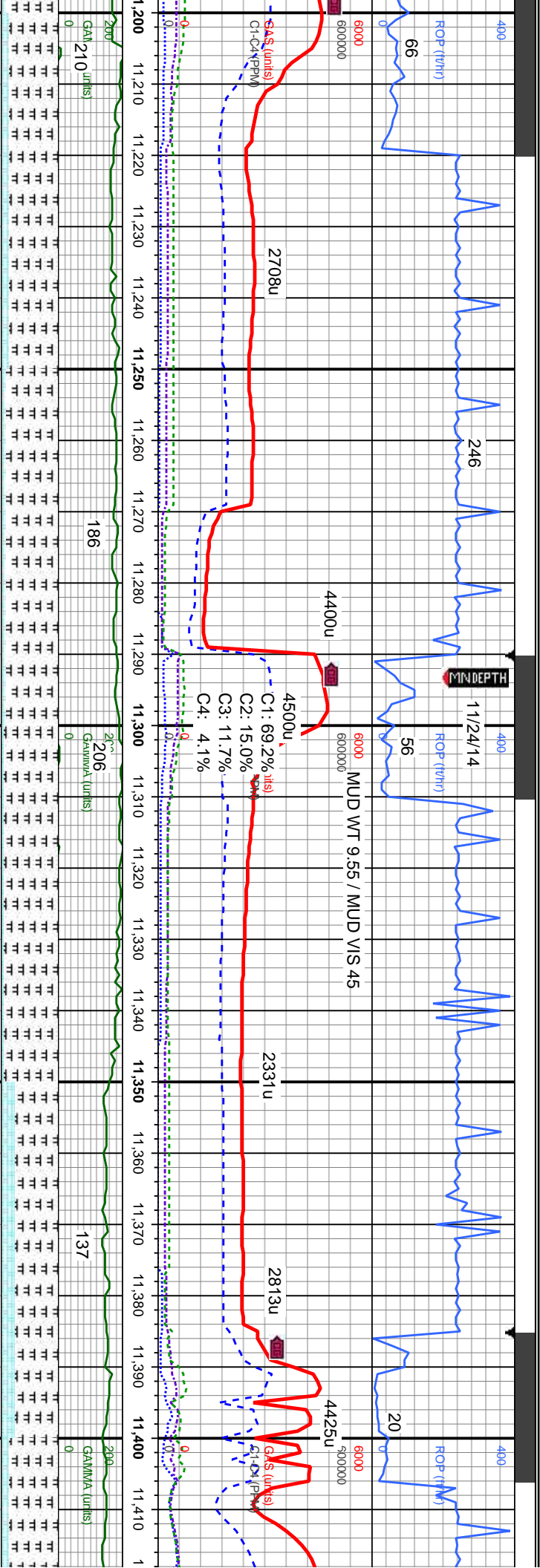
10,763'
 : 7,036.93'
ation: 90.1°
uth: 182.5°
3,743.95'

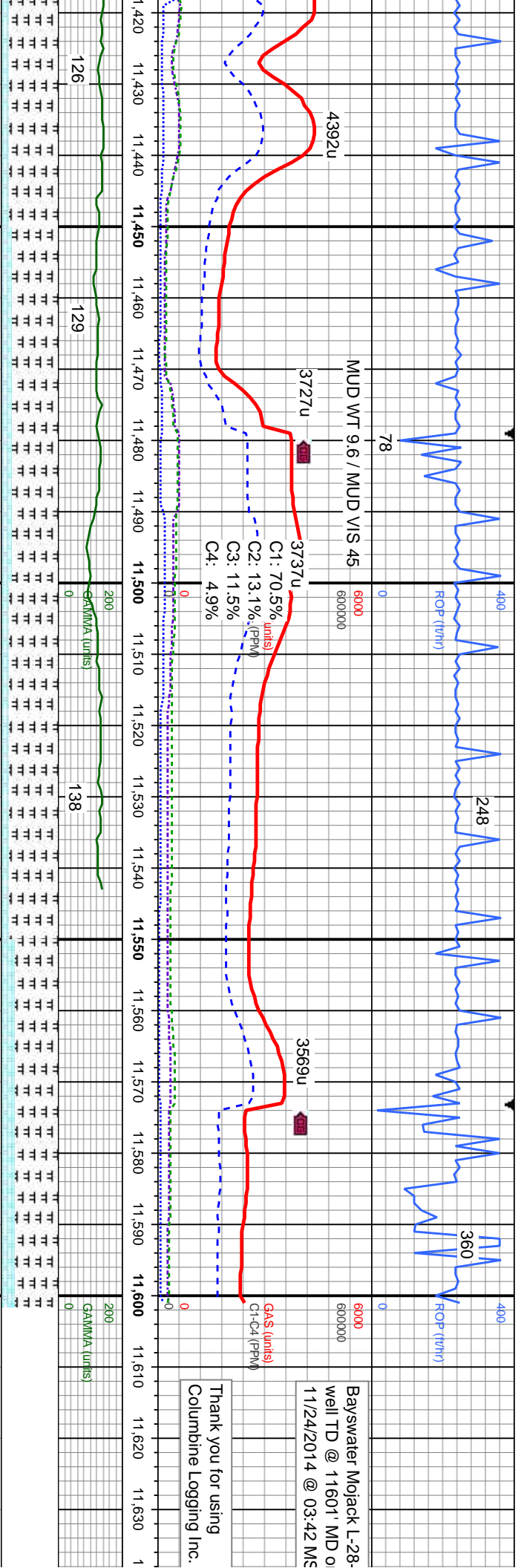
MD: 10,857'
TVD: 7,036.69'
Inclination: 90.2°
Azimuth: 181.8°
VS: 3,837.82'

MD: 10,952'
TVD: 7,036.52'
Inclination: 90°
Azimuth: 180.7°
VS: 3,932.76'

CHK: dk-med gy, occ tan-lt gy, sb blk-y-bkly, sft-sl frm, mot tex, calc; MRLST: dk gy-bk, frm, brit, gt tex, lam, sb ply, r r fos frags, tr bent; v fast difse, bri bl-wht mod-sting cut	MRLST: dk gy-bk, frm, brit, gt-sily tex, lam, sb ply; CHK: dk-med gy, occ tan-lt gy, sb blk-y-bkly, sft-sl frm, mot tex, calc; BENT: offwht-crm, flky, sft, arg tex, bri yel flor; v fast difse, bri bl-wht mod-fast sting cut	MRLST: dk gy-bk, frm, brit, gt-sily tex, lam, sb ply; CHK: dk-med gy, occ tan-lt gy, sb blk-y-bkly, sft-sl frm, mot tex, calc; BENT: offwht-crm, flky, sft, arg tex, bri yel flor; mod fast difse, bri bl-wht difse cut	MRLST: dk gy-bk, frm, brit, gt-sily tex, lam, sb ply; CHK: dk-med gy, occ tan-lt gy, sb blk-y-bkly, sft-sl frm, mot tex, calc; BENT: offwht-crm, flky, sft, arg tex, bri yel flor; mod fast difse, bri bl-wht difse cut
--	--	---	---







MD: 11,424'
D: 7,022.85'
Inclination: 91.6°
Muth: 182.3°
VS: 4,404.16'

MD: 11,518'
TVD: 7,019.32'
Inclination: 92.7°
Azimuth: 181.6°
VS: 4,497.98'

MD: 11,546'
TVD: 7,017.93'
Inclination: 93°
Azimuth: 181.3°
VS: 4,525.93'

MD: 11,601'
TVD: 7,015.05'
Inclination: 93°
Azimuth: 181.3°
VS: 4,580.81'

dk, frm, brit, gt-sily tex,
occ fos incl; CHK: med gy,
sb blkly-blky, sft-sl frm, mot
nt, tr fos frags; mod fast
dlt v sl-mod sting cut

MRLST: dk gy-blk, frm, brit, gt-sily tex,
lam, sb ply, occ fos incl; CHK: med gy,
occ tan-it gy, sb blkly-blky, sft-sl frm, mot
tex, calc; tr bent, tr fos frags; mod fast
dise, bri bl-whr v sl-mod sting cut

MRLST: dk gy-blk, frm, brit, gt-sily tex,
lam, sb ply, occ fos incl; CHK: med gy,
occ tan-it gy, sb blkly-blky, sft-sl frm, mot
and str tex, calc; tr bent, tr fos frags

MRLST: dk gy-blk, frm, brit, gt-sily tex,
lam, sb ply, occ fos incl; CHK: lt-med gy,
occ tan-it gy, sb blkly-blky, sft-sl frm, mot
and str tex, calc; tr bent, tr fos frags

PROJECTION TO BIT

Bayswater Mjack L-28
Well TD @ 11601' MD o
11/24/2014 @ 03:42 MS

Thank you for using
Columbine Logging Inc.

