

Type of Drilling Fluid FWL SND

Company BAYSWATER EXPLORATION AND PRODUCTION

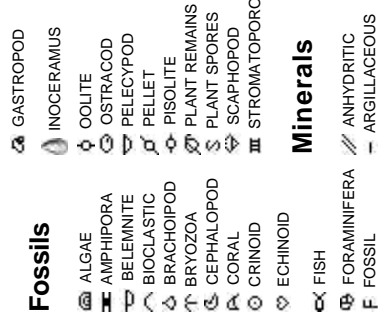
Address 730 17th Street, Suite 610
Denver, CO 80202

Name ROBERT DAVIS, LISA KANT
Company COLUMBINE LOGGING INC.
Address 602 S. Lipan Street
Denver, CO 80223

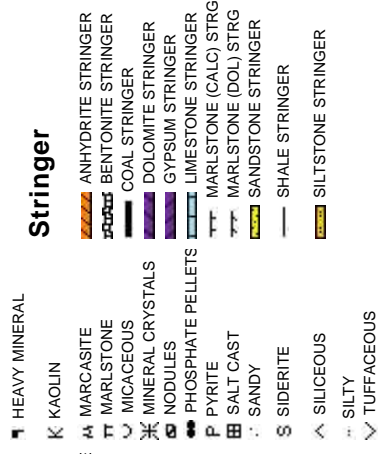
[illegible]

Accessories

Fossils



Stringer

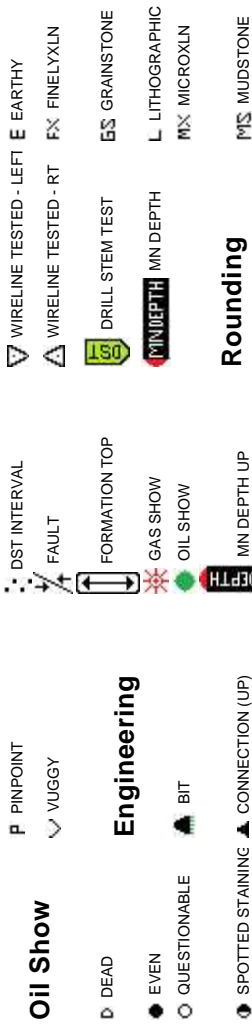


Minerals



Other Symbols

Oil Show



Engineering



Porosity

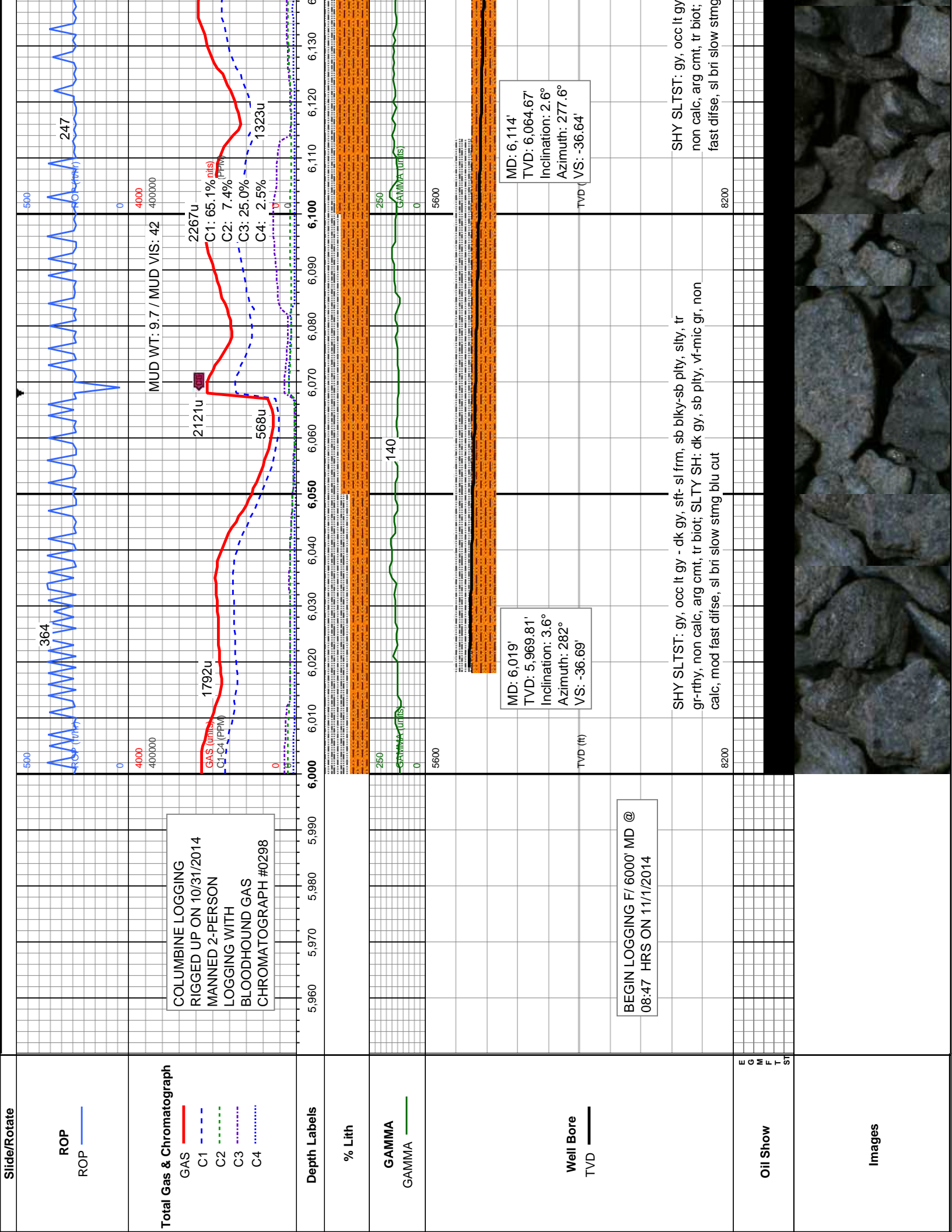


Textures

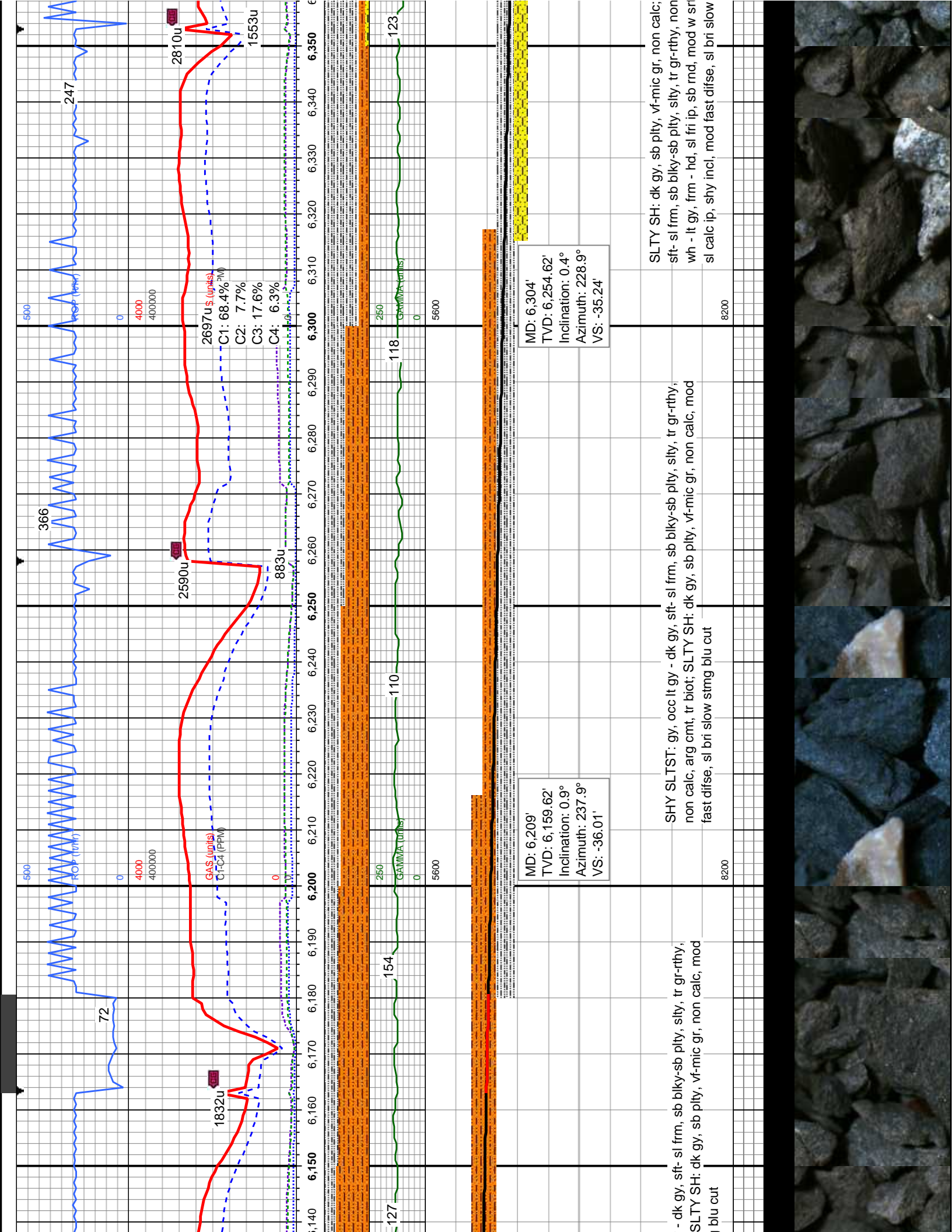


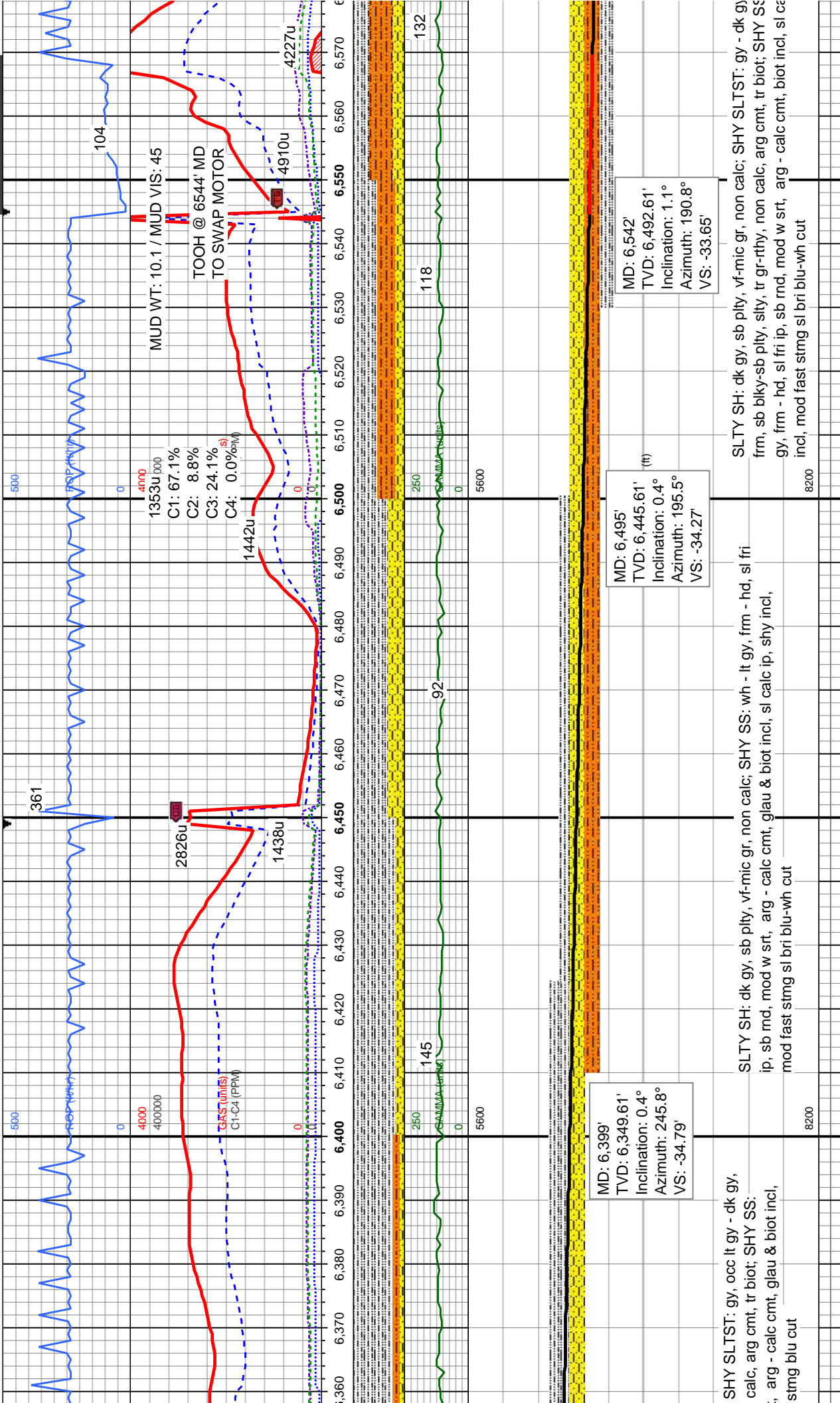
MARLSTONE	SHALY SANDSTONE
METAMORPHIC	SHALY SILTSTONE
NO SAMPLE	SILTY SHALE
SALT	SILTSTONE
SANDSTONE	TILL
SALT-PEPPER SAND	TUFF
SHALE	WELDED TUFF
SHALE COLORED	
SHALE GRAY	

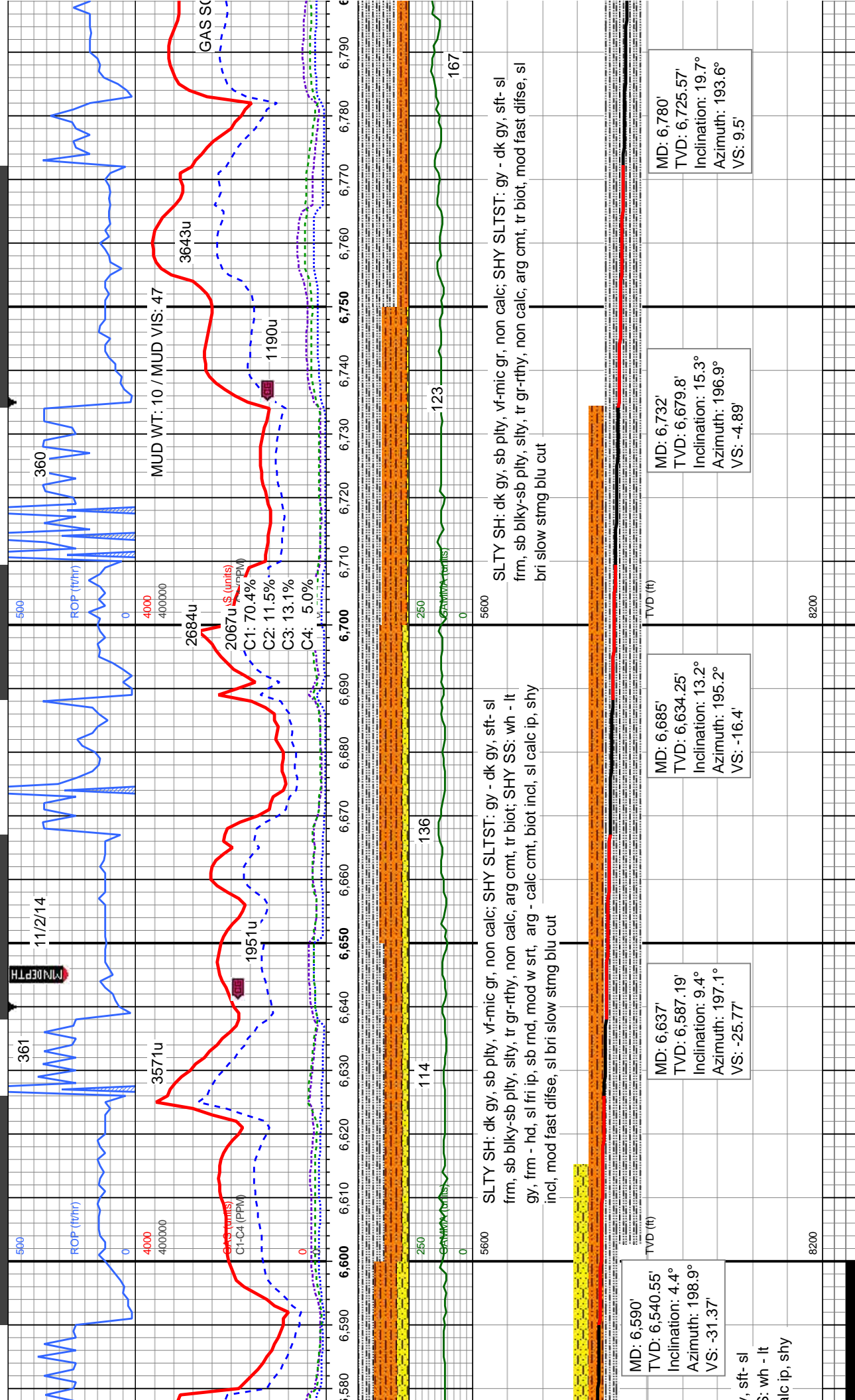


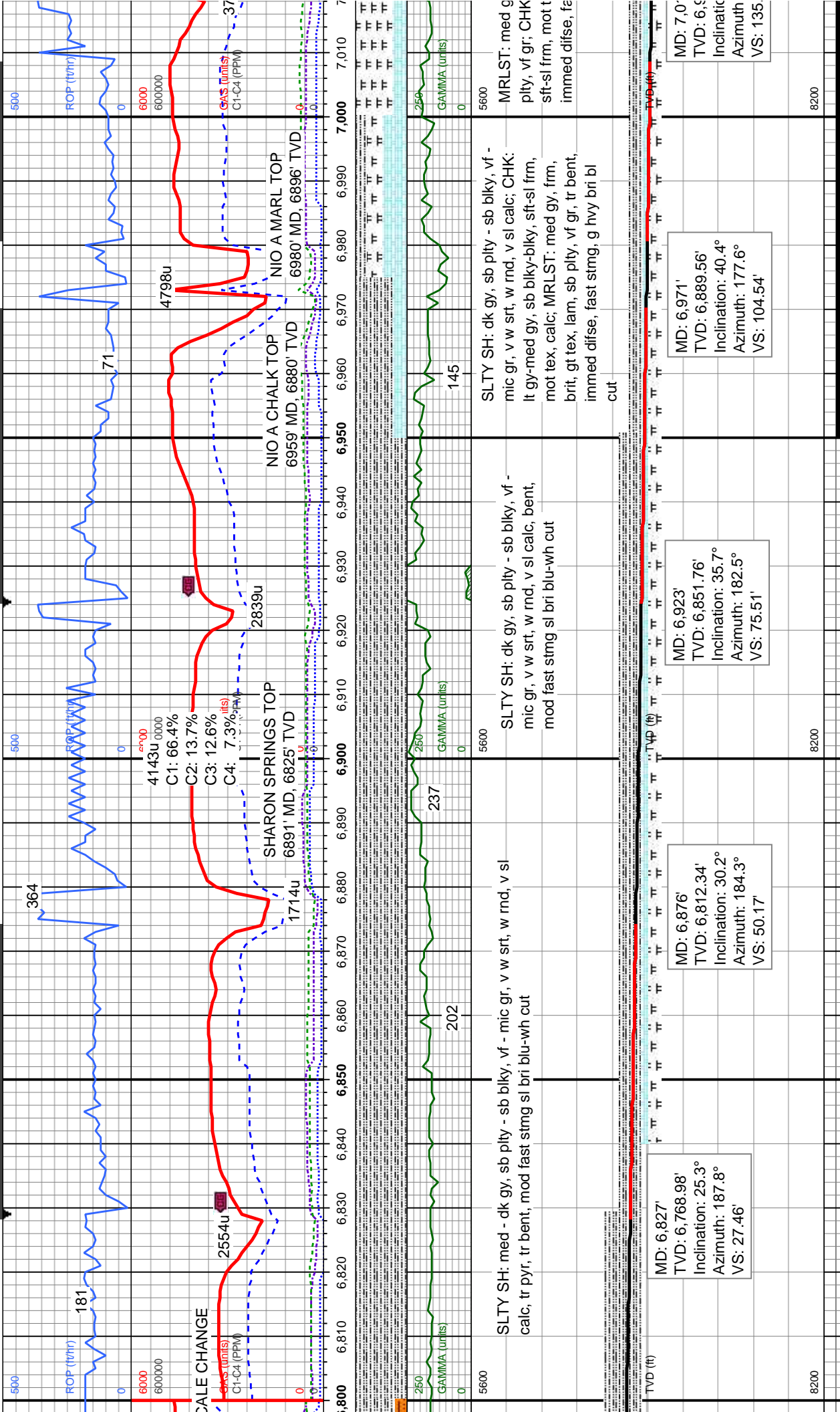


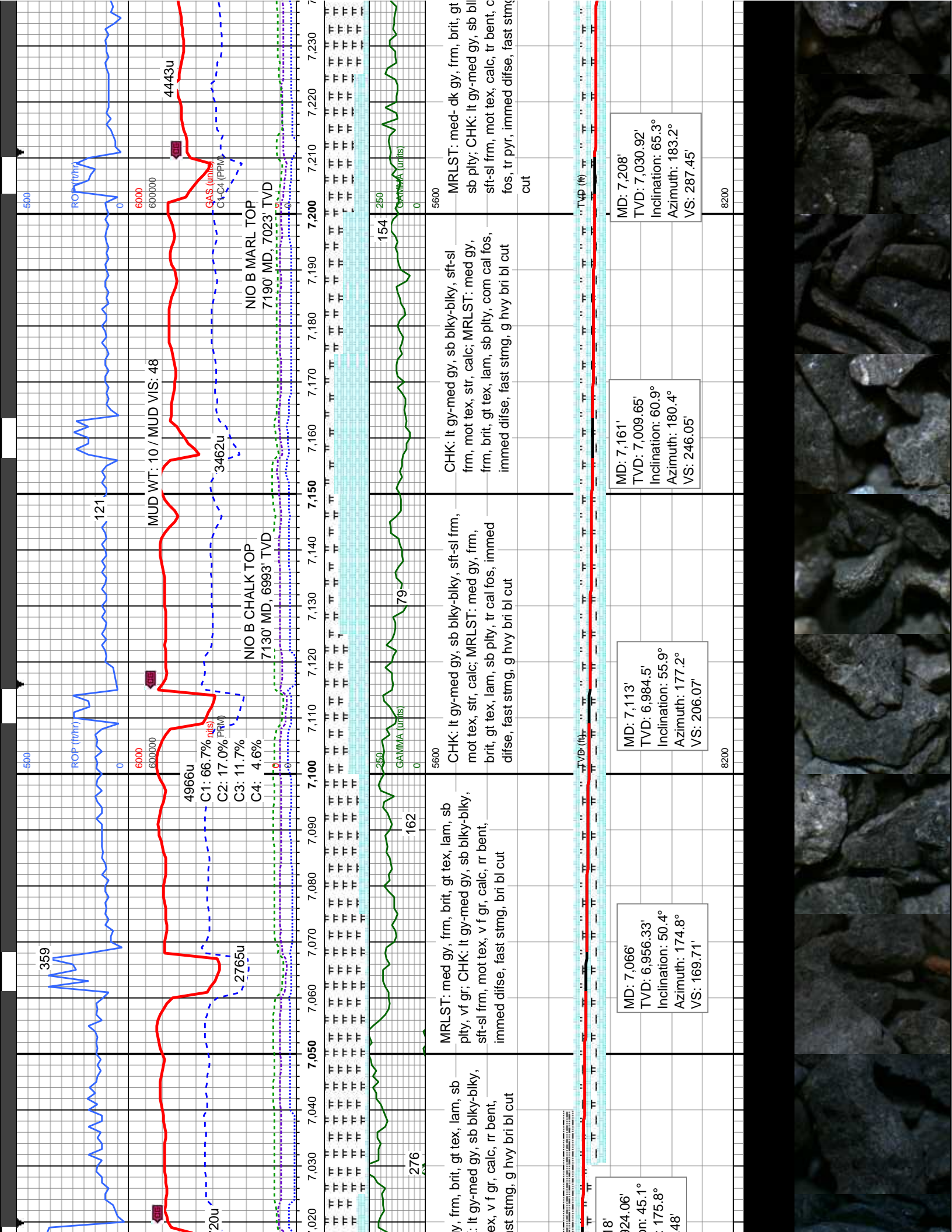
<











500

ROP (ft/hr)

6000

600000

121

MUD WT: 10 / MUD VIS: 48

500

ROP (ft/hr)

6000

600000

359

20u

4966u

C1: 66.7% (US)

C2: 17.0% (PRV)

C3: 11.7%

C4: 4.6%

2765u

4443u

3462u

NIO B MARL TOP

7190' MD, 7023' TVD

NIO B CHALK TOP

7130' MD, 6993' TVD

154

5600

GAMMA (UNITS)

0

250

5600

MRLST: med-dk gy, frm, brit, g

sb ply; CHK: lt gy-med gy, sb bl

sft-sl frm, mot tex, calc, tr bent, c

fos, tr pyr, immed difse, fast stm

cut

MD: 7,208'

TVD: 7,030.92'

Inclination: 65.3°

Azimuth: 183.2°

VS: 287.45'

MD: 7,161'

TVD: 7,009.65'

Inclination: 60.9°

Azimuth: 180.4°

VS: 246.05'

MD: 7,113'

TVD: 6,984.5'

Inclination: 55.9°

Azimuth: 177.2°

VS: 206.07'

MD: 7,066'

TVD: 6,956.33'

Inclination: 50.4°

Azimuth: 174.8°

VS: 169.71'

MD: 7,024.06'

TVD: 6,956.33'

Inclination: 45.1°

Azimuth: 175.8°

VS: 48'

MD: 7,066'

TVD: 6,956.33'

Inclination: 50.4°

Azimuth: 174.8°

VS: 169.71'

MD: 7,113'

TVD: 6,984.5'

Inclination: 55.9°

Azimuth: 177.2°

VS: 206.07'

MD: 7,161'

TVD: 7,009.65'

Inclination: 60.9°

Azimuth: 180.4°

VS: 246.05'

MD: 7,208'

TVD: 7,030.92'

Inclination: 65.3°

Azimuth: 183.2°

VS: 287.45'

MD: 7,208'

TVD: 7,030.92'

Inclination: 65.3°

Azimuth: 183.2°

VS: 287.45'

MD: 7,208'

TVD: 7,030.92'

Inclination: 65.3°

Azimuth: 183.2°

VS: 287.45'

MD: 7,208'

TVD: 7,030.92'

Inclination: 65.3°

Azimuth: 183.2°

VS: 287.45'

MD: 7,208'

TVD: 7,030.92'

Inclination: 65.3°

Azimuth: 183.2°

VS: 287.45'

MD: 7,208'

TVD: 7,030.92'

Inclination: 65.3°

Azimuth: 183.2°

VS: 287.45'

MD: 7,208'

TVD: 7,030.92'

Inclination: 65.3°

Azimuth: 183.2°

VS: 287.45'

MD: 7,208'

TVD: 7,030.92'

Inclination: 65.3°

Azimuth: 183.2°

VS: 287.45'

MD: 7,208'

TVD: 7,030.92'

Inclination: 65.3°

Azimuth: 183.2°

VS: 287.45'

MD: 7,208'

TVD: 7,030.92'

Inclination: 65.3°

Azimuth: 183.2°

VS: 287.45'

MD: 7,208'

TVD: 7,030.92'

Inclination: 65.3°

Azimuth: 183.2°

VS: 287.45'

MD: 7,208'

TVD: 7,030.92'

Inclination: 65.3°

Azimuth: 183.2°

VS: 287.45'

MD: 7,208'

TVD: 7,030.92'

Inclination: 65.3°

Azimuth: 183.2°

VS: 287.45'

MD: 7,208'

TVD: 7,030.92'

Inclination: 65.3°

Azimuth: 183.2°

VS: 287.45'

MD: 7,208'

TVD: 7,030.92'

Inclination: 65.3°

Azimuth: 183.2°

VS: 287.45'

MD: 7,208'

TVD: 7,030.92'

Inclination: 65.3°

Azimuth: 183.2°

VS: 287.45'

MD: 7,208'

TVD: 7,030.92'

Inclination: 65.3°

Azimuth: 183.2°

VS: 287.45'

MD: 7,208'

TVD: 7,030.92'

Inclination: 65.3°

Azimuth: 183.2°

VS: 287.45'

MD: 7,208'

TVD: 7,030.92'

Inclination: 65.3°

Azimuth: 183.2°

VS: 287.45'

MD: 7,208'

TVD: 7,030.92'

Inclination: 65.3°

Azimuth: 183.2°

VS: 287.45'

MD: 7,208'

TVD: 7,030.92'

Inclination: 65.3°

Azimuth: 183.2°

VS: 287.45'

MD: 7,208'

TVD: 7,030.92'

Inclination: 65.3°

Azimuth: 183.2°

VS: 287.45'

MD: 7,208'

TVD: 7,030.92'

Inclination: 65.3°

Azimuth: 183.2°

VS: 287.45'

MD: 7,208'

TVD: 7,030.92'

Inclination: 65.3°

Azimuth: 183.2°

VS: 287.45'

MD: 7,208'

TVD: 7,030.92'

Inclination: 65.3°

Azimuth: 183.2°

VS: 287.45'

MD: 7,208'

TVD: 7,030.92'

Inclination: 65.3°

Azimuth: 183.2°

VS: 287.45'

MD: 7,208'

TVD: 7,030.92'

Inclination: 65.3°

Azimuth: 183.2°

VS: 287.45'

MD: 7,208'

TVD: 7,030.92'

Inclination: 65.3°

Azimuth: 183.2°

VS: 287.45'

MD: 7,208'

TVD: 7,030.92'

Inclination: 65.3°

Azimuth: 183.2°

VS: 287.45'

MD: 7,208'

TVD: 7,030.92'

Inclination: 65.3°

Azimuth: 183.2°

VS: 287.45'

MD: 7,208'

TVD: 7,030.92'

Inclination: 65.3°

Azimuth: 183.2°

VS: 287.45'

MD: 7,208'

TVD: 7,030.92'

Inclination: 65.3°

Azimuth: 183.2°

VS: 287.45'

MD: 7,208'

TVD: 7,030.92'

Inclination: 65.3°

Azimuth: 183.2°

VS: 287.45'

MD: 7,208'

TVD: 7,030.92'

Inclination: 65.3°

Azimuth: 183.2°

VS: 287.45'

MD: 7,208'

TVD: 7,030.92'

Inclination: 65.3°

Azimuth: 183.2°

VS: 287.45'

MD: 7,208'

TVD: 7,030.92'

Inclination: 65.3°

Azimuth: 183.2°

VS: 287.45'

MD: 7,208'

TVD: 7,030.92'

Inclination: 65.3°

Azimuth: 183.2°

VS: 287.45'

MD: 7,208'

TVD: 7,030.92'

Inclination: 65.3°

Azimuth: 183.2°

VS: 287.45'

MD: 7,208'

TVD: 7,030.92'

Inclination: 65.3°

Azimuth: 183.2°

VS: 287.45'

MD: 7,208'

TVD: 7,030.92'

Inclination: 65.3°

Azimuth: 183.2°

VS: 287.45'

MD: 7,208'

TVD: 7,030.92'

Inclination: 65.3°

Azimuth: 183.2°

VS: 287.45'

MD: 7,208'

TVD: 7,030.92'

Inclination: 65.3°

Azimuth: 183.2°

VS: 287.45'

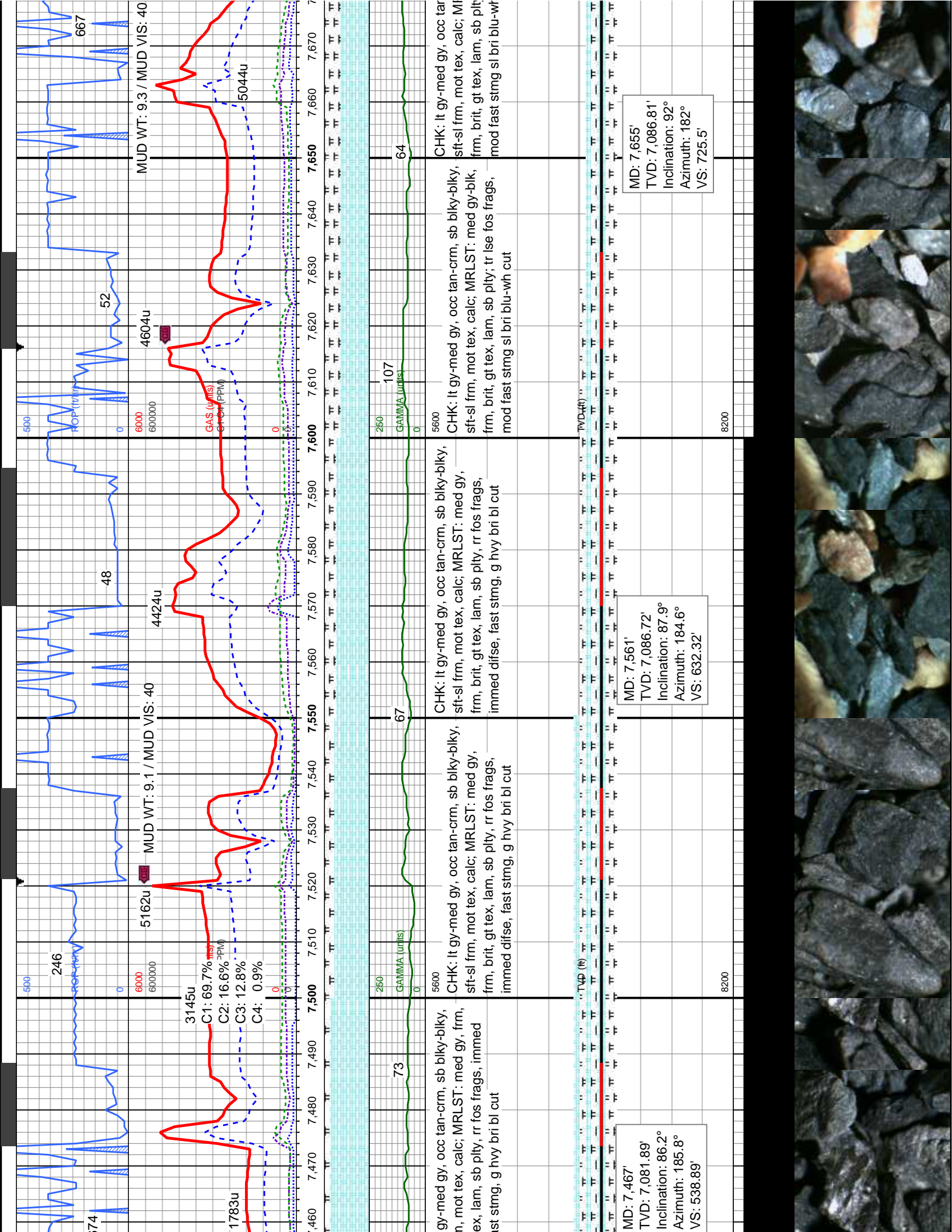
MD: 7,208'

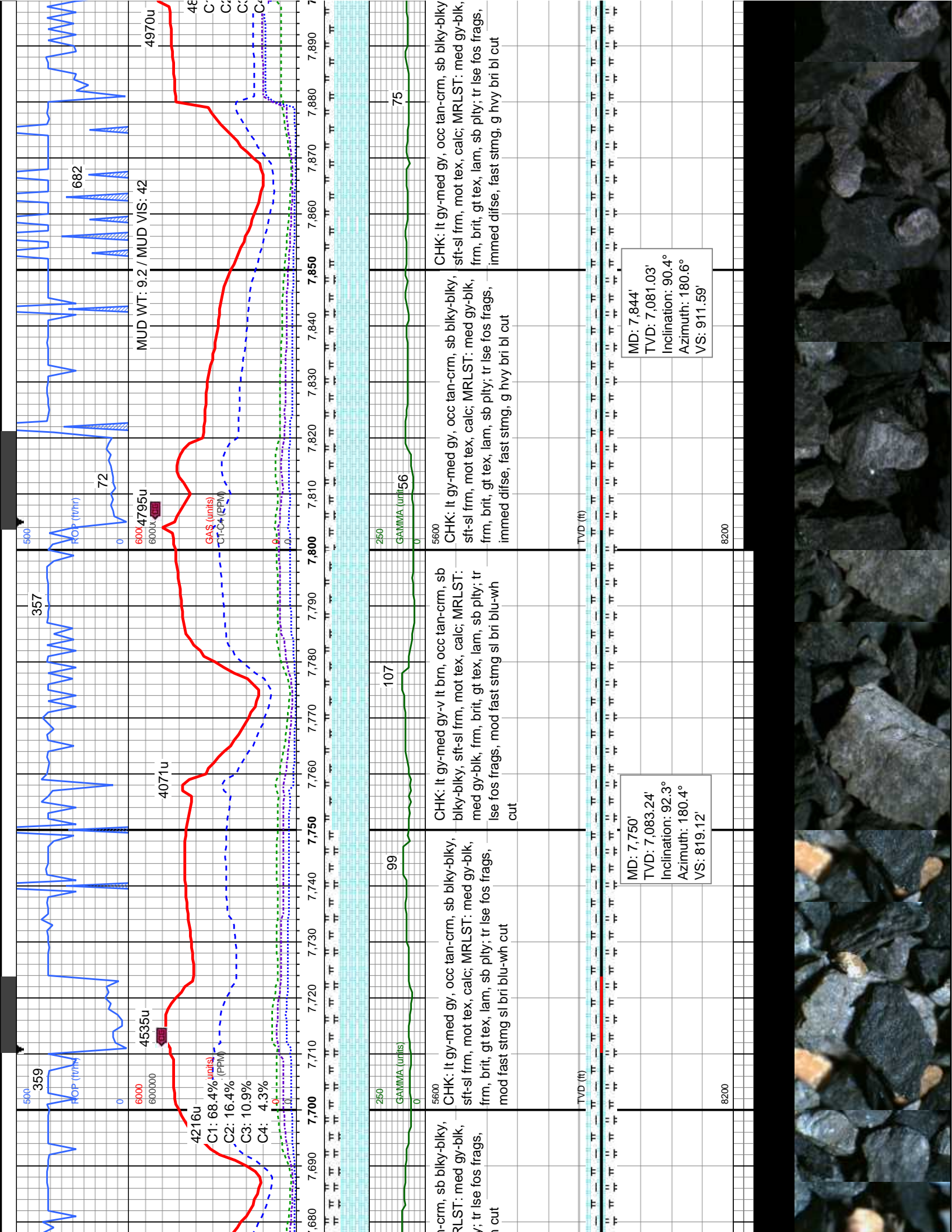
TVD: 7,030.92'

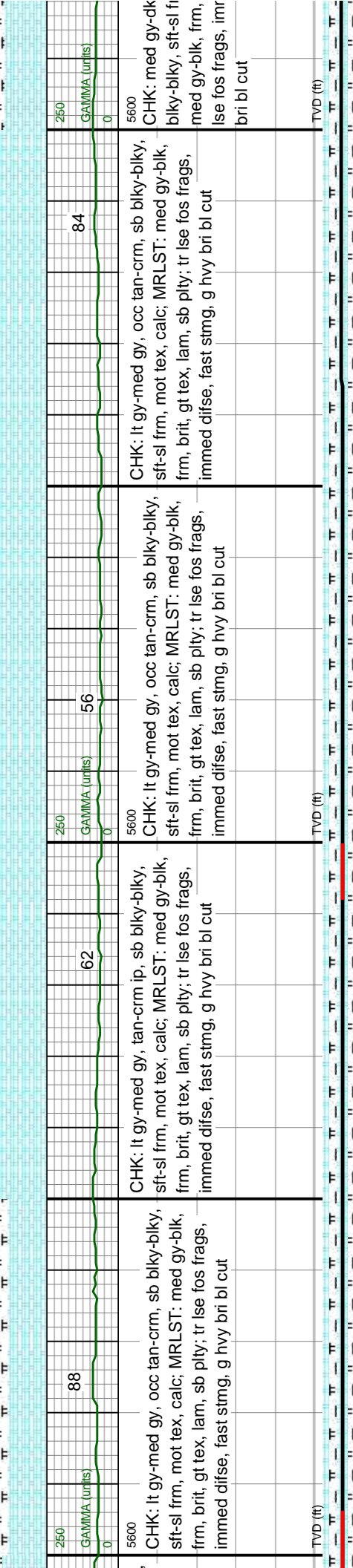
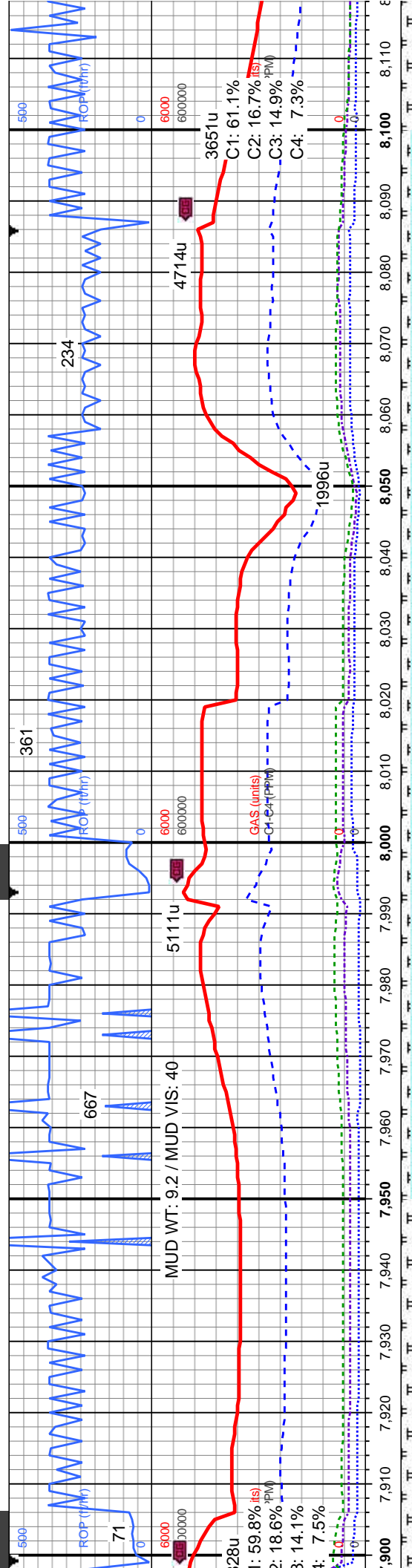
Inclination: 65.3°

Azimuth: 183.2°

VS: 287.45'

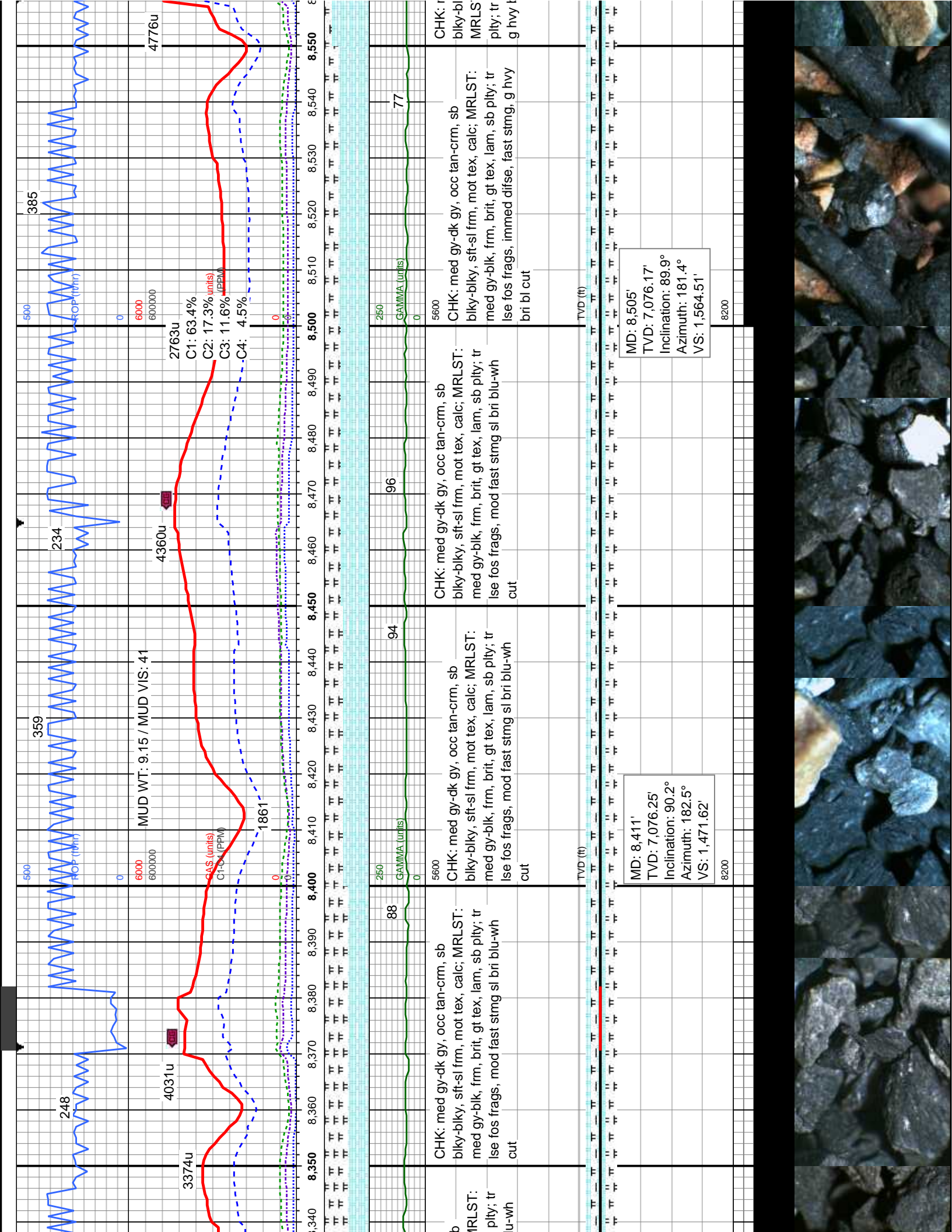


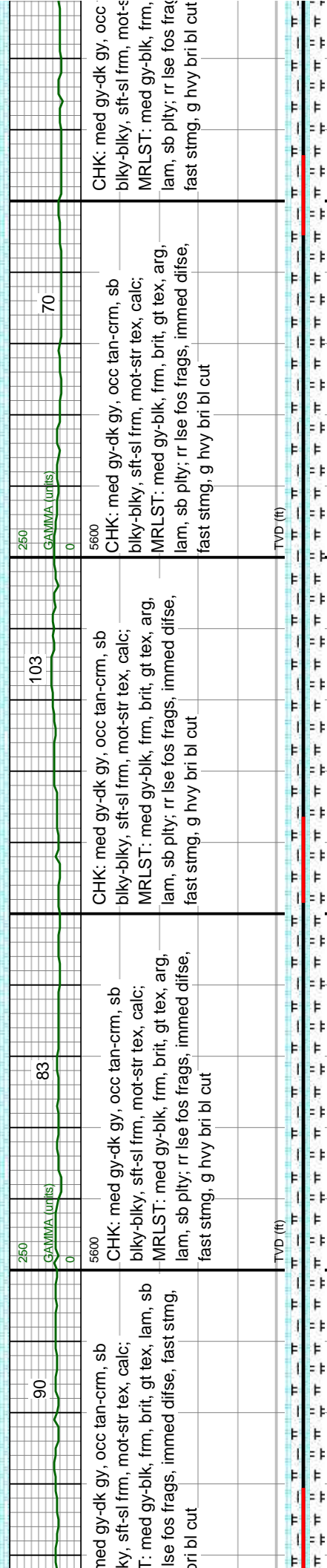
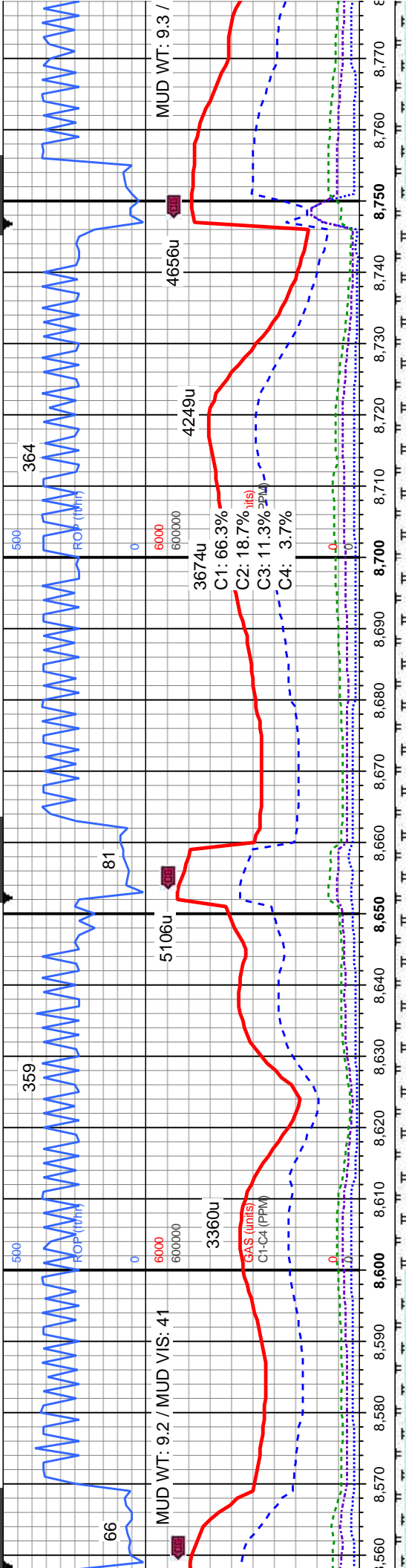




MD: 7,939'	MD: 8,033'	MD: 8,033'	MD: 8,033'
TVD: 7,080.86'	TVD: 7,080.29'	TVD: 7,080.29'	TVD: 7,080.29'
Inclination: 89.8°	Inclination: 90.9°	Inclination: 90.9°	Inclination: 90.9°
Azimuth: 182.1°	Azimuth: 182.3°	Azimuth: 182.3°	Azimuth: 182.3°
VS: 1,005.31'	VS: 1,098.27'	VS: 1,098.27'	VS: 1,098.27'







med gy-dk gy, occ tan-crm, sb
bly-blky, sft-sl frm, mot-str tex, calc;
T: med gy-blk, frm, brit, gt tex, lam, sb
lse fos frags, immed difse, fast stmg, g hvy bri bl cut

CHK: med gy-dk gy, occ tan-crm, sb
bly-blky, sft-sl frm, mot-str tex, calc;
MRLST: med gy-blk, frm, brit, gt tex, arg, lam, sb ply; rr lse fos frags, immed difse, fast stmg, g hvy bri bl cut

CHK: med gy-dk gy, occ tan-crm, sb
bly-blky, sft-sl frm, mot-str tex, calc;
MRLST: med gy-blk, frm, brit, gt tex, arg, lam, sb ply; rr lse fos frags, immed difse, fast stmg, g hvy bri bl cut

CHK: med gy-dk gy, occ tan-crm, sb
bly-blky, sft-sl frm, mot-str tex, calc;
MRLST: med gy-blk, frm, brit, gt tex, arg, lam, sb ply; rr lse fos frags, immed difse, fast stmg, g hvy bri bl cut

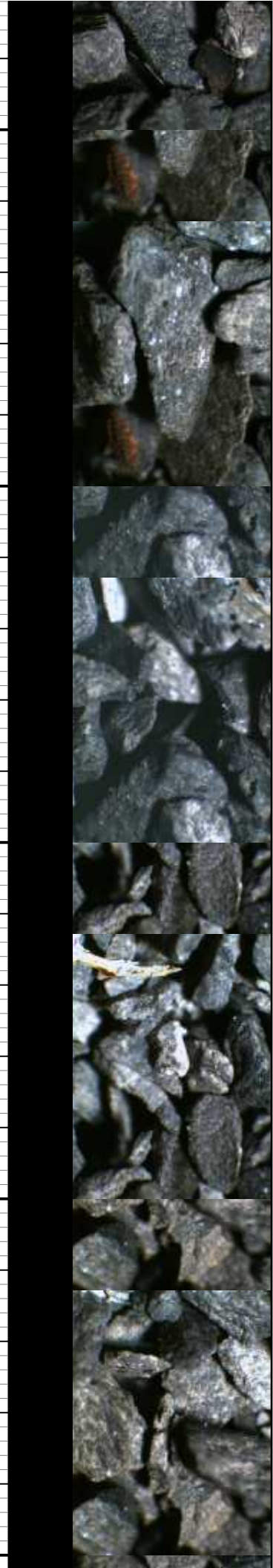
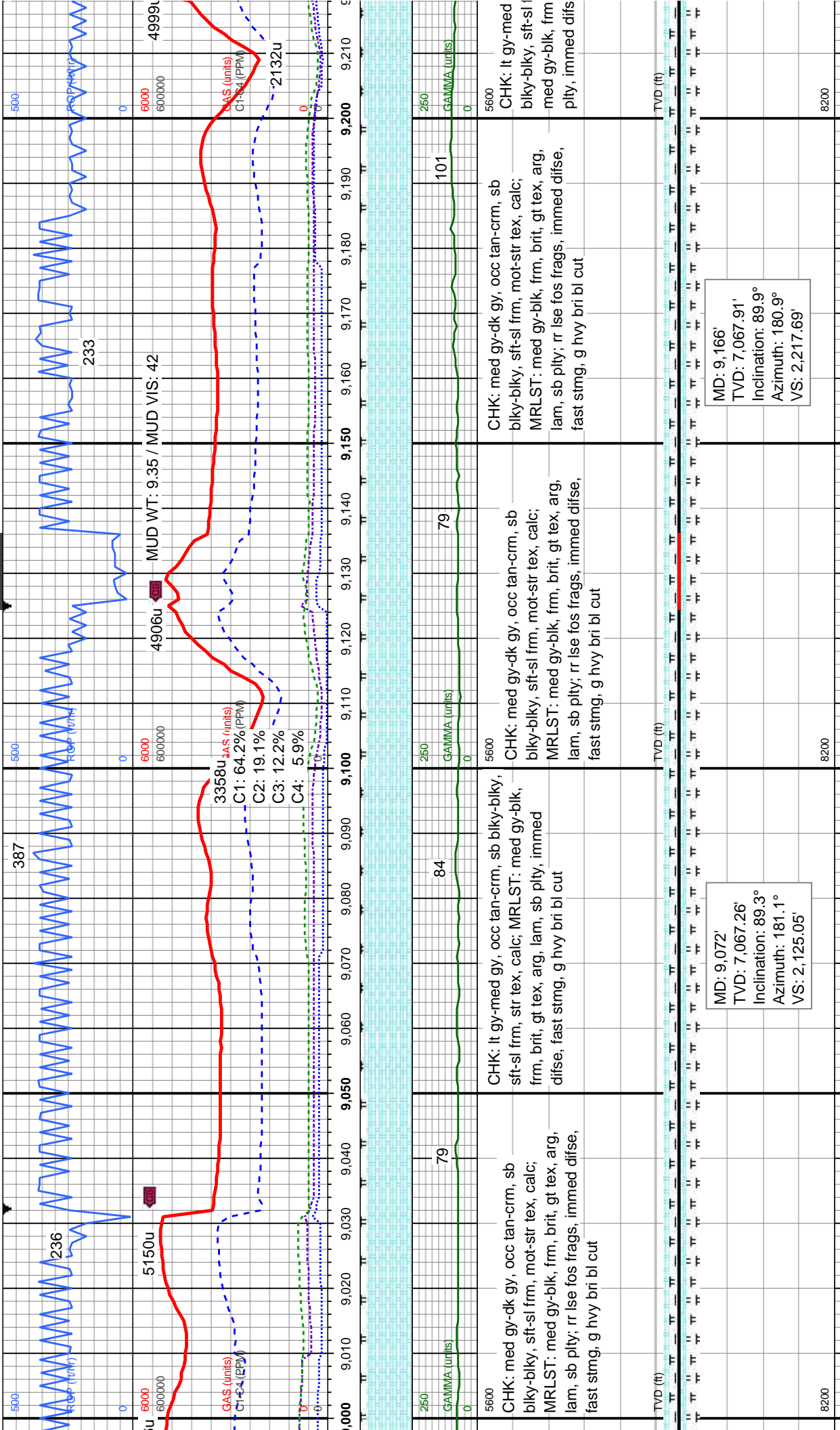
MD: 8,599'
TVD: 7,075.43'
Inclination: 91°
Azimuth: 182.5°
VS: 1,657.4'

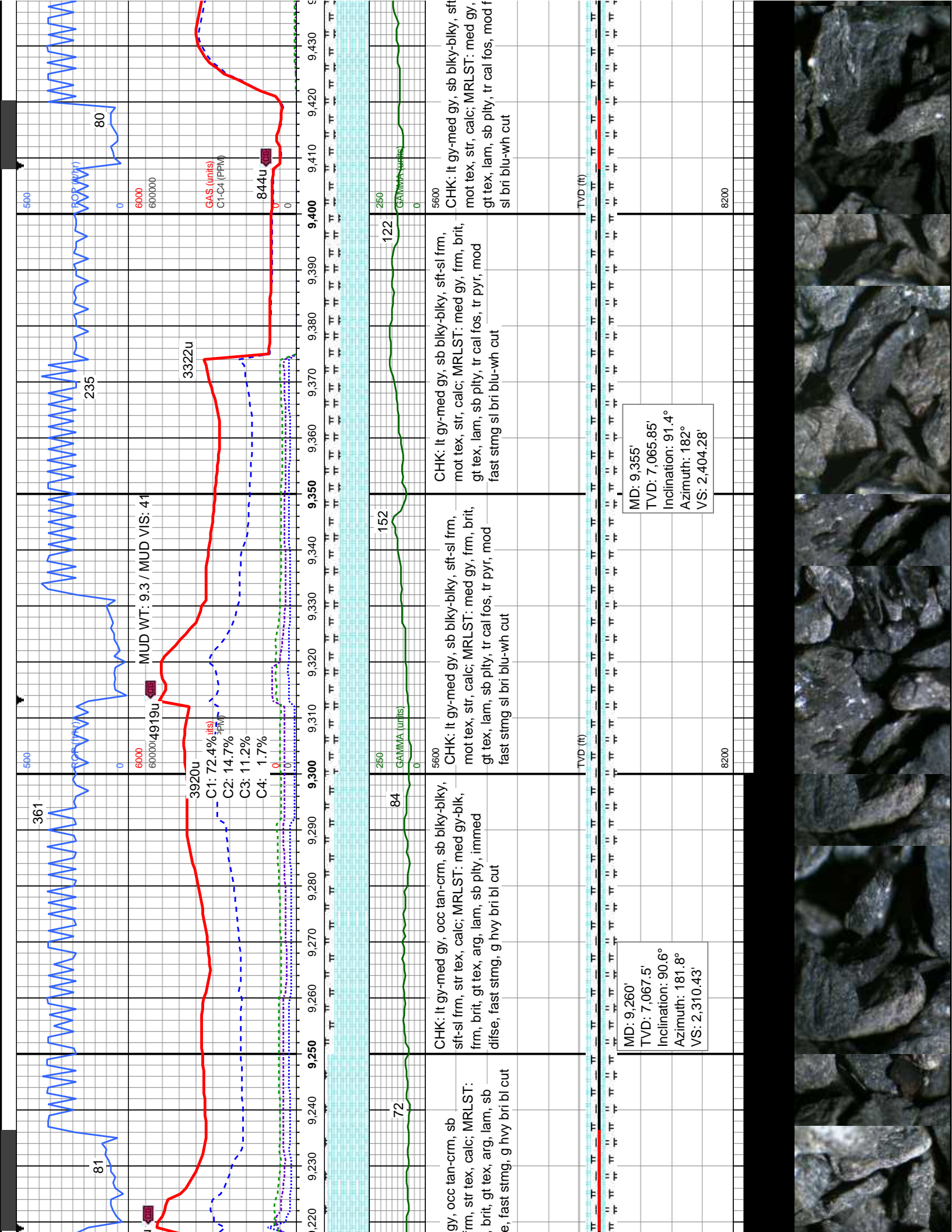
MD: 8,694'
TVD: 7,072.86'
Inclination: 92.1°
Azimuth: 182.5°
VS: 1,751.38'

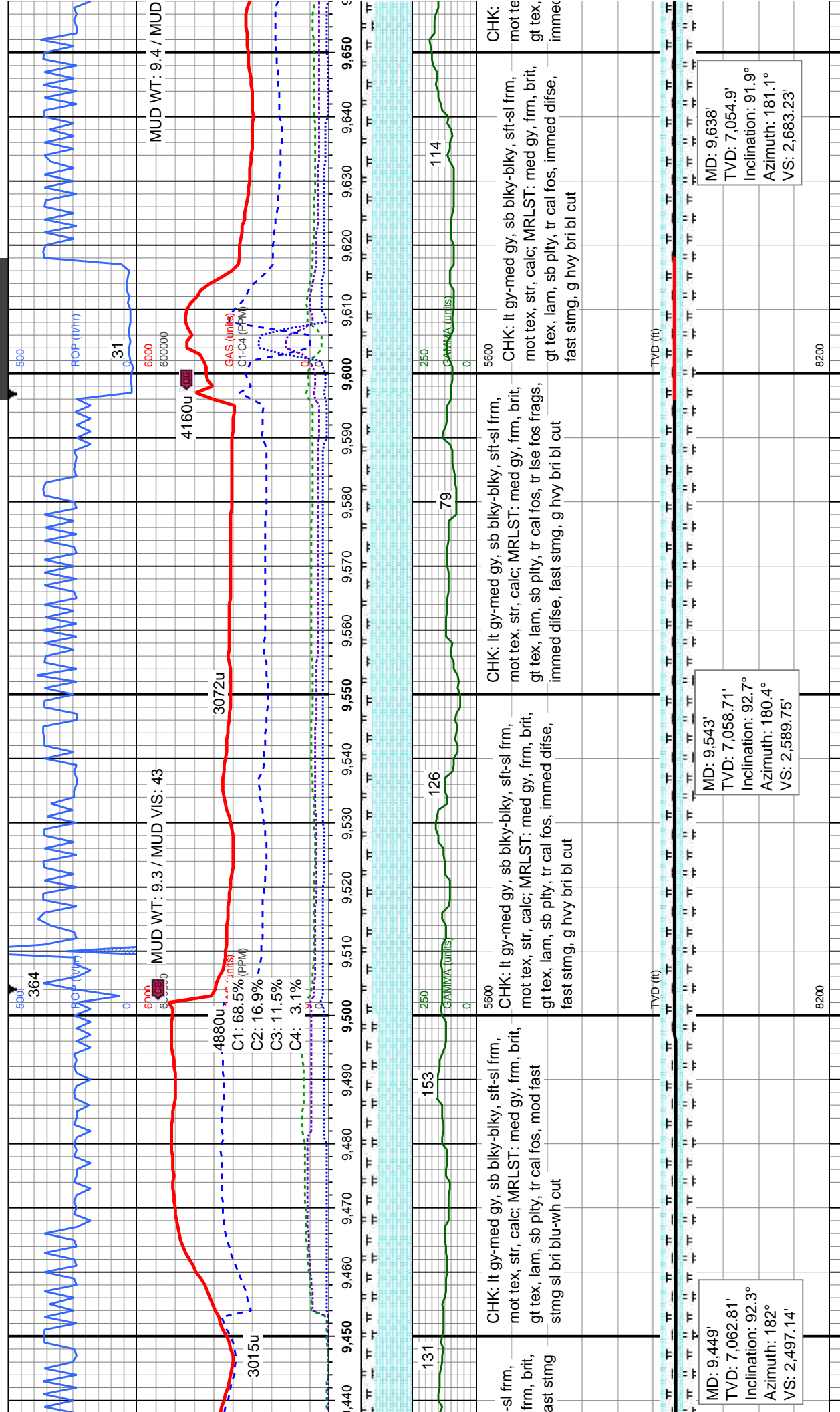
8200

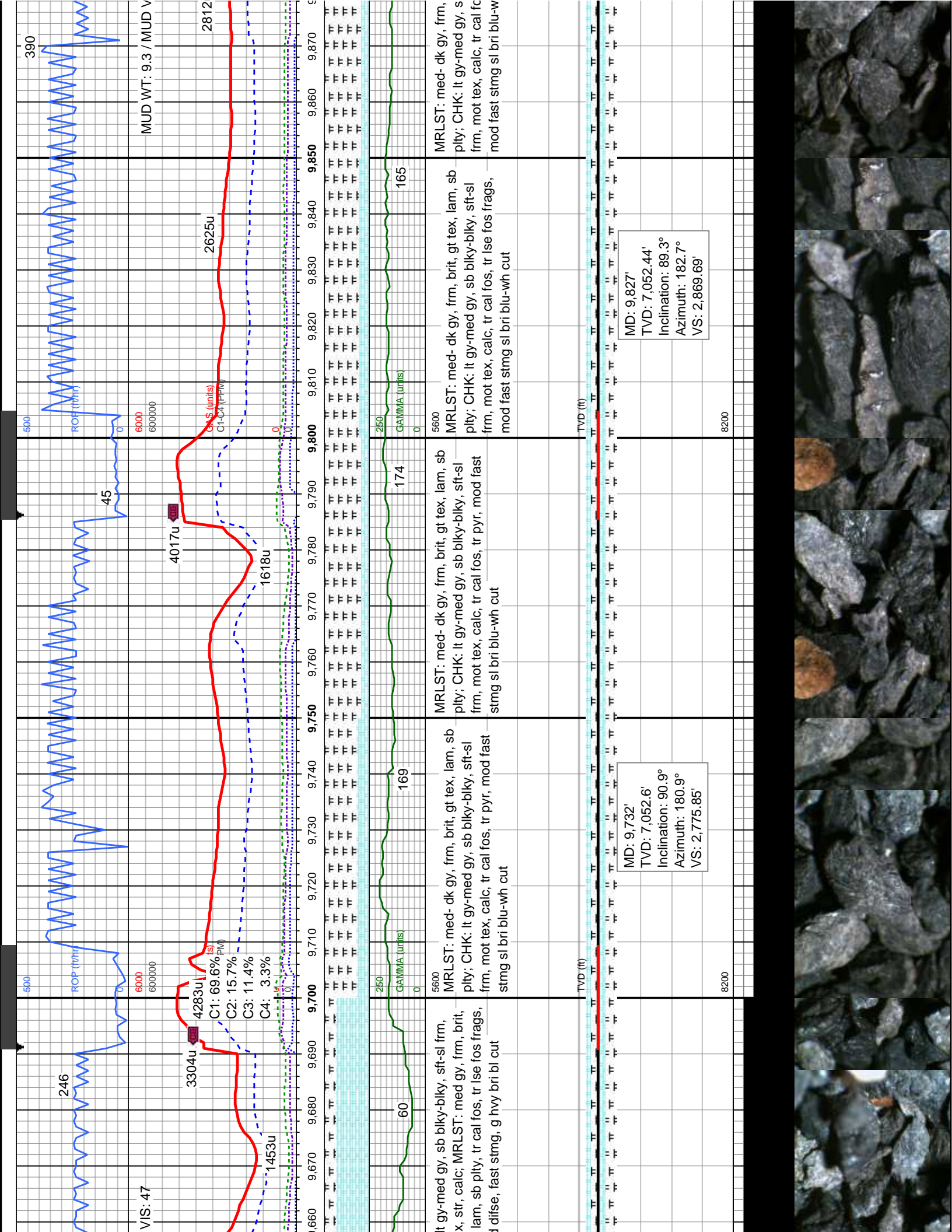
8200

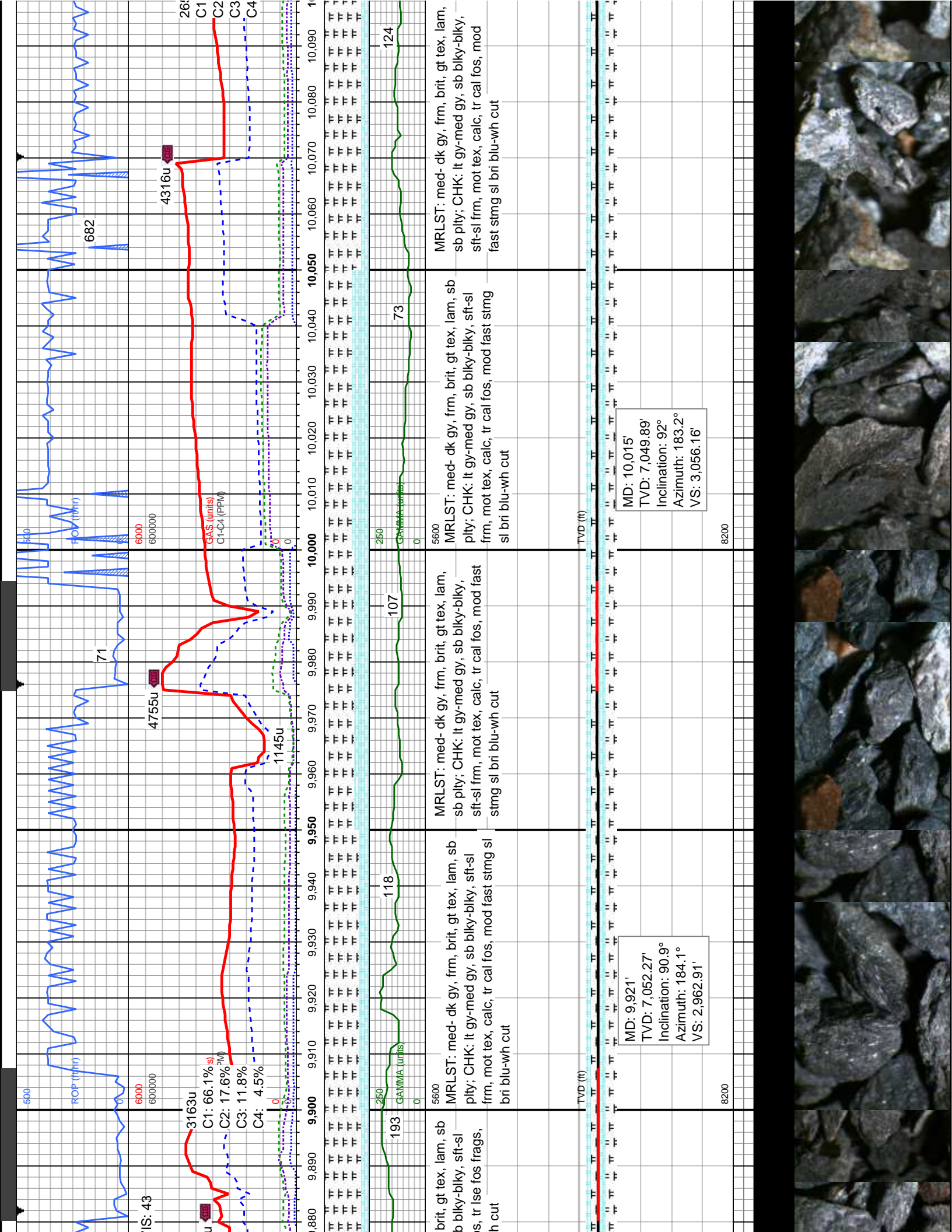


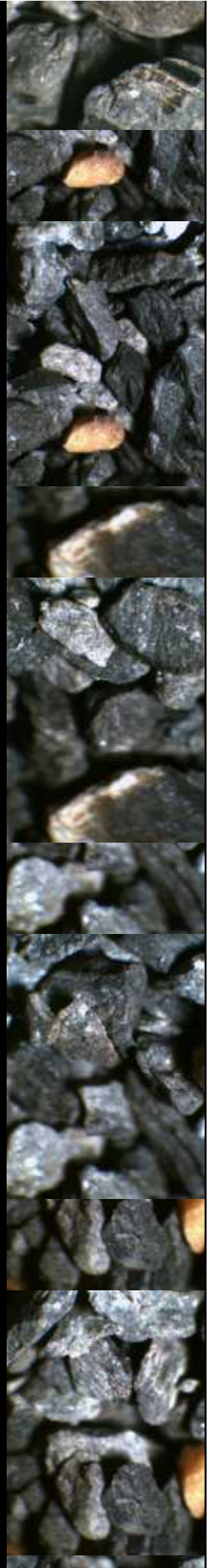
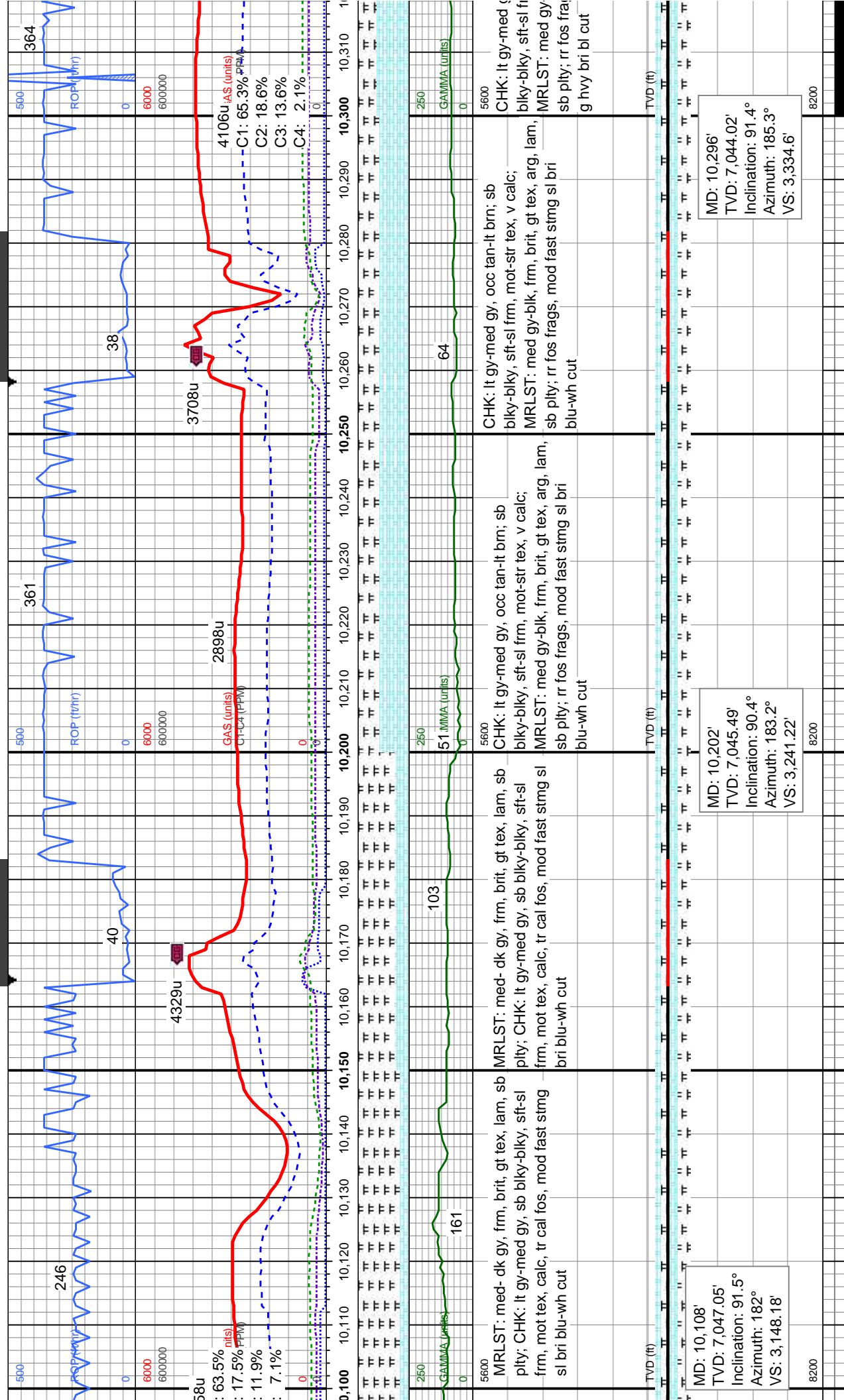


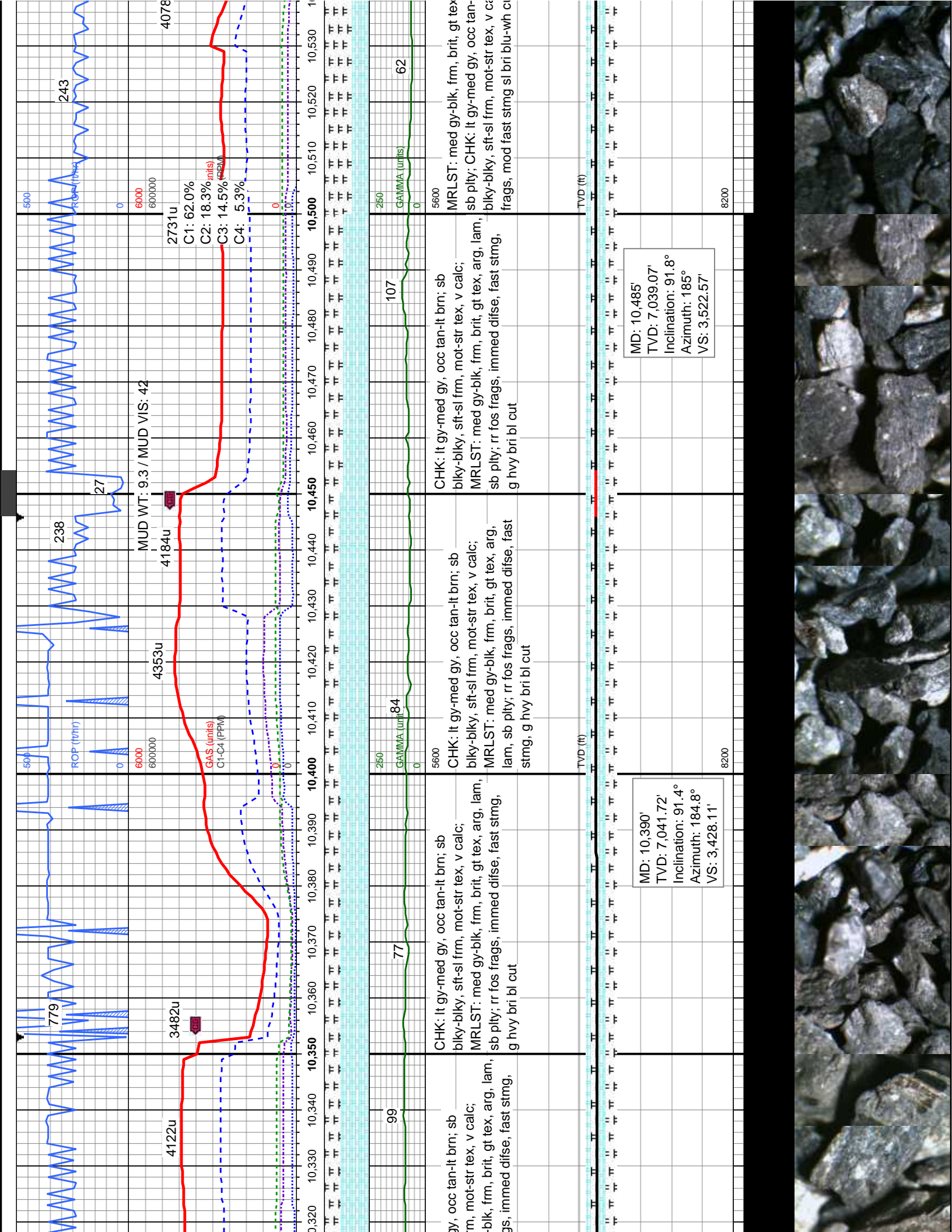


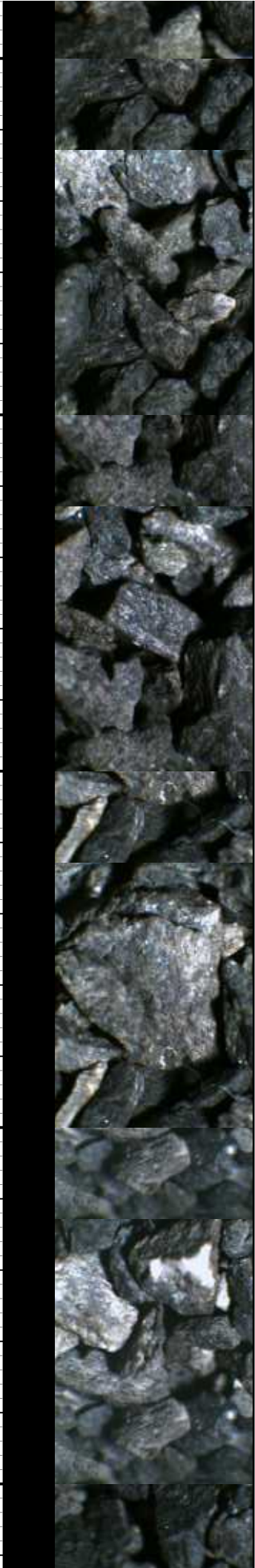
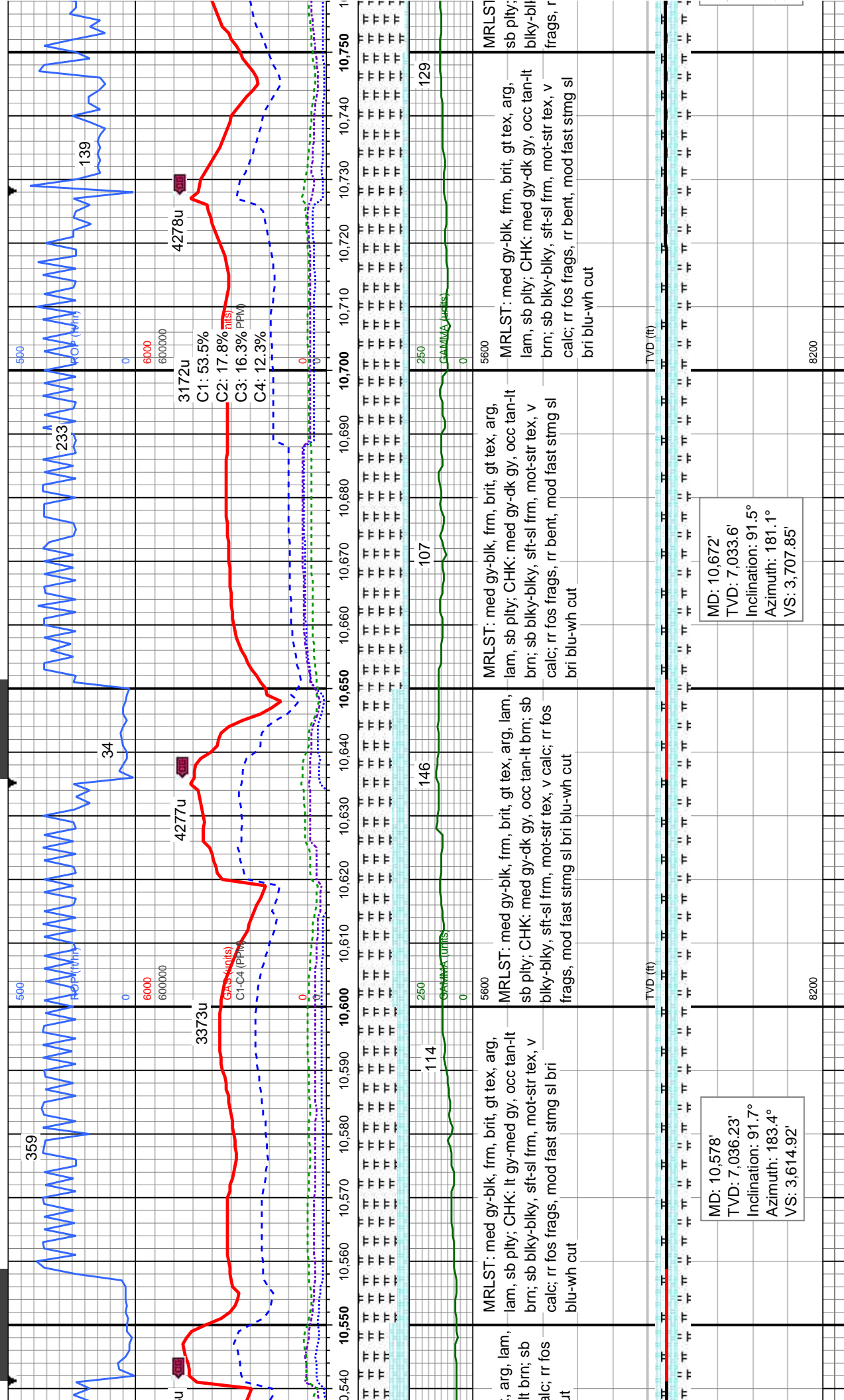


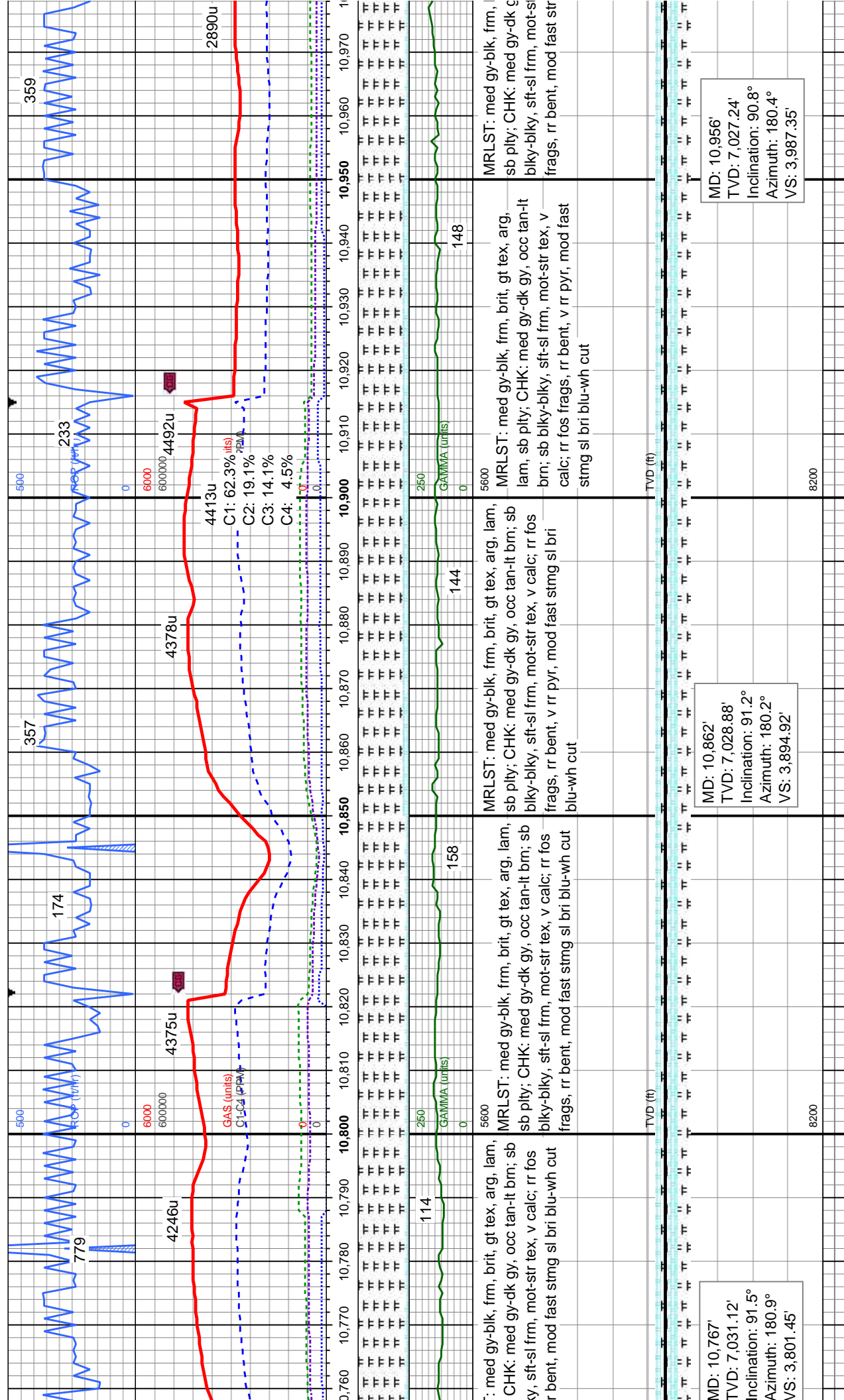


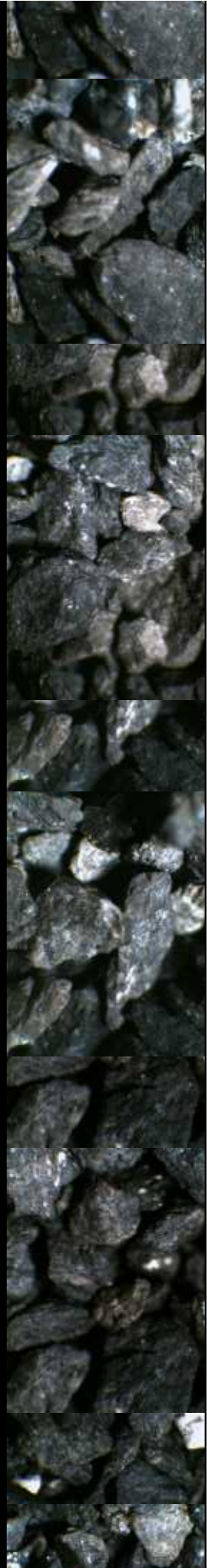
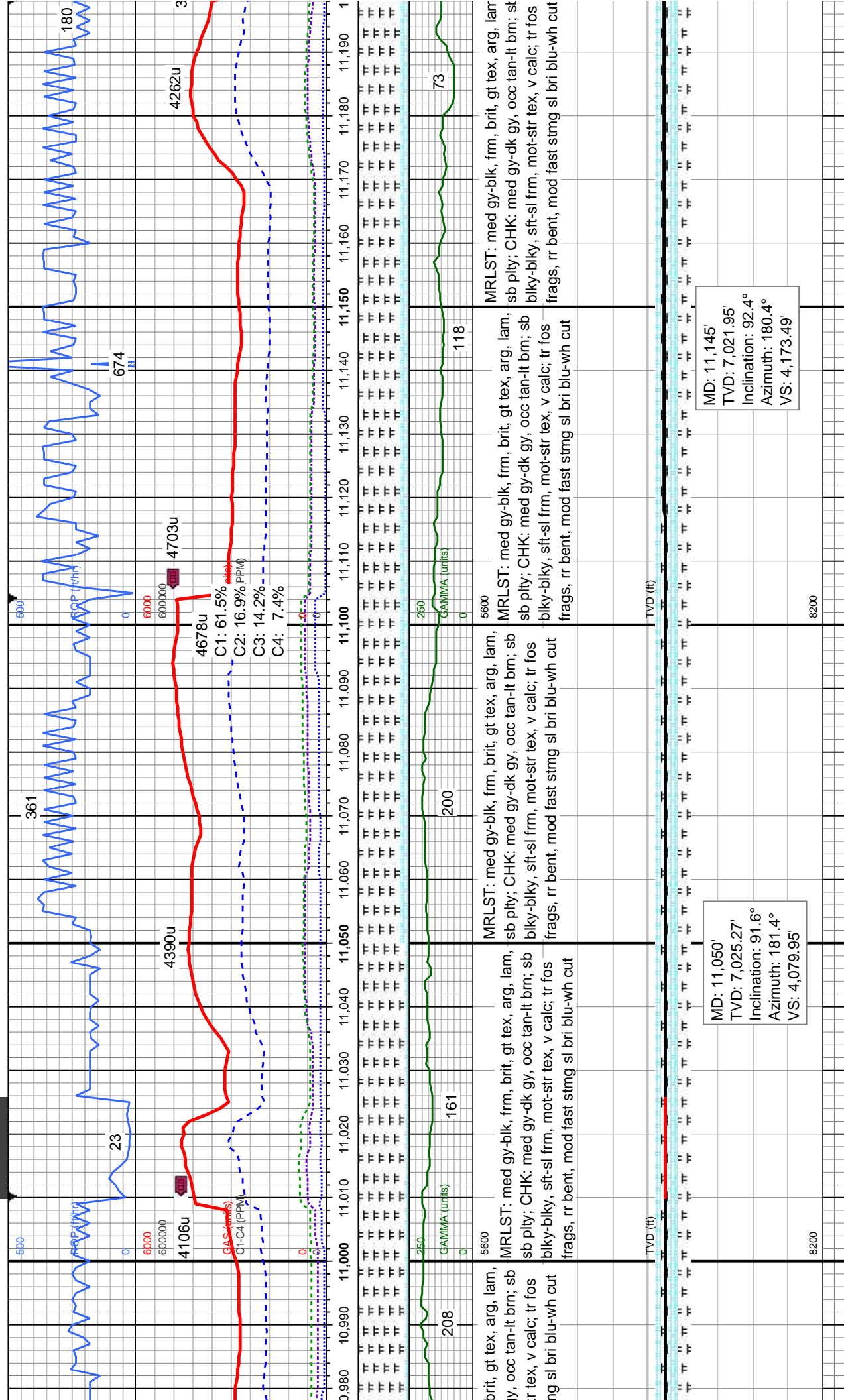


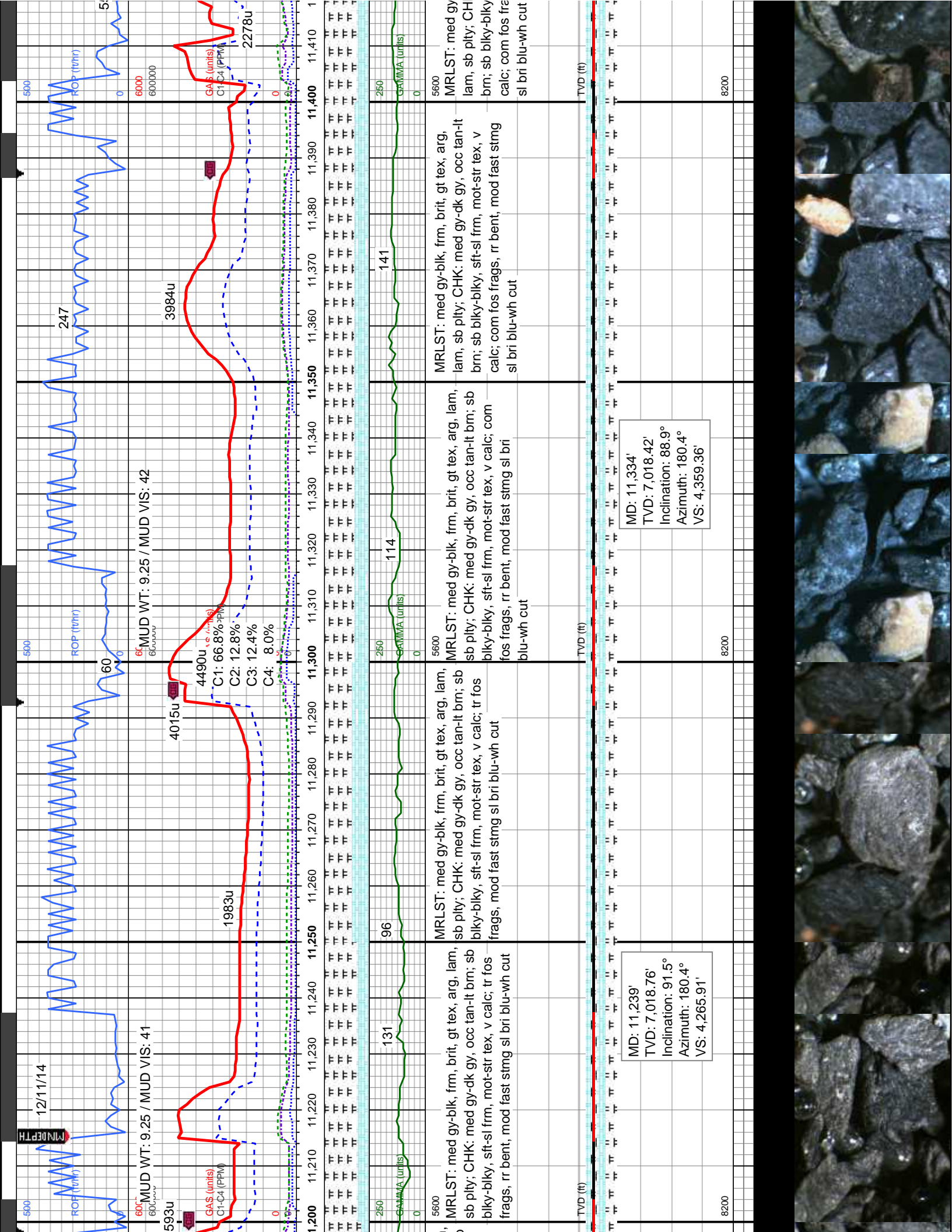


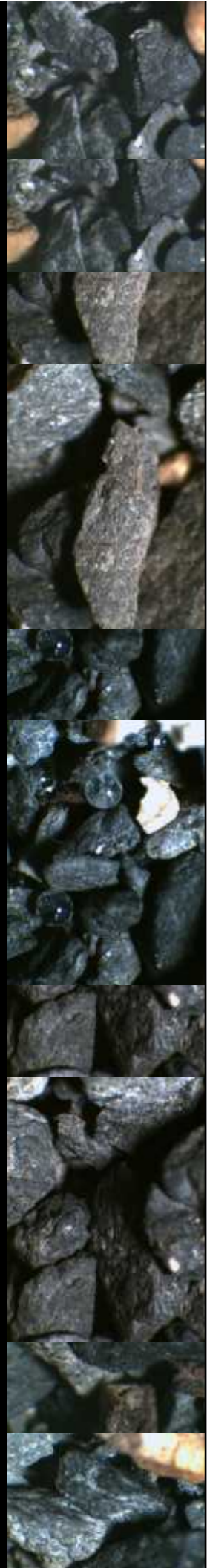
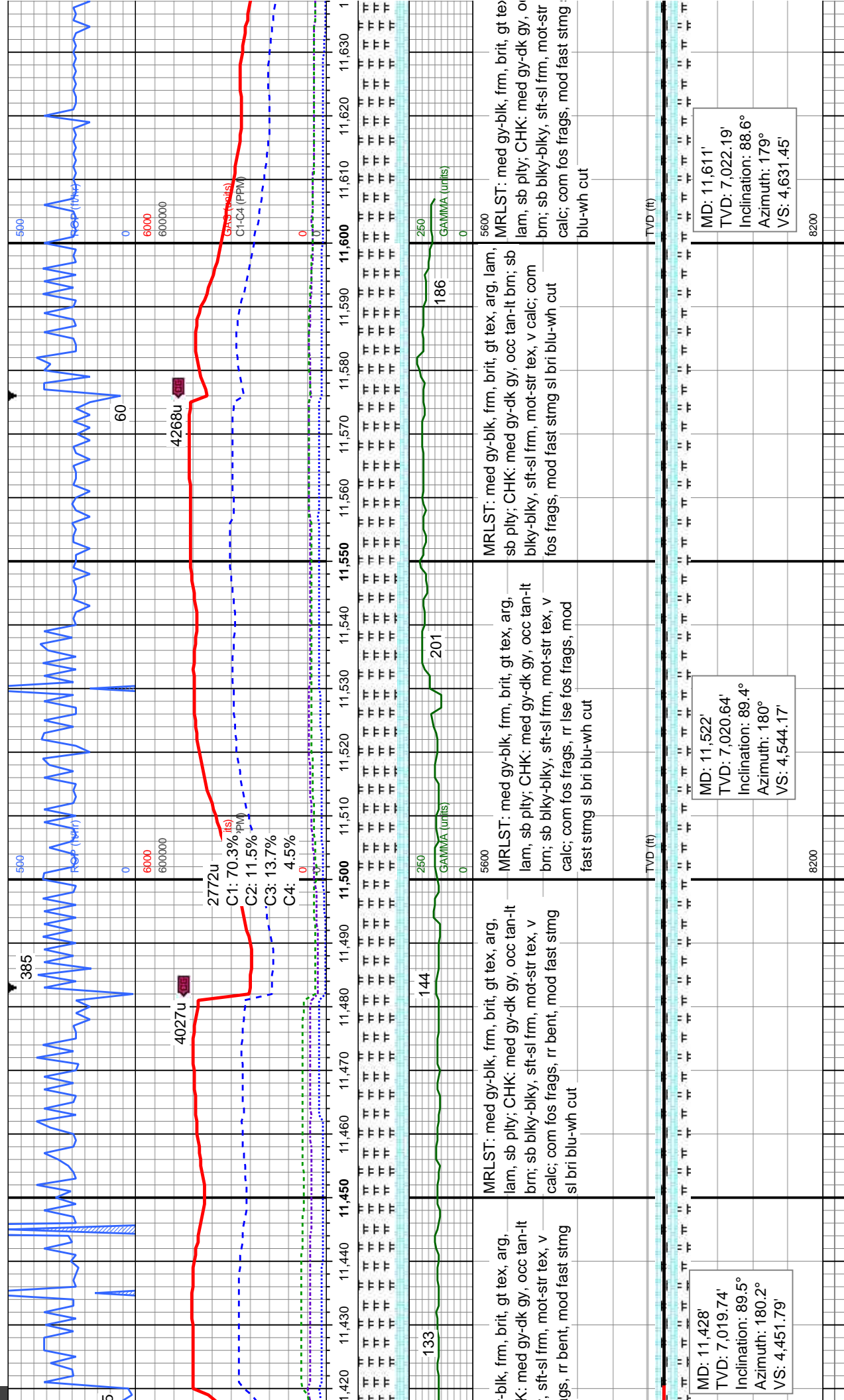












MD: 11,611'
TVD: 7,022.19'
Inclination: 88.6°
Azimuth: 179°
VS: 4,631.45'

MD: 11,522'
TVD: 7,020.64'
Inclination: 89.4°
Azimuth: 180°
VS: 4,544.17'

MD: 11,428'
TVD: 7,019.74'
Inclination: 89.5°
Azimuth: 180.2°
VS: 4,451.79'

