

# Bayswater Exploration & Production, LLC

Well Name: **Kaiser C-10HN**

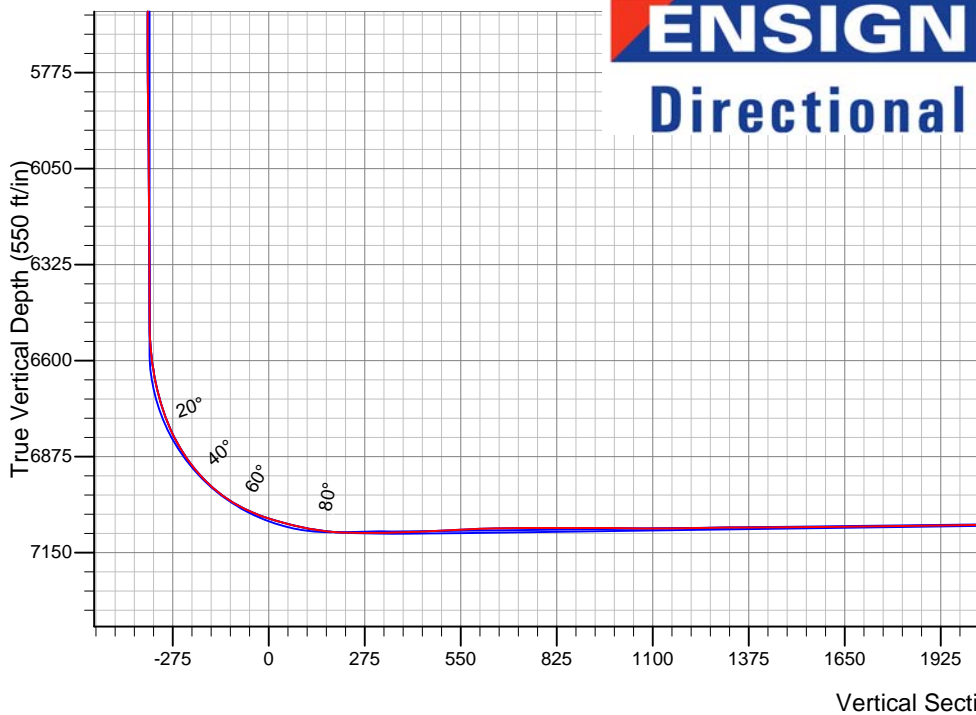
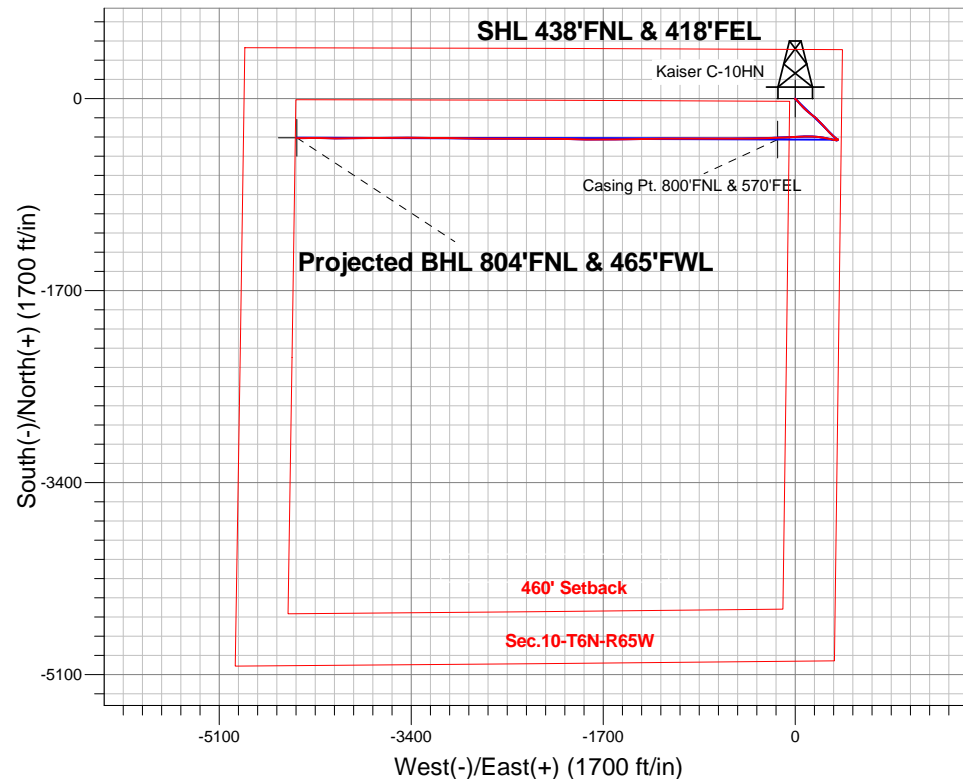
Surface Location: Kaiser 10-D Pad Sec.10-T6N-R65W  
North American Datum 1983 , US State Plane 1983 , Colorado Northern Zone

Ground Elevation: 4801.0

+N/-S	+E/-W	Northing	Easting	Latitude	Longitude	Slot
0.0	0.0	1428803.00	3238761.54	40.507292	-104.641347	
RKB - 22.5 WELL @ 4823.5ft (RKB - 22.5)						

## FINAL SURVEY

Projected Bottom Hole Location  
11683'MD 7041'TVD 350'S & 4414'W of SHL  
91.2 degree Incl @ 269.0 degree AZM



Kaiser 10-D Pad Sec.10-T6N-R65W  
Kaiser C-10HN  
Wellbore #1  
14:59, September 29 2014

### ANNOTATIONS

No annotation data is available.

### LEGEND

- △ Kaiser C-10HN, Wellbore #1, Plan #2 (8-7-14) V0
- ⊕ Kaiser C-10HN, Wellbore #1, Plan #3 (9-25-14) V0
- Wellbore #1
- Survey #1

BHL 804'FNL & 465'FWL



# **Bayswater Exploration & Production, LLC**

**SEC.10-T6N-R65W**

**Kaiser 10-D Pad Sec.10-T6N-R65W**

**Kaiser C-10HN**

**Wellbore #1**

**Survey: Survey #1**

## **Standard Survey Report**

**29 September, 2014**



**BAYSWATER**  
**EXPLORATION & PRODUCTION, LLC**

<b>Company:</b>	Bayswater Exploration & Production, LLC	<b>Local Co-ordinate Reference:</b>	Well Kaiser C-10HN
<b>Project:</b>	SEC.10-T6N-R65W	<b>TVD Reference:</b>	WELL @ 4823.5ft (RKB - 22.5)
<b>Site:</b>	Kaiser 10-D Pad Sec.10-T6N-R65W	<b>MD Reference:</b>	WELL @ 4823.5ft (RKB - 22.5)
<b>Well:</b>	Kaiser C-10HN	<b>North Reference:</b>	True
<b>Wellbore:</b>	Wellbore #1	<b>Survey Calculation Method:</b>	Minimum Curvature
<b>Design:</b>	Wellbore #1	<b>Database:</b>	Landmark

<b>Project</b>	SEC.10-T6N-R65W		
<b>Map System:</b>	US State Plane 1983	<b>System Datum:</b>	Mean Sea Level
<b>Geo Datum:</b>	North American Datum 1983		Using Well Reference Point
<b>Map Zone:</b>	Colorado Northern Zone		Using geodetic scale factor

<b>Site</b>	Kaiser 10-D Pad Sec.10-T6N-R65W		
<b>Site Position:</b>		<b>Northing:</b>	1,428,828.36ft
<b>From:</b>	Lat/Long	<b>Easting:</b>	3,238,745.72ft
<b>Position Uncertainty:</b>	0.0 ft	<b>Slot Radius:</b>	"
		<b>Latitude:</b>	40.507362
		<b>Longitude:</b>	-104.641403
		<b>Grid Convergence:</b>	0.55 °

<b>Well</b>	Kaiser C-10HN		
<b>Well Position</b>	<b>+N/-S</b>	0.0 ft	<b>Northing:</b>
	<b>+E/-W</b>	0.0 ft	<b>Easting:</b>
<b>Position Uncertainty</b>	0.0 ft	<b>Wellhead Elevation:</b>	ft
		<b>Latitude:</b>	40.507292
		<b>Longitude:</b>	-104.641347
		<b>Ground Level:</b>	4,801.0ft

<b>Wellbore</b>	Wellbore #1		
<b>Magnetics</b>	<b>Model Name</b>	<b>Sample Date</b>	<b>Declination (°)</b>
	IGRF2010	9/25/2014	8.36
			<b>Dip Angle (°)</b>
			67.04
			<b>Field Strength (nT)</b>
			52,855

<b>Design</b>	Wellbore #1		
<b>Audit Notes:</b>			
<b>Version:</b>	1.0	<b>Phase:</b>	ACTUAL
		<b>Tie On Depth:</b>	0.0
<b>Vertical Section:</b>	<b>Depth From (TVD) (ft)</b>	<b>+N/-S (ft)</b>	<b>+E/-W (ft)</b>
	0.0	0.0	0.0
			<b>Direction (°)</b>
			265.51

<b>Survey Program</b>	<b>Date</b>	9/29/2014		
<b>From (ft)</b>	<b>To (ft)</b>	<b>Survey (Wellbore)</b>	<b>Tool Name</b>	<b>Description</b>
131.0	11,683.0	Survey #1 (Wellbore #1)	MWD	MWD - Standard

<b>Survey</b>										
<b>Measured Depth (ft)</b>	<b>Inclination (°)</b>	<b>Azimuth (°)</b>	<b>Vertical Depth (ft)</b>	<b>+N/-S (ft)</b>	<b>+E/-W (ft)</b>	<b>Vertical Section (ft)</b>	<b>Dogleg Rate (°/100ft)</b>	<b>Build Rate (°/100ft)</b>	<b>Turn Rate (°/100ft)</b>	
0.0	0.00	0.00	0.0	0.0	0.0	0.0	0.00	0.00	0.00	
1.0	0.00	46.90	1.0	0.0	0.0	0.0	0.00	0.00	0.00	
<b>SHL 438'FNL &amp; 418'FEL</b>										
131.0	0.20	46.90	131.0	0.2	0.2	-0.2	0.15	0.15	0.00	
223.0	0.10	128.30	223.0	0.2	0.3	-0.4	0.23	-0.11	88.48	
315.0	0.20	93.50	315.0	0.2	0.6	-0.6	0.14	0.11	-37.83	
407.0	0.40	76.10	407.0	0.2	1.0	-1.1	0.24	0.22	-18.91	
499.0	0.30	139.40	499.0	0.1	1.5	-1.5	0.41	-0.11	68.80	
592.0	0.20	190.70	592.0	-0.2	1.6	-1.6	0.25	-0.11	55.16	
684.0	0.30	162.90	684.0	-0.6	1.7	-1.6	0.17	0.11	-30.22	
708.0	0.50	176.50	708.0	-0.8	1.7	-1.6	0.92	0.83	56.67	
827.0	0.70	166.60	827.0	-2.0	1.9	-1.7	0.19	0.17	-8.32	
922.0	0.60	168.70	922.0	-3.1	2.1	-1.9	0.11	-0.11	2.21	

<b>Company:</b>	Bayswater Exploration & Production, LLC	<b>Local Co-ordinate Reference:</b>	Well Kaiser C-10HN
<b>Project:</b>	SEC.10-T6N-R65W	<b>TVD Reference:</b>	WELL @ 4823.5ft (RKB - 22.5)
<b>Site:</b>	Kaiser 10-D Pad Sec.10-T6N-R65W	<b>MD Reference:</b>	WELL @ 4823.5ft (RKB - 22.5)
<b>Well:</b>	Kaiser C-10HN	<b>North Reference:</b>	True
<b>Wellbore:</b>	Wellbore #1	<b>Survey Calculation Method:</b>	Minimum Curvature
<b>Design:</b>	Wellbore #1	<b>Database:</b>	Landmark

## Survey

Measured Depth (ft)	Inclination (°)	Azimuth (°)	Vertical Depth (ft)	+N/-S (ft)	+E/-W (ft)	Vertical Section (ft)	Dogleg Rate (°/100ft)	Build Rate (°/100ft)	Turn Rate (°/100ft)
1,015.0	0.70	222.10	1,015.0	-4.0	1.9	-1.5	0.64	0.11	57.42
1,107.0	1.00	152.20	1,107.0	-5.1	1.8	-1.4	1.09	0.33	-75.98
1,199.0	2.00	120.70	1,198.9	-6.6	3.6	-3.1	1.37	1.09	-34.24
1,291.0	1.80	123.20	1,290.9	-8.2	6.2	-5.5	0.24	-0.22	2.72
1,384.0	2.90	121.90	1,383.8	-10.3	9.4	-8.6	1.18	1.18	-1.40
1,476.0	4.00	132.70	1,475.6	-13.7	13.7	-12.6	1.38	1.20	11.74
1,568.0	5.50	139.30	1,567.3	-19.2	19.0	-17.4	1.73	1.63	7.17
1,660.0	7.20	140.40	1,658.8	-27.0	25.5	-23.3	1.85	1.85	1.20
1,721.0	8.00	142.70	1,719.2	-33.3	30.5	-27.8	1.40	1.31	3.77
1,813.0	8.70	137.90	1,810.2	-43.6	39.1	-35.6	1.07	0.76	-5.22
1,906.0	7.70	136.40	1,902.3	-53.3	48.1	-43.8	1.10	-1.08	-1.61
1,998.0	8.70	137.80	1,993.3	-62.9	57.0	-51.9	1.11	1.09	1.52
2,090.0	8.20	135.80	2,084.4	-72.8	66.3	-60.4	0.63	-0.54	-2.17
2,182.0	9.00	136.70	2,175.3	-82.7	75.8	-69.1	0.88	0.87	0.98
2,275.0	8.00	133.20	2,267.3	-92.4	85.5	-78.0	1.21	-1.08	-3.76
2,369.0	9.00	134.10	2,360.3	-102.0	95.5	-87.3	1.07	1.06	0.96
2,464.0	8.20	130.40	2,454.2	-111.6	106.0	-97.0	1.02	-0.84	-3.89
2,591.0	6.90	125.30	2,580.1	-121.9	119.2	-109.3	1.15	-1.02	-4.02
2,687.0	8.40	126.30	2,675.2	-129.3	129.5	-119.0	1.57	1.56	1.04
2,782.0	9.30	128.30	2,769.1	-138.2	141.1	-129.9	1.00	0.95	2.11
2,877.0	9.10	128.40	2,862.9	-147.6	153.0	-141.0	0.21	-0.21	0.11
2,972.0	8.90	129.90	2,956.7	-157.0	164.6	-151.8	0.32	-0.21	1.58
3,068.0	8.70	130.90	3,051.6	-166.5	175.8	-162.2	0.26	-0.21	1.04
3,163.0	7.50	130.70	3,145.6	-175.3	185.9	-171.6	1.26	-1.26	-0.21
3,258.0	8.20	139.00	3,239.7	-184.4	195.0	-180.0	1.40	0.74	8.74
3,353.0	7.20	138.10	3,333.9	-194.0	203.4	-187.6	1.06	-1.05	-0.95
3,449.0	7.10	138.30	3,429.1	-202.9	211.4	-194.9	0.11	-0.10	0.21
3,544.0	7.70	133.50	3,523.3	-211.7	219.9	-202.7	0.91	0.63	-5.05
3,639.0	8.10	135.50	3,617.4	-220.8	229.2	-211.3	0.51	0.42	2.11
3,734.0	7.70	133.70	3,711.5	-230.0	238.5	-219.8	0.50	-0.42	-1.89
3,830.0	8.20	135.50	3,806.6	-239.3	248.0	-228.5	0.58	0.52	1.88
3,925.0	8.90	137.80	3,900.6	-249.6	257.7	-237.4	0.82	0.74	2.42
4,020.0	9.70	140.20	3,994.3	-261.2	267.7	-246.5	0.94	0.84	2.53
4,115.0	10.10	140.90	4,087.9	-273.8	278.1	-255.8	0.44	0.42	0.74
4,210.0	10.60	135.80	4,181.4	-286.5	289.4	-266.1	1.10	0.53	-5.37
4,306.0	8.50	134.10	4,276.0	-297.8	300.7	-276.5	2.21	-2.19	-1.77
4,401.0	8.60	135.00	4,370.0	-307.7	310.8	-285.7	0.18	0.11	0.95
4,496.0	7.70	132.70	4,464.0	-317.0	320.5	-294.7	1.01	-0.95	-2.42
4,592.0	7.70	134.60	4,559.1	-325.9	329.8	-303.3	0.27	0.00	1.98
4,687.0	7.90	133.90	4,653.3	-334.9	339.0	-311.8	0.23	0.21	-0.74
4,782.0	7.20	130.60	4,747.4	-343.3	348.2	-320.3	0.87	-0.74	-3.47
4,878.0	6.20	127.60	4,842.8	-350.4	356.9	-328.4	1.10	-1.04	-3.13
4,973.0	4.50	120.00	4,937.4	-355.4	364.2	-335.3	1.93	-1.79	-8.00
5,068.0	3.40	112.80	5,032.1	-358.3	370.0	-340.9	1.27	-1.16	-7.58
5,163.0	2.10	127.00	5,127.0	-360.5	374.0	-344.7	1.53	-1.37	14.95
5,258.0	1.10	157.50	5,222.0	-362.4	375.8	-346.3	1.35	-1.05	32.11
5,354.0	0.80	122.60	5,318.0	-363.6	376.7	-347.1	0.66	-0.31	-36.35
5,449.0	0.80	299.50	5,413.0	-363.6	376.6	-347.0	1.68	0.00	186.21
5,544.0	0.70	352.90	5,508.0	-362.7	376.0	-346.5	0.72	-0.11	56.21
5,640.0	1.10	24.40	5,604.0	-361.3	376.3	-346.9	0.65	0.42	32.81
5,735.0	0.60	309.00	5,698.9	-360.1	376.3	-347.0	1.17	-0.53	-79.37
5,830.0	0.50	267.70	5,793.9	-359.8	375.5	-346.2	0.42	-0.11	-43.47
5,925.0	0.60	259.20	5,888.9	-360.0	374.6	-345.3	0.14	0.11	-8.95
6,020.0	0.70	239.70	5,983.9	-360.3	373.6	-344.3	0.25	0.11	-20.53

<b>Company:</b>	Bayswater Exploration & Production, LLC	<b>Local Co-ordinate Reference:</b>	Well Kaiser C-10HN
<b>Project:</b>	SEC.10-T6N-R65W	<b>TVD Reference:</b>	WELL @ 4823.5ft (RKB - 22.5)
<b>Site:</b>	Kaiser 10-D Pad Sec.10-T6N-R65W	<b>MD Reference:</b>	WELL @ 4823.5ft (RKB - 22.5)
<b>Well:</b>	Kaiser C-10HN	<b>North Reference:</b>	True
<b>Wellbore:</b>	Wellbore #1	<b>Survey Calculation Method:</b>	Minimum Curvature
<b>Design:</b>	Wellbore #1	<b>Database:</b>	Landmark

Survey

Measured Depth (ft)	Inclination (°)	Azimuth (°)	Vertical Depth (ft)	+N/-S (ft)	+E/-W (ft)	Vertical Section (ft)	Dogleg Rate (°/100ft)	Build Rate (°/100ft)	Turn Rate (°/100ft)
6,116.0	0.70	223.40	6,079.9	-361.1	372.7	-343.3	0.21	0.00	-16.98
6,211.0	0.70	206.80	6,174.9	-362.0	372.0	-342.6	0.21	0.00	-17.47
6,306.0	1.10	191.90	6,269.9	-363.4	371.6	-342.0	0.48	0.42	-15.68
6,401.0	1.10	188.70	6,364.9	-365.2	371.3	-341.6	0.06	0.00	-3.37
6,497.0	1.30	180.50	6,460.9	-367.2	371.1	-341.2	0.27	0.21	-8.54
6,544.0	1.50	212.80	6,507.9	-368.3	370.8	-340.8	1.71	0.43	68.72
6,594.0	4.50	270.50	6,557.8	-368.8	368.5	-338.5	7.82	6.00	115.40
6,641.0	7.90	279.30	6,604.5	-368.3	363.4	-333.5	7.49	7.23	18.72
6,689.0	10.90	276.30	6,651.9	-367.2	355.7	-325.8	6.33	6.25	-6.25
6,736.0	15.10	280.70	6,697.6	-365.6	345.2	-315.6	9.17	8.94	9.36
6,784.0	19.30	282.40	6,743.5	-362.7	331.3	-301.9	8.81	8.75	3.54
6,831.0	23.90	282.60	6,787.2	-359.0	314.4	-285.4	9.79	9.79	0.43
6,880.0	29.20	282.40	6,831.0	-354.2	293.1	-264.4	10.82	10.82	-0.41
6,927.0	34.40	281.40	6,870.9	-349.2	268.8	-240.7	11.12	11.06	-2.13
6,975.0	39.70	278.90	6,909.2	-344.1	240.4	-212.7	11.48	11.04	-5.21
7,022.0	45.50	276.60	6,943.8	-339.8	208.9	-181.6	12.78	12.34	-4.89
7,070.0	51.40	274.00	6,975.6	-336.6	173.1	-146.3	12.94	12.29	-5.42
7,117.0	57.90	271.40	7,002.8	-334.8	134.8	-108.2	14.55	13.83	-5.53
7,165.0	64.30	268.90	7,026.0	-334.7	92.8	-66.4	14.09	13.33	-5.21
7,212.0	69.80	267.50	7,044.3	-336.1	49.6	-23.2	12.02	11.70	-2.98
7,261.0	73.70	267.10	7,059.7	-338.3	3.1	23.3	8.00	7.96	-0.82
7,308.0	76.70	266.80	7,071.7	-340.7	-42.2	68.8	6.41	6.38	-0.64
7,356.0	79.30	267.30	7,081.6	-343.1	-89.1	115.7	5.51	5.42	1.04
7,405.0	83.70	268.20	7,088.9	-345.0	-137.5	164.1	9.16	8.98	1.84
7,468.0	88.60	267.10	7,093.1	-347.6	-200.3	226.9	7.97	7.78	-1.75
7,562.0	90.90	268.50	7,093.5	-351.2	-294.2	320.8	2.86	2.45	1.49
7,657.0	92.20	269.70	7,091.0	-352.7	-389.2	415.6	1.86	1.37	1.26
7,751.0	93.30	270.10	7,086.4	-352.9	-483.1	509.2	1.25	1.17	0.43
7,845.0	92.00	269.90	7,082.1	-352.9	-577.0	602.8	1.40	-1.38	-0.21
7,940.0	90.70	269.90	7,079.9	-353.0	-671.9	697.5	1.37	-1.37	0.00
8,034.0	89.60	270.10	7,079.6	-353.0	-765.9	791.2	1.19	-1.17	0.21
8,129.0	90.40	269.60	7,079.6	-353.3	-860.9	885.9	0.99	0.84	-0.53
8,223.0	89.30	270.40	7,079.9	-353.3	-954.9	979.7	1.45	-1.17	0.85
8,318.0	89.80	269.60	7,080.6	-353.3	-1,049.9	1,074.4	0.99	0.53	-0.84
8,412.0	90.40	269.20	7,080.4	-354.3	-1,143.9	1,168.1	0.77	0.64	-0.43
8,507.0	91.30	269.00	7,079.0	-355.7	-1,238.9	1,262.9	0.97	0.95	-0.21
8,601.0	90.10	269.70	7,077.9	-356.8	-1,332.9	1,356.7	1.48	-1.28	0.74
8,695.0	90.40	269.40	7,077.5	-357.6	-1,426.9	1,450.5	0.45	0.32	-0.32
8,789.0	90.70	268.30	7,076.6	-359.4	-1,520.9	1,544.3	1.21	0.32	-1.17
8,883.0	90.30	268.90	7,075.8	-361.7	-1,614.8	1,638.2	0.77	-0.43	0.64
8,978.0	90.30	270.40	7,075.3	-362.3	-1,709.8	1,732.9	1.58	0.00	1.58
9,072.0	91.00	270.10	7,074.2	-361.9	-1,803.8	1,826.6	0.81	0.74	-0.32
9,167.0	91.50	271.90	7,072.1	-360.2	-1,898.8	1,921.1	1.97	0.53	1.89
9,261.0	90.60	271.20	7,070.4	-357.7	-1,992.7	2,014.6	1.21	-0.96	-0.74
9,356.0	91.00	270.30	7,069.1	-356.5	-2,087.7	2,109.2	1.04	0.42	-0.95
9,450.0	91.80	270.60	7,066.8	-355.7	-2,181.7	2,202.8	0.91	0.85	0.32
9,545.0	90.70	270.10	7,064.7	-355.1	-2,276.7	2,297.5	1.27	-1.16	-0.53
9,639.0	91.90	270.10	7,062.6	-355.0	-2,370.6	2,391.1	1.28	1.28	0.00
9,734.0	90.40	270.30	7,060.7	-354.6	-2,465.6	2,485.8	1.59	-1.58	0.21
9,828.0	89.80	270.40	7,060.5	-354.1	-2,559.6	2,579.5	0.65	-0.64	0.11
9,923.0	91.20	270.40	7,059.7	-353.4	-2,654.6	2,674.1	1.47	1.47	0.00
10,017.0	90.00	270.40	7,058.7	-352.8	-2,748.6	2,767.8	1.28	-1.28	0.00
10,112.0	90.80	270.10	7,058.0	-352.3	-2,843.6	2,862.4	0.90	0.84	-0.32
10,206.0	90.70	271.20	7,056.8	-351.3	-2,937.6	2,956.0	1.17	-0.11	1.17

<b>Company:</b>	Bayswater Exploration & Production, LLC	<b>Local Co-ordinate Reference:</b>	Well Kaiser C-10HN
<b>Project:</b>	SEC.10-T6N-R65W	<b>TVD Reference:</b>	WELL @ 4823.5ft (RKB - 22.5)
<b>Site:</b>	Kaiser 10-D Pad Sec.10-T6N-R65W	<b>MD Reference:</b>	WELL @ 4823.5ft (RKB - 22.5)
<b>Well:</b>	Kaiser C-10HN	<b>North Reference:</b>	True
<b>Wellbore:</b>	Wellbore #1	<b>Survey Calculation Method:</b>	Minimum Curvature
<b>Design:</b>	Wellbore #1	<b>Database:</b>	Landmark

Survey

Measured Depth (ft)	Inclination (°)	Azimuth (°)	Vertical Depth (ft)	+N/-S (ft)	+E/-W (ft)	Vertical Section (ft)	Dogleg Rate (°/100ft)	Build Rate (°/100ft)	Turn Rate (°/100ft)
10,301.0	89.40	270.40	7,056.7	-349.9	-3,032.6	3,050.6	1.61	-1.37	-0.84
10,395.0	90.90	271.00	7,056.5	-348.8	-3,126.5	3,144.2	1.72	1.60	0.64
10,489.0	90.00	270.30	7,055.7	-347.7	-3,220.5	3,237.9	1.21	-0.96	-0.74
10,584.0	90.60	270.40	7,055.2	-347.2	-3,315.5	3,332.5	0.64	0.63	0.11
10,678.0	90.40	270.30	7,054.4	-346.6	-3,409.5	3,426.2	0.24	-0.21	-0.11
10,773.0	90.80	269.90	7,053.4	-346.4	-3,504.5	3,520.9	0.60	0.42	-0.42
10,867.0	91.50	269.20	7,051.5	-347.2	-3,598.5	3,614.6	1.05	0.74	-0.74
10,962.0	90.90	270.10	7,049.5	-347.7	-3,693.5	3,709.4	1.14	-0.63	0.95
11,056.0	89.90	269.60	7,048.9	-348.0	-3,787.5	3,803.1	1.19	-1.06	-0.53
11,151.0	90.20	269.00	7,048.8	-349.1	-3,882.5	3,897.9	0.71	0.32	-0.63
11,244.0	91.50	268.90	7,047.4	-350.8	-3,975.4	3,990.7	1.40	1.40	-0.11
11,339.0	91.20	271.30	7,045.2	-350.7	-4,070.4	4,085.4	2.55	-0.32	2.53
11,433.0	89.90	270.80	7,044.3	-349.0	-4,164.4	4,178.9	1.48	-1.38	-0.53
11,528.0	90.50	269.90	7,043.9	-348.4	-4,259.4	4,273.6	1.14	0.63	-0.95
11,622.0	91.20	269.00	7,042.6	-349.3	-4,353.4	4,367.3	1.21	0.74	-0.96
11,683.0	91.20	269.00	7,041.3	-350.3	-4,414.3	4,428.2	0.00	0.00	0.00
BHL 800'FNL & 465'FWL									

Checked By: \_\_\_\_\_ Approved By: \_\_\_\_\_ Date: \_\_\_\_\_