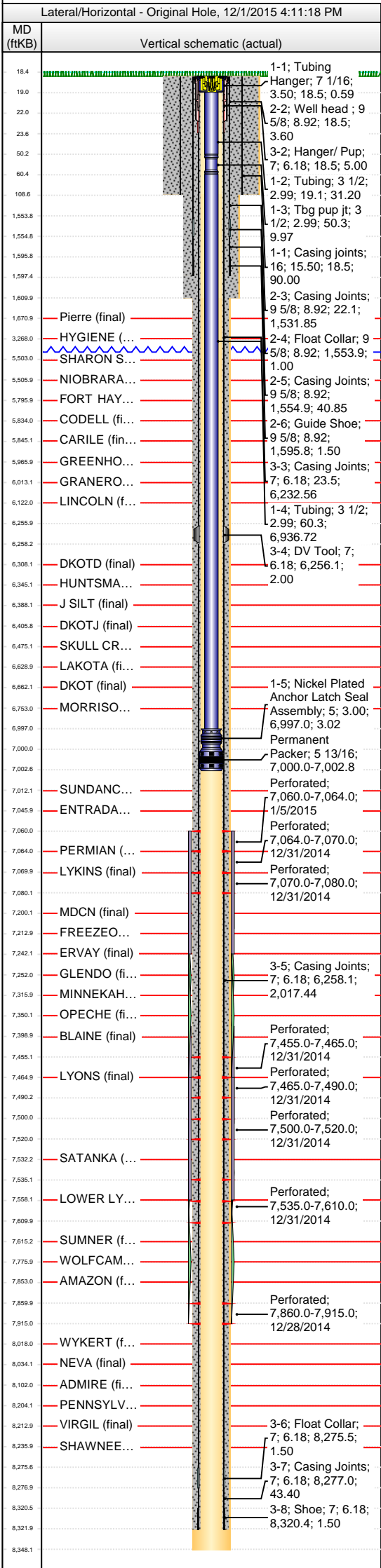




Lease Review All - CR
Well Name: HORSETAIL 19N-1924M-R

API Number	WPC ID	Well Permit Number	Field Name	County	State
051234063000	1CO0761135		Wildcat	Weld	CO
Well Configuration Type	Orig KB Elv (ft)	Ground Elevation (ft)	Casing Flange Elevation (ft)	Tubing Head Elevation (ft)	Total Depth (ftKB)
Lateral/Horizontal	4,767.50	4,749.00			8,348.0
Original Spud Date	Completion Date	Asset Group	Responsible Engineer	N/S Dist (ft)	N/S Ref
12/6/2014	4/21/2015	Redtail	Adrian Reece	660.0	FSL
E/W Dist (ft)	E/W Ref				
2,616.0	FEL				
Lot	Quarter 1	Quarter 2	Quarter 3	Quarter 4	Section
	SW	SE			19
Section Suffix	Section Type	Township	Township N/S Dir	Range	Range E/W Dir
		10	N	57	W
Meridian					



Wellbore Sections									
Section Des		Wellbore Name		Start Date	Size (in)	Act Top (ftKB)	Act Btm (ftKB)		
Conductor		Original Hole		11/29/2014	24	18.5	108.5		
Surface		Original Hole		12/6/2014	13 1/2	108.5	1,610.0		
Intermediate		Original Hole		12/7/2014	8 3/4	1,610.0	8,348.0		
Conductor Pipe, 108.5ftKB									
OD (in)	ID (in)	Wt (lb/ft)	Grade	Top (ftKB)	Btm (ftKB)	Len (ft)	Item Des		
16	15.50	42.09	J-55	18.5	108.5	90.00	Casing joints		
Surface Csg, 1,597.3ftKB									
OD (in)	ID (in)	Wt (lb/ft)	Grade	Top (ftKB)	Btm (ftKB)	Len (ft)	Item Des		
9 5/8	8.92	36.00	J-55	18.5	18.5	0.00	Landing joint		
9 5/8	8.92	36.00	J-55	18.5	22.1	3.60	Well head		
9 5/8	8.92	36.00	J-55	22.1	1,554.0	1,531.85	Casing Joints		
9 5/8	8.92	36.00	J-55	1,554.0	1,555.0	1.00	Float Collar		
9 5/8	8.92	36.00	J-55	1,555.0	1,595.8	40.85	Casing Joints		
9 5/8	8.92	36.00	J-55	1,595.8	1,597.3	1.50	Guide Shoe		
Intermediate Csg, 8,321.9ftKB									
OD (in)	ID (in)	Wt (lb/ft)	Grade	Top (ftKB)	Btm (ftKB)	Len (ft)	Item Des		
7	6.18	29.00	HCL-80	18.5	18.5	0.00	Landing Joint		
7	6.18	29.00	HCL-80	18.5	23.5	5.00	Header/ Pup		
7	6.18	29.00	P-110	23.5	6,256.1	6,232.56	Casing Joints		
7	6.18	29.00	P-110	6,256.1	6,258.1	2.00	DV Tool		
7	6.18	29.00	P-110	6,258.1	8,275.5	2,017.44	Casing Joints		
7	6.18	29.00	P-110	8,275.5	8,277.0	1.50	Float Collar		
7	6.18	29.00	P-110	8,277.0	8,320.4	43.40	Casing Joints		
7	6.18	29.00	P-110	8,320.4	8,321.9	1.50	Shoe		
Cement Stages									
Des		Pump Start Date	Drill Out Date	Top (ftKB)	Btm (ftKB)	Top Meas Meth			
Conductor Cement		11/29/2014		18.5	108.5	Returns to Surface			
Surface Casing Cement		12/6/2014		18.5	1,597.3	Returns to Surface			
Intermediate Casing Cement		12/14/2014		18.5	6,256.0	Returns to Surface			
Intermediate Casing Cement		12/14/2014		6,256.0	8,321.9	Returns to Surface			
Perforations									
Type of Hole		Date	Top (ftKB)	Btm (ftKB)	Linked Zone				
Perforated		1/5/2015	7,060.0	7,064.0	Entrada, Original Hole				
Perforated		12/31/2014	7,064.0	7,070.0	Permian, Original Hole				
Perforated		12/31/2014	7,070.0	7,080.0	Lykins, Original Hole				
Perforated		12/31/2014	7,455.0	7,465.0	Blaine, Original Hole				
Perforated		12/31/2014	7,465.0	7,490.0	Lyons, Original Hole				
Perforated		12/31/2014	7,500.0	7,520.0	Lyons, Original Hole				
Perforated		12/31/2014	7,535.0	7,610.0	Satanka, Original Hole				
Perforated		12/28/2014	7,860.0	7,915.0	Amazon, Original Hole				
Stimulation Intervals									
Stage Completion Type	Stage Start Time	Stage #	Top (ftKB)	Btm (ftKB)	Vol Clean Total (bbl)	Stg Prop Total (lb)			
Acidizing	1/8/2015	1	7,060.0	7,610.0	8.00	0			
Acidizing	1/19/2015	1	7,060.0	7,915.0	180.00	0			
Tubing Strings									
Tubing set at 7,000.0ftKB on 4/20/2015 06:00									
Set Depth (ftKB)		Comment			Run Date	Pull Date			
7,000.0					4/20/2015				
Item Des		OD (in)	ID (in)	Wt (lb/ft)	Grade	Jts	Len (ft)	Top (ftKB)	Btm (ftKB)
Tubing Hanger		7.063	3.500			1	0.59	18.5	19.1
Tubing		3.500	2.992	9.30	L-80	1	31.20	19.1	50.3
Tbg pup jt		3.500	2.992			1	9.97	50.3	60.3
Tubing		3.500	2.992	9.30	L-80	214	6,936.72	60.3	6,997.0
Nickel Plated Anchor Latch Seal Assembly		5.000	3.000			1	3.02	6,997.0	7,000.0
Rod Strings									
Special on <dtmrun>									
Rod Description				Run Date		Pull Date			
Special									
Item Des			OD (in)	Grade	Jts	Len (ft)	Top (ftKB)	Btm (ftKB)	
Other Strings									
Set Depth (ftKB)		Comment			Run Date	Pull Date			
Item Des			OD (in)	ID (in)	Len (ft)	Top (ftKB)	Btm (ftKB)		
Other In Hole									
Wellbore	Des		OD (in)	ID (in)	Run Date	Top (ftKB)	Btm (ftKB)		
Original Hole	Permanent Packer		5 13/16	4.000	4/20/2015	7,000.0	7,002.8		
Bottom Hole Cores									
Date		Core #		Top (ftKB)	Btm (ftKB)	Recov (ft)			