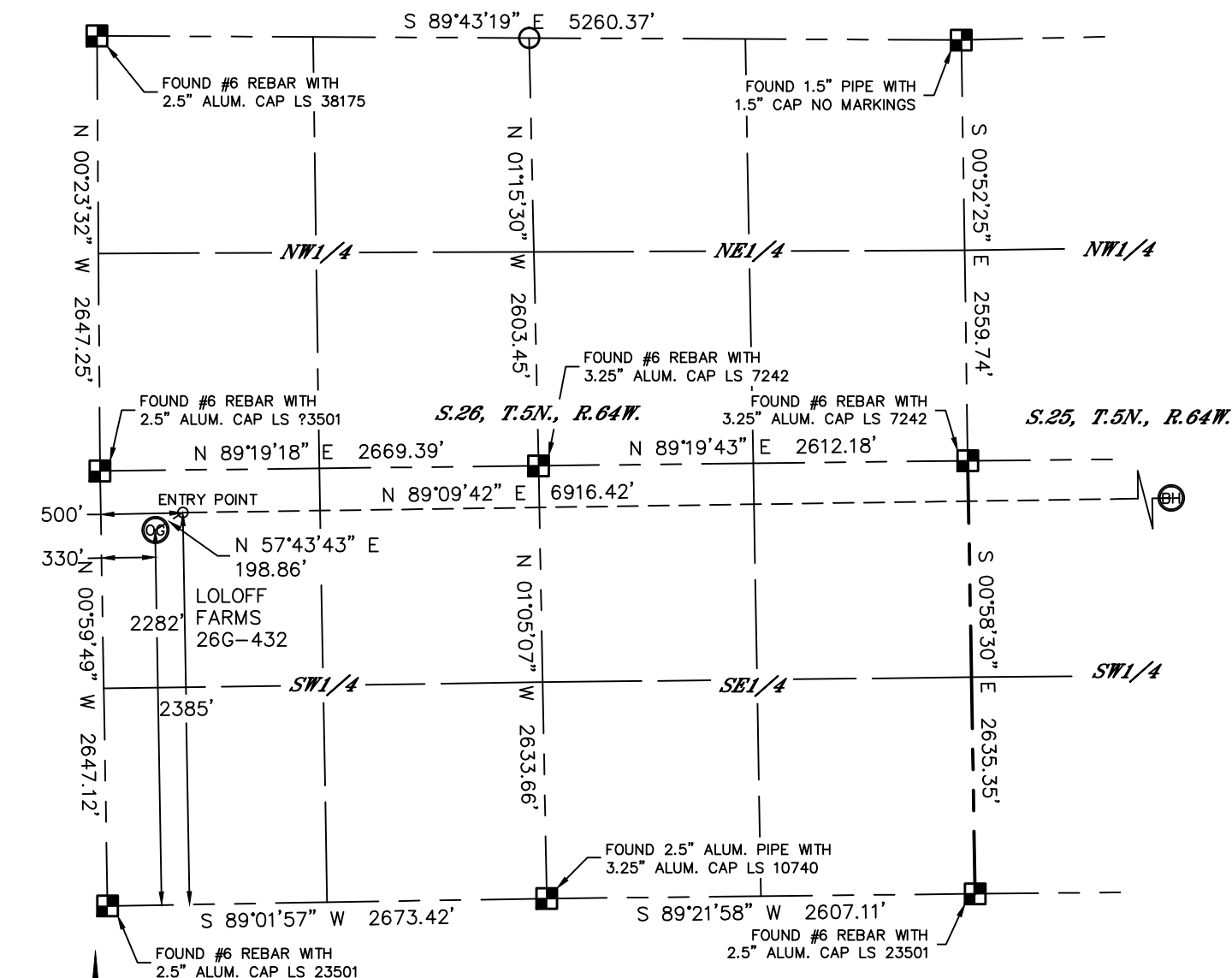


Lat40°, Inc. 1635 Foxtrail Drive, Suite 325 Loveland, CO 970-776-3321

WELL LOCATION CERTIFICATE

THIS MAP DOES NOT REPRESENT A BOUNDARY SURVEY

SECTION: 26
TOWNSHIP: 5N
RANGE: 64W



In accordance with a request from Al Bragg with PDC ENERGY

Lat401, Inc. has determined the surface location of the LOLOFF FARMS 26G-432 to be 2282' from the SOUTH line and 330' from the WEST line as measured at right angles from the section lines of Section 26, Township 5 North, Range 64 West and the bottom hole to be 2400' from the SOUTH line and 2135' from the WEST line as measured at right angles from the section lines of Section 25, Township 5 North, Range 64 West of the Sixth Principal Meridian, County of Weld, State of Colorado.

I hereby state that this Well Location Certificate was prepared by me, or under my direct supervision, that the fieldwork was completed on 6/24/2014, for and on behalf of PDC ENERGY. That this is not a Land Survey Plat or an Improvement Survey Plat, and that it is not to be relied upon for establishment of fence, building, or other future improvement lines.



SURFACE LOCATION

LAT: 40.36938°N
LONG: 104.52522°W
PDOP: 2.1
ELEV: 4614'
1/4,1/4: NW1/4SW1/4



BOTTOM HOLE

LAT: 40.36973°N
LONG: 104.49979°W

NOTE:

- 1) Bearings shown are Grid Bearings of the Colorado State Plane Coordinate System, North Zone, North American Datum 1983. The lineal dimensions as contained herein are based upon the "U.S. Survey Foot."
- 2) Ground elevations are based on an observed GPS elevation (NAVD 1988 DATUM).
- 3) IMPROVEMENTS: See LOCATION DRAWING for all visible improvements within 500' of disturbed area.
- 4) SURFACE USE: CROPLAND
- 5) INSTRUMENT OPERATOR: ADAM KELLY
- 6) NEAREST CULTURAL ITEMS:
- BUILDING: $\pm 246'$ SW
- BUILDING UNIT: $\pm 303'$ SW
- HIGH OCCUPANCY BUILDING UNIT: 5280'+
- DESIGNATED OUTSIDE ACTIVITY AREA: 5280'+
- PUBLIC ROAD: (CR 57) $\pm 322'$ W
- ABOVEGROUND UTILITY: $\pm 293'$ W
- RAILROAD: 5280'+
- PROPERTY LINE: $\pm 264'$ SE
- LEGEND
-  = ALIQUOT MONUMENT AS DE
-  = CALCULATED POSITION

LEGEND

-  = ALIQUOT MONUMENT AS DESCRIBED
 = CALCULATED POSITION

ENTRY POINT

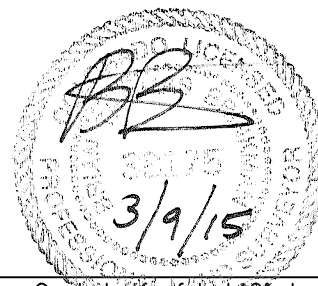
LAT: 40.36967°N
LONG: 104.52461°W

SHEET 1 OF 2

Brian T. Brinkman—On behalf of Lat40, Inc.

Colorado Licensed Professional
Land Surveyor No. 38175

DATE: 3/9/2015
PROJECT#: 2014021



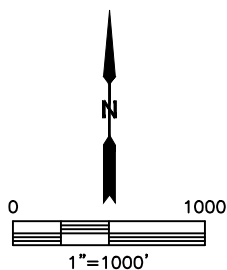
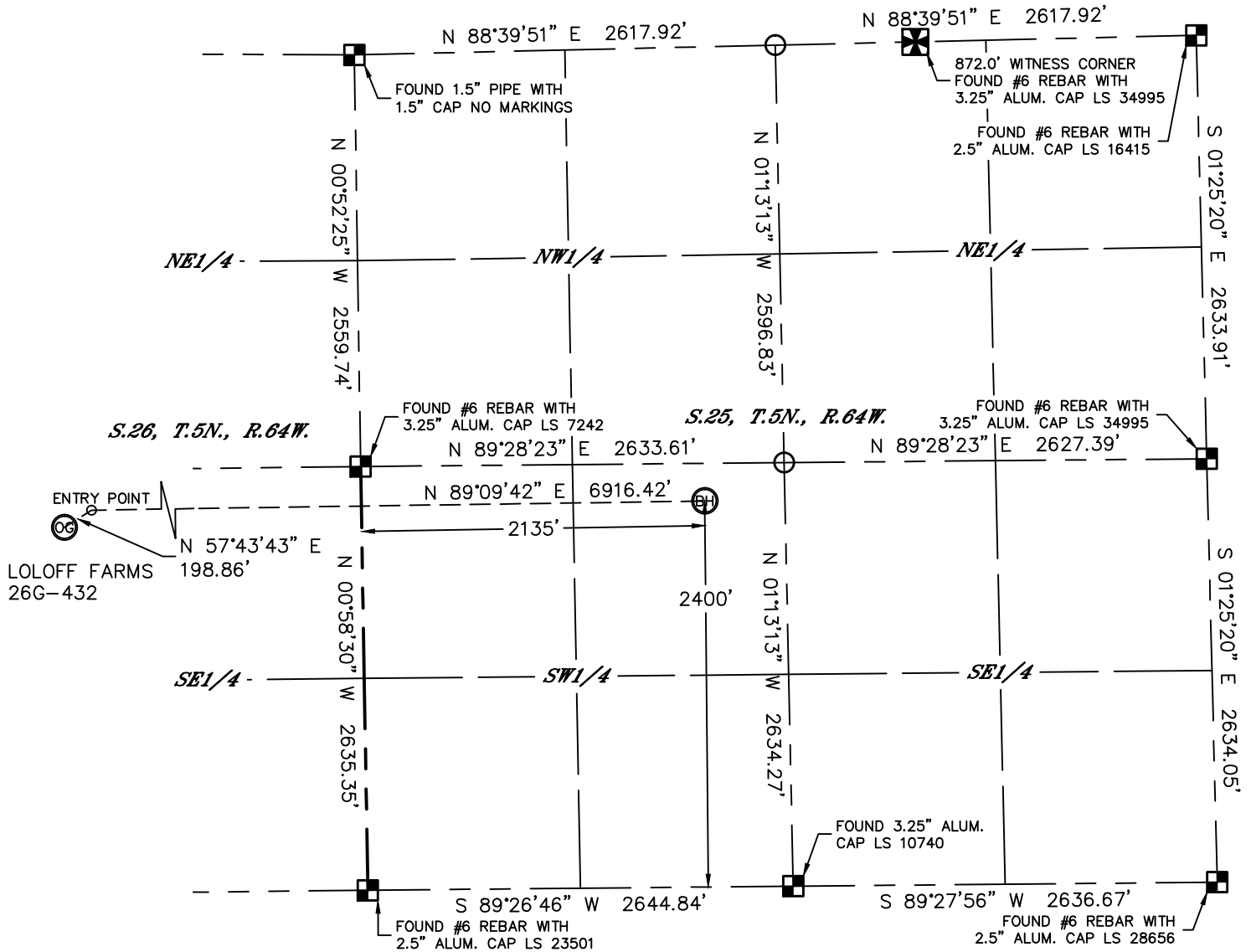


Lat40°, Inc. 1635 Foxtrail Drive, Suite 325 Loveland, CO 970-776-3321

WELL LOCATION CERTIFICATE

THIS MAP DOES NOT REPRESENT A BOUNDARY SURVEY

SECTION: 26
TOWNSHIP: 5N
RANGE: 64W



LEGEND

- = ALIQUOT MONUMENT AS DESCRIBED
- = CALCULATED POSITION

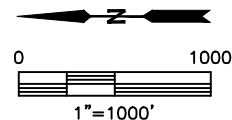
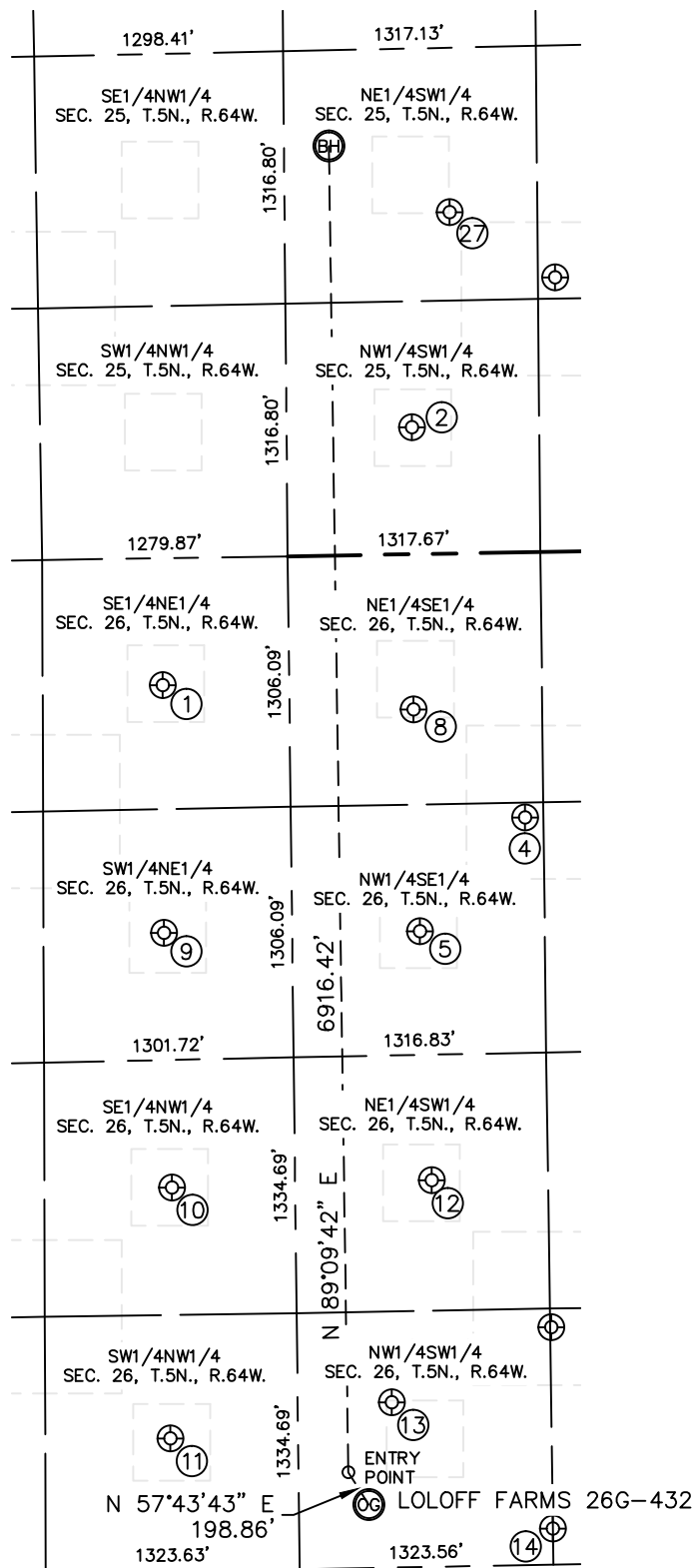
SHEET 2 OF 2

Brian T. Brinkman—On behalf of Lat40°, Inc.
Colorado Licensed Professional
Land Surveyor No. 38175
DATE: 3/9/2015
PROJECT#: 2014021

SITE SKETCH

LOLOFF FARMS 26G-432

SECTION: 26
TOWNSHIP: 5N
RANGE: 64W





Lat40°, Inc. 1635 Foxtrail Drive, Suite 325 Loveland, CO 970-776-3321

SITE SKETCH

LOLOFF FARMS 26G-432

SECTION: 26
TOWNSHIP: 5N
RANGE: 64W

| WELL NO. | WELL NAME | SHL FOOTAGE | | | | SHL LAT° | SHL LONG° | PDOP | ELEV (FT.) | 1/4/1/4 |
|----------|----------------------|-------------|-----|------|-----|----------|------------|------|------------|---------|
| 1 | MONFORT KUNER B 26-8 | 1910 | FNL | 662 | FEL | 40.37220 | -104.50984 | 2.2 | 4590 | SENE |
| 2 | LOUSTALET 13-25 | 1981 | FSL | 662 | FWL | 40.36859 | -104.50507 | 2.2 | 4589 | NWSW |
| 4 | SCHLAGEL 5-26 | 1414 | FSL | 1383 | FEL | 40.36704 | -104.51240 | 2.1 | 4592 | NWSE |
| 5 | SCHLAGEL 26-2 | 1969 | FSL | 1966 | FEL | 40.36856 | -104.51450 | 2.0 | 4592 | NWSE |
| 8 | SCHLAGEL 26-3 | 1988 | FSL | 810 | FEL | 40.36861 | -104.51035 | 2.3 | 4592 | NESE |
| 9 | MONFORT KUNER B 26-7 | 1923 | FNL | 1954 | FEL | 40.37222 | -104.51448 | 2.4 | 4593 | SWNE |
| 10 | BIHAIN 26-2 | 1971 | FNL | 1994 | FWL | 40.37215 | -104.51925 | 2.4 | 4597 | SENW |
| 11 | BIHAIN 26-3 | 1970 | FNL | 685 | FWL | 40.37221 | -104.52394 | 1.8 | 4599 | SWNW |
| 12 | LOLOFF 1 | 1925 | FSL | 2016 | FWL | 40.36843 | -104.51916 | 1.8 | 4612 | NESW |
| 13 | LOLOFF 26-12 | 2153 | FSL | 860 | FWL | 40.36904 | -104.52331 | 1.5 | 4618 | NWSW |
| 14 | LOLOFF B 26-33 | 1324 | FSL | 187 | FWL | 40.36675 | -104.52571 | 1.5 | 4636 | NWSW |
| 27 | LOUSTALET 23-25 | 1774 | FSL | 1780 | FWL | 40.36802 | -104.50105 | 1.9 | 4586 | NESW |

SHEET 2 OF 2

DATE: 3/9/2015
PROJECT#: 2014021