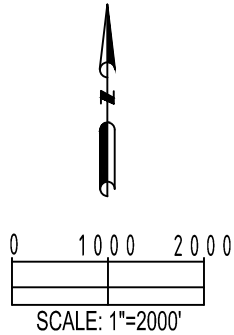
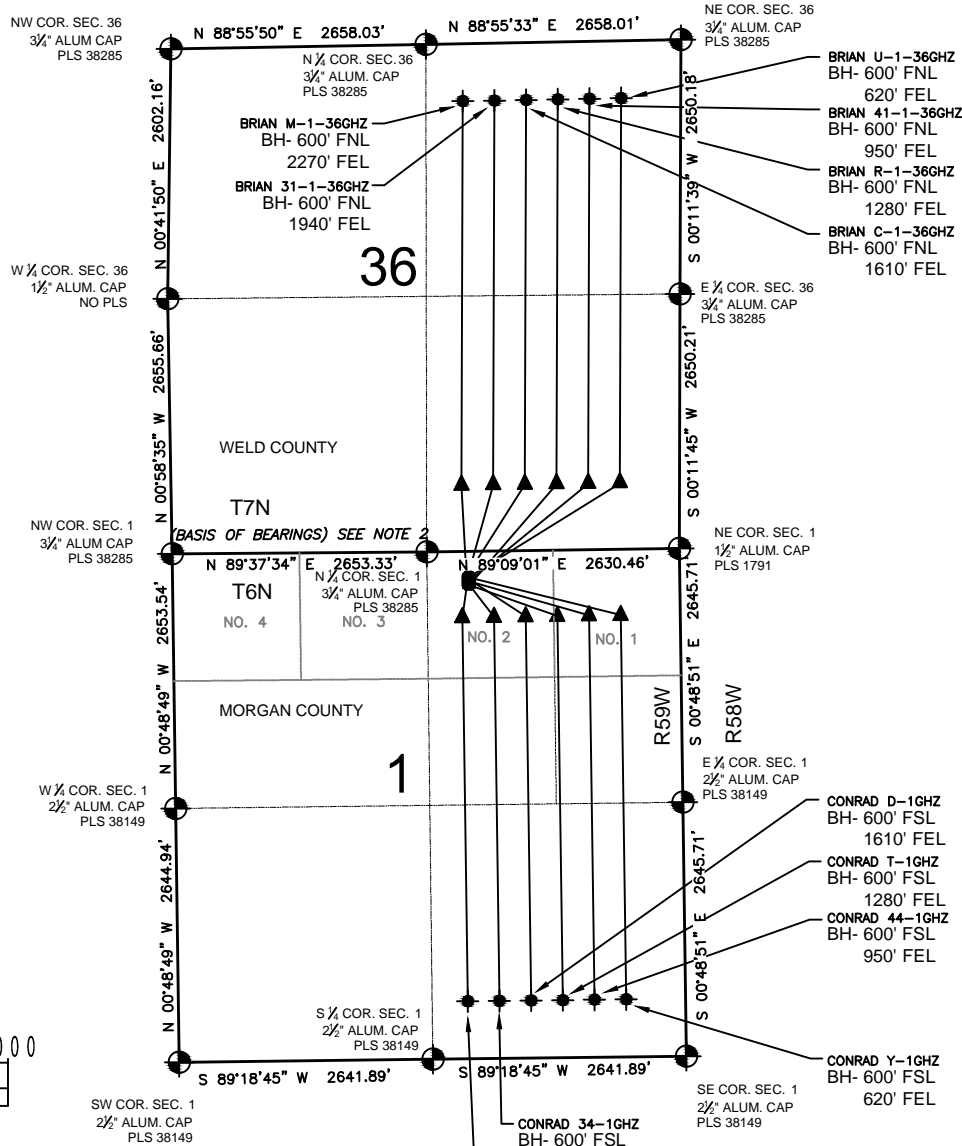


# BRIAN CONRAD 1-C MULTI-WELL PLAN



## LEGEND

- ⊙ = EXISTING MONUMENT
- = CALCULATED POSITION
- = PROPOSED WELL
- ▲ = LANDING POINT
- ◆ = BOTTOM HOLE
- ◆ = EXISTING WELL
- LP = LANDING POINT
- BH = BOTTOM HOLE

## NOTES:

- THIS FIELD SURVEY CONFORMS TO THE MINIMUM STANDARDS SET BY THE C.O.G.C.C., RULE NO. 215
- BEARINGS ARE BASED UPON THE NORTH LINE OF THE NORTHWEST QUARTER OF SECTION 1, TOWNSHIP 6 NORTH, RANGE 59 WEST OF THE 6TH P.M., COUNTY OF MORGAN, STATE OF COLORADO AS BEARING N89°37'34"E BETWEEN THE MONUMENTS SHOWN HEREON.
- GRID DISTANCES ARE SHOWN, AS GPS MEASURED IN THE FIELD, WITH TIES TO WELLS MEASURED PERPENDICULAR TO SECTION LINES. TO GET GROUND DISTANCES MULTIPLY THE SHOWN DISTANCE BY 1.000260139.

## NOTES:

- BRIAN C-1-36GHZ TO BE AT 256' FNL, 2216' FEL.
- BRIAN U-1-36GHZ TO BE AT 257' FNL, 2176' FEL.
- BOTTOM HOLE AT 600' FNL & 1610' FEL, 7N59W36.
- BOTTOM HOLE AT 600' FNL & 620' FEL, 7N59W36.
- CONRAD D-1GHZ TO BE AT 276' FNL, 2216' FEL.
- CONRAD Y-1GHZ TO BE AT 277' FNL, 2176' FEL.
- BOTTOM HOLE AT 600' FSL & 1610' FEL.
- BOTTOM HOLE AT 600' FSL & 620' FEL.
- BRIAN 31-1-36GHZ TO BE AT 296' FNL, 2217' FEL.
- BRIAN 41-1-36GHZ TO BE AT 297' FNL, 2177' FEL.
- BOTTOM HOLE AT 600' FNL & 1940' FEL, 7N59W36.
- BOTTOM HOLE AT 600' FNL & 950' FEL, 7N59W36.
- CONRAD 34-1GHZ TO BE AT 316' FNL, 2217' FEL.
- CONRAD 44-1GHZ TO BE AT 317' FNL, 2177' FEL.
- BOTTOM HOLE AT 600' FSL & 1940' FEL.
- BOTTOM HOLE AT 600' FSL & 950' FEL.
- BRIAN M-1-36GHZ TO BE AT 336' FNL, 2217' FEL.
- BRIAN R-1-36GHZ TO BE AT 337' FNL, 2177' FEL.
- BOTTOM HOLE AT 600' FNL & 2270' FEL, 7N59W36.
- BOTTOM HOLE AT 600' FNL & 1280' FEL, 7N59W36.
- CONRAD Q-1GHZ TO BE AT 356' FNL, 2217' FEL.
- CONRAD T-1GHZ TO BE AT 357' FNL, 2177' FEL.
- BOTTOM HOLE AT 600' FSL & 2270' FEL.
- BOTTOM HOLE AT 600' FSL & 1280' FEL.

PREPARED BY:



FIELD DATE:

04-08-15

DRAWING DATE:

04-09-15

BY:

SMF

CHECKED BY:

WDW

SITE NAME:

BRIAN CONRAD 1-C

SURFACE LOCATION:

LOT 2 NE 1/4, SEC. 1, T6N, R59W, 6TH P.M.  
MORGAN COUNTY, COLORADO

PREPARED FOR:

