



DDC
3222 N. 6th Mile Rd
Casper, WY 82604

RM-150045

1":100' - MD
1/20/2015 5:54:03 PM

Oper. Company: Noble Energy, Inc
Country: United States
State / Province: Colorado
County / Parish: Weld
Started: 01/16/2015 04:00 AM

API/UWI: 05-123-39836
Field: Wildcat
Well: Gonsoulin State LD11-76HN
Rig: H&P #326
Ended: 01/20/2015 06:00 PM

Personnel

Day Hand: Chris Abbott
Night Hand: Boyd Wolff
Comp. Emp: DDC

Location

Latitude: 40° 46' 28.416 N
Longitude: 103° 50' 6.756 W
Elev. GL: 4739
Elev. DF: 30
Elev. KB: 4769

Hole Data

Size	From	To
13 3/4	0	1226
8 3/4	1226	5935
6 1/8	5935	10851

Casing Data

Size	From	To
9 5/8	0	1218
7	0	5925

Bit Sizes

Size	From	To
13 3/4	0	1226
8 3/4	1226	5935
6 1/8	5935	10851

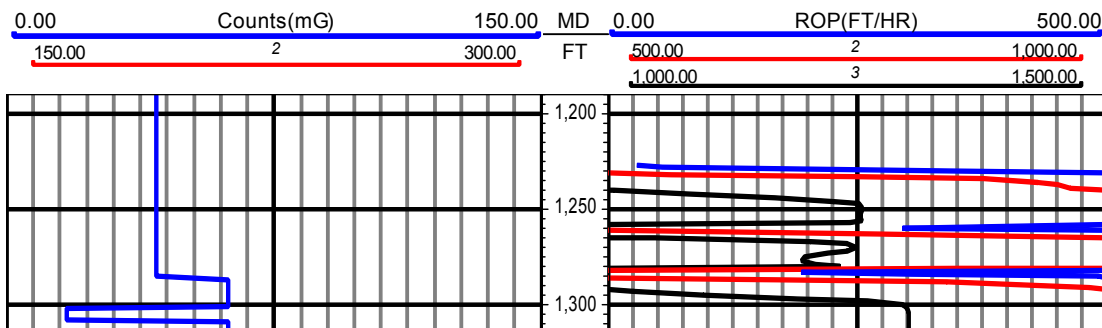
Mud Data

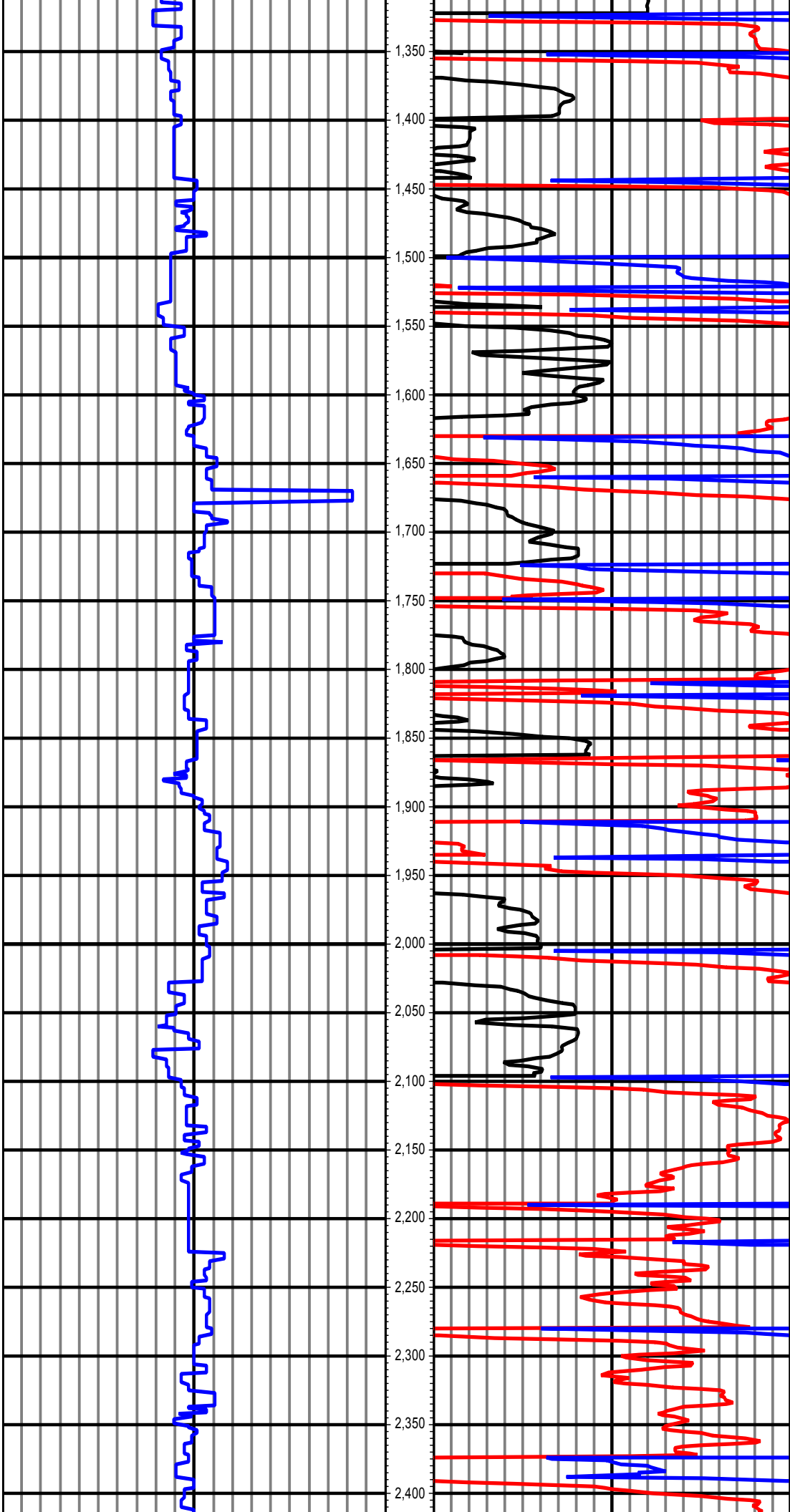
Type	Weight	Density	Viscosity	Rm	Rmf	Rmc	From	To
LSND	10.2		38				1226	10851

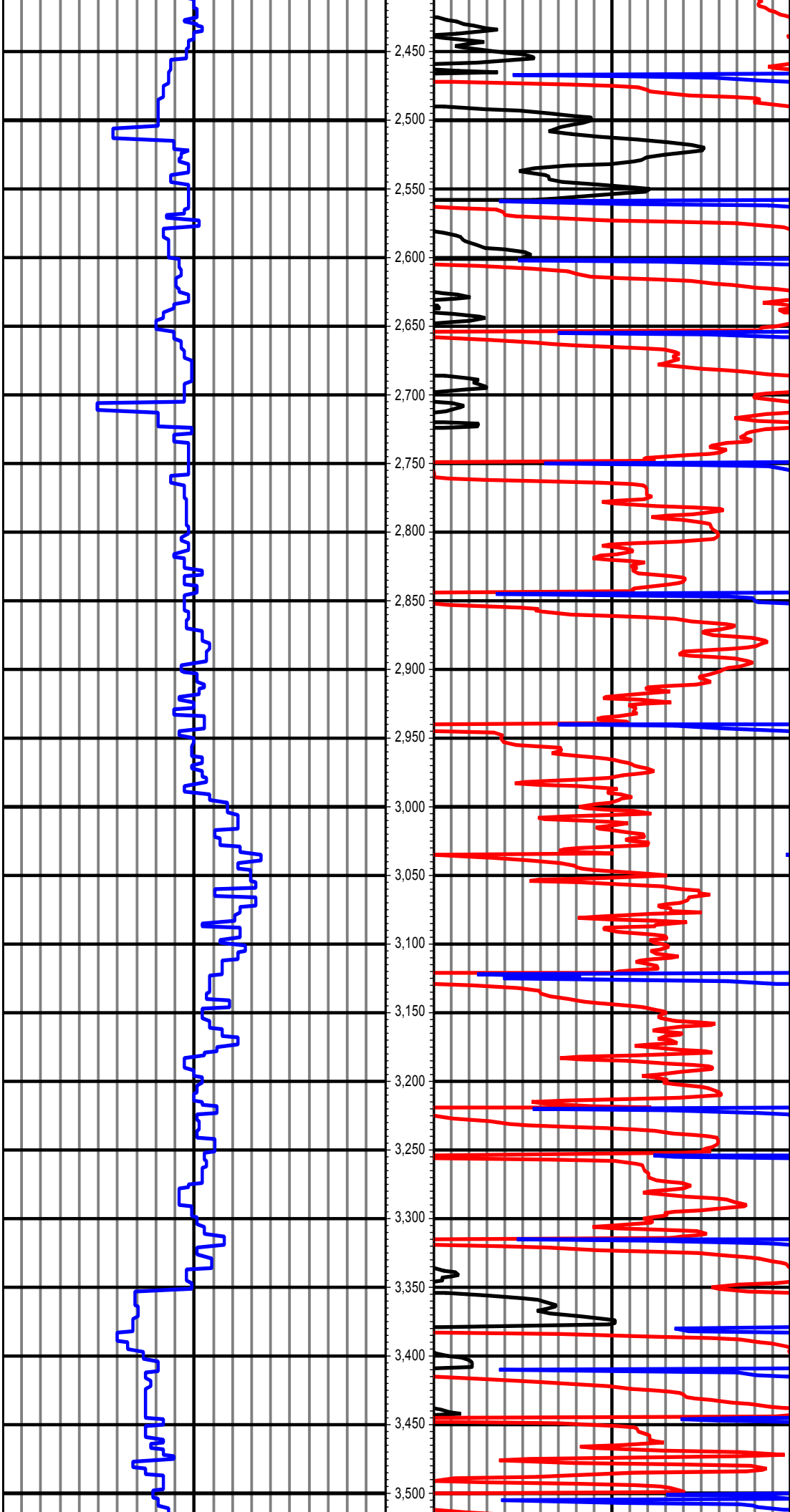
Tool Run Data

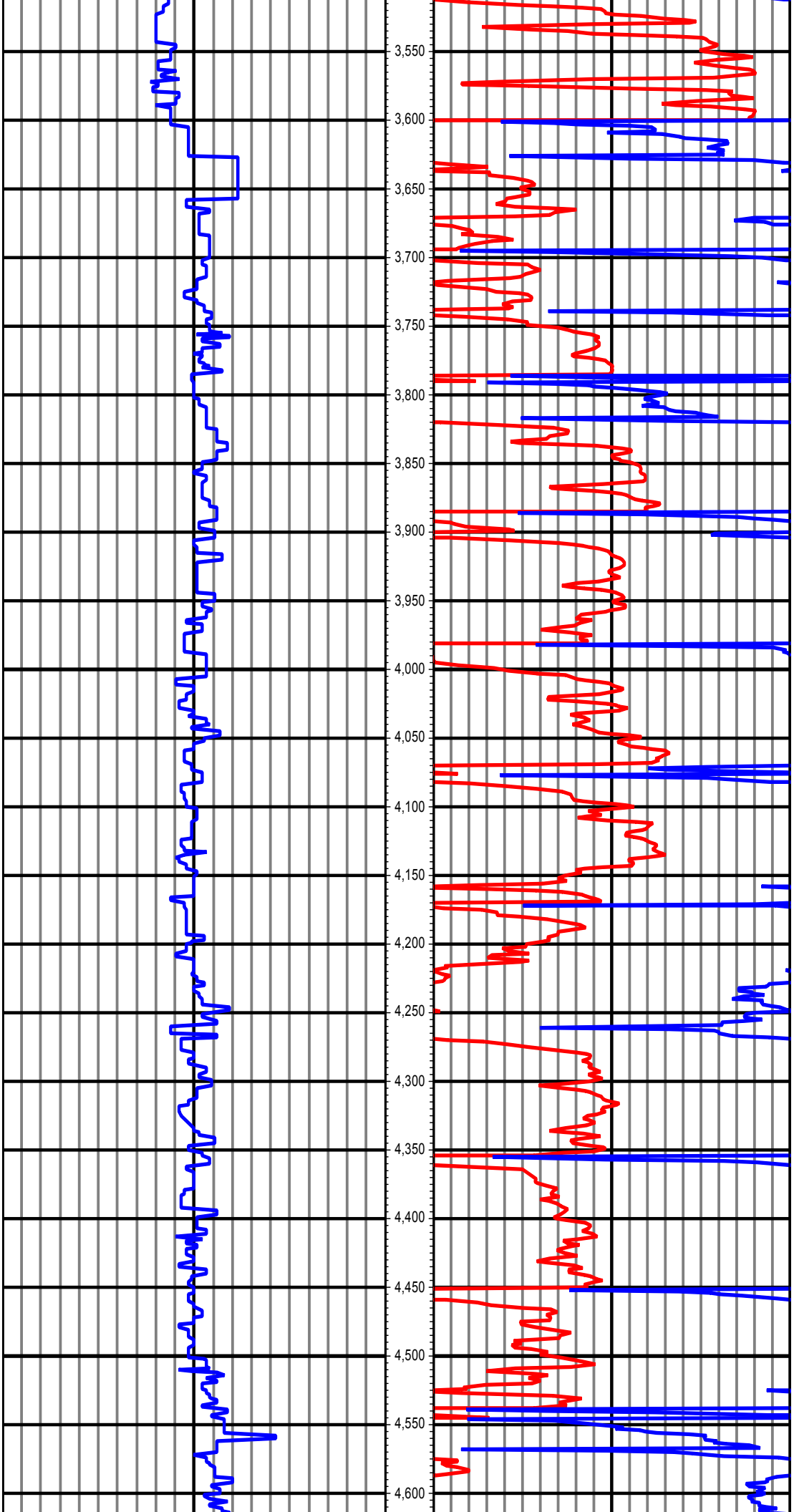
Serial Number	Gamma Offset	Resist. Offset	Start Time	Start Depth	End Time	End Depth
515	37	0	1/16/2015 4:00:21 AM	1226	1/17/2015 3:30:21 AM	5490
205	36	0	1/17/2015 2:00:30 PM	5490	1/17/2015 8:30:30 PM	5935
205	35	0	1/18/2015 11:30:42 PM	5935	1/20/2015 6:00:42 PM	10851

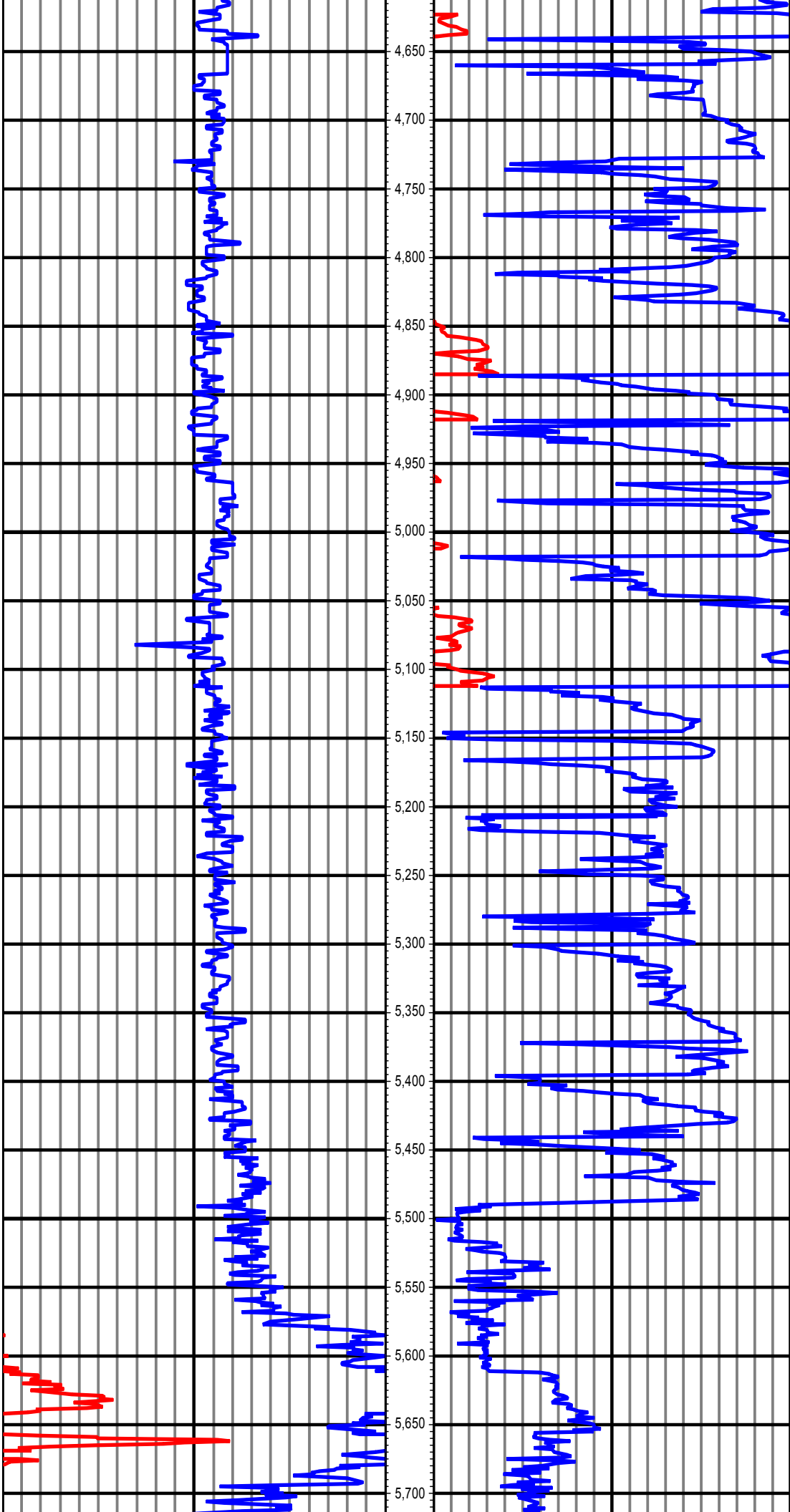
All interpretations are opinions based on inferences from electrical or other measurements and we cannot and do not guarantee the accuracy or correctness of any interpretation, and we shall not except in the case of gross or willful negligence on our part, be liable or responsible for any loss, cost damages or expenses incurred or sustained by anyone resulting from an interpretation made by any of our officers, agents, or employees.

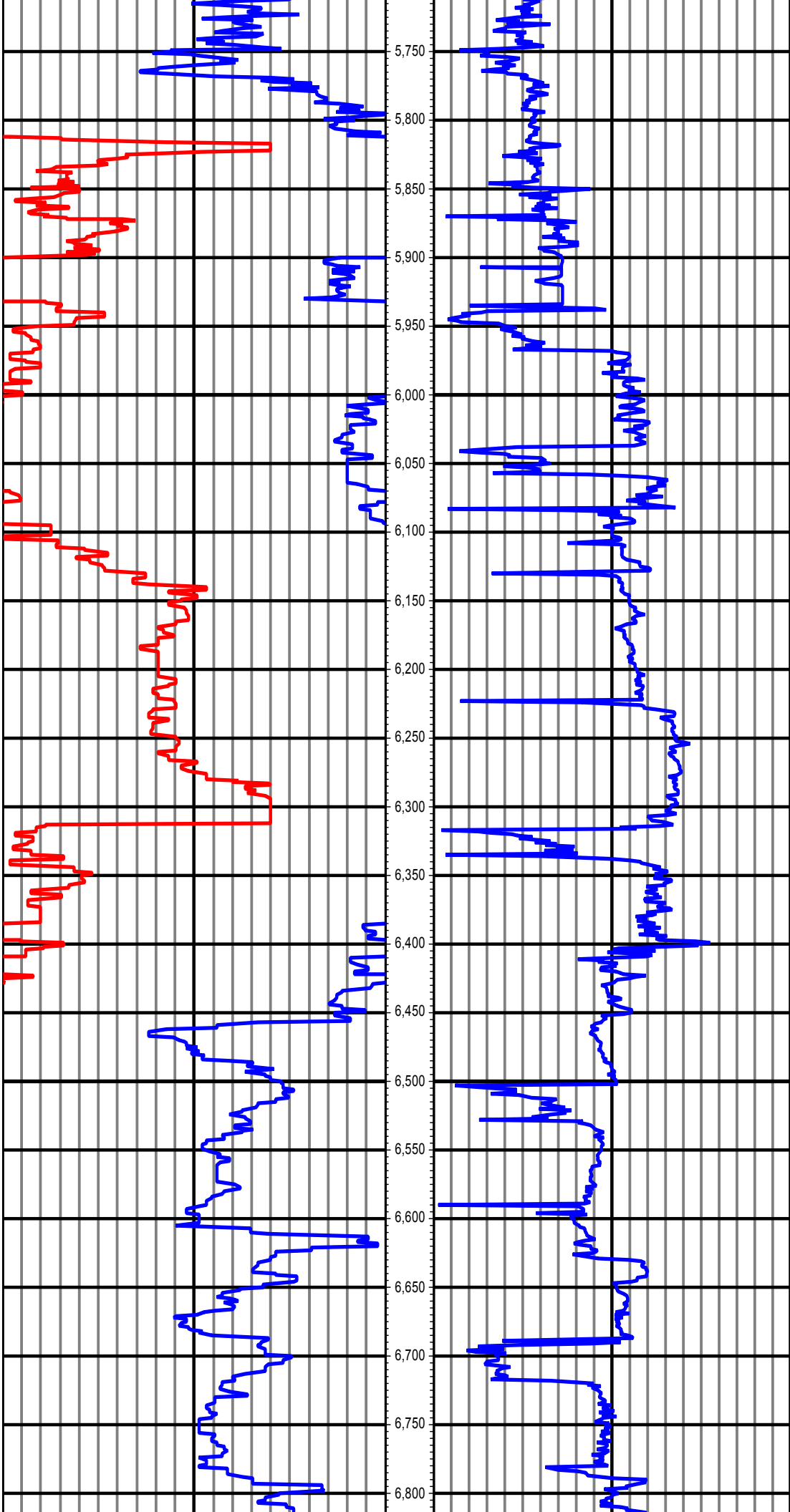


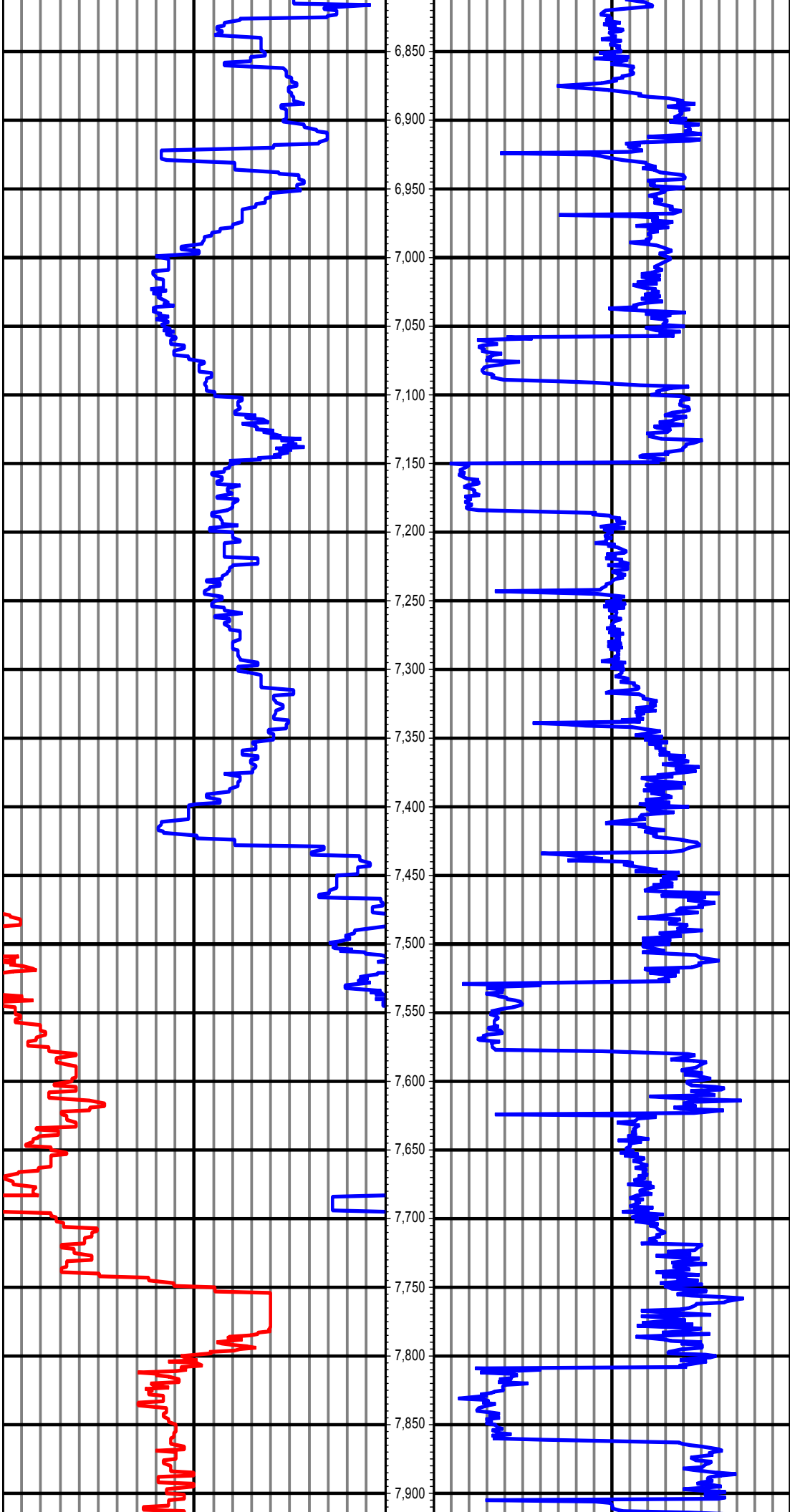


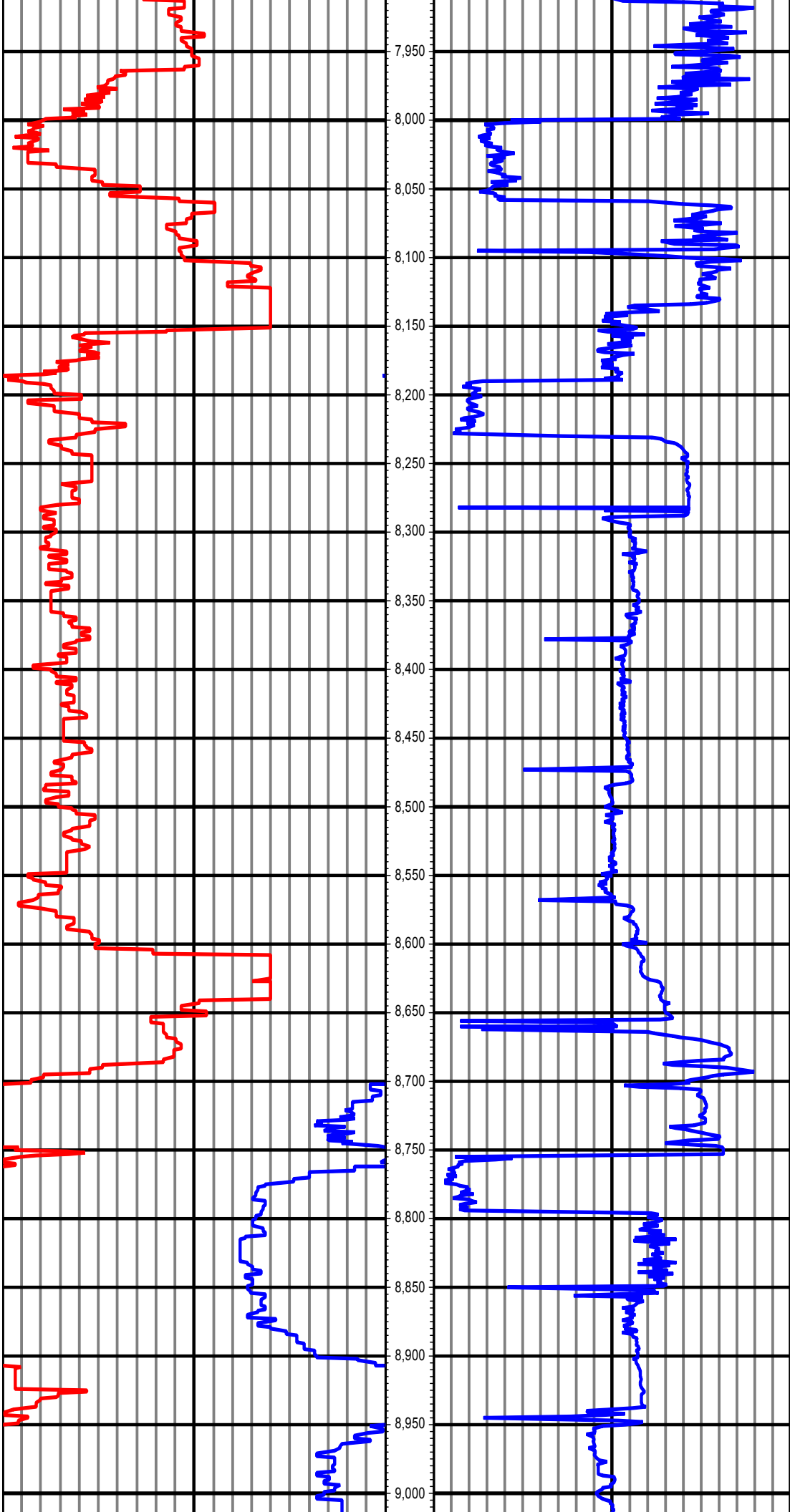


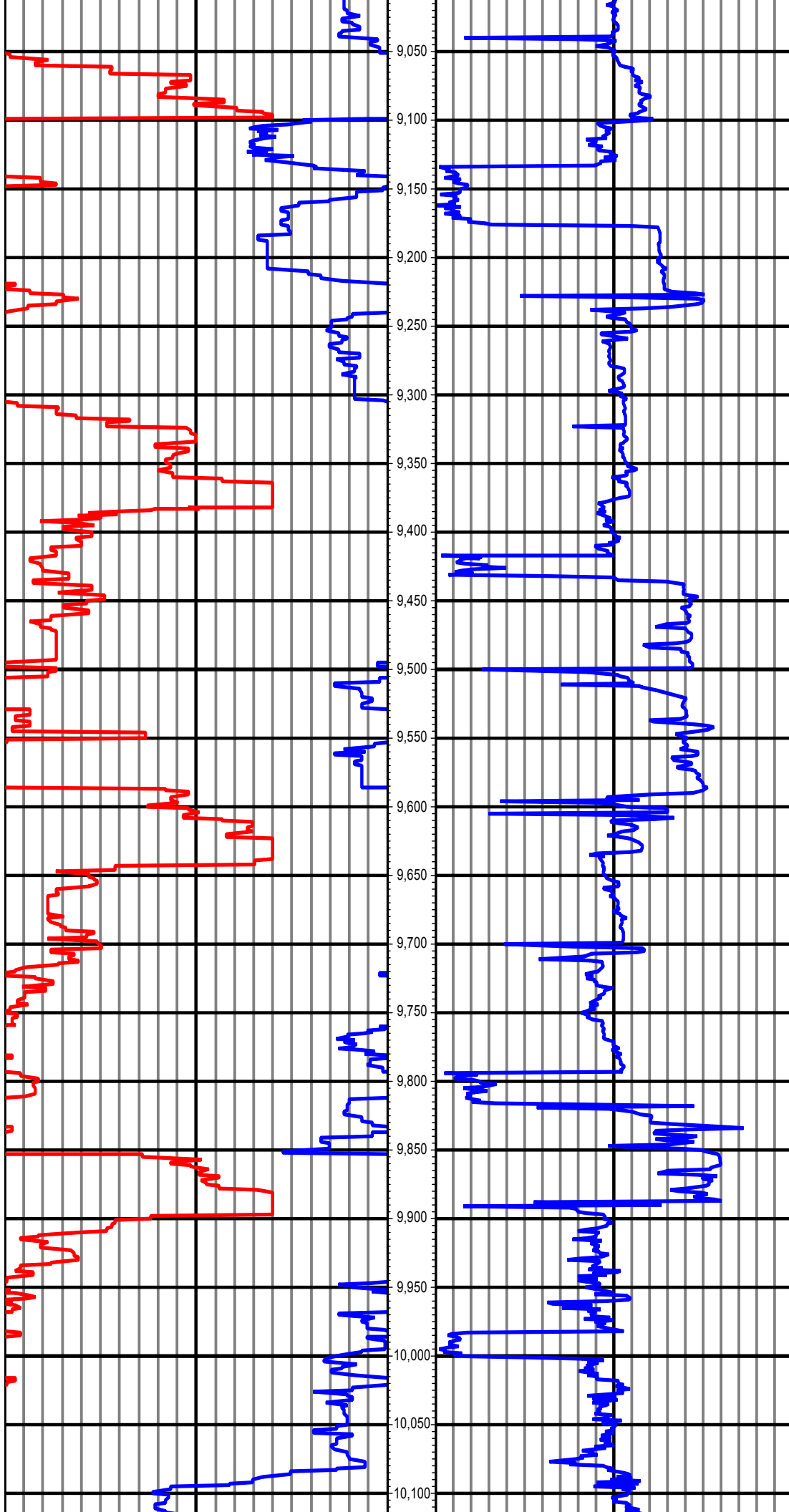


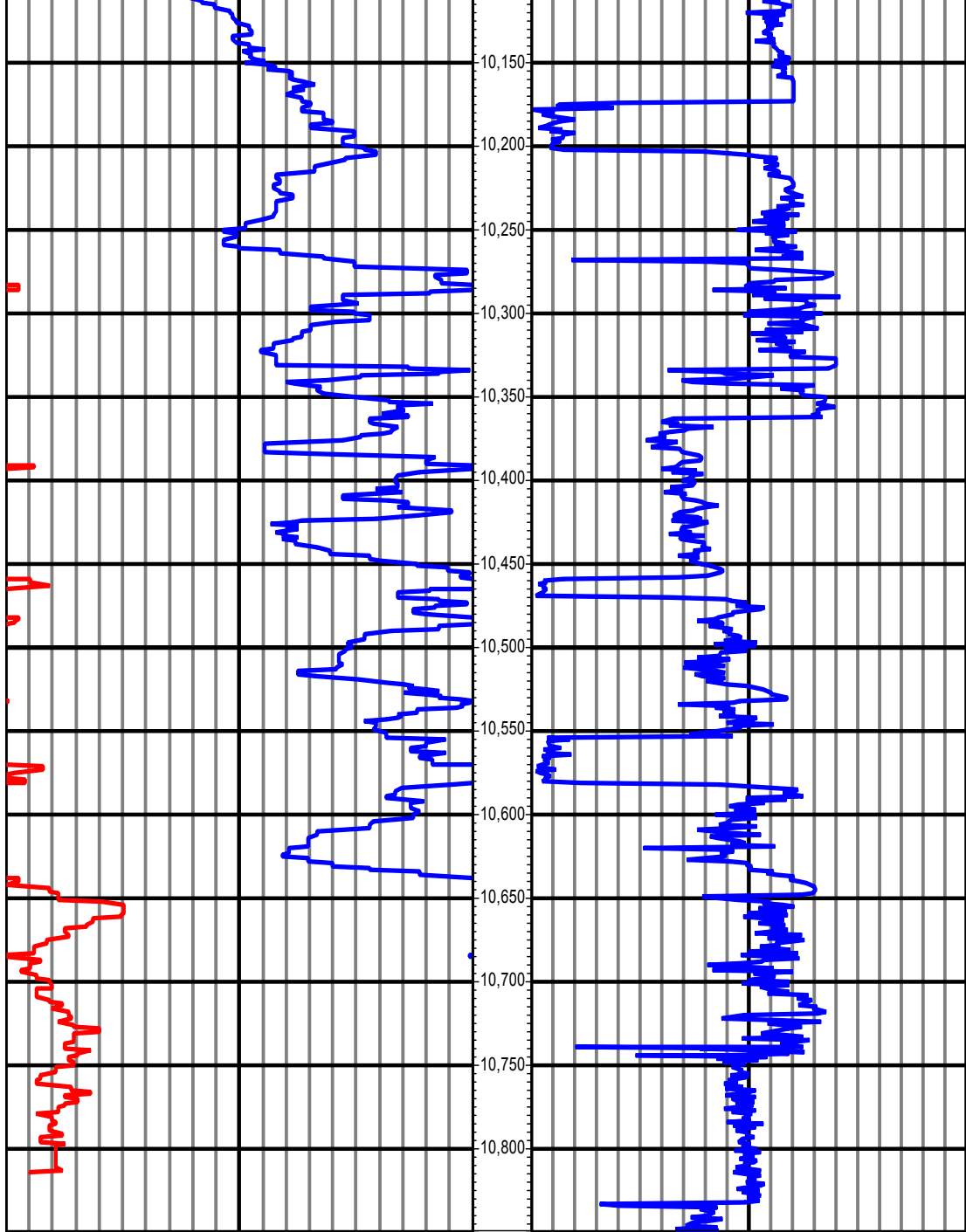












0.00 150.00 300.00 Counts(mG) 2
MD 0.00 500.00 1,000.00 1,500.00 ROP(FT/HR) 2 3



DDC

3222 N. 6th Mile Rd
Casper, WY 82604**RM-150045**

5":100' - MD

1/20/2015 5:55:02 PM

Oper. Company: Noble Energy, Inc**Country:** United States**State / Province:** Colorado**County / Parish:** Weld**Started:** 01/16/2015 04:00 AM**API/UWI:** 05-123-39836**Field:** Wildcat**Well:** Gonsoulin State LD11-76HN**Rig:** H&P #326**Ended:** 01/20/2015 06:00 PM**Personnel****Day Hand:** Chris Abbott**Night Hand:** Boyd Wolff**Comp. Emp:** DDC**Location****Latitude:** 40° 46' 28.416 N**Longitude:** 103° 50' 6.756 W**Elev. GL:** 4739**Elev. DF:** 30**Elev. KB:** 4769**Hole Data**

Size	From	To
13 3/4	0	1226
8 3/4	1226	5935
6 1/8	5935	10851

Casing Data

Size	From	To
9 5/8	0	1218
7	0	5925

Bit Sizes

Size	From	To
13 3/4	0	1226
8 3/4	1226	5935
6 1/8	5935	10851

Mud Data

Type	Weight	Density	Viscosity	Rm	Rmf	Rmc	From	To
LSND	10.2		38				1226	10851

Tool Run Data

Serial Number	Gamma Offset	Resist. Offset	Start Time	Start Depth	End Time	End Depth
515	37	0	1/16/2015 4:00:21 AM	1226	1/17/2015 3:30:21 AM	5490
205	36	0	1/17/2015 2:00:30 PM	5490	1/17/2015 8:30:30 PM	5935
205	35	0	1/18/2015 11:30:42 PM	5935	1/20/2015 6:00:42 PM	10851

All interpretations are opinions based on inferences from electrical or other measurements and we cannot and do not guarantee the accuracy or correctness of any interpretation, and we shall not except in the case of gross or willful negligence on our part, be liable or responsible for any loss, cost damages or expenses incurred or sustained by anyone resulting from an interpretation made by any of our officers, agents, or employees.

