

Décollement Consulting Inc.



Scale: 5" / 100'
Measured Depth Log

Well Name Barclay 27C-11HZ

Location SW/SE Section 14, T2N - R67W

State Colorado

Country USA

County Weld

API Number 05-123-33895-30000

Rig Number Precision Drilling #595
Field Wattenberg

Region DJ Basin

Drilling Completed 2/19/2015

Spud Date 2/10/2015

Surface Coordinates 577' FSL, 1679' FEL

LAT/LONG: 40.13241550/104.85407110

Bottom Hole Coordinates LAT/LONG: 40 09 30.318 N/104 51 11.206 W

Ground Elevation 4,925'

K.B. Elevation 4,950'

Logged Interval 7,000' To 17,314'

Total Depth 17,314'

Formation Codell Sandstone

Type of Drilling Fluid LSND

Operator

Company Anadarko Petroleum Corporation

Address 1099 18TH Street Suite 1800
Denver, Colorado 80202-1918

Geologist

Name Dick Brunner & Chris Irwin

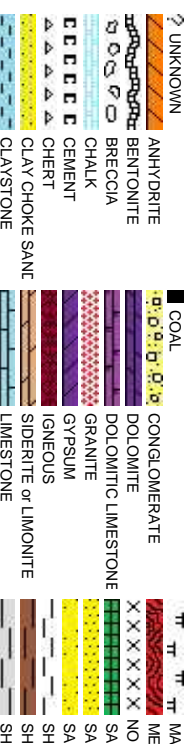
Company Decollement Consulting, Inc.

Address 13300 Braun Road
Golden, Colorado 80401

Zone Color Coding



Rock Types



Accessories

Fossils

	GASTROPOD		ARGILLITE GRAIN		HEAVY MINERAL
	INOCERAMUS		B BENTONITE		K KAOLIN
	ALGAE		BIT BITUMENOUS SUBSTANCE		M MARCASITE
	AMPHIPORA		BRECCIA FRAGMENTS		TT MARLSTONE
	BELEMNITE		CALCAREOUS		U MICACEOUS
	BIOCLASTIC		CARBONACEOUS FLAKES		M MINERAL CRYSTALS
	BRACHIOPOD		CHERT		N NODULES
	BRYOZOA		COAL - THIN BEDS		P PHOSPHATE PELLETS
	CEPHALOPOD		DOLOMITIC		P PYRITE
	CORAL		FELDSPAR		S SALT CAST
	CRINOID		FERRUGINOUS PELLET		S SANDY
	ECHINOID		FERRUGINOUS		S SIDERITE
	FISH		GLAUCONITE		S SILICEOUS
	FORAMINIFERA		GYPSEFEROUS		S SILTY
	F FOSSIL				T TUFFACEOUS

Stringer

	ANHYDRITE STRINGER
	B BENTONITE STRINGER
	C COAL STRINGER
	D DOLOMITE STRINGER
	G GYPSUM STRINGER
	L Limestone STRINGER
	TT MARLSTONE (CALC) STRG
	U MARLSTONE (DOL) STRG
	S SANDSTONE STRINGER
	SH SHALE STRINGER
	SL SILTSTONE STRINGER

Other Symbols

Oil Show

	P PINPOINT
	V VUGGY
	D DEAD
	E EVEN
	Q QUESTIONABLE
	BIT
	S SPOTTED STAINING
	CONNECTION (UP)

Engineering

	DST INTERVAL
	FAULT
	FORMATION TOP
	GAS SHOW
	OIL SHOW
	MN DEPTH UP

	WIRELINE TESTED - LEFT		E EARTHY
	WIRELINE TESTED - RT		FX FINELYXLN
	DRILL STEM TEST		GS GRAINSTONE
	MN DEPTH		L LITHOGRAPHIC
			MX MICROXLN
			MS MUDSTONE

Rounding

	MN DEPTH (DOWN)
--	-----------------

	A ANGULAR		PS PACKSTONE
--	-----------	--	--------------

Porosity

	CONNECTION (DOWN)
	CONNECTION GAS
	CONNECTION GAS (LEFT)
	TRIP GAS
	TRIP GAS (LEFT)

	NORMAL FAULT		R ROUNDED
	OVERTURNED STRATA		B SUBANG
	REVERSE FAULT		P SUBRAND

Sorting

	F FRACTURE
--	------------

	CASING
--	--------

	M MODERATE
--	------------

	INTERCRYSTALLINE
--	------------------

	DOWN TIME GAS
--	---------------

	SIDEWALL CORE (LEFT)
--	----------------------

	P POOR
--	--------

	INTEROOLITIC
--	--------------

	DOWN TIME GAS (LEFT)
--	----------------------

	SIDEWALL CORE (RIGHT)
--	-----------------------

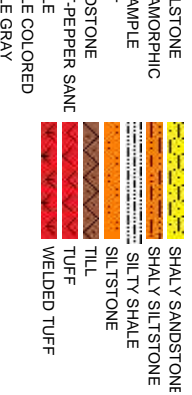
	W WELL
--	--------

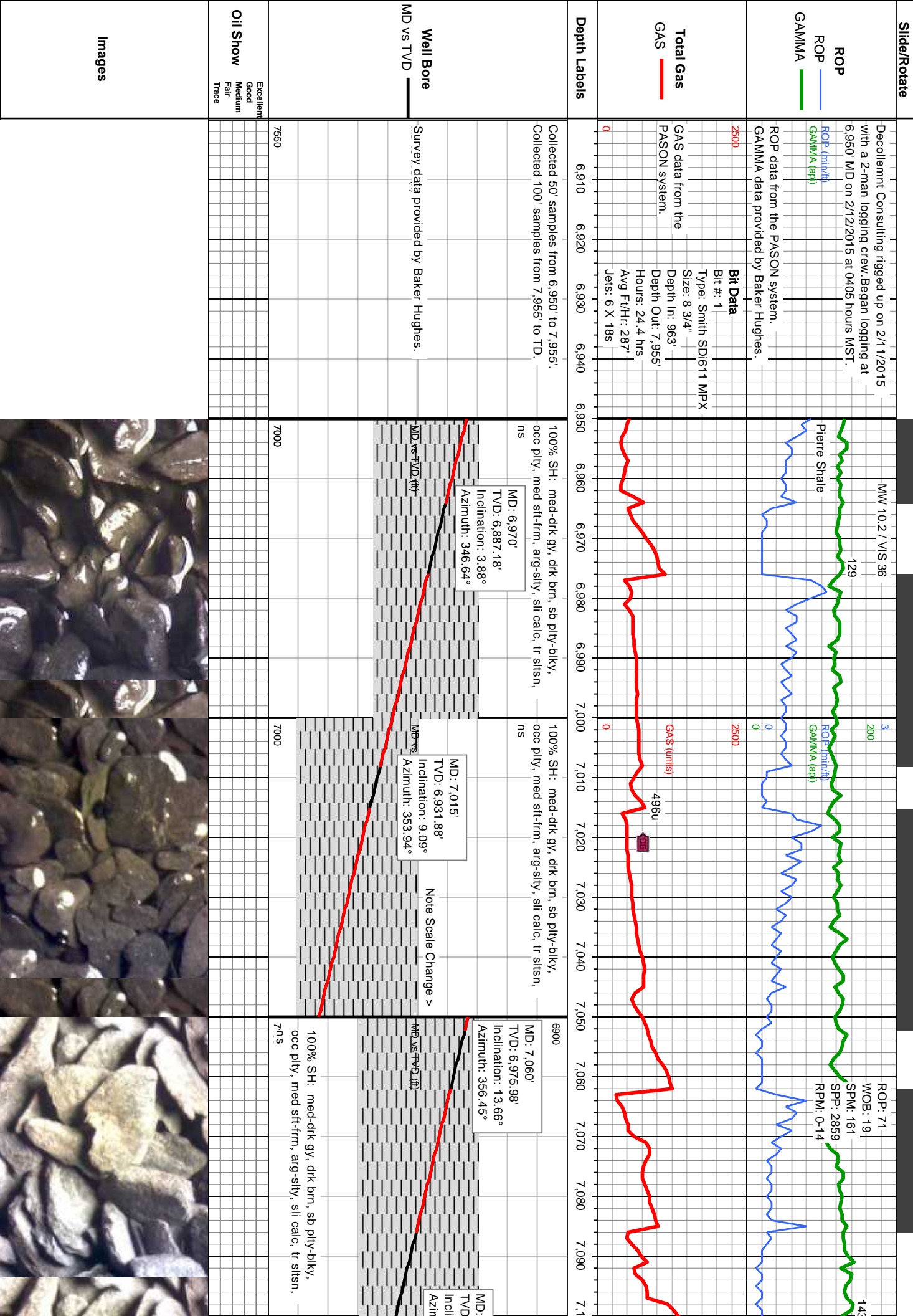
	MOLDIC
--	--------

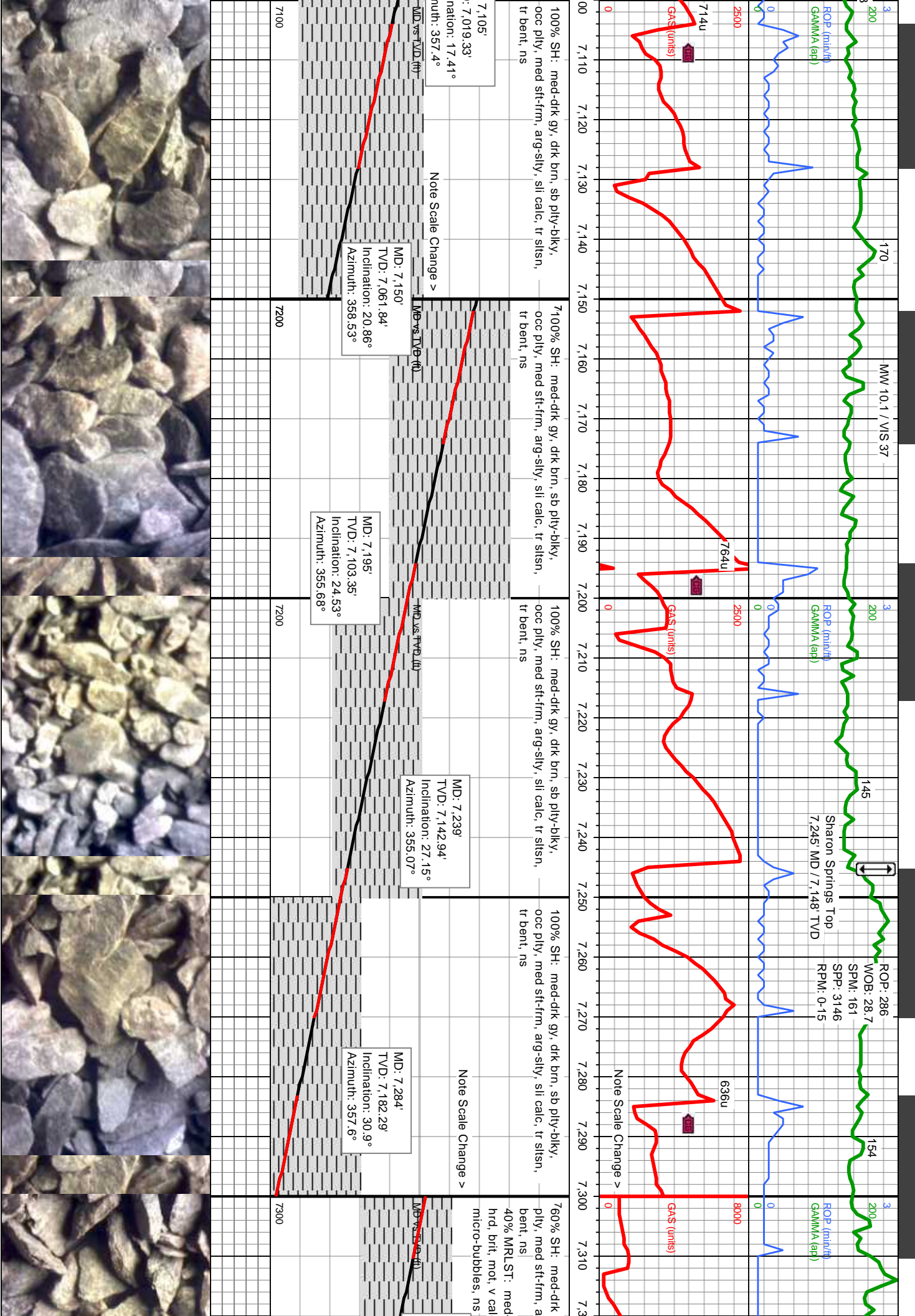
	CORE - LOST
--	-------------

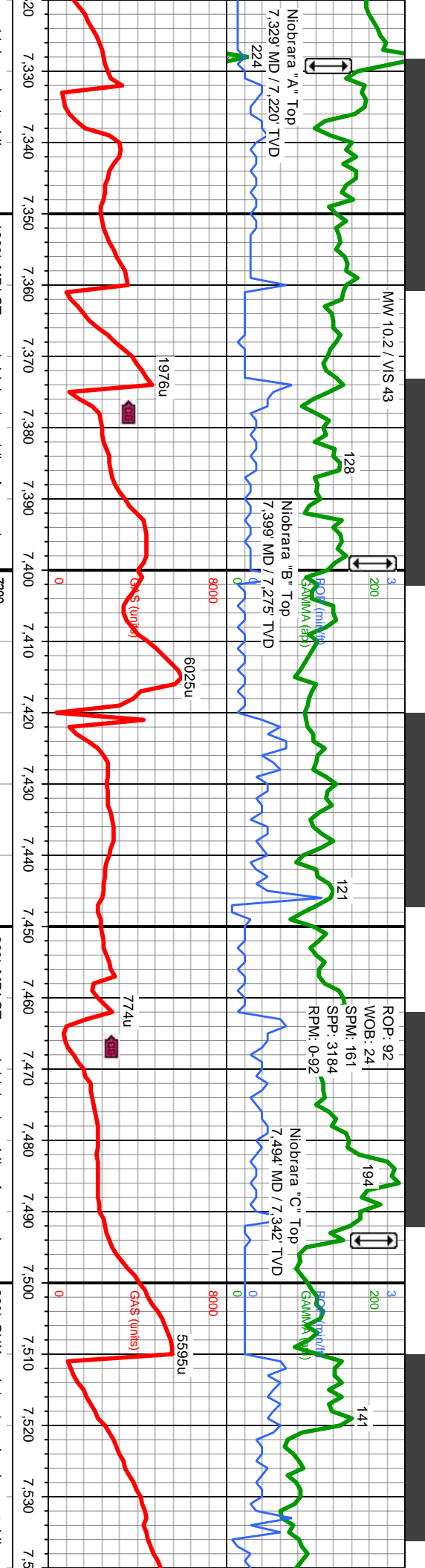
	CORE - RECOVERED
--	------------------

	CRYPTOXLN
--	-----------



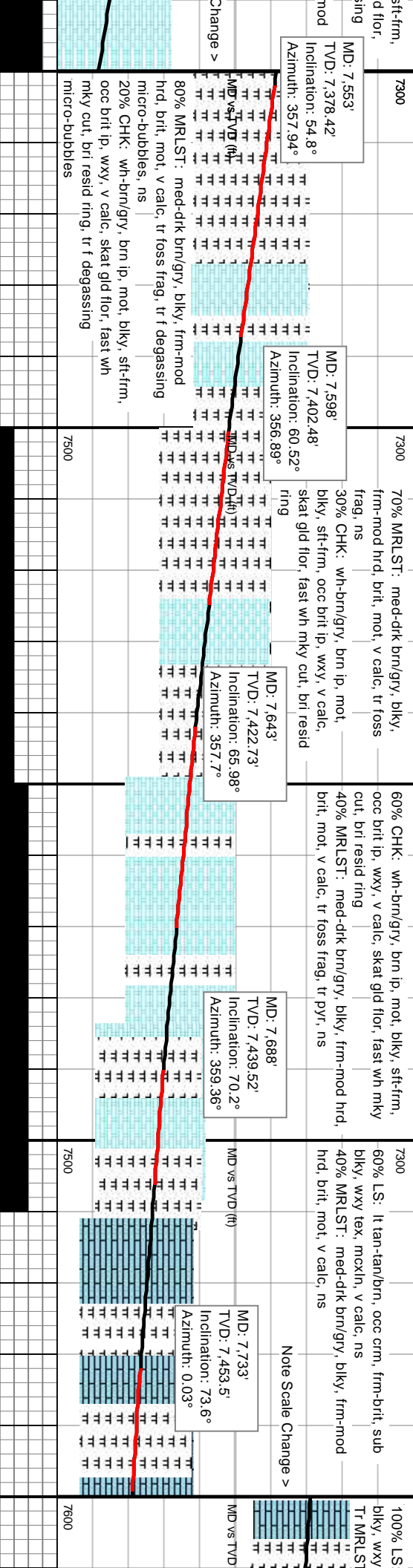
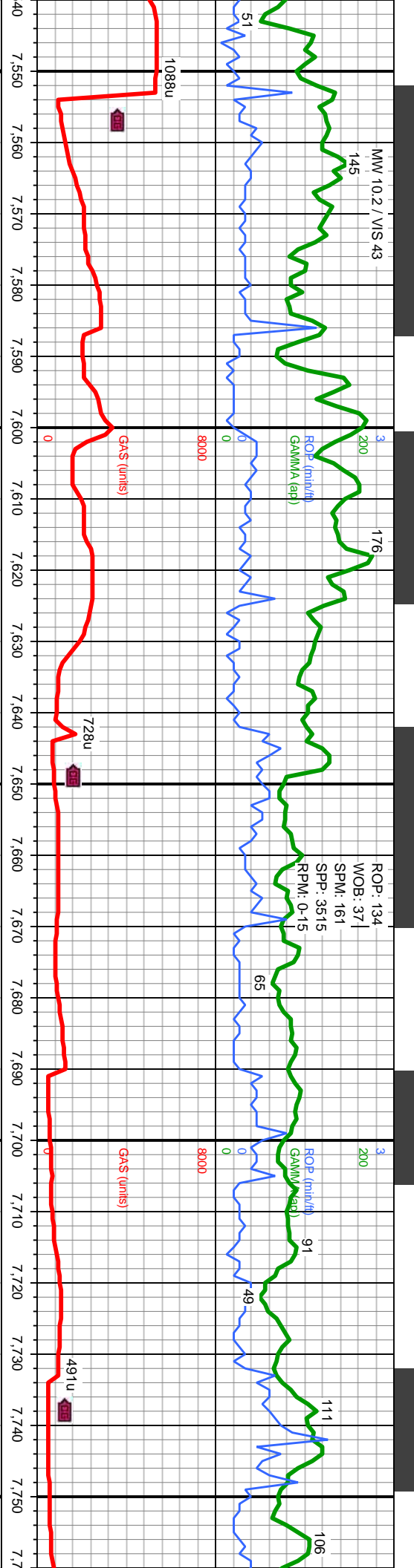


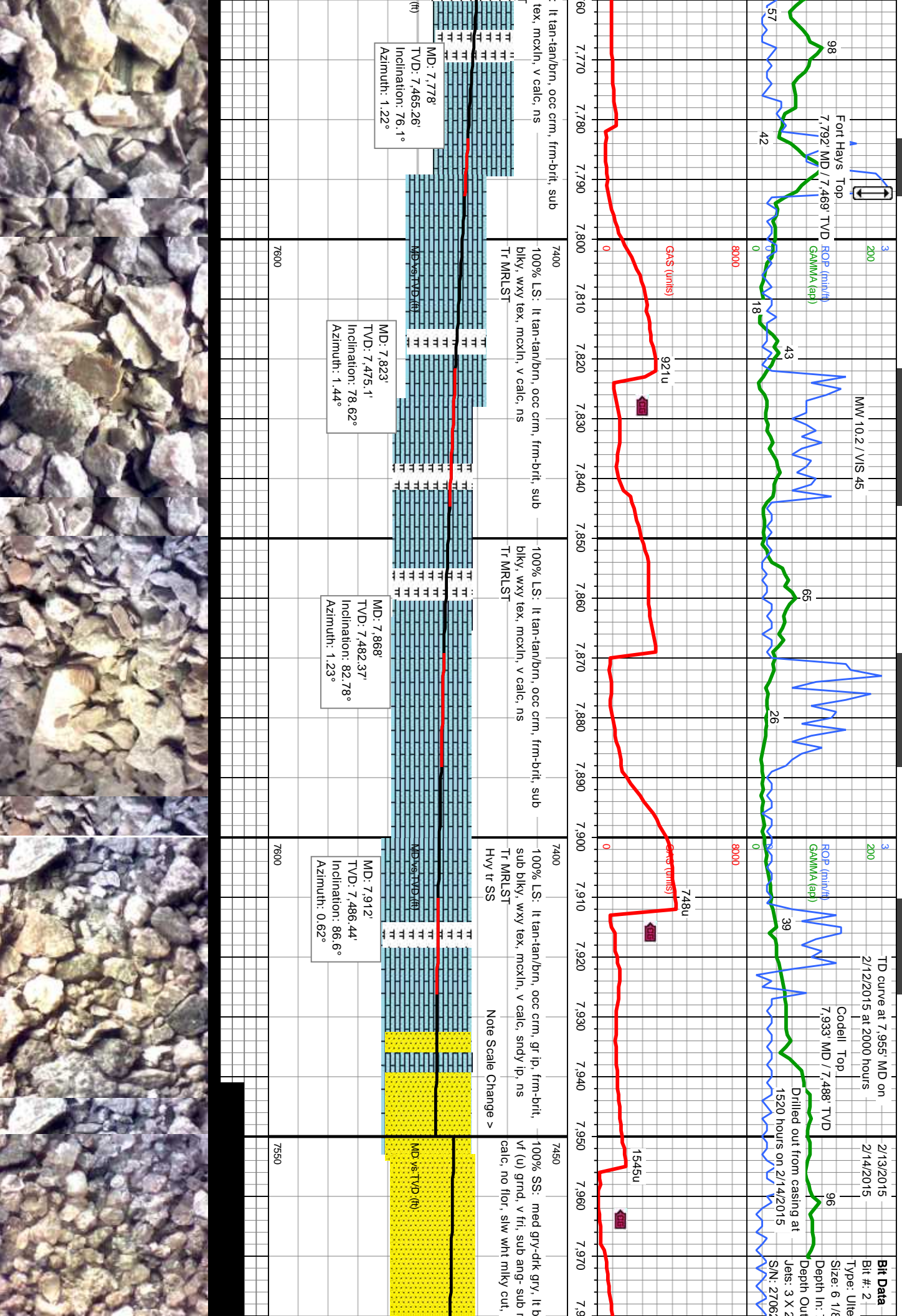


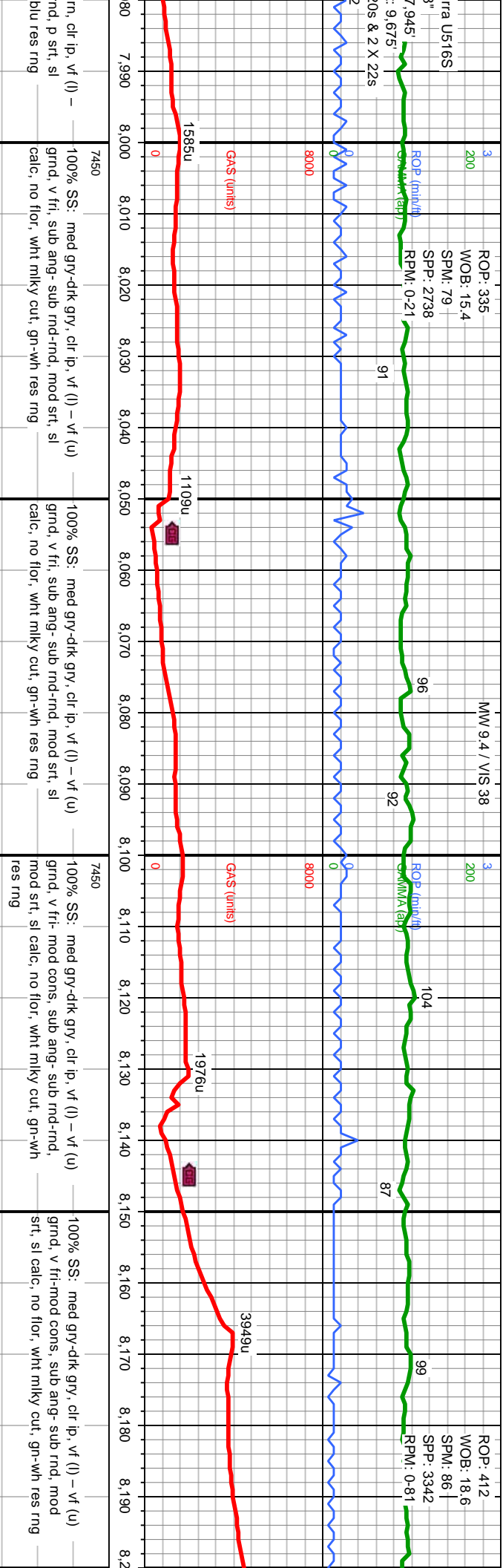


gry, drk brn, sb pily-blky, occ g-sily, sli calc, tr silsn, tr -drk brn/gry, blkly, frm-mod c, tr f degassing	100% MRLST: med-drk brn/gry, blkly, frm-mod hrd, brit, mot, v calc, tr f degassing micro-bubbles, ns	60% MRLST: med-drk brn/gry, blkly, frm-mod hrd, brit, mot, v calc, tr f degassing micro-bubbles, ns	40% CHK: wh-brn/gry, brn ip, mot, blkly, sft-frm, occ brit ip, wxy, v calc, foss frags, skat gld flr, fast wh mky cut, bri resid ring, tr f degassing micro-bubbles	80% CHK: wh-brn/gry, brn ip, mot, blkly, s occ brit ip, wxy, v calc, foss frags, skat gl fast wh mky cut, bri resid ring, tr f degass micro-bubbles	20% MRLST: med-drk brn/gry, blkly, frm- hrd, brit, mot, v calc, tr f degassing micro-bubbles, ns
MD: 7,329' TVD: 7,220.13' Inclination: 34.59° Azimuth: 357.76°	MD: 7,374' TVD: 7,256.25' Inclination: 38.62° Azimuth: 357.23°	MD: 7,419' TVD: 7,290.26' Inclination: 43.15° Azimuth: 356.5°	MD: 7,464' TVD: 7,322' Inclination: 47.1° Azimuth: 356.31°	MD: 7,509' TVD: 7,351.69' Inclination: 50.35° Azimuth: 357.75°	
Note Scale Change >					









MD vs TVD (ft)

MD: 7.995'
TVD: 7.489.73'
Inclination: 88.86°
Azimuth: 0.04°

7550

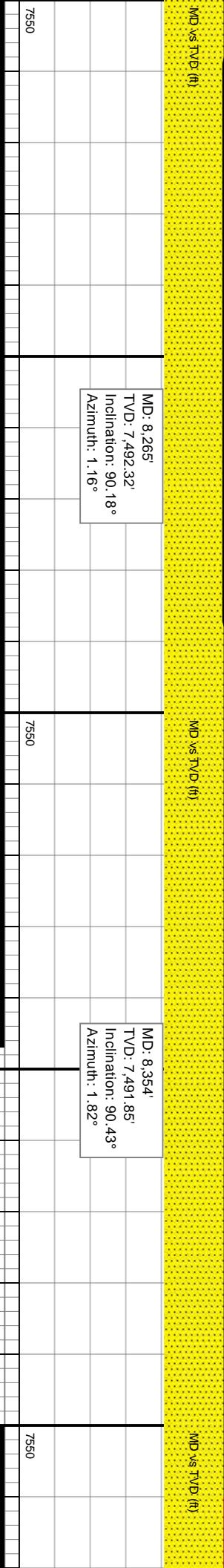
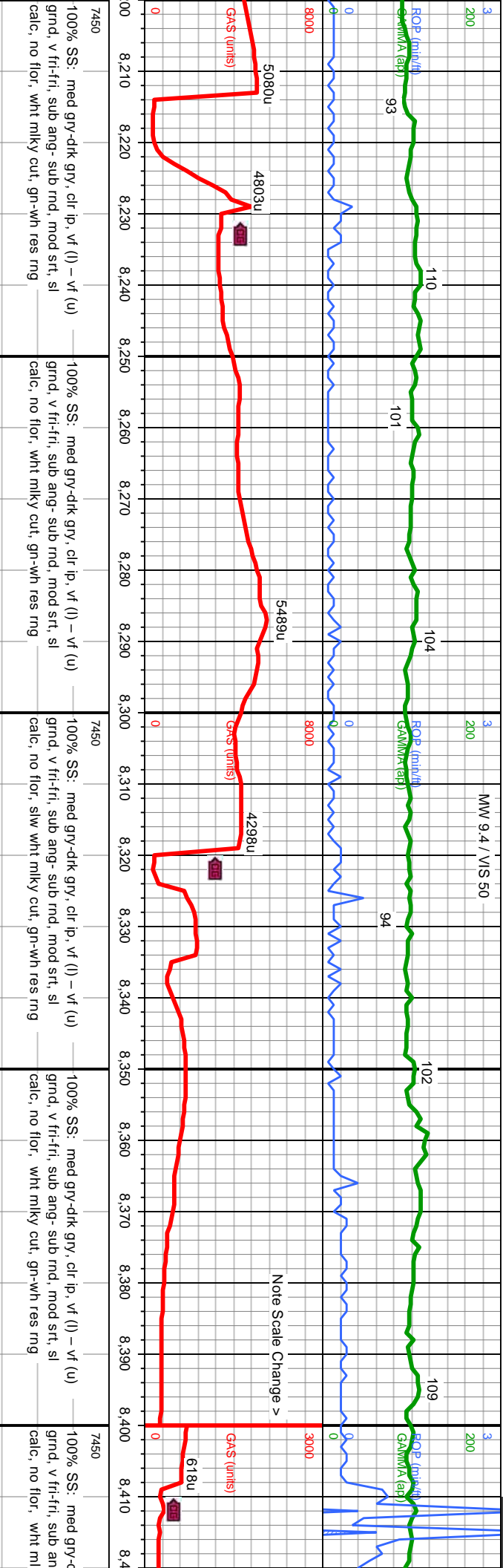
MD vs TVD (ft)

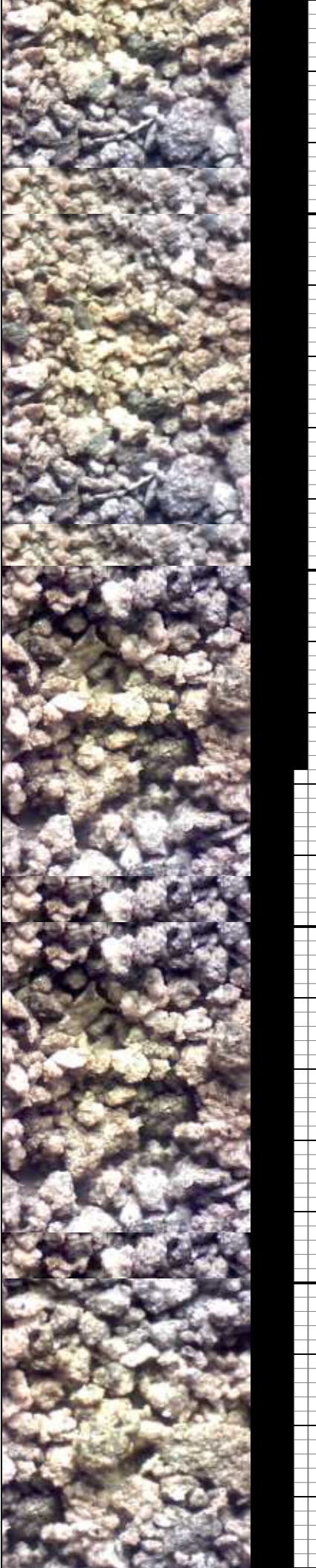
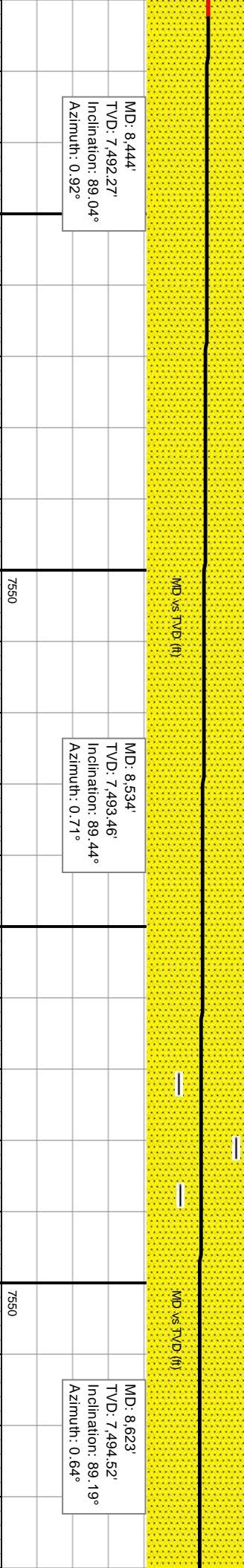
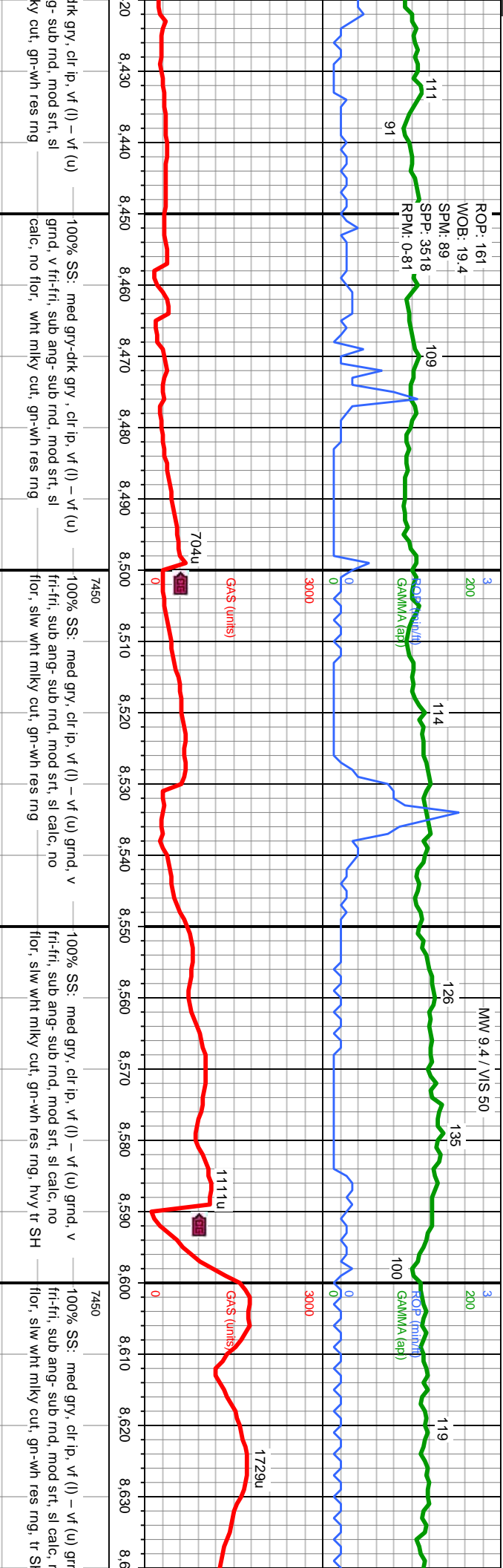
MD: 8.085'
TVD: 7.491.21'
Inclination: 89.26°
Azimuth: 0.28°

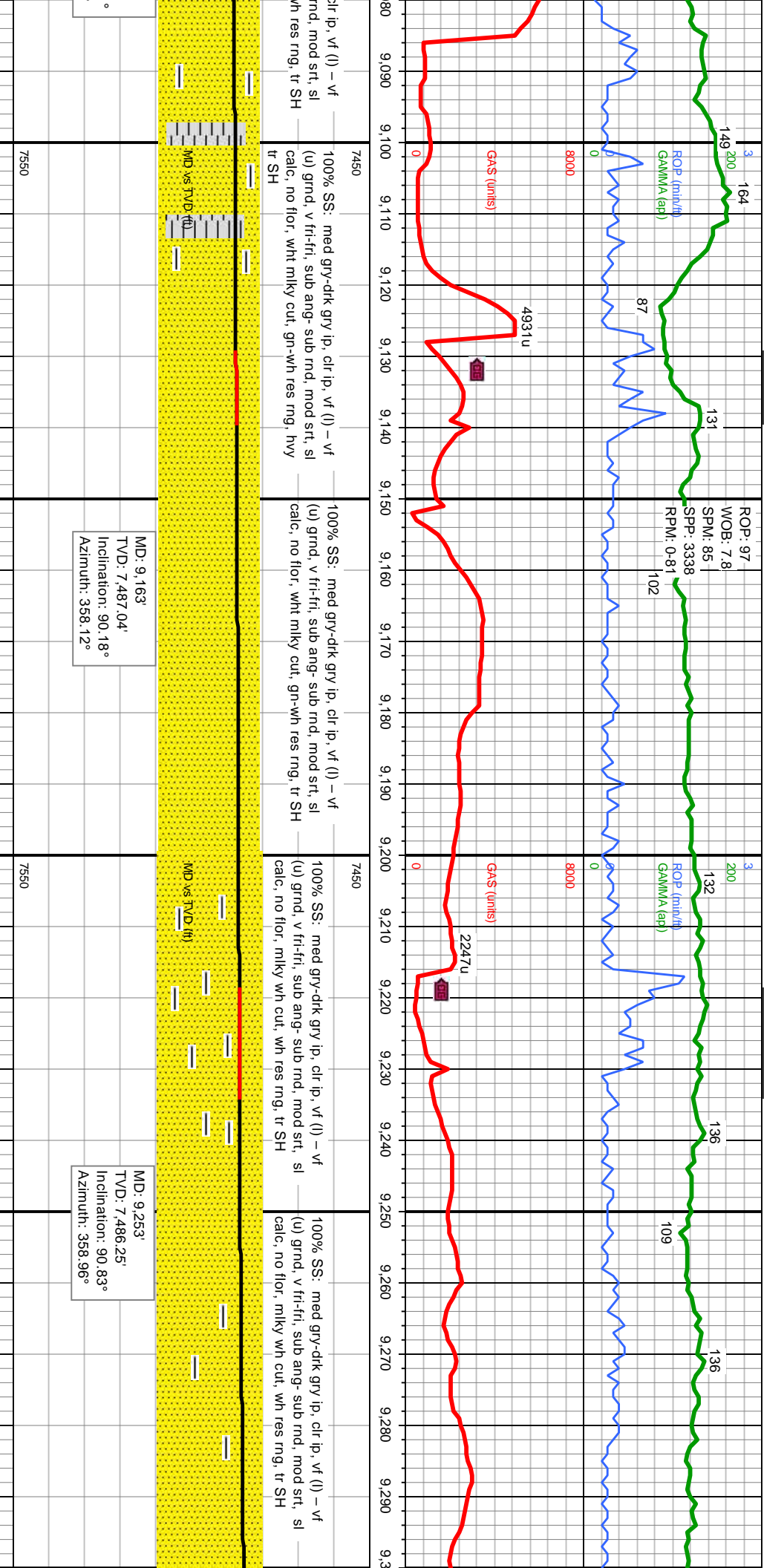
7550

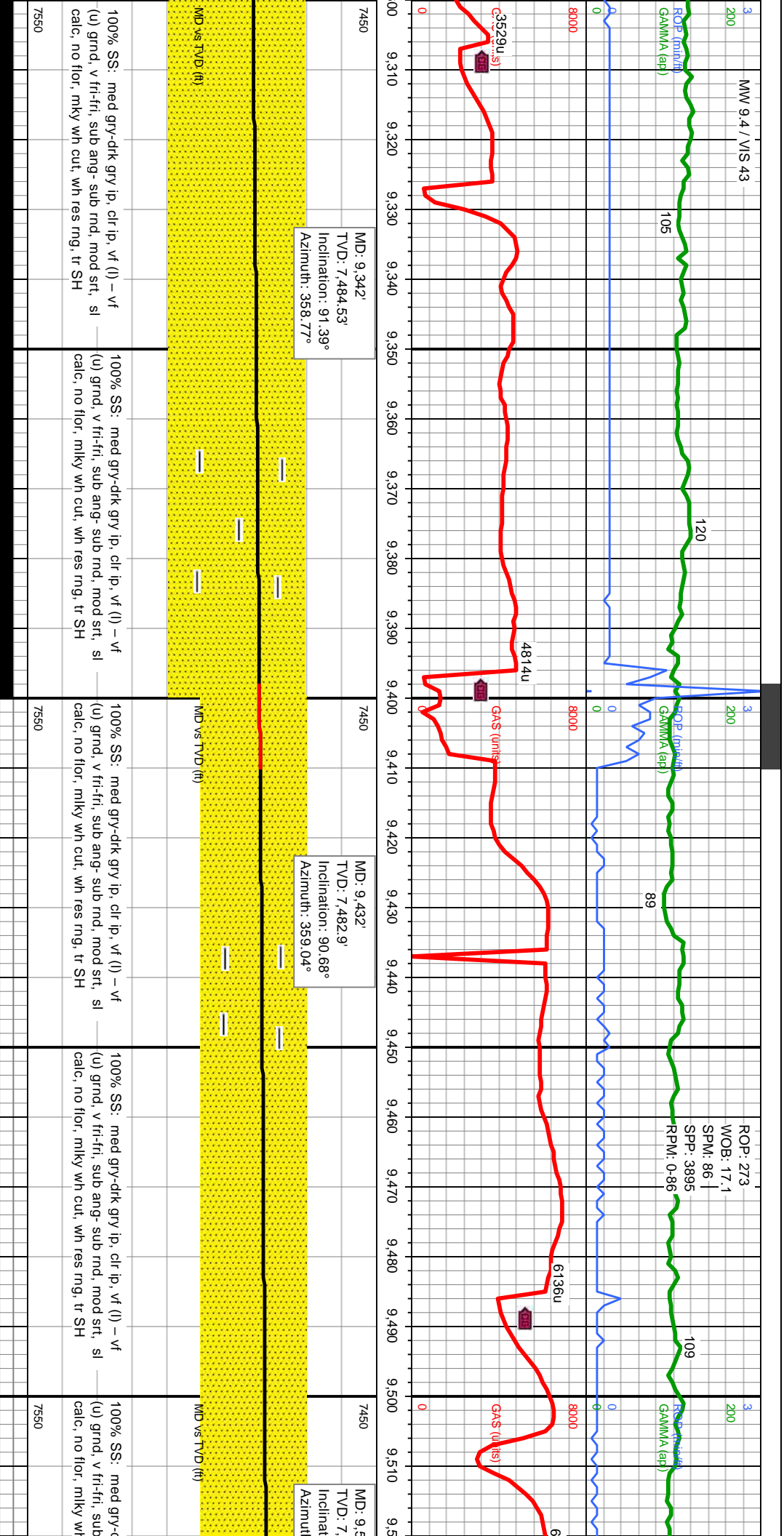
MD: 8.175'
TVD: 7.492.13'
Inclination: 89.57°
Azimuth: 0.4°

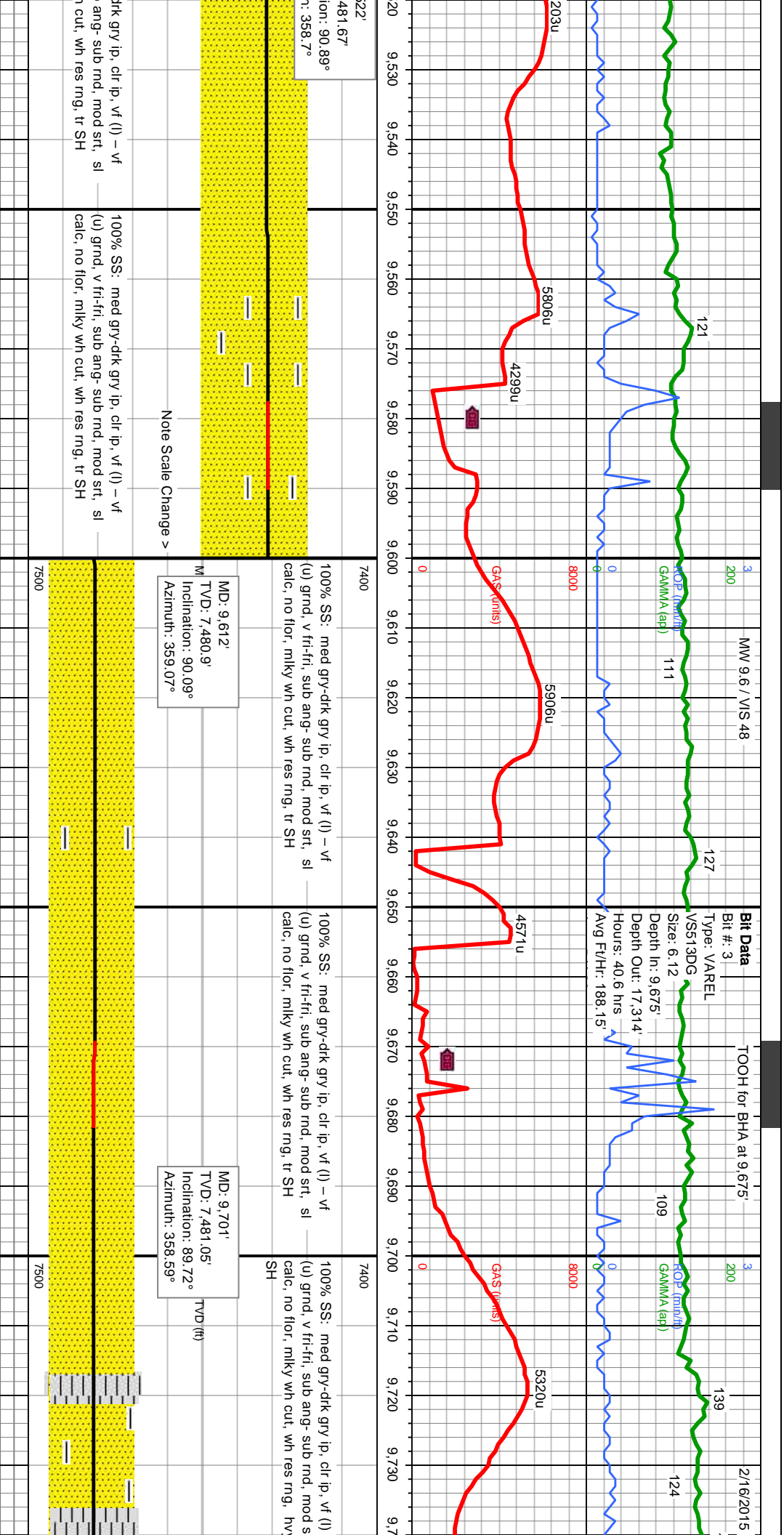


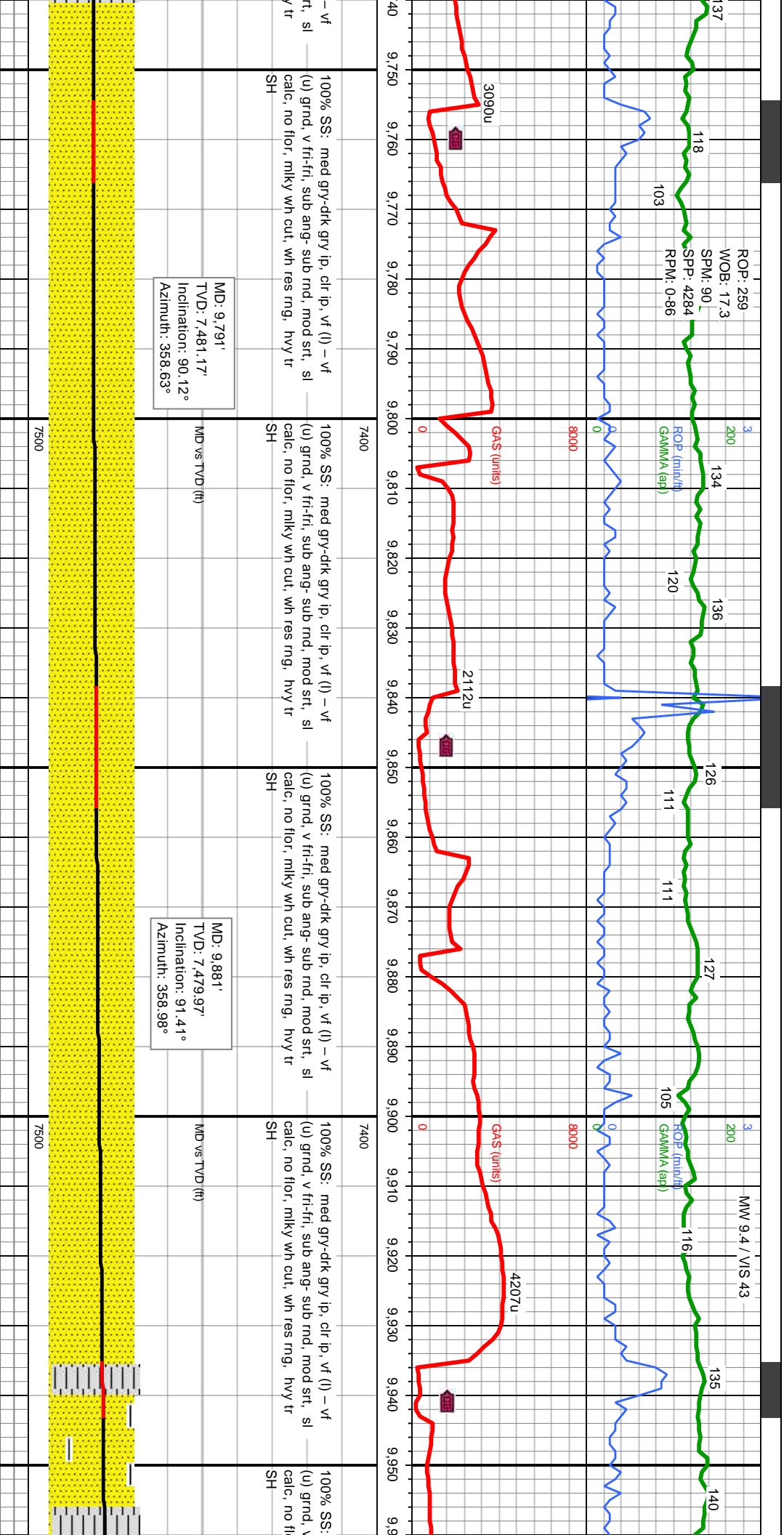


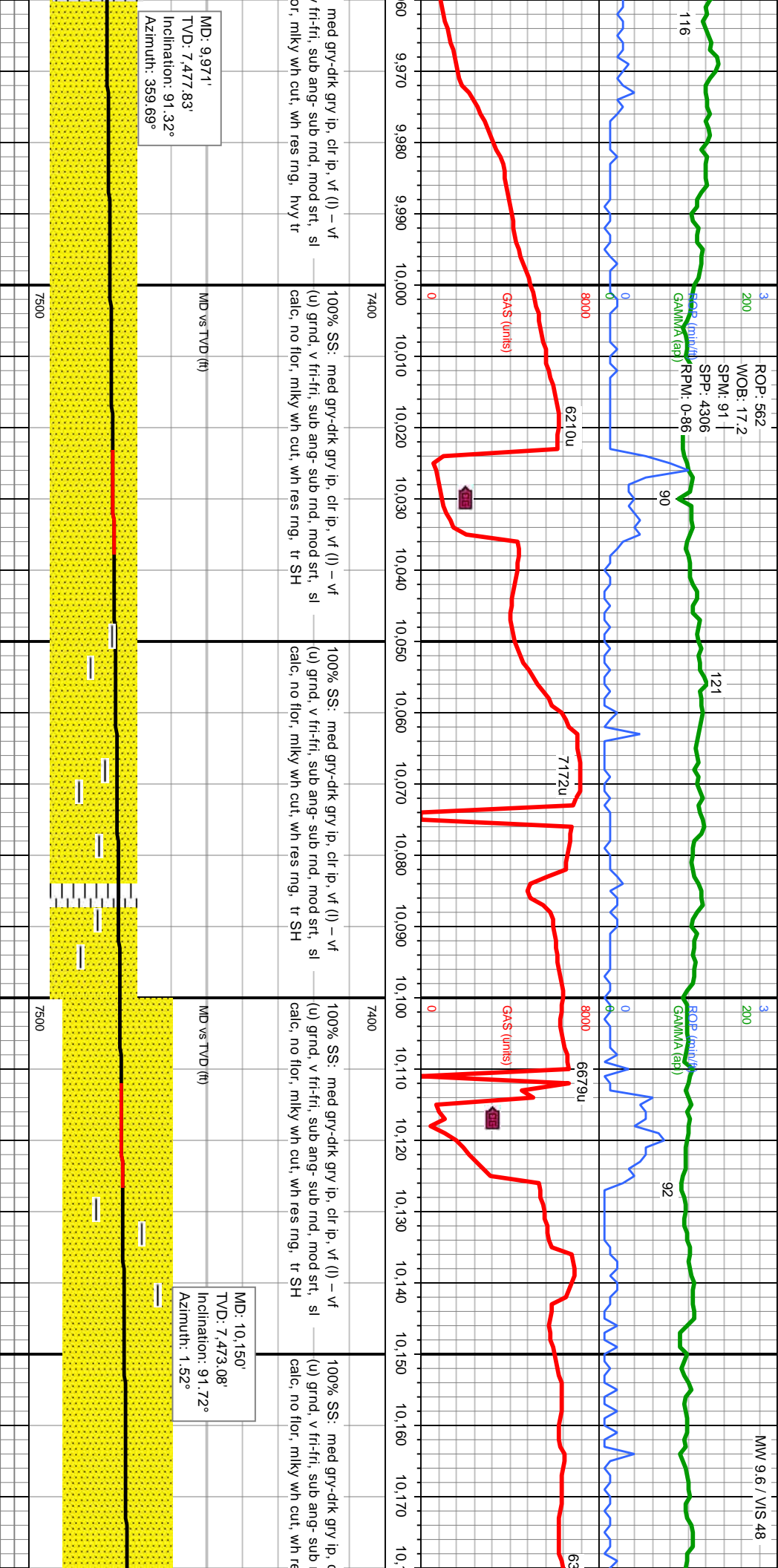


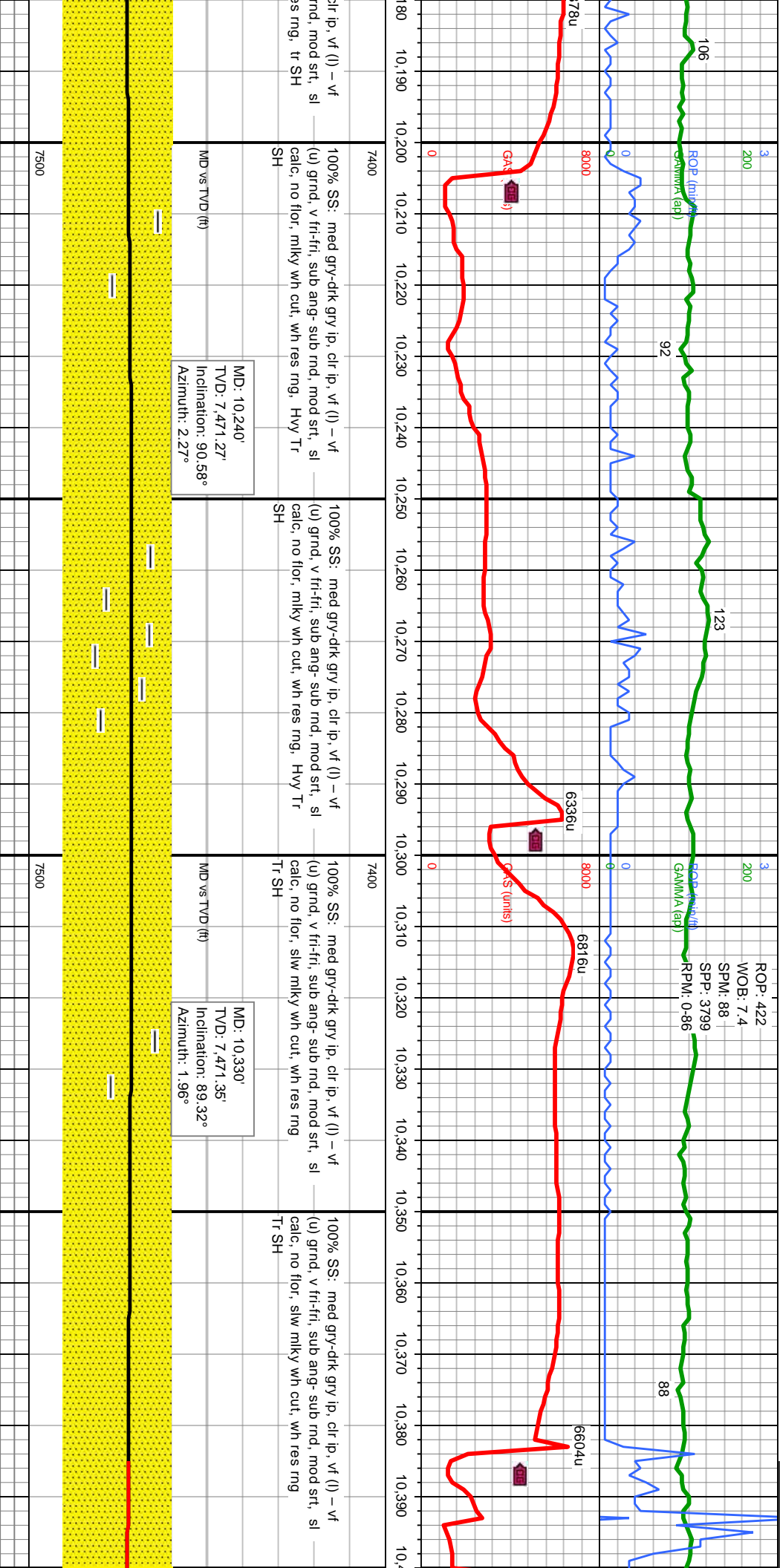


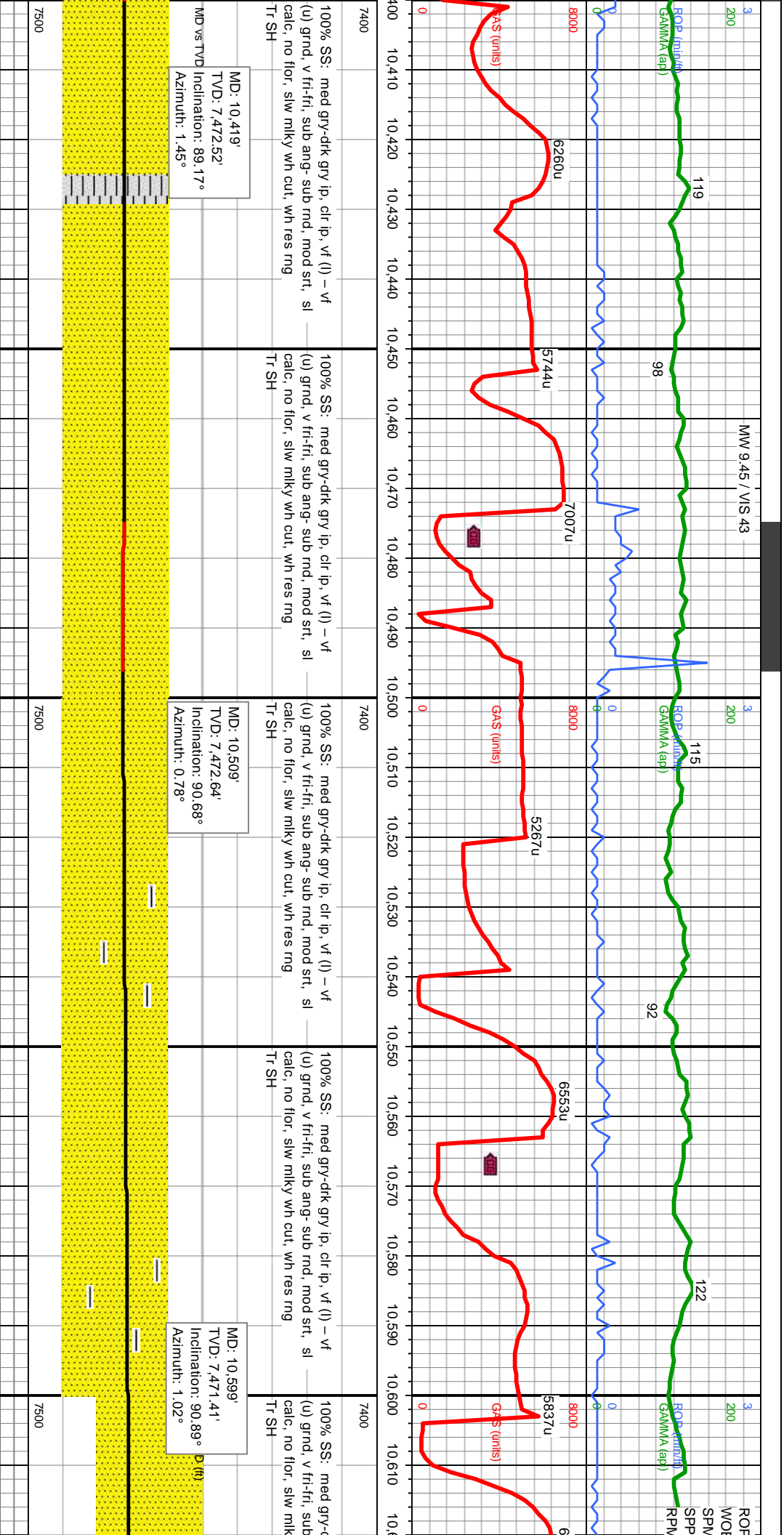


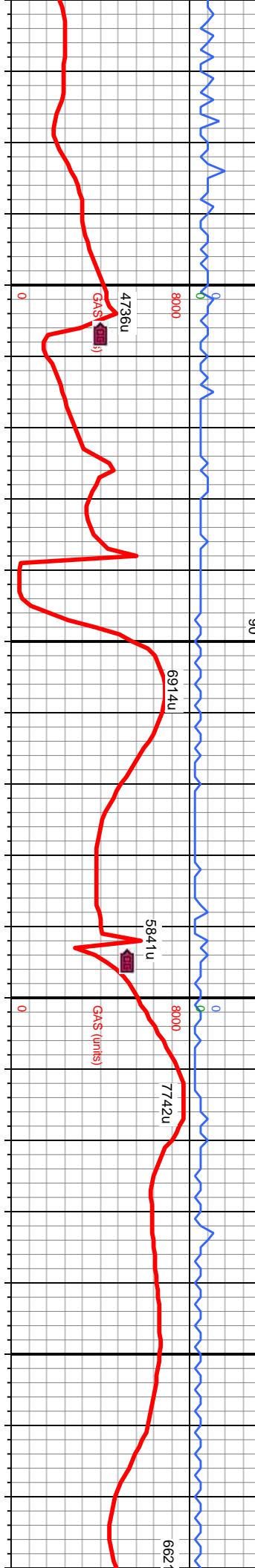
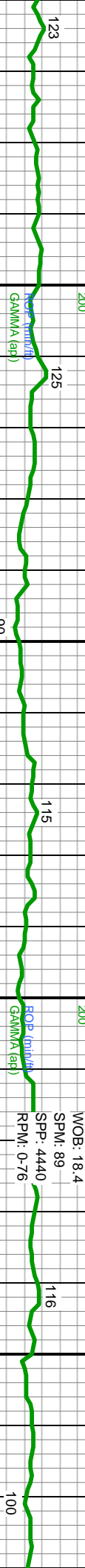












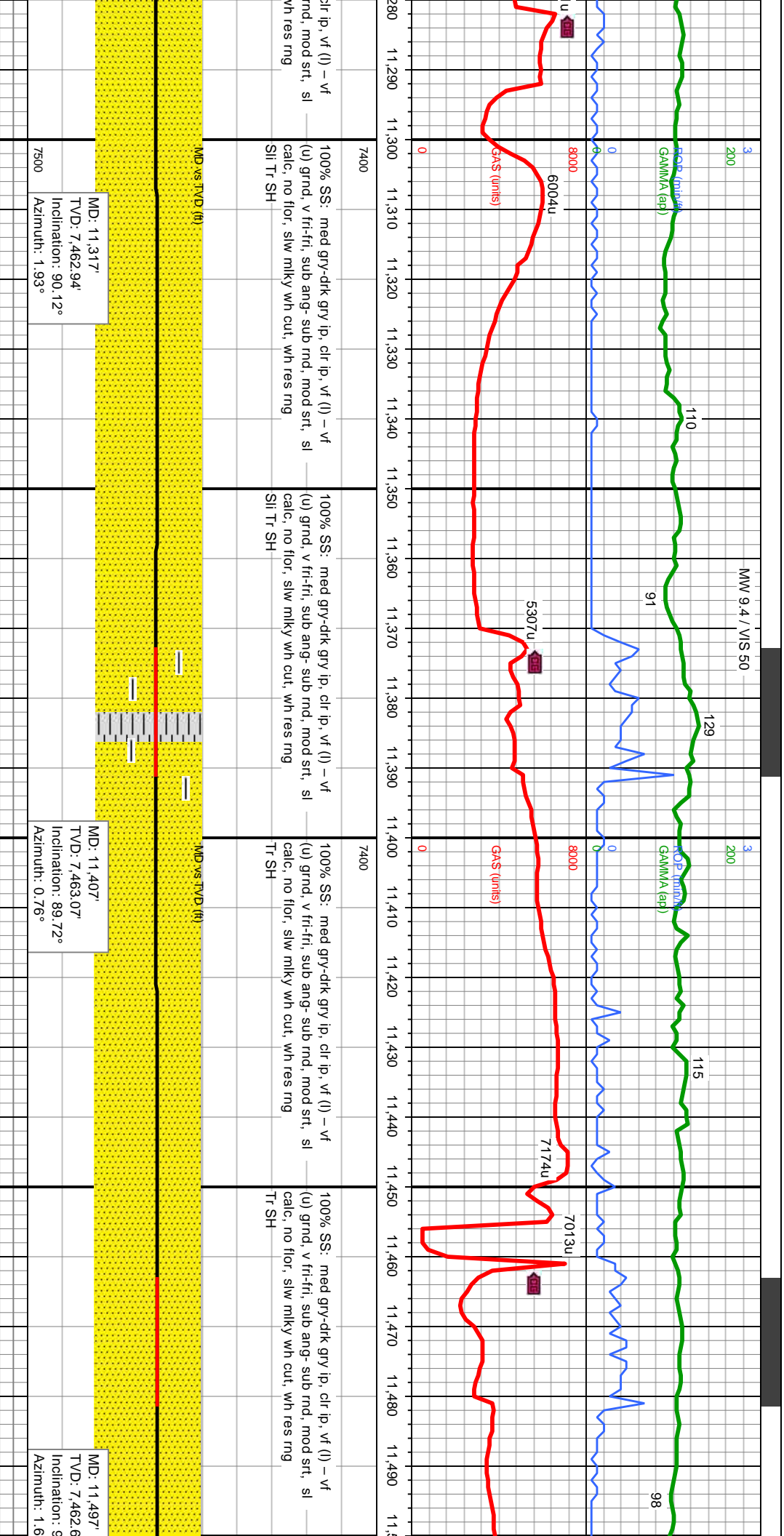
med gry-drk gry ip, clr ip, vf (l) - vf	100% SS: med gry-drk gry ip, clr ip, vf (l) - vf	100% SS: med gry-drk gry ip, clr ip, vf (l) - vf	100% SS: med gry-drk gry ip, c
fri-fri, sub ang- sub rnd, mod str, sl	(u) grnd, v fri-fri, sub ang- sub rnd, mod str, sl	(u) grnd, v fri-fri, sub ang- sub rnd, mod str, sl	(u) grnd, v fri-fri, sub ang- sub
or, fst mlky wh cut, wh res rng, Tr SH	calc, no flor, slw mlky wh cut, wh res rng	calc, no flor, slw mlky wh cut, wh res rng	calc, no flor, slw mlky wh cut, v
Tr SH	Tr SH	Si Tr SH	Si Tr SH

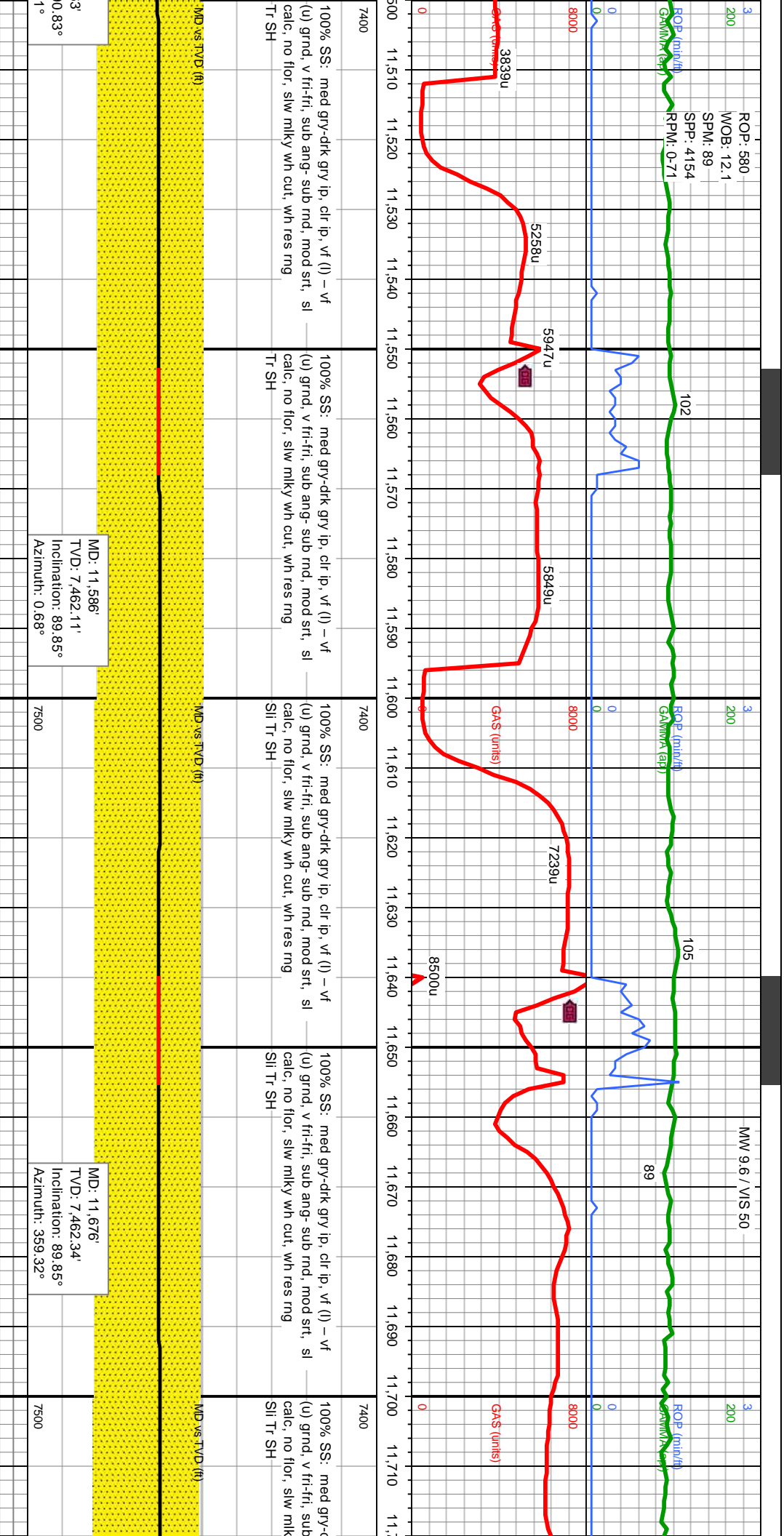
MD vs TVD (ft)

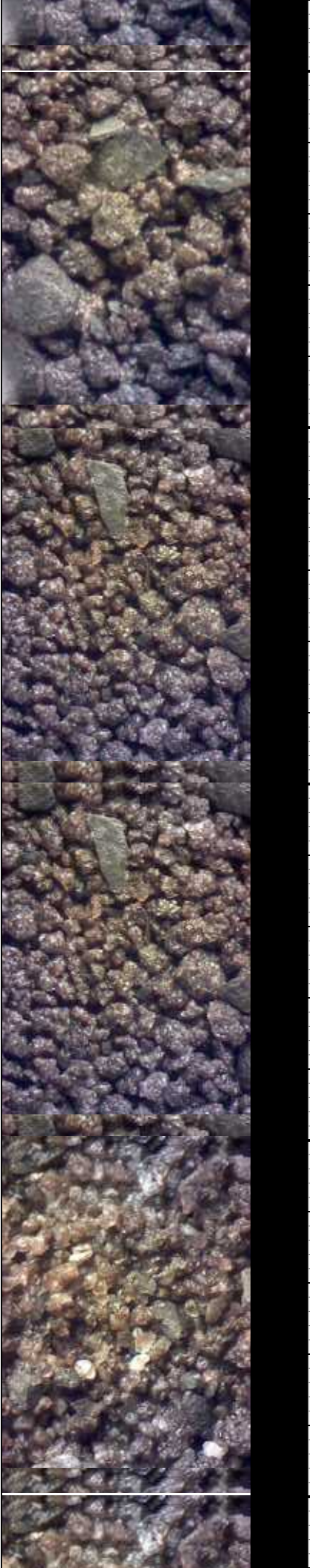
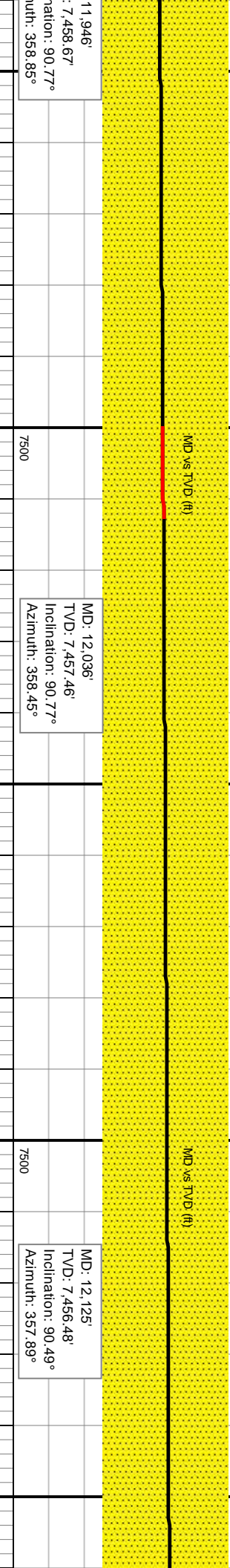
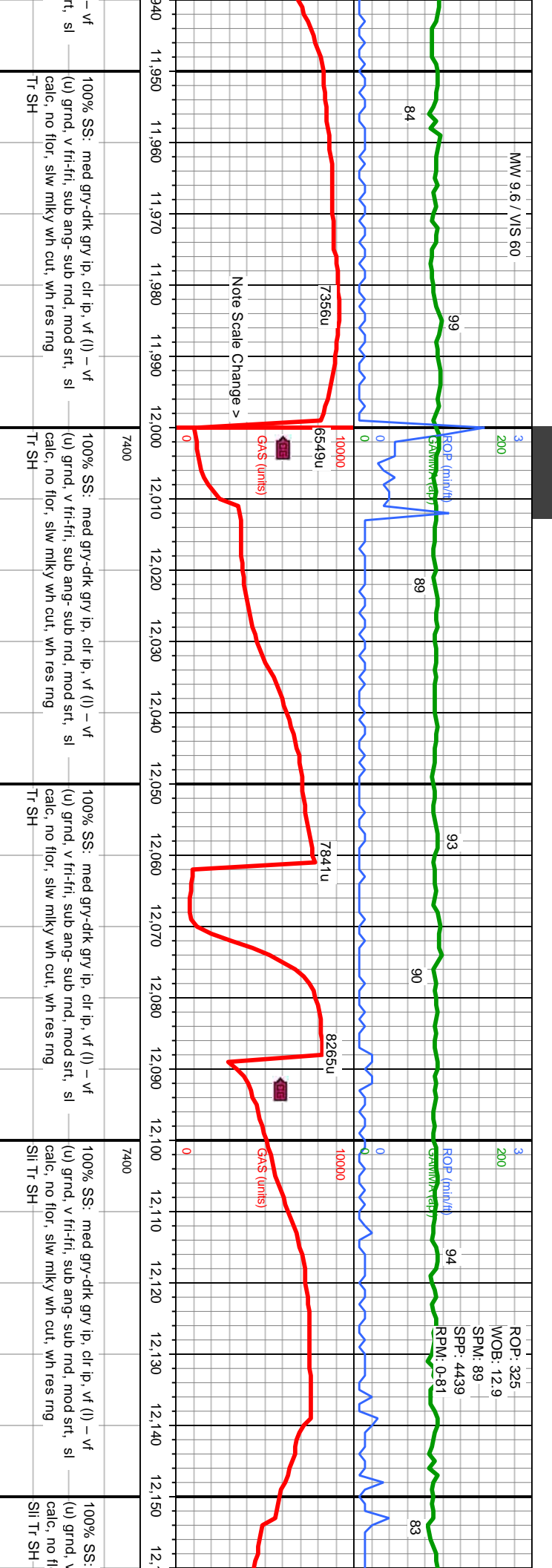
MD vs TVD (ft)

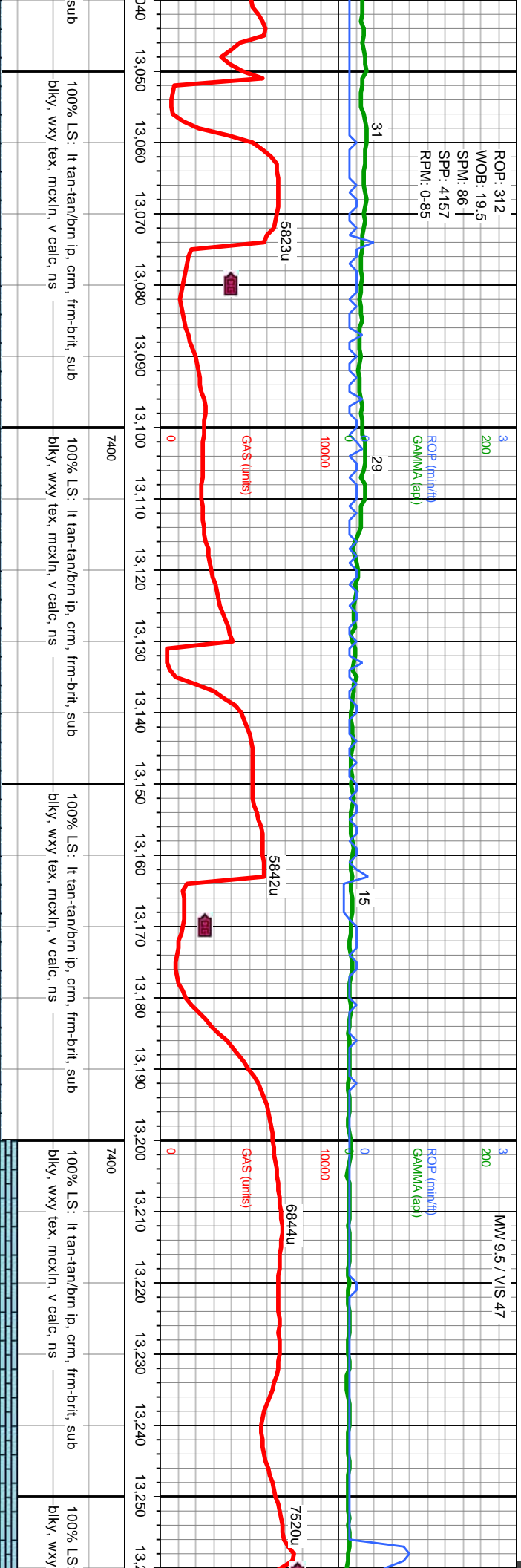
MD: 11,137'
TVD: 7,464.1'
Inclination: 90.62°
Azimuth: 1.37°







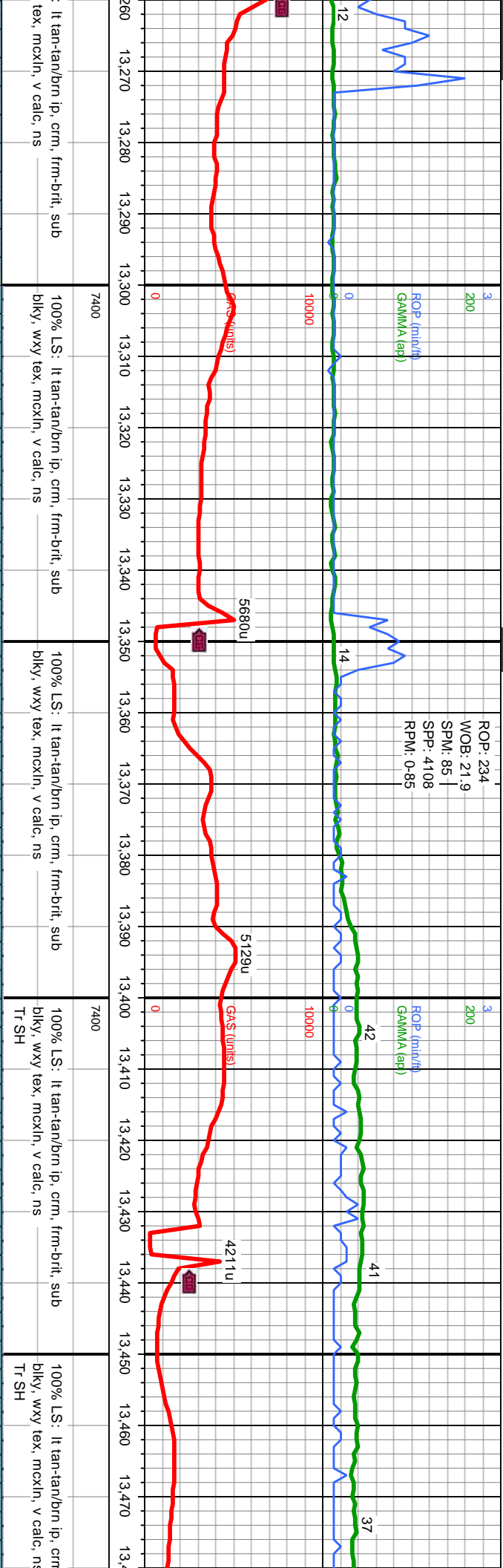




MD: 13,113'
TVD: 7,446.31'
Inclination: 90.58°
Azimuth: 1.03°

MD: 13,203'
TVD: 7,445.36'
Inclination: 90.64°
Azimuth: 1.22°



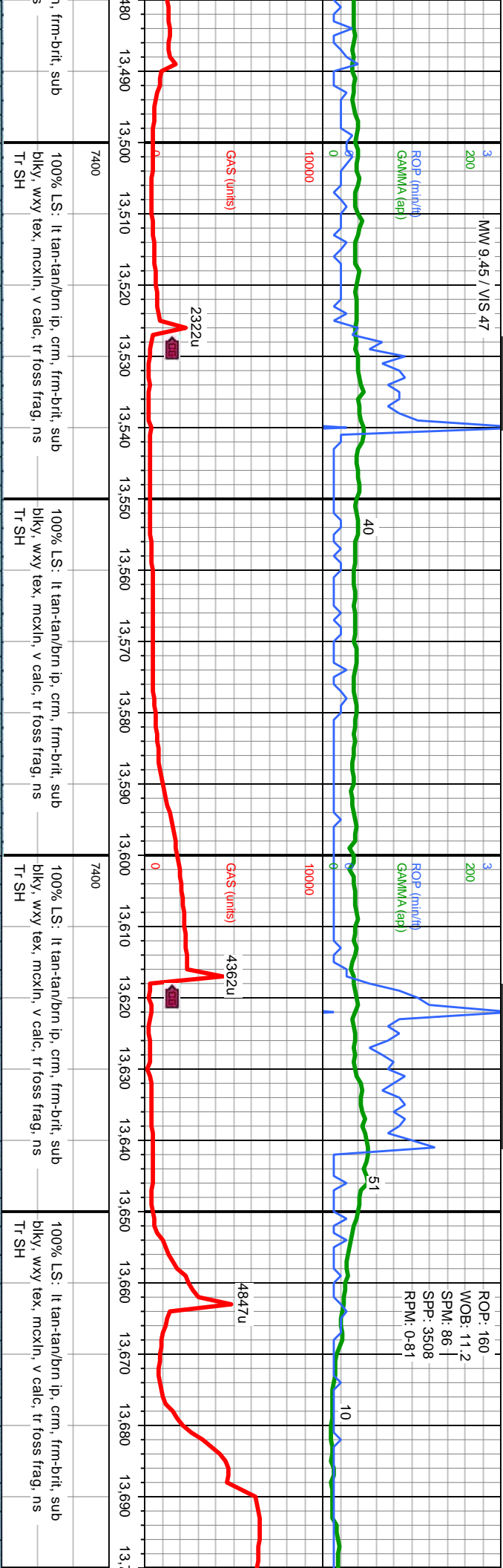


MD: 13,292'
TVD: 7,444.45'
Inclination: 90.52°
Azimuth: 0.11°

MD: 13,382'
TVD: 7,442.95'
Inclination: 91.39°
Azimuth: 359.84°

MD: 13,472'
TVD: 7,441.57'
Inclination: 90.37°
Azimuth: 358.3°

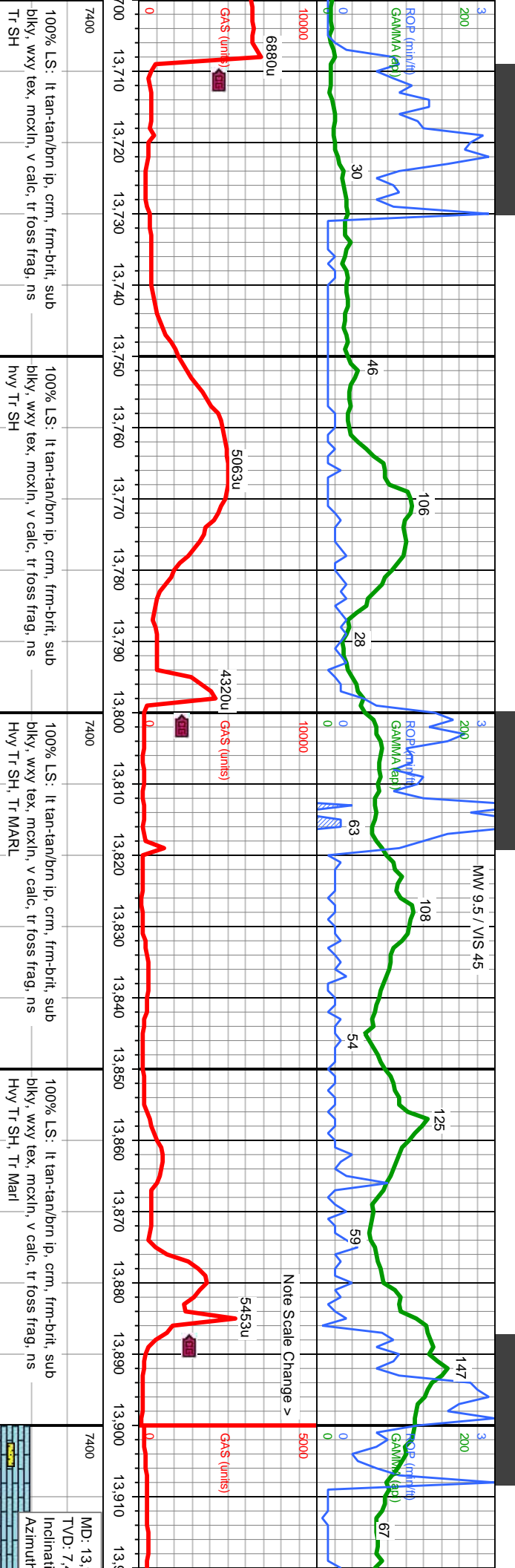




MD: 13.562'
TVD: 7.441.77'
Inclination: 89.38°
Azimuth: 355.35°

MD: 13.652'
TVD: 7.441.36'
Inclination: 91.14°
Azimuth: 356.3°



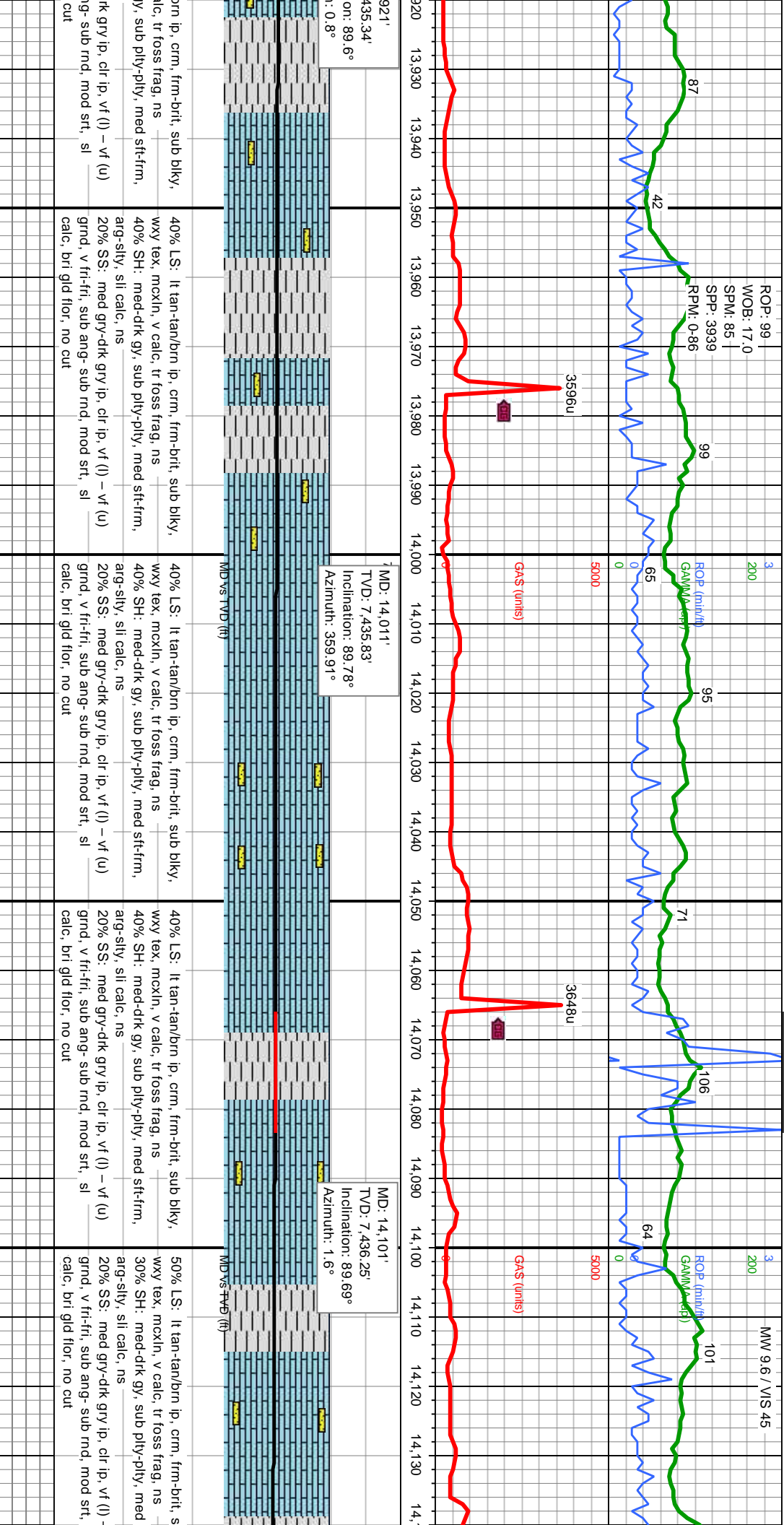


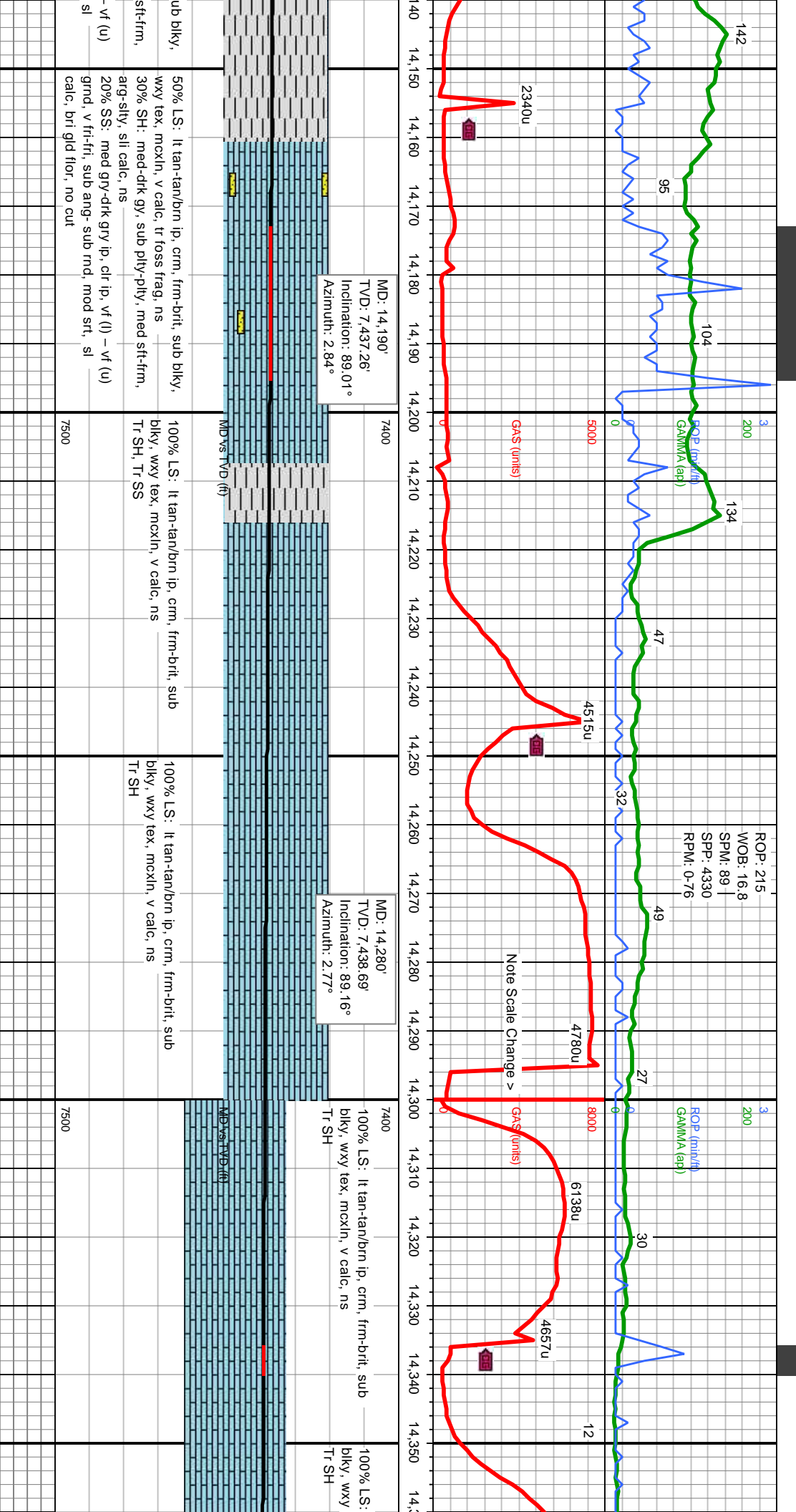
MD: 13,742'
TVD: 7,438.77'
Inclination: 92.16°
Azimuth: 358.44°

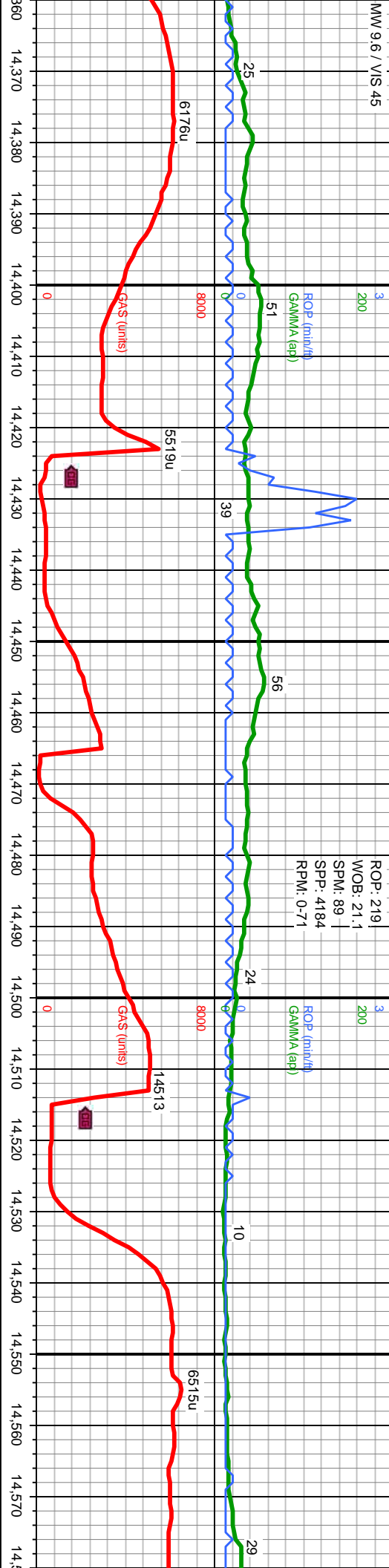
MD: 13,831'
TVD: 7,436.07'
Inclination: 91.32°
Azimuth: 359.78°

40% LS: lt tan-tan/brn ip, crm, frm-brit, sub blkly, wxy tex, mckln, v calc, tr foss frag, ns Tr SH
40% SH: med-dfk g arg-sily, sli calc, ns 20% SS: med gry-d grnd, v fri-fri, sub ar calc, bri gld flr, no









lt tan-tan/brn ip, crm, frm-brit, sub
tex, mcoxn, v calc, ns

100% LS: lt tan-tan/brn ip, crm, frm-brit, sub
biky, wxy tex, mcoxn, v calc, ns
Hvy Tr SH

100% LS: lt tan-tan/brn ip, crm, frm-brit, sub
biky, wxy tex, mcoxn, v calc, ns
Hvy Tr SH

100% LS: lt tan-tan/brn ip, crm, frm-brit, sub
biky, wxy tex, mcoxn, v calc, ns
Tr SH

100% LS: lt tan-tan/brn ip, crm, frm-brit, sub
biky, wxy tex, mcoxn, v calc, ns

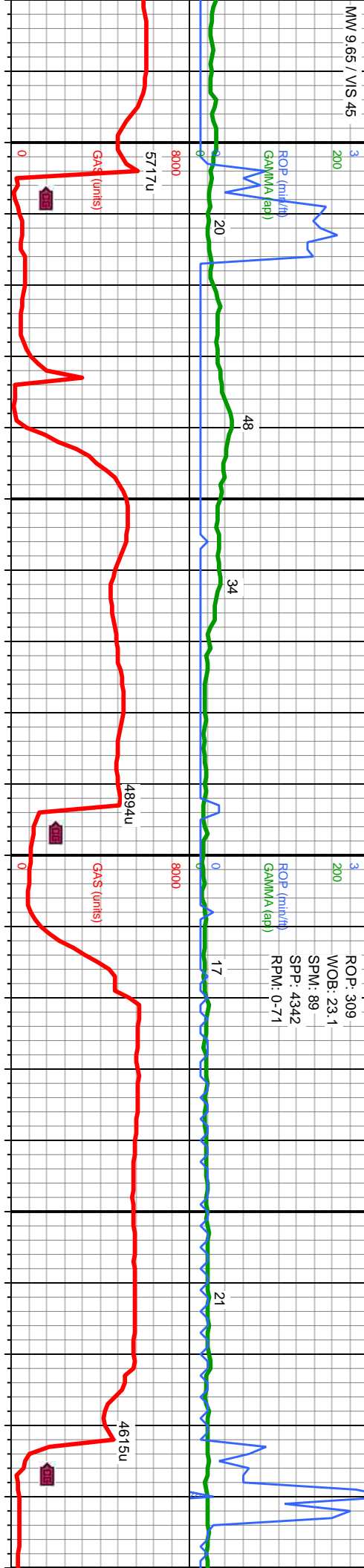
MD: 14,370'
TVD: 7,439.5'
Inclination: 89.81°
Azimuth: 2.69°

MD: 14,460'
TVD: 7,441.01'
Inclination: 88.27°
Azimuth: 2.2°

MD: 14,550'
TVD: 7,442.78'
Inclination: 89.47°
Azimuth: 2.13°



MW 9.65 / V/S 45



100% LS: lt tan-tan/brn ip, crm, frm-brit, sub blky, wxy tex, mexln, v calc, ns Tr SH	100% LS: lt tan-tan/brn ip, crm, frm-brit, sub blky, wxy tex, mexln, v calc, ns Tr SH	100% LS: lt tan-tan/brn ip, crm, frm-brit, sub blky, wxy tex, mexln, v calc, ns Sm Tr SH	100% LS: lt tan-tan/brn ip, crm, frm-brit, sub blky, wxy tex, mexln, v calc, ns Sm Tr SH
---	---	--	--

MD vs TVD (ft)

MD vs TVD (ft)

MD: 14,639'
TVD: 7,443.87'
Inclination: 89.13°
Azimuth: 0.64°

MD: 14,729'
TVD: 7,444.53'
Inclination: 90.03°
Azimuth: 0.84°



