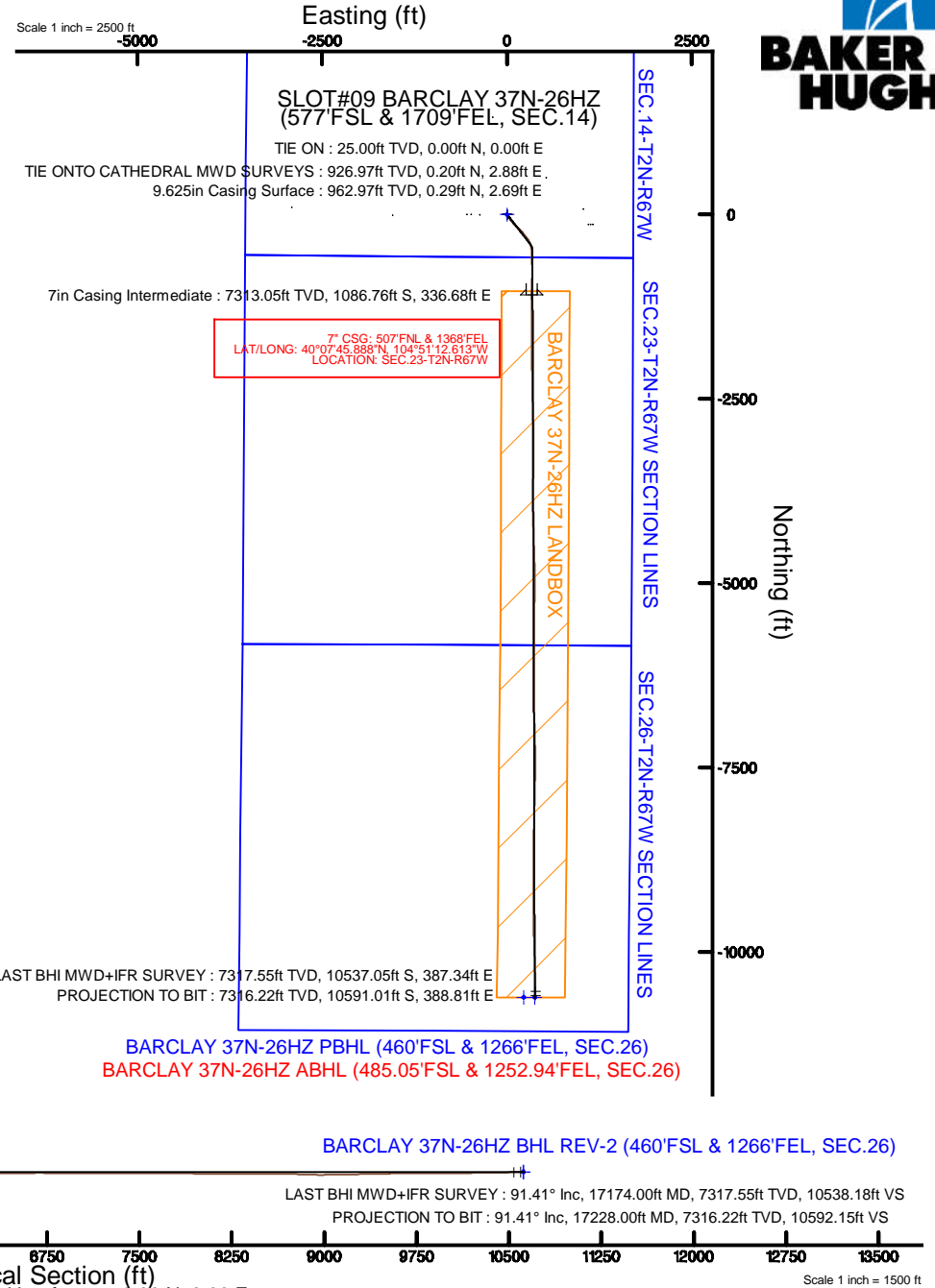
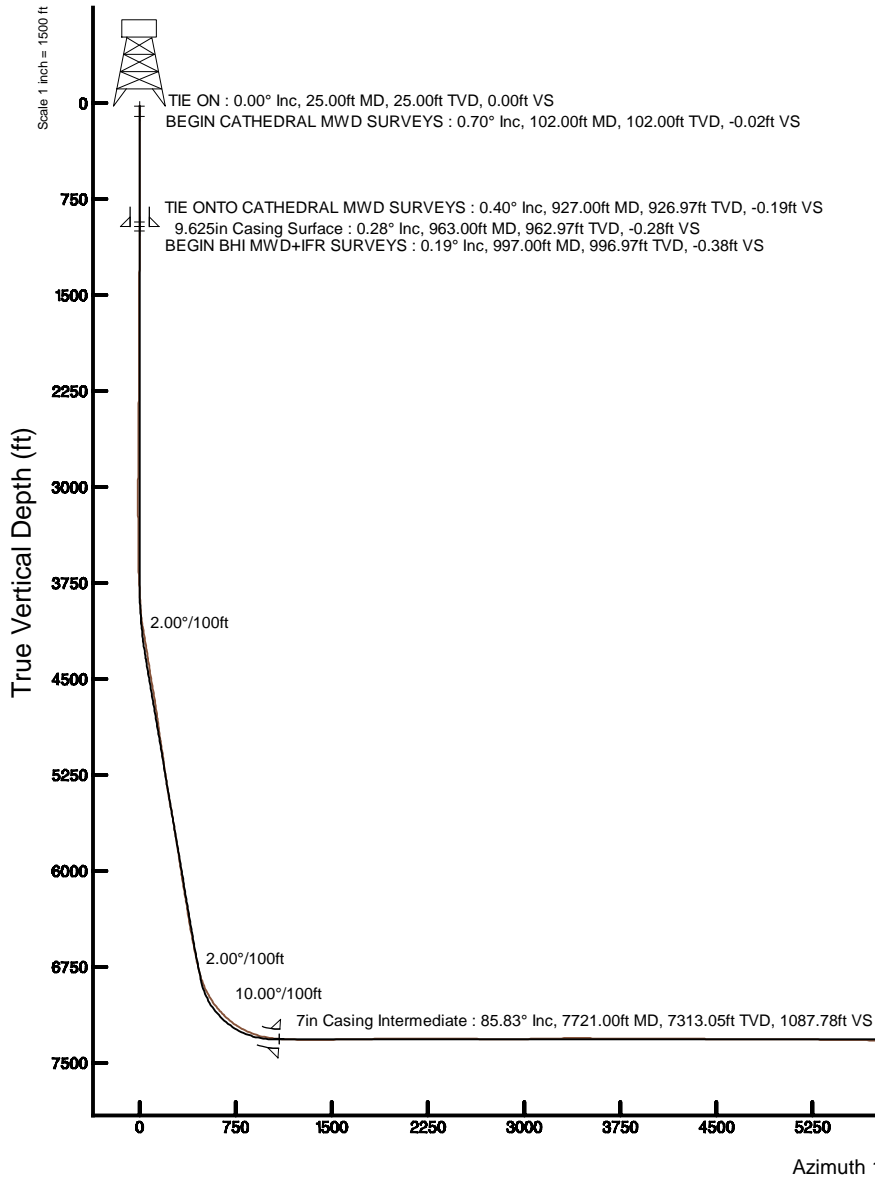


KERR-MCGEE OIL & GAS ONSHORE LP (LAMBERT STATE PLANE COORD)

Location: COLORADO Slot: SLOT#09 BARCLAY 37N-26HZ (577'FSL & 1709'FEL, SEC.14)
 Field: WELD COUNTY (KERR MCGEE) Well: BARCLAY 37N-26HZ
 Facility: SEC.14-T2N-R67W Wellbore: BARCLAY 37N-26HZ PWB

Plot reference wellpath is BARCLAY 37N-26HZ (REV-B.0) PWP

True vertical depths are referenced to PRECISION 595 (25'KB) (RKB)	Grid System: NAD83 / Lambert Colorado SP, Northern Zone (501), US feet
Measured depths are referenced to PRECISION 595 (25'KB) (RKB)	North Reference: True north
PRECISION 595 (25'KB) to Mean Sea Level: 4950 feet	Scale: True distance
Mean Sea Level to Mud line (At Slot: SLOT#09 BARCLAY 37N-26HZ (577'FSL & 1709'FEL, SEC.14)): 0 feet	Depths are in feet
Coordinates are in feet referenced to Slot	Created by: robiale01 on 2/10/2015



REFERENCE WELLPATH IDENTIFICATION			
Operator	KERR-MCGEE OIL & GAS ONSHORE LP (LAMBERT STATE PLANE COORD)	Slot	SLOT#09 BARCLAY 37N-26HZ (577'FSL & 1709'FEL, SEC.14)
Area	COLORADO	Well	BARCLAY 37N-26HZ
Field	WELD COUNTY (KERR MCGEE)	Wellbore	BARCLAY 37N-26HZ AWB <102-17228>
Facility	SEC.14-T2N-R67W		

REPORT SETUP INFORMATION			
Projection System	NAD83 / Lambert Colorado SP, Northern Zone (501), US feet	Software System	WellArchitect® 4.1.1
North Reference	True	User	Robiale01
Scale	0.999959	Report Generated	2/10/2015 at 9:07:16 AM
Convergence at slot	0.42° East	Database/Source file	WellArchitectDB/BARCLAY_37N-26HZ_AWB_102-17228_.xml

WELLPATH LOCATION						
	Local coordinates		Grid coordinates		Geographic coordinates	
	North[ft]	East[ft]	Easting[US ft]	Northing[US ft]	Latitude	Longitude
Slot Location	-3.54	514.04	3180428.45	1291732.23	40°07'56.627"N	104°51'16.947"W
Facility Reference Pt			3179914.43	1291732.03	40°07'56.662"N	104°51'23.565"W
Field Reference Pt			3197771.84	1268891.29	40°04'09.600"N	104°47'36.000"W

WELLPATH DATUM			
Calculation method	Minimum curvature	PRECISION 595 (25'KB) (RKB) to Facility Vertical Datum	4950.00ft
Horizontal Reference Pt	Slot	PRECISION 595 (25'KB) (RKB) to Mean Sea Level	4950.00ft
Vertical Reference Pt	PRECISION 595 (25'KB) (RKB)	PRECISION 595 (25'KB) (RKB) to Mud Line at Slot (SLOT#09 BARCLAY 37N-26HZ (577'FSL & 1709'FEL, SEC.14))	4950.00ft
MD Reference Pt	PRECISION 595 (25'KB) (RKB)	Section Origin	N 0.00, E 0.00 ft
Field Vertical Reference	Mean Sea Level	Section Azimuth	177.90°

REFERENCE WELLPATH IDENTIFICATION			
Operator	KERR-MCGEE OIL & GAS ONSHORE LP (LAMBERT STATE PLANE COORD)	Slot	SLOT#09 BARCLAY 37N-26HZ (577'FSL & 1709'FEL, SEC.14)
Area	COLORADO	Well	BARCLAY 37N-26HZ
Field	WELD COUNTY (KERR MCGEE)	Wellbore	BARCLAY 37N-26HZ AWB <102-17228>
Facility	SEC.14-T2N-R67W		

WELLPATH DATA (184 stations) † = interpolated/extrapolated station										
MD [ft]	Inclination [°]	Azimuth [°]	TVD [ft]	Vert Sect [ft]	North [ft]	East [ft]	Latitude	Longitude	DLS [°/100ft]	Comments
0.00†	0.000	87.300	0.00	0.00	0.00	0.00	40°07'56.627"N	104°51'16.947"W	0.00	
25.00	0.000	87.300	25.00	0.00	0.00	0.00	40°07'56.627"N	104°51'16.947"W	0.00	TIE ON
102.00	0.700	87.300	102.00	0.00	0.02	0.47	40°07'56.627"N	104°51'16.941"W	0.91	BEGIN CATHEDRAL MWD SURVEYS
181.00	0.700	84.500	180.99	-0.04	0.09	1.43	40°07'56.628"N	104°51'16.929"W	0.04	
259.00	0.500	88.800	258.99	-0.06	0.14	2.25	40°07'56.628"N	104°51'16.918"W	0.26	
340.00	0.500	92.900	339.98	-0.03	0.13	2.95	40°07'56.628"N	104°51'16.909"W	0.04	
420.00	0.300	73.100	419.98	-0.05	0.18	3.50	40°07'56.629"N	104°51'16.902"W	0.30	
500.00	0.500	98.400	499.98	-0.04	0.19	4.05	40°07'56.629"N	104°51'16.895"W	0.33	
580.00	0.200	112.600	579.98	0.08	0.08	4.52	40°07'56.628"N	104°51'16.889"W	0.39	
660.00	0.400	258.500	659.98	0.19	-0.03	4.38	40°07'56.627"N	104°51'16.891"W	0.72	
740.00	0.300	278.400	739.98	0.20	-0.05	3.90	40°07'56.626"N	104°51'16.897"W	0.19	
820.00	0.400	283.400	819.98	0.08	0.04	3.42	40°07'56.627"N	104°51'16.903"W	0.13	
900.00	0.200	288.200	899.97	-0.04	0.15	3.01	40°07'56.628"N	104°51'16.908"W	0.25	
927.00	0.400	290.700	926.97	-0.09	0.20	2.88	40°07'56.629"N	104°51'16.910"W	0.74	TIE ONTO CATHEDRAL MWD SURVEYS
997.00	0.190	327.600	996.97	-0.29	0.38	2.59	40°07'56.631"N	104°51'16.914"W	0.39	BEGIN BHI MWD+IFR SURVEYS
1185.00	0.320	300.400	1184.97	-0.84	0.91	1.97	40°07'56.636"N	104°51'16.922"W	0.09	
1568.00	0.640	318.450	1567.96	-3.07	3.05	-0.37	40°07'56.657"N	104°51'16.952"W	0.09	
1945.00	0.390	286.850	1944.94	-5.11	5.00	-3.00	40°07'56.676"N	104°51'16.986"W	0.10	
2304.00	0.520	299.240	2303.93	-6.35	6.15	-5.59	40°07'56.688"N	104°51'17.019"W	0.05	
2663.00	0.780	306.620	2662.91	-8.73	8.41	-8.97	40°07'56.710"N	104°51'17.062"W	0.08	
3022.00	0.920	329.240	3021.87	-12.79	12.34	-12.40	40°07'56.749"N	104°51'17.107"W	0.10	
3112.00	0.650	184.420	3111.87	-12.91	12.45	-12.81	40°07'56.750"N	104°51'17.112"W	1.67	
3291.00	0.370	227.660	3290.86	-11.53	11.05	-13.32	40°07'56.736"N	104°51'17.118"W	0.26	
3471.00	0.440	251.960	3470.86	-10.97	10.44	-14.41	40°07'56.730"N	104°51'17.132"W	0.10	
3560.00	1.060	175.110	3559.85	-10.05	9.52	-14.66	40°07'56.721"N	104°51'17.136"W	1.18	
3650.00	2.490	145.470	3649.80	-7.57	7.08	-13.48	40°07'56.697"N	104°51'17.121"W	1.84	
3740.00	3.670	136.980	3739.67	-3.74	3.36	-10.41	40°07'56.660"N	104°51'17.081"W	1.40	
3830.00	4.560	127.480	3829.44	0.72	-0.92	-5.60	40°07'56.618"N	104°51'17.019"W	1.24	
3919.00	6.180	128.080	3918.05	6.06	-6.03	0.98	40°07'56.567"N	104°51'16.934"W	1.82	
4009.00	7.480	140.330	4007.41	13.83	-13.53	8.53	40°07'56.493"N	104°51'16.837"W	2.16	
4099.00	10.800	147.410	4096.26	25.74	-25.14	16.81	40°07'56.379"N	104°51'16.731"W	3.89	
4189.00	11.850	147.400	4184.51	40.97	-40.03	26.33	40°07'56.231"N	104°51'16.608"W	1.17	
4279.00	10.900	146.870	4272.74	56.23	-54.95	35.96	40°07'56.084"N	104°51'16.484"W	1.06	
4368.00	10.320	140.970	4360.22	69.81	-68.19	45.58	40°07'55.953"N	104°51'16.360"W	1.38	
4458.00	11.320	140.800	4448.62	83.30	-81.29	56.24	40°07'55.824"N	104°51'16.223"W	1.11	
4548.00	12.600	141.520	4536.66	98.25	-95.82	67.93	40°07'55.680"N	104°51'16.072"W	1.43	
4638.00	12.100	140.250	4624.58	113.62	-110.76	80.07	40°07'55.532"N	104°51'15.916"W	0.63	
4817.00	11.010	138.780	4799.95	141.74	-138.04	103.33	40°07'55.263"N	104°51'15.617"W	0.63	
4907.00	11.280	130.500	4888.26	154.37	-150.22	115.69	40°07'55.142"N	104°51'15.458"W	1.80	
4997.00	11.810	132.780	4976.44	166.82	-162.20	129.14	40°07'55.024"N	104°51'15.284"W	0.78	
5086.00	12.360	134.920	5063.46	180.22	-175.11	142.57	40°07'54.897"N	104°51'15.111"W	0.80	
5266.00	11.230	132.190	5239.66	206.56	-200.48	169.20	40°07'54.646"N	104°51'14.769"W	0.70	
5355.00	12.160	131.820	5326.81	219.11	-212.55	182.61	40°07'54.527"N	104°51'14.596"W	1.05	
5535.00	13.680	142.800	5502.28	249.68	-242.16	209.61	40°07'54.234"N	104°51'14.248"W	1.60	
5625.00	11.640	145.610	5590.09	266.07	-258.13	221.18	40°07'54.076"N	104°51'14.099"W	2.37	

REFERENCE WELLPATH IDENTIFICATION			
Operator	KERR-MCGEE OIL & GAS ONSHORE LP (LAMBERT STATE PLANE COORD)	Slot	SLOT#09 BARCLAY 37N-26HZ (577'FSL & 1709'FEL, SEC.14)
Area	COLORADO	Well	BARCLAY 37N-26HZ
Field	WELD COUNTY (KERR MCGEE)	Wellbore	BARCLAY 37N-26HZ AWB <102-17228>
Facility	SEC.14-T2N-R67W		

WELLPATH DATA (184 stations) † = interpolated/extrapolated station										
MD [ft]	Inclination [°]	Azimuth [°]	TVD [ft]	Vert Sect [ft]	North [ft]	East [ft]	Latitude	Longitude	DLS ["/100ft]	Comments
5715.00	10.860	141.990	5678.36	280.61	-272.30	231.53	40°07'53.936"N	104°51'13.966"W	1.17	
5803.00	12.360	145.880	5764.56	295.31	-286.63	241.91	40°07'53.794"N	104°51'13.832"W	1.92	
5893.00	11.390	141.440	5852.63	310.63	-301.55	252.86	40°07'53.647"N	104°51'13.692"W	1.48	
5983.00	9.870	138.770	5941.08	323.76	-314.30	263.48	40°07'53.521"N	104°51'13.555"W	1.77	
6074.00	10.880	143.450	6030.60	336.89	-327.07	273.74	40°07'53.395"N	104°51'13.423"W	1.44	
6164.00	11.710	144.750	6118.85	351.54	-341.35	284.07	40°07'53.254"N	104°51'13.290"W	0.96	
6253.00	11.190	148.880	6206.08	366.66	-356.12	293.74	40°07'53.108"N	104°51'13.165"W	1.09	
6343.00	10.050	145.510	6294.54	380.93	-370.07	302.70	40°07'52.970"N	104°51'13.050"W	1.44	
6433.00	9.830	159.840	6383.20	394.86	-383.76	309.80	40°07'52.835"N	104°51'12.959"W	2.75	
6523.00	11.620	160.000	6471.63	410.80	-399.49	315.55	40°07'52.679"N	104°51'12.885"W	1.99	
6613.00	11.730	161.840	6559.77	428.21	-416.70	321.50	40°07'52.509"N	104°51'12.808"W	0.43	
6702.00	11.900	168.480	6646.88	445.96	-434.29	326.15	40°07'52.335"N	104°51'12.748"W	1.54	
6792.00	11.310	173.400	6735.05	463.91	-452.15	329.02	40°07'52.159"N	104°51'12.711"W	1.28	
6882.00	16.640	173.480	6822.35	485.57	-473.73	331.50	40°07'51.946"N	104°51'12.679"W	5.92	
6927.00	21.290	177.900	6864.90	500.18	-488.30	332.53	40°07'51.802"N	104°51'12.666"W	10.81	
6972.00	23.270	182.520	6906.54	517.21	-505.35	332.44	40°07'51.633"N	104°51'12.667"W	5.87	
7017.00	26.170	181.290	6947.41	535.98	-524.16	331.82	40°07'51.447"N	104°51'12.675"W	6.54	
7062.00	31.230	176.800	6986.88	557.56	-545.74	332.25	40°07'51.234"N	104°51'12.670"W	12.22	
7107.00	35.210	176.190	7024.51	582.20	-570.34	333.77	40°07'50.991"N	104°51'12.650"W	8.88	
7151.00	38.520	176.610	7059.71	608.59	-596.69	335.42	40°07'50.730"N	104°51'12.629"W	7.54	
7196.00	42.220	177.310	7093.99	637.73	-625.79	336.96	40°07'50.443"N	104°51'12.609"W	8.28	
7241.00	44.650	178.220	7126.66	668.66	-656.70	338.16	40°07'50.137"N	104°51'12.593"W	5.58	
7286.00	47.900	178.280	7157.76	701.18	-689.20	339.15	40°07'49.816"N	104°51'12.581"W	7.22	
7331.00	52.710	179.220	7186.50	735.79	-723.81	339.90	40°07'49.474"N	104°51'12.571"W	10.81	
7376.00	57.960	180.190	7212.08	772.77	-760.80	340.08	40°07'49.109"N	104°51'12.569"W	11.80	
7421.00	62.590	180.730	7234.39	811.80	-799.87	339.76	40°07'48.723"N	104°51'12.573"W	10.34	
7466.00	65.560	180.690	7254.06	852.22	-840.33	339.26	40°07'48.323"N	104°51'12.579"W	6.60	
7510.00	68.960	181.200	7271.07	892.73	-880.90	338.59	40°07'47.922"N	104°51'12.588"W	7.80	
7555.00	73.030	181.870	7285.72	935.18	-923.43	337.44	40°07'47.502"N	104°51'12.603"W	9.15	
7601.00	77.690	180.120	7297.34	979.61	-967.91	336.68	40°07'47.062"N	104°51'12.613"W	10.78	
7645.00	81.370	179.760	7305.34	1022.84	-1011.17	336.72	40°07'46.634"N	104°51'12.612"W	8.40	
7682.00	84.690	180.090	7309.83	1059.54	-1047.89	336.77	40°07'46.272"N	104°51'12.611"W	9.02	
7721.00†	85.833	180.186	7313.05	1098.38	-1086.76	336.68	40°07'45.888"N	104°51'12.613"W	2.94	7" CASING POINT
7812.00	88.500	180.410	7317.55	1189.18	-1177.64	336.21	40°07'44.989"N	104°51'12.619"W	2.94	
7902.00	88.920	181.190	7319.57	1279.04	-1267.61	334.95	40°07'44.100"N	104°51'12.635"W	0.98	
7992.00	90.280	180.170	7320.20	1368.93	-1357.59	333.88	40°07'43.211"N	104°51'12.649"W	1.89	
8082.00	90.620	180.510	7319.49	1458.84	-1447.59	333.35	40°07'42.322"N	104°51'12.656"W	0.53	
8172.00	91.170	180.340	7318.09	1548.74	-1537.57	332.68	40°07'41.433"N	104°51'12.664"W	0.64	
8262.00	90.960	178.930	7316.42	1638.69	-1627.56	333.25	40°07'40.543"N	104°51'12.657"W	1.58	
8351.00	90.490	179.650	7315.29	1727.65	-1716.54	334.36	40°07'39.664"N	104°51'12.643"W	0.97	
8441.00	91.170	178.800	7313.99	1817.62	-1806.52	335.57	40°07'38.775"N	104°51'12.627"W	1.21	
8531.00	90.370	179.790	7312.78	1907.58	-1896.50	336.68	40°07'37.886"N	104°51'12.613"W	1.41	
8621.00	89.540	179.680	7312.85	1997.53	-1986.50	337.10	40°07'36.996"N	104°51'12.607"W	0.93	
8711.00	90.030	179.130	7313.19	2087.50	-2076.50	338.03	40°07'36.107"N	104°51'12.595"W	0.82	
8800.00	90.430	178.560	7312.83	2176.49	-2165.48	339.83	40°07'35.228"N	104°51'12.572"W	0.78	

REFERENCE WELLPATH IDENTIFICATION			
Operator	KERR-MCGEE OIL & GAS ONSHORE LP (LAMBERT STATE PLANE COORD)	Slot	SLOT#09 BARCLAY 37N-26HZ (577'FSL & 1709'FEL, SEC.14)
Area	COLORADO	Well	BARCLAY 37N-26HZ
Field	WELD COUNTY (KERR MCGEE)	Wellbore	BARCLAY 37N-26HZ AWB <102-17228>
Facility	SEC.14-T2N-R67W		

WELLPATH DATA (184 stations)										
MD [ft]	Inclination [°]	Azimuth [°]	TVD [ft]	Vert Sect [ft]	North [ft]	East [ft]	Latitude	Longitude	DLS [°/100ft]	Comments
8890.00	89.720	179.030	7312.71	2266.47	-2255.46	341.72	40°07'34.338"N	104°51'12.548"W	0.95	
8980.00	90.770	178.700	7312.33	2356.46	-2345.44	343.50	40°07'33.449"N	104°51'12.525"W	1.22	
9070.00	89.750	179.310	7311.92	2446.44	-2435.42	345.06	40°07'32.560"N	104°51'12.505"W	1.32	
9160.00	89.690	178.500	7312.36	2536.42	-2525.40	346.78	40°07'31.671"N	104°51'12.483"W	0.90	
9250.00	89.170	178.370	7313.25	2626.42	-2615.36	349.24	40°07'30.782"N	104°51'12.451"W	0.60	
9339.00	89.420	177.600	7314.35	2715.41	-2704.30	352.37	40°07'29.903"N	104°51'12.411"W	0.91	
9429.00	89.690	178.260	7315.05	2805.40	-2794.24	355.62	40°07'29.014"N	104°51'12.369"W	0.79	
9519.00	90.240	178.770	7315.10	2895.40	-2884.21	357.95	40°07'28.125"N	104°51'12.339"W	0.83	
9608.00	90.650	178.530	7314.41	2984.39	-2973.18	360.05	40°07'27.246"N	104°51'12.312"W	0.53	
9698.00	90.640	178.740	7313.40	3074.38	-3063.15	362.19	40°07'26.357"N	104°51'12.285"W	0.23	
9788.00	90.890	179.760	7312.20	3164.34	-3153.13	363.37	40°07'25.467"N	104°51'12.269"W	1.17	
9878.00	91.720	180.540	7310.15	3254.25	-3243.11	363.14	40°07'24.578"N	104°51'12.272"W	1.27	
9968.00	90.860	182.210	7308.12	3344.05	-3333.05	360.98	40°07'23.689"N	104°51'12.300"W	2.09	
10147.00	88.950	180.470	7308.42	3522.72	-3511.99	356.79	40°07'21.921"N	104°51'12.354"W	1.44	
10237.00	88.860	181.550	7310.14	3612.57	-3601.96	355.21	40°07'21.032"N	104°51'12.375"W	1.20	
10327.00	90.180	180.040	7310.89	3702.44	-3691.94	353.96	40°07'20.143"N	104°51'12.391"W	2.23	
10417.00	90.000	180.620	7310.75	3792.36	-3781.94	353.44	40°07'19.253"N	104°51'12.397"W	0.67	
10507.00	89.560	179.670	7311.09	3882.29	-3871.94	353.21	40°07'18.364"N	104°51'12.400"W	1.16	
10597.00	89.260	180.440	7312.02	3972.22	-3961.93	353.12	40°07'17.475"N	104°51'12.401"W	0.92	
10686.00	90.250	180.080	7312.40	4061.14	-4050.93	352.72	40°07'16.595"N	104°51'12.407"W	1.18	
10776.00	89.690	179.460	7312.45	4151.09	-4140.93	353.08	40°07'15.706"N	104°51'12.402"W	0.93	
10866.00	89.630	177.900	7312.98	4241.08	-4230.90	355.15	40°07'14.817"N	104°51'12.375"W	1.73	
10956.00	90.310	178.440	7313.03	4331.08	-4320.85	358.03	40°07'13.928"N	104°51'12.338"W	0.96	
11046.00	89.020	177.990	7313.56	4421.07	-4410.81	360.83	40°07'13.039"N	104°51'12.302"W	1.52	
11135.00	89.510	177.400	7314.70	4510.07	-4499.73	364.41	40°07'12.160"N	104°51'12.256"W	0.86	
11225.00	89.750	177.710	7315.28	4600.06	-4589.64	368.25	40°07'11.272"N	104°51'12.207"W	0.44	
11315.00	89.820	178.570	7315.62	4690.06	-4679.59	371.17	40°07'10.383"N	104°51'12.169"W	0.96	
11405.00	89.690	178.650	7316.00	4780.05	-4769.57	373.35	40°07'09.494"N	104°51'12.141"W	0.17	
11494.00	89.510	179.480	7316.62	4869.03	-4858.55	374.81	40°07'08.614"N	104°51'12.122"W	0.95	
11584.00	90.120	179.090	7316.91	4959.00	-4948.54	375.93	40°07'07.725"N	104°51'12.108"W	0.80	
11674.00	90.340	181.070	7316.55	5048.93	-5038.54	375.80	40°07'06.836"N	104°51'12.110"W	2.21	
11764.00	89.170	181.120	7316.94	5138.79	-5128.52	374.08	40°07'05.946"N	104°51'12.132"W	1.30	
11854.00	89.780	180.680	7317.76	5228.66	-5218.50	372.67	40°07'05.057"N	104°51'12.150"W	0.84	
11944.00	88.890	180.370	7318.81	5318.56	-5308.49	371.85	40°07'04.168"N	104°51'12.161"W	1.05	
12034.00	89.080	180.400	7320.40	5408.46	-5398.48	371.24	40°07'03.279"N	104°51'12.168"W	0.21	
12123.00	89.320	180.720	7321.64	5497.36	-5487.46	370.37	40°07'02.399"N	104°51'12.180"W	0.45	
12213.00	89.630	180.340	7322.47	5587.26	-5577.45	369.54	40°07'01.510"N	104°51'12.190"W	0.54	
12303.00	89.260	180.190	7323.34	5677.18	-5667.45	369.12	40°07'00.621"N	104°51'12.196"W	0.44	
12392.00	89.690	180.100	7324.15	5766.10	-5756.44	368.90	40°06'59.741"N	104°51'12.199"W	0.49	
12482.00	90.670	181.080	7323.87	5856.00	-5846.44	367.97	40°06'58.852"N	104°51'12.211"W	1.54	
12572.00	89.230	180.320	7323.95	5945.89	-5936.43	366.87	40°06'57.963"N	104°51'12.225"W	1.81	
12662.00	90.300	180.400	7324.32	6035.81	-6026.42	366.31	40°06'57.073"N	104°51'12.232"W	1.19	
12752.00	89.410	180.110	7324.55	6125.73	-6116.42	365.91	40°06'56.184"N	104°51'12.237"W	1.04	
12842.00	90.430	180.330	7324.67	6215.65	-6206.42	365.56	40°06'55.294"N	104°51'12.242"W	1.16	
12931.00	89.530	179.500	7324.70	6304.60	-6295.42	365.69	40°06'54.415"N	104°51'12.240"W	1.38	

REFERENCE WELLPATH IDENTIFICATION			
Operator	KERR-MCGEE OIL & GAS ONSHORE LP (LAMBERT STATE PLANE COORD)	Slot	SLOT#09 BARCLAY 37N-26HZ (577'FSL & 1709'FEL, SEC.14)
Area	COLORADO	Well	BARCLAY 37N-26HZ
Field	WELD COUNTY (KERR MCGEE)	Wellbore	BARCLAY 37N-26HZ AWB <102-17228>
Facility	SEC.14-T2N-R67W		

WELLPATH DATA (184 stations)										
MD [ft]	Inclination [°]	Azimuth [°]	TVD [ft]	Vert Sect [ft]	North [ft]	East [ft]	Latitude	Longitude	DLS [°/100ft]	Comments
13021.00	90.030	179.160	7325.05	6394.57	-6385.41	366.74	40°06'53.526"N	104°51'12.227"W	0.67	
13111.00	90.150	179.280	7324.91	6484.54	-6475.40	367.97	40°06'52.636"N	104°51'12.211"W	0.19	
13201.00	90.670	179.700	7324.26	6574.51	-6565.40	368.77	40°06'51.747"N	104°51'12.201"W	0.74	
13291.00	90.240	179.800	7323.55	6664.46	-6655.39	369.16	40°06'50.858"N	104°51'12.195"W	0.49	
13381.00	89.590	179.500	7323.68	6754.41	-6745.39	369.71	40°06'49.968"N	104°51'12.188"W	0.80	
13470.00	89.500	178.820	7324.39	6843.39	-6834.38	371.02	40°06'49.089"N	104°51'12.172"W	0.77	
13560.00	89.630	178.950	7325.07	6933.37	-6924.36	372.77	40°06'48.200"N	104°51'12.149"W	0.20	
13650.00	89.480	178.260	7325.77	7023.36	-7014.33	374.96	40°06'47.311"N	104°51'12.121"W	0.78	
13740.00	89.260	178.310	7326.76	7113.35	-7104.28	377.65	40°06'46.422"N	104°51'12.086"W	0.25	
13829.00	90.030	178.330	7327.31	7202.35	-7193.24	380.26	40°06'45.543"N	104°51'12.053"W	0.87	
13919.00	90.620	177.950	7326.80	7292.35	-7283.19	383.18	40°06'44.654"N	104°51'12.015"W	0.78	
14009.00	89.850	179.030	7326.43	7382.34	-7373.16	385.56	40°06'43.765"N	104°51'11.985"W	1.47	
14099.00	90.340	180.480	7326.28	7472.29	-7463.15	385.94	40°06'42.875"N	104°51'11.980"W	1.70	
14189.00	89.690	181.290	7326.26	7562.16	-7553.14	384.55	40°06'41.986"N	104°51'11.998"W	1.15	
14278.00	89.940	181.890	7326.55	7650.98	-7642.11	382.08	40°06'41.107"N	104°51'12.029"W	0.73	
14368.00	90.460	182.230	7326.23	7740.74	-7732.05	378.85	40°06'40.218"N	104°51'12.071"W	0.69	
14458.00	88.890	181.150	7326.74	7830.54	-7822.00	376.19	40°06'39.329"N	104°51'12.105"W	2.12	
14548.00	89.200	181.290	7328.24	7920.37	-7911.97	374.28	40°06'38.440"N	104°51'12.130"W	0.38	
14637.00	89.510	180.990	7329.25	8009.23	-8000.95	372.51	40°06'37.561"N	104°51'12.153"W	0.48	
14727.00	89.600	181.700	7329.95	8099.06	-8090.92	370.39	40°06'36.672"N	104°51'12.180"W	0.80	
14817.00	90.250	181.430	7330.06	8188.87	-8180.88	367.93	40°06'35.783"N	104°51'12.212"W	0.78	
14907.00	90.520	181.540	7329.46	8278.70	-8270.85	365.60	40°06'34.894"N	104°51'12.242"W	0.32	
14997.00	90.240	181.310	7328.86	8368.52	-8360.82	363.36	40°06'34.004"N	104°51'12.270"W	0.40	
15086.00	88.980	180.420	7329.47	8457.40	-8449.81	362.02	40°06'33.125"N	104°51'12.288"W	1.73	
15176.00	89.590	180.960	7330.59	8547.28	-8539.79	360.94	40°06'32.236"N	104°51'12.302"W	0.91	
15266.00	89.560	181.210	7331.26	8637.14	-8629.77	359.23	40°06'31.347"N	104°51'12.324"W	0.28	
15356.00	89.160	180.910	7332.26	8727.00	-8719.75	357.57	40°06'30.457"N	104°51'12.345"W	0.56	
15445.00	87.660	179.460	7334.73	8815.89	-8808.71	357.28	40°06'29.578"N	104°51'12.349"W	2.34	
15539.00	88.580	179.650	7337.82	8909.80	-8902.66	358.01	40°06'28.650"N	104°51'12.339"W	1.00	
15629.00	90.360	179.810	7338.65	8999.75	-8992.65	358.43	40°06'27.761"N	104°51'12.334"W	1.99	
15719.00	91.320	179.220	7337.33	9089.70	-9082.64	359.20	40°06'26.871"N	104°51'12.324"W	1.25	
15808.00	91.010	179.750	7335.52	9178.65	-9171.61	360.00	40°06'25.992"N	104°51'12.314"W	0.69	
15898.00	91.230	180.510	7333.76	9268.56	-9261.59	359.79	40°06'25.103"N	104°51'12.317"W	0.88	
15988.00	91.200	179.800	7331.85	9358.47	-9351.57	359.55	40°06'24.214"N	104°51'12.320"W	0.79	
16078.00	91.040	179.060	7330.09	9448.42	-9441.55	360.44	40°06'23.325"N	104°51'12.308"W	0.84	
16168.00	90.950	180.020	7328.53	9538.37	-9531.53	361.17	40°06'22.435"N	104°51'12.299"W	1.07	
16257.00	89.840	179.530	7327.92	9627.32	-9620.53	361.51	40°06'21.556"N	104°51'12.294"W	1.36	
16347.00	90.400	179.140	7327.73	9717.29	-9710.52	362.56	40°06'20.666"N	104°51'12.281"W	0.76	
16437.00	90.730	178.870	7326.84	9807.27	-9800.50	364.12	40°06'19.777"N	104°51'12.261"W	0.47	
16527.00	90.240	178.130	7326.08	9897.26	-9890.47	366.48	40°06'18.888"N	104°51'12.231"W	0.99	
16617.00	90.700	178.120	7325.34	9987.25	-9980.42	369.42	40°06'17.999"N	104°51'12.193"W	0.51	
16706.00	90.120	177.300	7324.70	10076.25	-10069.34	372.98	40°06'17.121"N	104°51'12.147"W	1.13	
16796.00	90.580	178.090	7324.15	10166.24	-10159.27	376.60	40°06'16.232"N	104°51'12.100"W	1.02	
16886.00	91.530	177.980	7322.50	10256.23	-10249.20	379.68	40°06'15.343"N	104°51'12.061"W	1.06	
16976.00	90.580	178.820	7320.84	10346.21	-10339.15	382.20	40°06'14.454"N	104°51'12.028"W	1.41	

REFERENCE WELLPATH IDENTIFICATION			
Operator	KERR-MCGEE OIL & GAS ONSHORE LP (LAMBERT STATE PLANE COORD)	Slot	SLOT#09 BARCLAY 37N-26HZ (577'FSL & 1709'FEL, SEC.14)
Area	COLORADO	Well	BARCLAY 37N-26HZ
Field	WELD COUNTY (KERR MCGEE)	Wellbore	BARCLAY 37N-26HZ AWB <102-17228>
Facility	SEC.14-T2N-R67W		

WELLPATH DATA (184 stations)											
MD [ft]	Inclination [°]	Azimuth [°]	TVD [ft]	Vert Sect [ft]	North [ft]	East [ft]	Latitude	Longitude	DLS ["/100ft]	Comments	
17066.00	90.890	178.460	7319.69	10436.19	-10429.11	384.33	40°06'13.565"N	104°51'12.001"W	0.53		
17156.00	91.290	178.350	7317.97	10526.17	-10519.06	386.84	40°06'12.676"N	104°51'11.969"W	0.46		
17174.00	91.410	178.440	7317.55	10544.17	-10537.05	387.34	40°06'12.499"N	104°51'11.962"W	0.83	LAST BHI MWD+IFR SURVEY	
17228.00	91.410	178.440	7316.22	10598.15	-10591.01	388.81	40°06'11.965"N	104°51'11.943"W	0.00	PROJECTION TO BIT	

HOLE & CASING SECTIONS - Ref Wellbore: BARCLAY 37N-26HZ AWB <102-17228> Ref Wellpath: BARCLAY 37N-26HZ AWP										
String/Diameter	Start MD [ft]	End MD [ft]	Interval [ft]	Start TVD [ft]	End TVD [ft]	Start N/S [ft]	Start E/W [ft]	End N/S [ft]	End E/W [ft]	
13.5in Open Hole	25.00	963.00	938.00	25.00	962.97	0.00	0.00	0.29	2.69	
9.625in Casing Surface	25.00	963.00	938.00	25.00	962.97	0.00	0.00	0.29	2.69	
8.75in Open Hole	963.00	7732.00	6769.00	962.97	7313.82	0.29	2.69	-1097.73	336.64	
7in Casing Intermediate	25.00	7721.00	7696.00	25.00	7313.05	0.00	0.00	-1086.76	336.68	
6.125in Open Hole	7732.00	17228.00	9496.00	7313.82	7316.22	-1097.73	336.64	-10591.01	388.81	

WELLPATH COMPOSITION - Ref Wellbore: BARCLAY 37N-26HZ AWB <102-17228> Ref Wellpath: BARCLAY 37N-26HZ AWP				
Start MD [ft]	End MD [ft]	Positional Uncertainty Model	Log Name/Comment	Wellbore
25.00	927.00	ISWASA MWD, Rev. 2 (Standard)	CATHEDRAL MWD SURVEYS <102-927>	BARCLAY 37N-26HZ AWB <102-17228>
927.00	7682.00	NaviTrak (MAGCORR,IFR)	BHI NAVITRAK MWD+IFR 8 3/4" <997-7682>	BARCLAY 37N-26HZ AWB <102-17228>
7682.00	17174.00	NaviTrak (MAGCORR,IFR)	BHI NAVITRAK MWD+IFR 6 1/8" <7812-17174>	BARCLAY 37N-26HZ AWB <102-17228>
17174.00	17228.00	Blind Drilling (std)	Projection to bit	BARCLAY 37N-26HZ AWB <102-17228>

REFERENCE WELLPATH IDENTIFICATION			
Operator	KERR-MCGEE OIL & GAS ONSHORE LP (LAMBERT STATE PLANE COORD)	Slot	SLOT#09 BARCLAY 37N-26HZ (577'FSL & 1709'FEL, SEC.14)
Area	COLORADO	Well	BARCLAY 37N-26HZ
Field	WELD COUNTY (KERR MCGEE)	Wellbore	BARCLAY 37N-26HZ AWB <102-17228>
Facility	SEC.14-T2N-R67W		

WELLPATH COMMENTS				
MD [ft]	Inclination [°]	Azimuth [°]	TVD [ft]	Comment
25.00	0.000	87.300	25.00	TIE ON
102.00	0.700	87.300	102.00	BEGIN CATHEDRAL MWD SURVEYS
927.00	0.400	290.700	926.97	TIE ONTO CATHEDRAL MWD SURVEYS
997.00	0.190	327.600	996.97	BEGIN BHI MWD+IFR SURVEYS
7721.00	85.833	180.186	7313.05	7" CASING POINT
17174.00	91.410	178.440	7317.55	LAST BHI MWD+IFR SURVEY
17228.00	91.410	178.440	7316.22	PROJECTION TO BIT