



# **Southwestern Energy**

**Moffat County, Colorado (NAD-83)**

**Diamond T Sheep**

**7-92 3-26H35**

**OH**

**Plan: Plan #4**

## **Standard Planning Report**

**26 January, 2015**

WELL DETAILS: 7-92 3-26H35

Rig Name:		Original Well Elev			RKB=22' @ 6701.00usft (Original Well Elev)	
		Ground Level:		6679.00		
+N/-S	+E/-W	Northing	Easting	Latitude	Longitude	
0.00	0.00	1445010.38	2390448.69	40.534261	-107.693181	

SECTION DETAILS

Sec	MD	Inc	Azi	TVD	+N/-S	+E/-W	Dleg	TFace	VSec	Target
1	0.00	0.00	0.00	0.00	0.00	0.00	0.00	0.00	0.00	
2	8042.40	0.00	0.00	8042.40	0.00	0.00	0.00	0.00	0.00	
3	8542.70	45.00	254.31	8492.82	-50.47	-179.64	9.00	254.31	68.89	
4	9477.69	90.00	180.00	8888.00	-716.29	-560.15	8.45	-78.77	770.69	
5	14114.69	90.00	180.00	8888.00	-5353.29	-560.15	0.00	0.00	5382.51	DIAMOND T SHEEP 7-92 3-26H35: BHL

DESIGN TARGET DETAILS

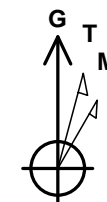
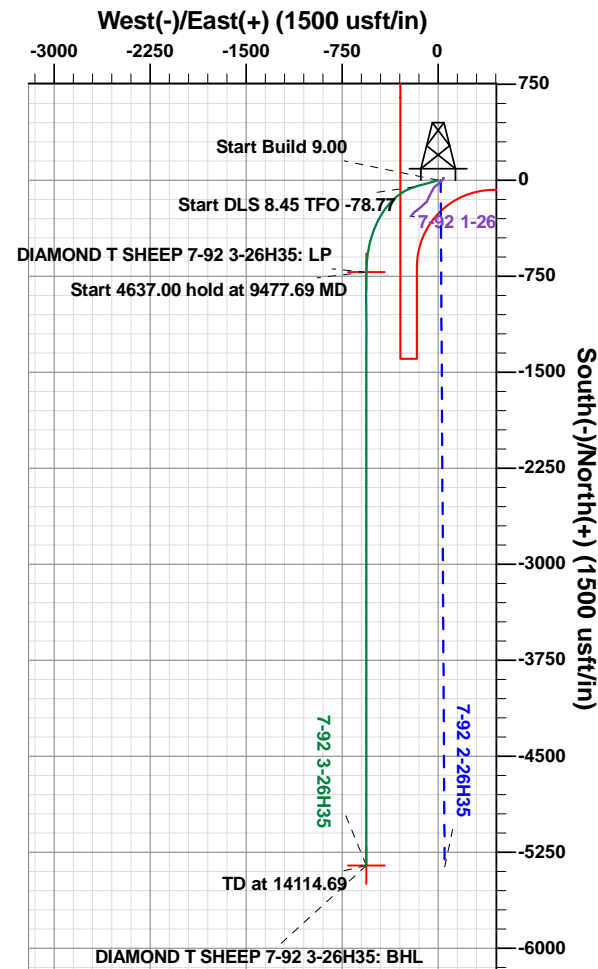
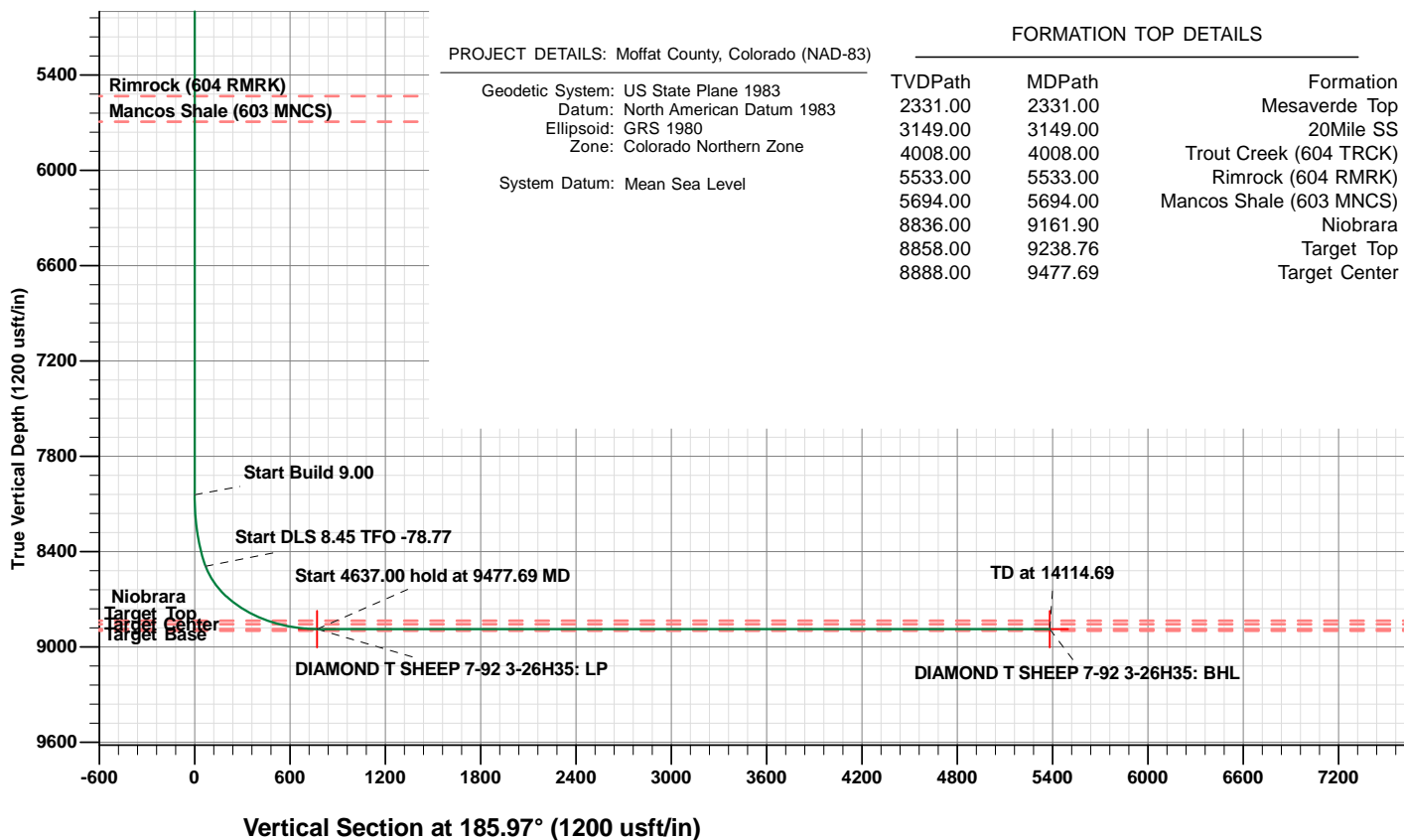
Name	TVD	+N/-S	+E/-W	Northing	Easting	Latitude	Longitude	Shape
DIAMOND T SHEEP 7-92 3-26H35: BHL	8888.00	-5353.29	-560.15	1439676.79	2389888.87	40.519592	-107.694787	Point
DIAMOND T SHEEP 7-92 3-26H35: LP	8888.00	-716.29	-560.15	1444313.79	2389888.87	40.532312	-107.695131	Point

PROJECT DETAILS: Moffat County, Colorado (NAD-83)

Geodetic System: US State Plane 1983  
Datum: North American Datum 1983  
Ellipsoid: GRS 1980  
Zone: Colorado Northern Zone  
System Datum: Mean Sea Level

FORMATION TOP DETAILS

TVDPPath	MDPath	Formation
2331.00	2331.00	Mesaverde Top
3149.00	3149.00	20Mile SS
4008.00	4008.00	Trout Creek (604 TRCK)
5533.00	5533.00	Rimrock (604 RMRK)
5694.00	5694.00	Mancos Shale (603 MNCS)
8836.00	9161.90	Niobrara
8858.00	9238.76	Target Top
8888.00	9477.69	Target Center



Azimuths to Grid North  
True North: 1.42°  
Magnetic North: 11.31°  
Magnetic Field  
Strength: 52489.1snT  
Dip Angle: 66.54°  
Date: 12/2/2014  
Model: IGRF2010

<b>Database:</b>	Single User DB Primary	<b>Local Co-ordinate Reference:</b>	Well 7-92 3-26H35
<b>Company:</b>	Southwestern Energy	<b>TVD Reference:</b>	RKB=22' @ 6701.00usft (Original Well Elev)
<b>Project:</b>	Moffat County, Colorado (NAD-83)	<b>MD Reference:</b>	RKB=22' @ 6701.00usft (Original Well Elev)
<b>Site:</b>	Diamond T Sheep	<b>North Reference:</b>	Grid
<b>Well:</b>	7-92 3-26H35	<b>Survey Calculation Method:</b>	Minimum Curvature
<b>Wellbore:</b>	OH		
<b>Design:</b>	Plan #4		

<b>Project</b>	Moffat County, Colorado (NAD-83)		
<b>Map System:</b>	US State Plane 1983	<b>System Datum:</b>	Mean Sea Level
<b>Geo Datum:</b>	North American Datum 1983		
<b>Map Zone:</b>	Colorado Northern Zone		

Site						Diamond T Sheep											
Site Position:						Northing:			1,445,017.42 usft			Latitude:			40.534283		
From:			Lat/Long			Easting:			2,390,487.91 usft			Longitude:			-107.693039		
Position Uncertainty:			0.00 usft			Slot Radius:			13-3/16 "			Grid Convergence:			-1.42		

Well	7-92 3-26H35					
Well Position	+N-S	12.67 usft	Northing:	1,445,030.08 usft	Latitude:	40.534315
	+E-W	-38.89 usft	Easting:	2,390,449.02 usft	Longitude:	-107.693180
Position Uncertainty		0.00 usft	Wellhead Elevation:		Ground Level:	6,679.00 usft

<b>Wellbore</b>	OH				
-----------------	----	--	--	--	--

Magnetics	Model Name	Sample Date	Declination (°)	Dip Angle (°)	Field Strength (nT)
	IGRF2010	12/2/2014	9.89	66.54	52,489

<b>Design</b>	Plan #4				
---------------	---------	--	--	--	--

<b>Audit Notes:</b>					
<b>Version:</b>	<b>Phase:</b>	PLAN	<b>Tie On Depth:</b>	0.00	

Vertical Section:	Depth From (TVD) (usft)	+N/-S (usft)	+E/-W (usft)	Direction (°)
	0.00	0.00	0.00	185.97

Plan Sections										
Measured Depth (usft)	Inclination (°)	Azimuth (°)	Vertical Depth (usft)	+N/-S (usft)	+E/-W (usft)	Dogleg Rate (°/100usft)	Build Rate (°/100usft)	Turn Rate (°/100usft)	TFO (°)	Target
0.00	0.00	0.00	0.00	0.00	0.00	0.00	0.00	0.00	0.00	
8,042.40	0.00	0.00	8,042.40	0.00	0.00	0.00	0.00	0.00	0.00	
8,542.70	45.00	254.31	8,492.82	-50.47	-179.64	9.00	9.00	0.00	254.31	
9,477.69	90.00	180.00	8,888.00	-716.29	-560.15	8.45	4.81	-7.95	-78.77	
14,114.69	90.00	180.00	8,888.00	-5,353.29	-560.15	0.00	0.00	0.00	0.00	DIAMOND T SHEE

<b>Database:</b>	Single User DB Primary	<b>Local Co-ordinate Reference:</b>	Well 7-92 3-26H35
<b>Company:</b>	Southwestern Energy	<b>TVD Reference:</b>	RKB=22' @ 6701.00usft (Original Well Elev)
<b>Project:</b>	Moffat County, Colorado (NAD-83)	<b>MD Reference:</b>	RKB=22' @ 6701.00usft (Original Well Elev)
<b>Site:</b>	Diamond T Sheep	<b>North Reference:</b>	Grid
<b>Well:</b>	7-92 3-26H35	<b>Survey Calculation Method:</b>	Minimum Curvature
<b>Wellbore:</b>	OH		
<b>Design:</b>	Plan #4		

Planned Survey									
Measured Depth (usft)	Inclination (°)	Azimuth (°)	Vertical Depth (usft)	+N/-S (usft)	+E/-W (usft)	Vertical Section (usft)	Dogleg Rate (°/100usft)	Build Rate (°/100usft)	Turn Rate (°/100usft)
0.00	0.00	0.00	0.00	0.00	0.00	0.00	0.00	0.00	0.00
100.00	0.00	0.00	100.00	0.00	0.00	0.00	0.00	0.00	0.00
200.00	0.00	0.00	200.00	0.00	0.00	0.00	0.00	0.00	0.00
300.00	0.00	0.00	300.00	0.00	0.00	0.00	0.00	0.00	0.00
400.00	0.00	0.00	400.00	0.00	0.00	0.00	0.00	0.00	0.00
500.00	0.00	0.00	500.00	0.00	0.00	0.00	0.00	0.00	0.00
600.00	0.00	0.00	600.00	0.00	0.00	0.00	0.00	0.00	0.00
700.00	0.00	0.00	700.00	0.00	0.00	0.00	0.00	0.00	0.00
800.00	0.00	0.00	800.00	0.00	0.00	0.00	0.00	0.00	0.00
900.00	0.00	0.00	900.00	0.00	0.00	0.00	0.00	0.00	0.00
1,000.00	0.00	0.00	1,000.00	0.00	0.00	0.00	0.00	0.00	0.00
1,100.00	0.00	0.00	1,100.00	0.00	0.00	0.00	0.00	0.00	0.00
1,200.00	0.00	0.00	1,200.00	0.00	0.00	0.00	0.00	0.00	0.00
1,300.00	0.00	0.00	1,300.00	0.00	0.00	0.00	0.00	0.00	0.00
1,400.00	0.00	0.00	1,400.00	0.00	0.00	0.00	0.00	0.00	0.00
1,500.00	0.00	0.00	1,500.00	0.00	0.00	0.00	0.00	0.00	0.00
1,600.00	0.00	0.00	1,600.00	0.00	0.00	0.00	0.00	0.00	0.00
1,700.00	0.00	0.00	1,700.00	0.00	0.00	0.00	0.00	0.00	0.00
1,800.00	0.00	0.00	1,800.00	0.00	0.00	0.00	0.00	0.00	0.00
1,900.00	0.00	0.00	1,900.00	0.00	0.00	0.00	0.00	0.00	0.00
2,000.00	0.00	0.00	2,000.00	0.00	0.00	0.00	0.00	0.00	0.00
2,100.00	0.00	0.00	2,100.00	0.00	0.00	0.00	0.00	0.00	0.00
2,200.00	0.00	0.00	2,200.00	0.00	0.00	0.00	0.00	0.00	0.00
2,300.00	0.00	0.00	2,300.00	0.00	0.00	0.00	0.00	0.00	0.00
2,400.00	0.00	0.00	2,400.00	0.00	0.00	0.00	0.00	0.00	0.00
2,500.00	0.00	0.00	2,500.00	0.00	0.00	0.00	0.00	0.00	0.00
2,600.00	0.00	0.00	2,600.00	0.00	0.00	0.00	0.00	0.00	0.00
2,700.00	0.00	0.00	2,700.00	0.00	0.00	0.00	0.00	0.00	0.00
2,800.00	0.00	0.00	2,800.00	0.00	0.00	0.00	0.00	0.00	0.00
2,900.00	0.00	0.00	2,900.00	0.00	0.00	0.00	0.00	0.00	0.00
3,000.00	0.00	0.00	3,000.00	0.00	0.00	0.00	0.00	0.00	0.00
3,100.00	0.00	0.00	3,100.00	0.00	0.00	0.00	0.00	0.00	0.00
3,200.00	0.00	0.00	3,200.00	0.00	0.00	0.00	0.00	0.00	0.00
3,300.00	0.00	0.00	3,300.00	0.00	0.00	0.00	0.00	0.00	0.00
3,400.00	0.00	0.00	3,400.00	0.00	0.00	0.00	0.00	0.00	0.00
3,500.00	0.00	0.00	3,500.00	0.00	0.00	0.00	0.00	0.00	0.00
3,600.00	0.00	0.00	3,600.00	0.00	0.00	0.00	0.00	0.00	0.00
3,700.00	0.00	0.00	3,700.00	0.00	0.00	0.00	0.00	0.00	0.00
3,800.00	0.00	0.00	3,800.00	0.00	0.00	0.00	0.00	0.00	0.00
3,900.00	0.00	0.00	3,900.00	0.00	0.00	0.00	0.00	0.00	0.00
4,000.00	0.00	0.00	4,000.00	0.00	0.00	0.00	0.00	0.00	0.00
4,100.00	0.00	0.00	4,100.00	0.00	0.00	0.00	0.00	0.00	0.00
4,200.00	0.00	0.00	4,200.00	0.00	0.00	0.00	0.00	0.00	0.00
4,300.00	0.00	0.00	4,300.00	0.00	0.00	0.00	0.00	0.00	0.00
4,400.00	0.00	0.00	4,400.00	0.00	0.00	0.00	0.00	0.00	0.00
4,500.00	0.00	0.00	4,500.00	0.00	0.00	0.00	0.00	0.00	0.00
4,600.00	0.00	0.00	4,600.00	0.00	0.00	0.00	0.00	0.00	0.00
4,700.00	0.00	0.00	4,700.00	0.00	0.00	0.00	0.00	0.00	0.00
4,800.00	0.00	0.00	4,800.00	0.00	0.00	0.00	0.00	0.00	0.00
4,900.00	0.00	0.00	4,900.00	0.00	0.00	0.00	0.00	0.00	0.00
5,000.00	0.00	0.00	5,000.00	0.00	0.00	0.00	0.00	0.00	0.00
5,100.00	0.00	0.00	5,100.00	0.00	0.00	0.00	0.00	0.00	0.00
5,200.00	0.00	0.00	5,200.00	0.00	0.00	0.00	0.00	0.00	0.00
5,300.00	0.00	0.00	5,300.00	0.00	0.00	0.00	0.00	0.00	0.00

<b>Database:</b>	Single User DB Primary	<b>Local Co-ordinate Reference:</b>	Well 7-92 3-26H35
<b>Company:</b>	Southwestern Energy	<b>TVD Reference:</b>	RKB=22' @ 6701.00usft (Original Well Elev)
<b>Project:</b>	Moffat County, Colorado (NAD-83)	<b>MD Reference:</b>	RKB=22' @ 6701.00usft (Original Well Elev)
<b>Site:</b>	Diamond T Sheep	<b>North Reference:</b>	Grid
<b>Well:</b>	7-92 3-26H35	<b>Survey Calculation Method:</b>	Minimum Curvature
<b>Wellbore:</b>	OH		
<b>Design:</b>	Plan #4		

Planned Survey									
Measured Depth (usft)	Inclination (°)	Azimuth (°)	Vertical Depth (usft)	+N/-S (usft)	+E/-W (usft)	Vertical Section (usft)	Dogleg Rate (°/100usft)	Build Rate (°/100usft)	Turn Rate (°/100usft)
5,400.00	0.00	0.00	5,400.00	0.00	0.00	0.00	0.00	0.00	0.00
5,500.00	0.00	0.00	5,500.00	0.00	0.00	0.00	0.00	0.00	0.00
5,600.00	0.00	0.00	5,600.00	0.00	0.00	0.00	0.00	0.00	0.00
5,700.00	0.00	0.00	5,700.00	0.00	0.00	0.00	0.00	0.00	0.00
5,800.00	0.00	0.00	5,800.00	0.00	0.00	0.00	0.00	0.00	0.00
5,900.00	0.00	0.00	5,900.00	0.00	0.00	0.00	0.00	0.00	0.00
6,000.00	0.00	0.00	6,000.00	0.00	0.00	0.00	0.00	0.00	0.00
6,100.00	0.00	0.00	6,100.00	0.00	0.00	0.00	0.00	0.00	0.00
6,200.00	0.00	0.00	6,200.00	0.00	0.00	0.00	0.00	0.00	0.00
6,300.00	0.00	0.00	6,300.00	0.00	0.00	0.00	0.00	0.00	0.00
6,400.00	0.00	0.00	6,400.00	0.00	0.00	0.00	0.00	0.00	0.00
6,500.00	0.00	0.00	6,500.00	0.00	0.00	0.00	0.00	0.00	0.00
6,600.00	0.00	0.00	6,600.00	0.00	0.00	0.00	0.00	0.00	0.00
6,700.00	0.00	0.00	6,700.00	0.00	0.00	0.00	0.00	0.00	0.00
6,800.00	0.00	0.00	6,800.00	0.00	0.00	0.00	0.00	0.00	0.00
6,900.00	0.00	0.00	6,900.00	0.00	0.00	0.00	0.00	0.00	0.00
7,000.00	0.00	0.00	7,000.00	0.00	0.00	0.00	0.00	0.00	0.00
7,100.00	0.00	0.00	7,100.00	0.00	0.00	0.00	0.00	0.00	0.00
7,200.00	0.00	0.00	7,200.00	0.00	0.00	0.00	0.00	0.00	0.00
7,300.00	0.00	0.00	7,300.00	0.00	0.00	0.00	0.00	0.00	0.00
7,400.00	0.00	0.00	7,400.00	0.00	0.00	0.00	0.00	0.00	0.00
7,500.00	0.00	0.00	7,500.00	0.00	0.00	0.00	0.00	0.00	0.00
7,600.00	0.00	0.00	7,600.00	0.00	0.00	0.00	0.00	0.00	0.00
7,700.00	0.00	0.00	7,700.00	0.00	0.00	0.00	0.00	0.00	0.00
7,800.00	0.00	0.00	7,800.00	0.00	0.00	0.00	0.00	0.00	0.00
7,900.00	0.00	0.00	7,900.00	0.00	0.00	0.00	0.00	0.00	0.00
8,000.00	0.00	0.00	8,000.00	0.00	0.00	0.00	0.00	0.00	0.00
8,042.40	0.00	0.00	8,042.40	0.00	0.00	0.00	0.00	0.00	0.00
8,050.00	0.68	254.31	8,050.00	-0.01	-0.04	0.02	9.00	9.00	0.00
8,100.00	5.18	254.31	8,099.92	-0.70	-2.51	0.96	9.00	9.00	0.00
8,150.00	9.68	254.31	8,149.49	-2.45	-8.73	3.35	9.00	9.00	0.00
8,200.00	14.18	254.31	8,198.40	-5.25	-18.68	7.16	9.00	9.00	0.00
8,250.00	18.67	254.31	8,246.34	-9.07	-32.28	12.38	9.00	9.00	0.00
8,300.00	23.17	254.31	8,293.03	-13.90	-49.47	18.97	9.00	9.00	0.00
8,350.00	27.67	254.31	8,338.18	-19.70	-70.13	26.89	9.00	9.00	0.00
8,400.00	32.17	254.31	8,381.51	-26.45	-94.13	36.10	9.00	9.00	0.00
8,450.00	36.67	254.31	8,422.74	-34.09	-121.33	46.53	9.00	9.00	0.00
8,500.00	41.16	254.31	8,461.64	-42.58	-151.56	58.12	9.00	9.00	0.00
8,542.70	45.00	254.31	8,492.82	-50.47	-179.64	68.89	9.00	9.00	0.00
8,550.00	45.13	253.45	8,497.97	-51.90	-184.60	70.83	8.45	1.69	-11.69
8,600.00	46.14	247.72	8,532.95	-63.79	-218.28	86.16	8.45	2.02	-11.47
8,650.00	47.43	242.20	8,567.20	-79.22	-251.26	104.93	8.45	2.58	-11.04
8,700.00	48.97	236.92	8,600.54	-98.11	-283.36	127.06	8.45	3.08	-10.55
8,750.00	50.74	231.90	8,632.79	-120.35	-314.41	152.42	8.45	3.54	-10.03
8,800.00	52.72	227.15	8,663.77	-145.83	-344.24	180.87	8.45	3.95	-9.51
8,850.00	54.87	222.65	8,693.31	-174.41	-372.69	212.25	8.45	4.31	-9.00
8,900.00	57.18	218.38	8,721.26	-205.94	-399.60	246.40	8.45	4.63	-8.52
8,950.00	59.63	214.35	8,747.46	-240.23	-424.83	283.14	8.45	4.90	-8.08
9,000.00	62.20	210.51	8,771.77	-277.11	-448.23	322.25	8.45	5.14	-7.67
9,050.00	64.87	206.85	8,794.05	-316.37	-469.69	363.54	8.45	5.34	-7.31
9,100.00	67.62	203.35	8,814.19	-357.81	-489.09	406.77	8.45	5.51	-7.00
9,150.00	70.45	199.99	8,832.08	-401.19	-506.31	451.71	8.45	5.65	-6.72
9,200.00	73.34	196.75	8,847.62	-446.29	-521.28	498.11	8.45	5.77	-6.49
9,250.00	76.27	193.60	8,860.73	-492.85	-533.90	545.73	8.45	5.87	-6.29

<b>Database:</b>	Single User DB Primary	<b>Local Co-ordinate Reference:</b>	Well 7-92 3-26H35
<b>Company:</b>	Southwestern Energy	<b>TVD Reference:</b>	RKB=22' @ 6701.00usft (Original Well Elev)
<b>Project:</b>	Moffat County, Colorado (NAD-83)	<b>MD Reference:</b>	RKB=22' @ 6701.00usft (Original Well Elev)
<b>Site:</b>	Diamond T Sheep	<b>North Reference:</b>	Grid
<b>Well:</b>	7-92 3-26H35	<b>Survey Calculation Method:</b>	Minimum Curvature
<b>Wellbore:</b>	OH		
<b>Design:</b>	Plan #4		

Planned Survey									
Measured Depth (usft)	Inclination (°)	Azimuth (°)	Vertical Depth (usft)	+N/-S (usft)	+E/-W (usft)	Vertical Section (usft)	Dogleg Rate (°/100usft)	Build Rate (°/100usft)	Turn Rate (°/100usft)
9,300.00	79.25	190.53	8,871.33	-540.62	-544.10	594.31	8.45	5.95	-6.14
9,350.00	82.25	187.53	8,879.37	-589.35	-551.84	643.58	8.45	6.01	-6.02
9,400.00	85.28	184.56	8,884.80	-638.77	-557.07	693.27	8.45	6.05	-5.93
9,450.00	88.32	181.62	8,887.59	-688.60	-559.76	743.12	8.45	6.07	-5.88
9,477.69	90.00	180.00	8,888.00	-716.29	-560.15	770.69	8.45	6.08	-5.86
9,500.00	90.00	180.00	8,888.00	-738.60	-560.15	792.88	0.00	0.00	0.00
9,600.00	90.00	180.00	8,888.00	-838.60	-560.15	892.34	0.00	0.00	0.00
9,700.00	90.00	180.00	8,888.00	-938.60	-560.15	991.79	0.00	0.00	0.00
9,800.00	90.00	180.00	8,888.00	-1,038.60	-560.15	1,091.25	0.00	0.00	0.00
9,900.00	90.00	180.00	8,888.00	-1,138.60	-560.15	1,190.71	0.00	0.00	0.00
10,000.00	90.00	180.00	8,888.00	-1,238.60	-560.15	1,290.16	0.00	0.00	0.00
10,100.00	90.00	180.00	8,888.00	-1,338.60	-560.15	1,389.62	0.00	0.00	0.00
10,200.00	90.00	180.00	8,888.00	-1,438.60	-560.15	1,489.08	0.00	0.00	0.00
10,300.00	90.00	180.00	8,888.00	-1,538.60	-560.15	1,588.54	0.00	0.00	0.00
10,400.00	90.00	180.00	8,888.00	-1,638.60	-560.15	1,687.99	0.00	0.00	0.00
10,500.00	90.00	180.00	8,888.00	-1,738.60	-560.15	1,787.45	0.00	0.00	0.00
10,600.00	90.00	180.00	8,888.00	-1,838.60	-560.15	1,886.91	0.00	0.00	0.00
10,700.00	90.00	180.00	8,888.00	-1,938.60	-560.15	1,986.36	0.00	0.00	0.00
10,800.00	90.00	180.00	8,888.00	-2,038.60	-560.15	2,085.82	0.00	0.00	0.00
10,900.00	90.00	180.00	8,888.00	-2,138.60	-560.15	2,185.28	0.00	0.00	0.00
11,000.00	90.00	180.00	8,888.00	-2,238.60	-560.15	2,284.73	0.00	0.00	0.00
11,100.00	90.00	180.00	8,888.00	-2,338.60	-560.15	2,384.19	0.00	0.00	0.00
11,200.00	90.00	180.00	8,888.00	-2,438.60	-560.15	2,483.65	0.00	0.00	0.00
11,300.00	90.00	180.00	8,888.00	-2,538.60	-560.15	2,583.11	0.00	0.00	0.00
11,400.00	90.00	180.00	8,888.00	-2,638.60	-560.15	2,682.56	0.00	0.00	0.00
11,500.00	90.00	180.00	8,888.00	-2,738.60	-560.15	2,782.02	0.00	0.00	0.00
11,600.00	90.00	180.00	8,888.00	-2,838.60	-560.15	2,881.48	0.00	0.00	0.00
11,700.00	90.00	180.00	8,888.00	-2,938.60	-560.15	2,980.93	0.00	0.00	0.00
11,800.00	90.00	180.00	8,888.00	-3,038.60	-560.15	3,080.39	0.00	0.00	0.00
11,900.00	90.00	180.00	8,888.00	-3,138.60	-560.15	3,179.85	0.00	0.00	0.00
12,000.00	90.00	180.00	8,888.00	-3,238.60	-560.15	3,279.30	0.00	0.00	0.00
12,100.00	90.00	180.00	8,888.00	-3,338.60	-560.15	3,378.76	0.00	0.00	0.00
12,200.00	90.00	180.00	8,888.00	-3,438.60	-560.15	3,478.22	0.00	0.00	0.00
12,300.00	90.00	180.00	8,888.00	-3,538.60	-560.15	3,577.68	0.00	0.00	0.00
12,400.00	90.00	180.00	8,888.00	-3,638.60	-560.15	3,677.13	0.00	0.00	0.00
12,500.00	90.00	180.00	8,888.00	-3,738.60	-560.15	3,776.59	0.00	0.00	0.00
12,600.00	90.00	180.00	8,888.00	-3,838.60	-560.15	3,876.05	0.00	0.00	0.00
12,700.00	90.00	180.00	8,888.00	-3,938.60	-560.15	3,975.50	0.00	0.00	0.00
12,800.00	90.00	180.00	8,888.00	-4,038.60	-560.15	4,074.96	0.00	0.00	0.00
12,900.00	90.00	180.00	8,888.00	-4,138.60	-560.15	4,174.42	0.00	0.00	0.00
13,000.00	90.00	180.00	8,888.00	-4,238.60	-560.15	4,273.87	0.00	0.00	0.00
13,100.00	90.00	180.00	8,888.00	-4,338.60	-560.15	4,373.33	0.00	0.00	0.00
13,200.00	90.00	180.00	8,888.00	-4,438.60	-560.15	4,472.79	0.00	0.00	0.00
13,300.00	90.00	180.00	8,888.00	-4,538.60	-560.15	4,572.25	0.00	0.00	0.00
13,400.00	90.00	180.00	8,888.00	-4,638.60	-560.15	4,671.70	0.00	0.00	0.00
13,500.00	90.00	180.00	8,888.00	-4,738.60	-560.15	4,771.16	0.00	0.00	0.00
13,600.00	90.00	180.00	8,888.00	-4,838.60	-560.15	4,870.62	0.00	0.00	0.00
13,700.00	90.00	180.00	8,888.00	-4,938.60	-560.15	4,970.07	0.00	0.00	0.00
13,800.00	90.00	180.00	8,888.00	-5,038.60	-560.15	5,069.53	0.00	0.00	0.00
13,900.00	90.00	180.00	8,888.00	-5,138.60	-560.15	5,168.99	0.00	0.00	0.00
14,000.00	90.00	180.00	8,888.00	-5,238.60	-560.15	5,268.45	0.00	0.00	0.00
14,100.00	90.00	180.00	8,888.00	-5,338.60	-560.15	5,367.90	0.00	0.00	0.00
14,114.69	90.00	180.00	8,888.00	-5,353.29	-560.15	5,382.51	0.00	0.00	0.00

<b>Database:</b>	Single User DB Primary	<b>Local Co-ordinate Reference:</b>	Well 7-92 3-26H35
<b>Company:</b>	Southwestern Energy	<b>TVD Reference:</b>	RKB=22' @ 6701.00usft (Original Well Elev)
<b>Project:</b>	Moffat County, Colorado (NAD-83)	<b>MD Reference:</b>	RKB=22' @ 6701.00usft (Original Well Elev)
<b>Site:</b>	Diamond T Sheep	<b>North Reference:</b>	Grid
<b>Well:</b>	7-92 3-26H35	<b>Survey Calculation Method:</b>	Minimum Curvature
<b>Wellbore:</b>	OH		
<b>Design:</b>	Plan #4		

## Design Targets

Target Name - hit/miss target - Shape	Dip Angle (°)	Dip Dir. (°)	TVD (usft)	+N/-S (usft)	+E/-W (usft)	Northing (usft)	Easting (usft)	Latitude	Longitude
DIAMOND T SHEEP - plan hits target center - Point	0.00	360.00	8,888.00	-716.29	-560.15	1,444,313.79	2,389,888.87	40.532312	-107.695131
DIAMOND T SHEEP - plan hits target center - Point	0.00	0.00	8,888.00	-5,353.29	-560.15	1,439,676.79	2,389,888.87	40.519587	-107.694718

## Formations

Measured Depth (usft)	Vertical Depth (usft)	Name	Lithology	Dip (°)	Dip Direction (°)
2,331.00	2,331.00	Mesaverde Top			
3,149.00	3,149.00	20Mile SS			
4,008.00	4,008.00	Trout Creek (604 TRCK)			
5,533.00	5,533.00	Rimrock (604 RMRK)			
5,694.00	5,694.00	Mancos Shale (603 MNCS)			
9,161.90	8,836.00	Niobrara			
9,238.76	8,858.00	Target Top			
9,477.69	8,888.00	Target Center			