

DUAL INDUCTION  
SHORT GUARD  
CALIPER LOG

COMPANY AA PRODUCTION		WELL SOLDIER CANYON NO. 1	
FIELD SOLDIER CANYON UNIT		COUNTY RIO BLANCO STATE CO	
MELL SOLDIER CANYON NO. 14-26		FIELD SOLDIER CANYON UNIT	
COUNTY RIO BLANCO		API NO N/A	
LOCATION SE/4 OF SW/4 SURFACE		556 FSL AND 2471 FML SURF.	
SE/4 OF SE/4 BHL		1000 FSL AND 1200 FEL BHL	
TWP 4S		RGE 101M	
ELEV. 6931		ELEV. 6931	
LOG MEASURED FROM KB OR 18 FT. ABOVE PERM DATUM		D.F. 6948	
DRILLING MEASURED FROM KB		G.L. 6931	
DATE 10/27/93		RUN NO. ONE	
DEPTH-DRILLER 6540		DEPTH-LOGGER NOT LOGGED	
BTM. LOG INTER 6190		TOP LOG INTER SURF	
CASING DRILLER 8.625@525		BIT SIZE 524	
TYPE FLUID IN HOLE FRESH MUD		DENS. : VISC. 10.6 : 65	
PH : FLUID LOSS 9.0 : 3.4		SOURCE OF SAMPLE FLOWLINE	
RM @ MEAS. TEMP. 2.80 @56 F		RM @ MEAS. TEMP. 3.30 @38 F	
RM @ MEAS. TEMP. 6.90 @34 F		MEAS : MERS 1.02 @166 F	
RM @BHT 1.02 @166 F		TIME SINCE CIRC. 4.5 HOURS	
MAX. REC TEMP. 166 F@TD		EQUIP. : LOCATION 52546:VERNL	
RECORDED BY K. EVATT		B. LAIN	
MITTESSED BY			

FIELD PRINT

FOLD HERE

SERVICE TICKET NO. : 566511	API SERIAL NO. : N/A	PGM VERSION: 2.32
CHANGE IN MUD TYPE OR ADDITIONAL SAMPLES	RESISTIVITY SCALE CHANGES	
DATE: SAMPLE NO. / /	TYPE LOG DEPTH SCALE UP HOLE SCALE DOWN HOLE	
DEPTH-DRILLER		
TYPE FLUID		
IN HOLE		
DENS. : VISC		
PH : FLUID LOSS		
SOURCE OF SAMPLE	RESISTIVITY EQUIPMENT DATA	
RM @ MEAS TEMP	RUN NO TOOL TYPE & NOI PAD TYPE TOOL POS. OTHER	
RM @ MEAS TEMP	@ DIND 109600	FREE
RM @ MEAS TEMP	@ ONE	FREE
SOURCE: RMF:RMC	! DSTU BLUE	
RM @ BHT	1.02 @166 F	
RMF @ BHT	0.86 @166 F	
RMC @ BHT	1.64 @166 F	

EQUIPMENT DATA		DENSITY		NEUTRON	
GAMMA	ACOUSTIC	RUN NO.	SERIAL NO.	RUN NO.	SERIAL NO.
ONE	108642				
MODEL NO.	NGRT-A	MODEL NO.		MODEL NO.	
DIAMETER	3.625	NO. OF CENT.		DIAMETER	
DETECTOR MODEL NO.	M	SPACING		LOG TYPE	
TYPE	SCINT	SOURCE TYPE		SOURCE TYPE	
LENGTH	4"	LSA [Y/N]		SERIAL NO.	
DISTANCE TO SOURCE	N/A	FUDA [Y,N]		STRENGTH	

GENERAL		GAMMA		ACOUSTIC		DENSITY		NEUTRON	
RUN NO	DEPTH	SPEED	SCALE	RUN NO	SERIAL NO.	RUN NO	SERIAL NO.	RUN NO	SERIAL NO.
ONE	6192	FT/MIN	L	ONE	108642	ONE	108642	ONE	108642
	FROM TO		R		MODEL NO.		MODEL NO.		MODEL NO.
	SURF	B0+	150		DIAMETER		DIAMETER		DIAMETER
					LOG TYPE		LOG TYPE		LOG TYPE
					SOURCE TYPE		SOURCE TYPE		SOURCE TYPE
					SERIAL NO.		SERIAL NO.		SERIAL NO.
					STRENGTH		STRENGTH		STRENGTH

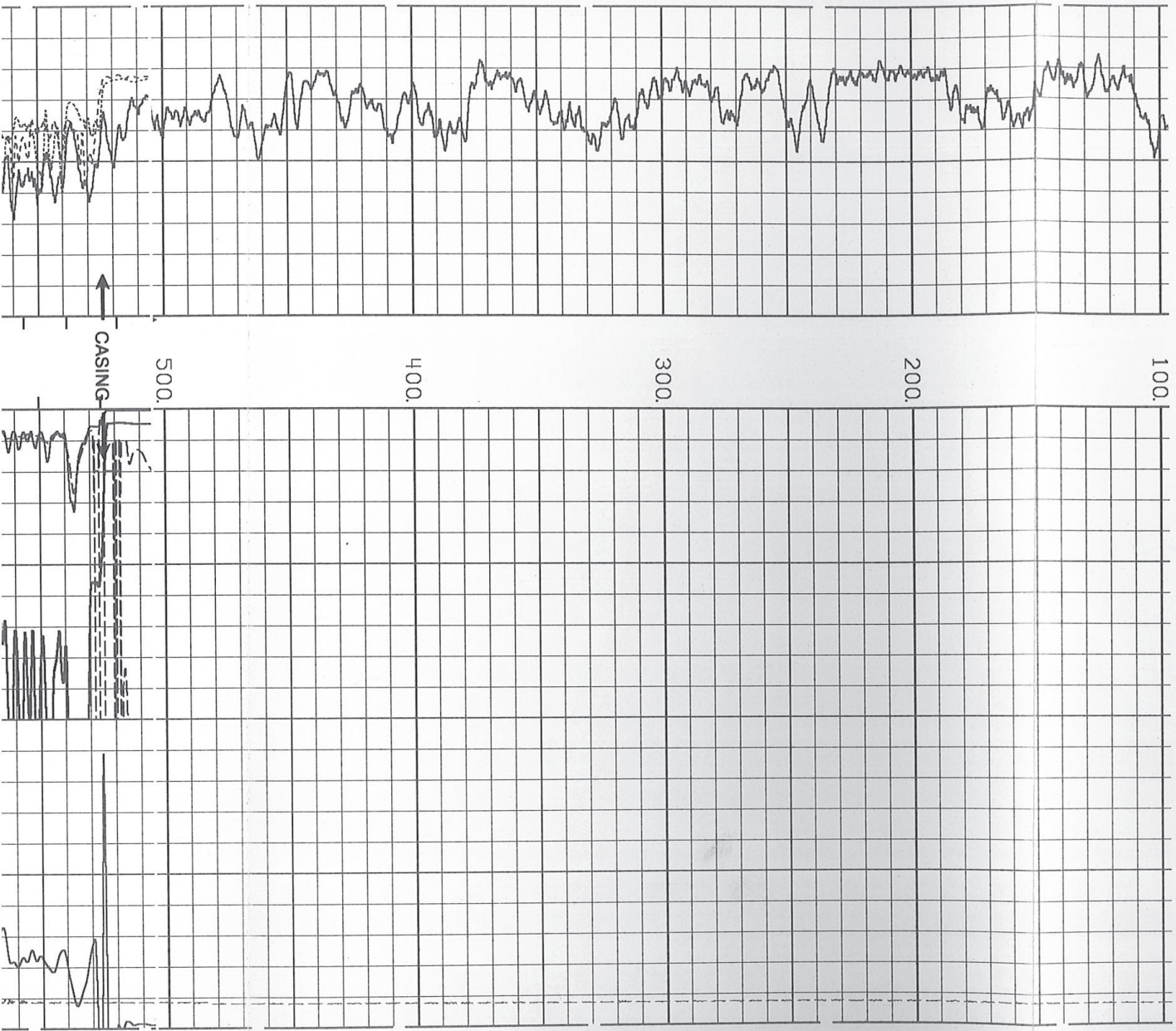
REMARKS: TD NOT LOGGED DUE TO HOLE CONDITIONS. PULLED TIGHT AT 4582' TO 4576', AND CLOSED CALIPERS. FISH AT BOTTOM OF WELL.  
 ANNULAR HOLE VOLUME BASED ON 5.5" CASING  
 THANK YOU FOR USING HALLIBURTON ENERGY SERVICES, VERNAL 801-789-3155  
 CREW: J. MELANCON, R. SHAW //RIG// ADCOR NO. 36

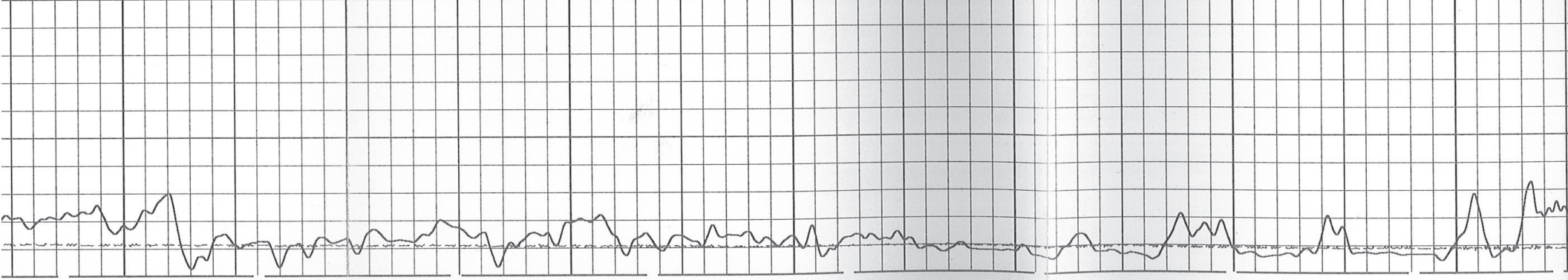
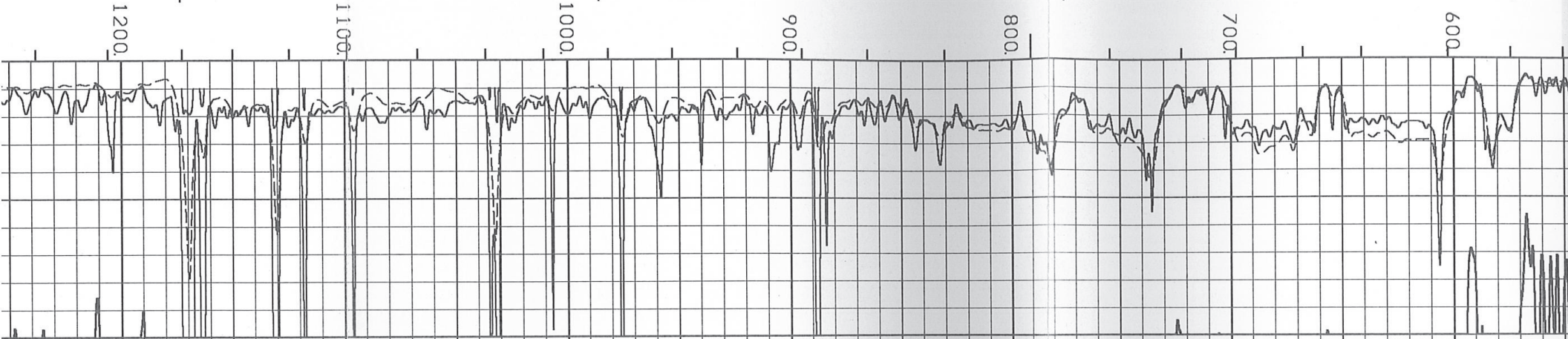
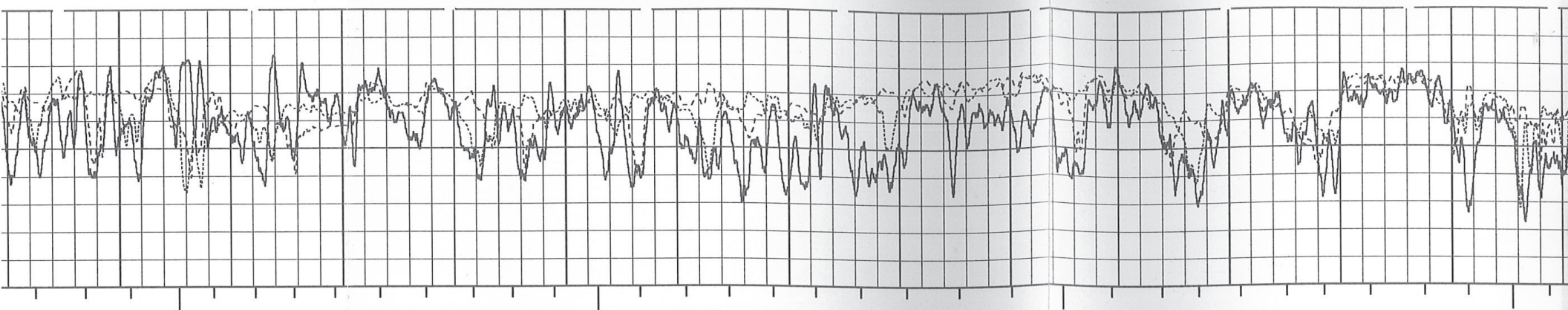
REMARKS: TD NOT LOGGED DUE TO HOLE CONDITIONS. PULLED TIGHT AT 4582' TO 4576',  
 AND CLOSED CALIPERS. FISH AT BOTTOM OF WELL.  
 ANNUAL HOLE VOLUME BASED ON 5.5" CASING  
 THANK YOU FOR USING HALLIBURTON ENERGY SERVICES, VERNAL 801-789-3155  
 CREW: J.MELANCON, R.SHAM //RIG// ADCOR NO. 36

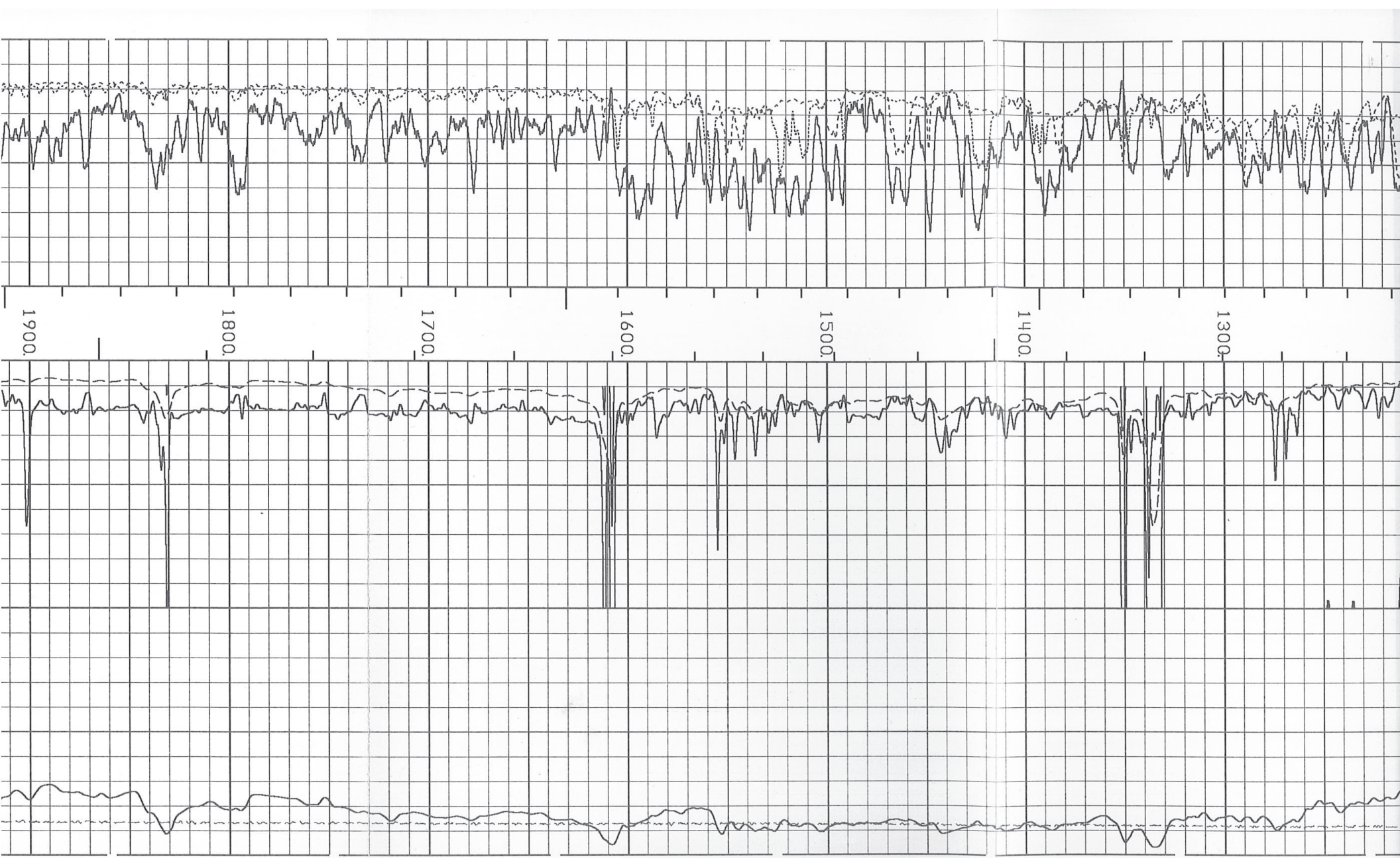
HALLIBURTON LOGGING SERVICES, INC. DOES NOT GUARANTEE THE ACCURACY OF ANY INTERPRETATION OF LOG DATA, CORRECTION OF LOG DATA TO PHYSICAL ROCK  
 PARAMETERS OR RECOMMENDATIONS WHICH MAY BE GIVEN BY HIS PERSONNEL OR WHICH APPEAR ON THE LOG OR IN ANY OTHER FORM. ANY USER OF SUCH DATA,  
 INTERPRETATIONS, CORRECTIONS, OR RECOMMENDATIONS AGREES THAT HIS IS NOT RESPONSIBLE EXCEPT WHERE DUE TO GROSS NEGLIGENCE OR WILLFUL MISCONDUCT,  
 FOR ANY LOSS, DAMAGES, OR EXPENSES RESULTING FROM THE USE THEREOF.

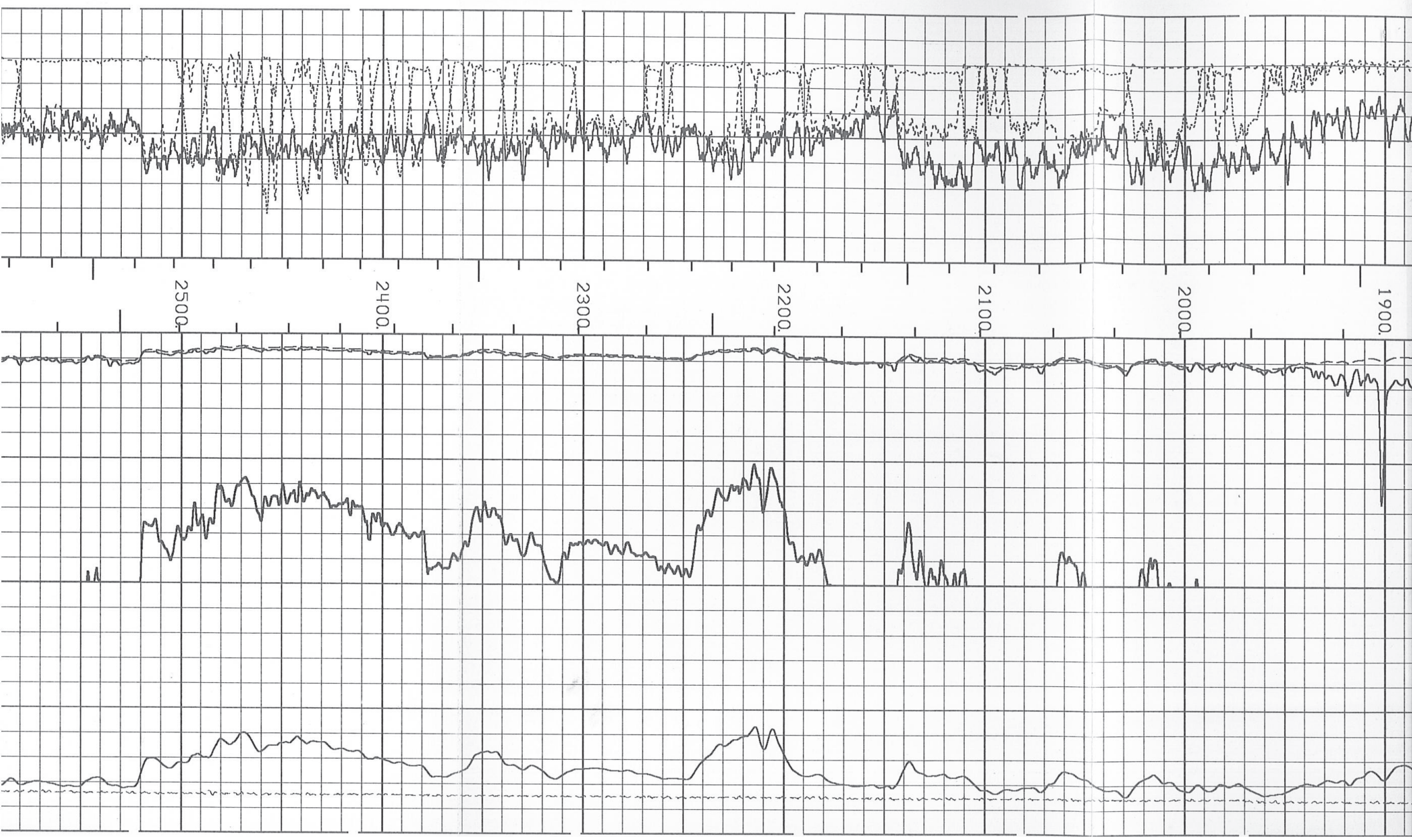
MAIN PASS: 2" = 100'

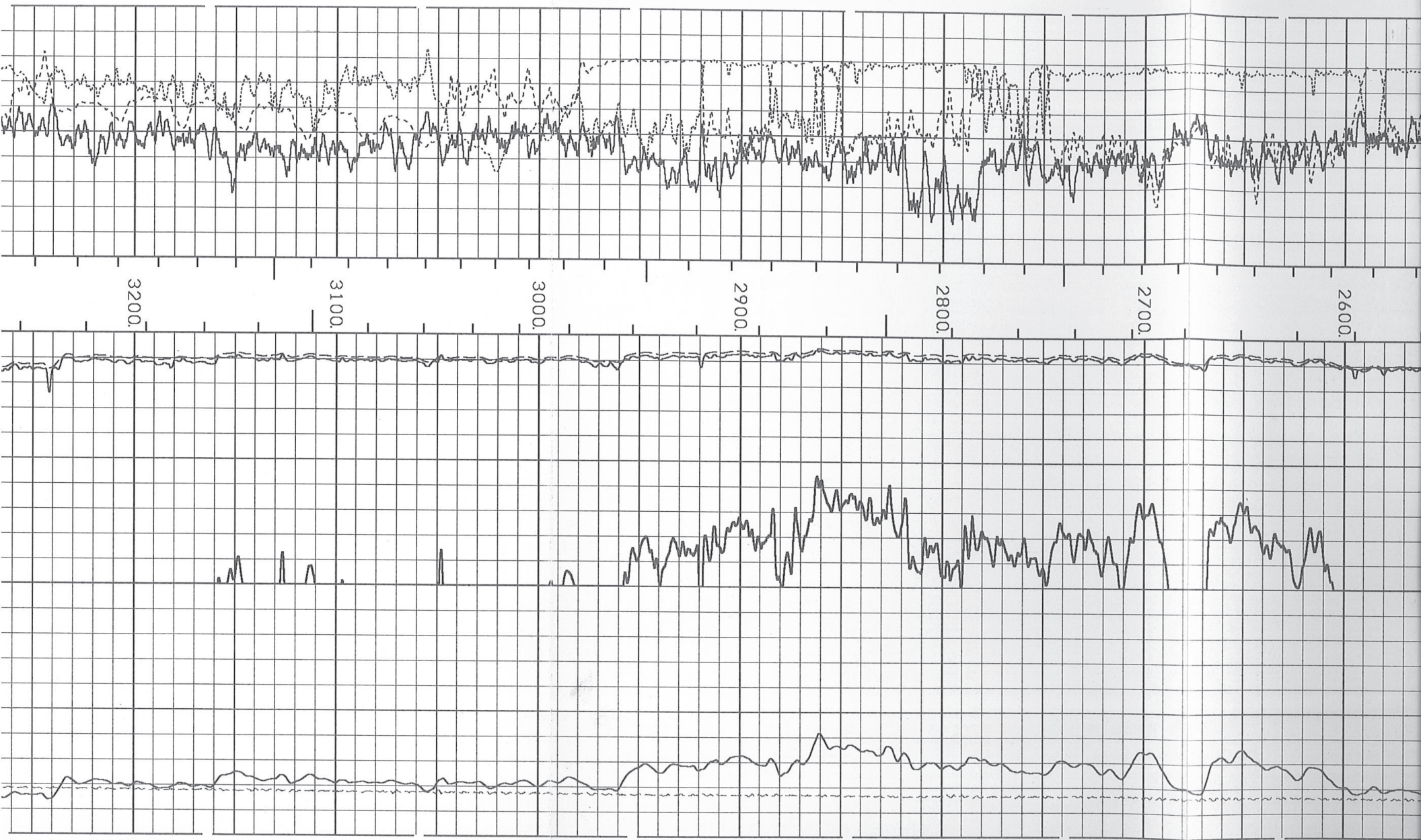
	GAMMA	AHV	SH GUARD RES	DEEP COND
0	GAMMA API 150	<AHV<	OHMM 100	MMHO 500
	CALLIP 1-3	BHV	AMP GUARD	TENSION
6	INCHES 16	>BHV>	OHMM 10	10000 POUNDS
	CALLIP 2-4		DEEP RES	
6	INCHES 16		OHMM 100	

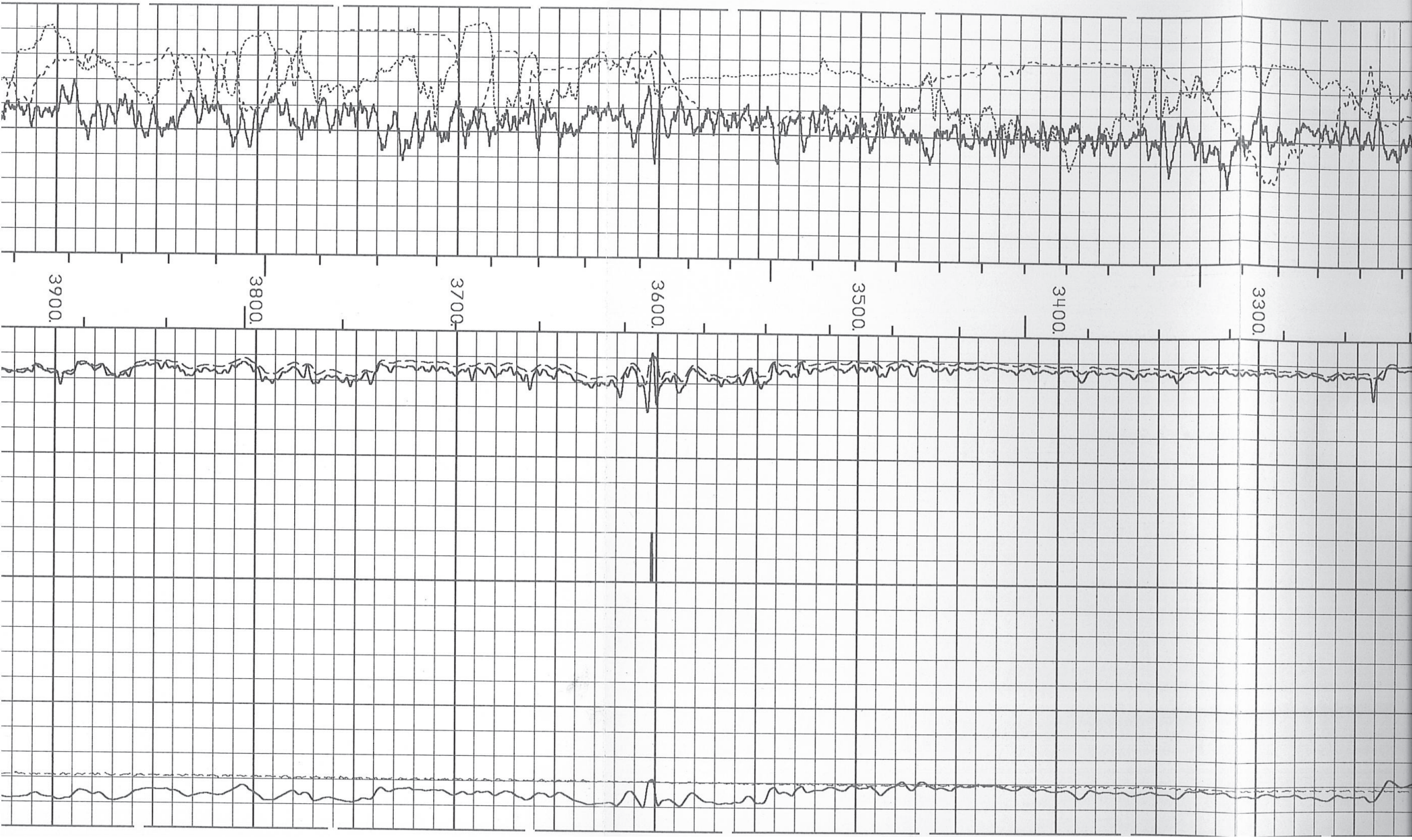


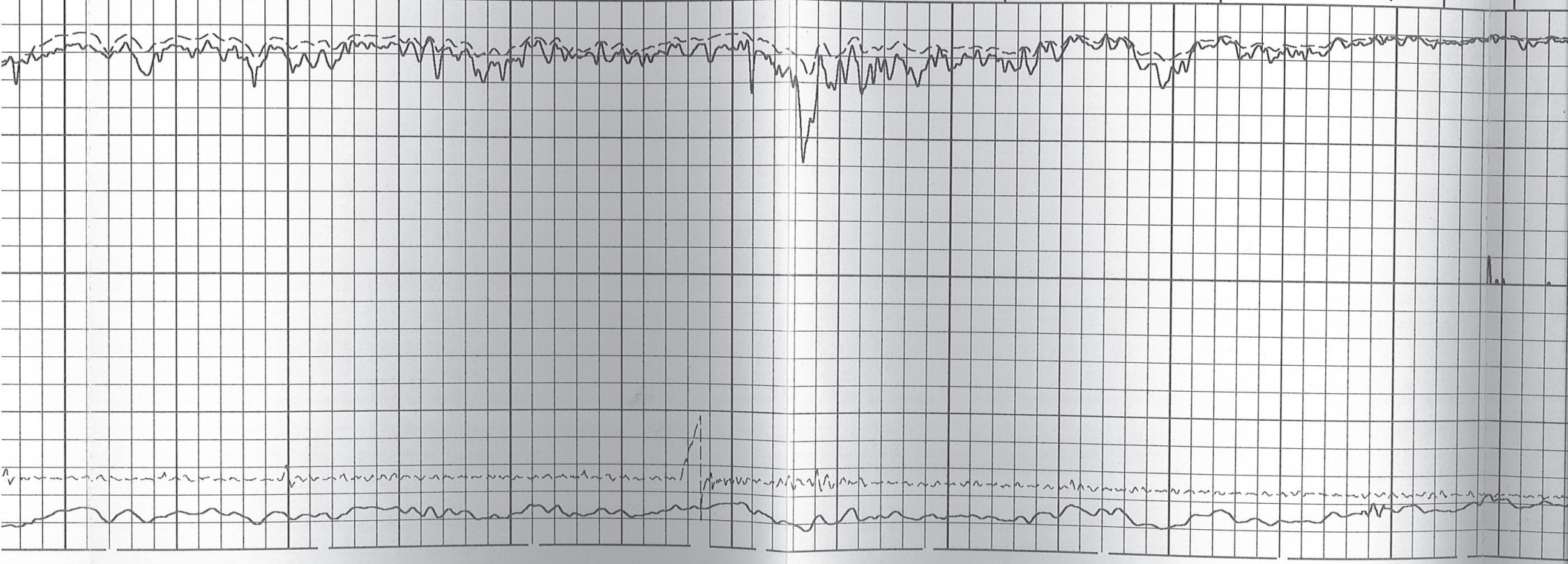
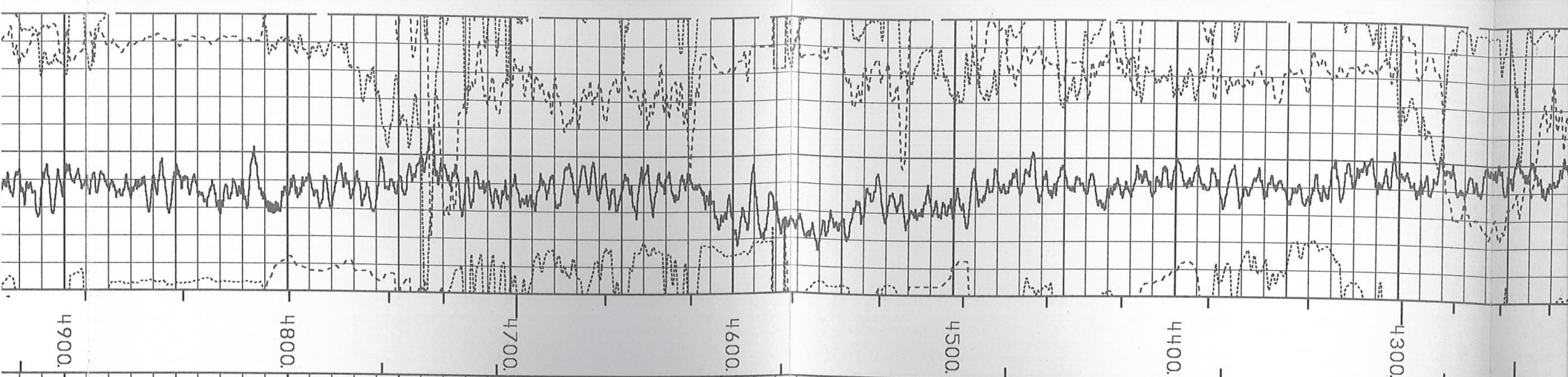


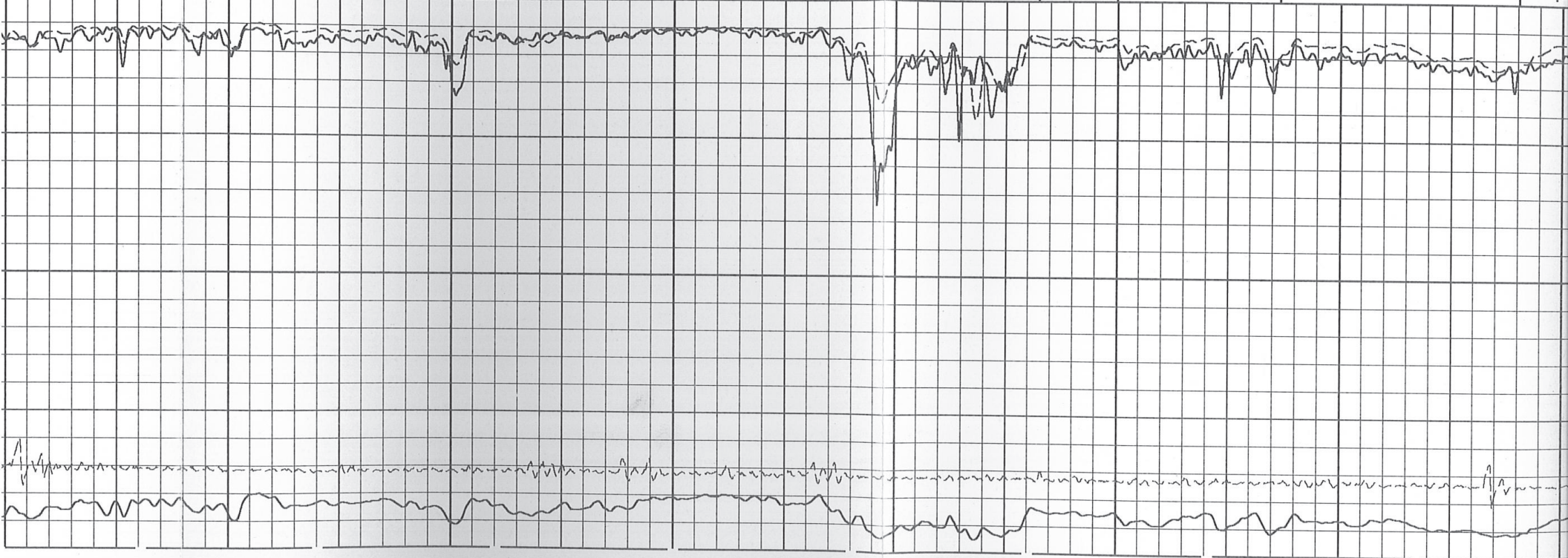
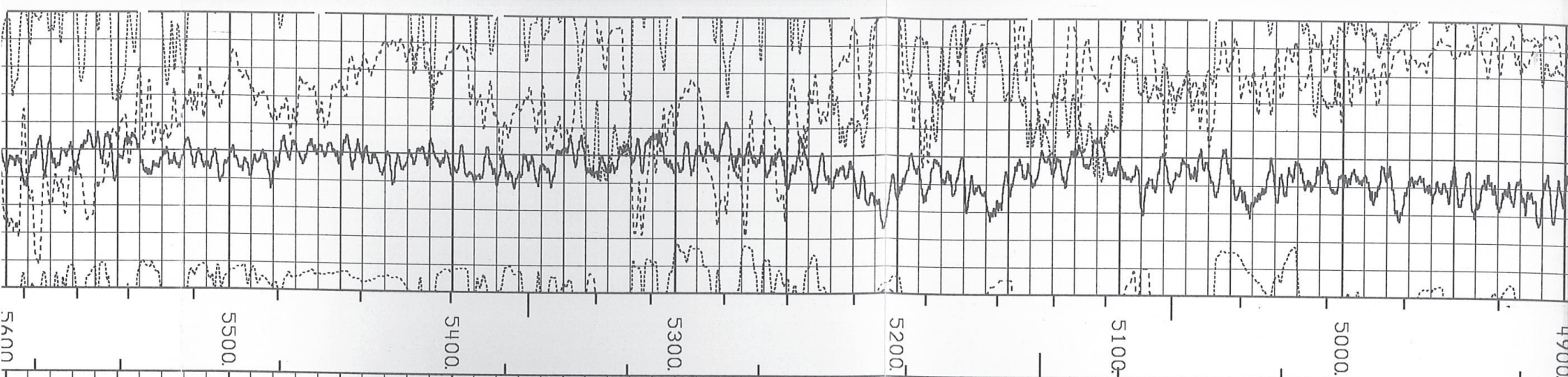


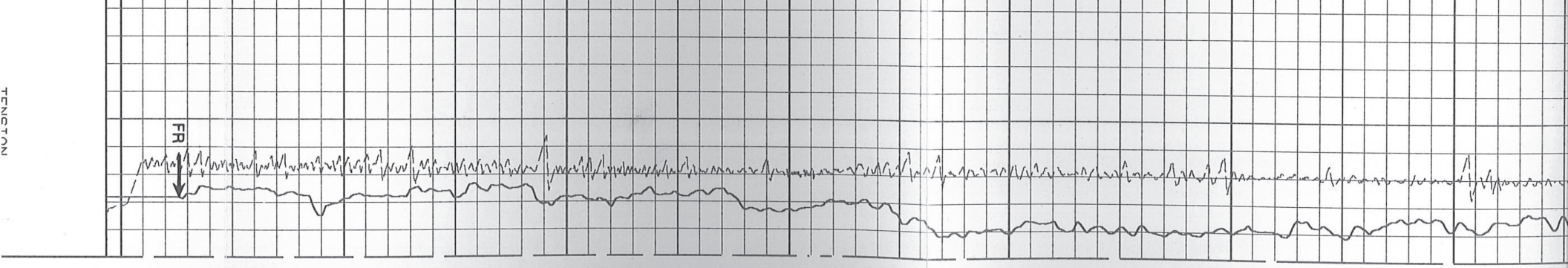
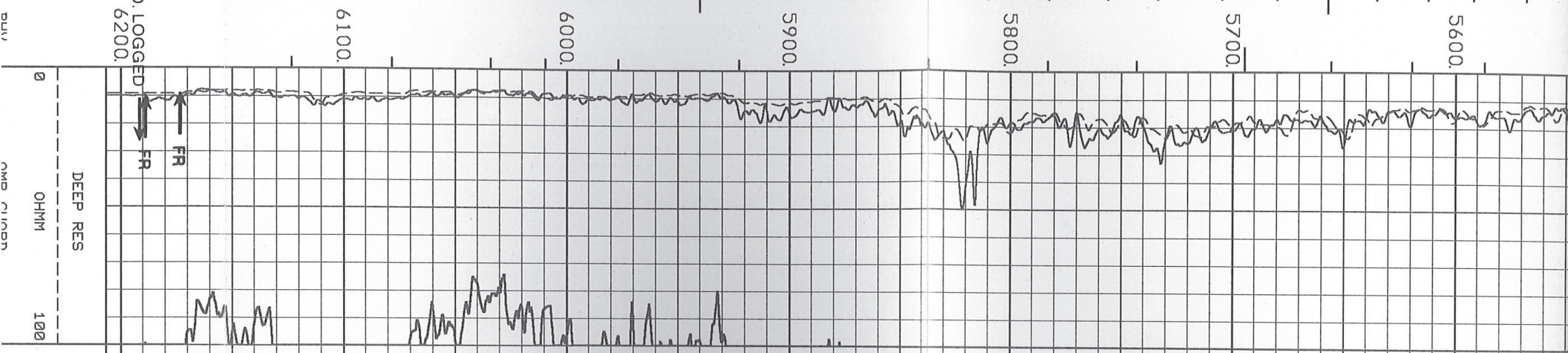
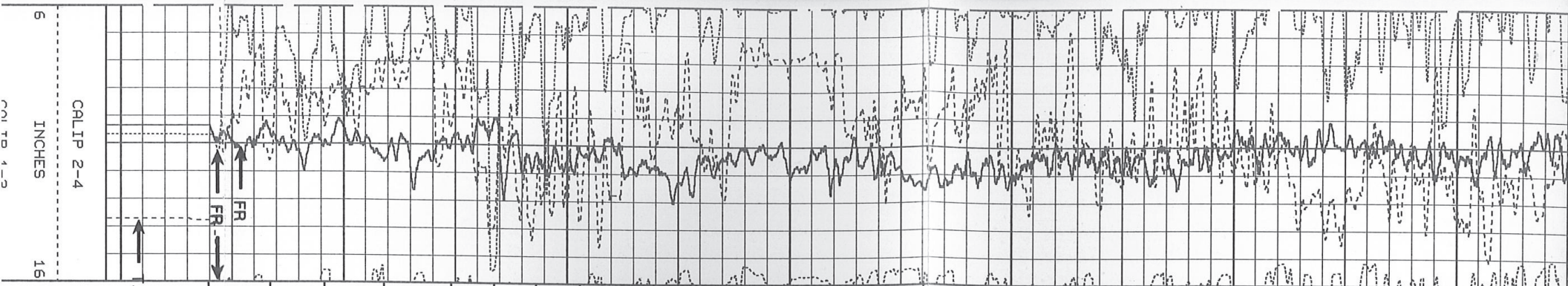










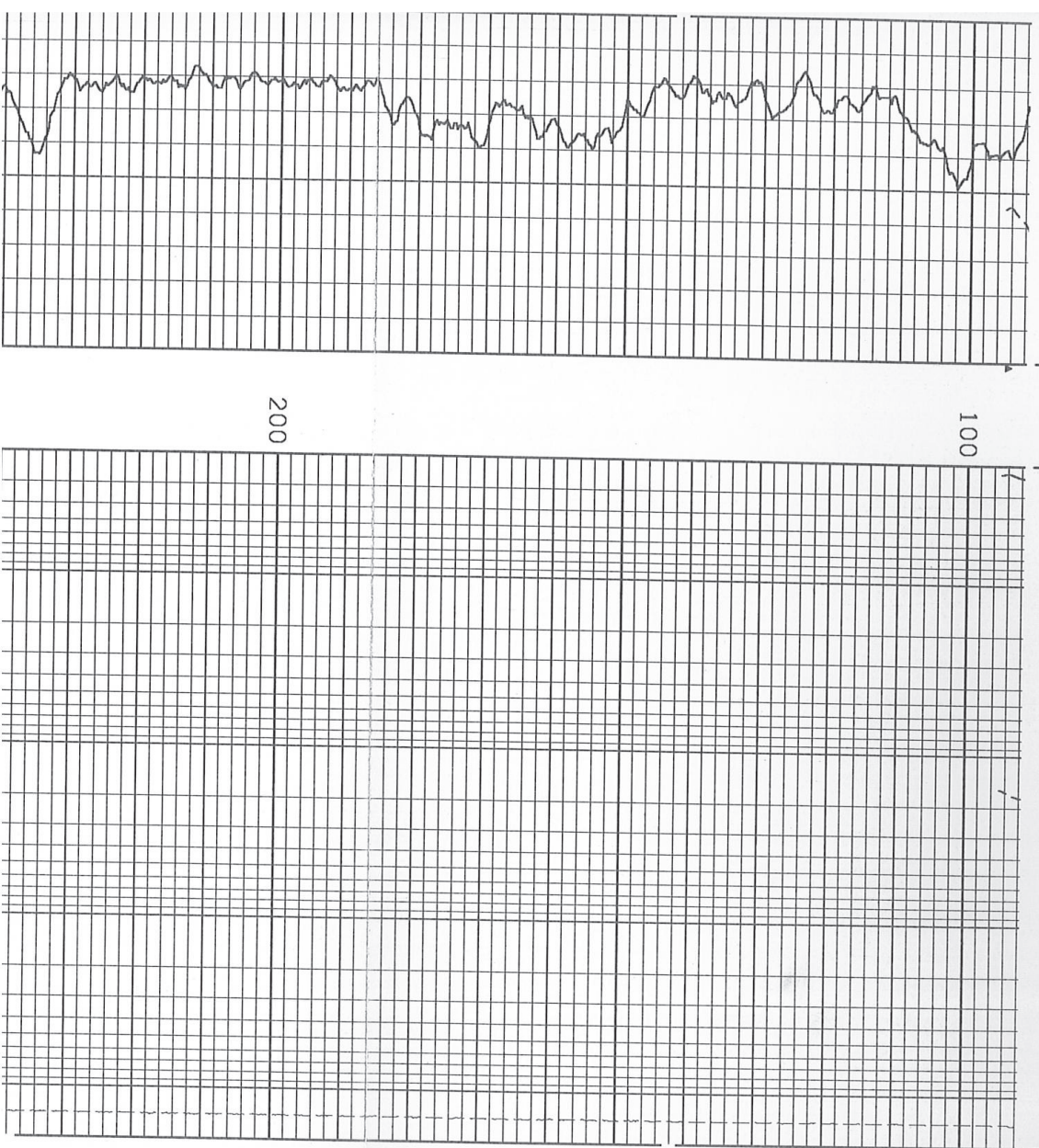


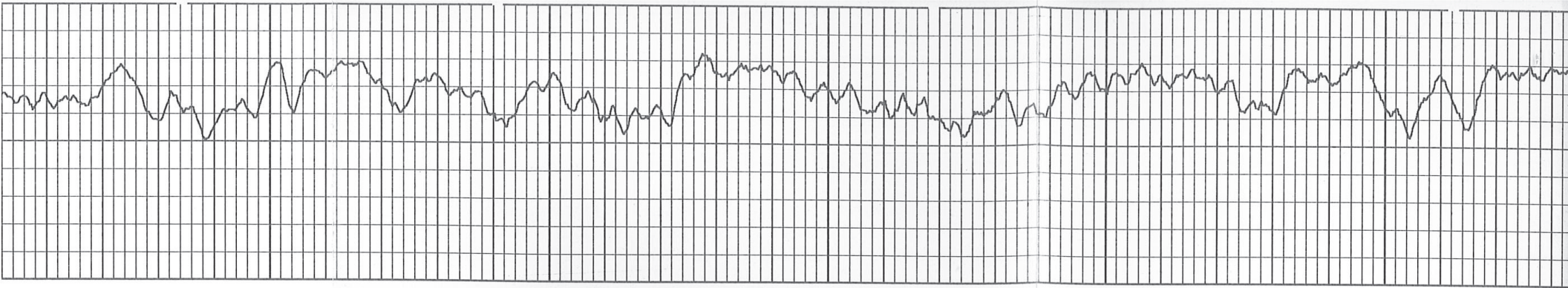
CLIP 2-4	INCHES	BHV	OHMM	TENSION
6	16	BHV	0	100
CALIP 1-3			RMP GUARD	
6	16	>BHV<	0	10
		AHV	SH GUARD RES	10000
				POUNDS
0	150	<AHV>	0	0
			OHMM	500
				MMHO
				0
				DEEP COND

UPLOG # 2 Depth: 6206.00 Service:2111.0001 Unit:52546  
 Replay Log Date: 27-OCT-1993 Time: 06:21:11 Vers:2.32

MAIN PASS: 5" = 100'

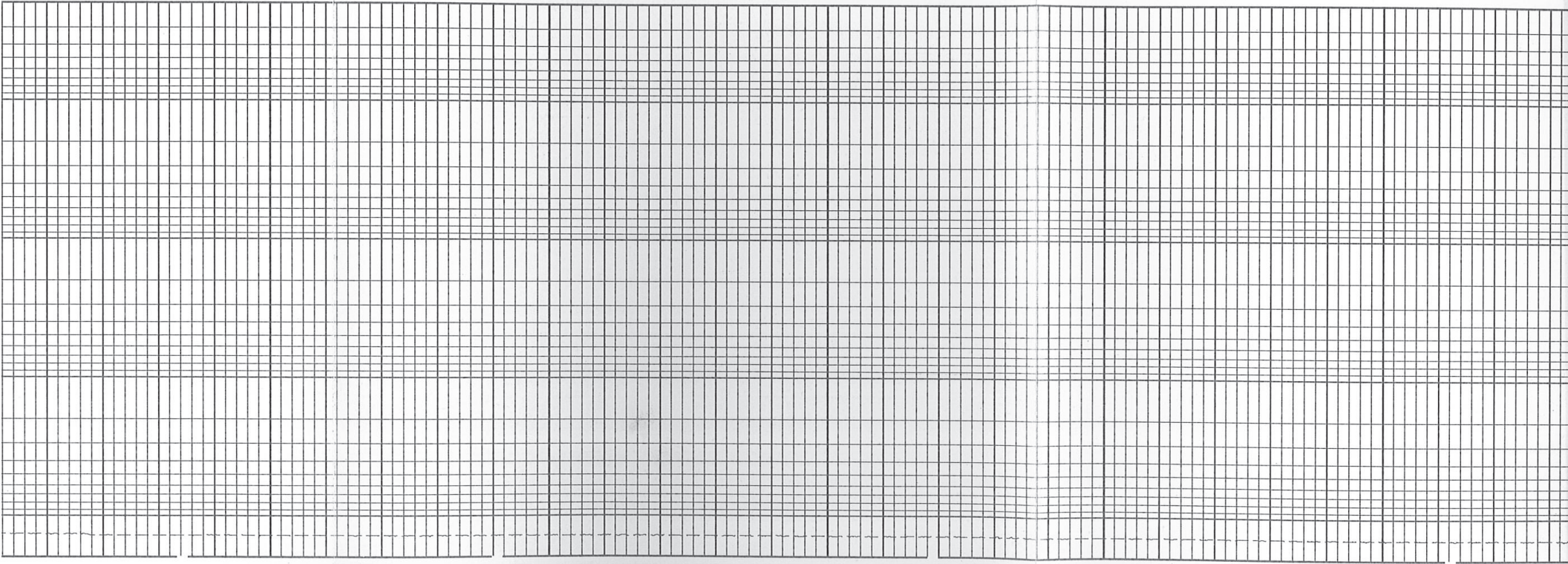
GAMMA	GAMMA API	DEEP RES	OHMM	TENSION
0	150	.2	0	2000
		SP	OHMM	
0	100	.2	0	2000
		MV	OHMM	
			SHORT GUARD	
			OHMM	2000
				TENSION
				POUNDS
				0

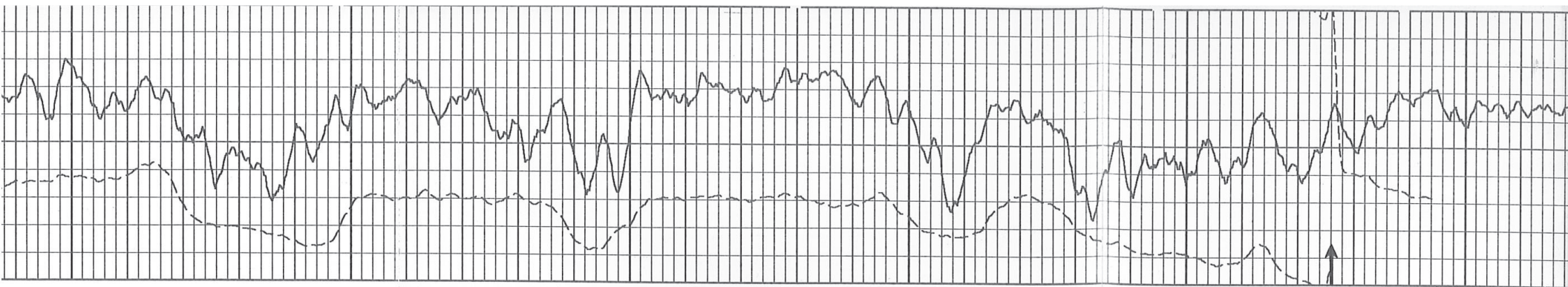




400

300



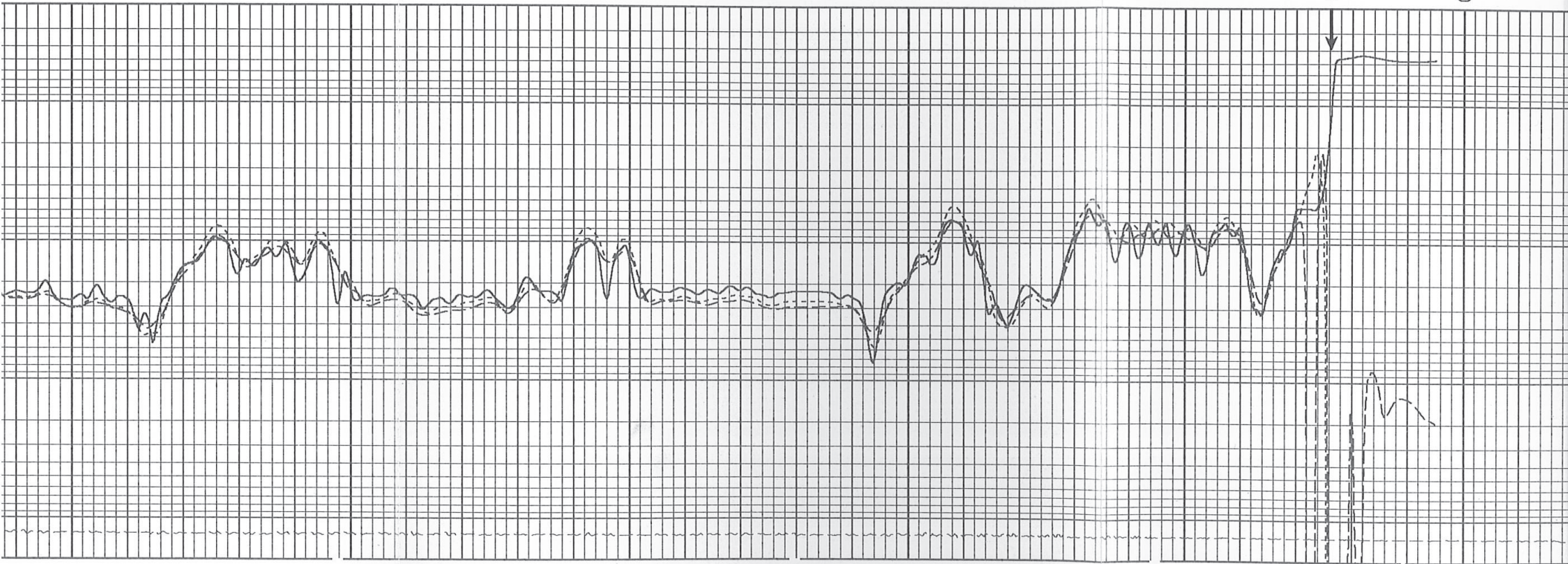


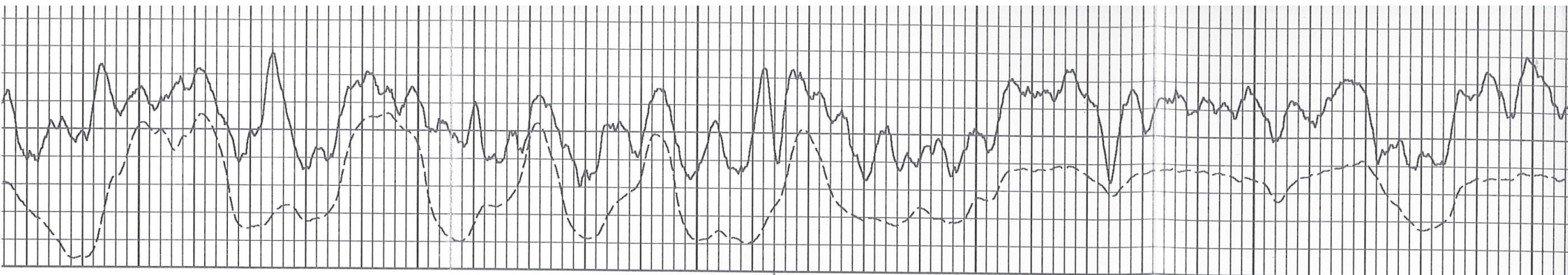
700

600

CASING

500



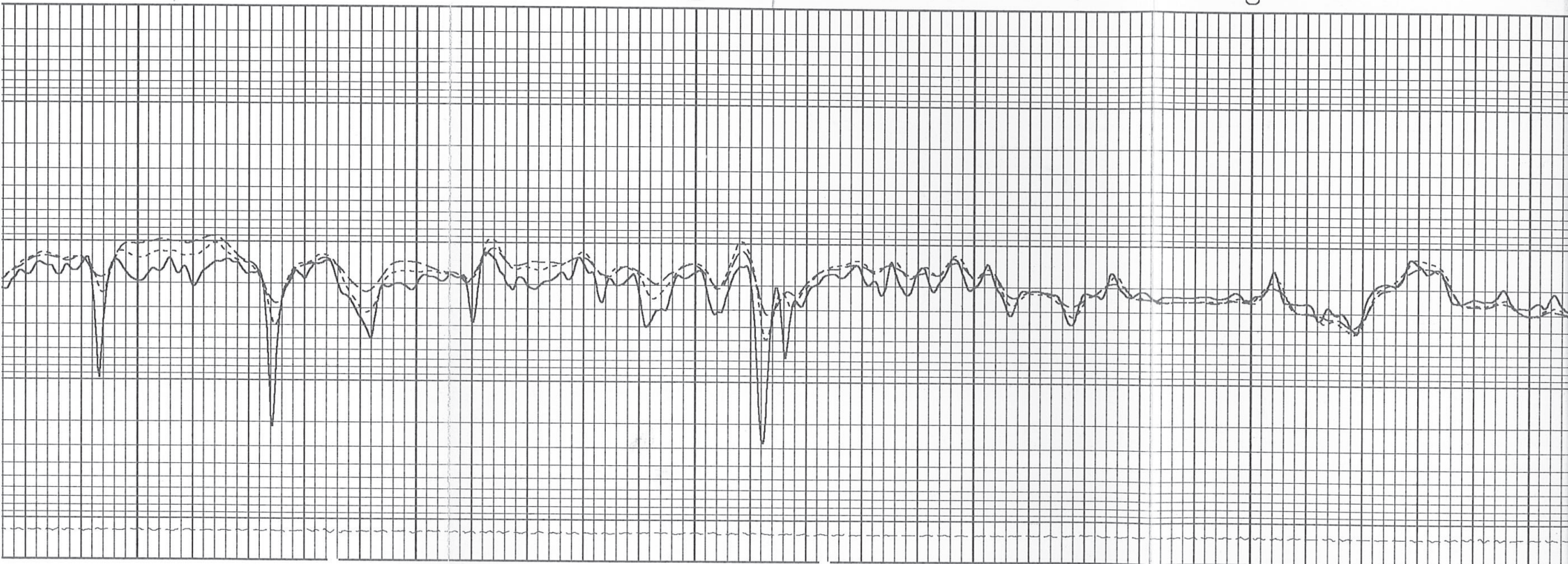


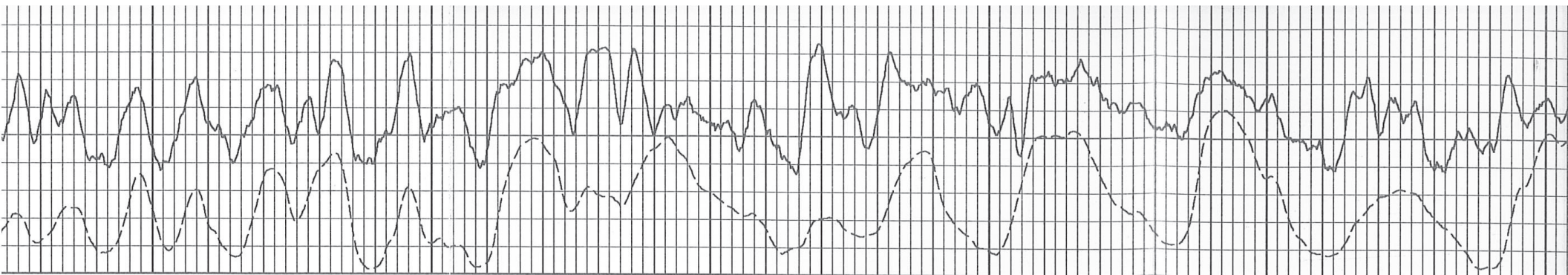
1000

900

Top  
Amplitude

800

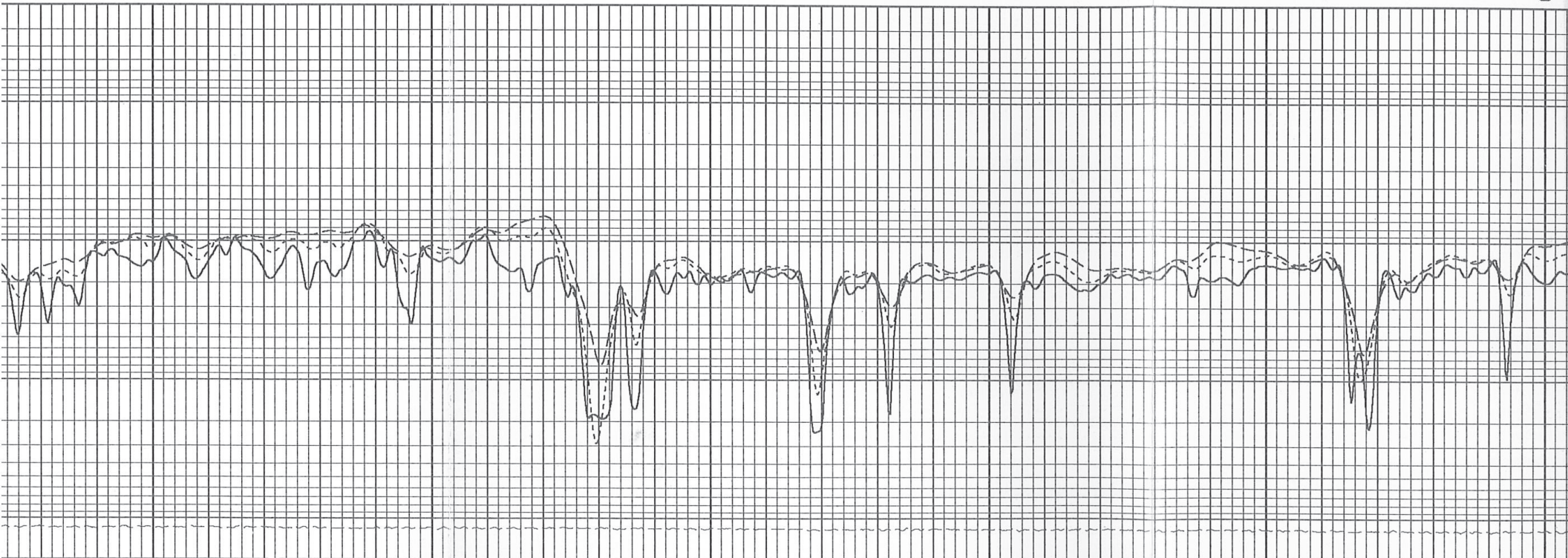


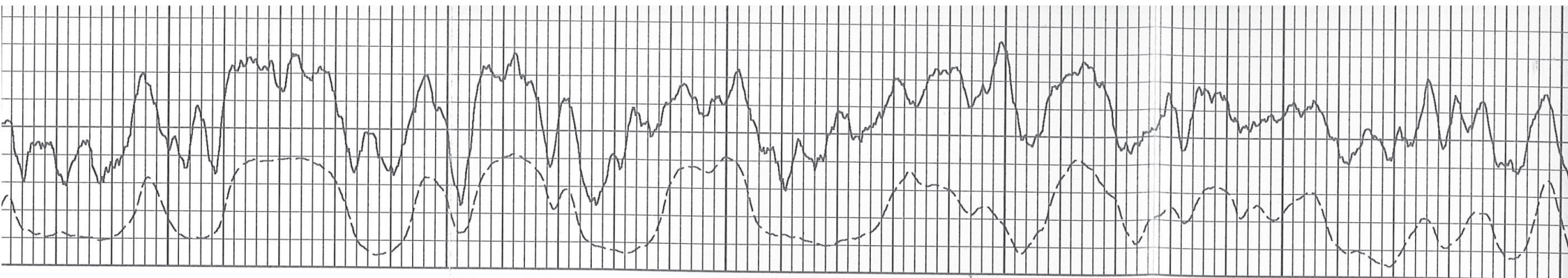


1200

1100

1000





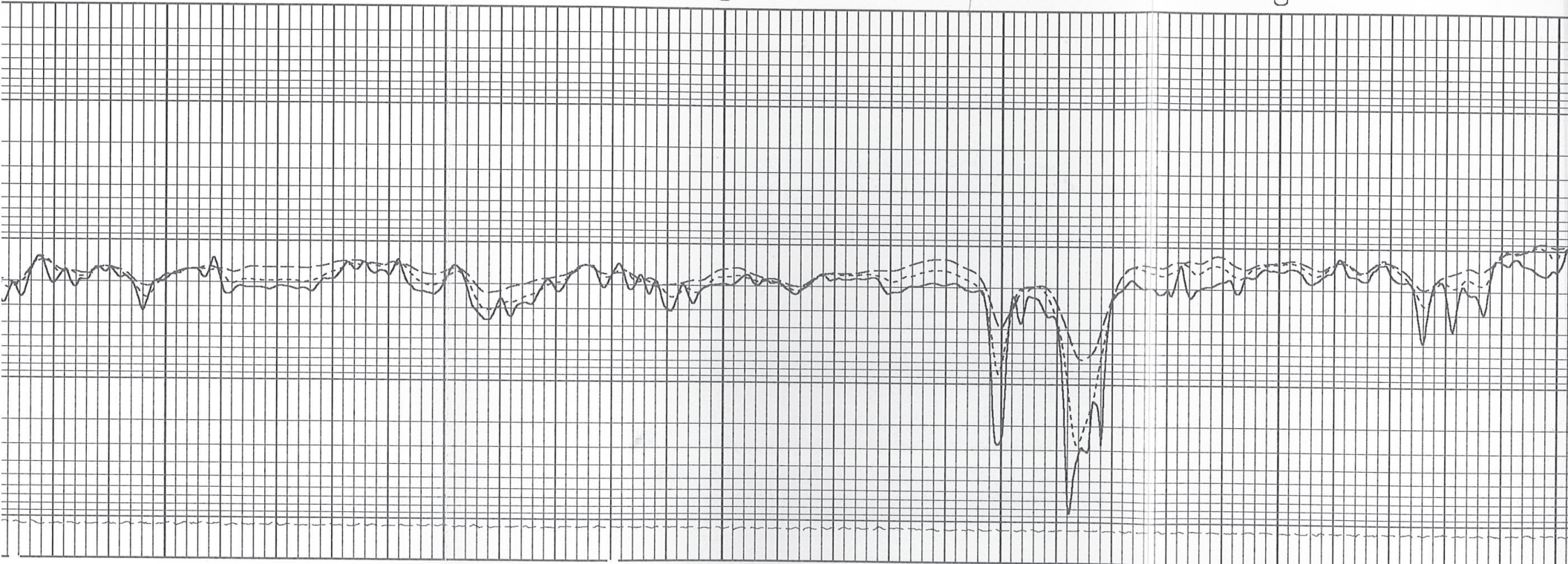
1500

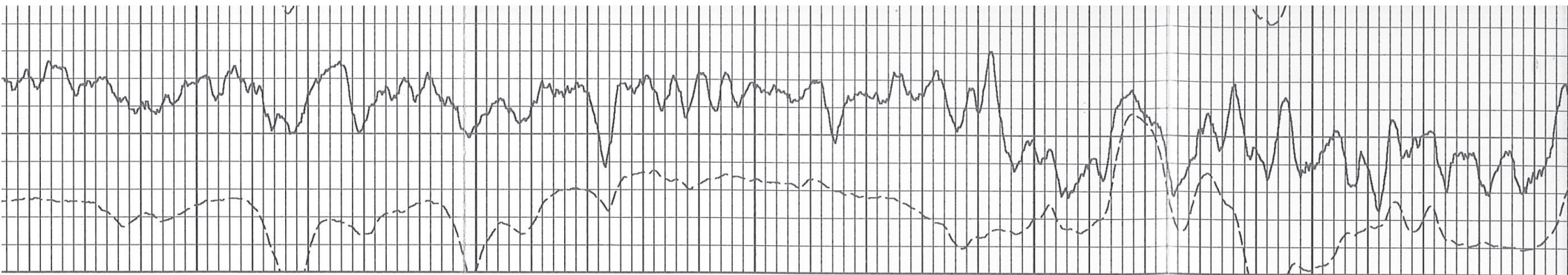
1400

Rollins

Top

1300



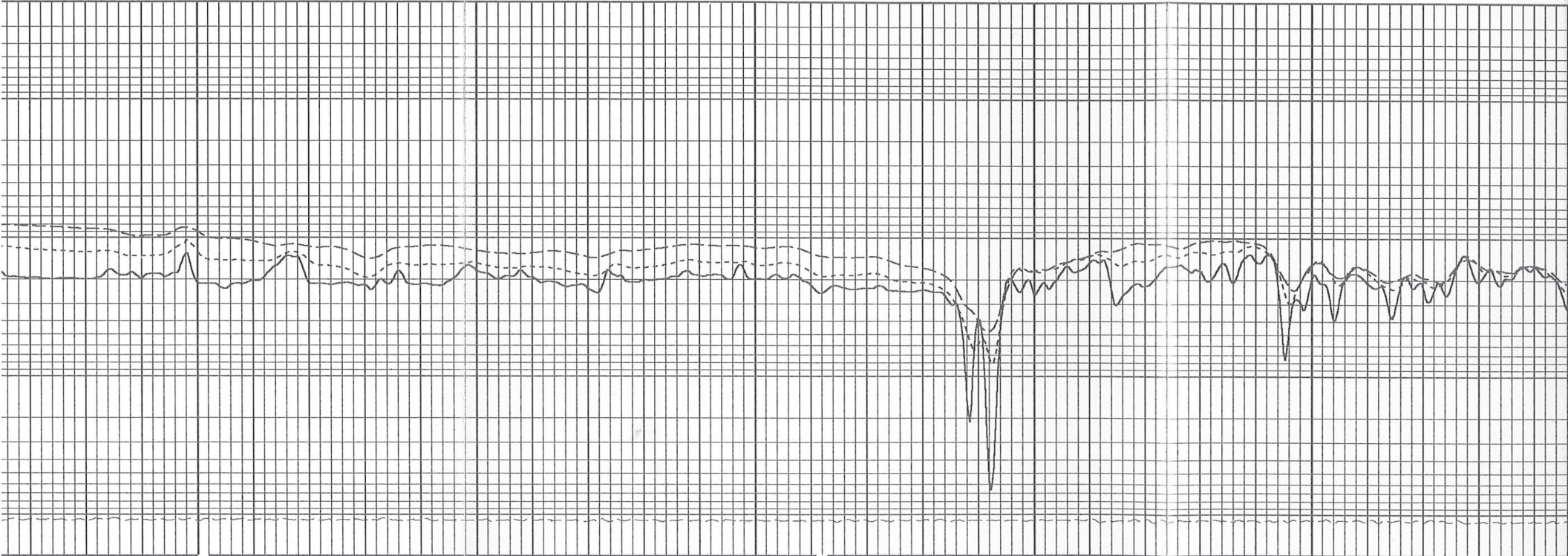


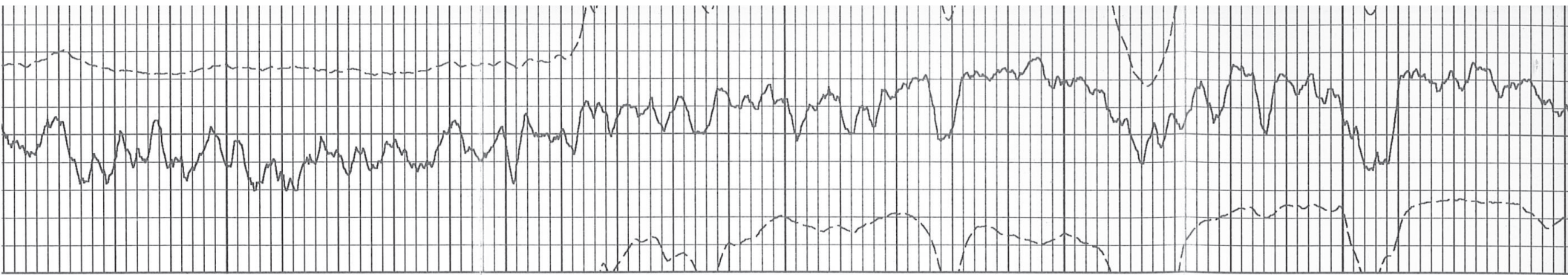
1700

0022

TOP

1600

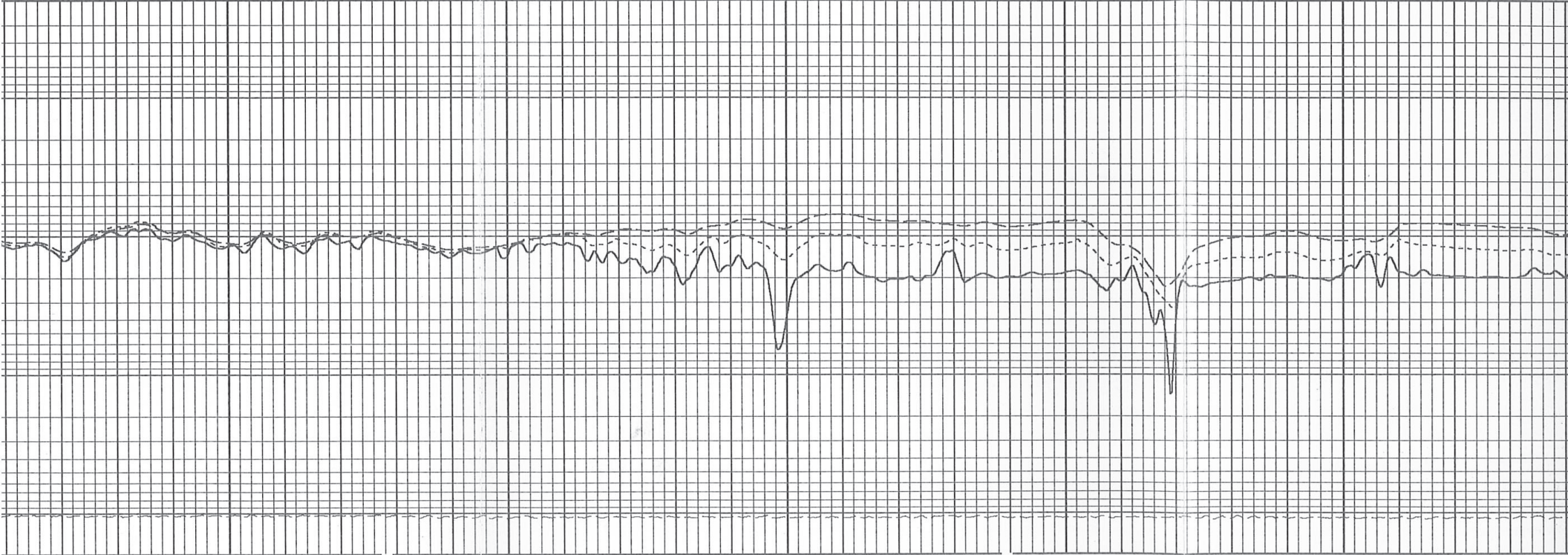


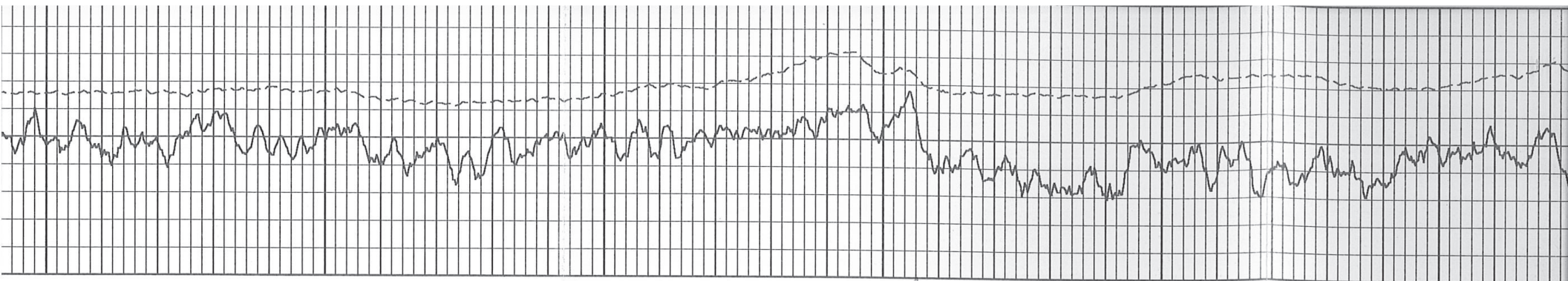


2000

1900

1800



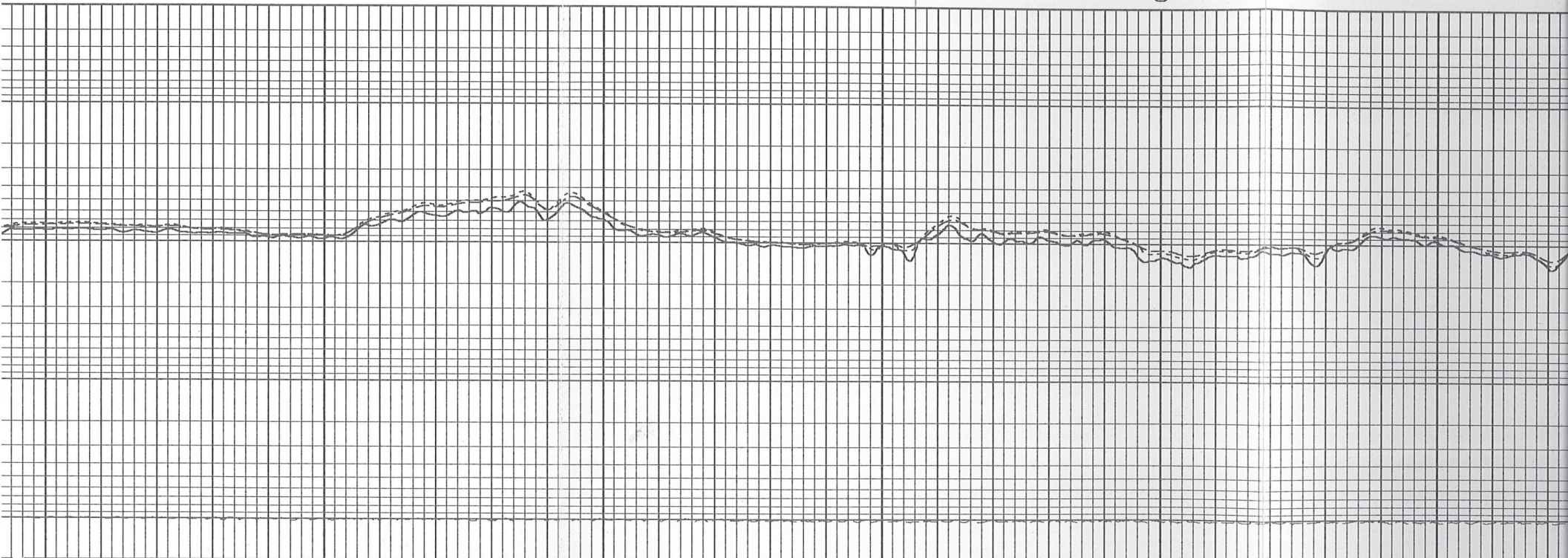


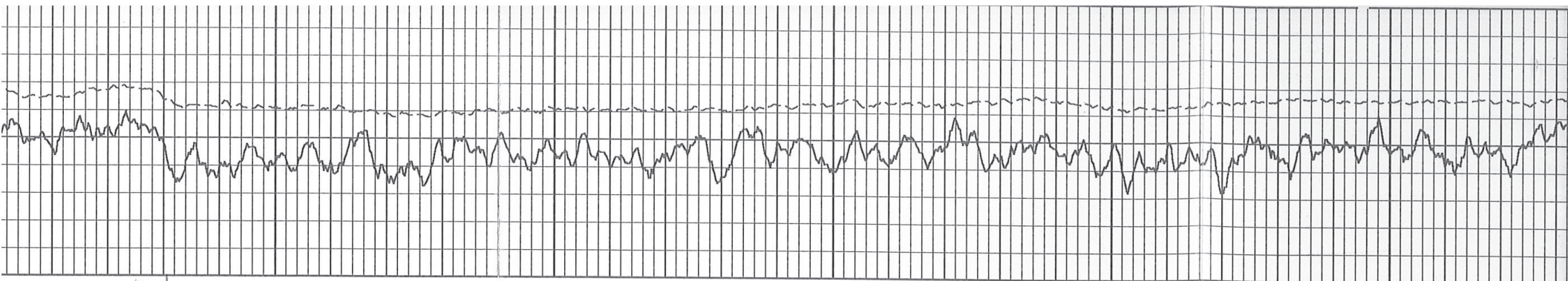
2300

2200

TOP  
CORE

2100





4.5gpo  
Top

2500

2400

2300

