

WPX Energy Rocky Mountain LLC - EBUS

GM 411-12

Nabors 573

Post Job Summary

Cement Surface Casing

Date Prepared: 12/29/2014

Job Date: 12/16/2014

Submitted by: Patrick Ealey – Grand Junction Cement Engineer

The Road to Excellence Starts with Safety

Sold To #: 300721	Ship To #: 3560557	Quote #:	Sales Order #: 0901937413
Customer: WPX ENERGY ROCKY MOUNTAIN LLC-EBUS		Customer Rep: BEAUDE OAKS	
Well Name: GM	Well #: 411-12	API/UWI #: 05-045-22462-00	
Field: GRAND VALLEY	City (SAP): PARACHUTE	County/Parish: GARFIELD	State: COLORADO
Legal Description: NE NW-12-7S-96W-1179FNL-1894FWL			
Contractor:		Rig/Platform Name/Num: Nabors 573	
Job BOM: 7521			
Well Type: DIRECTIONAL GAS			
Sales Person: HALAMERICA\HX23209		Srvc Supervisor: Eric Carter	
Job			

Formation Name	
Formation Depth (MD)	Top 0 FT. Bottom 1585 FT.
Form Type	BHST
Job depth MD	1574ft Job Depth TVD
Water Depth	Wk Ht Above Floor 4 FT.
Perforation Depth (MD)	From To

Well Data										
Description	New / Used	Size in	ID in	Weight lbm/ft	Thread	Grade	Top MD ft	Bottom MD ft	Top TVD ft	Bottom TVD ft
Casing		9.625	9.001	32.3	8 RD	H-40	0	1574		0
Open Hole Section			13.5				0	1585		0

Tools and Accessories									
Type	Size in	Qty	Make	Depth ft		Type	Size in	Qty	Make
Guide Shoe						Top Plug	9.625	1	HES
Float Shoe						Bottom Plug			
Float Collar						SSR plug set			
Insert Float						Plug Container	9.625	1	HES
Stage Tool						Centralizers			

Miscellaneous Materials											
Gelling Agt		Conc		Surfactant		Conc		Acid Type		Qty	Conc
Treatment Fld		Conc		Inhibitor		Conc		Sand Type		Size	Qty

Fluid Data										
Stage/Plug #: 1										
Fluid #	Stage Type	Fluid Name	Qty	Qty UoM	Mixing Density lbm/gal	Yield ft3/sack	Mix Fluid Gal	Rate bbl/min	Total Mix Fluid Gal	
1	Fresh Water	Fresh Water	20	bbl	8.34			4		
Fluid #	Stage Type	Fluid Name	Qty	Qty UoM	Mixing Density lbm/gal	Yield ft3/sack	Mix Fluid Gal	Rate bbl/min	Total Mix Fluid Gal	
2	VariCem GJ5	VARICEM (TM) CEMENT	235	sack	12.3	2.45	14.17	8		
14.10 Gal			FRESH WATER							

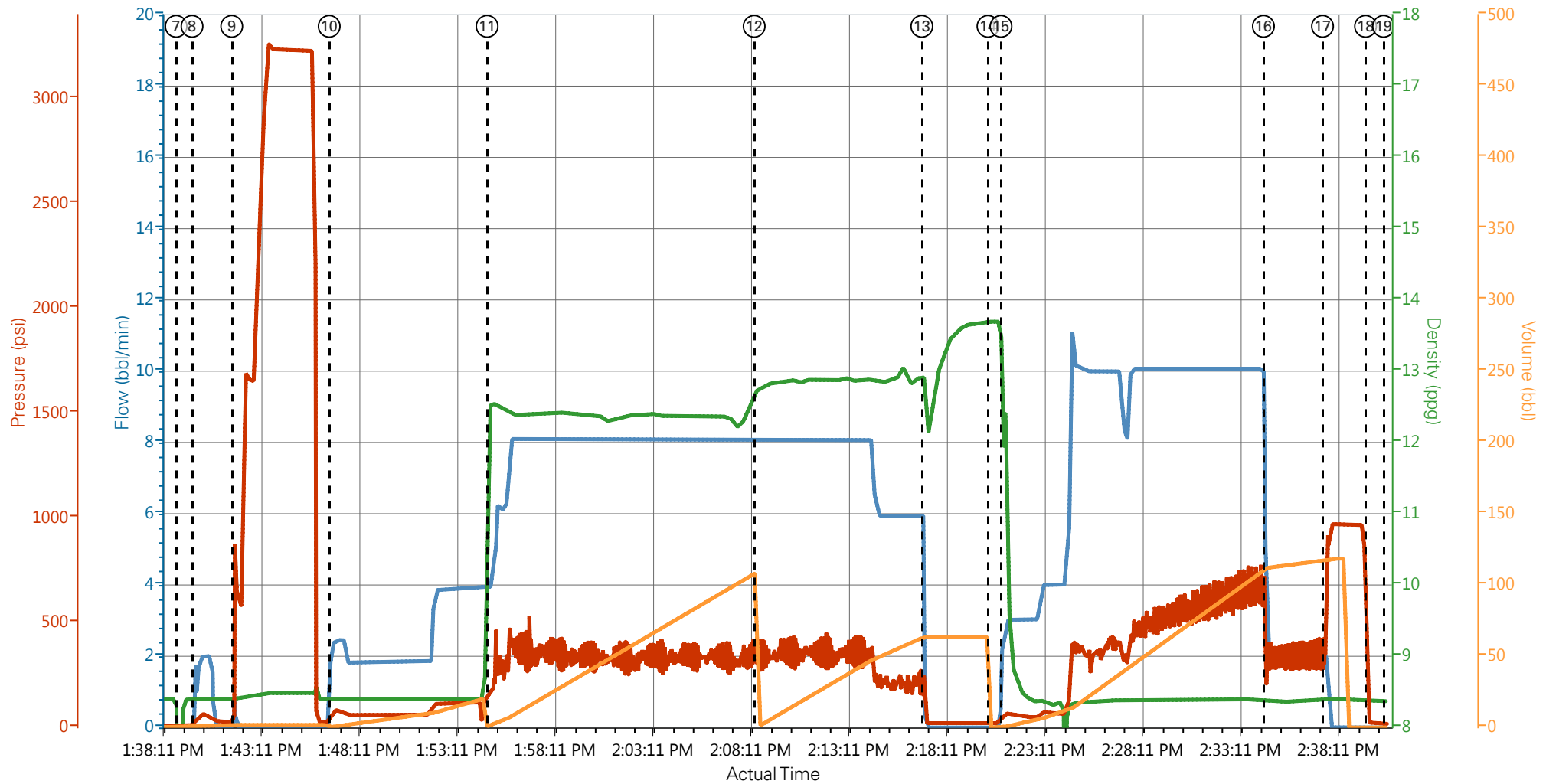
Fluid #	Stage Type	Fluid Name		Qty	Qty UoM	Mixing Density lbm/gal	Yield ft3/sack	Mix Fluid Gal	Rate bbl/min	Total Mix Fluid Gal
3	VariCem GJ5	VARICEM (TM) CEMENT		160	sack	12.8	2.18	12.11	8	
12.05 Gal		FRESH WATER								
Fluid #	Stage Type	Fluid Name		Qty	Qty UoM	Mixing Density lbm/gal	Yield ft3/sack	Mix Fluid Gal	Rate bbl/min	Total Mix Fluid Gal
4	Fresh Water Displacement	Fresh Water Displacement		120.3	bbl	8.34			10	
Cement Left In Pipe		Amount	46 ft			Reason		Shoe Joint		
Comment										

4.5 Job Event Log

Type	Seq. No.	Activity	Date	Time	Source	Downhole Density (ppg)	Combined Pump Rate (bbl/min)	Pass-Side Pump Pressure (psi)	Pump Stage Total (bbl)	Comment
Event	1	Arrive at Location from Other Job or Site	12/16/2014	08:00	USER					RIG RUNNING CASING
Event	2	Assessment Of Location Safety Meeting	12/16/2014	11:30	USER					ATTENDED BY ALL HES CREW
Event	3	Other	12/16/2014	11:40	USER					SPOT EQUIPMENT
Event	4	Pre-Rig Up Safety Meeting	12/16/2014	11:50	USER					ATTENDED BY ALL HES CREW
Event	5	Rig-Up Equipment	12/16/2014	12:00	USER					
Event	6	Pre-Job Safety Meeting	12/16/2014	13:00	USER					ATTENDED BY ALL HES CREW, RIG CREW AND COMPANY REP
Event	7	Start Job	12/16/2014	13:19:00	USER					TP 1574', TD 1585', MW 9.6 PPG, CASING 9.625", 32.3#, H-40, HOLE 13.5", RIG CIRCULATED FOR 2 HR'S PRIOR TO JOB
Event	8	Other	12/16/2014	13:19:48	USER	8.34	2	60	2	FRESH WATER
Event	9	Test Lines	12/16/2014	13:21:50	USER					PRESSURED UP TO 3240 PSI, PRESSURE HELD
Event	10	Pump Spacer	12/16/2014	13:26:49	USER	8.34	4	130	20	FRESH WATER
Event	11	Pump Lead Cement	12/16/2014	13:34:52	USER	12.3	8	380	102.5	235 SKS VARICEM MIXED AT 12.3 PPG, 2.45 YIELD, 14.17 GL/SK
Event	12	Pump Tail Cement	12/16/2014	13:48:30	USER	12.8	8	350	62.1	160 SKS VARICEM MIXED AT 12.8 PPG, 2.18 YIELD, 12.11 GL/SK
Event	13	Shutdown	12/16/2014	13:57:04	USER					
Event	14	Drop Top Plug	12/16/2014	14:00:27	USER					PLUG LAUNCHED
Event	15	Pump Displacement	12/16/2014	14:01:06	USER	8.34	10	680	110.3	FRESH WATER
Event	16	Slow Rate	12/16/2014	14:14:31	USER	8.34	2	350	10	
Event	17	Bump Plug	12/16/2014	14:17:32	USER			970		PLUG LANDED

Event	18	Check Floats	12/16/2014	14:19:43	USER	FLOATS HELD
Event	19	End Job	12/16/2014	14:20:38	USER	GOOD CIRCULATION THROUGHOUT JOB, 50 BBLS CEMENT TO SURFACE, PIPE NOT MOVED DURING JOB
Event	20	Post-Job Safety Meeting (Pre Rig-Down)	12/16/2014	14:30	USER	ATTENDED BY ALL HES CREW
Event	21	Rig-Down Equipment	12/16/2014	14:40	USER	
Event	22	Depart Location Safety Meeting	12/16/2014	14:50	USER	ATTENDED BY ALL HES CREW
Event	23	Crew Leave Location	12/16/2014	15:00	USER	THANK YOU FOR USING HALLIBURTON CEMENT, ERIC CARTER AND CREW.

WPX - GM 411-12 - SURFACE



Comb Pump Rate (bbl/min) DH Density (ppg) PS Pump Press (psi) Pump Stg Tot (bbl)

① Arrive at Location from Other Job or Site n/a;n/a;n/a;n/a	⑥ Pre-Job Safety Meeting n/a;n/a;n/a;n/a	⑪ Pump Lead Cement 3.95;12.55;171.22;1.48	⑯ Slow Rate 2.54;8.38;358.72;112.12
② Assessment Of Location Safety Meeting n/a;n/a;n/a;n/a	⑦ Start Job 0;6.5;3.4;0	⑫ Pump Tail Cement 8.06;12.72;309.03;0.54	⑰ Bump Plug 2;8.38;543.41;118.27
③ Other n/a;n/a;n/a;n/a	⑧ Fill Lines 1.86;8.39;34.34;0.07	⑬ Shutdown 0;12.9;18.4;63.62	⑱ Check Floats 0;8.38;19.34;0
④ Pre-Rig Up Safety Meeting n/a;n/a;n/a;n/a	⑨ Test Lines 0;8.38;754.35;1.75	⑭ Drop Top Plug 0;13.7;21.21;0	⑲ End Job 0;8.37;17.46;0
⑤ Rig-Up Equipment n/a;n/a;n/a;n/a	⑩ Pump Spacer 2.39;8.39;100.9;0.39	⑮ Pump Displacement 2.63;12.39;66.21;0.47	20 Post-Job Safety Meeting (Pre Rig-Down) n/a;n/a;n/a;n/a

▼ **HALLIBURTON** | iCem® Service

Created: 2014-12-16 14:16:21, Version: 3.0.121

Edit

Customer : WPX ENERGY ROCKY MOUNTAIN LLC-EBUS

Job Date : 12/16/2014

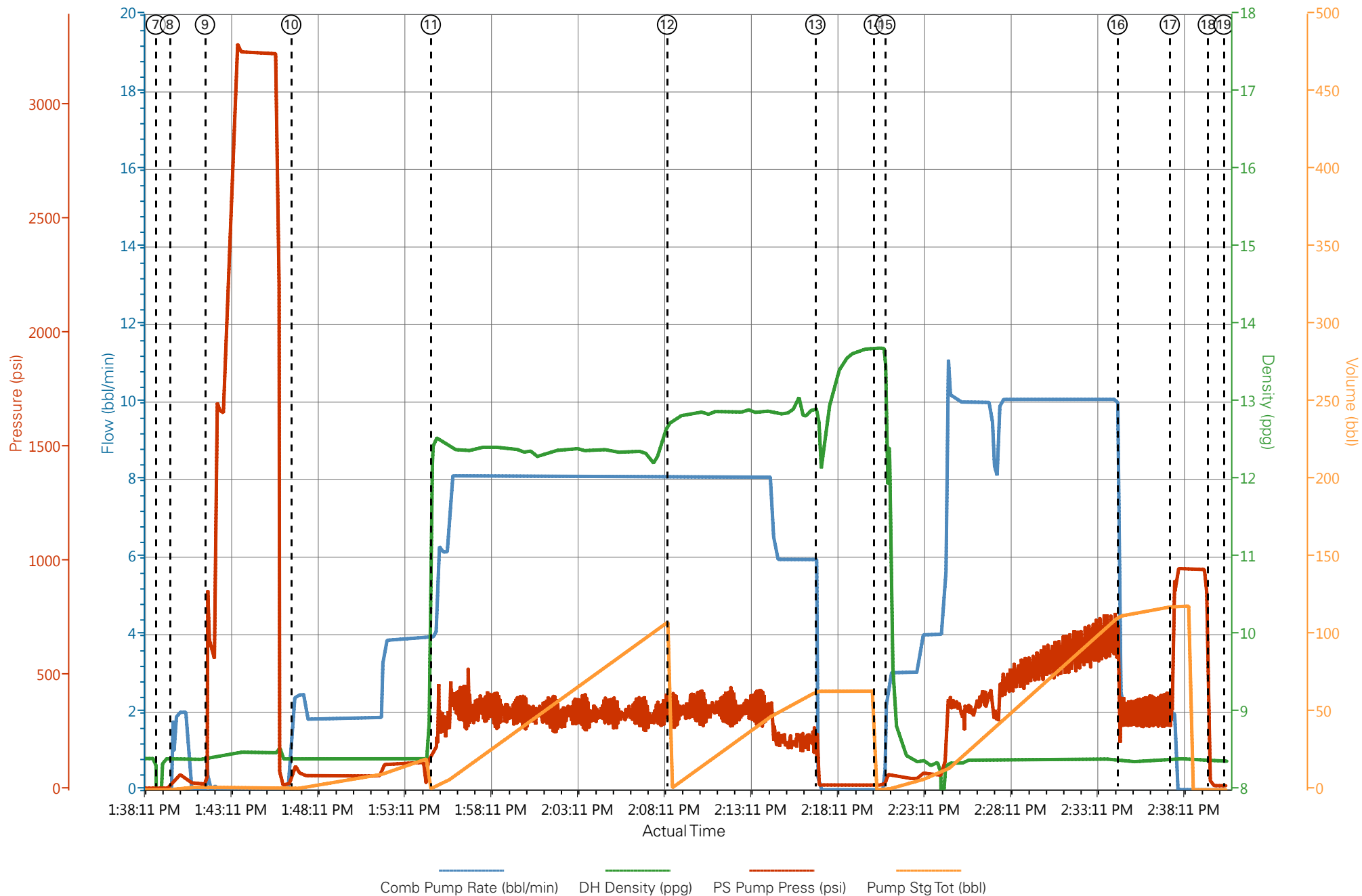
Well : GM 411-12

Representative : BEAUDE OAKS

Sales Order # : 901937413

ERIC CARTER : CLIFF SPARKS/ELITE 4

WPX - GM 411-12 - SURFACE



HALLIBURTON

Water Analysis Report

Company: WPX
Submitted by: ERIC CARTER
Attention: J.Trout
Lease: NABORS 573
Well #: GM 411-12

Date: 12/16/2014
Date Rec.: 12/16/2014
S.O.#: 901937413
Job Type: SURFACE

Specific Gravity	<i>MAX</i>	<i>1</i>
pH	<i>8</i>	<i>7</i>
Potassium (K)	<i>5000</i>	<i>0</i> Mg / L
Hardness	<i>500</i>	<i>250</i> Mg / L
Iron (FE2)	<i>300</i>	<i>0</i> Mg / L
Chlorides (Cl)	<i>3000</i>	<i>500</i> Mg / L
Sulfates (SO ₄)	<i>1500</i>	<i><200</i> Mg / L
Temp	<i>40-80</i>	<i>49</i> Deg
Total Dissolved Solids		<i>600</i> Mg / L

Respectfully: ERIC CARTER

Title: CEMENTING SUPERVISOR

Location: Grand Junction, CO

NOTICE:

This report is limited to the described sample tested. Any person using or relying on this report agrees that Halliburton shall not be liable for any loss or damage whether due to act or omission resulting from such report or its

Sales Order #: 0901937413	Line Item: 10	Survey Conducted Date: 12/16/2014
Customer: WPX ENERGY ROCKY MOUNTAIN LLC-EBUS		Job Type (BOM): CMT SURFACE CASING BOM
Customer Representative: BEAUDE OAKS		API / UWI: (leave blank if unknown) 05-045-22462-00
Well Name: GM		Well Number: 0080641114
Well Type: DIRECTIONAL GAS	Well Country: USA	
H2S Present: No	Well State: COLORADO	Well County: GARFIELD

Dear Customer,

We hope that you were satisfied with the service quality of this job performed by Halliburton. It is the aim of our management and service personnel to deliver equipment and service of a standard unmatched in the service sector of the energy industry.

Please take the time to let us know if our performance met with your satisfaction. Please be as critical as possible to ensure we constantly improve our service. Your comments are of great value to us and are intended for the exclusive use of Halliburton.

CUSTOMER SATISFACTION SURVEY

CATEGORY	CUSTOMER SATISFACTION RESPONSE	
Survey Conducted Date	The date the survey was conducted	12/16/2014
Survey Interviewer	The survey interviewer is the person who initiated the survey.	HX15491
Customer Participation	Did the customer participate in this survey? (Y/N)	Yes
Customer Representative	Enter the Customer representative name	BEAUDE OAKS
HSE	Was our HSE performance satisfactory? Circle Y or N	Yes
Equipment	Were you satisfied with our Equipment? Circle Y or N	Yes
Personnel	Were you satisfied with our people? Circle Y or N	Yes
Customer Comment	Customer's Comment	

CUSTOMER SIGNATURE

Sales Order #: 0901937413	Line Item: 10	Survey Conducted Date: 12/16/2014
Customer: WPX ENERGY ROCKY MOUNTAIN LLC-EBUS		Job Type (BOM): CMT SURFACE CASING BOM
Customer Representative: BEAUDE OAKS		API / UWI: (leave blank if unknown) 05-045-22462-00
Well Name: GM		Well Number: 0080641114
Well Type: DIRECTIONAL GAS	Well Country: USA	
H2S Present: No	Well State: COLORADO	Well County: GARFIELD

KEY PERFORMANCE INDICATORS

General	
Survey Conducted Date The date the survey was conducted	12/16/2014

Cementing KPI Survey	
Type of Job Select the type of job. (Cementing or Non-Cementing)	0
Select the Maximum Deviation range for this Job What is the highest deviation for the job you just completed? This may not be the maximum well deviation.	Vertical
Total Operating Time (hours) Total Operating Hours Including Rig-up, Pumping, Rig-down. Enter in decimal format.	3
HSE Incident, Accident, Injury HSE Incident, Accident, Injury. This should be recordable incidents only.	No
Was the job purpose achieved? Was the job delivered correctly as per customer agreed design?	Yes
Pumping Hours Total number of hours pumping fluid on this job. Enter in decimal format.	1
Type of Rig Classification Job Was Performed Type Of Rig (classification) Job Was Performed On	Drilling Rig (Portable)
Number Of JSAs Performed Number Of Jsas Performed	5
Was this a Primary Cement Job (Yes / No) Primary Cement Job= Casing job, Liner job, or Tie-back job.	Yes
Number of Unplanned Shutdowns Unplanned shutdown is when injection stops for any period of time.	0
Customer Non-Productive Rig Time (hrs)	0

Sales Order #: 0901937413	Line Item: 10	Survey Conducted Date: 12/16/2014
Customer: WPX ENERGY ROCKY MOUNTAIN LLC-EBUS		Job Type (BOM): CMT SURFACE CASING BOM
Customer Representative: BEAUDE OAKS		API / UWI: (leave blank if unknown) 05-045-22462-00
Well Name: GM		Well Number: 0080641114
Well Type: DIRECTIONAL GAS	Well Country: USA	
H2S Present: No	Well State: COLORADO	Well County: GARFIELD

Lost time due to Halliburton in the start, execution, or completion of an ordered service or product, or delays in a follow-on service. Enter in decimal format. 0 if none.	
Did We Run Wiper Plugs? Did We Run Top And Bottom Casing Wiper Plugs?	Top
If a top plug was run, was the plug bumped? (Yes/No/N/A) If a top plug was run, was the plug bumped? (Yes/No/N/A)	Yes
If applicable, did the floats hold? (Yes/No/N/A) If applicable, did the floats hold? (Yes/No/N/A)	Yes
Mixing Density of Job Stayed in Designed Density Range (0-100%) Density Range defined as +/- .20 ppg. Calculation: Total BBLs cement mixed at designed density divided by total BBLs of cement multiplied by 100	98
Pump Rate (percent) of Job Stayed At Designed Pump Rate Pump Rate range defined as +/- 1bbl/min. Calculation: Total BBLs of fluid pumped at the designed rate divided by Total BBLs of fluid pumped, multiplied by 100	98
If applicable, were there returns throughout the job? (Yes/No/N/A) If applicable, were there returns throughout the job? (Yes/No/N/A)	Y
Nbr of Remedial Plug Jobs Rqd - HES Number Of Remedial Plug Jobs Needed After Primary Plug Pumped By HES	0
Nbr of Remedial Sqz Jobs Rqd - HES Number Of Remedial Squeeze Jobs Required After Primary Job Performed By HES	0