

# Synergy Resources

Well Name: **SRC Gies D-15-22NHZ**

Surface Location: SRC Gies Pad Sec.15-T7N-R65W

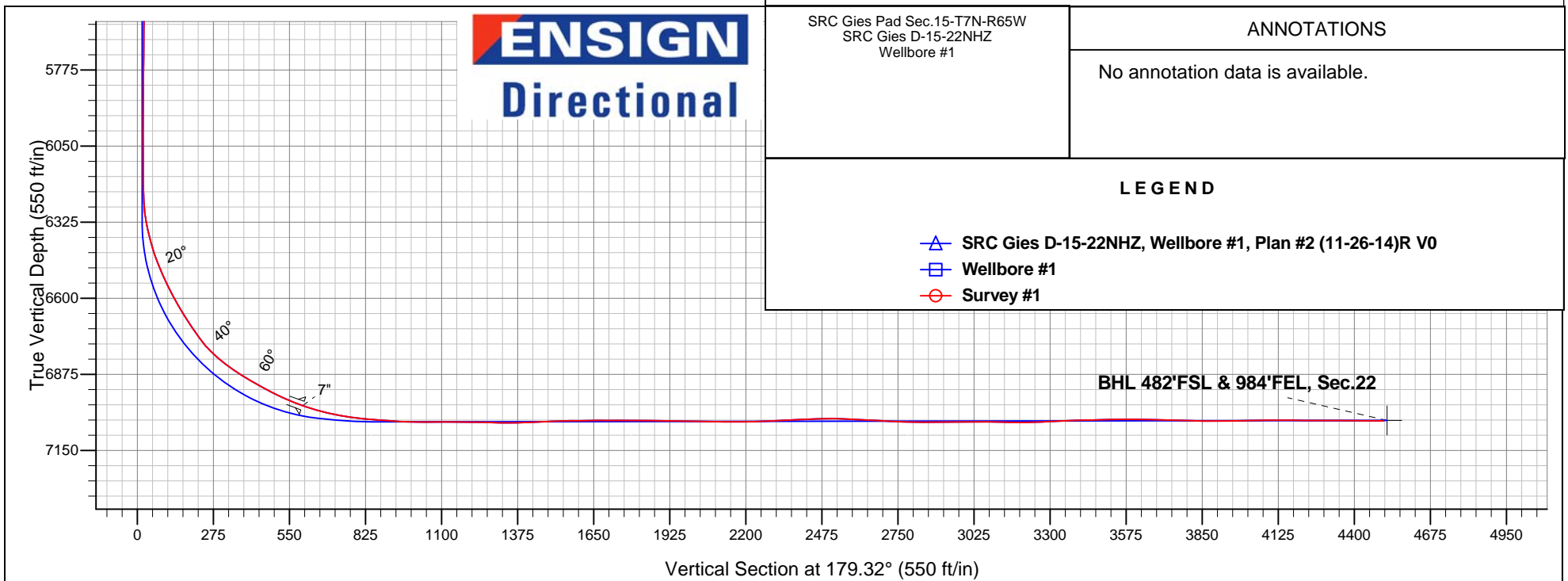
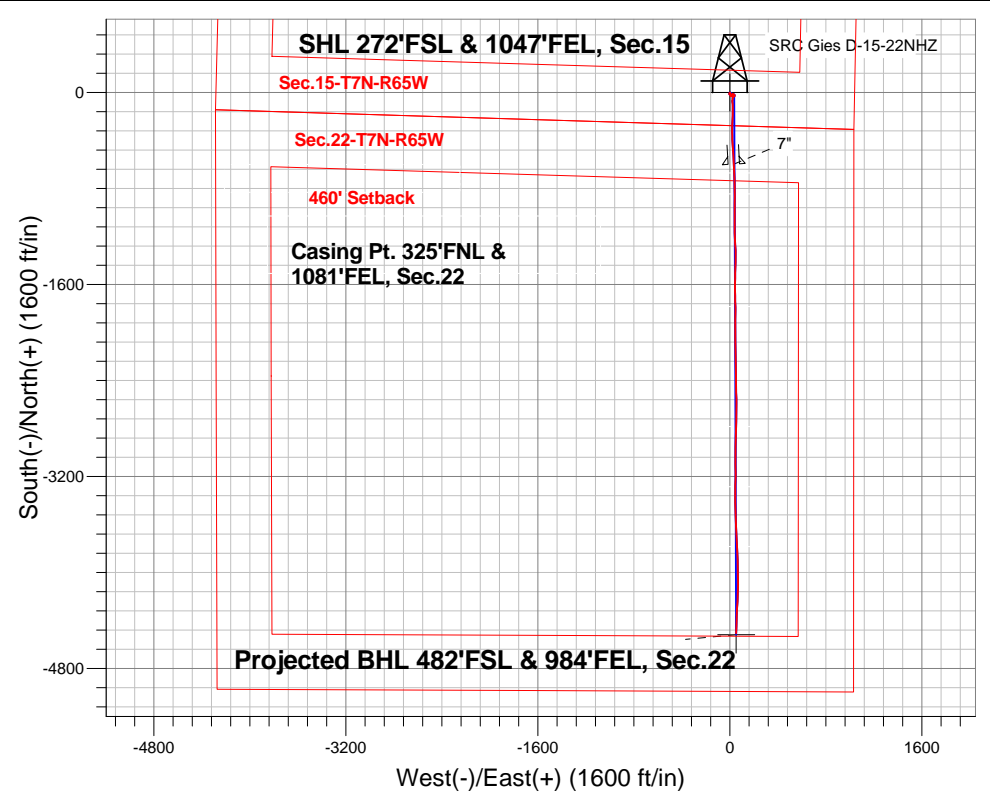
North American Datum 1983 , US State Plane 1983 , Colorado Northern Zone

Ground Elevation: 4838.0

+N/-S	+E/-W	Northing	Easting	Latitude	Longitude	Slot
0.0	0.0	1450672.27	3237958.53	40.567340	-104.643475	
RKB - 14' WELL @ 4852.0ft (RKB - 14')						

## FINAL SURVEY

Projected Bottom Hole Location  
11162'MD 7043'TVD 4505'S & 54'e of SHL  
89.7degree Incl @ 181.7 degree AZM



SRC Gies Pad Sec.15-T7N-R65W  
SRC Gies D-15-22NHZ  
Wellbore #1

### ANNOTATIONS

No annotation data is available.

### LEGEND

- △ SRC Gies D-15-22NHZ, Wellbore #1, Plan #2 (11-26-14)R V0
- Wellbore #1
- Survey #1



## **Synergy Resources**

**SEC.15-T7N-R65W**

**SRC Gies Pad Sec.15-T7N-R65W**

**SRC Gies D-15-22NHZ**

**Wellbore #1**

**Survey: Survey #1**

## **Standard Survey Report**

**15 December, 2014**

<b>Company:</b>	Synergy Resources	<b>Local Co-ordinate Reference:</b>	Well SRC Gies D-15-22NHZ
<b>Project:</b>	SEC.15-T7N-R65W	<b>TVD Reference:</b>	WELL @ 4852.0ft (RKB - 14')
<b>Site:</b>	SRC Gies Pad Sec.15-T7N-R65W	<b>MD Reference:</b>	WELL @ 4852.0ft (RKB - 14')
<b>Well:</b>	SRC Gies D-15-22NHZ	<b>North Reference:</b>	True
<b>Wellbore:</b>	Wellbore #1	<b>Survey Calculation Method:</b>	Minimum Curvature
<b>Design:</b>	Wellbore #1	<b>Database:</b>	Landmark

<b>Project</b>	SEC.15-T7N-R65W, Weld County, CO		
<b>Map System:</b>	US State Plane 1983	<b>System Datum:</b>	Mean Sea Level
<b>Geo Datum:</b>	North American Datum 1983		Using Well Reference Point
<b>Map Zone:</b>	Colorado Northern Zone		Using geodetic scale factor

Site		SRC Gies Pad Sec.15-T7N-R65W			
Position:		Northing:		1,450,674.24 ft	
From:		Easting:		3,237,858.77 ft	
Position Uncertainty:		Slot Radius:		Grid Convergence:	
Lat/Long		0.0 ft		40.567348	
				-104.643834	
				0.55 °	

Well	SRC Gies D-15-22NHZ					
Well Position	+N/-S	0.0 ft	Northing:	1,450,672.27 ft	Latitude:	40.567340
	+E/-W	0.0 ft	Easting:	3,237,958.53 ft	Longitude:	-104.643475
Position Uncertainty		0.0 ft	Wellhead Elevation:	ft	Ground Level:	4,838.0 ft

Wellbore	Wellbore #1				
Magnetics	Model Name	Sample Date	Declination (°)	Dip Angle (°)	Field Strength (nT)
	IGRF2010	11/26/2014	8.35	67.08	52,868

Design	Wellbore #1			
Audit Notes:				
Version:	1.0	Phase:	ACTUAL	Tie On Depth: 0.0
Vertical Section:	Depth From (TVD) (ft)	+N/-S (ft)	+E/-W (ft)	Direction (°)
	0.0	0.0	0.0	179.32

Survey Program		Date	12/15/2014		
From (ft)	To (ft)	Survey (Wellbore)	Tool Name	Description	
264.0	11,162.0	Survey #1 (Wellbore #1)	MWD	MWD - Standard	

Survey										
Measured Depth (ft)	Inclination (°)	Azimuth (°)	Vertical Depth (ft)	+N/-S (ft)	+E/-W (ft)	Vertical Section (ft)	Dogleg Rate (°/100ft)	Build Rate (°/100ft)	Turn Rate (°/100ft)	
0.0	0.00	0.00	0.0	0.0	0.0	0.0	0.00	0.00	0.00	
1.0	0.00	182.00	1.0	0.0	0.0	0.0	0.00	0.00	0.00	
SHL 272'FSL & 1047'FEL, Sec.15										
264.0	0.20	182.00	264.0	-0.5	0.0	0.5	0.08	0.08	0.00	
356.0	0.10	211.40	356.0	-0.7	-0.1	0.7	0.13	-0.11	31.96	
448.0	0.30	197.00	448.0	-1.0	-0.2	1.0	0.22	0.22	-15.65	
540.0	0.40	237.10	540.0	-1.4	-0.5	1.4	0.28	0.11	43.59	
624.0	0.40	253.90	624.0	-1.6	-1.0	1.6	0.14	0.00	20.00	
722.0	0.30	175.70	722.0	-2.0	-1.4	2.0	0.46	-0.10	-79.80	
815.0	0.20	162.90	815.0	-2.4	-1.3	2.4	0.12	-0.11	-13.76	
1,000.0	0.70	157.40	1,000.0	-3.7	-0.8	3.7	0.27	0.27	-2.97	
1,108.0	0.40	145.80	1,108.0	-4.7	-0.3	4.7	0.29	-0.28	-10.74	
1,293.0	0.70	139.00	1,293.0	-6.0	0.8	6.1	0.17	0.16	-3.68	

<b>Company:</b>	Synergy Resources	<b>Local Co-ordinate Reference:</b>	Well SRC Gies D-15-22NHZ
<b>Project:</b>	SEC.15-T7N-R65W	<b>TVD Reference:</b>	WELL @ 4852.0ft (RKB - 14')
<b>Site:</b>	SRC Gies Pad Sec.15-T7N-R65W	<b>MD Reference:</b>	WELL @ 4852.0ft (RKB - 14')
<b>Well:</b>	SRC Gies D-15-22NHZ	<b>North Reference:</b>	True
<b>Wellbore:</b>	Wellbore #1	<b>Survey Calculation Method:</b>	Minimum Curvature
<b>Design:</b>	Wellbore #1	<b>Database:</b>	Landmark

#### Survey

Measured Depth (ft)	Inclination (°)	Azimuth (°)	Vertical Depth (ft)	+N/-S (ft)	+E/-W (ft)	Vertical Section (ft)	Dogleg Rate (°/100ft)	Build Rate (°/100ft)	Turn Rate (°/100ft)
1,478.0	0.30	66.70	1,478.0	-6.7	2.0	6.7	0.36	-0.22	-39.08
1,663.0	0.40	277.80	1,663.0	-6.4	1.8	6.4	0.36	0.05	-80.49
1,849.0	0.50	286.30	1,849.0	-6.1	0.4	6.1	0.06	0.05	4.57
2,034.0	0.50	237.70	2,034.0	-6.3	-1.1	6.3	0.22	0.00	-26.27
2,219.0	0.40	225.60	2,218.9	-7.2	-2.2	7.2	0.07	-0.05	-6.54
2,404.0	1.10	223.20	2,403.9	-8.9	-3.9	8.9	0.38	0.38	-1.30
2,497.0	2.70	166.00	2,496.9	-11.7	-4.0	11.7	2.47	1.72	-61.51
2,589.0	3.30	135.80	2,588.8	-15.7	-1.6	15.7	1.81	0.65	-32.83
2,682.0	4.00	123.00	2,681.6	-19.4	3.0	19.4	1.15	0.75	-13.76
2,777.0	4.30	126.10	2,776.3	-23.3	8.6	23.4	0.39	0.32	3.26
2,872.0	3.80	121.70	2,871.1	-27.1	14.2	27.2	0.62	-0.53	-4.63
2,967.0	4.00	106.30	2,965.9	-29.6	20.1	29.9	1.12	0.21	-16.21
3,063.0	3.90	107.10	3,061.6	-31.5	26.4	31.9	0.12	-0.10	0.83
3,158.0	2.50	85.30	3,156.5	-32.3	31.5	32.7	1.93	-1.47	-22.95
3,253.0	2.60	84.30	3,251.4	-31.9	35.7	32.4	0.12	0.11	-1.05
3,348.0	2.40	41.40	3,346.3	-30.2	39.2	30.7	1.93	-0.21	-45.16
3,444.0	1.50	358.30	3,442.3	-27.5	40.5	28.0	1.73	-0.94	-44.90
3,539.0	1.50	352.90	3,537.2	-25.0	40.3	25.5	0.15	0.00	-5.68
3,634.0	1.20	15.20	3,632.2	-22.8	40.4	23.3	0.63	-0.32	23.47
3,730.0	1.20	16.60	3,728.2	-20.9	41.0	21.4	0.03	0.00	1.46
3,825.0	1.20	287.10	3,823.2	-19.6	40.3	20.1	1.78	0.00	-94.21
3,920.0	1.50	310.90	3,918.1	-18.5	38.4	19.0	0.66	0.32	25.05
4,015.0	1.80	303.70	4,013.1	-16.9	36.2	17.3	0.38	0.32	-7.58
4,110.0	1.90	306.80	4,108.1	-15.1	33.7	15.5	0.15	0.11	3.26
4,206.0	2.00	309.50	4,204.0	-13.1	31.2	13.5	0.14	0.10	2.81
4,301.0	1.80	288.40	4,299.0	-11.6	28.5	11.9	0.76	-0.21	-22.21
4,396.0	2.00	285.00	4,393.9	-10.7	25.4	11.0	0.24	0.21	-3.58
4,491.0	1.80	271.10	4,488.8	-10.2	22.4	10.5	0.53	-0.21	-14.63
4,586.0	1.40	246.90	4,583.8	-10.6	19.8	10.9	0.82	-0.42	-25.47
4,682.0	1.80	241.80	4,679.8	-11.8	17.4	12.0	0.44	0.42	-5.31
4,777.0	2.90	207.20	4,774.7	-14.6	15.0	14.8	1.84	1.16	-36.42
4,872.0	2.60	201.70	4,869.6	-18.8	13.1	18.9	0.42	-0.32	-5.79
4,968.0	2.30	158.50	4,965.5	-22.6	13.0	22.7	1.90	-0.31	-45.00
5,063.0	2.10	179.00	5,060.4	-26.1	13.7	26.3	0.85	-0.21	21.58
5,158.0	2.00	240.00	5,155.4	-28.7	12.3	28.8	2.19	-0.11	64.21
5,253.0	1.00	315.60	5,250.4	-28.9	10.3	29.0	2.11	-1.05	79.58
5,349.0	1.60	60.20	5,346.3	-27.7	10.9	27.8	2.18	0.63	108.96
5,444.0	1.40	37.70	5,441.3	-26.1	12.7	26.2	0.65	-0.21	-23.68
5,539.0	1.70	58.80	5,536.3	-24.4	14.6	24.6	0.67	0.32	22.21
5,634.0	1.10	43.90	5,631.3	-23.0	16.5	23.2	0.73	-0.63	-15.68
5,730.0	1.70	77.30	5,727.2	-22.1	18.5	22.3	1.03	0.63	34.79
5,825.0	1.40	66.40	5,822.2	-21.3	20.9	21.5	0.44	-0.32	-11.47
5,920.0	1.20	59.50	5,917.2	-20.3	22.9	20.6	0.27	-0.21	-7.26
6,015.0	0.90	104.30	6,012.2	-20.0	24.4	20.3	0.89	-0.32	47.16
6,111.0	0.20	37.50	6,108.1	-20.1	25.3	20.4	0.88	-0.73	-69.58
6,206.0	1.50	179.20	6,203.1	-21.2	25.4	21.5	1.75	1.37	149.16
6,253.0	2.80	185.00	6,250.1	-22.9	25.3	23.2	2.80	2.77	12.34
6,301.0	7.70	189.80	6,297.9	-27.3	24.7	27.6	10.24	10.21	10.00
6,348.0	12.30	184.50	6,344.2	-35.4	23.7	35.6	9.97	9.79	-11.28
6,396.0	14.70	184.10	6,390.8	-46.5	22.9	46.8	5.00	5.00	-0.83
6,443.0	17.90	183.30	6,435.9	-59.7	22.0	60.0	6.83	6.81	-1.70
6,492.0	22.00	179.60	6,482.0	-76.4	21.7	76.7	8.75	8.37	-7.55
6,539.0	24.90	176.70	6,525.1	-95.1	22.3	95.3	6.64	6.17	-6.17
6,587.0	27.20	176.60	6,568.2	-116.1	23.5	116.4	4.79	4.79	-0.21

<b>Company:</b>	Synergy Resources	<b>Local Co-ordinate Reference:</b>	Well SRC Gies D-15-22NHZ
<b>Project:</b>	SEC.15-T7N-R65W	<b>TVD Reference:</b>	WELL @ 4852.0ft (RKB - 14')
<b>Site:</b>	SRC Gies Pad Sec.15-T7N-R65W	<b>MD Reference:</b>	WELL @ 4852.0ft (RKB - 14')
<b>Well:</b>	SRC Gies D-15-22NHZ	<b>North Reference:</b>	True
<b>Wellbore:</b>	Wellbore #1	<b>Survey Calculation Method:</b>	Minimum Curvature
<b>Design:</b>	Wellbore #1	<b>Database:</b>	Landmark

Survey										
Measured Depth (ft)	Inclination (°)	Azimuth (°)	Vertical Depth (ft)	+N/-S (ft)	+E/-W (ft)	Vertical Section (ft)	Dogleg Rate (°/100ft)	Build Rate (°/100ft)	Turn Rate (°/100ft)	
6,634.0	29.10	179.00	6,609.7	-138.3	24.4	138.6	4.71	4.04	5.11	
6,682.0	30.90	181.50	6,651.2	-162.3	24.3	162.5	4.56	3.75	5.21	
6,729.0	32.90	181.50	6,691.1	-187.1	23.6	187.4	4.26	4.26	0.00	
6,777.0	35.40	182.00	6,730.9	-214.0	22.8	214.3	5.24	5.21	1.04	
6,824.0	40.30	182.50	6,768.0	-242.8	21.6	243.1	10.45	10.43	1.06	
6,873.0	47.20	181.70	6,803.3	-276.7	20.4	276.9	14.13	14.08	-1.63	
6,920.0	52.40	179.90	6,833.7	-312.6	19.9	312.8	11.44	11.06	-3.83	
6,968.0	55.20	179.20	6,862.0	-351.3	20.2	351.5	5.95	5.83	-1.46	
7,015.0	59.30	176.70	6,887.4	-390.8	21.7	391.0	9.80	8.72	-5.32	
7,063.0	60.70	176.90	6,911.4	-432.3	24.0	432.5	2.94	2.92	0.42	
7,110.0	62.10	176.40	6,933.9	-473.5	26.4	473.8	3.12	2.98	-1.06	
7,159.0	65.20	176.20	6,955.7	-517.3	29.2	517.6	6.34	6.33	-0.41	
7,206.0	67.70	177.10	6,974.4	-560.3	31.8	560.6	5.60	5.32	1.91	
7,245.0	70.46	177.10	6,988.4	-596.7	33.6	597.0	7.08	7.08	0.00	
7"										
7,254.0	71.10	177.10	6,991.3	-605.2	34.0	605.5	7.08	7.08	0.00	
7,301.0	74.50	177.50	7,005.2	-650.0	36.1	650.4	7.28	7.23	0.85	
7,328.3	75.81	177.50	7,012.2	-676.4	37.3	676.8	4.79	4.79	0.00	
Casing Pt. (D-15-22NHZ)										
7,349.0	76.80	177.50	7,017.1	-696.5	38.2	696.9	4.79	4.79	0.00	
7,390.0	81.20	178.90	7,024.9	-736.7	39.4	737.1	11.24	10.73	3.41	
7,491.0	84.80	179.70	7,037.3	-836.9	40.7	837.3	3.65	3.56	0.79	
7,499.7	84.97	179.87	7,038.0	-845.5	40.7	846.0	2.70	1.91	1.92	
Landing Pt.571'FNL & 1001'FEL, Sec.22										
7,538.0	85.70	180.60	7,041.1	-883.7	40.5	884.2	2.70	1.92	1.91	
7,586.0	86.10	180.40	7,044.6	-931.6	40.1	932.0	0.93	0.83	-0.42	
7,633.0	88.50	180.30	7,046.8	-978.6	39.8	979.0	5.11	5.11	-0.21	
7,681.0	89.00	179.90	7,047.8	-1,026.5	39.7	1,026.9	1.33	1.04	-0.83	
7,728.0	90.40	180.30	7,048.1	-1,073.5	39.7	1,073.9	3.10	2.98	0.85	
7,777.0	90.70	179.70	7,047.6	-1,122.5	39.7	1,122.9	1.37	0.61	-1.22	
7,824.0	90.00	177.80	7,047.3	-1,169.5	40.7	1,169.9	4.31	-1.49	-4.04	
7,872.0	88.20	176.90	7,048.1	-1,217.5	42.9	1,217.9	4.19	-3.75	-1.88	
7,919.0	88.40	176.90	7,049.5	-1,264.4	45.4	1,264.8	0.43	0.43	0.00	
7,967.0	89.40	177.80	7,050.4	-1,312.3	47.7	1,312.8	2.80	2.08	1.88	
8,014.0	91.30	180.80	7,050.1	-1,359.3	48.2	1,359.8	7.56	4.04	6.38	
8,062.0	91.40	181.50	7,049.0	-1,407.3	47.3	1,407.7	1.47	0.21	1.46	
8,109.0	92.50	181.10	7,047.4	-1,454.2	46.2	1,454.7	2.49	2.34	-0.85	
8,158.0	93.10	181.00	7,045.0	-1,503.2	45.3	1,503.6	1.24	1.22	-0.20	
8,205.0	91.00	180.60	7,043.3	-1,550.1	44.7	1,550.6	4.55	-4.47	-0.85	
8,253.0	90.50	180.80	7,042.7	-1,598.1	44.1	1,598.5	1.12	-1.04	0.42	
8,300.0	90.90	179.90	7,042.1	-1,645.1	43.8	1,645.5	2.10	0.85	-1.91	
8,348.0	89.00	179.00	7,042.1	-1,693.1	44.2	1,693.5	4.38	-3.96	-1.88	
8,395.0	89.80	179.00	7,042.6	-1,740.1	45.1	1,740.5	1.70	1.70	0.00	
8,438.5	90.53	178.91	7,042.5	-1,783.6	45.9	1,784.1	1.68	1.67	-0.21	
WP#1 (D-15-22NHZ)										
8,443.0	90.60	178.90	7,042.5	-1,788.1	45.9	1,788.5	1.68	1.67	-0.21	
8,490.0	89.70	179.90	7,042.3	-1,835.1	46.4	1,835.5	2.86	-1.91	2.13	
8,539.0	89.30	180.80	7,042.8	-1,884.1	46.1	1,884.5	2.01	-0.82	1.84	
8,586.0	89.50	180.10	7,043.3	-1,931.1	45.8	1,931.5	1.55	0.43	-1.49	
8,634.0	88.20	180.10	7,044.2	-1,979.1	45.7	1,979.5	2.71	-2.71	0.00	
8,681.0	88.70	179.90	7,045.5	-2,026.1	45.7	2,026.5	1.15	1.06	-0.43	
8,729.0	89.30	179.40	7,046.3	-2,074.0	46.0	2,074.4	1.63	1.25	-1.04	
8,776.0	89.60	178.90	7,046.8	-2,121.0	46.7	2,121.4	1.24	0.64	-1.06	
8,824.0	90.40	179.00	7,046.8	-2,169.0	47.6	2,169.4	1.68	1.67	0.21	

<b>Company:</b>	Synergy Resources	<b>Local Co-ordinate Reference:</b>	Well SRC Gies D-15-22NHZ
<b>Project:</b>	SEC.15-T7N-R65W	<b>TVD Reference:</b>	WELL @ 4852.0ft (RKB - 14')
<b>Site:</b>	SRC Gies Pad Sec.15-T7N-R65W	<b>MD Reference:</b>	WELL @ 4852.0ft (RKB - 14')
<b>Well:</b>	SRC Gies D-15-22NHZ	<b>North Reference:</b>	True
<b>Wellbore:</b>	Wellbore #1	<b>Survey Calculation Method:</b>	Minimum Curvature
<b>Design:</b>	Wellbore #1	<b>Database:</b>	Landmark

Survey									
Measured Depth (ft)	Inclination (°)	Azimuth (°)	Vertical Depth (ft)	+N/-S (ft)	+E/-W (ft)	Vertical Section (ft)	Dogleg Rate (°/100ft)	Build Rate (°/100ft)	Turn Rate (°/100ft)
8,871.0	91.50	179.00	7,046.0	-2,216.0	48.4	2,216.4	2.34	2.34	0.00
8,920.0	91.50	179.20	7,044.7	-2,265.0	49.1	2,265.4	0.41	0.00	0.41
8,967.0	93.10	178.90	7,042.8	-2,311.9	49.9	2,312.4	3.46	3.40	-0.64
9,015.0	92.70	179.00	7,040.4	-2,359.9	50.8	2,360.3	0.86	-0.83	0.21
9,063.0	92.50	179.00	7,038.2	-2,407.8	51.6	2,408.3	0.42	-0.42	0.00
9,110.0	92.20	178.70	7,036.3	-2,454.8	52.6	2,455.2	0.90	-0.64	-0.64
9,157.0	90.40	178.90	7,035.2	-2,501.7	53.6	2,502.2	3.85	-3.83	0.43
9,205.0	87.10	178.90	7,036.3	-2,549.7	54.5	2,550.2	6.88	-6.88	0.00
9,252.0	87.40	179.70	7,038.5	-2,596.7	55.1	2,597.1	1.82	0.64	1.70
9,301.0	87.40	181.00	7,040.8	-2,645.6	54.8	2,646.1	2.65	0.00	2.65
9,348.0	87.10	180.80	7,043.0	-2,692.5	54.0	2,693.0	0.77	-0.64	-0.43
9,396.0	87.00	180.60	7,045.5	-2,740.5	53.4	2,740.9	0.47	-0.21	-0.42
9,439.3	88.38	181.61	7,047.2	-2,783.7	52.6	2,784.1	3.96	3.19	2.34
WP#2 (D-15-22NHZ)									
9,443.0	88.50	181.70	7,047.3	-2,787.4	52.5	2,787.9	3.96	3.19	2.34
9,491.0	89.50	182.50	7,048.2	-2,835.4	50.7	2,835.8	2.67	2.08	1.67
9,538.0	90.00	182.20	7,048.4	-2,882.4	48.8	2,882.7	1.24	1.06	-0.64
9,586.0	90.70	181.00	7,048.1	-2,930.3	47.5	2,930.7	2.89	1.46	-2.50
9,633.0	91.00	180.30	7,047.4	-2,977.3	46.9	2,977.7	1.62	0.64	-1.49
9,682.0	90.30	179.70	7,046.8	-3,026.3	46.9	3,026.7	1.88	-1.43	-1.22
9,729.0	89.50	179.20	7,046.9	-3,073.3	47.4	3,073.7	2.01	-1.70	-1.06
9,777.0	88.70	179.20	7,047.7	-3,121.3	48.1	3,121.7	1.67	-1.67	0.00
9,824.0	88.40	179.90	7,048.9	-3,168.3	48.4	3,168.6	1.62	-0.64	1.49
9,872.0	91.10	181.50	7,049.1	-3,216.3	47.8	3,216.6	6.54	5.63	3.33
9,919.0	92.70	182.00	7,047.5	-3,263.2	46.4	3,263.6	3.57	3.40	1.06
9,939.5	92.78	181.87	7,046.5	-3,283.7	45.7	3,284.0	0.74	0.41	-0.61
WP#3 (D-15-22NHZ)									
9,968.0	92.90	181.70	7,045.1	-3,312.1	44.8	3,312.4	0.74	0.41	-0.61
10,015.0	92.00	179.70	7,043.1	-3,359.1	44.3	3,359.4	4.66	-1.91	-4.26
10,063.0	92.20	179.20	7,041.3	-3,407.1	44.7	3,407.4	1.12	0.42	-1.04
10,110.0	91.00	178.20	7,040.0	-3,454.0	45.8	3,454.3	3.32	-2.55	-2.13
10,158.0	91.50	177.80	7,039.0	-3,502.0	47.5	3,502.3	1.33	1.04	-0.83
10,205.0	90.90	177.80	7,038.0	-3,548.9	49.3	3,549.3	1.28	-1.28	0.00
10,253.0	89.30	177.60	7,037.9	-3,596.9	51.2	3,597.3	3.36	-3.33	-0.42
10,300.0	88.40	177.80	7,038.9	-3,643.9	53.1	3,644.2	1.96	-1.91	0.43
10,349.0	89.30	178.20	7,039.8	-3,692.8	54.8	3,693.2	2.01	1.84	0.82
10,396.0	88.80	176.60	7,040.6	-3,739.8	56.9	3,740.2	3.57	-1.06	-3.40
10,439.4	87.62	174.79	7,042.0	-3,783.0	60.2	3,783.5	4.97	-2.71	-4.17
WP#4 (D-15-22NHZ)									
10,444.0	87.50	174.60	7,042.2	-3,787.6	60.6	3,788.0	4.97	-2.71	-4.17
10,491.0	88.80	177.10	7,043.7	-3,834.4	64.0	3,834.9	5.99	2.77	5.32
10,539.0	90.00	179.00	7,044.2	-3,882.4	65.6	3,882.9	4.68	2.50	3.96
10,586.0	90.70	179.00	7,043.9	-3,929.4	66.4	3,929.9	1.49	1.49	0.00
10,634.0	91.10	180.10	7,043.2	-3,977.4	66.8	3,977.9	2.44	0.83	2.29
10,681.0	90.70	179.90	7,042.4	-4,024.4	66.8	4,024.9	0.95	-0.85	-0.43
10,730.0	91.40	179.70	7,041.5	-4,073.4	67.0	4,073.9	1.49	1.43	-0.41
10,777.0	90.00	181.00	7,040.9	-4,120.4	66.7	4,120.9	4.06	-2.98	2.77
10,825.0	88.80	181.70	7,041.4	-4,168.3	65.6	4,168.8	2.89	-2.50	1.46
10,872.0	89.20	182.40	7,042.3	-4,215.3	63.9	4,215.8	1.72	0.85	1.49
10,920.0	89.90	182.20	7,042.6	-4,263.3	62.0	4,263.7	1.52	1.46	-0.42
10,967.0	90.70	182.20	7,042.4	-4,310.2	60.2	4,310.6	1.70	1.70	0.00
11,015.0	89.70	182.20	7,042.2	-4,358.2	58.3	4,358.6	2.08	-2.08	0.00
11,107.0	89.60	181.70	7,042.8	-4,450.1	55.2	4,450.5	0.55	-0.11	-0.54
11,162.0	89.70	181.70	7,043.1	-4,505.1	53.6	4,505.4	0.18	0.18	0.00

<b>Company:</b>	Synergy Resources	<b>Local Co-ordinate Reference:</b>	Well SRC Gies D-15-22NHZ
<b>Project:</b>	SEC.15-T7N-R65W	<b>TVD Reference:</b>	WELL @ 4852.0ft (RKB - 14')
<b>Site:</b>	SRC Gies Pad Sec.15-T7N-R65W	<b>MD Reference:</b>	WELL @ 4852.0ft (RKB - 14')
<b>Well:</b>	SRC Gies D-15-22NHZ	<b>North Reference:</b>	True
<b>Wellbore:</b>	Wellbore #1	<b>Survey Calculation Method:</b>	Minimum Curvature
<b>Design:</b>	Wellbore #1	<b>Database:</b>	Landmark

<b>Survey</b>									
Measured Depth (ft)	Inclination (°)	Azimuth (°)	Vertical Depth (ft)	+N/-S (ft)	+E/-W (ft)	Vertical Section (ft)	Dogleg Rate (°/100ft)	Build Rate (°/100ft)	Turn Rate (°/100ft)
BHL 470'FSL & 984'FEL, Sec.22									

<b>Casing Points</b>				
Measured Depth (ft)	Vertical Depth (ft)	Name	Casing Diameter (")	Hole Diameter (")
7,245.0	6,988.4	7"	7	7-1/2

Checked By: \_\_\_\_\_ Approved By: \_\_\_\_\_ Date: \_\_\_\_\_