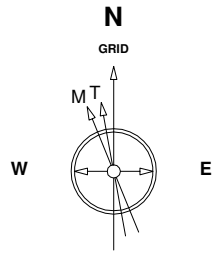


Great Western Operating Company, LLC

Location Colorado
Field Wattenberg
Installation Burr

Slot Slot #7
Well Burr FD 23-379HN
Wellbore Burr FD 23-379HN (PWB)

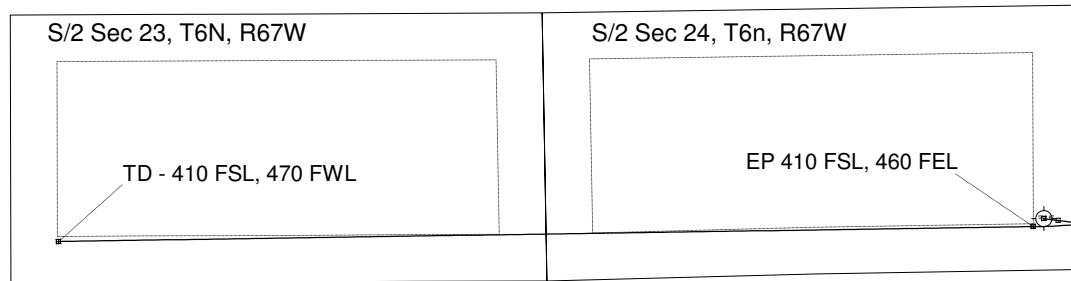
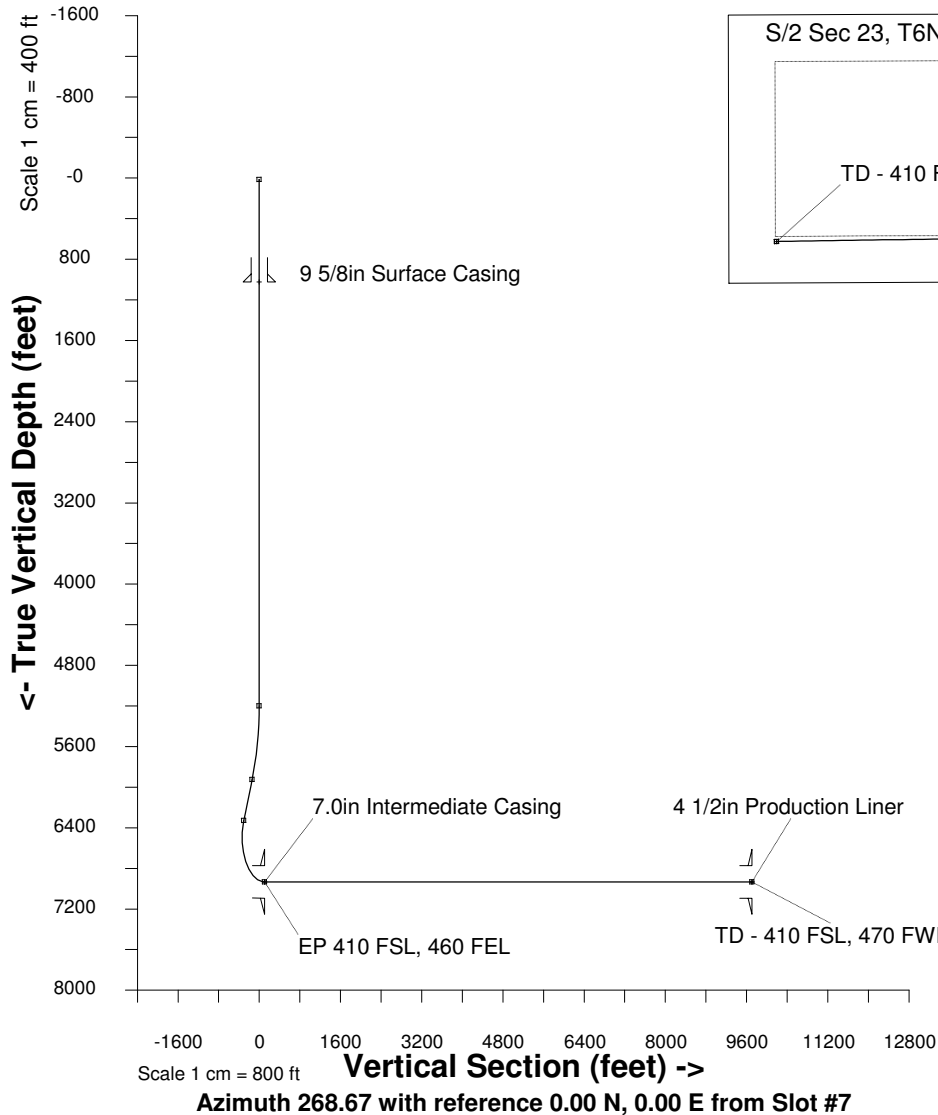


20-Aug-2014
 IGRF Model [1900.0-2015.0] Dip: -29.73 deg Field: 32223.6 nT
 Magnetic North is 4.46 deg West of True North
 GRID North is 0.43 deg East of True North
 To correct azimuth from True to GRID subtract 0.43 deg
 To correct azimuth from Magnetic to GRID subtract 4.89 deg

Scale 1 cm = 400 ft

East (feet) ->

-12000 -11200 -10400 -9600 -8800 -8000 -7200 -6400 -5600 -4800 -4000 -3200 -2400 -1600 -800 0 800 1600



WELL PROFILE DATA

Point	MD	Inc	Azi	TVD	North	East	deg/100ft	V. Sect
Tie on	16.20	0.00	0.00	16.20	0.00	0.00	0.00	-0.00
KOP	5200.00	0.00	0.00	5200.00	0.00	0.00	0.00	-0.00
End of Build	5942.45	22.27	97.11	5923.89	-17.64	141.41	3.00	-140.96
End of Hold	6378.93	22.27	97.11	6327.81	-38.11	305.58	0.00	-304.61
Target EP 410 FSL, 460	7240.83	90.00	269.13	6933.00	-78.73	-102.36	13.00	104.16
T.D. & Target TD - 410	16845.14	90.00	269.13	6933.00	-224.75	-9705.56	0.00	9708.16

Created by admin
 Date plotted 21-Aug-2014
 Plot reference is Burr FD 23-379HN (PWB).
 Ref wellpath is Burr FD 23-279HN (PWP#1).
 Coordinates are in feet reference Slot #7.
 True Vertical Depths are reference Rig Datum.
 Measured Depths are reference Rig Datum.
 Rig Datum: Planned Datum #1
 Rig Datum to Mean Sea Level: 4759.00 ft.
 Plot North is aligned to GRID North.