

[illegible]

NOTES:
BH LOCATION PROVIDED BY CLIENT.
LAND SURFACE USE-DRYLAND CROP
SEE ATTACHED MAP FOR ADDITIONAL
IMPROVEMENTS WITHIN 500'.







PDOP= 1.4
GPS OPERATOR: BEN HARDENBERGH

SURFACE LOCATION
GROUND ELEVATION= 5052'
NAD83
LATITUDE= 40.043282°
LONGITUDE= 104.650766°

LANDING POINT LOCATION
NAD83
LATITUDE= 40.045436°
LONGITUDE= 104.652020°

BOTTOM HOLE LOCATION
NAD83
LATITUDE= 40.057474°
LONGITUDE= 104.652062°

LEGEND

-  = EXISTING MONUMENT  = BOTTOM HOLE
 = CALCULATED POSITION  = LANDING POINT
 = PROPOSED WELL LP = LANDING POINT
 = EXISTING WELL BH = BOTTOM HOLE

WELL LONG 22-15-1CH TO BE
LOCATED 324' FNL AND 2463' FWL

I, JACOB S. FRISCH, A LICENSED PROFESSIONAL LAND SURVEYOR IN THE STATE OF COLORADO DO HEREBY CERTIFY TO **EDGE ENERGY**, THAT THE SURVEY AND WELL LOCATION CERTIFICATE SHOWN HEREON WERE DONE BY ME OR UNDER MY DIRECT SUPERVISION AND THAT THE DRAWING SHOWN HEREON ACCURATELY DEPICTS THE PROPOSED LOCATION OF THE WELL. THIS CERTIFICATE DOES NOT REPRESENT A LAND SURVEY PLAT OR IMPROVEMENT SURVEY PLAT AS DEFINED BY C.R.S. 38-51-102 AND CANNOT BE RELIED UPON TO DETERMINE OWNERSHIP.

NOTES:

1. THIS FIELD SURVEY CONFORMS TO THE MINIMUM STANDARDS SET BY THE C.O.G.C.C., RULE NO. 215
2. BEARINGS ARE BASED ON THE ASSUMPTION THAT THE NORTH LINE OF THE NORTHWEST QUARTER OF SECTION 22, BEARS N89°29'57"E BETWEEN THE MONUMENTS SHOWN HEREON.
3. GRID DISTANCES ARE SHOWN, AS GPS MEASURED IN THE FIELD, WITH TIES TO WELLS MEASURED PERPENDICULAR TO SECTION LINES. TO GET GROUND DISTANCES MULTIPLY THE SHOWN DISTANCE BY 1.000270914.
4. ELEVATIONS SHOWN ARE NAVD 88, AS DERIVED BY GPS OBSERVATIONS.
5. FIELD VERIFICATION OF MONUMENTS COMPLETED ON DECEMBER 08, 2014. WELL STAKING COMPLETED ON DECEMBER 09, 2014.

NOTICE: ACCORDING TO COLORADO LAW YOU MUST COMMENCE ANY LEGAL ACTION BASED UPON ANY DEFECT IN THIS SURVEY WITHIN THREE YEARS AFTER YOU FIRST DISCOVER SUCH DEFECT. IN NO EVENT MAY ANY ACTION BASED UPON ANY DEFECT IN THIS SURVEY BE COMMENCED MORE THAN TEN YEARS FROM THIS SAID DATE OF THIS CERTIFICATION SHOWN HEREON.

JACOB S. FRISCH, PLS-281495 38149
DATE: 03-24-15 JOB NO. B14.BBH.0008
FOR AND ON BEHALF OF R.F.S., LLC



SHEET 1 OF 2

PREPARED BY:



FIELD DATE:
12-09-14

DRAWING DATE:
03-23-15

BY:
KAD

WELL NAME:

LONG 22-15-1CH

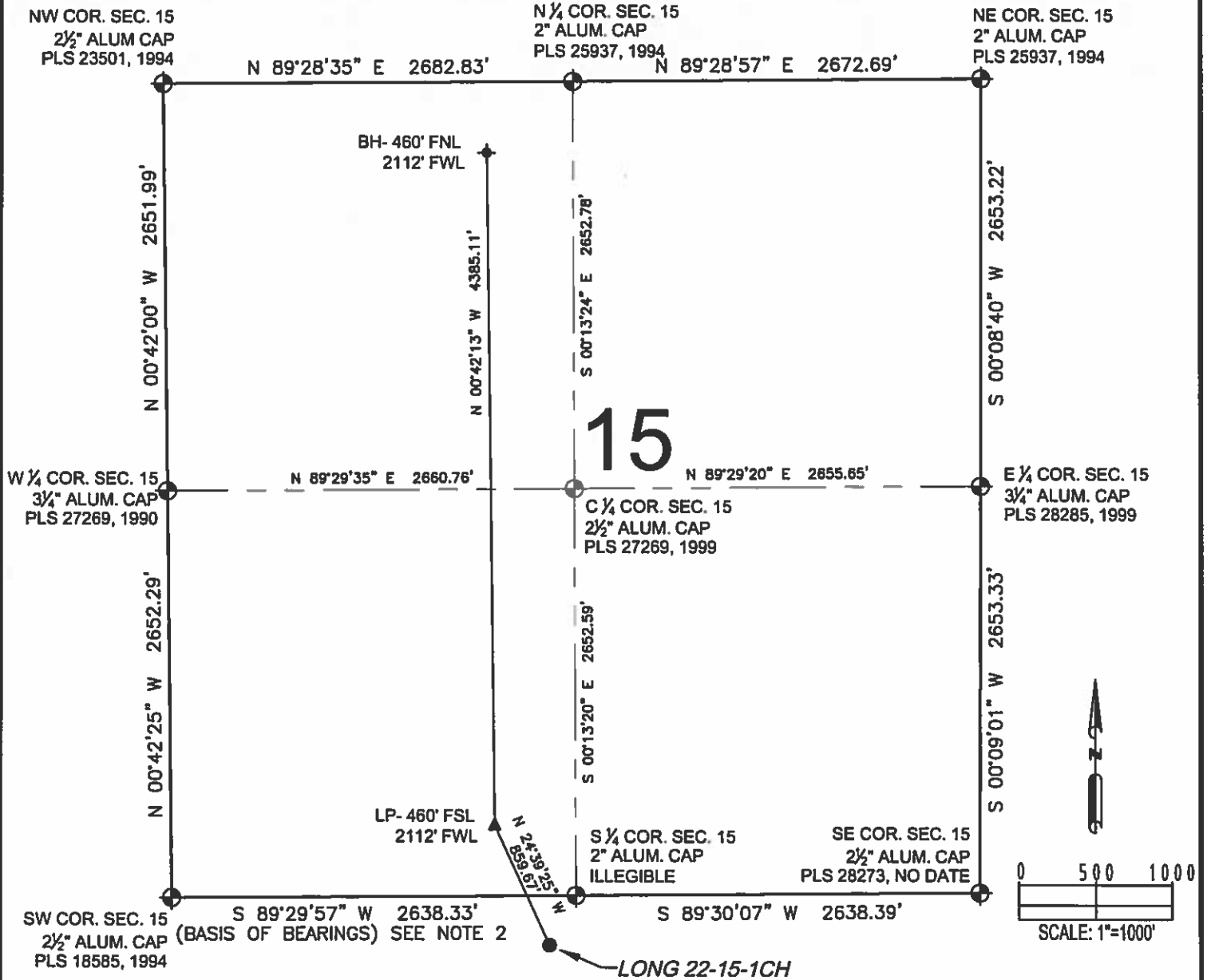
SURFACE LOCATION:

NE 1/4 NW 1/4, SEC. 22, T1N, R65W, 6TH P.M.
WELD COUNTY, COLORADO

PREPARED FOR:

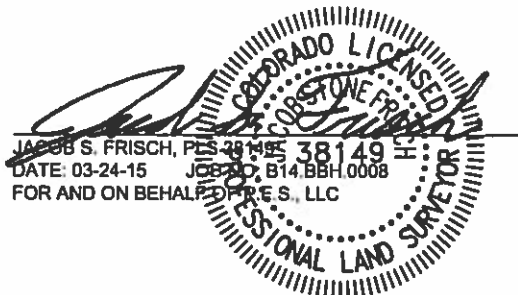
EDGE
ENERGY

LONG 22-15-1CH WELL LOCATION CERTIFICATE



LEGEND

- = EXISTING MONUMENT
- = CALCULATED POSITION
- = PROPOSED WELL
- ◆ = EXISTING WELL
- ▲ = BOTTOM HOLE
- ▲ = LANDING POINT
- LP = LANDING POINT
- BH = BOTTOM HOLE



SHEET 2 OF 2

PREPARED BY:



FIELD DATE:
12-09-14

DRAWING DATE:
03-23-15

BY:
KAD

CHECKED BY:
TJN

WELL NAME:

LONG 22-15-1CH

SURFACE LOCATION:

NE 1/4 NW 1/4, SEC. 22, T1N, R65W, 6TH P.M.
WELD COUNTY, COLORADO

PREPARED FOR:

EDGE
ENERGY