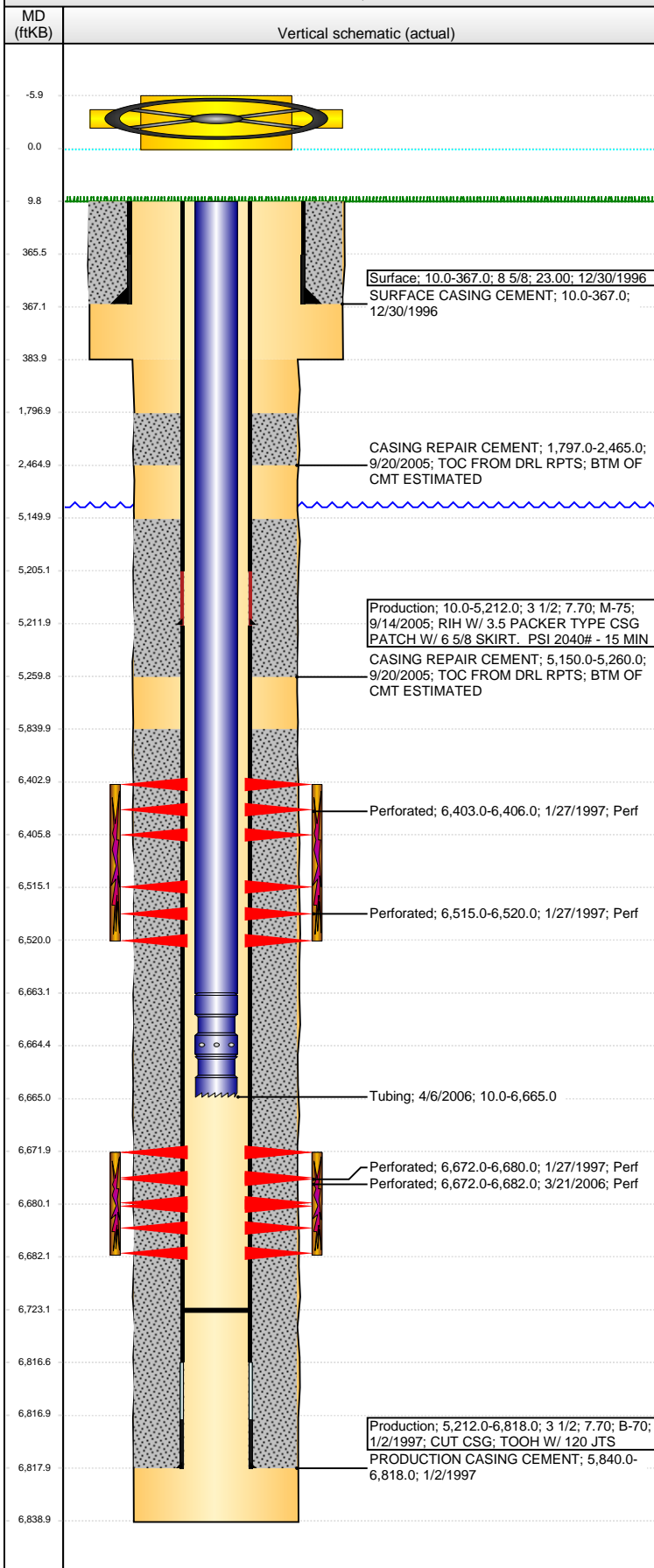


**Well Name: DKW GREEN STATE BB18-08**

VERTICAL - ORIGINAL HOLE, 4/20/2015 3:56:17 PM



## Well Header

API	Business Unit	District	Well Config
05-123-19280	DJ BASIN	15	VERTICAL
Original KB Elevation (ft)	KB - GL / MSL (ftKB)	Spud Date	P & A Date
4,642.00	10.00	12/30/1996	
Comment			
csg patch @ 5212 09/05, 40sx + 241 sx cmt 9/05			
Directions To Well			

## Congressional Location

Quarter 1	Quarter 2	Quarter 3	Quarter 4	Section	Township	Twtnshp N...	Range	Rng E/W Dir
		SE	NE	18	5	N	63	W

## Bottom Hole Location

North-South Distance (ft)	From N or S Line	East-West Distance (ft)	From E or W Line

## Plug Back Total Depths

Date	Depth (ftKB)	Method	Com
1/2/1997	6,774.0	CASING TALLY	FLOAT SHOE ON CASING TALLY
1/10/1997	6,728.0	CASED HOLE LOG	DEPTH LOGGER ON CBL
4/6/2006	6,723.0	TAG	TAG TO LAND TUBING

## Wellbore Sections

Section Des	Size (in)	Act Top, MD (ftKB)	Act Btm, MD (ftKB)
SURFACE	12 1/4	10.0	384.0
PRODUCTION	7 7/8	384.0	6,839.0

## Zone Statuses

Zone Name	Status Date	Status	Fluid Type	Job
NIOBRARA	2/4/1997	PR		DRILLING/COMPLETI...
CODELL	2/4/1997	PR		DRILLING/COMPLETI...
CODELL	4/12/2006	PR		RE-FRAC, 3/18/2006 0...

## Casing Strings

Casing Description	Run Date	OD (in)	Wt/Len (l...	Grade	Top, MD (ft...	MD (ftKB)
Surface	12/30/1996	8 5/8	23.00		10.0	367.0

## Production, 5,212.0ftKB

Casing Description	Run Date	OD (in)	Wt/Len (l...	Grade	Top, MD (ft...	MD (ftKB)
Production	9/14/2005	3 1/2	7.70	M-75	10.0	5,212.0

## Production, 6,818.0ftKB

Casing Description	Run Date	OD (in)	Wt/Len (l...	Grade	Top, MD (ft...	MD (ftKB)
Production	1/2/1997	3 1/2	7.70	B-70	10.0	6,818.0

## Cement

Description	Top Depth (ftKB)	Bottom Depth (ftKB)
SURFACE CASING CEMENT	10.0	367.0
PRODUCTION CASING CEMENT	5,840.0	6,818.0
CASING REPAIR CEMENT	1,797.0	2,465.0
CASING REPAIR CEMENT	5,150.0	5,260.0

## Tubing Strings

Tubing Description	Run Date	String...	ID (in)	Wt (lb/ft)	Grade	Len (ft)	Set De...
Tubing	4/6/2006	2 1/16	1.751	3.25	J-55	6,655.00	

## Tubing Components

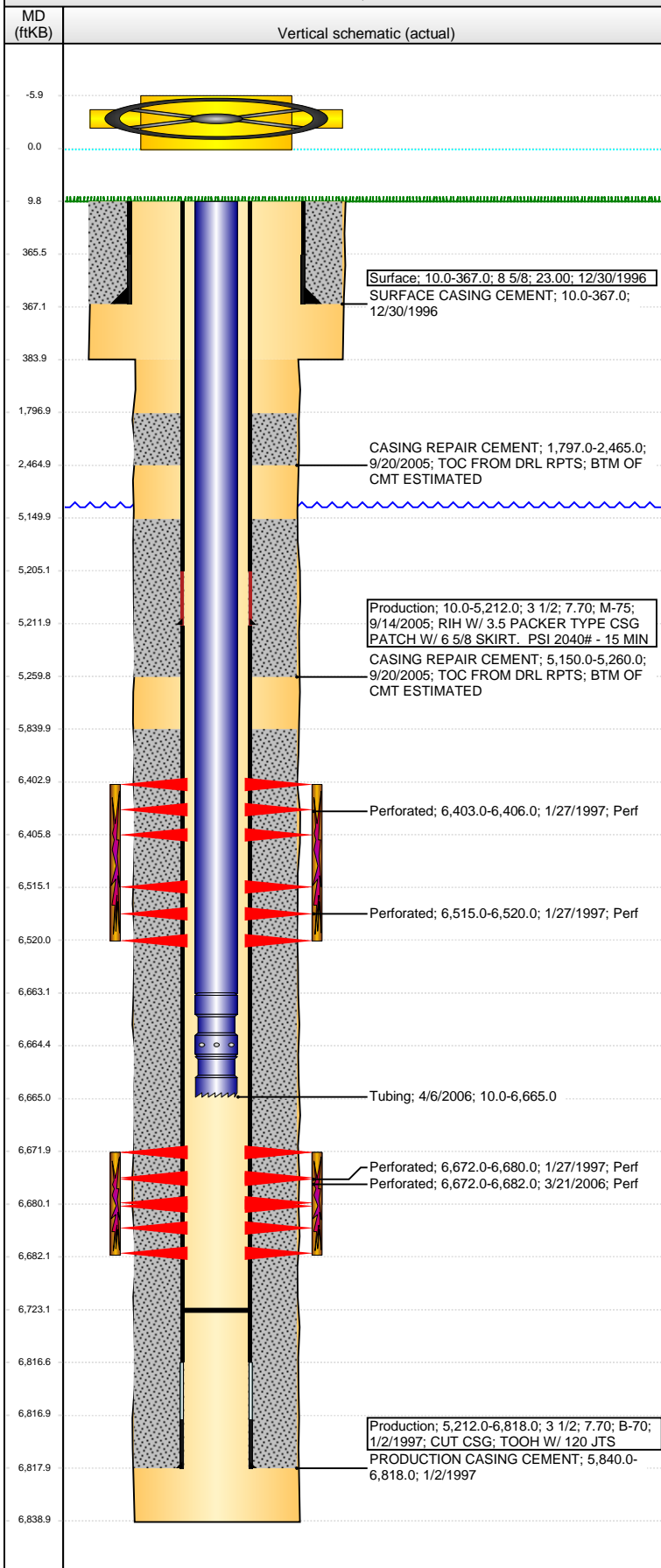
Item Des	OD (in)	Wt (lb/ft)	Grade	Jts	Len (ft)	Btm (ftKB)	Btm (TVD) (ftKB)
Tubing	2 1/16	3.25	J-55	210	6,652.90	6,662.9	
Pump Seating Nipple	2 1/16				1.60	6,664.5	
Notched collar	2 1/16				0.50	6,665.0	

## Perforation Data

Zone	Bnch/St g	Entered Shot Total	Top (ftKB)	Btm (ftKB)	Date
NIOBRARA, ORIGINAL HOLE	A	3	6,403.00	6,406.00	1/27/1997
NIOBRARA, ORIGINAL HOLE	B	5	6,515.00	6,520.00	1/27/1997
CODELL, ORIGINAL HOLE		32	6,672.00	6,680.00	1/27/1997
CODELL, ORIGINAL HOLE		40	6,672.00	6,682.00	3/21/2006

**Well Name: DKW GREEN STATE BB18-08**

VERTICAL - ORIGINAL HOLE, 4/20/2015 3:56:19 PM



## Stimulations & Treatments

Date	Zone	Primary Job Type
1/29/1997	NIOBARRA, ORIGINAL HOLE	DRILLING/COMPLETION - ORIGINAL
Technical Result	Tech Result Details	Tech Result Note

Comment

Date	Zone	Primary Job Type
1/29/1997	CODELL, ORIGINAL HOLE	DRILLING/COMPLETION - ORIGINAL
Technical Result	Tech Result Details	Tech Result Note

Comment

Date	Zone	Primary Job Type
4/3/2006	CODELL, ORIGINAL HOLE	RE-FRAC
Technical Result	Tech Result Details	Tech Result Note

Comment

## Other In Hole

Run Date	Des	OD (in)	Top (ftKB)	Btm (ftKB)

## Logs

Date	Type	Top, MD (ftKB)	Btm, MD (ftKB)
1/2/1997	COMPENSATED DENSITY	4,100.0	6,821.0
1/2/1997	INDUCTION	359.0	6,839.0
1/10/1997	CEMENT BOND	5,700.0	6,724.0
12/31/2014	GYRO	10.0	6,650.0