

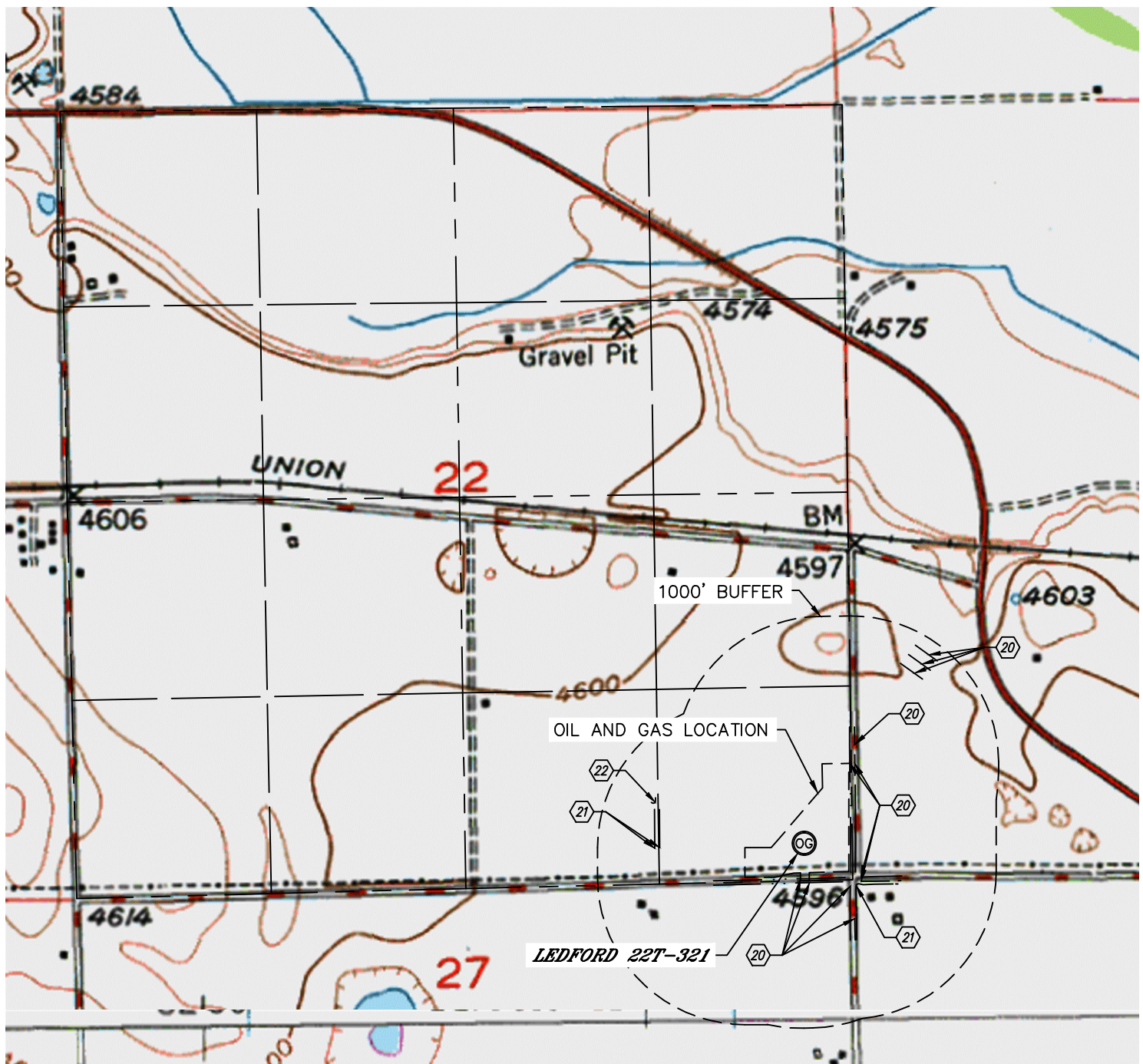


Lat40°, Inc. 1635 Foxtrail Drive, Suite 325 Loveland, CO 970-776-3321

HYDROLOGY MAP

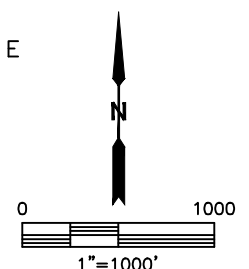
LEDFORD 22Y-HZ PAD

SECTION: 22
TOWNSHIP: 5N
RANGE: 64W



DISTANCES MEASURED FROM THE EDGE OF OIL AND GAS LOCATION.

- ②① BARROW DITCH 9' W (INSIDE LOCATION), 14' N (INSIDE LOCATION), 14' S, 25' E
89', 100', 107' & 320' SE, 130', 746', 827' & 905' NE
- ②① DITCH 102' SE, 578' & 612' W
- ②② POND ' NW



NEAREST DOWN GRADIENT SURFACE WATER: BARROW DITCH 9' W (INSIDE LOCATION)

DATE: 1/12/2015
PROJECT#: 2013182