

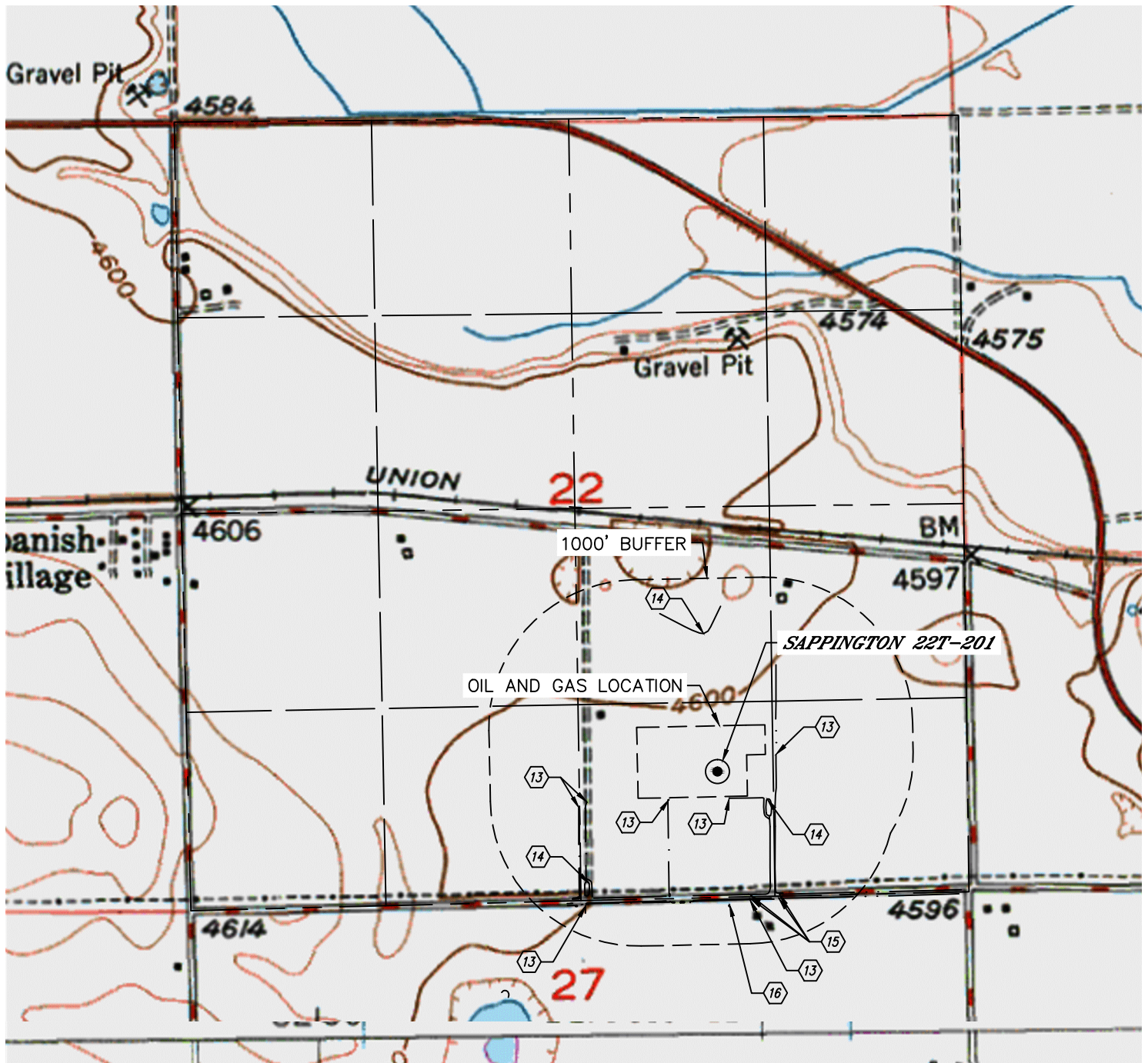


Lat40°, Inc. 6250 W. 10th Street, Unit 2, Greeley, CO 970-515-5294

# HYDROLOGY MAP

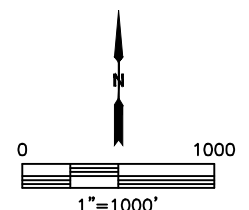
SAPPINGTON 5N64W22D PAD

SECTION: 22  
TOWNSHIP: 5N  
RANGE: 64W  
6TH. P.M.  
WELD COUNTY, CO



DISTANCES MEASURED FROM THE EDGE OF THE OIL AND GAS LOCATION

- ⑬ DITCH 12', 13' & 701' S, 71' E, 347', 403' & 810' SW
- ⑭ POND 134' SE, 626' N, 664' SW
- ⑮ BARROW DITCH 666' & 694' S, 698' & 723' SE
- ⑯ LOW AREA 733' S



NEAREST DOWN GRADIENT SURFACE WATER: DITCH 12' S

DATE: 3/4/2015  
PROJECT#: 2014077