



Western Water & Land, Inc.

May 26, 2014

Mr. Brandon Danforth  
Environmental Specialist  
WPX Energy Rocky Mountain LLC  
1058 County Road 215  
Parachute, Colorado 81635

**RE: PA 24-32 Drill Pad Baseline Water Quality Evaluation**

Dear Mr. Danforth,

Western Water & Land, Inc. (WWL) has completed a hydrologic Water Source evaluation for the WPX Energy Rocky Mountain LLC (WPX) PA 24-32 Drill Pad in accordance with Colorado Oil and Gas Conservation Commission (COGCC) Rule 609. Drill Pad PA 24-32 is located in SE1/4, SW1/4, Section 32, Township 6 S, Range 95 W 6<sup>th</sup> P.M. The evaluation considered all Water Sources as defined in Rule 609 within a 0.5-mile radius of the referenced drill pad. Water Sources located on the basis of section quarters were included in the evaluation if any portion of the section quarter(s) lies within the 0.5-mile radius area. A preliminary screening of the Water Sources was completed to identify the sources considered to be potentially available for baseline sampling pending results of the owner questionnaire, consent of the structure owners, and field inspections to verify sampling feasibility. Each potentially available Water Source was then evaluated to identify the preferred sources for the baseline program. If the resulting number of potentially available sources was four or less, all of the sources were included in the list of preferred sources. If more than four sources were potentially available, the sources were prioritized based on WWL's hydrologic knowledge of the region, general hydrologic rationale, and in accordance with the guidelines specified in Rule 609.

**Water Sources**

Water Sources as defined in Rule 609 include Colorado Division of Water Resources (DWR) registered water wells (water wells with existing valid well permits), permitted or adjudicated springs, and monitoring wells installed for baseline sampling and monitoring under COGCC Rules 318A.e(4), 608, or 609. Water Sources located within a 0.5-mile radius of the PA 24-32 Drill Pad are shown in Figure 1. Monitoring Hole permits (MH designation), and abandoned, expired, canceled, or denied permits of any type are not shown in Figure 1 unless otherwise described in this report. Similarly, water right decrees that are shown as having a non-existent or unusable structure in the state database may not be shown as a viable water source in Figure 1. No Water Sources were identified to fall within the 0.5-mile radius area of Drill Pad PA 24-32.

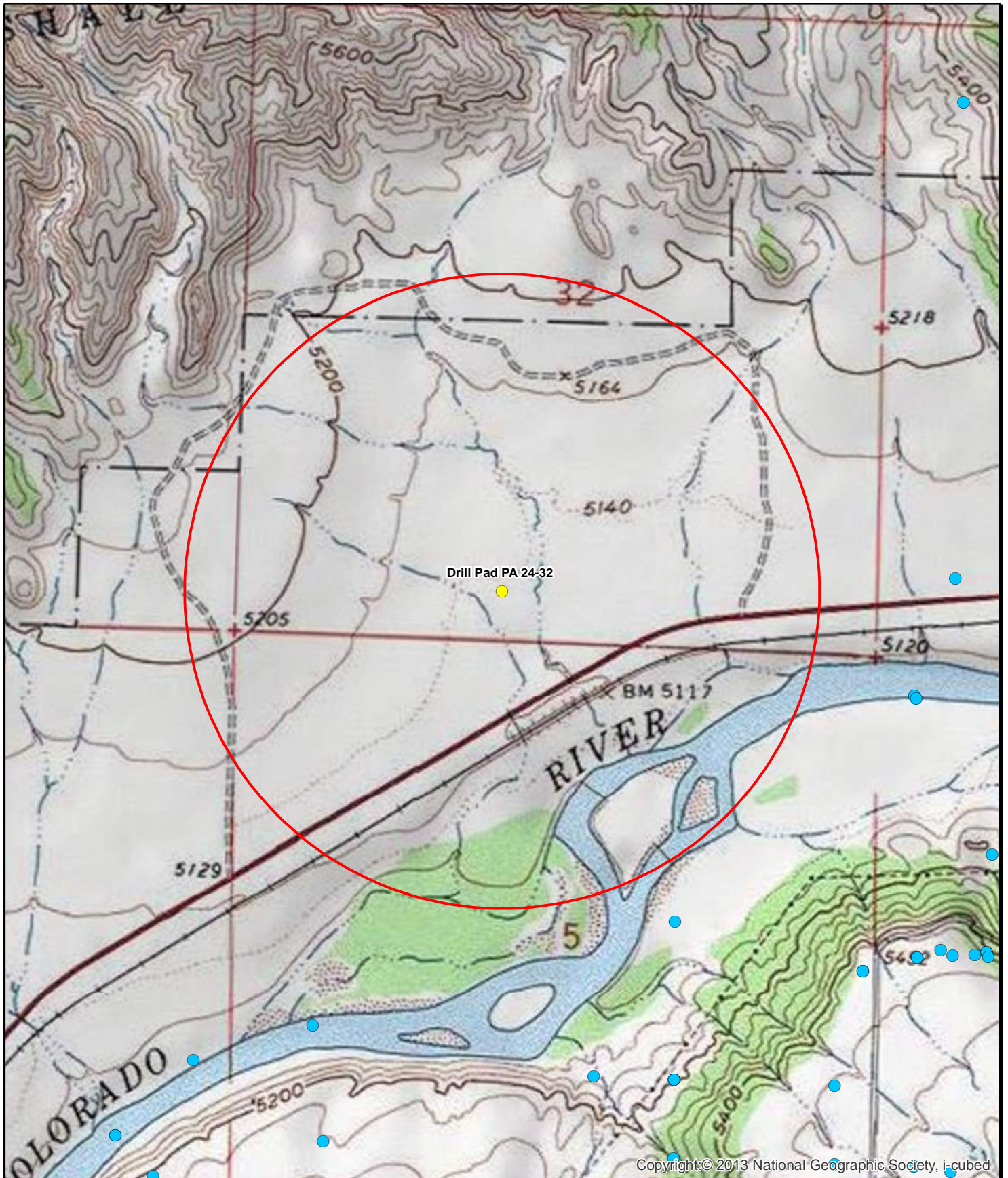
If you have any questions or concerns, please contact me at (970) 242-0170.

Mr. Brandon Danforth  
May 26, 2014  
Page 2

Sincerely,

A handwritten signature in black ink, appearing to read "Bruce D. Smith". The signature is written in a cursive style with a large initial "B" and a distinct "D" and "S".

Bruce D. Smith  
Principal Hydrogeologist  
WESTERN WATER & LAND, INC.



Copyright © 2013 National Geographic Society, i-cubed

**Figure 1: Drill Pad PA 24-32  
0.5 Mile Radius Water Source Evaluation  
SE1/4, SW1/4, S32, T6S, R95W, 6 PM**

**Legend**

- Decree
- Constructed well
- Outside permits or decrees
- Drill Pad PA 24-32
- 0.5-Mile Radius Evaluation Area
- Completion Status Unknown

Feet

1,000 500 0 1,000

1:13,000

↑ N

Garfield County, Colorado  
WPX Energy Rocky Mountain LLC  
Basemap Source: Esri ArcGIS Online



Western Water & Land, Inc.  
Applications in Earth Science