

T8N, R81W, 6th P.M.

EE3 LLC

Multi-Well Plan
GRIZZLY 3-36H and PETERSON RIDGE 6-36H
as shown in Sections 25 and 36, T8N,
R81W, 6th P.M., Jackson County, Colorado.

BASIS OF BEARINGS:

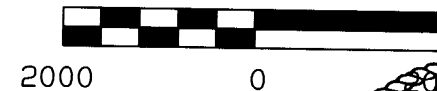
US STATE PLANE 1983
CO NORTH 0501 GRID

BASIS OF ELEVATION

SPOT ELEVATION AT THE NE CORNER OF SECTION 36,
T8N, R81W, 6TH PM, TAKEN FROM THE DELANEY BUTTE
QUADRANGLE, USGS 7.5 MIN QUAD (TOPOGRAPHIC MAP)
WITH SAID ELEVATION MARKED AS BEING 8121 FEET.

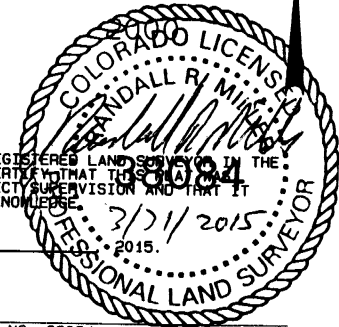
SURFACE USE
GRAZING/RANGELAND

GRAPHIC SCALE 1"=2000'



I RANDALL R. MILLER, BEING A REGISTERED LAND SURVEYOR IN THE
STATE OF COLORADO, DO HEREBY CERTIFY THAT THIS SURVEY
MADE BY ME AND/OR UNDER MY DIRECT SUPERVISION AND THAT IT
IS ACCURATE TO THE BEST OF MY KNOWLEDGE.

DATED THIS _____ DAY OF _____



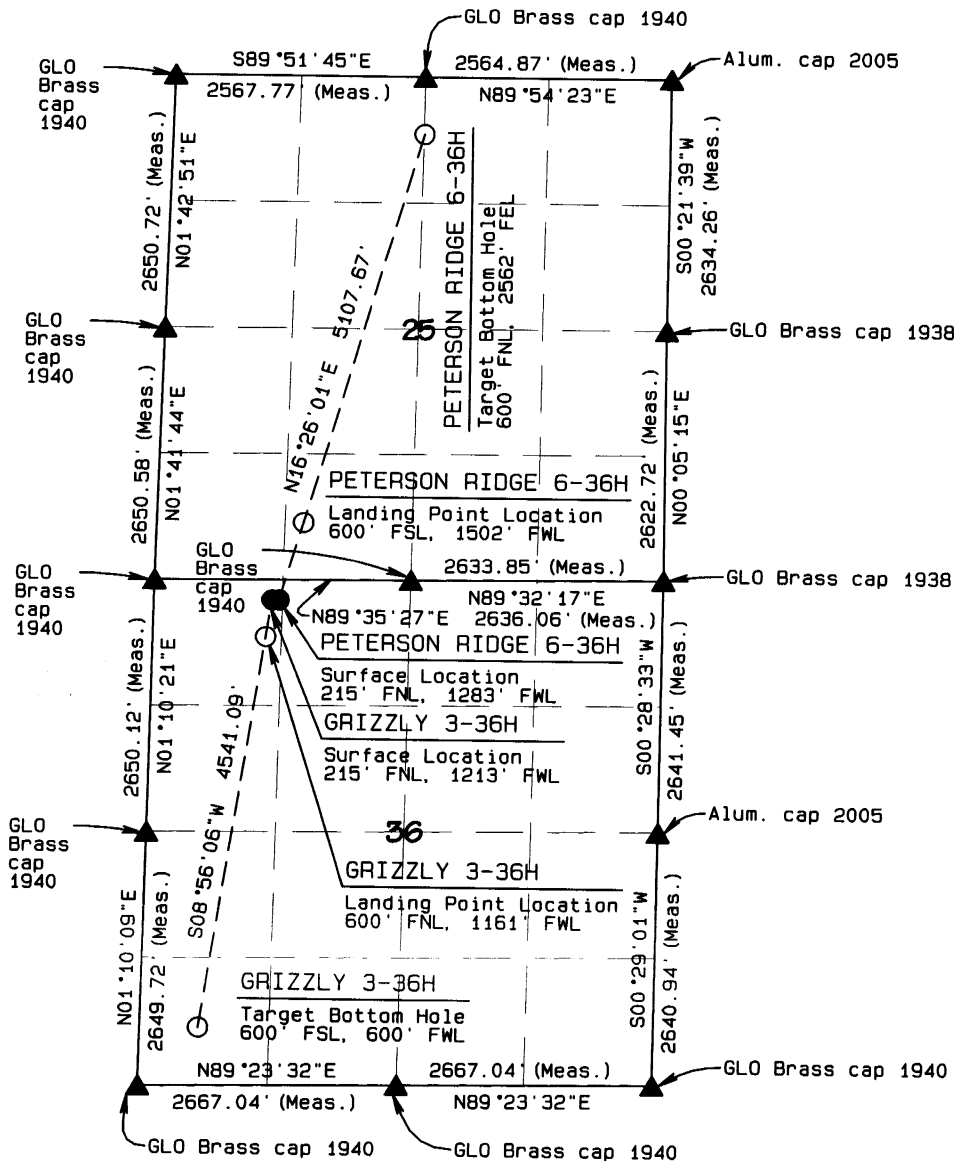
RANDALL R. MILLER, COLORADO PLS NO. 38084

GRIZZLY 3-36H	NAD 83 (SURFACE LOCATION)
	LATITUDE=40.628725 °N LONGITUDE=106.439683 °W PDOP=0.836
NAD 83 (TARGET BOTTOM HOLE)	NAD 83 (LANDING POINT LOCATION)
LATITUDE=40.616396 °N LONGITUDE=106.442051 °W	LATITUDE=40.627665 °N LONGITUDE=106.439887 °W

NORTH PARK ENGINEERING & CONSULTING, INC.

P.O. BOX 395
WALDEN, CO 80480
(970) 723-3725

DATE OF FIELD WORK: 11-03-2014 DRAWING COMPLETION: 03-31-2015
SURVEYED BY: ARM DRAWN BY: TKH CHECKED BY: ARM



LEGEND

FOUND CORNER ▲
PROPOSED WELL ●
PROPOSED BHL/LPL ○

PETERSON RIDGE 6-36H	NAD 83 (SURFACE LOCATION)
	LATITUDE=40.628726 °N LONGITUDE=106.439431 °W PDOP=0.990
NAD 83 (TARGET BOTTOM HOLE)	NAD 83 (LANDING POINT LOCATION)
LATITUDE=40.642209 °N LONGITUDE=106.434414 °W	LATITUDE=40.630975 °N LONGITUDE=106.438594 °W