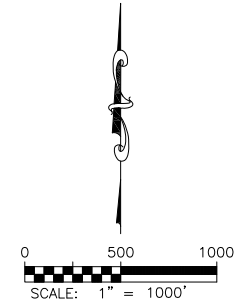
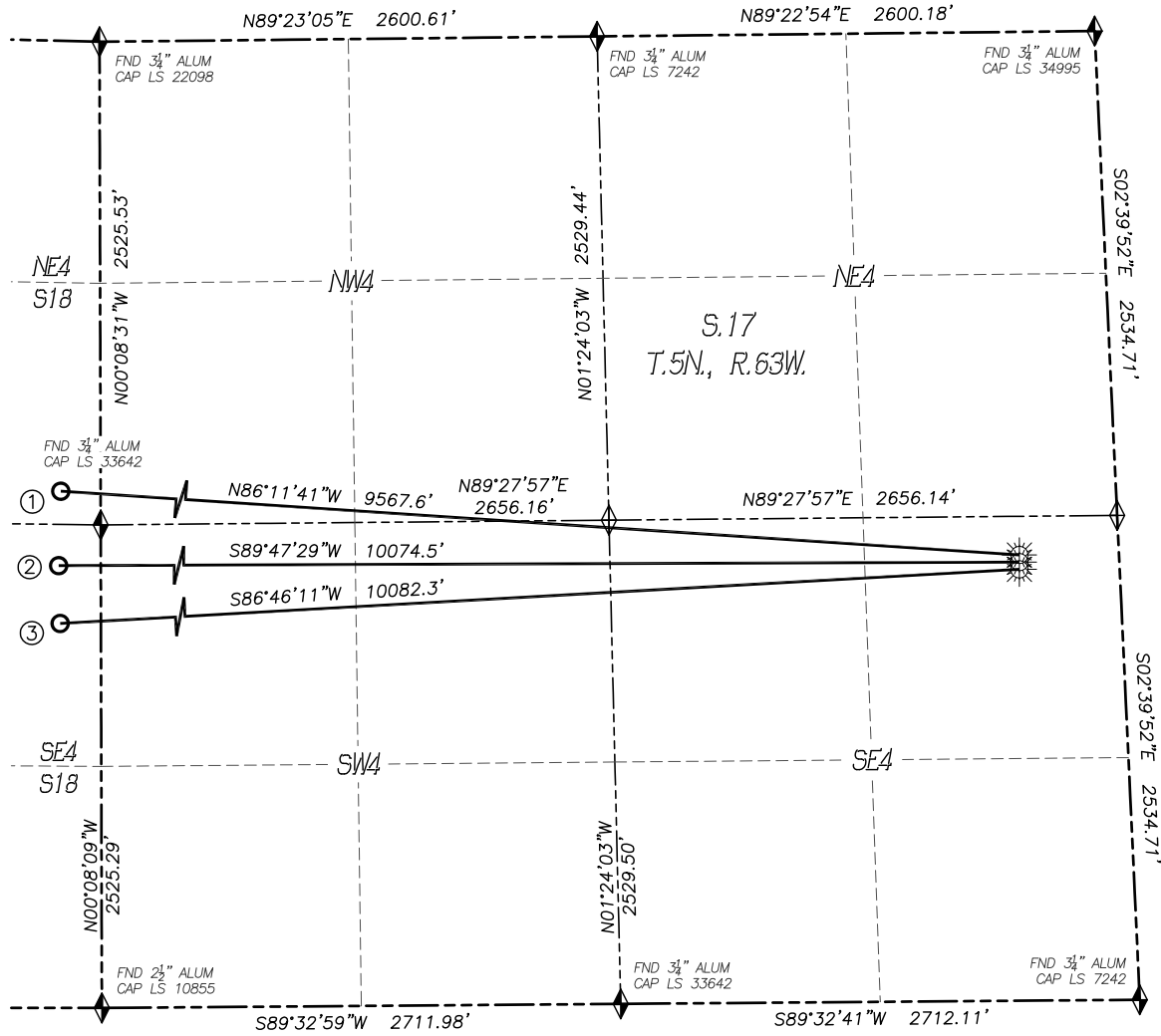


# MULTI WELL PLAN

## 70 RANCH STATE BB18-655 PAD

SECTION: 17  
TOWNSHIP: 5N  
RANGE: 63W



- LEGEND**
- FOUND MONUMENT AS DESCRIBED
  - PROPOSED WELL
  - EXISTING WELL
  - BOTTOM HOLE
  - ABANDONED WELL
  - CALCULATED POSITION

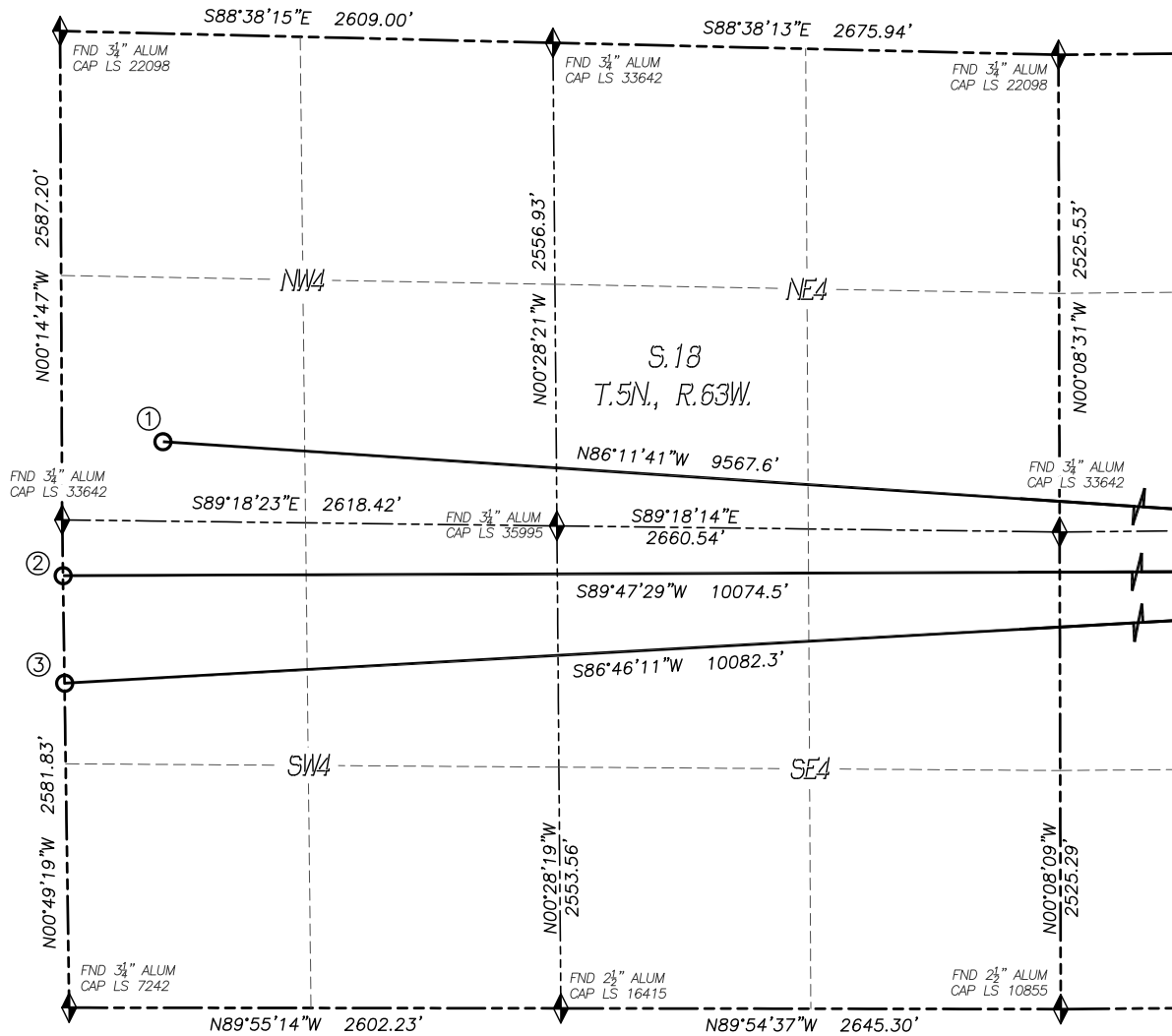
Bottom Hole					
Slot	Well Name	Footage		Latitude	Longitude
1	70 RANCH STATE BB18-655	2160' FNL	535' FWL	N40.40019°	W104.48718°
2	70 RANCH STATE BB18-647	2286' FSL	1' FWL	N40.39824°	W104.48908°
3	70 RANCH STATE BB18-634	1717' FSL	1' FWL	N40.39668°	W104.48905°

\\Survey\0810220\Drawings\BB18-655\70 Ranch State BB18-655 MWP.dwg

# MULTI WELL PLAN

## 70 RANCH STATE BB18-655 PAD

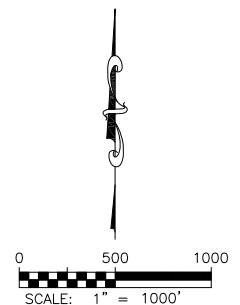
SECTION: 17  
TOWNSHIP: 5N  
RANGE: 63W



Bottom Hole					
Slot	Well Name	Footage		Latitude	Longitude
1	70 RANCH STATE BB18-655	2160' FNL	535' FWL	N40.40019°	W104.48718°
2	70 RANCH STATE BB18-647	2286' FSL	1' FWL	N40.39824°	W104.48908°
3	70 RANCH STATE BB18-634	1717' FSL	1' FWL	N40.39668°	W104.48905°

LEGEND

- FOUND MONUMENT AS DESCRIBED
- PROPOSED WELL
- EXISTING WELL
- BOTTOM HOLE
- ABANDONED WELL
- CALCULATED POSITION



MULTI WELL PLAN  
70 RANCH STATE BB18-655 PAD

SECTION: 17  
TOWNSHIP: 5N  
RANGE: 63W

