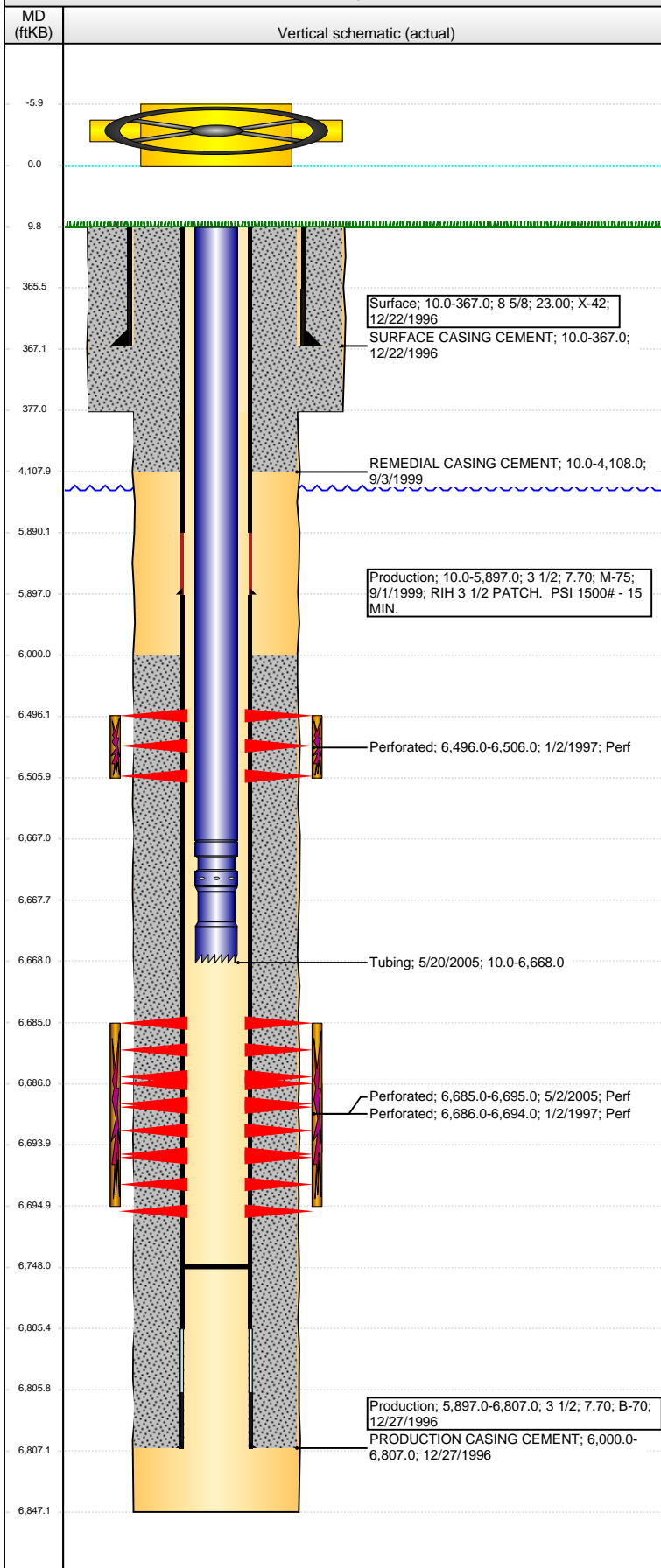


Well Name: DKW GREEN STATE BB18-02

VERTICAL - ORIGINAL HOLE, 4/20/2015 12:15:48 PM



Well Header

API	Business Unit	District	Well Config
05-123-19278	DJ BASIN	15	VERTICAL
Original KB Elevation (ft)	KB - GL / MSL (ftKB)	Spud Date	P & A Date
4,647.00	10.00	12/21/1996	

Comment

CSG RPR 9/99 PATCH @ 5897'

TD DISCREPANCY: DRL RPTS & OPEN HOLE LOG = 6847, STATE RPT = 6849.

Directions To Well

Congressional Location

Quarter 1	Quarter 2	Quarter 3	Quarter 4	Section	Township	Twship N...	Range	Rng E/W Dir
		NW	NE	18	5	N	63	W

Bottom Hole Location

North-South Distance (ft)	From N or S Line	East-West Distance (ft)	From E or W Line

Plug Back Total Depths

Date	Depth (ftKB)	Method	Com
12/27/1996	6,751.0	CASING TALLY	FLOAT SHOE W/ BAFFLE
1/2/1997	6,748.0	CASED HOLE LOG	DEPTH LOGGER ON CBL
5/20/2005	6,748.0	TAG	CLEAN OUT TO LAND TUBING

Wellbore Sections

Section Des	Size (in)	Act Top, MD (ftKB)	Act Btm, MD (ftKB)
SURFACE	12 1/4	10.0	377.0
PRODUCTION	7 7/8	377.0	6,847.0

Zone Statuses

Zone Name	Status Date	Status	Fluid Type	Job
NIOBRARA	1/24/1997	PR		DRILLING/COMPLETI...
NIOBRARA	8/28/1999	SI		CASING REPAIR, 8/28...
NIOBRARA	9/16/1999	PR		CASING REPAIR, 8/28...
CODELL	1/24/1997	PR		DRILLING/COMPLETI...
CODELL	8/28/1999	SI		CASING REPAIR, 8/28...
CODELL	9/16/1999	PR		CASING REPAIR, 8/28...
CODELL	6/27/2005	PR		RE-FRAC, 4/29/2005 0...

Casing Strings

Surface, 367.0ftKB

Casing Description	Run Date	OD (in)	Wt/Len (l...)	Grade	Top, MD (ft...)	MD (ftKB)
Surface	12/22/1996	8 5/8	23.00	X-42	10.0	367.0

Production, 5,897.0ftKB

Casing Description	Run Date	OD (in)	Wt/Len (l...)	Grade	Top, MD (ft...)	MD (ftKB)
Production	9/1/1999	3 1/2	7.70	M-75	10.0	5,897.0

Production, 6,807.0ftKB

Casing Description	Run Date	OD (in)	Wt/Len (l...)	Grade	Top, MD (ft...)	MD (ftKB)
Production	12/27/1996	3 1/2	7.70	B-70	10.0	6,807.0

Cement

Description	Top Depth (ftKB)	Bottom Depth (ftKB)
SURFACE CASING CEMENT	10.0	367.0
PRODUCTION CASING CEMENT	6,000.0	6,807.0
REMEDIAL CASING CEMENT	10.0	4,108.0

Tubing Strings

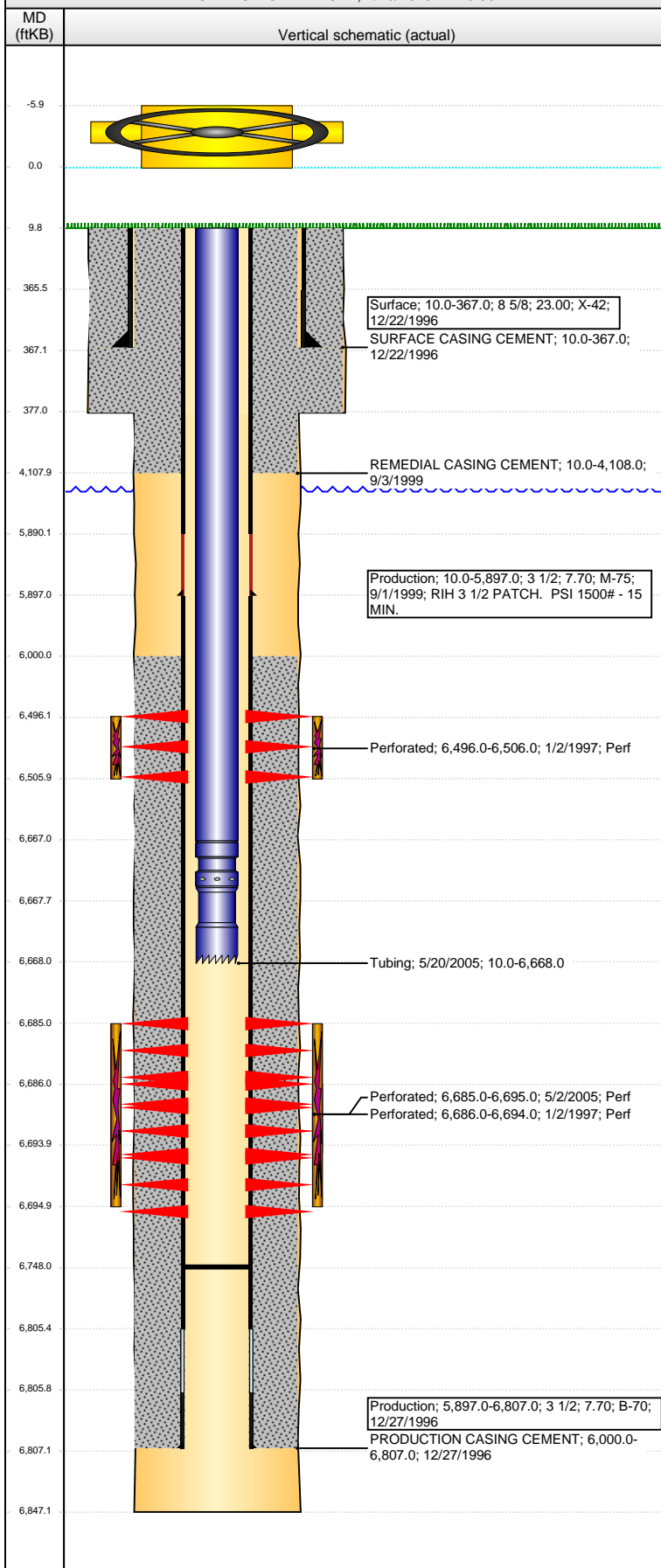
Tubing Description	Run Date	String...	ID (in)	Wt (lb/ft)	Grade	Len (ft)	Set De...
Tubing	5/20/2005	2 1/16	1.751	3.25		6,658.00	

Tubing Components

Item Des	OD (in)	Wt (lb/ft)	Grade	Jts	Len (ft)	Btm (ftKB)	Btm (TVD) (ftKB)
Tubing	2 1/16	3.25		214	6,657.00	6,667.0	
Pump Seating Nipple	2 1/16				0.50	6,667.5	
Notched collar	2 1/16				0.50	6,668.0	

Well Name: DKW GREEN STATE BB18-02

VERTICAL - ORIGINAL HOLE, 4/20/2015 12:15:50 PM



Perforation Data

Zone	Bnch/St g	Entered Shot Total	Top (ftKB)	Btm (ftKB)	Date
NIOBRARA, ORIGINAL HOLE		10	6,496.00	6,506.00	1/2/1997
CODELL, ORIGINAL HOLE		40	6,685.00	6,695.00	5/2/2005
CODELL, ORIGINAL HOLE		32	6,686.00	6,694.00	1/2/1997

Stimulations & Treatments

Date	Zone	Primary Job Type
1/4/1997	CODELL, ORIGINAL HOLE	DRILLING/COMPLETION - ORIGINAL
Technical Result	Tech Result Details	Tech Result Note
Comment		

Date	Zone	Primary Job Type
1/4/1997	NIOBRARA, ORIGINAL HOLE	DRILLING/COMPLETION - ORIGINAL
Technical Result	Tech Result Details	Tech Result Note
Comment		

Date	Zone	Primary Job Type
5/17/2005	CODELL, ORIGINAL HOLE	RE-FRAC
Technical Result	Tech Result Details	Tech Result Note
Comment		

Other In Hole

Run Date	Des	OD (in)	Top (ftKB)	Btm (ftKB)

Logs

Date	Type	Top, MD (ftKB)	Btm, MD (ftKB)
12/27/1996	COMPENSATED DENSITY	4,100.0	6,830.0
12/27/1996	INDUCTION	367.0	6,847.0
1/2/1997	CEMENT BOND	5,800.0	6,748.0
1/2/1997	CEMENT BOND	5,800.0	6,748.0
12/9/2014	GYRO	10.0	6,600.0