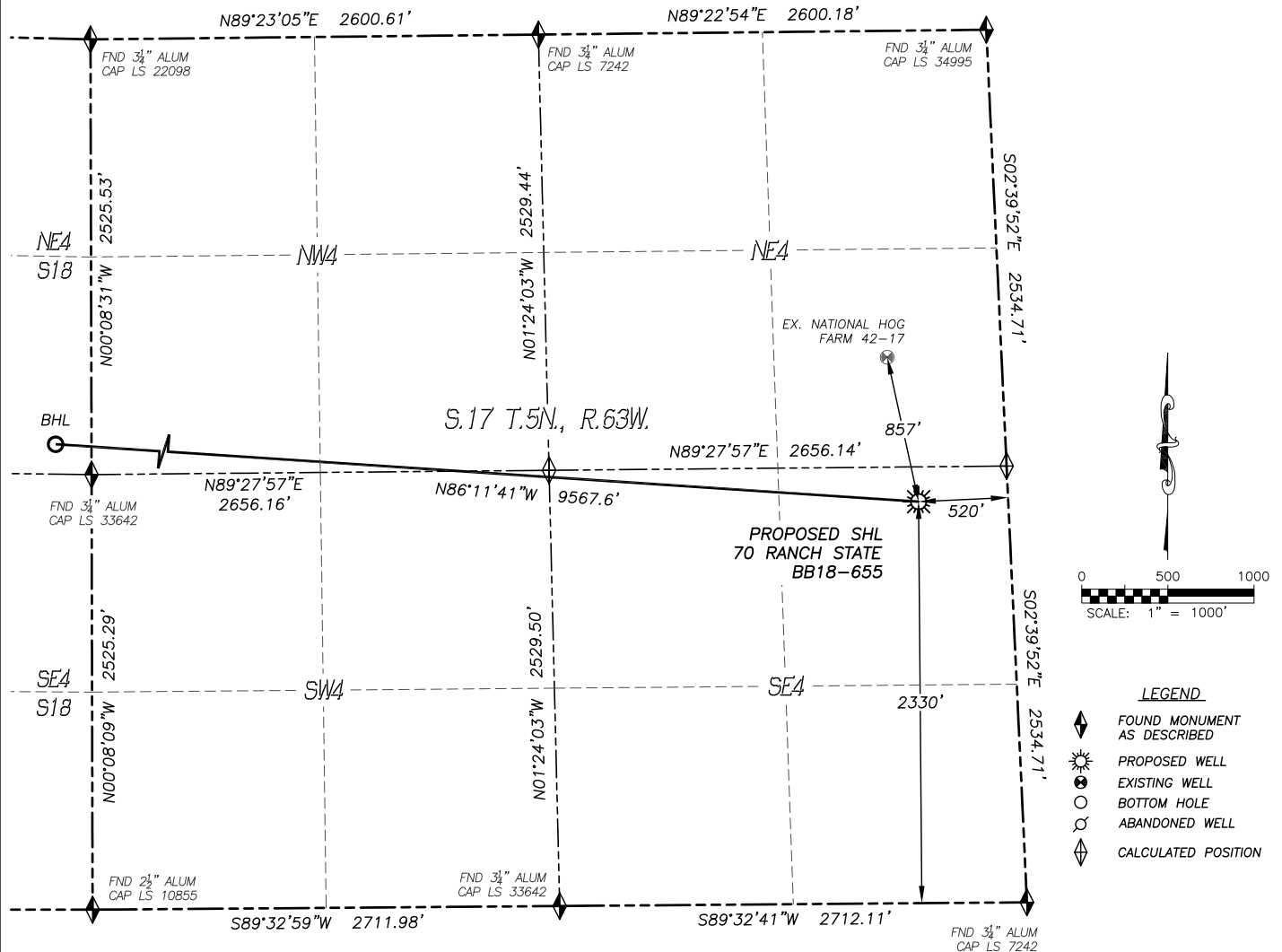


WELL LOCATION CERTIFICATE

70 RANCH STATE BB18-655

SECTION: 17
TOWNSHIP: 5N
RANGE: 63W



IN ACCORDANCE WITH A REQUEST FROM CODY BALL OF NOBLE ENERGY INC., DALEY LAND SURVEYING, INC. HAS DETERMINED THE SURFACE LOCATION OF THE 70 RANCH STATE BB18-655 WELL TO BE 2330' FSL, 520' FEL, AS MEASURED AT 90 (90) DEGREES FROM THE SECTION LINES OF SECTION 17, TOWNSHIP 5 NORTH, RANGE 63 WEST, AND THE BOTTOM HOLE LOCATION TO BE 2160' FNL, 535' FWL, AS MEASURED AT NINETY (90) DEGREES FROM THE SECTION LINES OF SECTION 18, TOWNSHIP 5 NORTH, RANGE 63 WEST, OF THE 6TH PRINCIPAL MERIDIAN, WELD COUNTY, COLORADO.

I HEREBY STATE THAT THIS WELL LOCATION CERTIFICATE WAS PREPARED BY ME OR UNDER MY DIRECT SUPERVISION, THAT THE WORK WAS COMPLETED ON 11/4/2014 FOR AND ON BEHALF OF NOBLE ENERGY, INC., AND THAT THIS MAP DOES NOT REPRESENT A BOUNDARY SURVEY, IT IS NOT A LAND SURVEY PLAT OR AN IMPROVEMENT SURVEY PLAT AND IT IS NOT TO BE RELIED UPON FOR THE ESTABLISHMENT OF FENCE, BUILDING OR OTHER FUTURE IMPROVEMENT LINES.

NOTES:

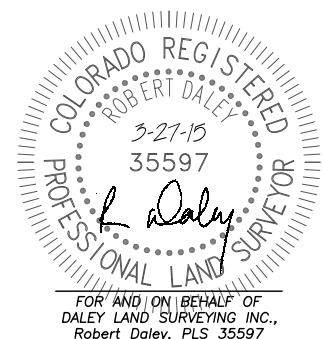
- 1) BEARINGS FOR THIS MAP ARE ASSUMED AND BASED UPON GPS OBSERVATIONS MADE BETWEEN MONUMENTS LOCATED AT THE SOUTHEAST CORNER AND SOUTH QUARTER CORNER OF SECTION 17, T.5N., R.63W.
- 2) HORIZONTAL DATUM IS NAD83.
- 3) VERTICAL DATUM IS NAVD88 AND ORIGINATES FROM THE LOCAL C.O.R.S. NETWORK, UTILIZING THE GEOID12A MODEL.
- 4) SEE LOCATION DRAWING FOR VISIBLE IMPROVEMENTS WITHIN 500' OF PROPOSED DISTURBED AREA.
- 5) SURFACE USE: RANGE LAND.
- 6) INST. OPERATOR: TREVOR DALEY.
- 7) NEAREST WELL: 857'± N. - NATIONAL HOG FARM 42-17

NEAREST CULTURAL ITEMS:

- | | |
|--------------------------------|---------|
| 1) BUILDING: | 5280'± |
| 2) BUILDING UNIT: | 5280'± |
| 3) HIGH OCC. BLD. UNIT: | 5280'± |
| 4) DES. OUTSIDE ACTIVITY AREA: | 5280'± |
| 5) PUBLIC ROAD: | 5280'± |
| 6) ABOVE GROUND UTILITY: | 5280'± |
| 7) RAILROAD: | 5280'± |
| 8) PROPERTY LINE: | 520'± E |

NAD 83 LATITUDE AND LONGITUDE

| SURFACE LOCATION: | | BOTTOM HOLE: | |
|-------------------|-------------|--------------|-------------|
| LATITUDE: | N40.39844° | LATITUDE: | N40.40019° |
| LONGITUDE: | W104.45291° | LONGITUDE: | W104.48718° |
| ELEV: | 4668' | | |
| PDOP: | 1.0 | | |
| QTR/QTR: | NE4/SE4 | | |



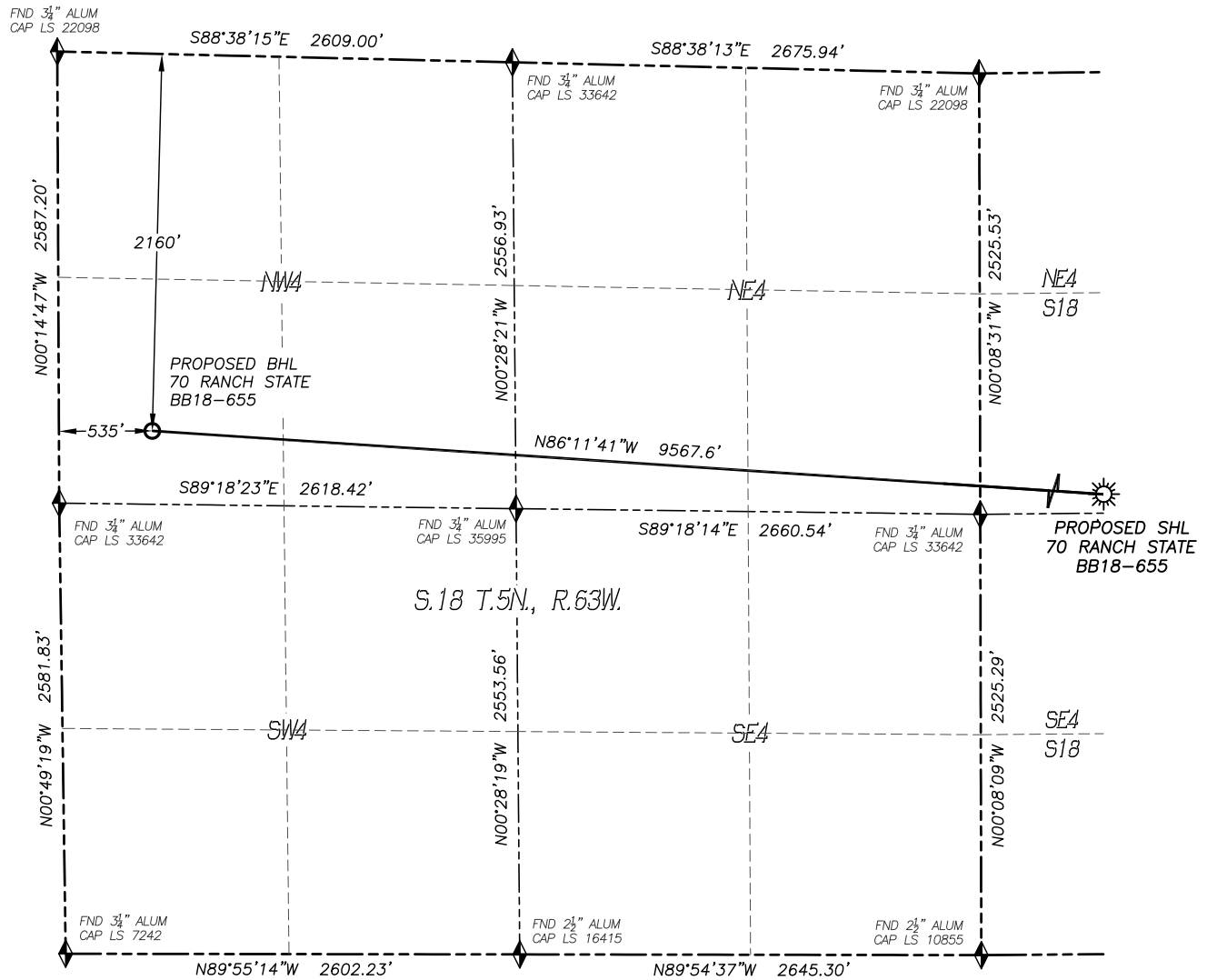
SHEET 1 OF 2

Drawing Date: 3/27/15

WELL LOCATION CERTIFICATE

70 RANCH STATE BB18-655

SECTION: 17
TOWNSHIP: 5N
RANGE: 63W



LEGEND

- FOUND MONUMENT AS DESCRIBED
- PROPOSED WELL
- EXISTING WELL
- BOTTOM HOLE
- ABANDONED WELL
- CALCULATED POSITION

