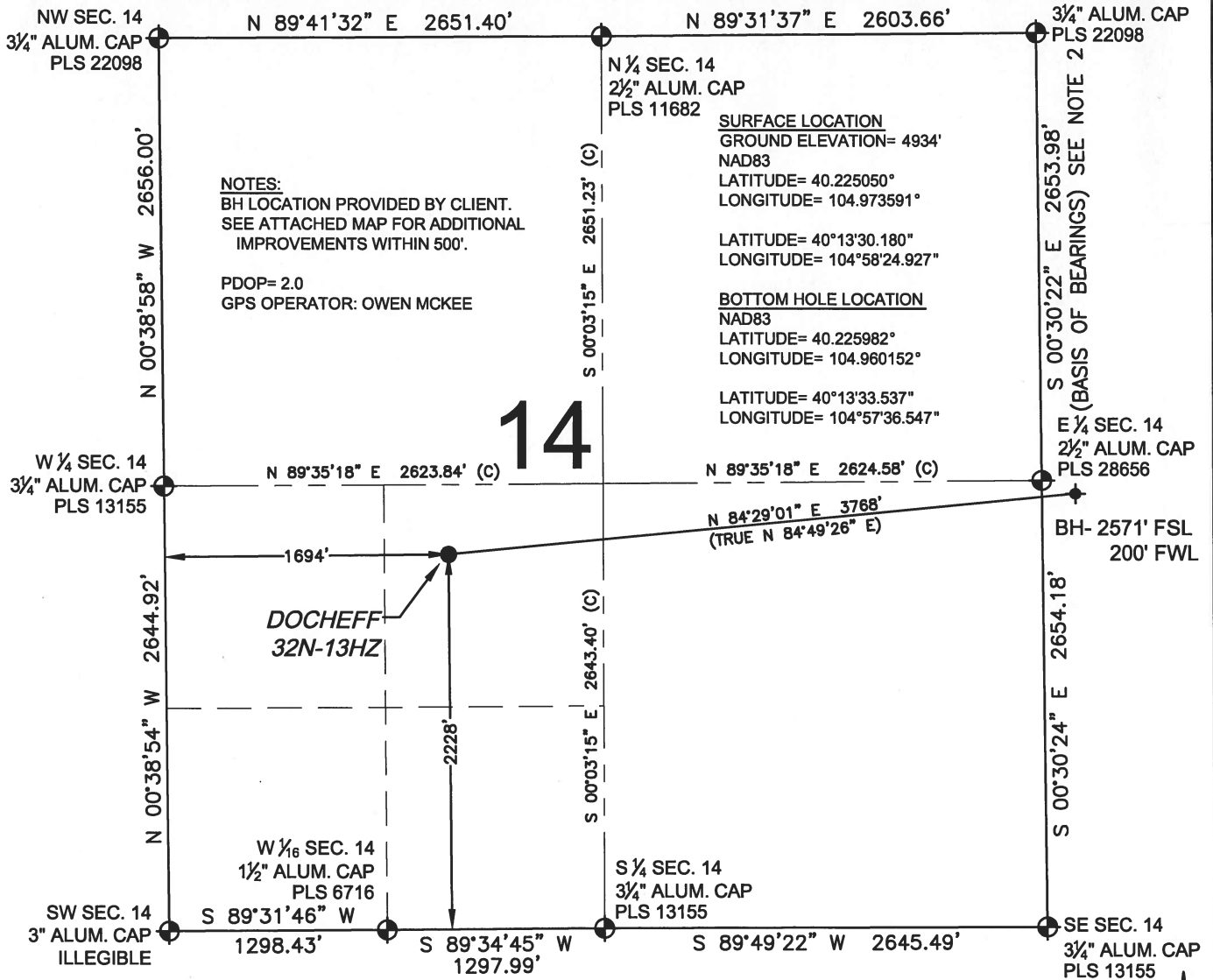


WELL LOCATION CERTIFICATE: DOCHEFF 32N-13HZ

SECTION 14, TOWNSHIP 3 NORTH, RANGE 68 WEST, 6TH P.M.



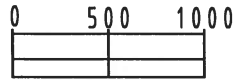
NOTES:
 BH LOCATION PROVIDED BY CLIENT.
 SEE ATTACHED MAP FOR ADDITIONAL
 IMPROVEMENTS WITHIN 500'.
 PDOP= 2.0
 GPS OPERATOR: OWEN MCKEE

SURFACE LOCATION
 GROUND ELEVATION= 4934'
 NAD83
 LATITUDE= 40.225050°
 LONGITUDE= 104.973591°
 LATITUDE= 40°13'30.180"
 LONGITUDE= 104°58'24.927"

BOTTOM HOLE LOCATION
 NAD83
 LATITUDE= 40.225982°
 LONGITUDE= 104.960152°
 LATITUDE= 40°13'33.537"
 LONGITUDE= 104°57'36.547"

LEGEND

- ⊕ = EXISTING MONUMENT
- ⊙ = PROPOSED WELL
- ⊕ = BOTTOM HOLE
- ⬠ = EXISTING WELL
- BH = BOTTOM HOLE



SCALE: 1"= 1000'

NOTES:

- THIS FIELD SURVEY CONFORMS TO THE MINIMUM STANDARDS SET BY THE C.O.G.C.C., RULE NO. 215
- BEARINGS ARE BASED ON THE ASSUMPTION THAT THE EAST LINE OF THE NORTHEAST QUARTER OF SECTION 14, BEARS S 00°30'22" E BETWEEN THE MONUMENTS SHOWN HEREON.
- GRID DISTANCES ARE SHOWN, AS GPS MEASURED IN THE FIELD, WITH TIES TO WELLS MEASURED PERPENDICULAR TO SECTION LINES. TO GET GROUND DISTANCES MULTIPLY THE SHOWN DISTANCE BY 1.000275602.
- ELEVATIONS SHOWN ARE NAVD 88, AS DERIVED BY GPS OBSERVATIONS.
- ORIGINAL SIGNING DATE OF MAY 29, 2014. WELL STAKING COMPLETED ON MAY 9, 2014.
- BOTTOM HOLE REVISION COMPLETED ON MARCH 31, 2015.

I, JACOB S. FRISCH, A LICENSED PROFESSIONAL LAND SURVEYOR IN THE STATE OF COLORADO DO HEREBY CERTIFY TO **KERR-MCGEE OIL & GAS ONSHORE LP**, THAT THE SURVEY AND WELL LOCATION CERTIFICATE SHOWN HEREON WERE DONE BY ME OR UNDER MY DIRECT SUPERVISION AND THAT THE DRAWING SHOWN HEREON ACCURATELY DEPICTS THE PROPOSED LOCATION OF THE WELL. THIS CERTIFICATE DOES NOT REPRESENT A LAND SURVEY PLAT OR IMPROVEMENT SURVEY PLAT AS DEFINED BY C.R.S. 38-51-102 AND CANNOT BE RELIED UPON TO DETERMINE OWNERSHIP.

JACOB S. FRISCH
 DATE: 03-31-15
 JOB NO: B14.APC.0458
 FOR AND ON BEHALF OF P.F.S., LLC

SHEET 1 OF 2

| | | |
|--|-------------------------|---|
| PREPARED BY: PFS Petroleum Field Services, LLC 7535 Hilltop Circle Denver, CO 80221 | FIELD DATE: 05-09-14 | SURFACE LOCATION: NE 1/4 SW 1/4, SEC. 14, T3N, R68W, 6TH P.M. |
| BY: TJN | CHECKED: SMF | WELD COUNTY, COLORADO |

NOTICE: ACCORDING TO COLORADO LAW YOU MUST COMMENCE ANY LEGAL ACTION BASED UPON ANY DEFECT IN THIS SURVEY WITHIN THREE YEARS AFTER YOU FIRST DISCOVER SUCH DEFECT. IN NO EVENT MAY ANY ACTION BASED UPON ANY DEFECT IN THIS SURVEY BE COMMENCED MORE THAN TEN YEARS FROM THIS SAID DATE OF THIS CERTIFICATION SHOWN HEREON.

