

DATE: 3/9/2015  
PROJECT#: 2014021

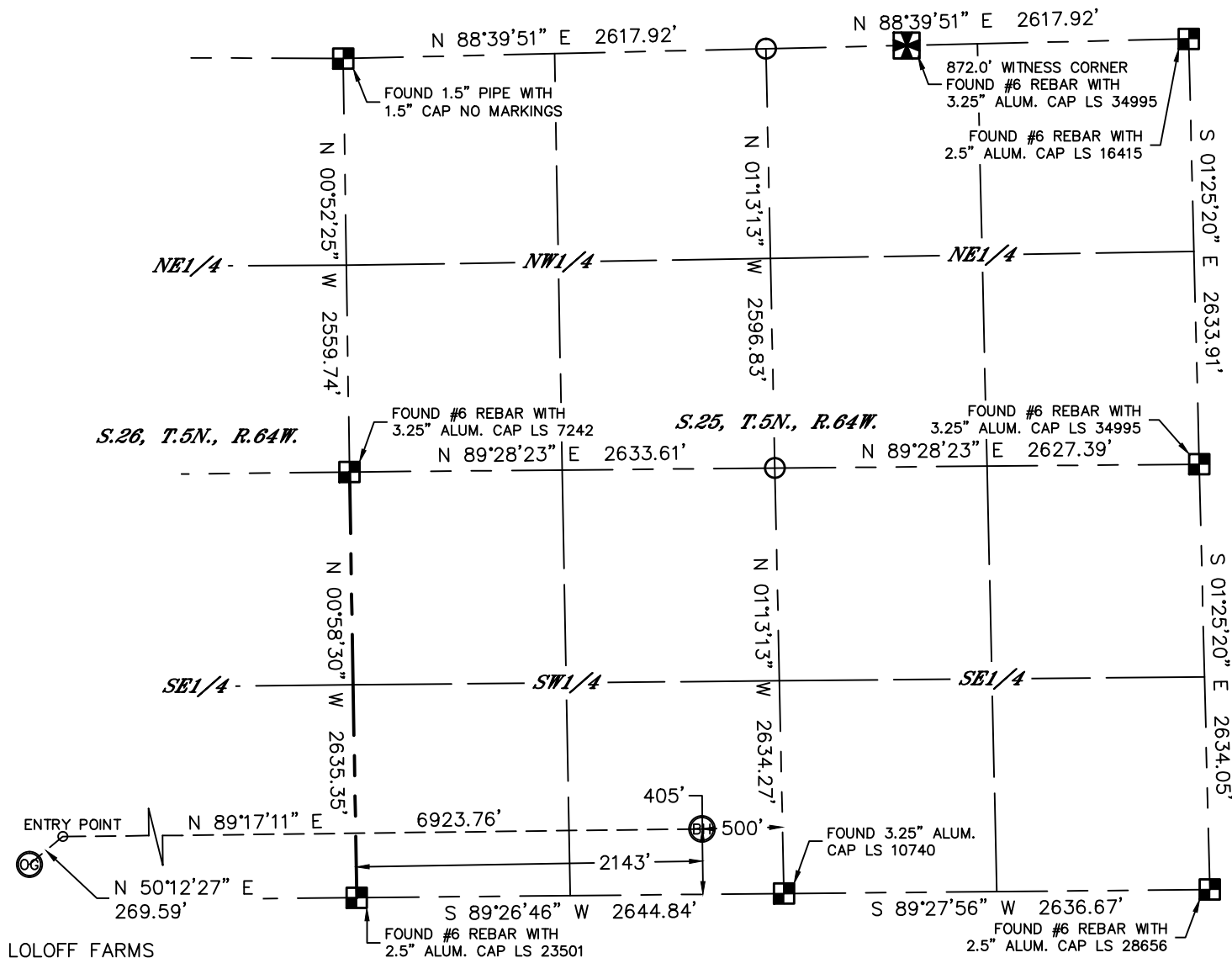


Lat40°, Inc. 1635 Foxtrail Drive, Suite 325 Loveland, CO 970-776-3321

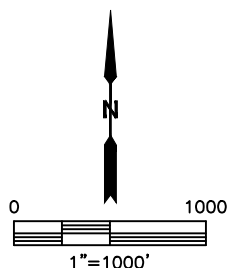
# WELL LOCATION CERTIFICATE

THIS MAP DOES NOT REPRESENT A BOUNDARY SURVEY

SECTION: 26  
TOWNSHIP: 5N  
RANGE: 64W



LOLOFF FARMS  
261-312



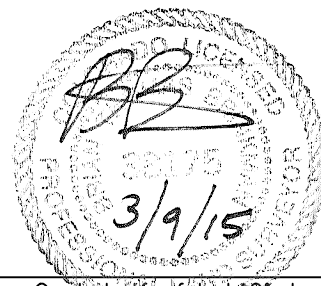
## LEGEND

- = ALIQUOT MONUMENT AS DESCRIBED
- = CALCULATED POSITION

## SHEET 2 OF 2

Brian T. Brinkman—On behalf of Lat40°, Inc.  
Colorado Licensed Professional  
Land Surveyor No. 38175

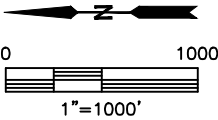
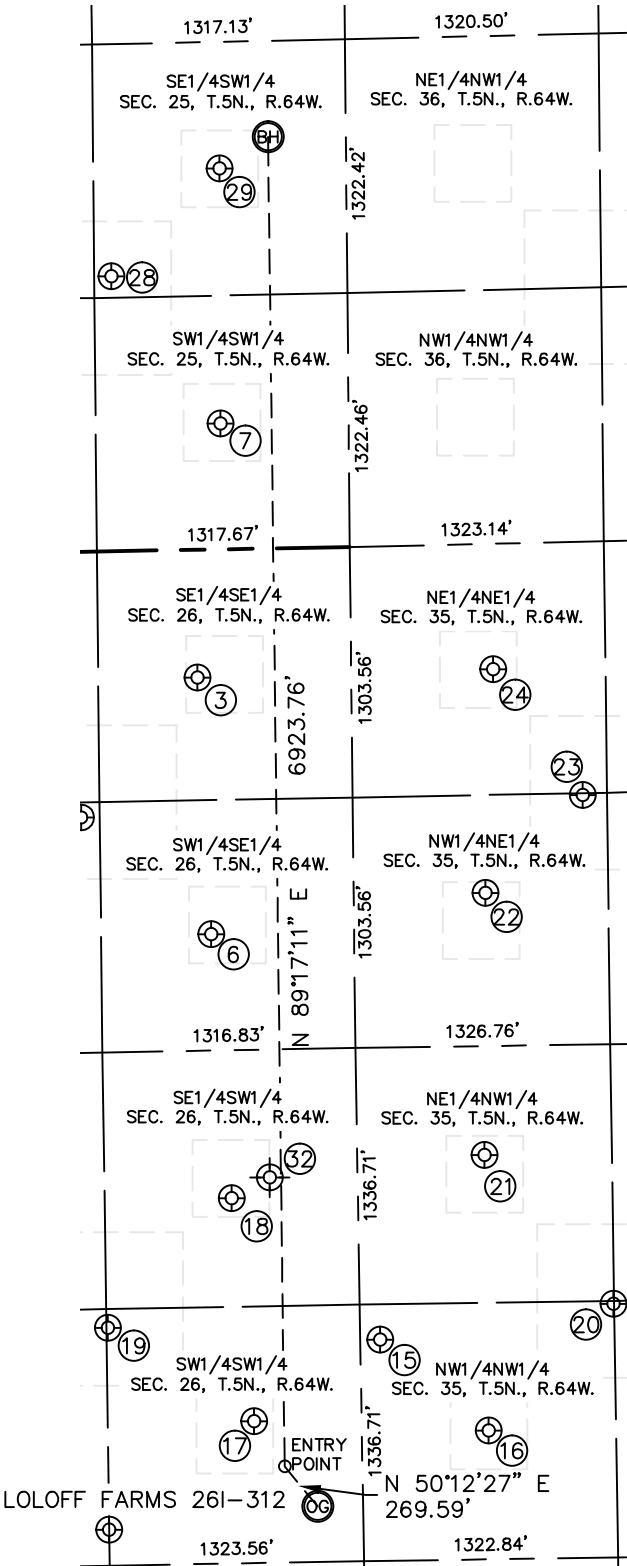
DATE: 3/9/2015  
PROJECT#: 2014021





**SITE SKETCH**  
LOLOFF FARMS 26I-312

SECTION: 26  
TOWNSHIP: 5N  
RANGE: 64W





Lat40°, Inc. 1635 Foxtrail Drive, Suite 325 Loveland, CO 970-776-3321

# SITE SKETCH

LOLOFF FARMS 26I-312

SECTION: 26  
TOWNSHIP: 5N  
RANGE: 64W

WELL NO.	WELL NAME	SHL FOOTAGE				SHL LAT°	SHL LONG°	PDOP	ELEV (FT.)	1/4/1/4
3	SCHLAGEL 26-4	802	FSL	665	FEL	40.36536	-104.50981	2.1	4590	SESE
6	SCHLAGEL 26-1	745	FSL	2003	FEL	40.36520	-104.51461	2.1	4611	SWSE
7	LOUSTALET 25-1	668	FSL	656	FWL	40.36499	-104.50506	2.1	4591	SWSW
15	LOLOFF B 35-29	103	FNL	1153	FWL	40.36285	-104.52221	1.8	4662	NWNW
16	STROH 35-4	660	FNL	671	FWL	40.36131	-104.52393	1.6	4648	NWNW
17	LOLOFF 2	560	FSL	738	FWL	40.36466	-104.52371	1.5	4668	NWNW
18	LOLOFF B 26-14X	658	FSL	1901	FWL	40.36495	-104.51954	1.7	4659	SESW
19	LOLOFF B 26-25	1314	FSL	1238	FWL	40.36674	-104.52194	1.8	4642	SWSW
20	LOLOFF B 35-19	1320	FNL	1321	FWL	40.35951	-104.52159	2.2	4630	NWNW
21	LOLOFF 3	663	FNL	2104	FWL	40.36133	-104.51879	1.6	4635	NENW
22	LOLOFF 35-6	685	FNL	1818	FEL	40.36128	-104.51389	1.3	4611	NWNE
23	LOLOFF B 35-17	1197	FNL	1320	FEL	40.35987	-104.51209	1.5	4599	NWNE
24	LOLOFF 35-5	738	FNL	654	FEL	40.36113	-104.50972	1.5	4593	NENE
28	LOUSTALET 5	1228	FSL	1431	FWL	40.36652	-104.50229	1.7	4584	SESW
29	LOUSTALET 24-25	660	FSL	1983	FWL	40.36496	-104.50030	1.8	4588	SESW
32	LOLOFF 26-14	457	FSL	2006	FWL	40.36441	-104.51909	N/A	4645	SESW

*SHEET 2 OF 2*

NOTE: THE ABANDONED WELL DATA SHOWN IN RED ABOVE WAS OBTAINED FROM COGCC SCOUT CARDS.

DATE: 3/9/2015  
PROJECT#: 2014021