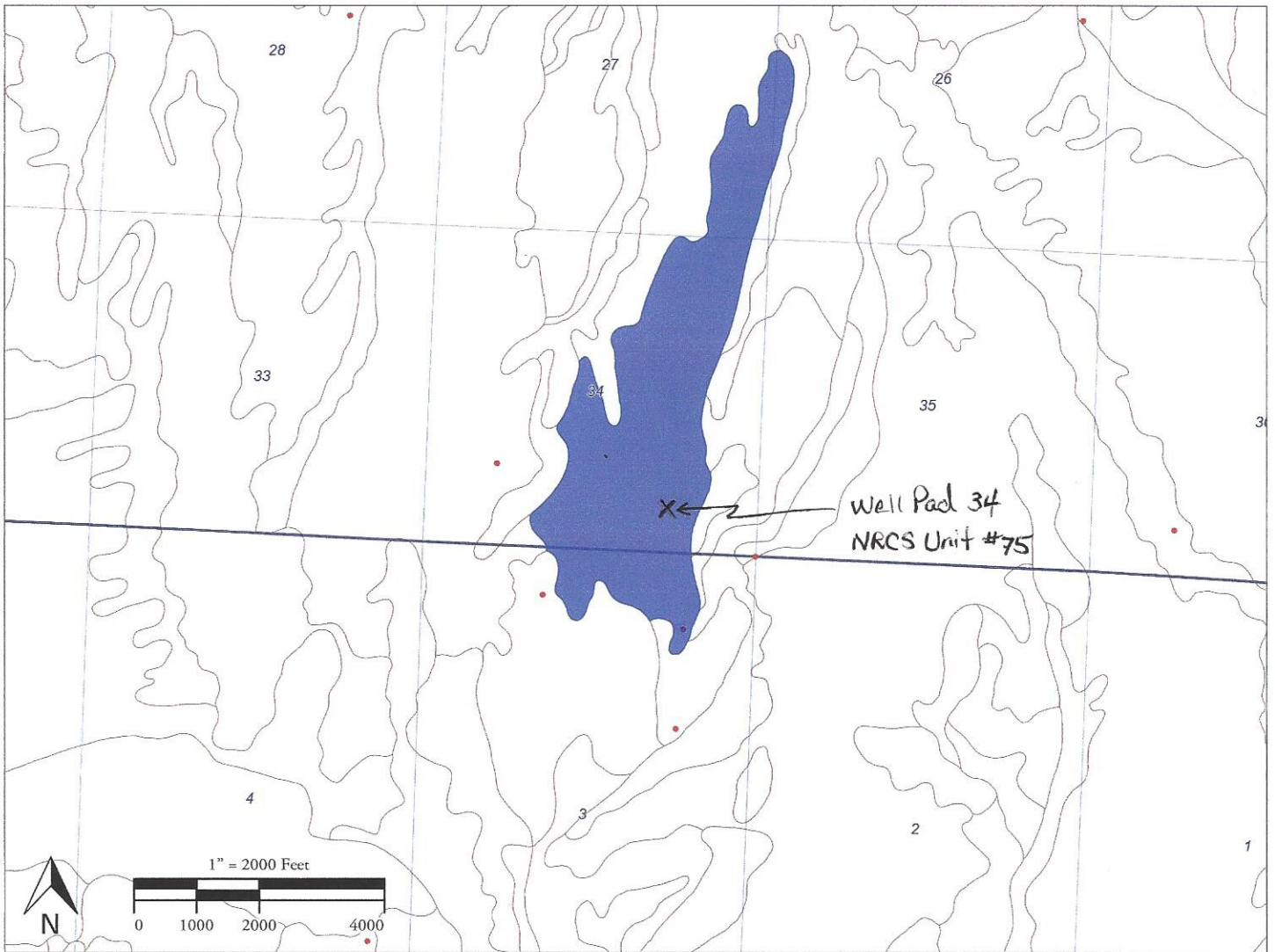


Shavetail Federal well pad 34



Shavetail Federal Well Pad 34

NCRS Soil Type

75—Rentsac-Piceance complex, 2 to 30 percent slopes

Map Unit Setting

National map unit symbol: jp66

Elevation: 6,000 to 7,600 feet

Mean annual precipitation: 14 to 18 inches

Mean annual air temperature: 42 to 45 degrees F

Frost-free period: 80 to 105 days

Farmland classification: Not prime farmland

Map Unit Composition

Rentsac and similar soils: 60 percent

Piceance and similar soils: 30 percent

Estimates are based on observations, descriptions, and transects of the mapunit.

Custom Soil Resource Report

Description of Rentsac

Setting

Landform: Ridges
Landform position (three-dimensional): Upper third of mountainflank
Down-slope shape: Linear
Across-slope shape: Linear
Parent material: Residuum weathered from sandstone

Typical profile

H1 - 0 to 5 inches: channery loam
H2 - 5 to 16 inches: extremely channery loam, extremely gravelly sandy loam, very flaggy loam
H2 - 5 to 16 inches: unweathered bedrock
H2 - 5 to 16 inches:
H3 - 16 to 20 inches:

Properties and qualities

Slope: 8 to 30 percent
Depth to restrictive feature: 10 to 20 inches to lithic bedrock
Natural drainage class: Well drained
Runoff class: Very high
Capacity of the most limiting layer to transmit water (Ksat): Very low (0.00 in/hr)
Depth to water table: More than 80 inches
Frequency of flooding: None
Frequency of ponding: None
Calcium carbonate, maximum in profile: 15 percent
Salinity, maximum in profile: Nonsaline to very slightly saline (0.0 to 4.0 mmhos/cm)
Available water storage in profile: Very low (about 2.0 inches)

Interpretive groups

Land capability classification (irrigated): None specified
Land capability classification (nonirrigated): 7e
Hydrologic Soil Group: D

Description of Piceance

Setting

Landform: Ridges
Landform position (three-dimensional): Upper third of mountainflank
Down-slope shape: Linear
Across-slope shape: Linear
Parent material: Residuum weathered from sandstone

Typical profile

H1 - 0 to 4 inches: fine sandy loam
H2 - 4 to 22 inches: loam, sandy clay loam, clay loam
H2 - 4 to 22 inches: channery sandy loam, channery loam, channery sandy clay loam
H2 - 4 to 22 inches: unweathered bedrock
H3 - 22 to 30 inches:
H3 - 22 to 30 inches:
H3 - 22 to 30 inches:
H4 - 30 to 34 inches:

Properties and qualities

Slope: 2 to 15 percent

Custom Soil Resource Report

Depth to restrictive feature: 20 to 40 inches to lithic bedrock

Natural drainage class: Well drained

Runoff class: Medium

Capacity of the most limiting layer to transmit water (Ksat): Moderately low to high
(0.06 to 2.00 in/hr)

Depth to water table: More than 80 inches

Frequency of flooding: None

Frequency of ponding: None

Calcium carbonate, maximum in profile: 10 percent

Available water storage in profile: High (about 11.6 inches)

Interpretive groups

Land capability classification (irrigated): None specified

Land capability classification (nonirrigated): 4e

Hydrologic Soil Group: C

Ecological site: Rolling loam (R048AY298CO)