

PROCEED IN AN EASTERLY DIRECTION FROM COLLBRAN, COLORADO ALONG HIGHWAY 330 APPROXIMATELY 9.8 MILES TO THE JUNCTION OF THIS ROAD AND GROUNDHOG GULCH ROAD TO THE SOUTH; TURN RIGHT AND PROCEED IN A SOUTHERLY DIRECTION APPROXIMATELY 1.4 MILES TO THE BEGINNING OF THE PROPOSED ACCESS ROAD TO THE NORTHWEST; FOLLOW ROAD FLAGS IN A NORTHWESTERLY, THEN SOUTHWESTERLY DIRECTION APPROXIMATELY 1042' TO THE PROPOSED LOCATION

TOTAL DISTANCE FROM COLLBRAN, COLORADO TO THE PROPOSED WELL LOCATION IS APPROXIMATELY 11.4 MILES.

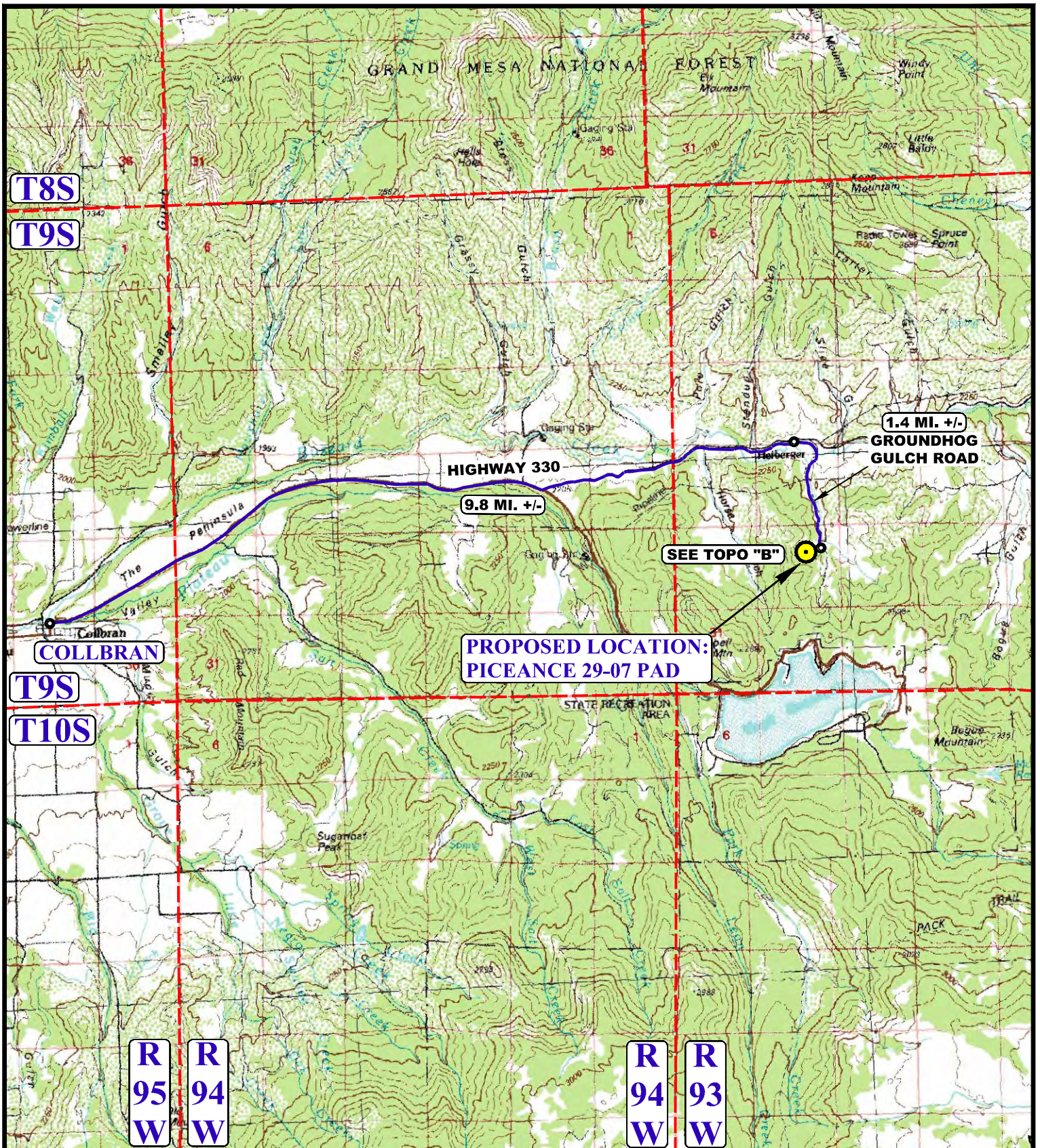
PICEANCE ENERGY, LLC

**PICEANCE 29-07 PAD
SECTION 29, T9S, R93W, 6th P.M.
SW 1/4 NE 1/4
MESA COUNTY, COLORADO**



UELS, LLC
Corporate Office * 85 South 200 East
Vernal, UT 84078 * (435) 789-1017

DRAWN BY: C.B.	DATE DRAWN: 03-04-15
	REVISED: 00-00-00
ROAD DESCRIPTION	



**PROPOSED LOCATION:
PICEANCE 29-07 PAD**

SEE TOPO "B"

**1.4 MI. +/-
GROUNDHOG
GULCH ROAD**

HIGHWAY 330

9.8 MI. +/-

COLLBRAN

T8S

T9S

T9S

T10S

**R
95
W**

**R
94
W**

**R
94
W**

**R
93
W**

LEGEND:

 **PROPOSED LOCATION**



PICEANCE ENERGY, LLC

**PICEANCE 29-07 PAD
SECTION 29, T9S, R93W, 6th P.M.
SW 1/4 NE 1/4
MESA COUNTY, COLORADO**

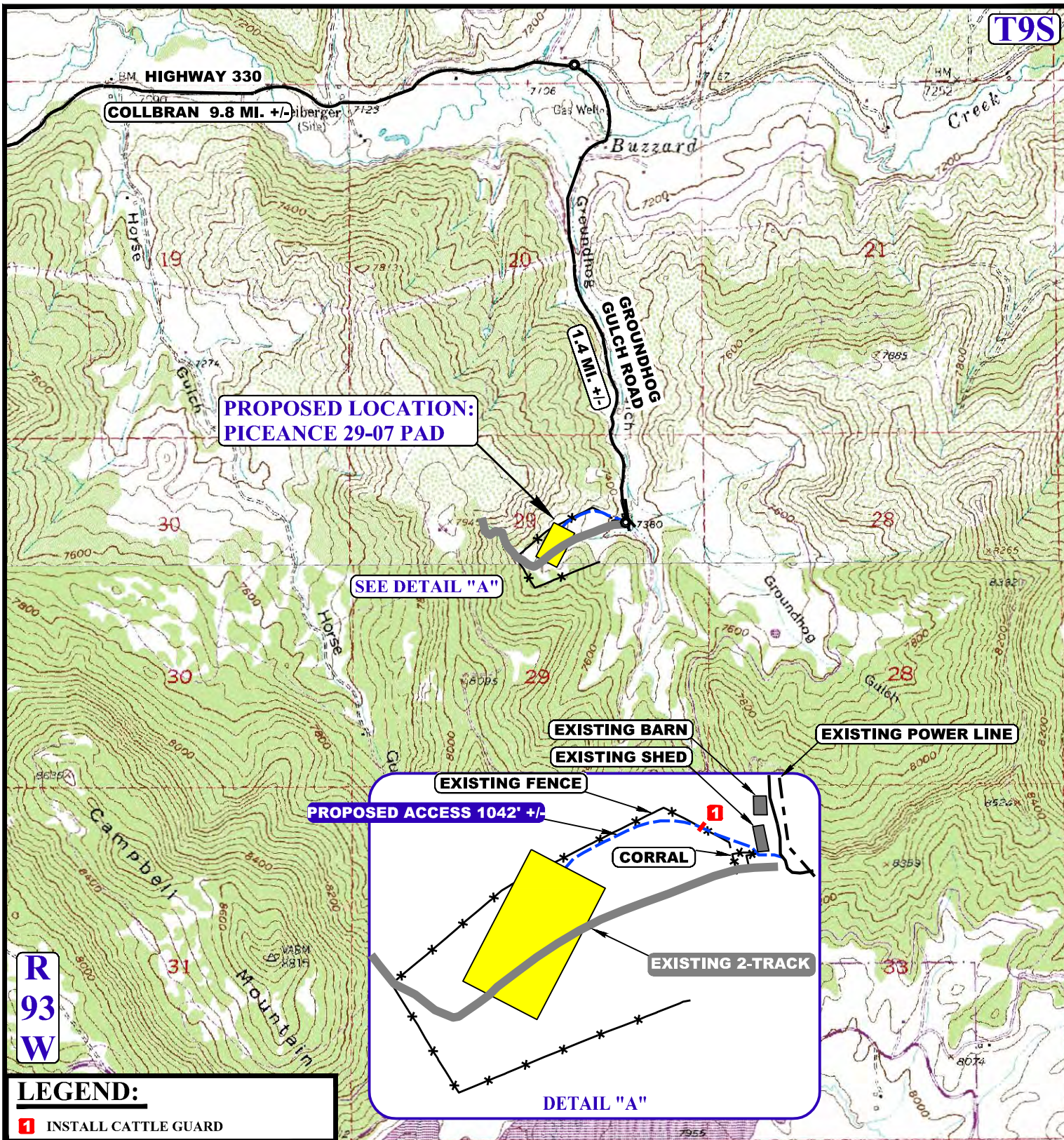


UELS, LLC
Corporate Office * 85 South 200 East
Vernal, UT 84078 * (435) 789-1017

DRAWN BY: C.B.	DATE DRAWN: 03-04-15
SCALE: 1:100,000	REVISED: 00-00-00

ACCESS ROAD MAP | **TOPO A**

T9S



R
93
W

LEGEND:

1 INSTALL CATTLE GUARD

NOTE: PARCEL DATA SHOWN HAS BEEN OBTAINED FROM VARIOUS SOURCES AND SHOULD BE USED FOR MAPPING, GRAPHIC AND PLANNING PURPOSES ONLY. NO WARRANTY IS MADE BY UINTAH ENGINEERING AND LAND SURVEYING (UELS) FOR ACCURACY OF THE PARCEL DATA.

LEGEND:

- EXISTING ROAD
- - - PROPOSED ROAD
- - - EXISTING POWER LINE
- EXISTING 2-TRACK
- * * EXISTING FENCE



PICEANCE ENERGY, LLC

PICEANCE 29-07 PAD
 SECTION 29, T9S, R93W, 6th P.M.
 SW 1/4 NE 1/4
 MESA COUNTY, COLORADO

DRAWN BY: C.B.	DATE DRAWN: 03-04-15
SCALE: 1" = 2000'	REVISED: 00-00-00

ACCESS ROAD MAP

TOPO B



UELS, LLC
 Corporate Office * 85 South 200 East
 Vernal, UT 84078 * (435) 789-1017