

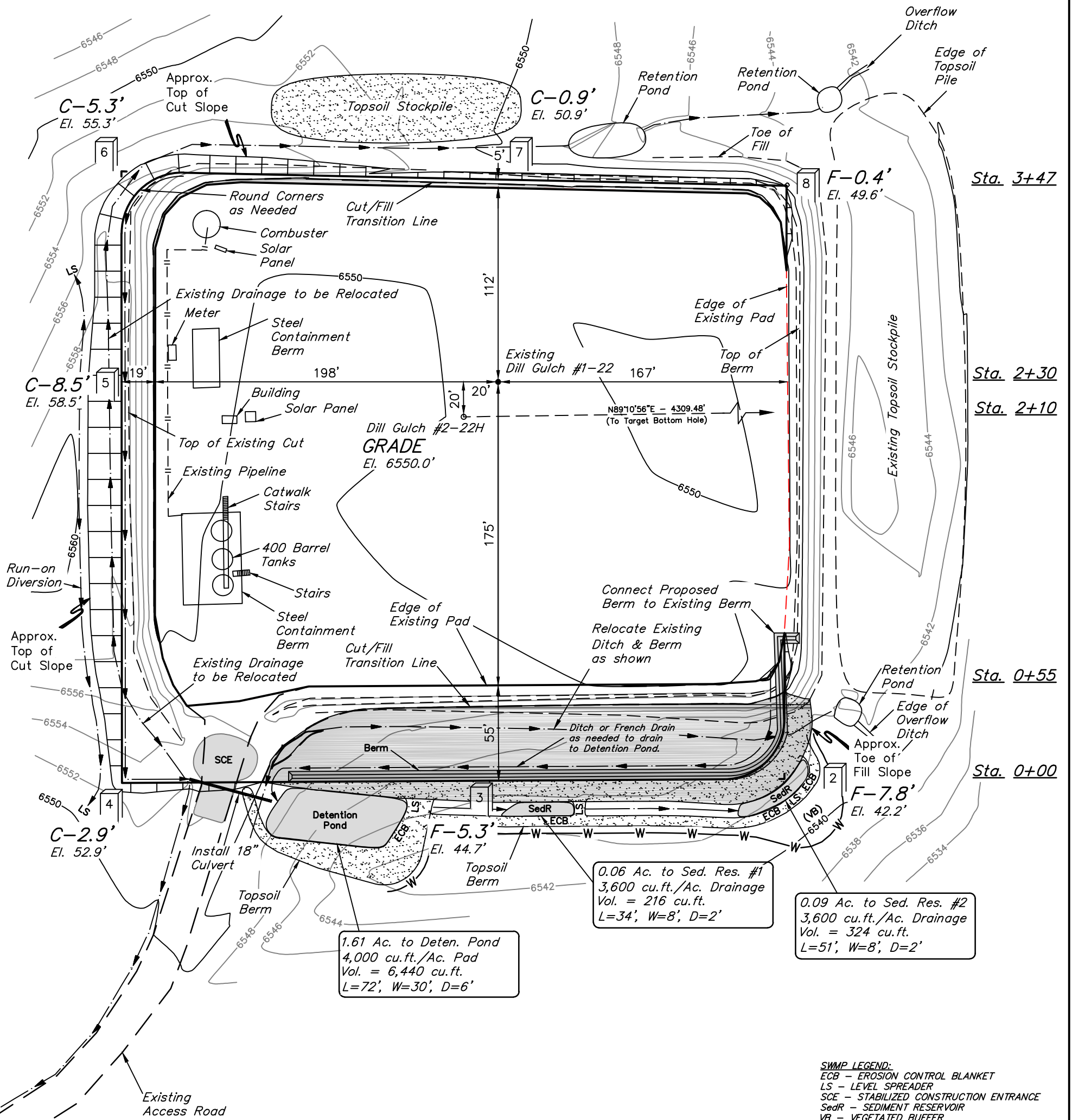
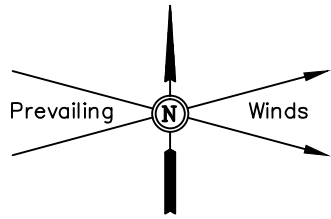
# SOUTHWESTERN ENERGY PRODUCTION COMPANY

## CONSTRUCTION LAYOUT FOR

DILL GULCH 6-88 #2-22H ON EXISTING #1-22 PAD  
SECTION 22, T6N, R88W, 6th. P.M.  
NW 1/4 SW 1/4

FIGURE #1

SCALE: 1" = 60'  
DATE: 03-03-15  
DRAWN BY: M.O.B.  
REVISED: 03-23-15 T.B.



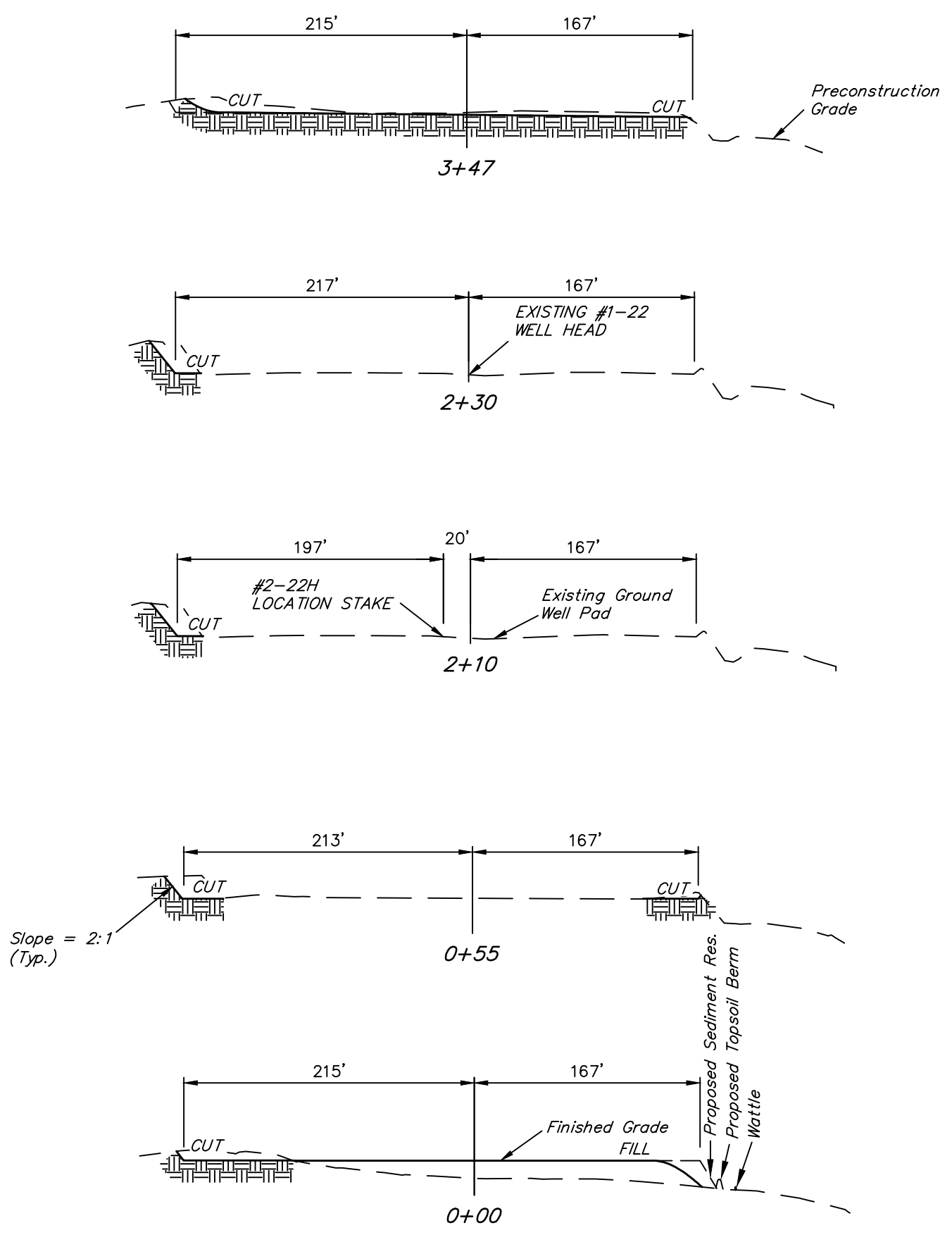
Elev. Graded Ground At #1-22 Loc. Stake = 6549.7'  
FINISHED GRADE ELEV. AT #2-22H LOC. STAKE = 6550.0'

UINTAH ENGINEERING & LAND SURVEYING  
85 So. 200 East \* Vernal, Utah 84078 \* (435) 789-1017

1" = 40'  
X-Section  
Scale  
1" = 100'  
DATE: 03-03-15  
DRAWN BY: M.O.B.  
REVISED: 03-23-15 T.B.

SOUTHWESTERN ENERGY PRODUCTION COMPANY  
CONSTRUCTION LAYOUT CROSS SECTIONS FOR  
DILL GULCH 6-88 #2-22H ON EXISTING #1-22 PAD  
SECTION 22, T6N, R88W, 6th. P.M.  
NW 1/4 SW 1/4

FIGURE #2



NOTE:  
Topsoil should not be  
Stripped Below Finished  
Grade on Substructure Area.

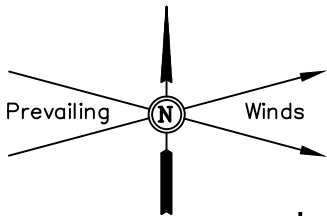
\* NOTE:  
FILL QUANTITY INCLUDES  
5% FOR COMPACTION

APPROXIMATE YARDAGES

(6") Topsoil Stripping (New Construction Only)	=	750 Cu. Yds.
Remaining Location	=	2,340 Cu. Yds.
TOTAL CUT	=	3,090 CU. YDS.
FILL	=	2,340 CU. YDS.

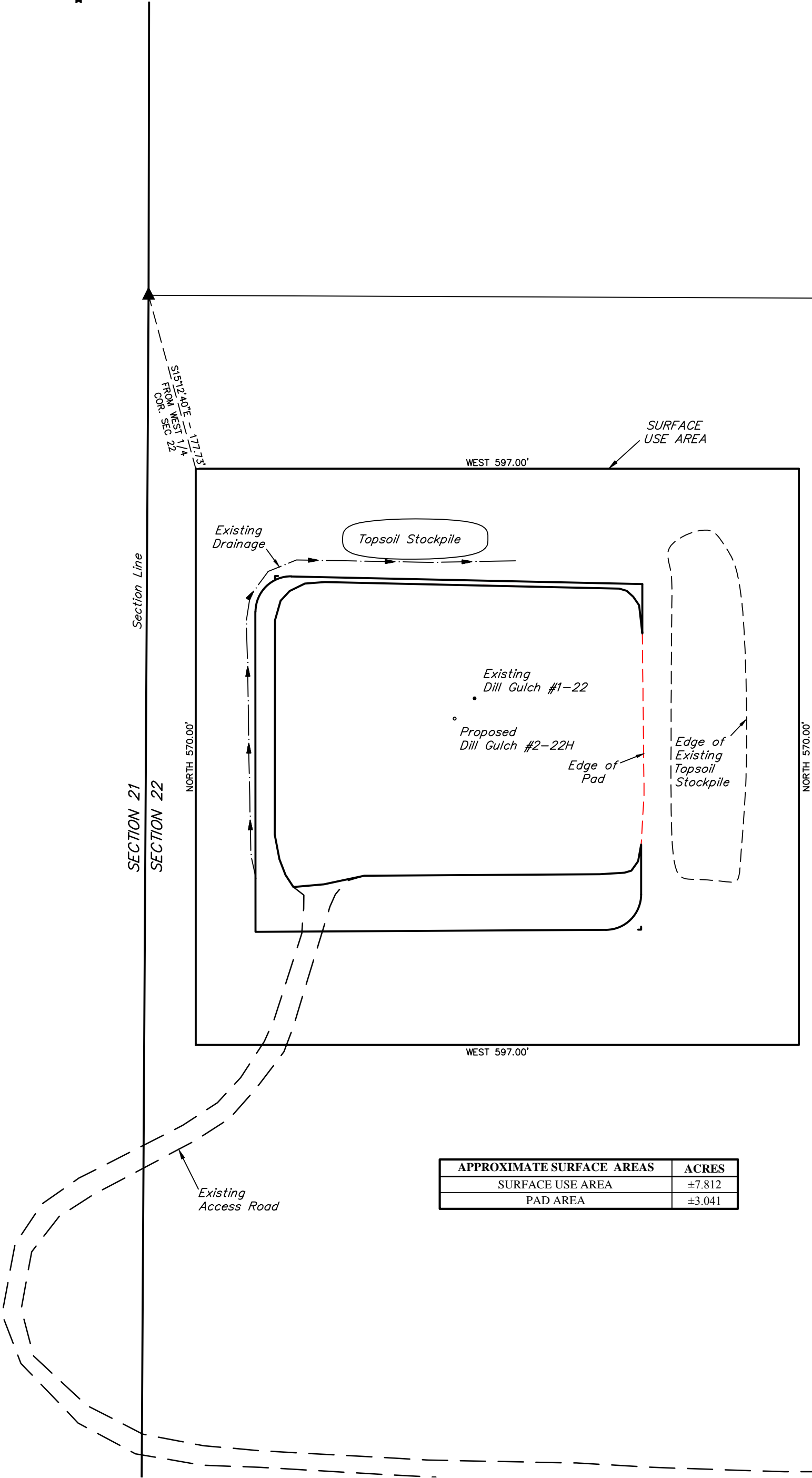
EXCESS MATERIAL	=	750 Cu. Yds.
Topsoil	=	750 Cu. Yds.
EXCESS UNBALANCE (After Interim Rehabilitation)	=	0 Cu. Yds.

APPROXIMATE ACREAGE  
WELL SITE DISTURBANCE = ± 3.318 ACRES



SOUTHWESTERN ENERGY PRODUCTION COMPANY  
SURFACE USE AREA FOR  
DILL GULCH 6-88 #2-22H ON EXISTING #1-22 PAD  
SECTION 22, T6N, R88W, 6th. P.M.  
NW 1/4 SW 1/4

SCALE: 1" = 100'  
DATE: 03-03-15  
DRAWN BY: M.O.B.  
REVISED: 03-23-15 T.B.

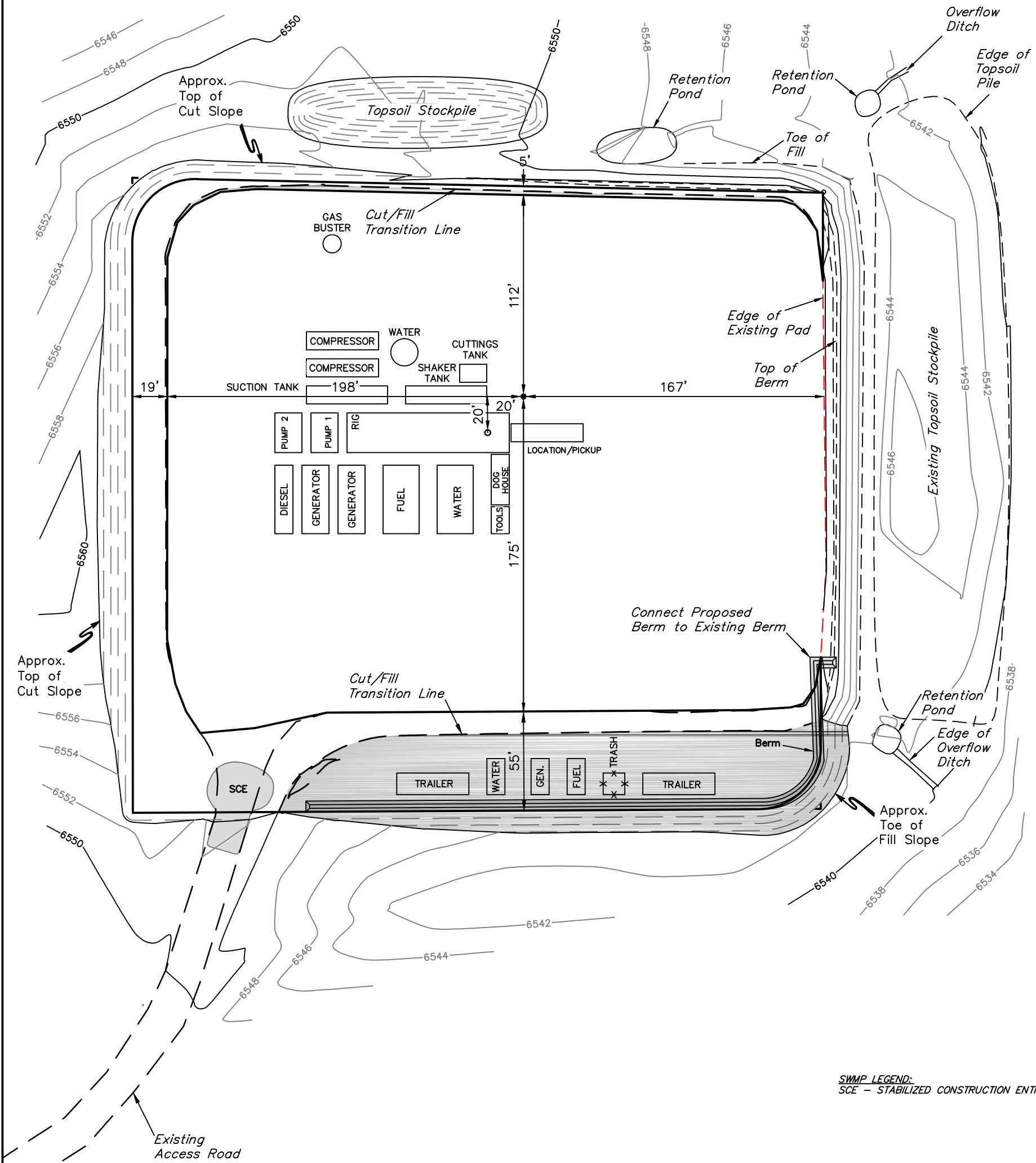
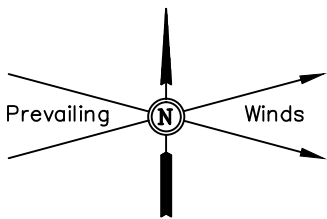


APPROXIMATE SURFACE AREAS	ACRES
SURFACE USE AREA	±7.812
PAD AREA	±3.041

SOUTHWESTERN ENERGY PRODUCTION COMPANY  
TYPICAL RIG LAYOUT FOR  
DILL GULCH 6-88 #2-22H ON EXISTING #1-22 PAD  
SECTION 22, T6N, R88W, 6th. P.M.  
NW 1/4 SW 1/4

FIGURE #3

SCALE: 1" = 60'  
DATE: 03-03-15  
DRAWN BY: M.O.B.  
REVISED: 03-23-15 T.B.  
REVISED: 03-26-15 T.B.

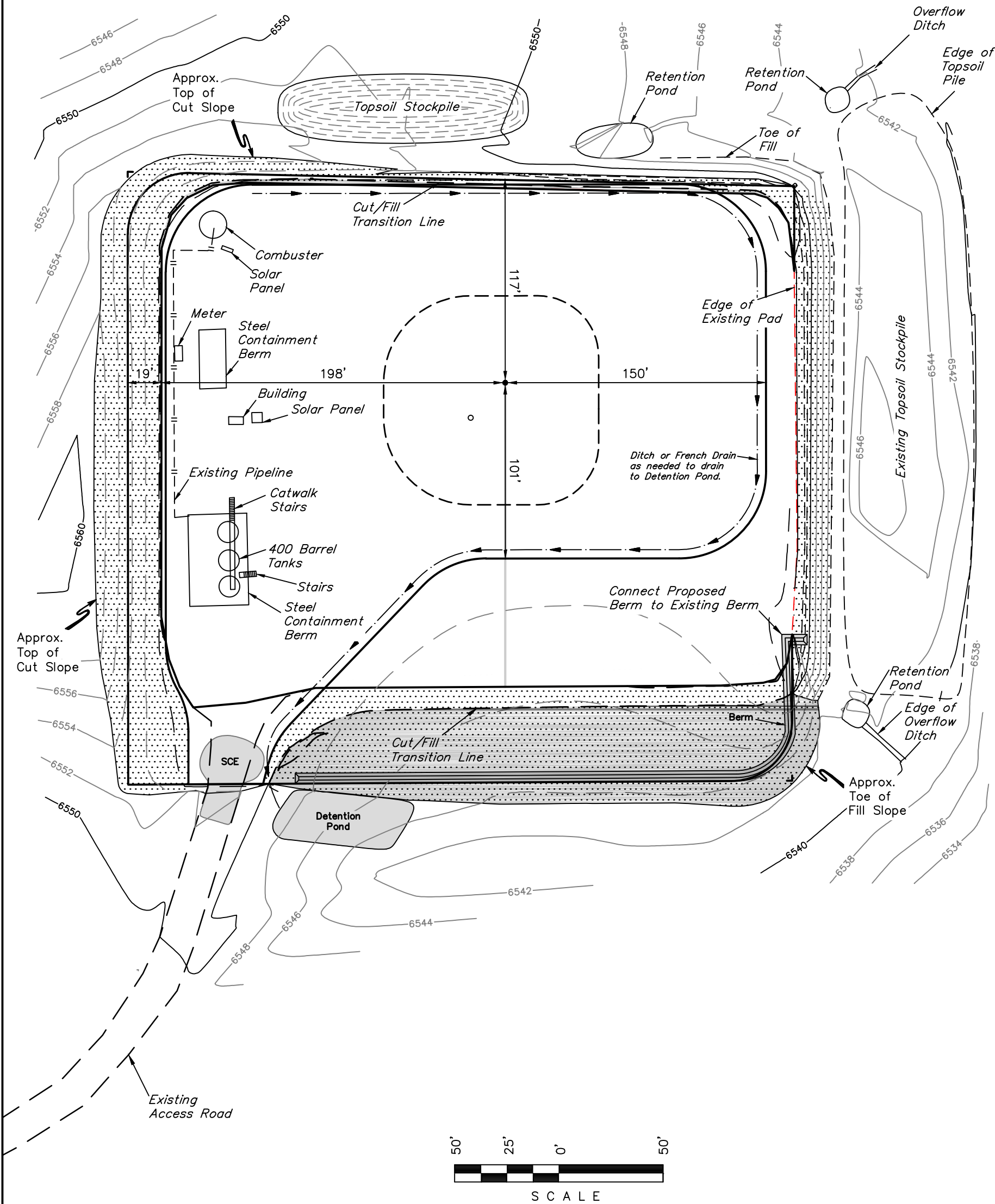
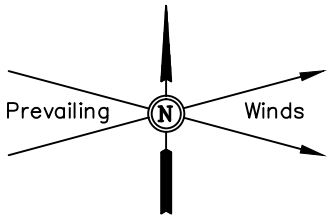


SWMP LEGEND:  
SCE - STABILIZED CONSTRUCTION ENTRANCE

SOUTHWESTERN ENERGY PRODUCTION COMPANY  
RECLAMATION DIAGRAM FOR  
DILL GULCH 6-88 #2-22H ON EXISTING #1-22 PAD  
SECTION 22, T6N, R88W, 6th. P.M.  
NW 1/4 SW 1/4

FIGURE #4

SCALE: 1" = 60'  
DATE: 03-03-15  
DRAWN BY: M.O.B.  
REVISED: 03-23-15 T.B.



RECLAIMED AREA

APPROXIMATE ACREAGES  
UN-RECLAIMED = ± 1.955 ACRES

UINTAH ENGINEERING & LAND SURVEYING  
85 So. 200 East \* Vernal, Utah 84078 \* (435) 789-1017