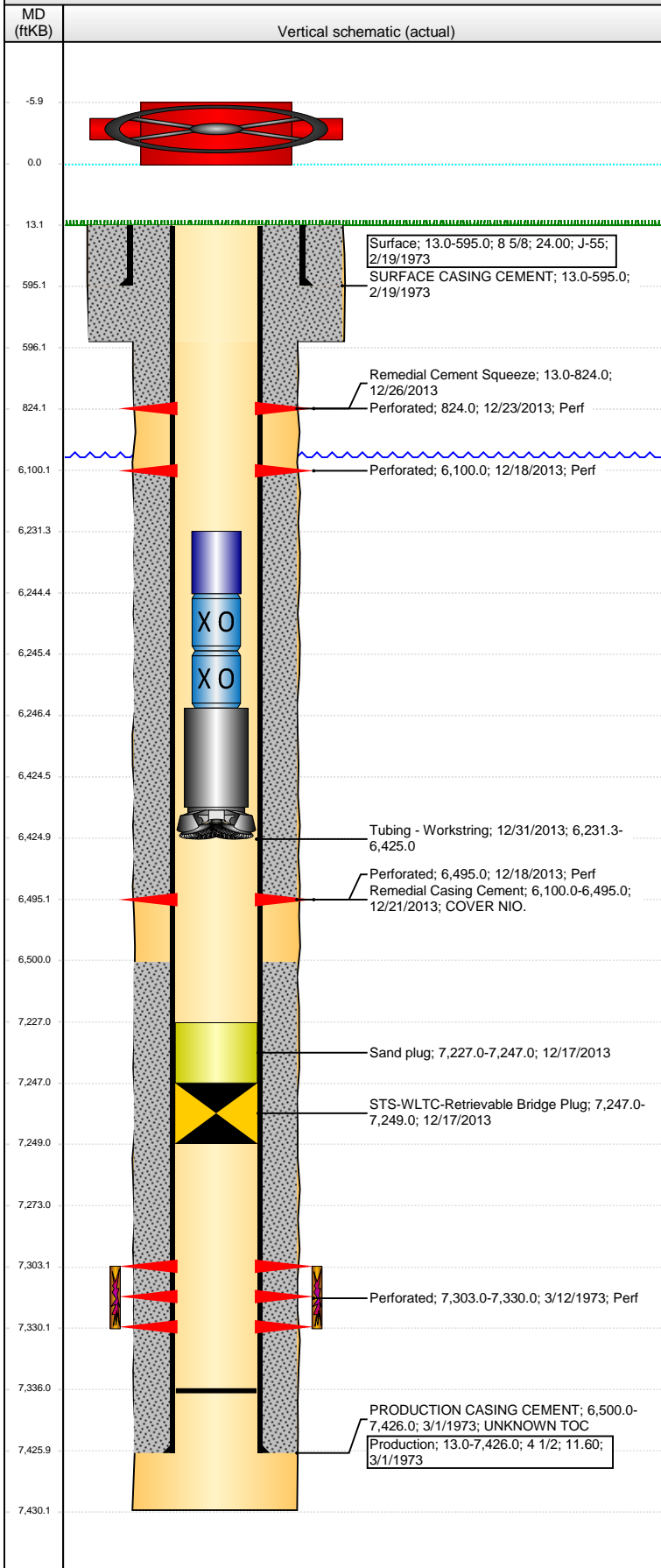


**Well Name: SPIKE STATE DD18-01J**

VERTICAL - ORIGINAL HOLE, 4/14/2015 3:27:08 PM



## Well Header

API	Business Unit	District	Well Config
05-123-07655	DJ BASIN	15	VERTICAL
Original KB Elevation (ft)	KB - GL / MSL (ftKB)	Spud Date	P & A Date
4,820.00	13.00	2/19/1973	

## Comment

VERY LITTLE DATA IN WELL FILE, NO LOGS IN FILE. UNKNOWN 4 1/2 TOC

## Directions To Well

WCR 57 & WCR 40, SOUTH TO THE ARCH, SOUTHEAST 1.2 MILES, NORTH 0.9, EAST 2 MILES, SOUTH 1 MILE, WEST 0.6, SOUTH 0.2, WEST 0.3, SOUTH INTO

## Congressional Location

Quarter 1	Quarter 2	Quarter 3	Quarter 4	Section	Township	Twntshp N...	Range	Rng E/W Dir
		NE	NE	18	3	N	63	W

## Bottom Hole Location

North-South Distance (ft)	From N or S Line	East-West Distance (ft)	From E or W Line

## Plug Back Total Depths

Date	Depth (ftKB)	Method	Com
3/1/1973	7,393.0	TAG	
12/14/2013	7,336.0	TUBING TALLY	

## Wellbore Sections

Section Des	Size (in)	Act Top, MD (ftKB)	Act Btm, MD (ftKB)
SURFACE	12 1/4	13.0	596.0
PRODUCTION	7 7/8	596.0	7,430.0

## Zone Statuses

Zone Name	Status Date	Status	Fluid Type	Job
J SAND	3/20/1973	PR		DRILLING/COMPLETI...
J SAND	12/17/2013	SI		HORIZONTAL WELL...

## Casing Strings

### Surface, 595.0ftKB

Casing Description	Run Date	OD (in)	Wt/Len (l...	Grade	Top, MD (ft...	MD (ftKB)
Surface	2/19/1973	8 5/8	24.00	J-55	13.0	595.0

### Production, 7,426.0ftKB

Casing Description	Run Date	OD (in)	Wt/Len (l...	Grade	Top, MD (ft...	MD (ftKB)
Production	3/1/1973	4 1/2	11.60		13.0	7,426.0

## Cement

Description	Top Depth (ftKB)	Bottom Depth (ftKB)
SURFACE CASING CEMENT	13.0	595.0
PRODUCTION CASING CEMENT	6,500.0	7,426.0
Remedial Casing Cement	6,100.0	6,495.0
Remedial Cement Squeeze	13.0	824.0

## Tubing Strings

Tubing Description	Run Date	String...	ID (in)	Wt (lb/ft)	Grade	Len (ft)	Set De...
Tubing - Production		1.9	1.610	2.90		7,260.00	
Tubing - Workstring	12/31/2013	3 1/8	1.250	28.00		193.72	

## Tubing Components

Item Des	OD (in)	Wt (lb/ft)	Grade	Jts	Len (ft)	Btm (ftKB)	Btm (TVD) (ftKB)
EUE 8rd Tubing	2 3/8	4.70	L/N-80	1	13.00	6,244.3	
CHANGE OVER	2 3/8	4.70	N-80	1	1.05	6,245.3	
CHANGE OVER	2 3/8	4.70	N-80		0.95	6,246.3	
DRILL COLLARS	3 1/8	28.00		6	178.42	6,424.7	
BIT	3 7/8			1	0.30	6,425.0	

## Perforation Data

Zone	Bnch/St g	Entered Shot Total	Top (ftKB)	Btm (ftKB)	Date
<zonename>, ORIGINAL HOLE			824.00	824.00	12/23/2013
<zonename>, ORIGINAL HOLE			6,100.00	6,100.00	12/18/2013
<zonename>, ORIGINAL HOLE			6,495.00	6,495.00	12/18/2013
J SAND, ORIGINAL HOLE			7,303.00	7,330.00	3/12/1973

**Well Name: SPIKE STATE DD18-01J**

VERTICAL - ORIGINAL HOLE, 4/14/2015 3:27:10 PM

## Stimulations & Treatments

Date 3/14/1973	Zone J SAND, ORIGINAL HOLE	Primary Job Type DRILLING/COMPLETION - ORIGINAL
Technical Result	Tech Result Details	Tech Result Note
Comment		

## Other In Hole

Run Date	Des	OD (in)	Top (ftKB)	Btm (ftKB)
12/17/2013	Sand plug	3.99	7,227.0	7,247.0
12/17/2013	STS-WLTC-Retrieveable Bridge Plug	3.99	7,247.0	7,249.0

## Logs

Date	Type	Top, MD (ftKB)	Btm, MD (ftKB)
3/12/1973	CEMENT BOND	6,300.0	7,365.0
3/2/2011			

