



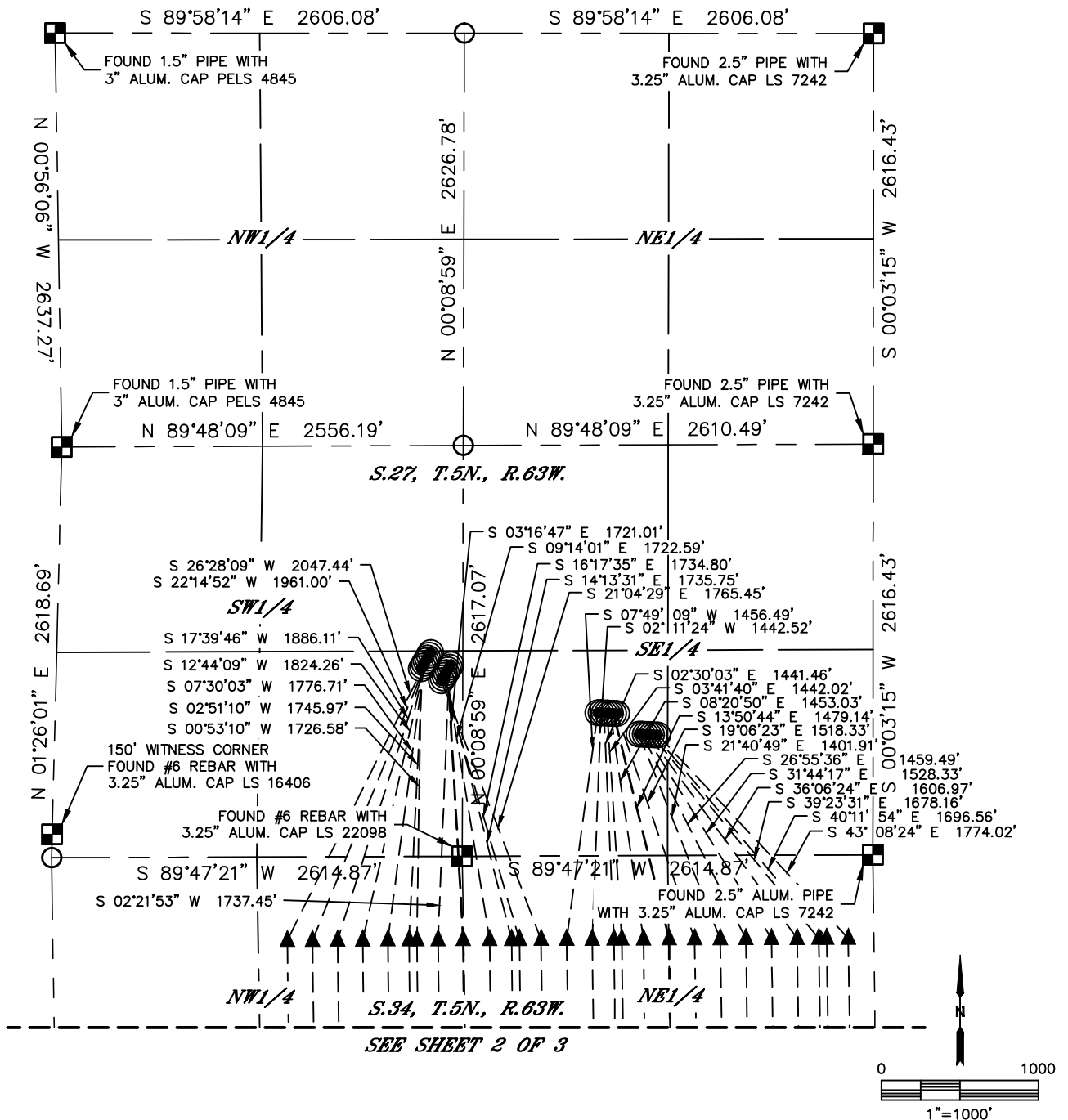
Lat40°, Inc. 6250 W. 10th Street, Unit 2, Greeley, CO 970-515-5294

MULTI-WELL PLAN

NORTH PLATTE T-27 PAD

THIS MAP DOES NOT REPRESENT A BOUNDARY SURVEY

SECTION: 27
TOWNSHIP: 5N
RANGE: 63W
6TH. P.M.
WELD COUNTY, CO



#	WELL NAME	SHL FOOTAGE			SHL LAT °	SHL LONG °	SHL PDOP	SHL ELEV	SHL 1/4/1/4	
1	NORTH PLATTE F-J-34HNC	1298	FSL	2380	FWL	40.36678	-104.42271	2.1	4542	SESW
2	NORTH PLATTE F21-J24-34HNB	1281	FSL	2371	FWL	40.36674	-104.42275	2.2	4542	SESW
3	NORTH PLATTE F21-J24-34HNC	1264	FSL	2361	FWL	40.36669	-104.42279	2.2	4542	SESW
4	NORTH PLATTE 21-24-34HNB	1247	FSL	2351	FWL	40.36664	-104.42283	2.2	4541	SESW
5	NORTH PLATTE 21-24-34HNC	1230	FSL	2341	FWL	40.36660	-104.42286	2.3	4542	SESW
6	NORTH PLATTE K21-024-34HC	1212	FSL	2332	FWL	40.36655	-104.42290	2.3	4541	SESW
7	NORTH PLATTE K21-024-34HNB	1195	FSL	2322	FWL	40.36650	-104.42294	2.3	4541	SESW
9	NORTH PLATTE K21-024-34HNC	1205	FSL	2502	FWL	40.36652	-104.42229	2.0	4542	SESW
10	NORTH PLATTE K-O-34HNB	1188	FSL	2492	FWL	40.36648	-104.42233	1.9	4541	SESW
11	NORTH PLATTE K-O-34HNC	1170	FSL	2482	FWL	40.36643	-104.42237	1.9	4541	SESW
12	NORTH PLATTE K31-034-34HC	1153	FSL	2473	FWL	40.36638	-104.42240	1.9	4542	SESW
13	NORTH PLATTE K31-034-34HNB	1136	FSL	2463	FWL	40.36634	-104.42244	1.9	4541	SESW
14	NORTH PLATTE K31-034-34HNC	1119	FSL	2453	FWL	40.36629	-104.42248	1.9	4541	SESW



Lat40°, Inc. 6250 W. 10th Street, Unit 2, Greeley, CO 970-515-5294

MULTI-WELL PLAN

NORTH PLATTE T-27 PAD

SECTION: 27
TOWNSHIP: 5N
RANGE: 63W
6TH. P.M.
WELD COUNTY, CO

