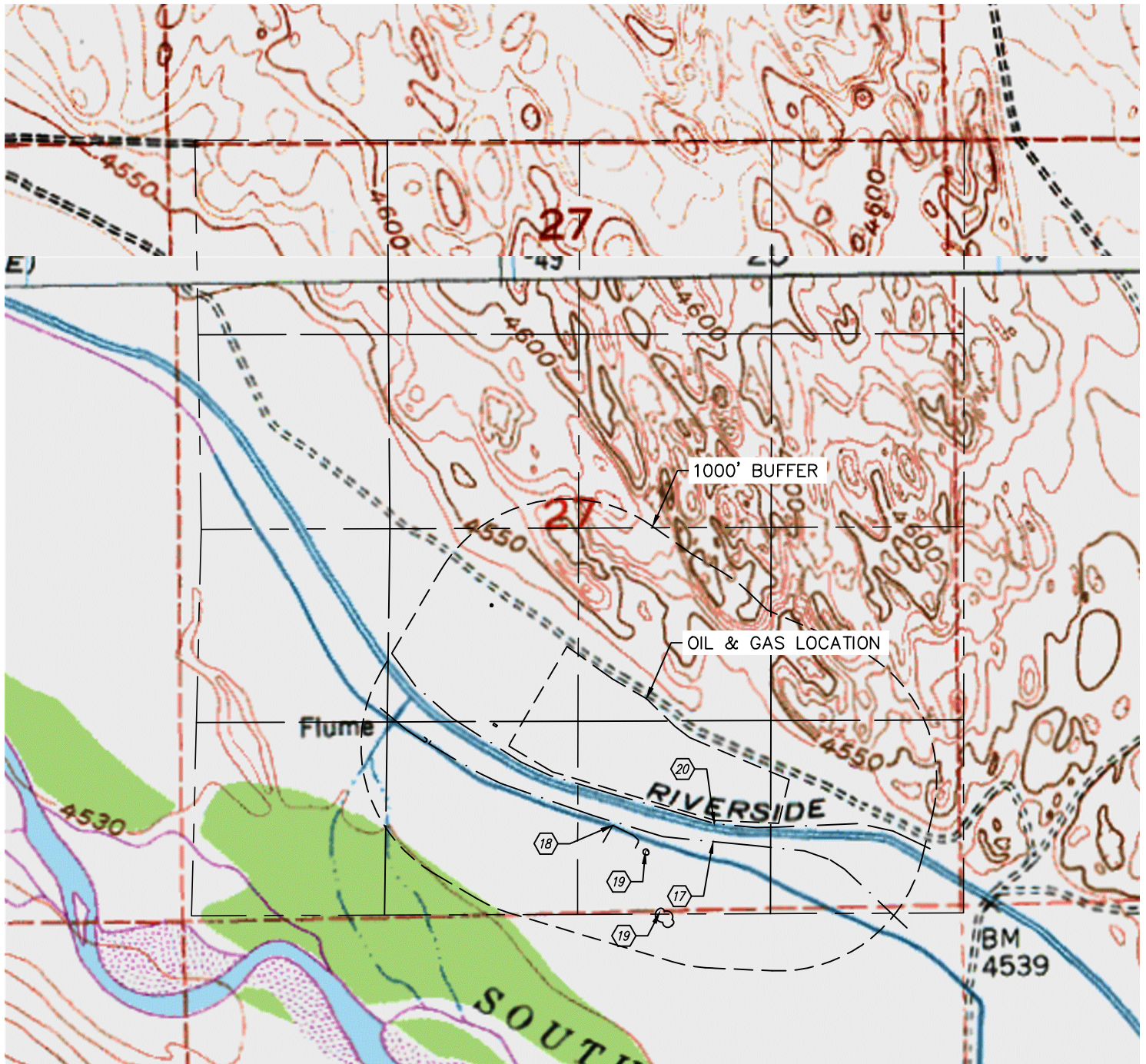




HYDROLOGY MAP

NORTH PLATTE T-27 PAD

SECTION: 27
TOWNSHIP: 5N
RANGE: 63W
6TH. P.M.
WELD COUNTY, CO



DISTANCES MEASURED FROM THE EDGE OF OIL & GAS LOCATION.

- ⑰ DITCH 145' S
- ⑱ POND 231' SW
- ⑲ LOW AREA 341' & 702' SW
- ⑳ RIVERSIDE INTAKE CANAL 21' S

