



Lat40°, Inc. 6250 W. 10th Street, Unit 2, Greeley, CO 970-515-5294

ACCESS ROAD MAP

NORTH PLATTE T-27 PAD

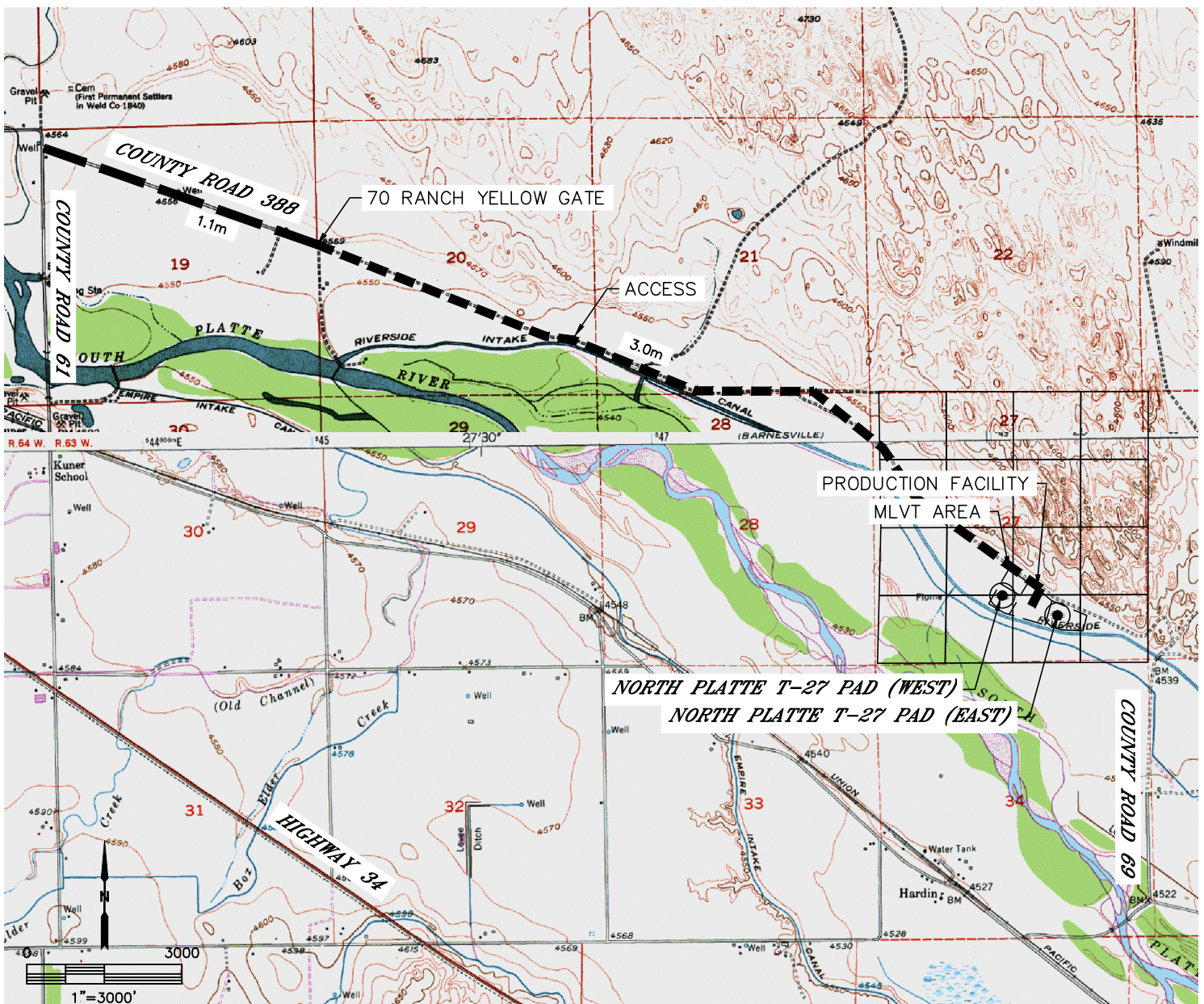
SECTION: 27
TOWNSHIP: 5N
RANGE: 63W
6TH. P.M.
WELD COUNTY, CO

EXISTING WELLS:
N/A

PROPOSED WELLS:
NORTH PLATTE F-J-34HNC, NORTH PLATTE F21-J24-34HNB, NORTH PLATTE F21-J24-34HNC,
NORTH PLATTE 21-24-34HNB, NORTH PLATTE 21-24-34HNC, NORTH PLATTE K21-O24-34HC
NORTH PLATTE K21-O24-34HNB, NORTH PLATTE B1-27, NORTH PLATTE K21-O24-34HNC,
NORTH PLATTE K-O-34HNB, NORTH PLATTE K-O-34HNC, NORTH PLATTE K31-O34-34HC,
NORTH PLATTE K31-O34-34HNB, NORTH PLATTE K31-O34-34HNC, NORTH PLATTE 31-34-34HNB,
NORTH PLATTE 31-34-34HNC, NORTH PLATTE P31-T34-34HC, NORTH PLATTE P31-T34-34HNB,
NORTH PLATTE P31-T34-34HNC, NORTH PLATTE P-T-34HNB, NORTH PLATTE P-T-34HNC,
NORTH PLATTE P41-T44-34HC, NORTH PLATTE P41-T44-34HNC, NORTH PLATTE 41-44-34HNB,
NORTH PLATTE 41-44-34HNC, NORTH PLATTE U41-Y44-34HNB, NORTH PLATTE U41-Y44-34HC
NORTH PLATTE U41-Y34-34HNC

DRIVING DIRECTIONS TO NORTH PLATTE T-27 PAD

FROM THE INTERSECTION OF COUNTY ROAD 61 AND COUNTY ROAD 388, DRIVE SOUTHEASTERLY ALONG
COUNTY ROAD 388 FOR 1.1 MILES TO THE ENTRANCE OF THE 70 RANCH (YELLOW GATE), THENCE CONTINUE
SOUTHEASTERLY ALONG THE 70 RANCH MAIN ACCESS ROAD FOR 3.0 MILES TO THE ACCESS OF THE NORTH
PLATTE T-27 PAD ON THE SOUTH SIDE OF THE MAIN ACCESS ROAD.





Lat40°, Inc. 6250 W. 10th Street, Unit 2, Greeley, CO 970-515-5294

ACCESS ROAD MAP

NORTH PLATTE T-27 PAD

SECTION: 27
TOWNSHIP: 5N
RANGE: 63W
6TH. P.M.
WELD COUNTY, CO

