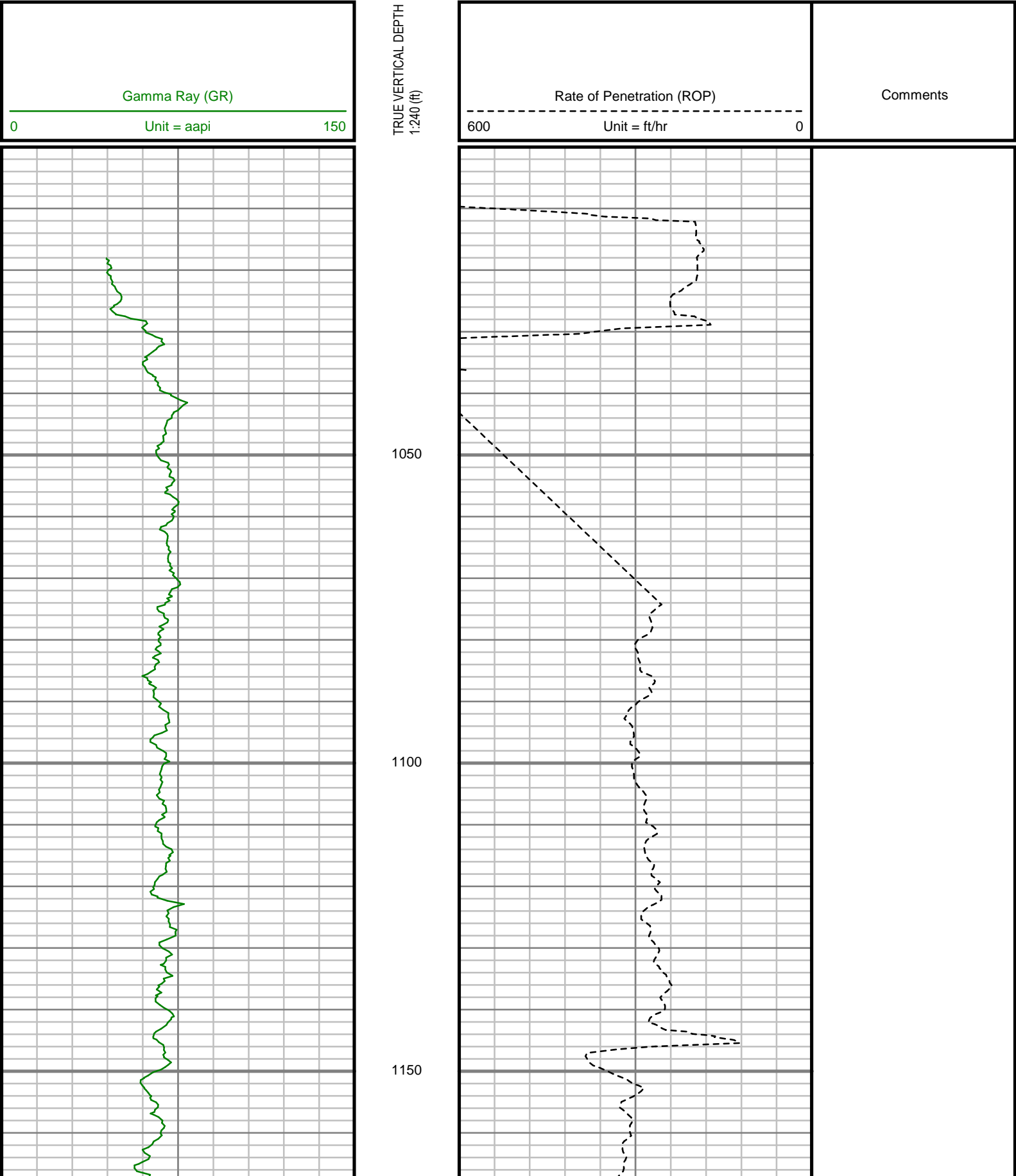


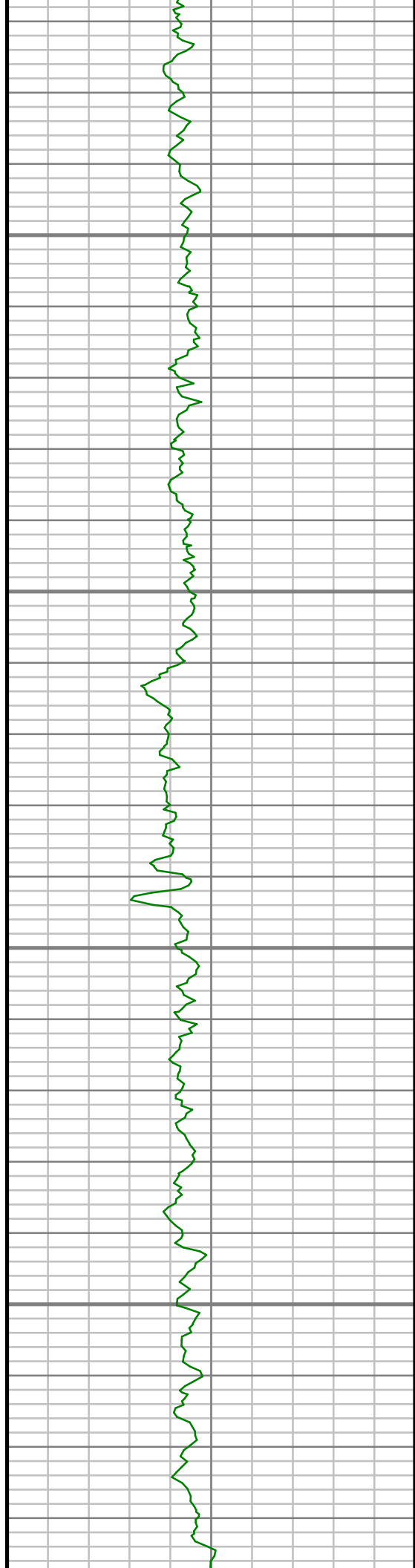




All interpretations are opinions based on inferences from electrical or other measurements and we cannot, and do not guarantee the accuracy or correctness of any interpretations, and we shall not, except in the case of gross or willful negligence on our part, be liable or responsible for any loss, costs, damages or expenses incurred or sustained by anyone resulting from any interpretation made by any of our officers, agents or employees. These interpretations are also subject to our general terms and conditions as set out in our current price schedule.

ENCAN OIL AND GAS (U.S.A.) INC  
NEWNAM 2I-32H-C246  
WATTENBERG FIELD  
WELD COUNTY, COLORADO  
05-123-39780



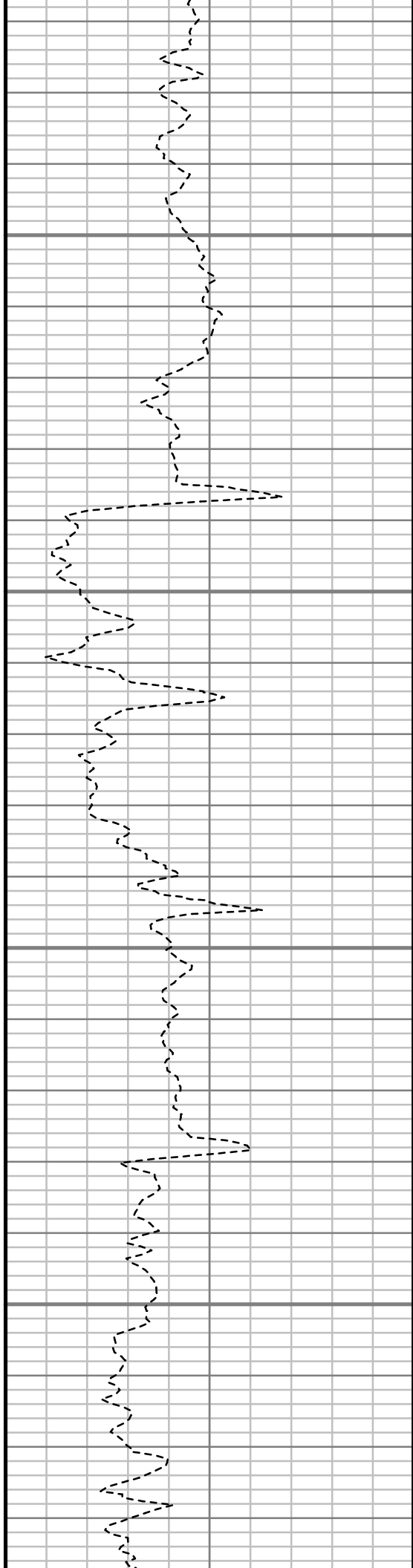


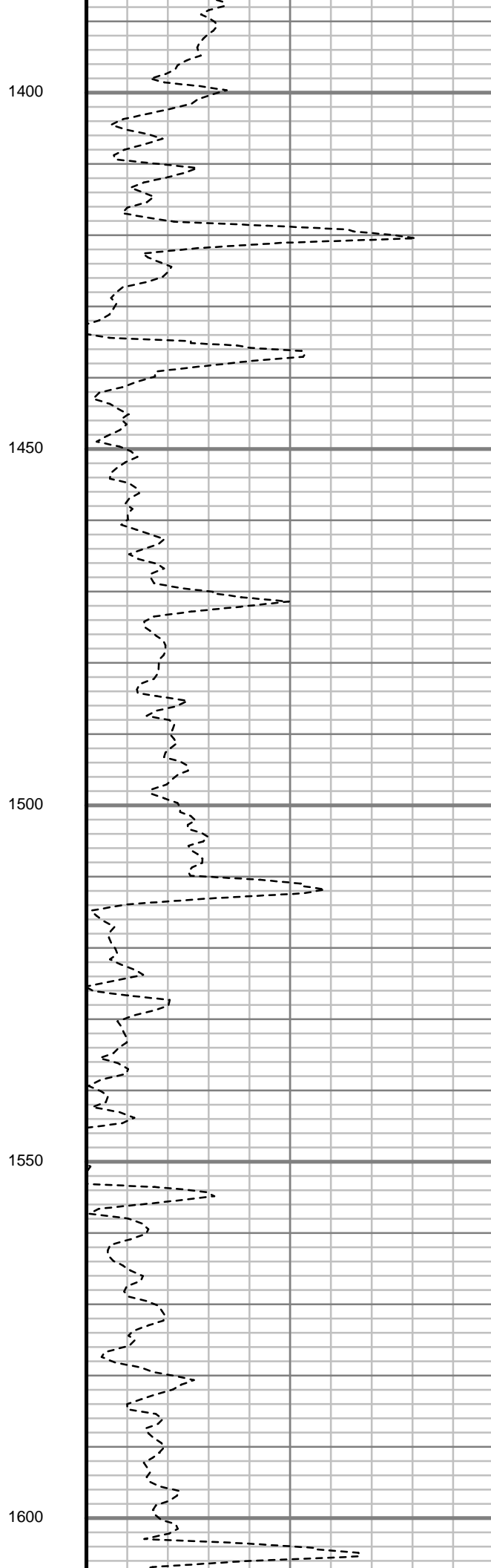
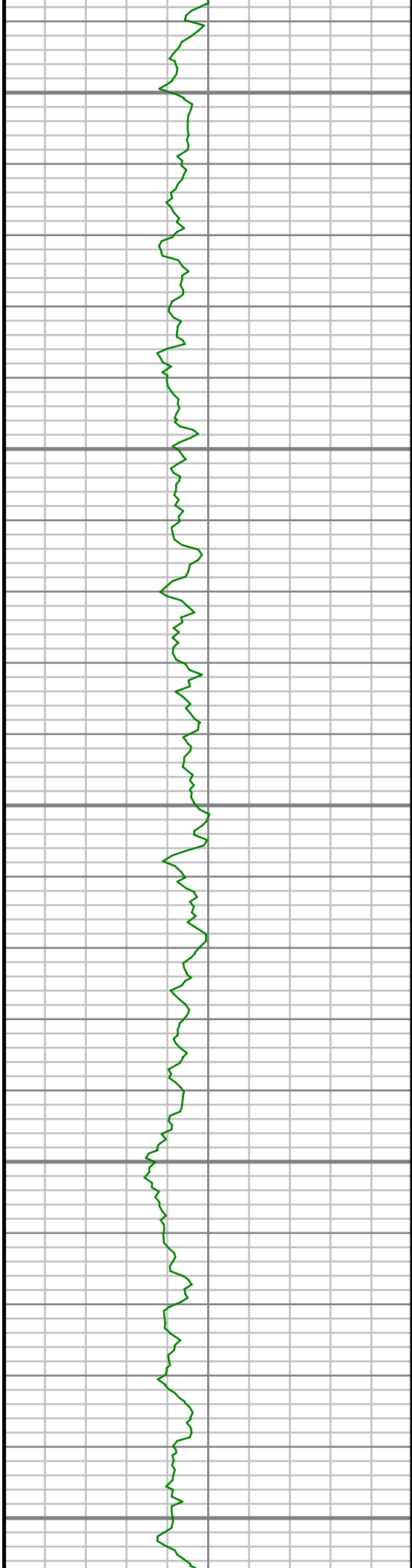
1200

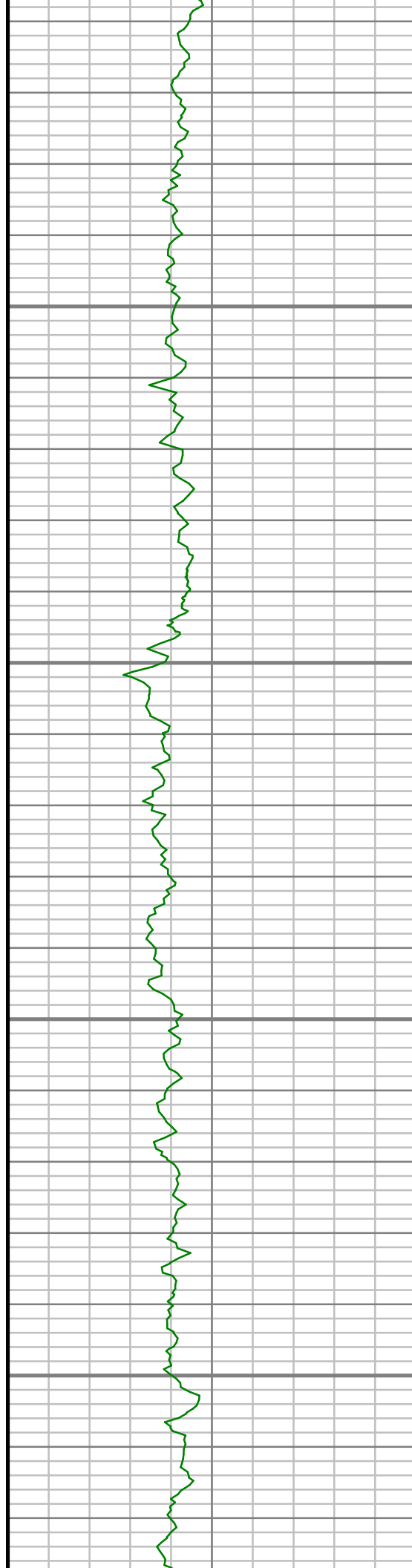
1250

1300

1350





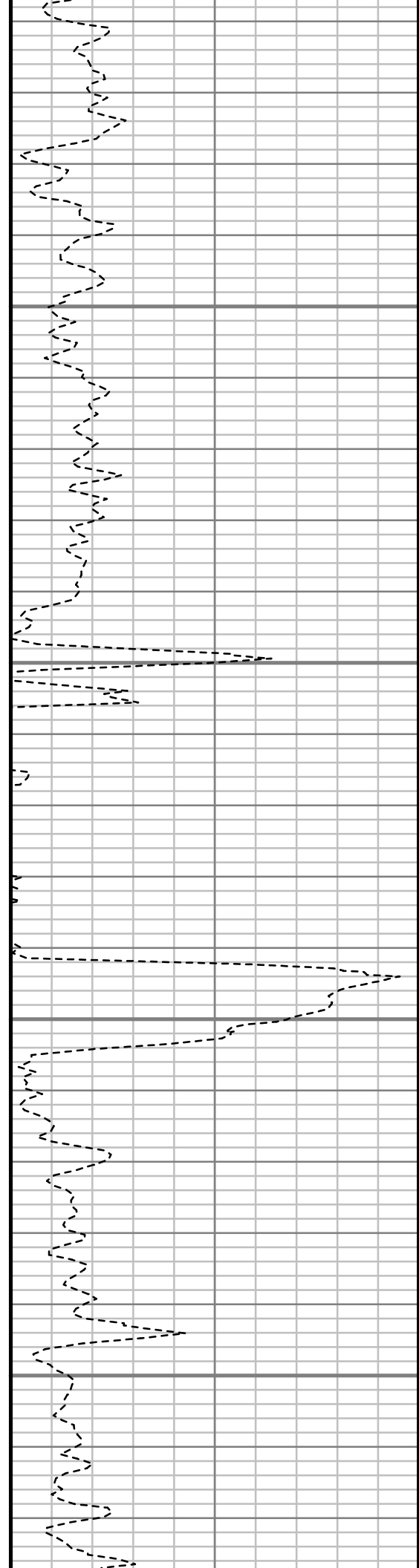


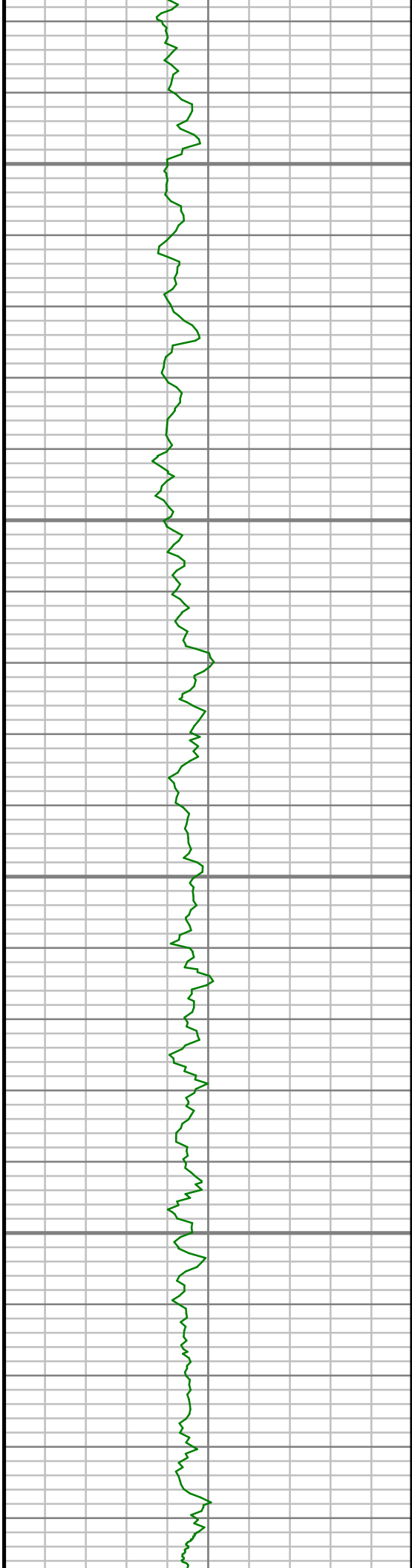
1650

1700

1750

1800



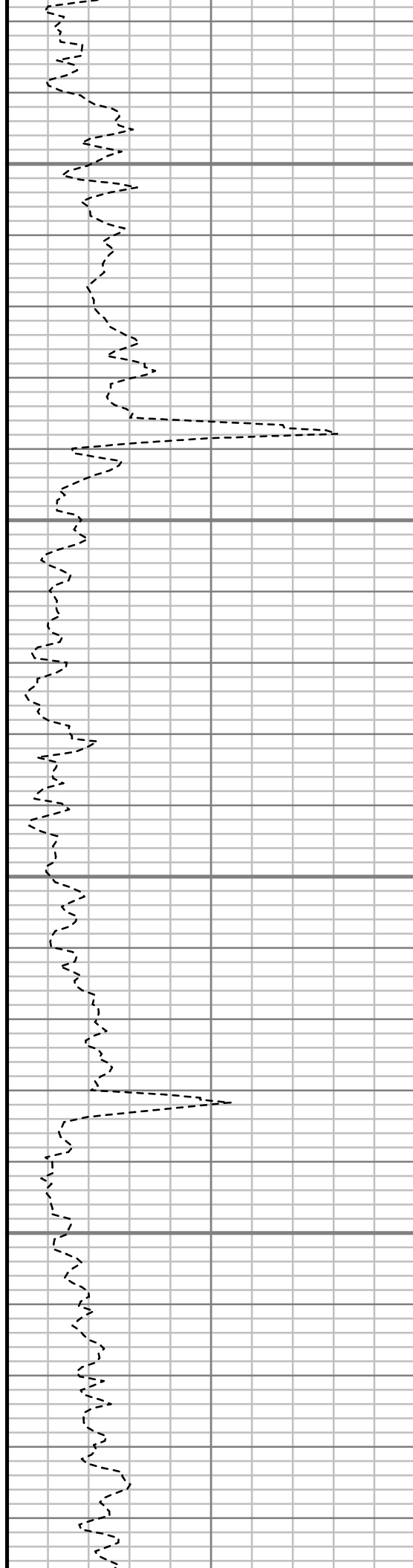


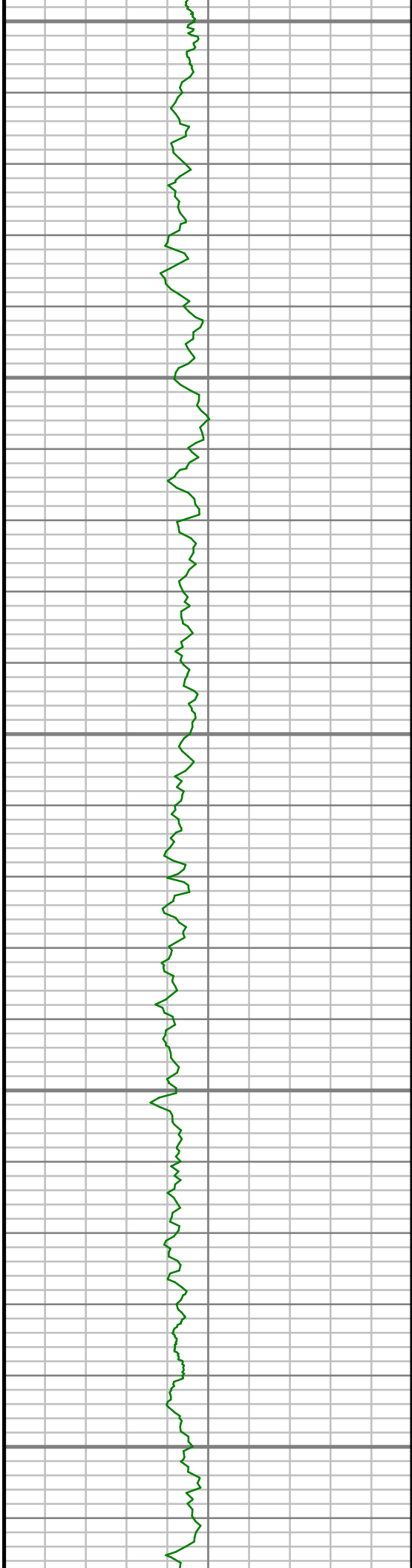
1850

1900

1950

2000





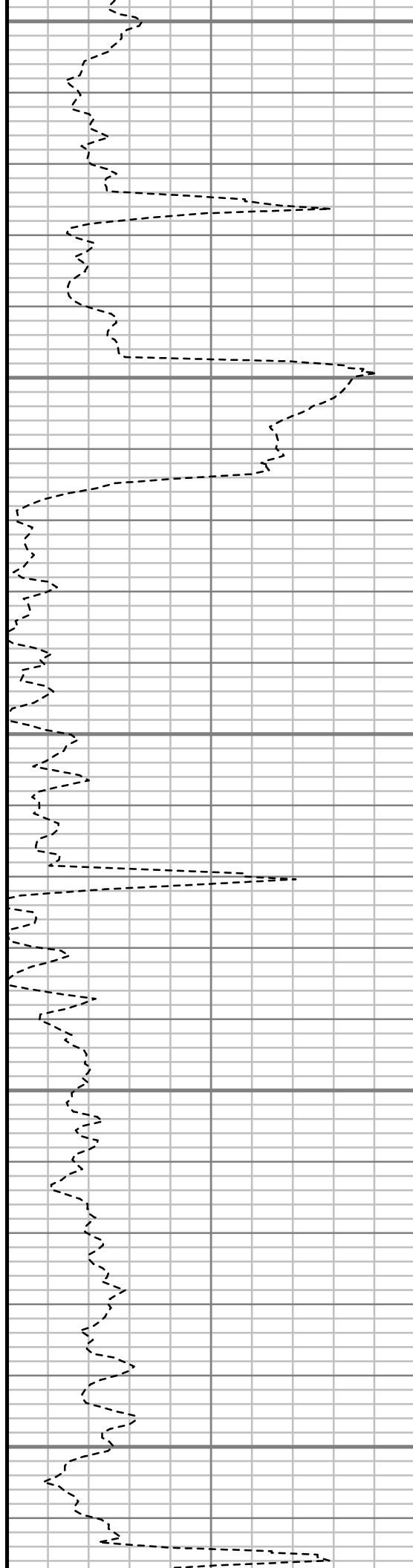
2050

2100

2150

2200

2250





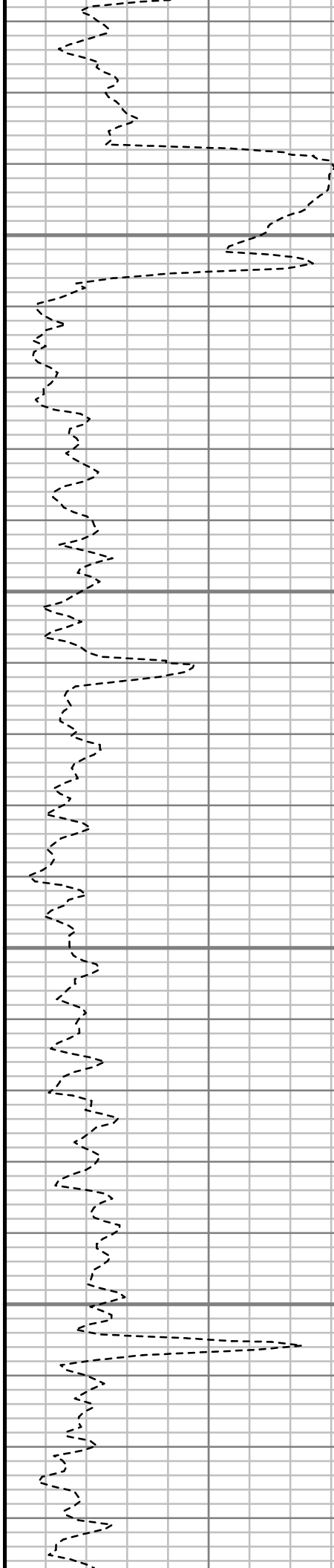


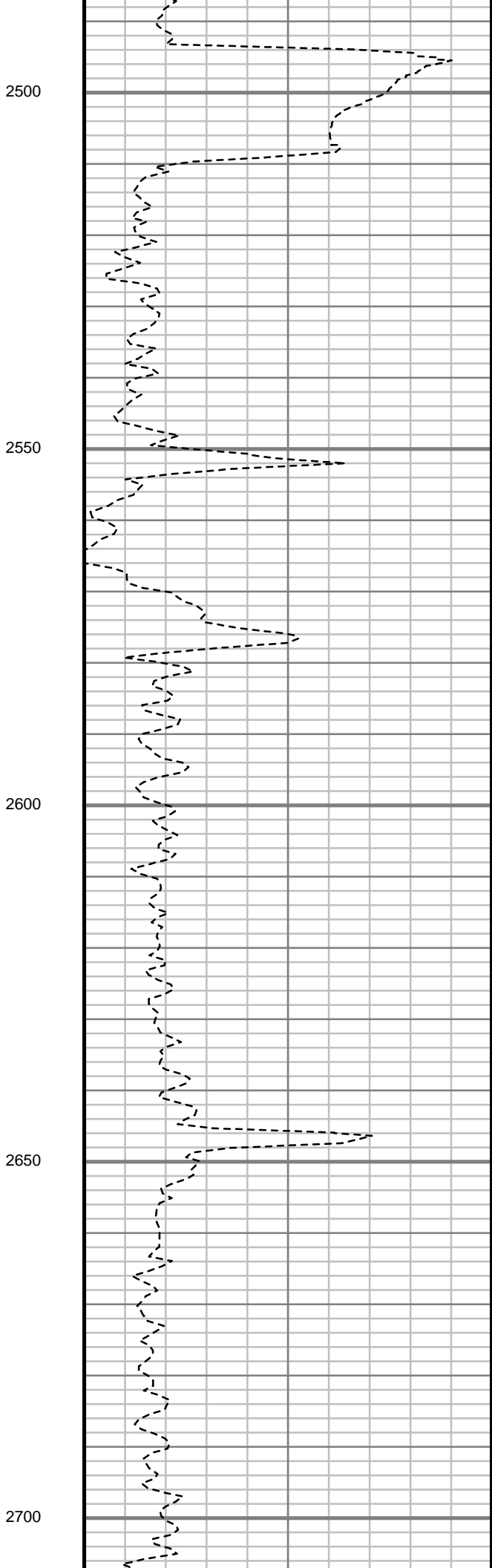
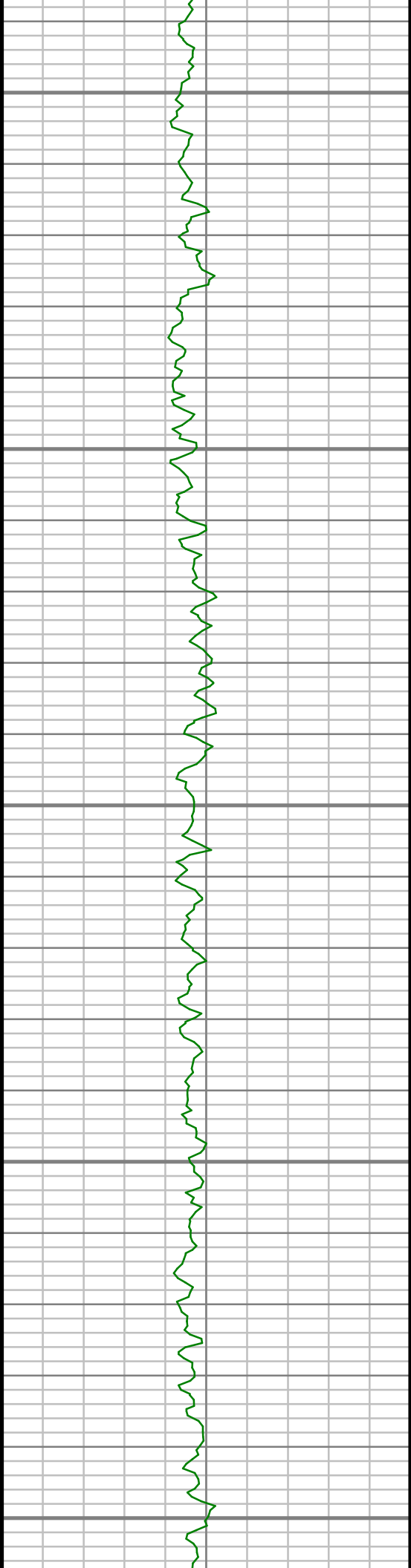
2300

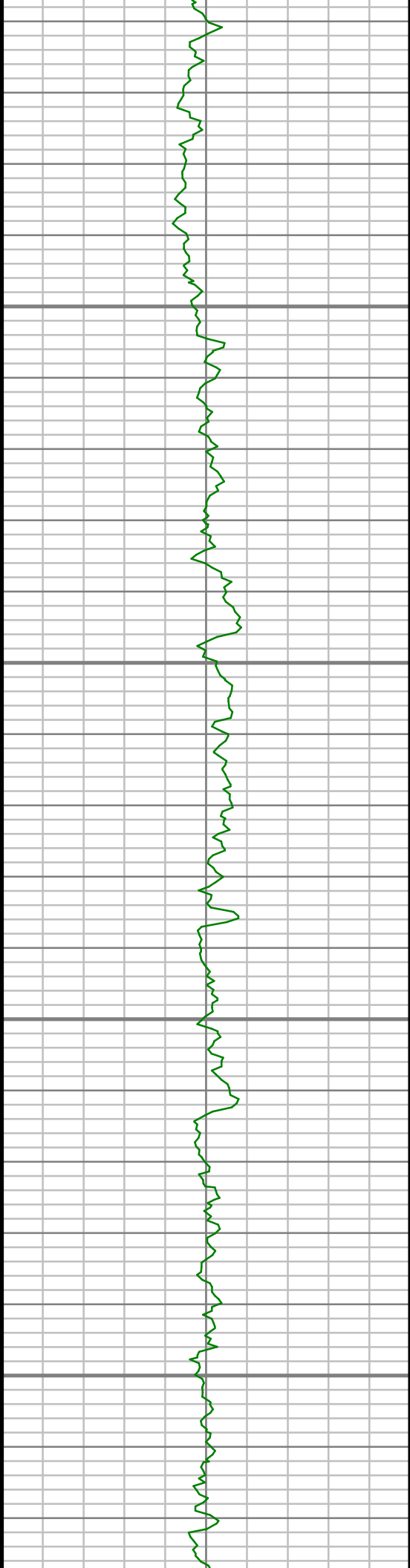
2350

2400

2450





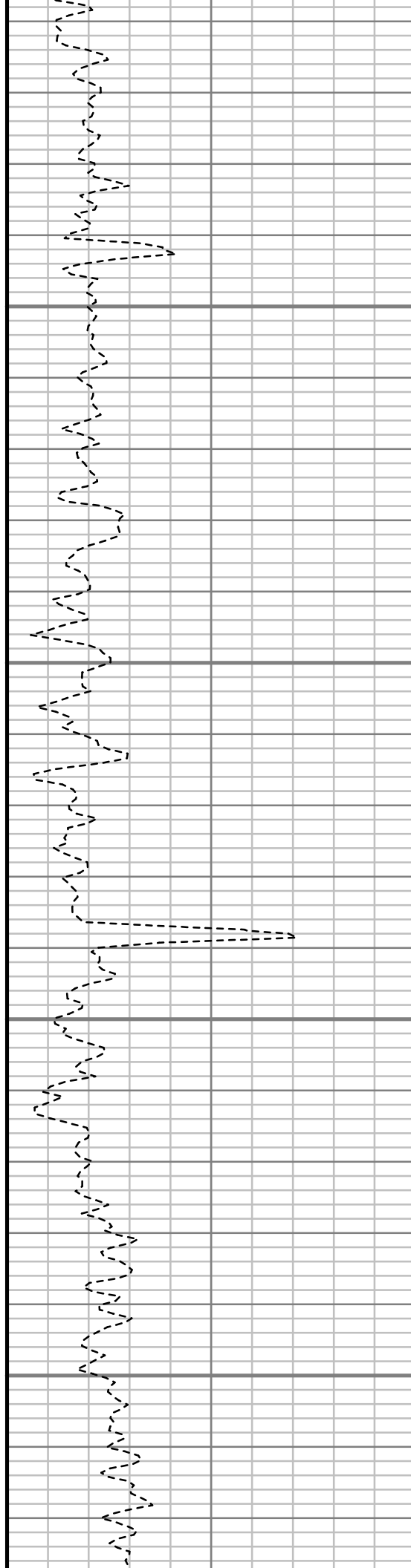


2750

2800

2850

2900



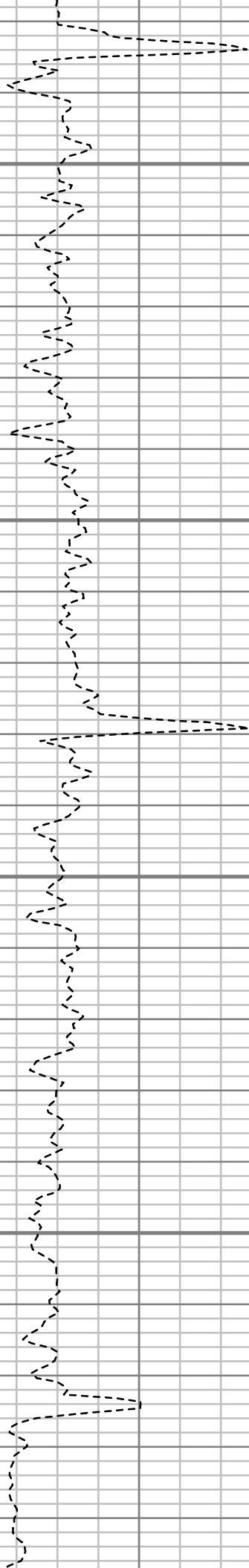


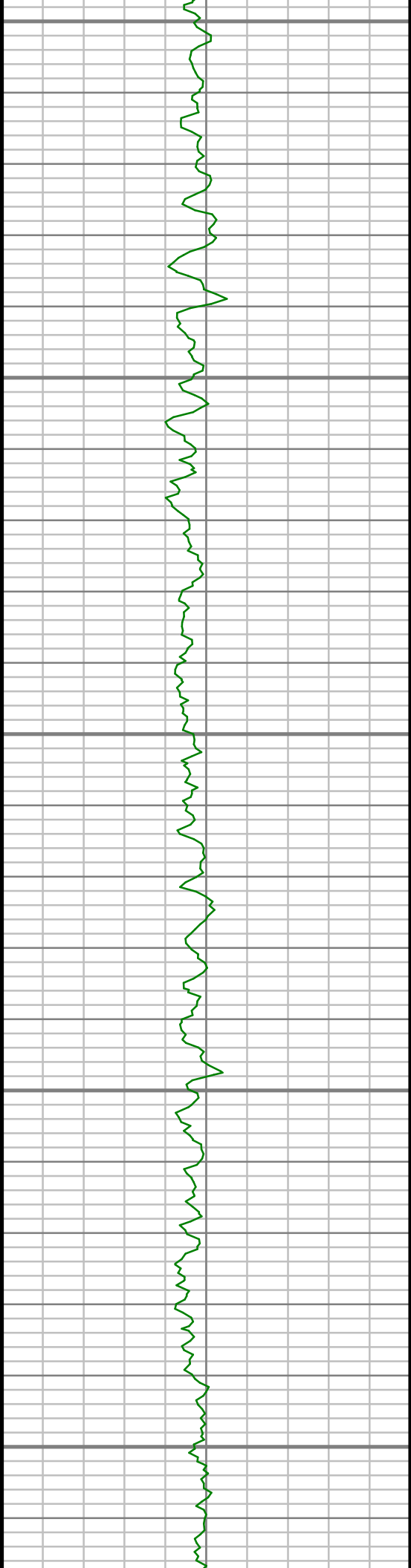
2950

3000

3050

3100





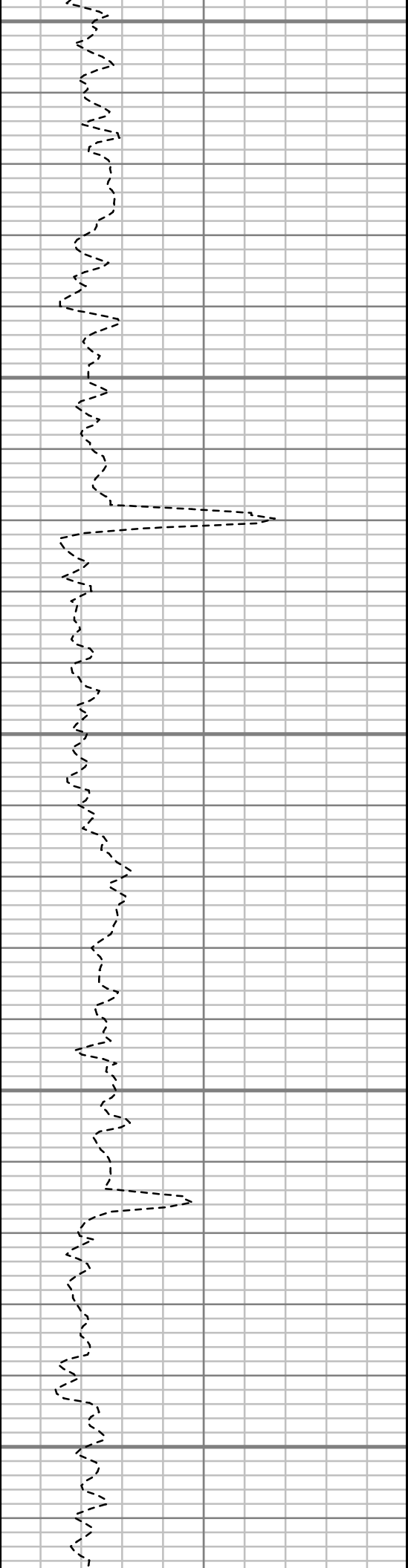
3150

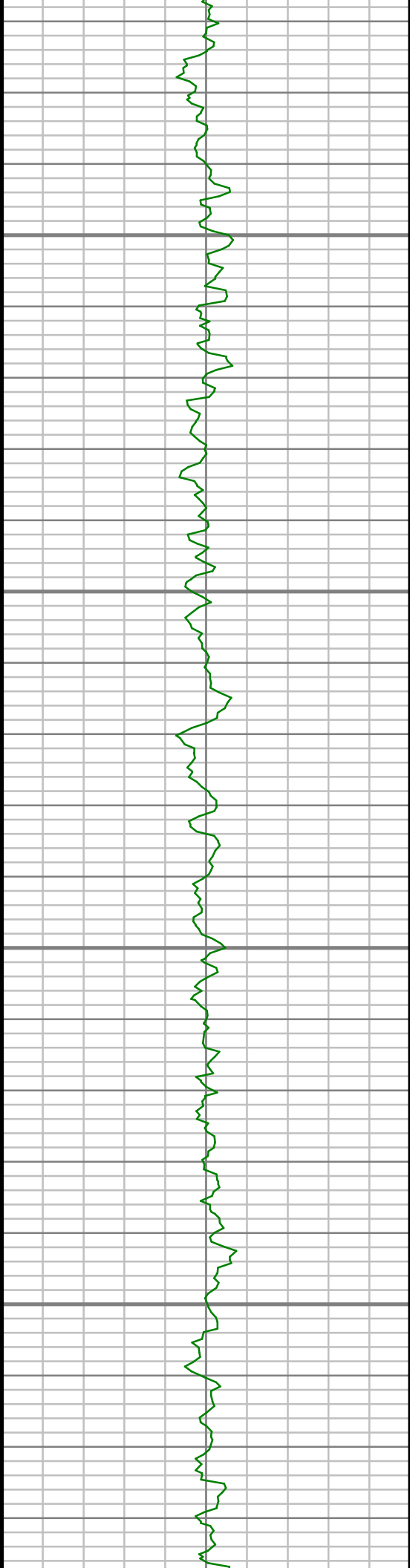
3200

3250

3300

3350



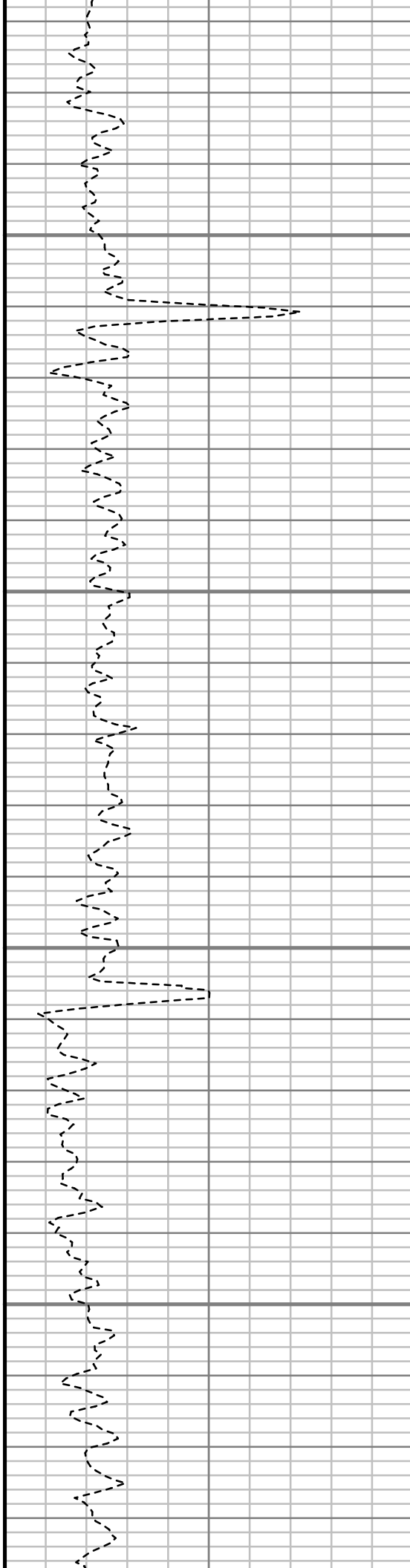


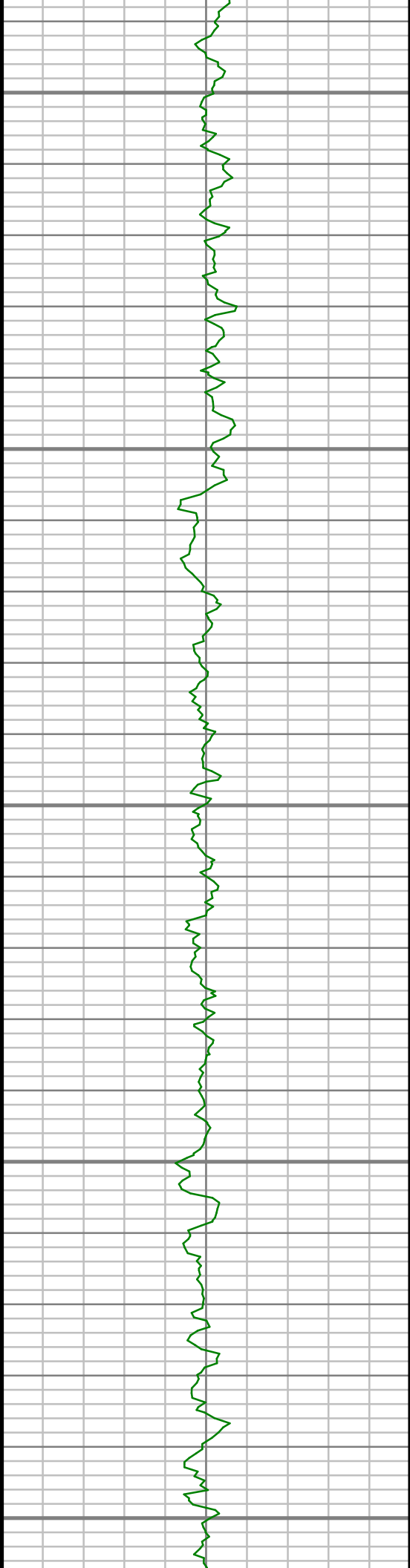
3400

3450

3500

3550





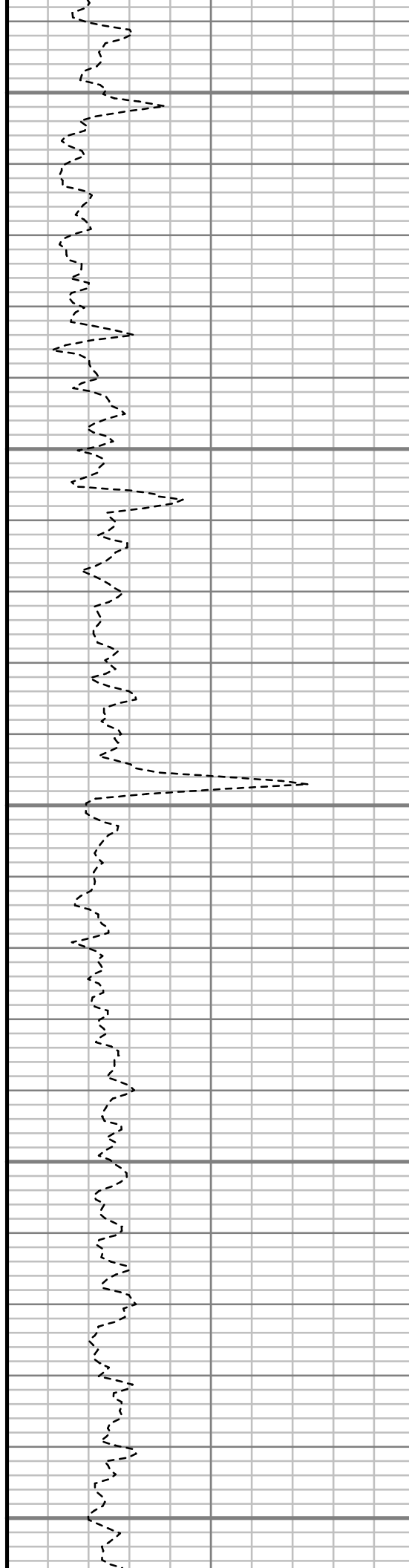
3600

3650

3700

3750

3800



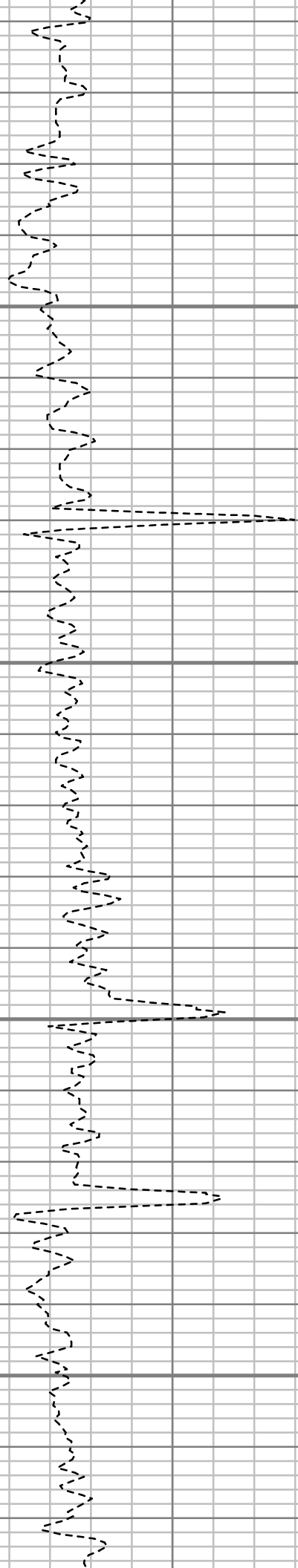


3850

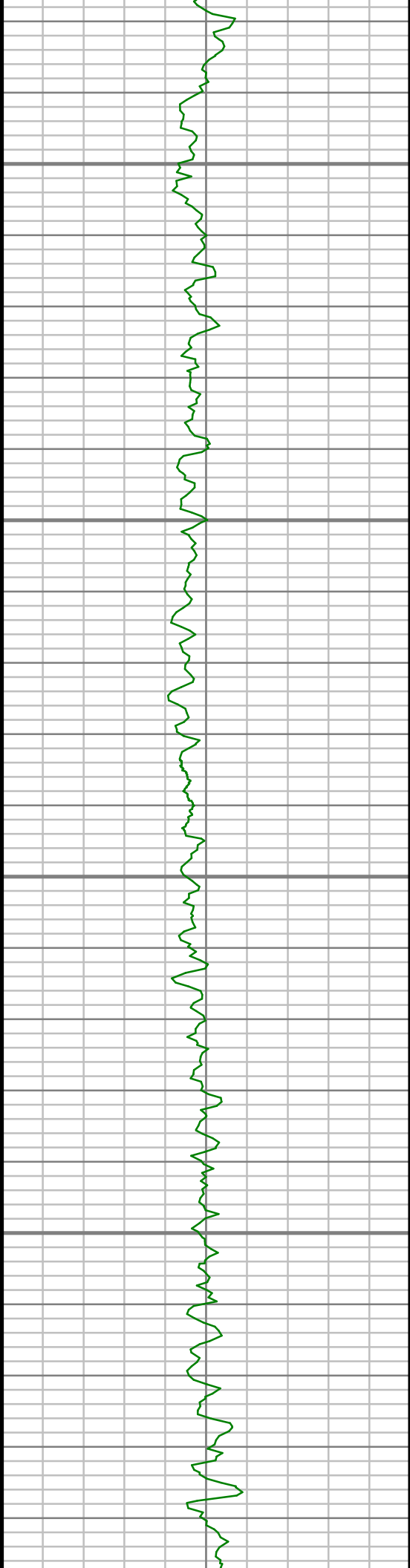
3900

3950

4000





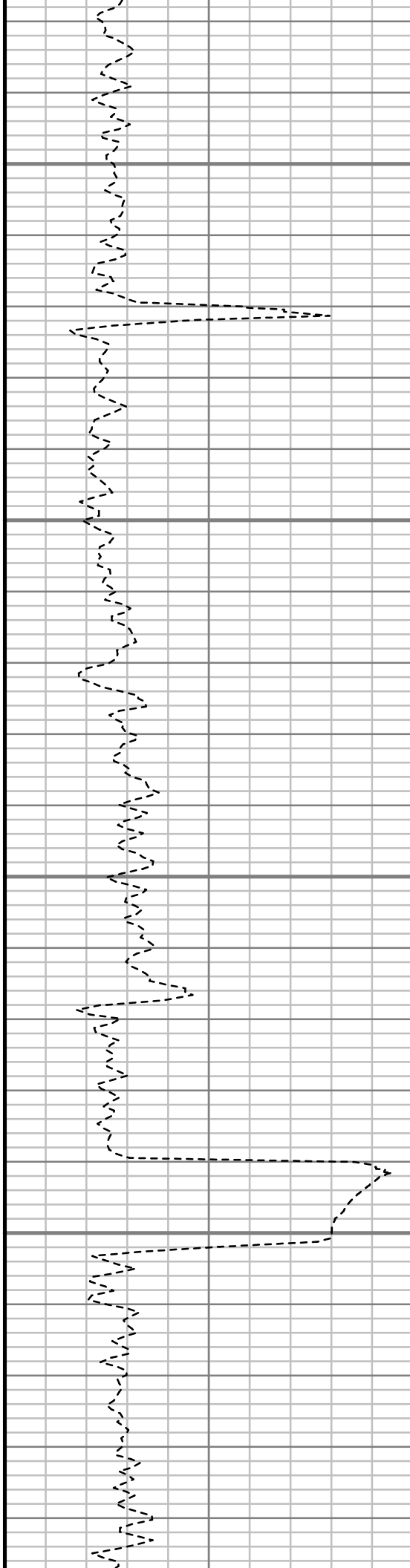


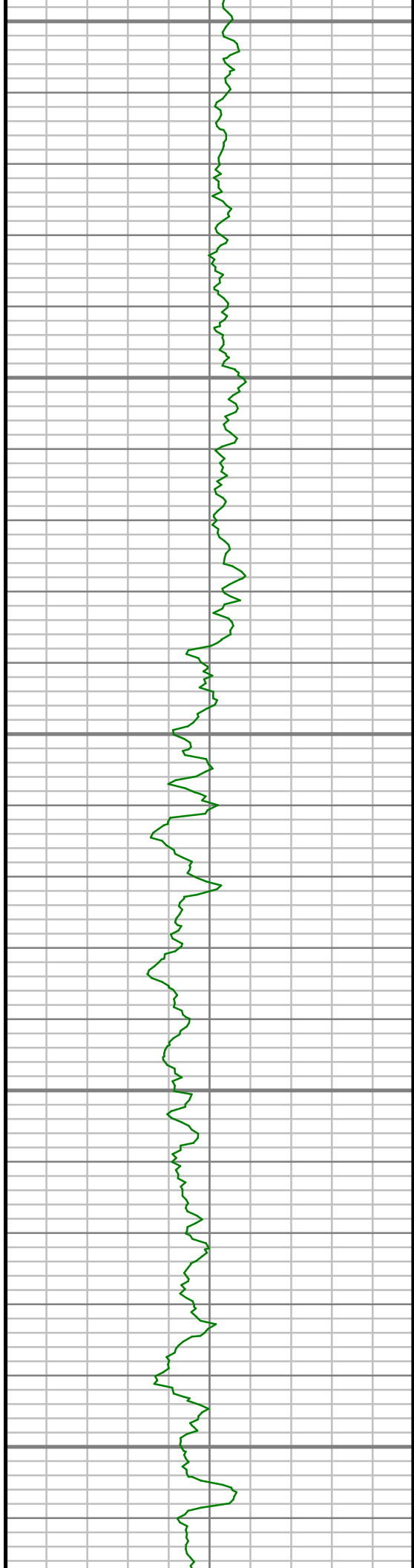
4050

4100

4150

4200





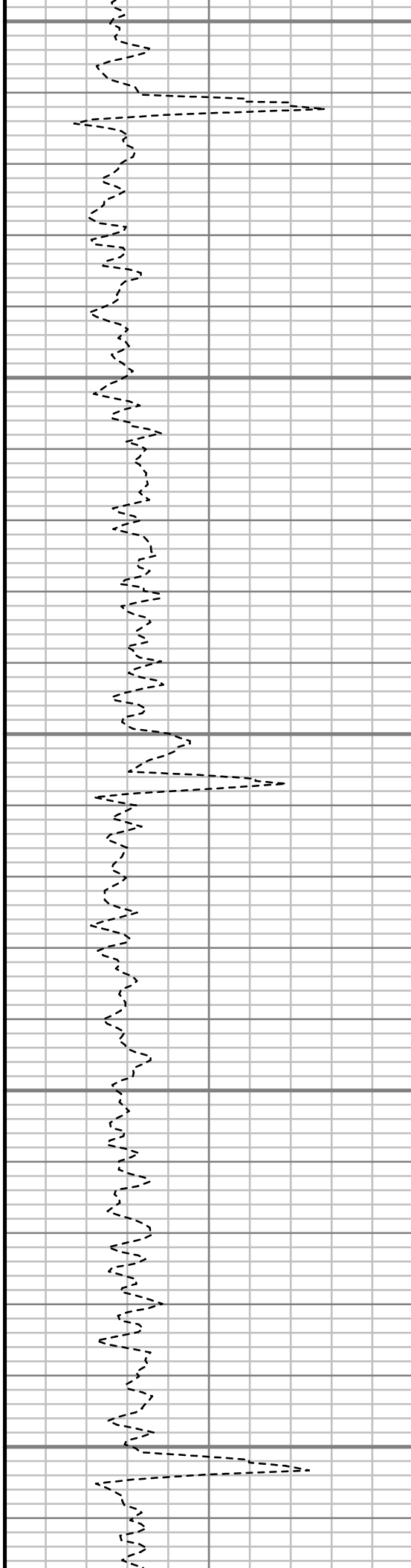
4250

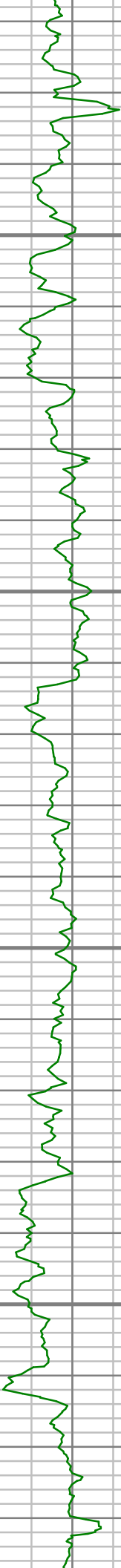
4300

4350

4400

4450





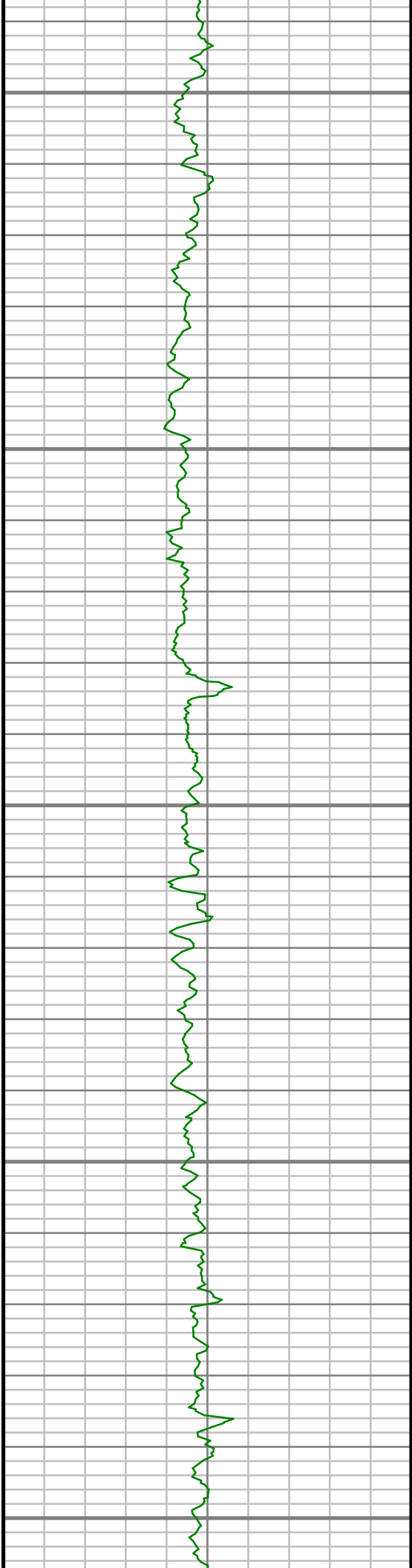
4500

4550

4600

4650





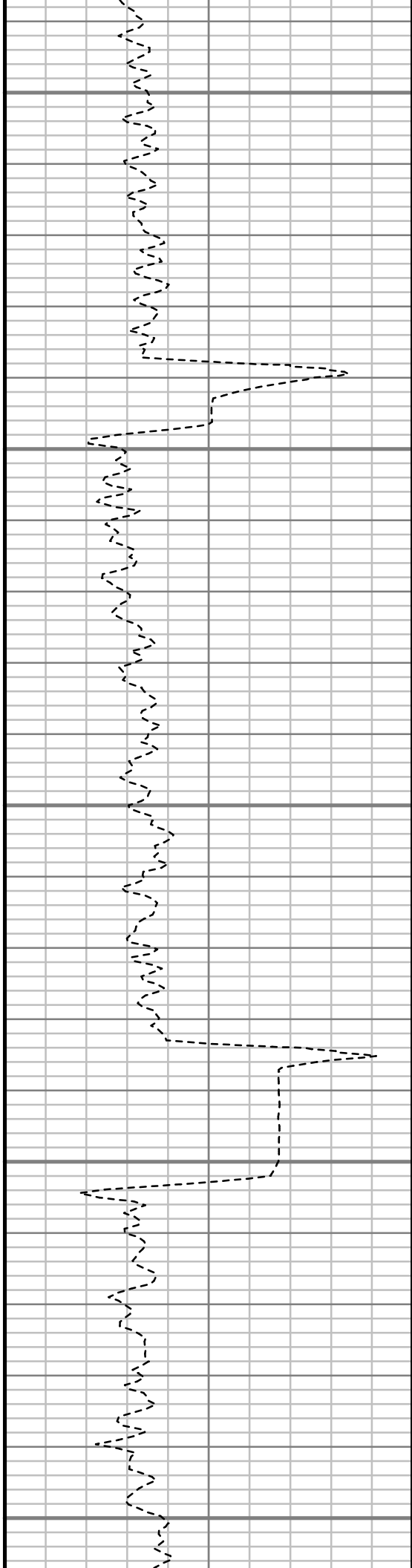
4700

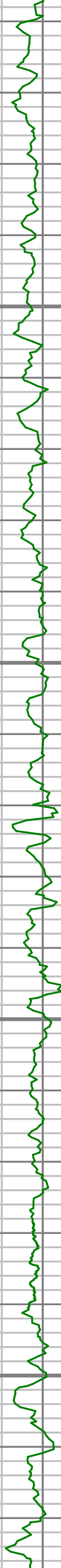
4750

4800

4850

4900





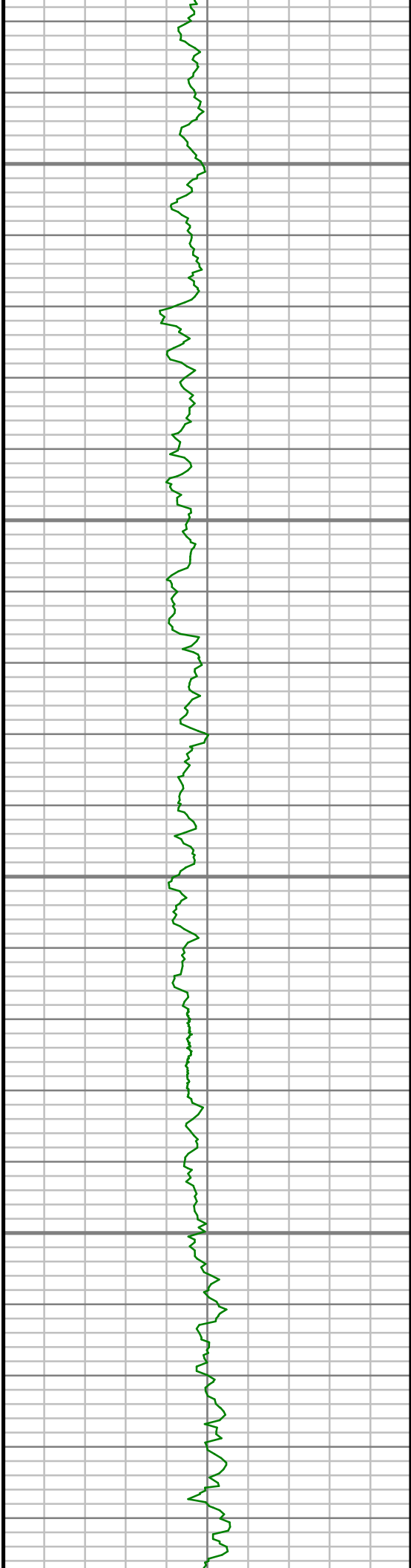
4950

5000

5050

5100



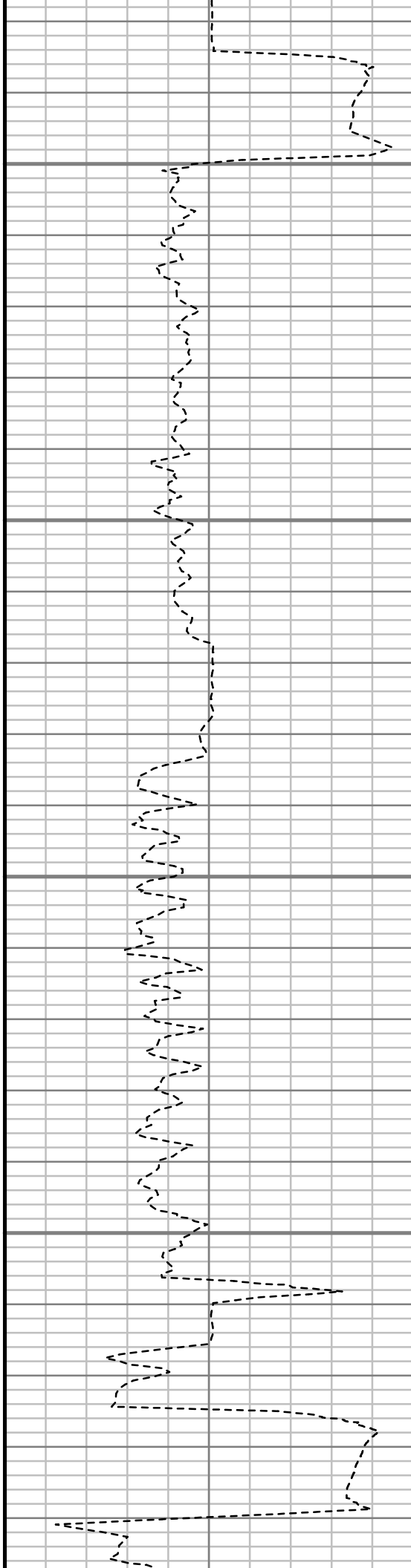


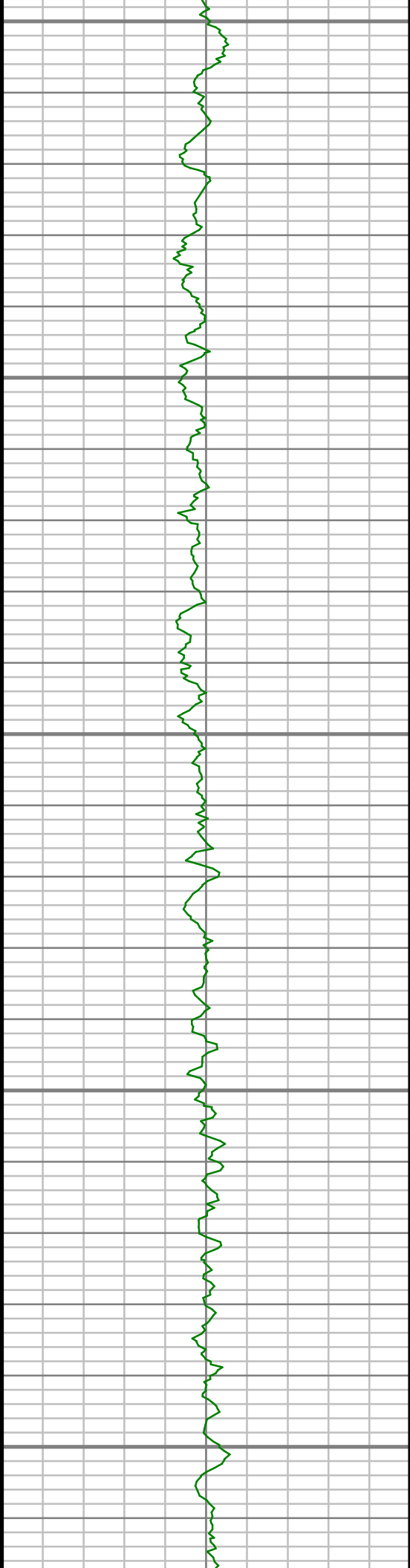
5150

5200

5250

5300





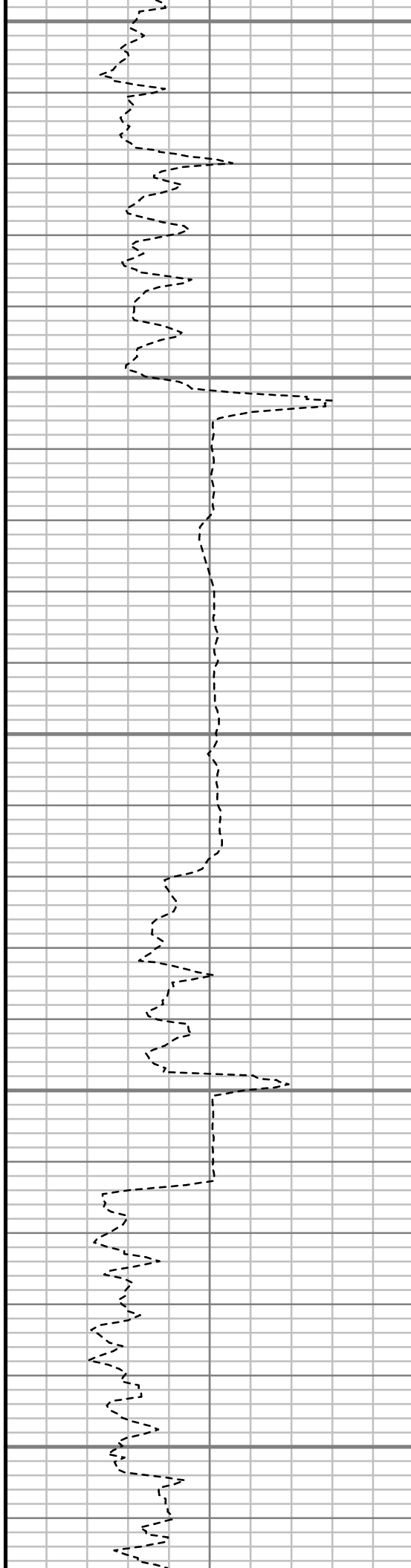
5350

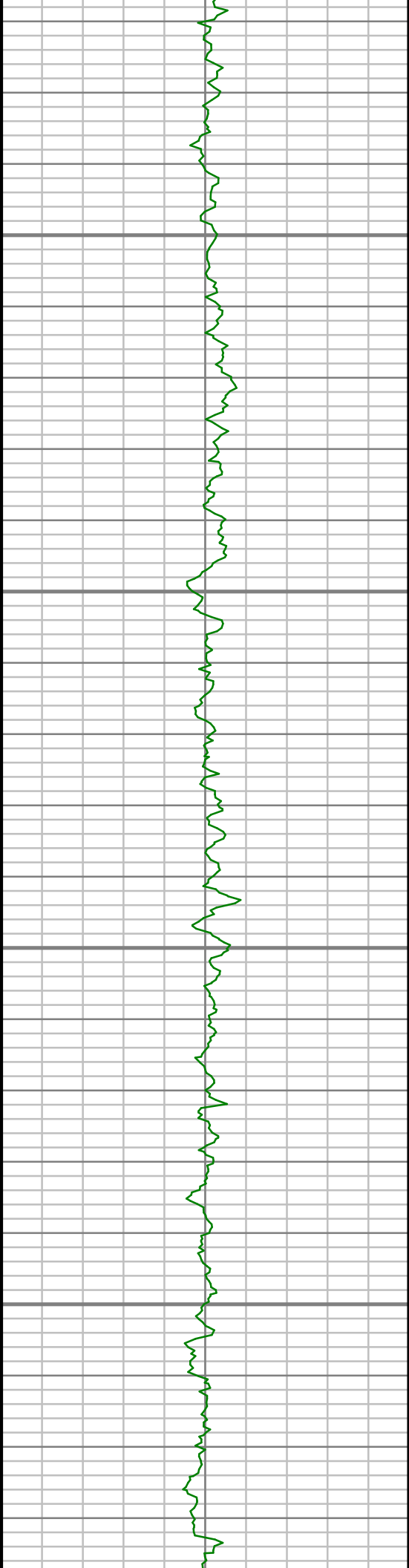
5400

5450

5500

5550



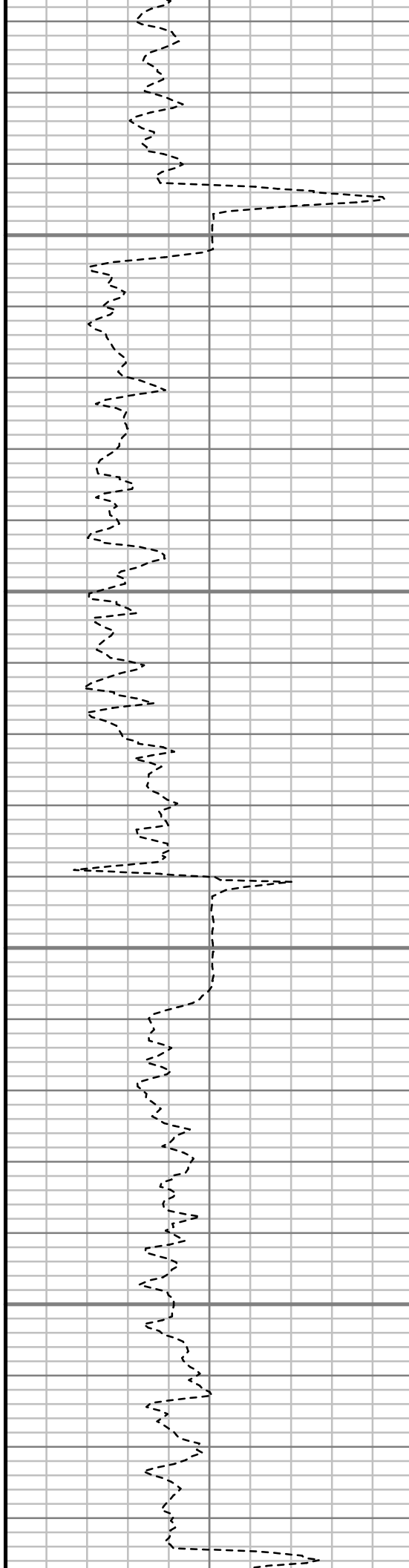


5600

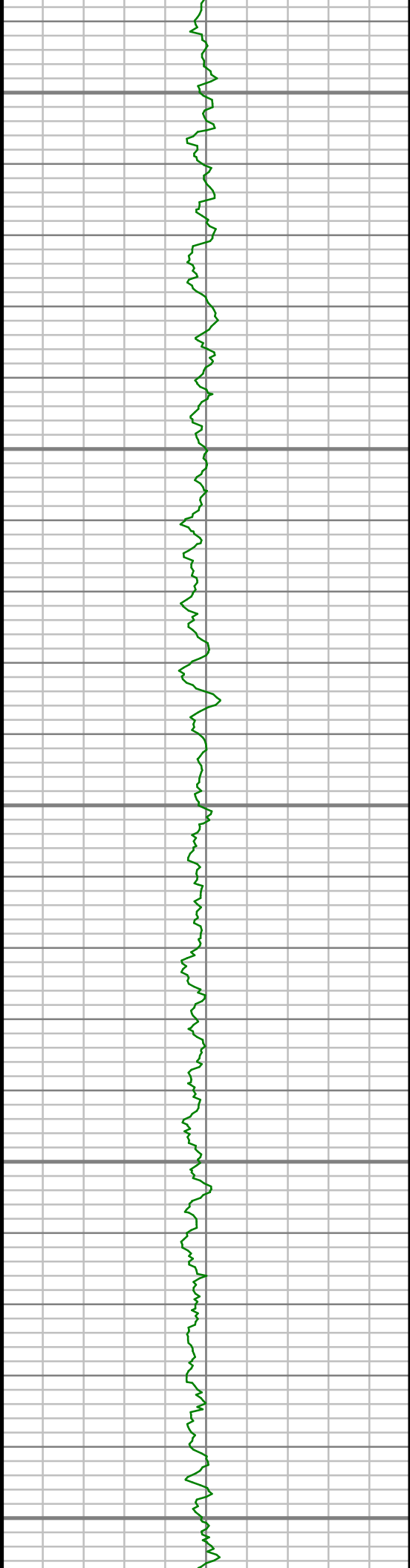
5650

5700

5750







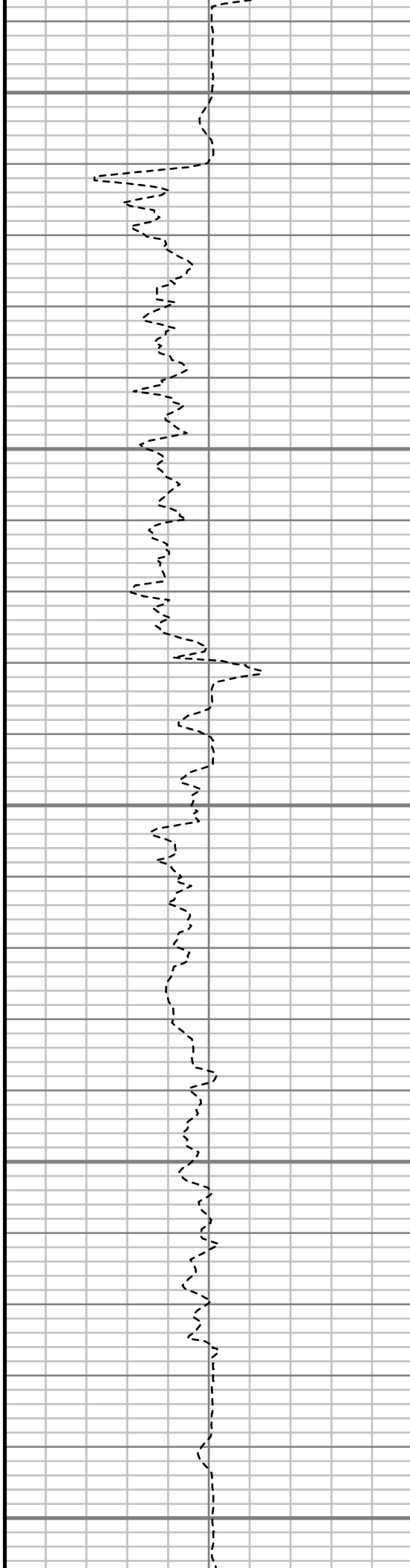
5800

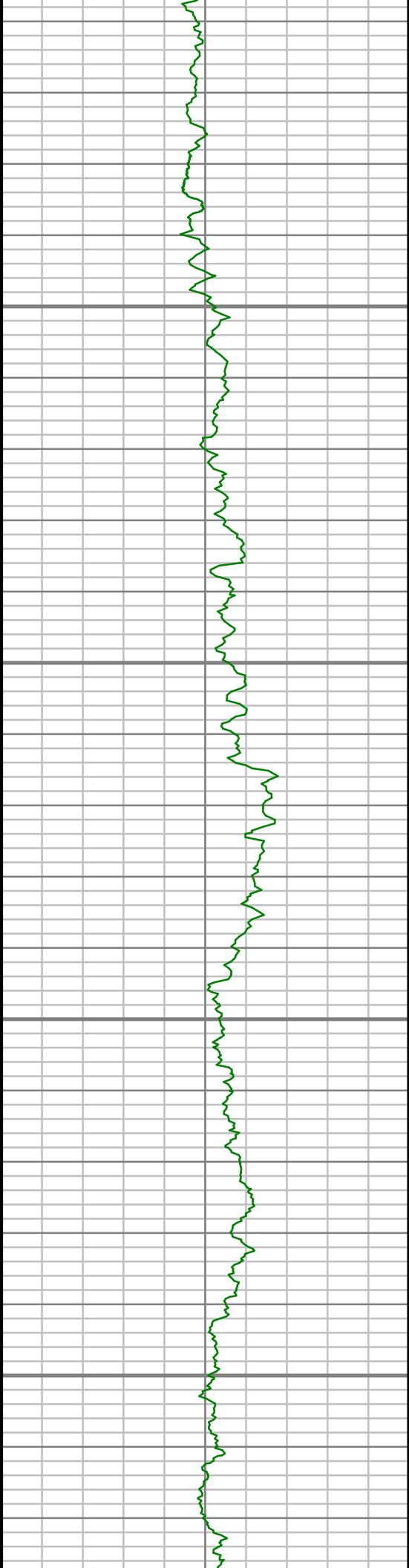
5850

5900

5950

6000



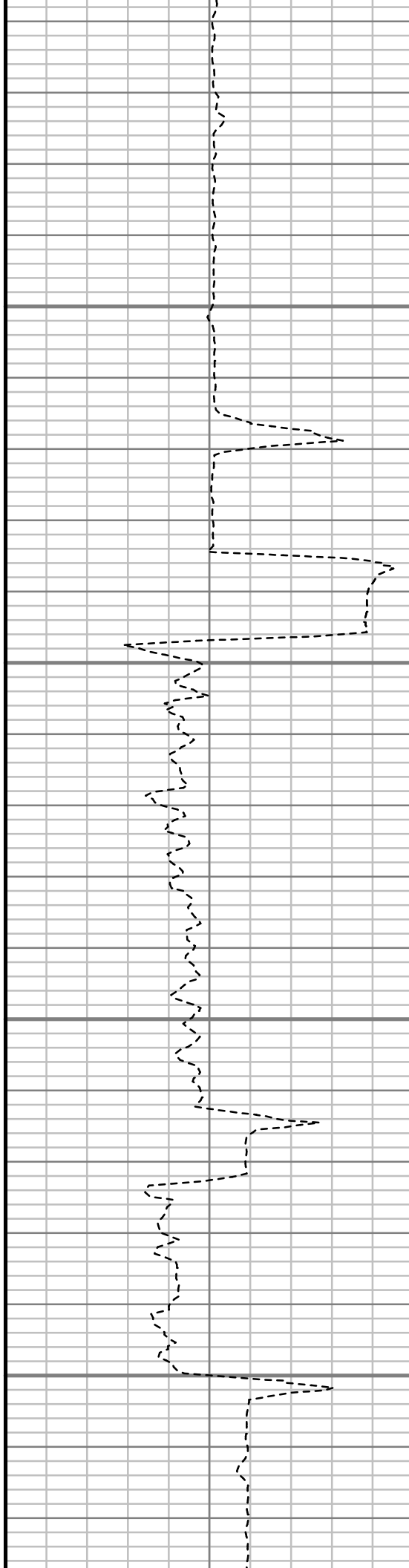


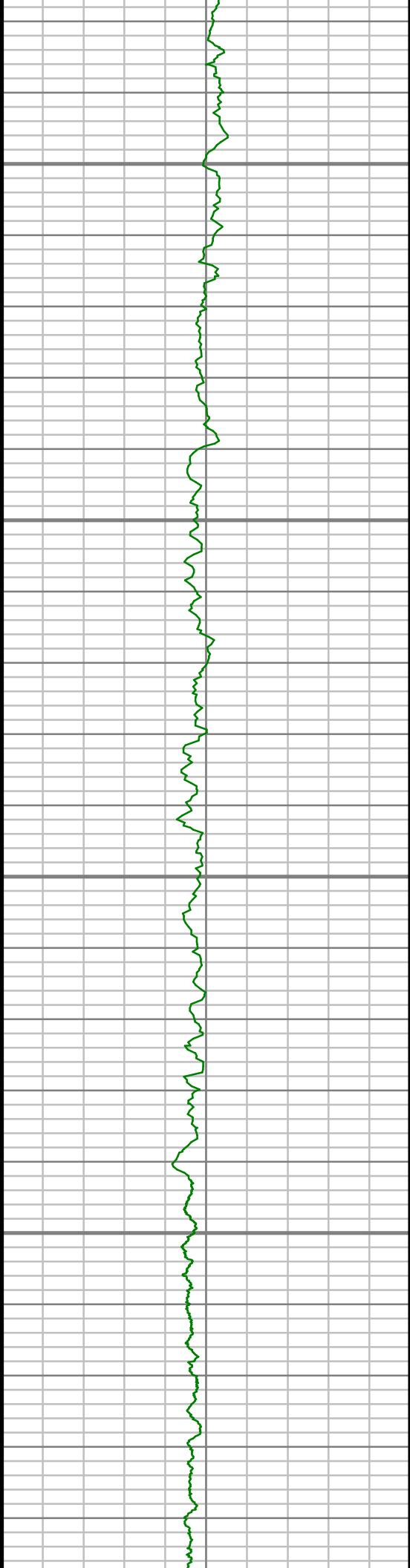
6050

6100

6150

6200



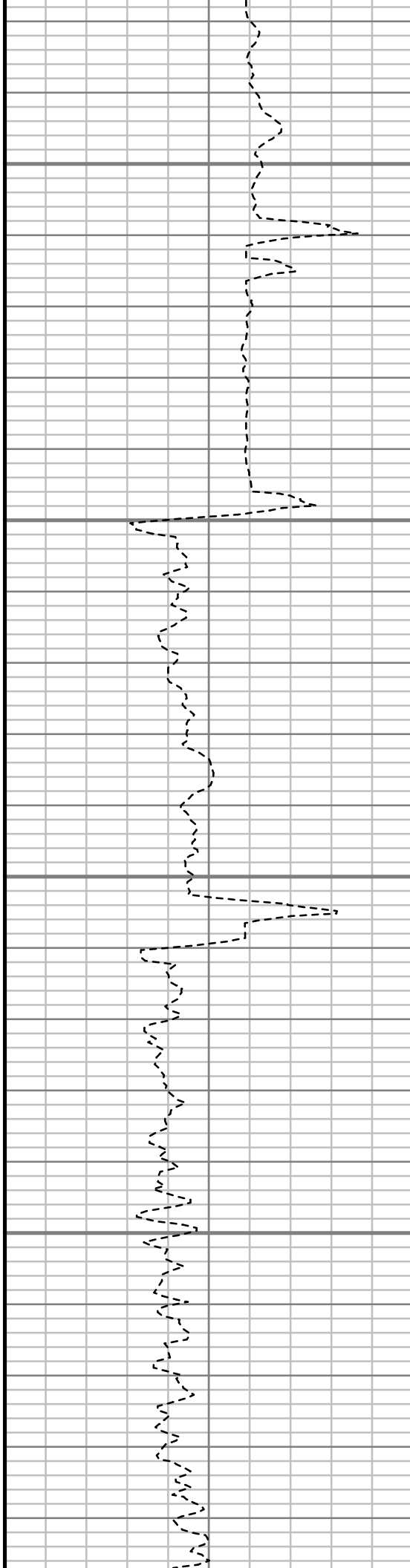


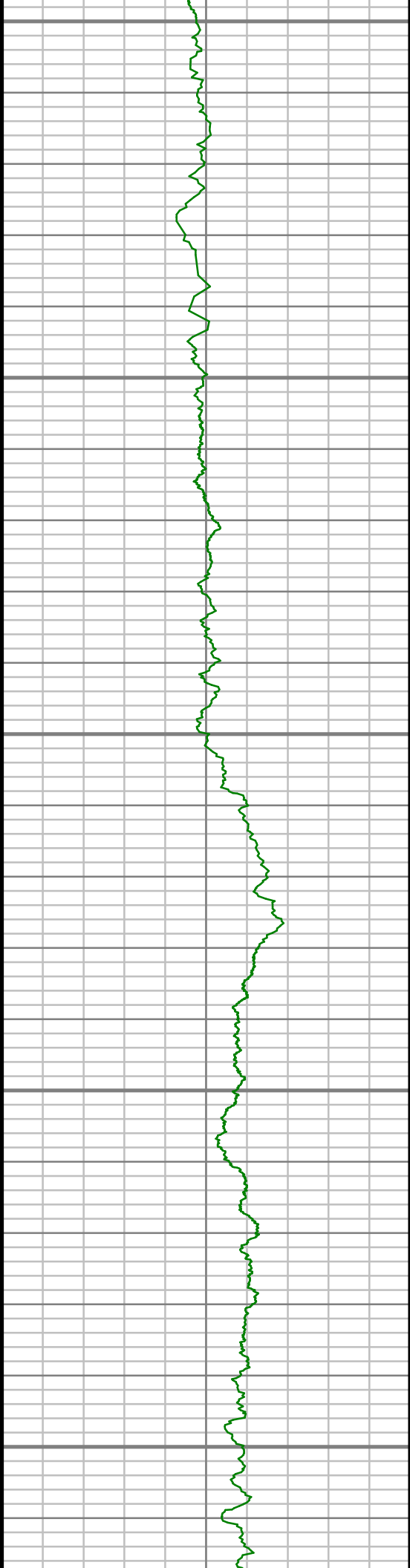
6250

6300

6350

6400





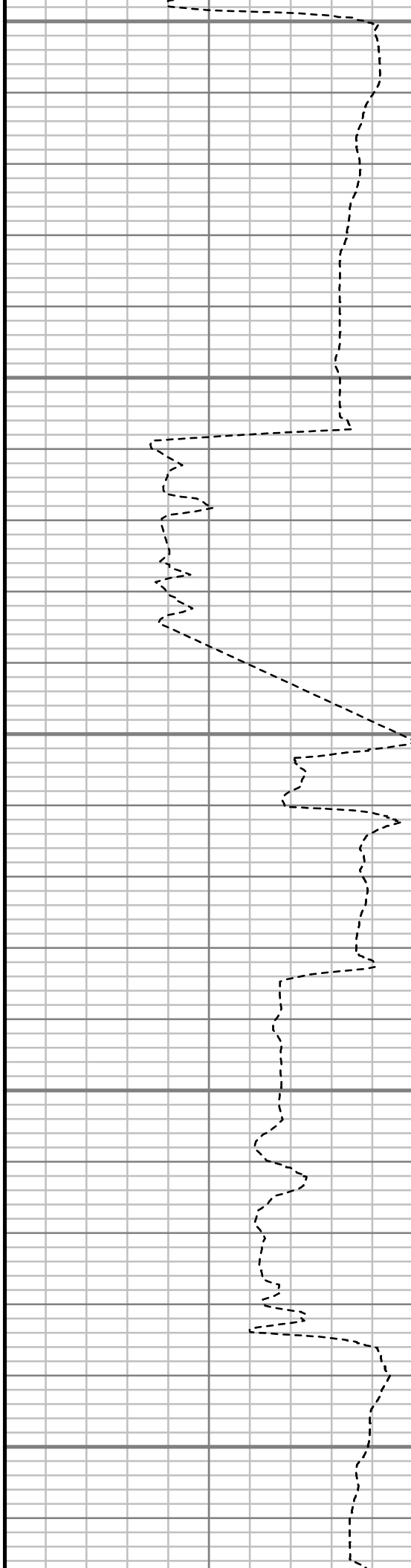
6450

6500

6550

6600

6650



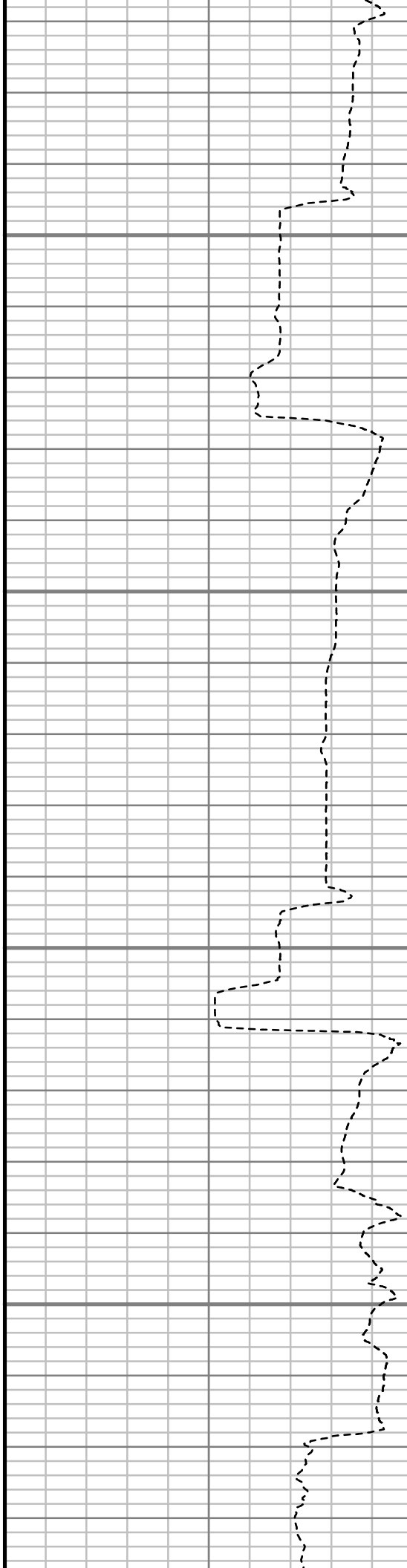


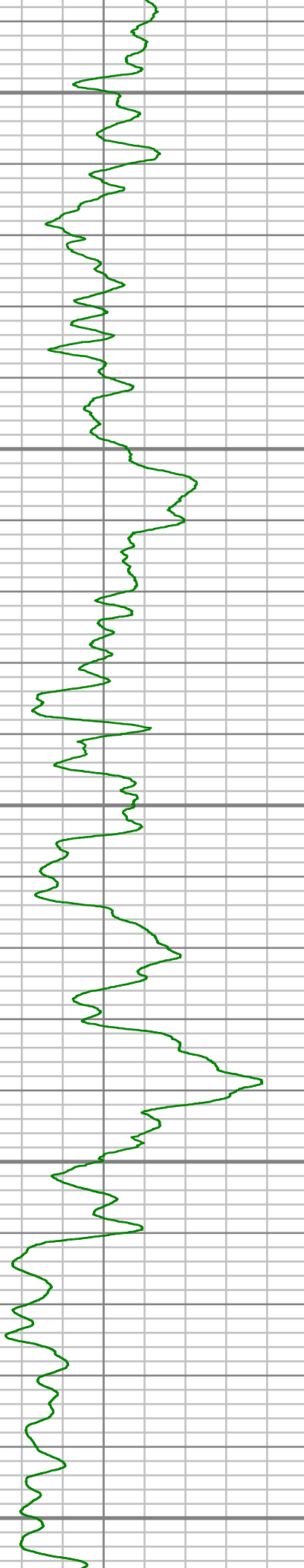
6700

6750

6800

6850





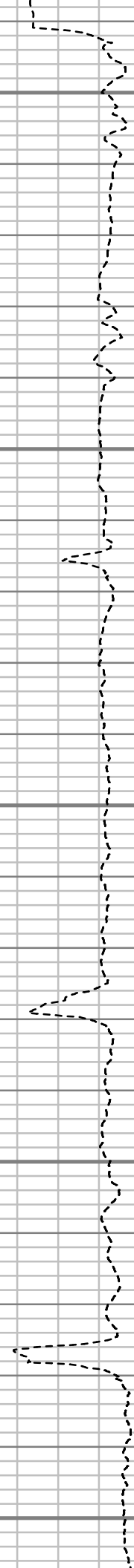
6900

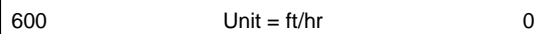
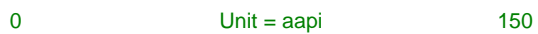
6950

7000

7050

7100





TRUE VERTICAL DEPTH  
1:240 (ft)

Comments



## MWD Survey Report

Well Location	NEWNAM
Well Name	NEWNAM 2I-32H-C264
Survey Date	1/9/2015
Latitude	40°6'5.278"N
Longitude	104°34'42.323"W
Btotal	52501 nT
Dip	66.71 deg
Magnetic Declination	8.36 deg
North Reference	True North
Grid Correction	None
Depth Reference	RKB (13.00 ft)
Calculation Method	Minimum Curvature
Section (VS) Ref	0.00N (ft), 0.00E (ft), 180.00Azim (deg)
Operator(s)	J. QUIMBY, M. SMITH, T. MORGAN

### Well Notes

MD	Inc	Azim	TVD	VS	+N/-S	+E/-W	Closure Direction	Closure Distance	DLS
ft	deg	deg	ft	ft	ft	ft	deg	ft	"/100ft
0.00	0.00	0.00	0.00	0.00	0.00	0.00	0.00	0.00	Invalid
302.00	0.41	117.42	302.00	0.50	-0.50	0.96	117.42	1.08	0.14
425.00	2.47	16.84	424.96	-1.83	1.83	2.12	49.10	2.80	2.09
518.00	3.58	5.78	517.83	-6.64	6.64	2.99	24.25	7.28	1.34
642.00	6.57	21.10	641.34	-17.10	17.10	5.93	19.13	18.10	2.63
735.00	7.99	22.93	733.58	-28.02	28.02	10.37	20.30	29.88	1.55
828.00	9.31	27.21	825.52	-40.67	40.67	16.32	21.87	43.82	1.57
920.00	9.43	27.97	916.30	-53.94	53.94	23.26	23.33	58.74	0.19
980.00	9.79	27.86	975.46	-62.79	62.79	27.95	23.99	68.73	0.61
1085.00	9.62	27.89	1078.95	-78.44	78.44	36.23	24.79	86.40	0.16
1271.00	10.46	28.55	1262.10	-107.01	107.01	51.57	25.73	118.79	0.46
1457.00	10.78	27.64	1444.91	-137.26	137.26	67.71	26.26	153.05	0.20
1647.00	10.59	25.47	1631.62	-168.77	168.77	83.46	26.31	188.28	0.23
1838.00	9.61	33.59	1819.67	-197.90	197.90	99.83	26.77	221.65	0.91
2029.00	9.50	30.79	2008.02	-224.71	224.71	116.72	27.45	253.22	0.25
2219.00	6.83	30.48	2196.07	-247.93	247.93	130.48	27.76	280.17	1.40
2410.00	3.67	30.08	2386.25	-263.01	263.01	139.31	27.91	297.63	1.66
2601.00	0.74	69.32	2577.09	-268.73	268.73	143.52	28.11	304.65	1.64
2791.00	0.63	81.10	2767.08	-269.32	269.32	145.69	28.41	306.20	0.09



MD	Inc	Azim	TVD	VS	+N/-S	+E/-W	Closure Direction	Closure Distance	DLS
ft	deg	deg	ft	ft	ft	ft	deg	ft	°/100ft
2982.00	0.32	129.06	2958.07	-269.15	269.15	147.13	28.66	306.74	0.25
3172.00	0.55	154.23	3148.07	-267.99	267.99	147.94	28.90	306.11	0.16
3363.00	0.05	163.23	3339.06	-267.09	267.09	148.36	29.05	305.53	0.27
3553.00	0.33	296.42	3529.06	-267.26	267.26	147.89	28.96	305.45	0.19
3743.00	0.24	257.05	3719.06	-267.41	267.41	147.01	28.80	305.16	0.11
3933.00	1.11	170.91	3909.05	-265.51	265.51	146.91	28.96	303.44	0.59
4124.00	1.13	175.43	4100.01	-261.81	261.81	147.35	29.37	300.43	0.05
4315.00	1.17	22.57	4291.00	-261.74	261.74	148.25	29.53	300.81	1.17
4505.00	1.48	8.08	4480.95	-265.96	265.96	149.34	29.31	305.02	0.24
4696.00	1.04	350.51	4671.90	-270.11	270.11	149.40	28.95	308.68	0.30
4886.00	1.08	347.69	4861.87	-273.57	273.57	148.73	28.53	311.38	0.03
5077.00	1.90	332.23	5052.80	-278.13	278.13	146.87	27.84	314.53	0.48
5267.00	0.84	293.38	5242.75	-281.48	281.48	144.12	27.11	316.23	0.71
5457.00	0.82	199.62	5432.74	-280.76	280.76	142.38	26.89	314.80	0.64
5647.00	1.24	202.83	5622.71	-277.58	277.58	141.12	26.95	311.40	0.23
5837.00	1.72	183.89	5812.64	-272.85	272.85	140.13	27.18	306.73	0.35
6027.00	1.43	166.91	6002.57	-267.70	267.70	140.48	27.69	302.32	0.29
6217.00	0.97	94.09	6192.54	-265.28	265.28	142.62	28.26	301.19	0.77

MD	Inc	Azim	TVD	VS	+N/-S	+E/-W	Closure Direction	Closure Distance	DLS
ft	deg	deg	ft	ft	ft	ft	deg	ft	°/100ft
6407.00	0.42	130.96	6382.53	-264.71	264.71	144.76	28.67	301.71	0.36
6502.00	6.54	179.17	6477.31	-259.07	259.07	145.10	29.25	296.94	6.60
6597.00	12.38	177.01	6570.98	-243.48	243.48	145.71	30.90	283.75	6.16
6692.00	15.99	175.94	6663.07	-220.25	220.25	147.16	33.75	264.89	3.81
6788.00	23.64	178.84	6753.32	-187.77	187.77	148.49	38.34	239.39	8.04
6883.00	32.97	177.95	6836.87	-142.79	142.79	149.81	46.37	206.96	9.82
6978.00	36.52	180.88	6914.92	-88.68	88.68	150.30	59.46	174.51	4.13
7074.00	46.21	184.10	6986.90	-25.40	25.40	147.37	80.22	149.54	10.33
7169.00	56.51	185.97	7046.14	48.40	-48.40	140.78	108.97	148.87	10.95
7264.00	65.39	184.79	7092.23	131.00	-131.00	133.04	134.56	186.71	9.41
7359.00	76.25	182.82	7123.40	220.39	-220.39	127.14	150.02	254.43	11.60
7419.00	84.85	182.89	7133.24	279.45	-279.45	124.19	156.04	305.80	14.34
7535.00	90.74	181.03	7137.71	395.24	-395.24	120.23	163.08	413.12	5.32
7628.00	90.17	179.58	7136.97	488.23	-488.23	119.74	166.22	502.70	1.67
7721.00	89.66	178.29	7137.11	581.21	-581.21	121.46	168.20	593.77	1.49
7814.00	89.77	177.79	7137.57	674.16	-674.16	124.64	169.53	685.58	0.55
7909.00	89.80	177.81	7137.93	769.09	-769.09	128.28	170.53	779.71	0.04
8004.00	89.30	177.36	7138.68	864.00	-864.00	132.29	171.29	874.07	0.72

MD	Inc	Azim	TVD	VS	+N/-S	+E/-W	Closure Direction	Closure Distance	DLS
ft	deg	deg	ft	ft	ft	ft	deg	ft	°/100ft
8099.00	91.14	177.35	7138.32	958.89	-958.89	136.68	171.89	968.58	1.94
8194.00	92.38	178.66	7135.40	1053.79	-1053.79	139.99	172.43	1063.04	1.90
8289.00	91.71	179.65	7132.00	1148.71	-1148.71	141.38	172.98	1157.38	1.26
8384.00	89.97	179.33	7130.61	1243.69	-1243.69	142.23	173.48	1251.80	1.87
8479.00	91.58	181.41	7129.33	1338.68	-1338.68	141.63	173.96	1346.15	2.77
8574.00	90.84	180.92	7127.33	1433.63	-1433.63	139.70	174.43	1440.42	0.93
8670.00	89.20	180.45	7127.30	1529.62	-1529.62	138.55	174.82	1535.89	1.78
8765.00	88.42	179.90	7129.27	1624.60	-1624.60	138.27	175.14	1630.47	1.00
8860.00	87.72	180.07	7132.48	1719.55	-1719.55	138.30	175.40	1725.10	0.77
8955.00	89.13	179.64	7135.09	1814.51	-1814.51	138.54	175.63	1819.79	1.55
9051.00	89.73	180.28	7136.05	1910.50	-1910.50	138.61	175.85	1915.52	0.92
9146.00	90.20	179.56	7136.10	2005.50	-2005.50	138.75	176.04	2010.30	0.91
9241.00	90.50	177.58	7135.52	2100.46	-2100.46	141.13	176.16	2105.20	2.11
9337.00	89.53	178.23	7135.49	2196.40	-2196.40	144.64	176.23	2201.16	1.22
9432.00	89.63	178.05	7136.19	2291.35	-2291.35	147.73	176.31	2296.10	0.22
9527.00	89.77	178.35	7136.69	2386.30	-2386.30	150.71	176.39	2391.05	0.35
9622.00	92.38	180.17	7134.91	2481.26	-2481.26	151.94	176.50	2485.91	3.35
9718.00	92.38	179.63	7130.92	2577.18	-2577.18	152.12	176.62	2581.66	0.56

MD	Inc	Azim	TVD	VS	+N/-S	+E/-W	Closure Direction	Closure Distance	DLS
ft	deg	deg	ft	ft	ft	ft	deg	ft	°/100ft
9813.00	91.61	181.21	7127.61	2672.11	-2672.11	151.42	176.76	2676.40	1.86
9908.00	90.24	181.37	7126.08	2767.07	-2767.07	149.28	176.91	2771.10	1.46
10003.00	90.34	181.81	7125.60	2862.04	-2862.04	146.65	177.07	2865.79	0.48
10098.00	88.96	182.46	7126.19	2956.97	-2956.97	143.10	177.23	2960.43	1.60
10194.00	88.12	182.95	7128.63	3052.83	-3052.83	138.57	177.40	3055.97	1.01
10289.00	89.56	181.44	7130.55	3147.73	-3147.73	134.93	177.55	3150.62	2.20
10384.00	88.32	179.42	7132.30	3242.71	-3242.71	134.21	177.63	3245.48	2.49
10479.00	89.66	180.51	7133.97	3337.69	-3337.69	134.27	177.70	3340.39	1.81
10575.00	90.91	180.51	7133.49	3433.68	-3433.68	133.42	177.77	3436.27	1.29
10670.00	89.66	180.21	7133.02	3528.68	-3528.68	132.83	177.84	3531.18	1.34
10765.00	90.60	179.81	7132.80	3623.68	-3623.68	132.81	177.90	3626.11	1.07
10860.00	89.43	178.31	7132.77	3718.66	-3718.66	134.37	177.93	3721.08	2.00
10956.00	88.49	178.10	7134.51	3814.59	-3814.59	137.37	177.94	3817.07	1.00
11051.00	88.93	178.04	7136.65	3909.52	-3909.52	140.58	177.94	3912.04	0.46
11146.00	90.00	177.20	7137.54	4004.43	-4004.43	144.53	177.93	4007.03	1.44
11242.00	90.13	177.61	7137.43	4100.33	-4100.33	148.88	177.92	4103.03	0.46
11337.00	88.06	174.08	7138.93	4195.05	-4195.05	155.76	177.87	4197.94	4.31
11432.00	88.62	170.99	7141.68	4289.19	-4289.19	168.09	177.76	4292.48	3.31

MD	Inc	Azim	TVD	VS	+N/-S	+E/-W	Closure Direction	Closure Distance	DLS
ft	deg	deg	ft	ft	ft	ft	deg	ft	°/100ft
11527.00	91.31	171.48	7141.74	4383.07	-4383.07	182.57	177.61	4386.87	2.87
11562.00	90.87	170.86	7141.07	4417.65	-4417.65	187.95	177.56	4421.65	2.16

MD	Inc	Azim	TVD	VS	+N/-S	+E/-W	Closure Direction	Closure Distance	DLS
ft	deg	deg	ft	ft	ft	ft	deg	ft	°/100ft

5" = 100' FEET TVD