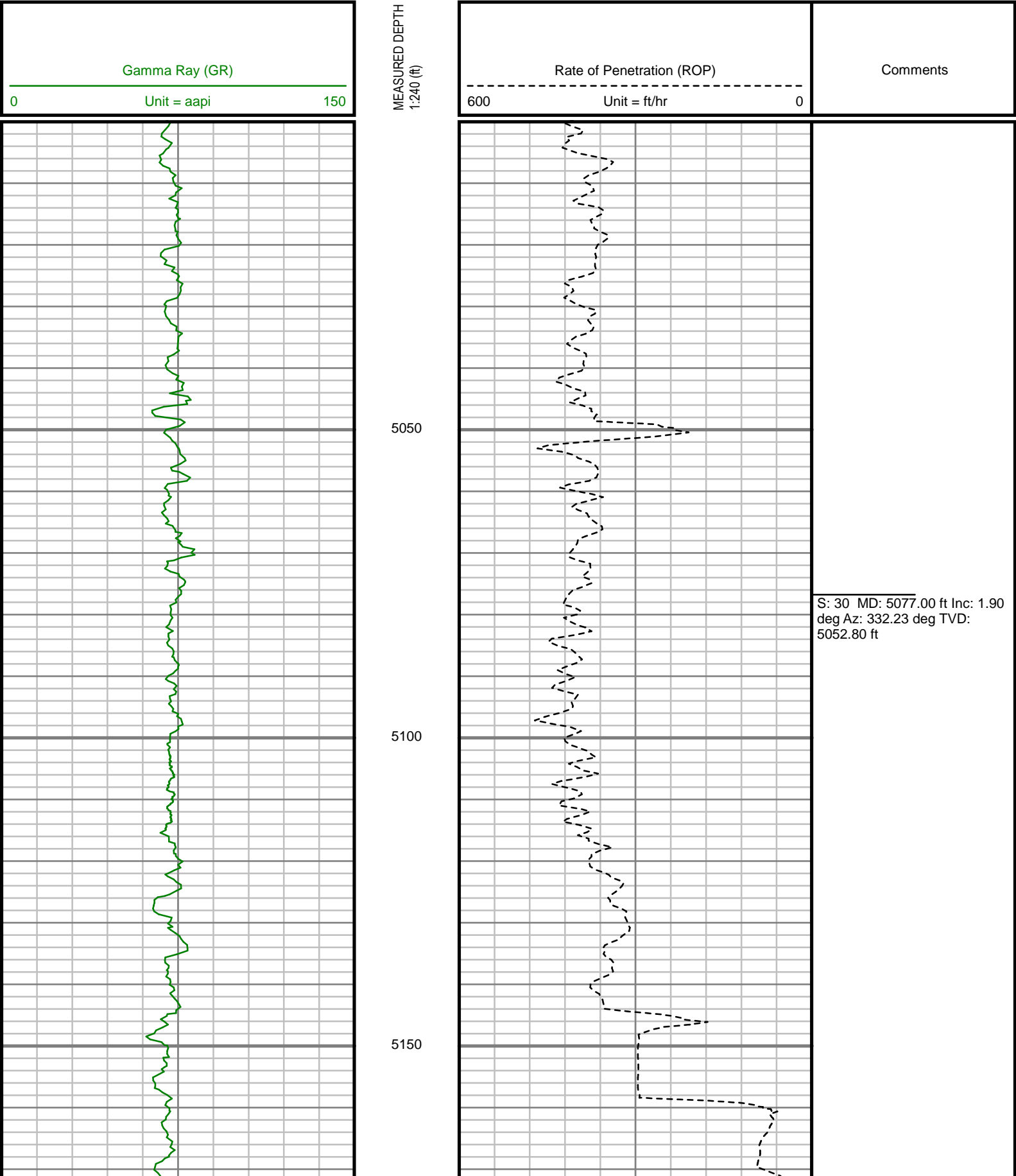


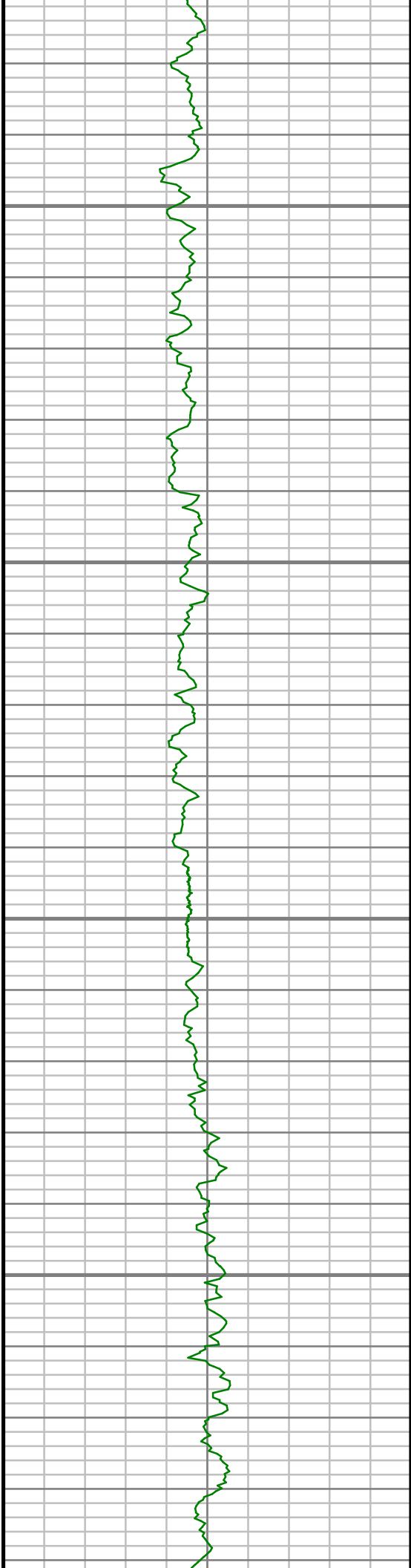
5" = 100' FEET MD

COMPANY : ENCANA OIL & GAS (USA) INC WELL : NEWNAM 2I-32H-C264 FIELD : WATTENBURG COUNTY : WELD STATE : COLORADO COUNTRY : U.S.A. UWI : 05-123-39780										COMPANY : ENCANA OIL & GAS (USA) INC WELL : NEWNAM 2I-32H-C264 FIELD : WATTENBURG COUNTY : WELD STATE : COLORADO COUNTRY : U.S.A. UWI : 05-123-39780									
DEPTH REF. : RKB REF. HEIGHT : 13.000 ft GROUND LEVEL : 4955.000 ft										RKB to Ground Level G.I. to MEAN SEA LEVEL									
BOREHOLE RECORD										DEVIATION RECORD									
HOLE SIZE in	FROM ft	TO ft	INCLINATION deg		FROM ft	TO ft													
12.25	0	1044	0 - 9		0	1044													
8.75	1044	7483	9 - 84		1044	7483													
6.125	7483	11625	84 - 92		7483	11625													
CASING RECORD																			
CASING SIZE in	FROM ft	TO ft																	
9.625	0	1030																	
7	0	7465																	
DRILLING CO. : ENSIGN RLG:124										LMD UNIT NO. : C70-EM4#83DISTRICT : CASPER SPUD DATE : 01/09/2015 LMD START DATE : 01/11/2015 LMD END DATE : 01/18/2015 TOTAL DEPTH : 11625 ft									
										DEPTH : 5000 ft DEPTH : 11625 ft									

All interpretations are opinions based on inferences from electrical or other measurements and we cannot, and do not guarantee the accuracy or correctness of any interpretations, and we shall not, except in the case of gross or willful negligence on our part, be liable or responsible for any loss, costs, damages or expenses incurred or sustained by anyone resulting from any interpretation made by any of our officers, agents or employees. These interpretations are also subject to our general terms and conditions as set out in our current price schedule.

ENCAN OIL AND GAS (U.S.A.) INC
NEWNAM 2I-32H-C246
WATTENBERG FIELD
WELD COUNTY, COLORADO
05-123-39780



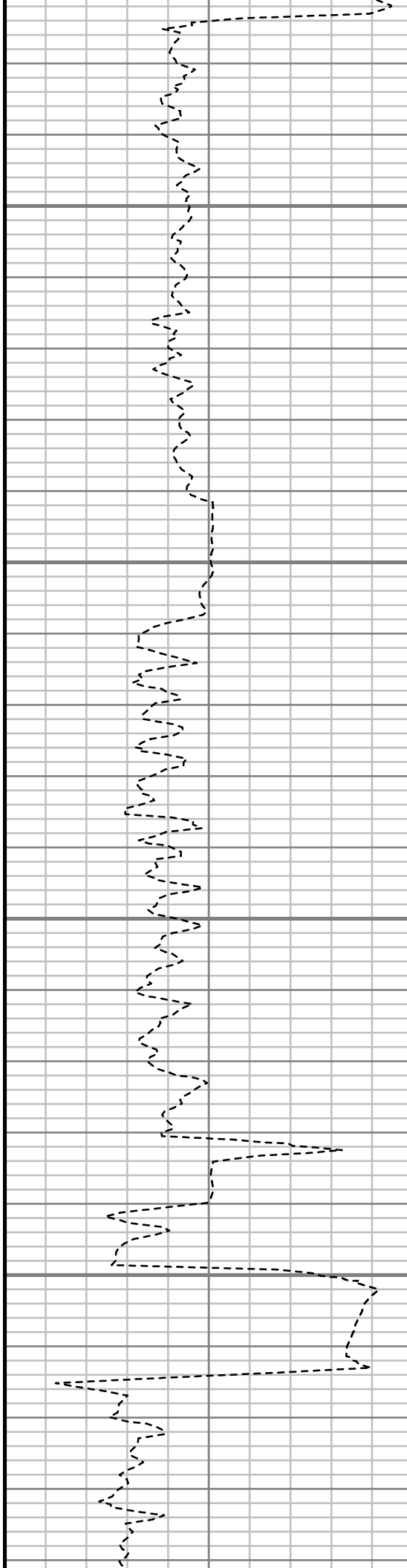


5200

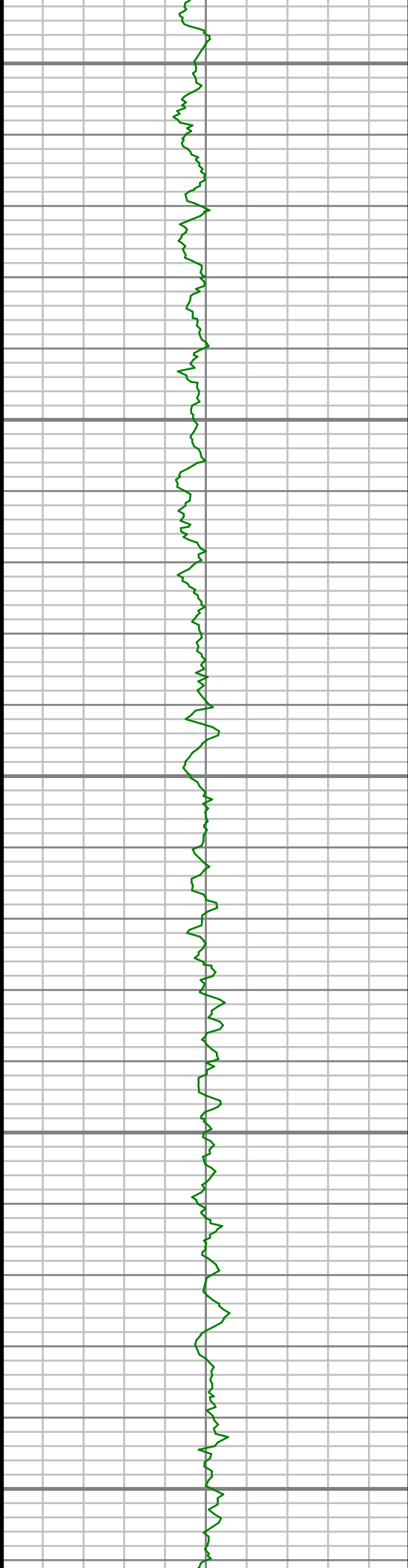
5250

5300

5350



S: 31 MD: 5267.00 ft Inc: 0.84
deg Az: 293.38 deg TVD:
5242.75 ft



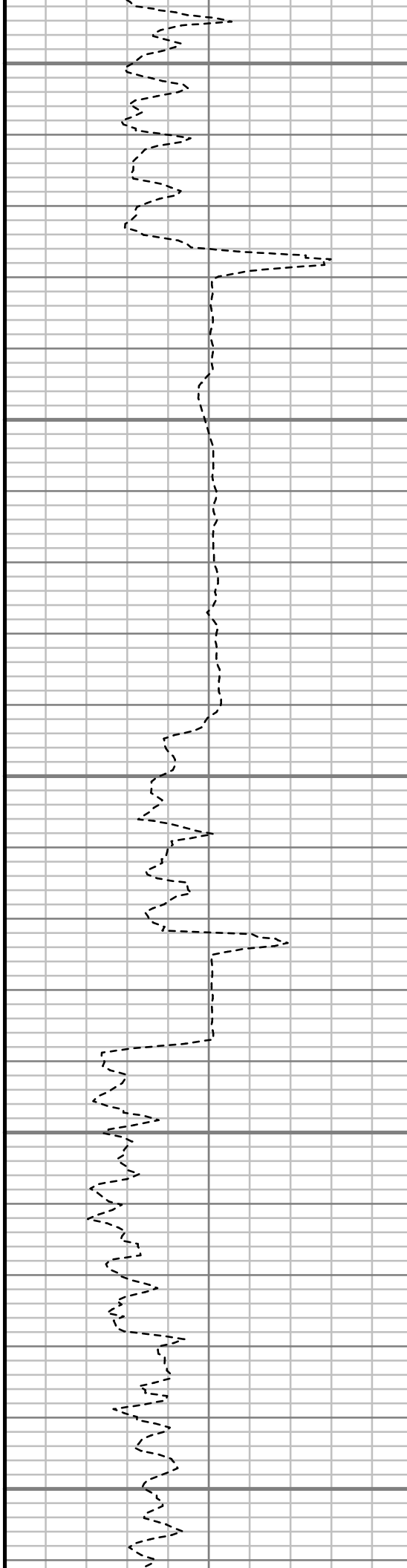
5400

5450

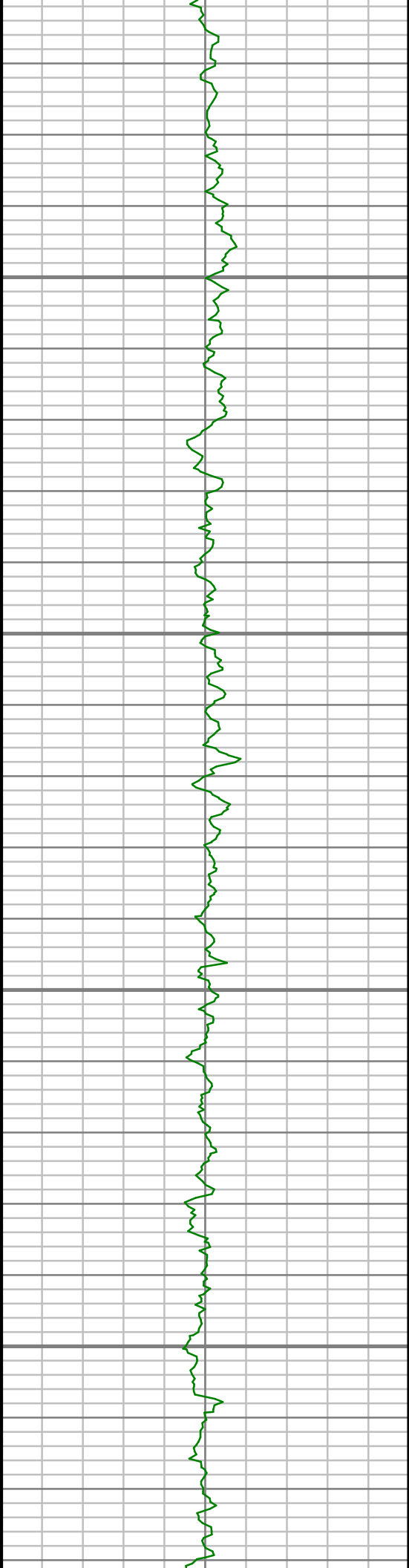
5500

5550

5600



S: 32 MD: 5457.00 ft Inc: 0.82
deg Az: 199.62 deg TVD:
5432.74 ft

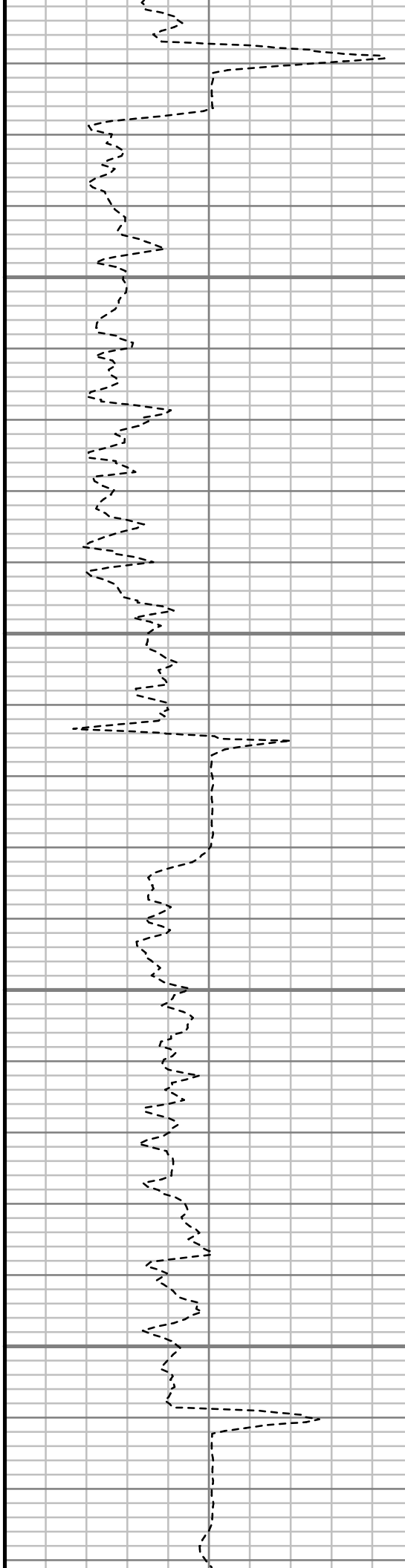


5650

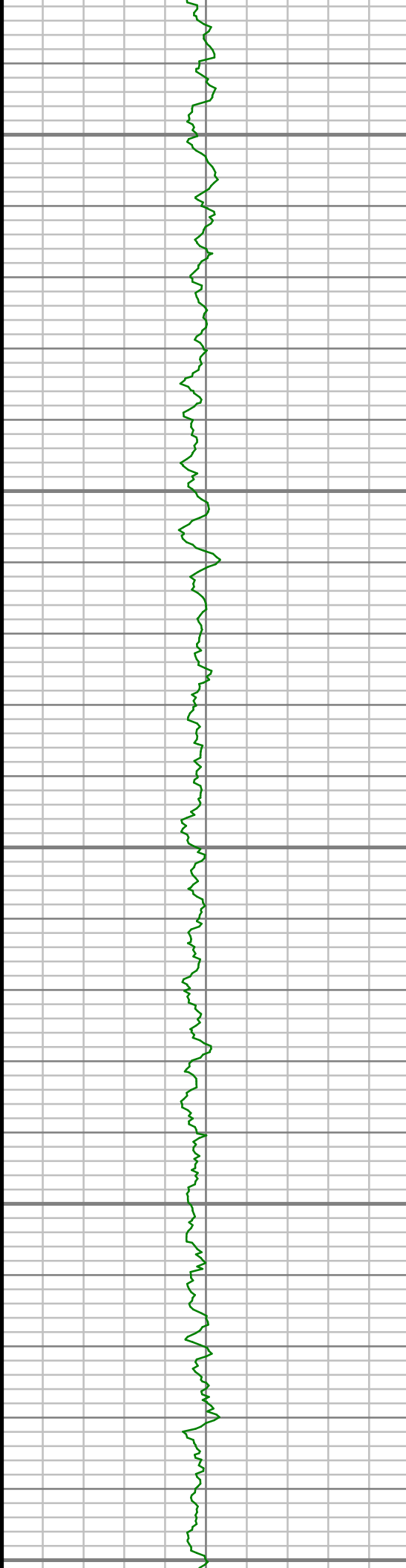
5700

5750

5800



S: 33 MD: 5647.00 ft Inc: 1.24
deg Az: 202.83 deg TVD:
5622.71 ft



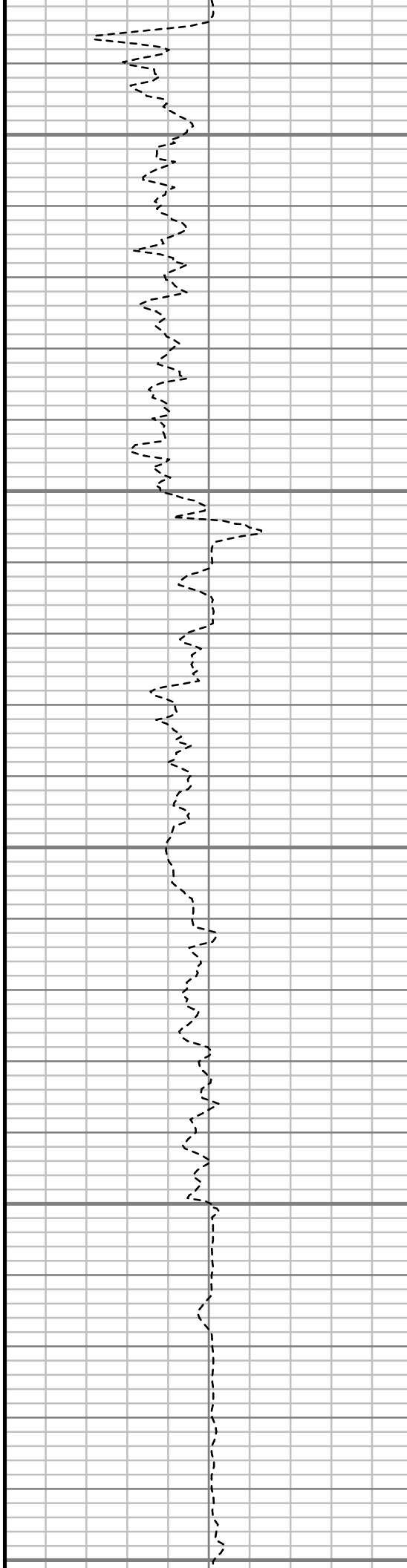
5850

5900

5950

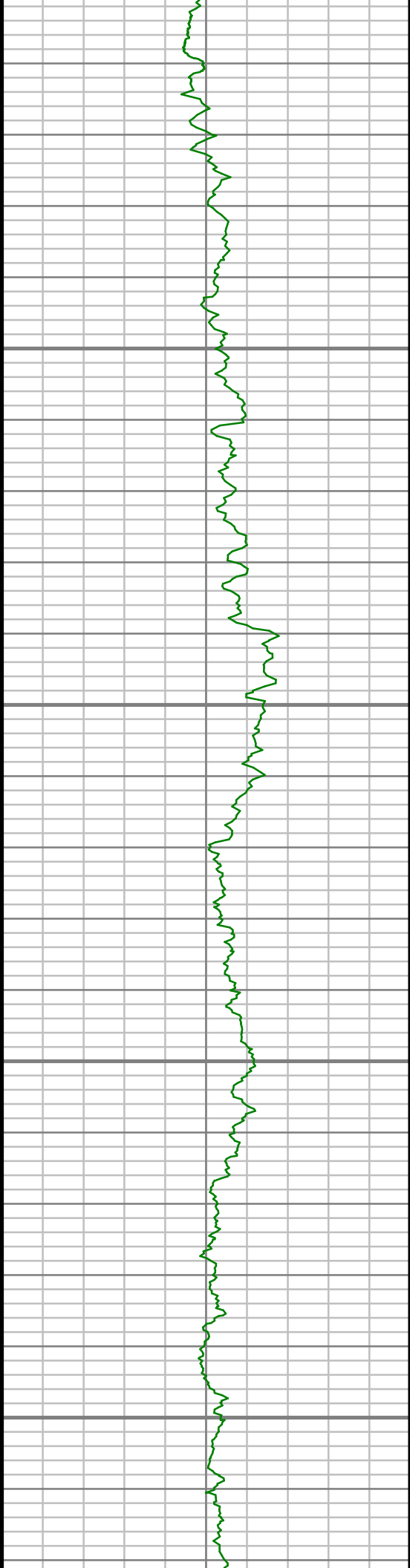
6000

6050



S: 34 MD: 5837.00 ft Inc: 1.72
deg Az: 183.89 deg TVD:
5812.64 ft

S: 35 MD: 6027.00 ft Inc: 1.43
deg Az: 166.91 deg TVD:
6002.57 ft

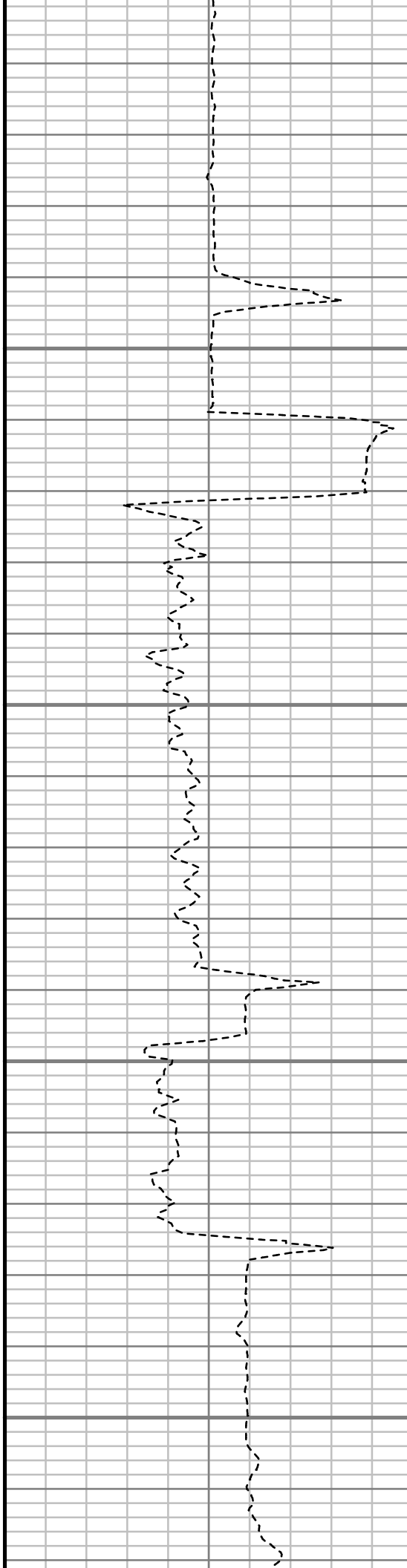


6100

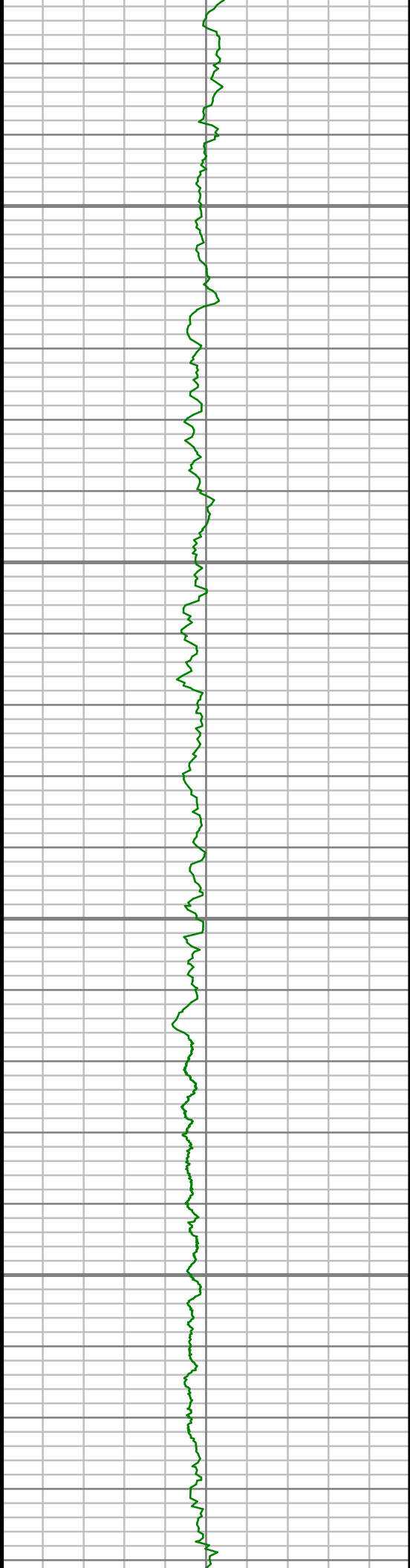
6150

6200

6250



S: 36 MD: 6217.00 ft Inc: 0.97
deg Az: 94.09 deg TVD:
6192.54 ft

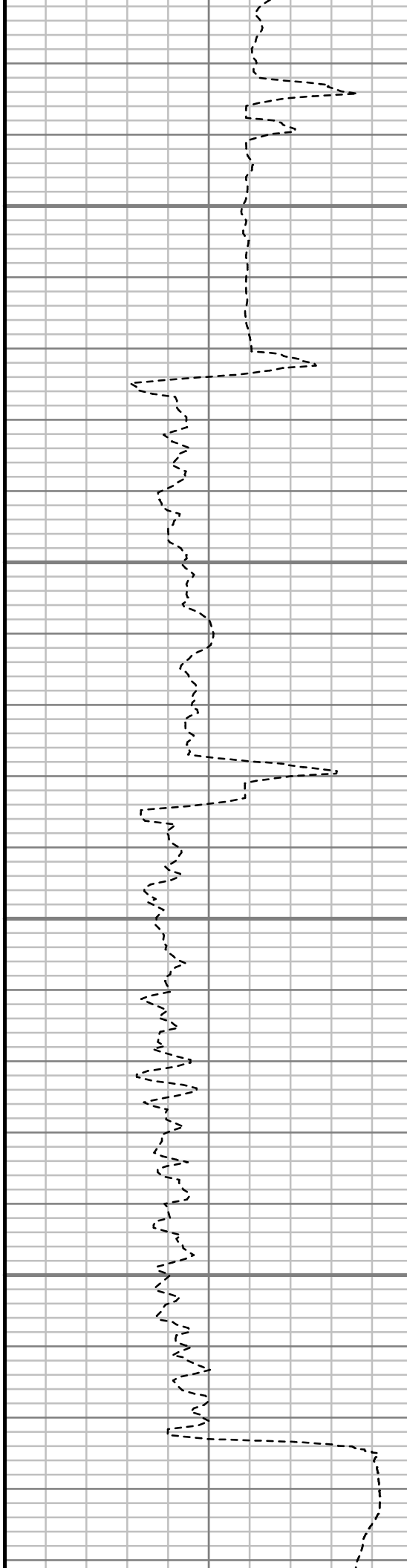


6300

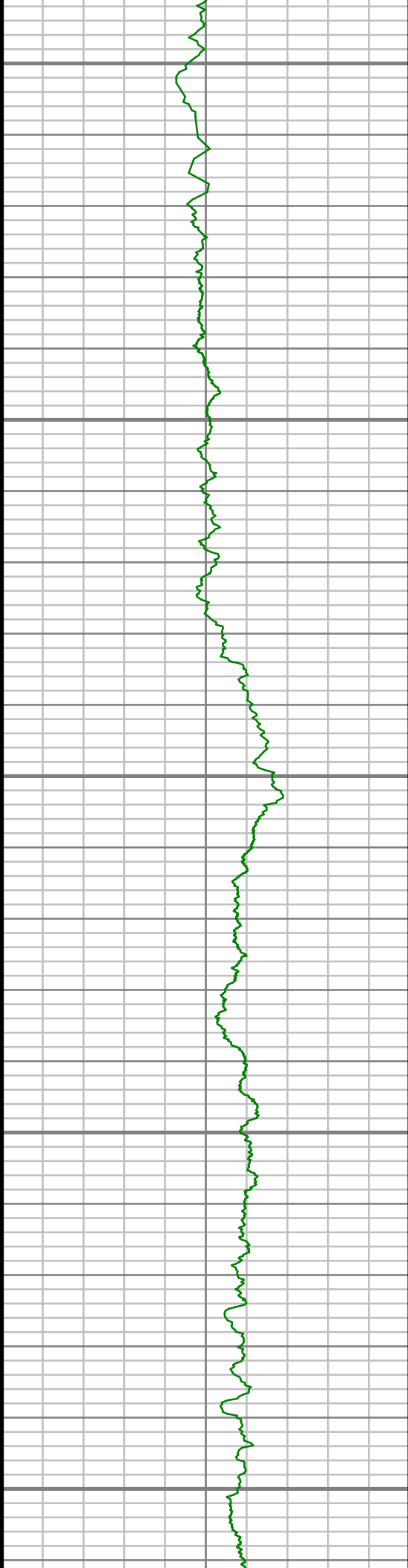
6350

6400

6450



S: 37 MD: 6407.00 ft Inc: 0.42
deg Az: 130.96 deg TVD:
6382.53 ft



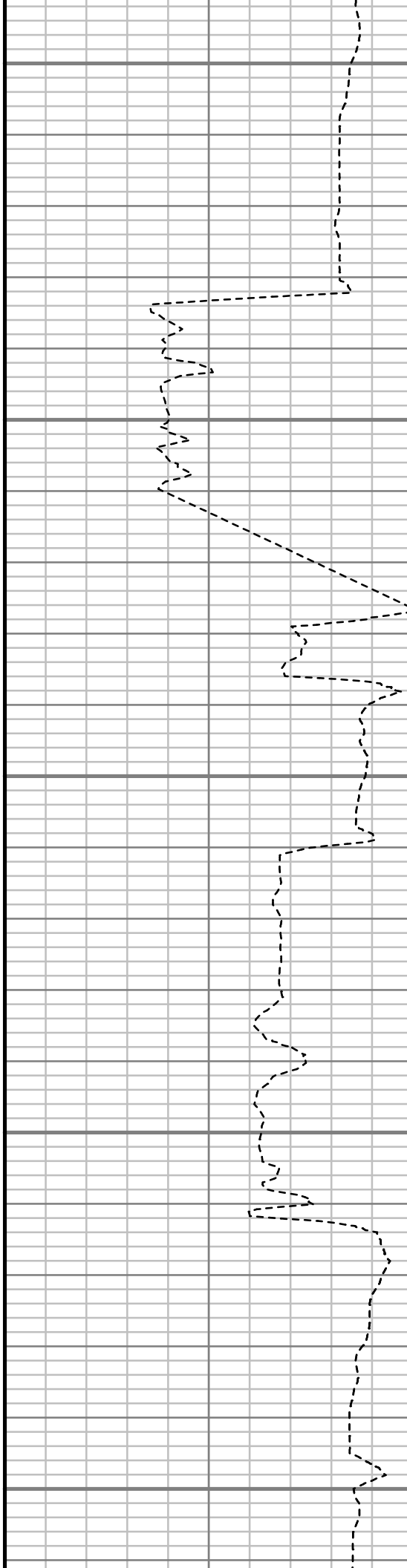
6500

6550

6600

6650

6700



S: 38 MD: 6502.00 ft Inc: 6.54
deg Az: 179.17 deg TVD:
6477.31 ft

S: 39 MD: 6597.00 ft Inc: 12.38
deg Az: 177.01 deg TVD:
6570.98 ft

S: 40 MD: 6692.00 ft Inc: 15.99
deg Az: 175.94 deg TVD:
6663.07 ft

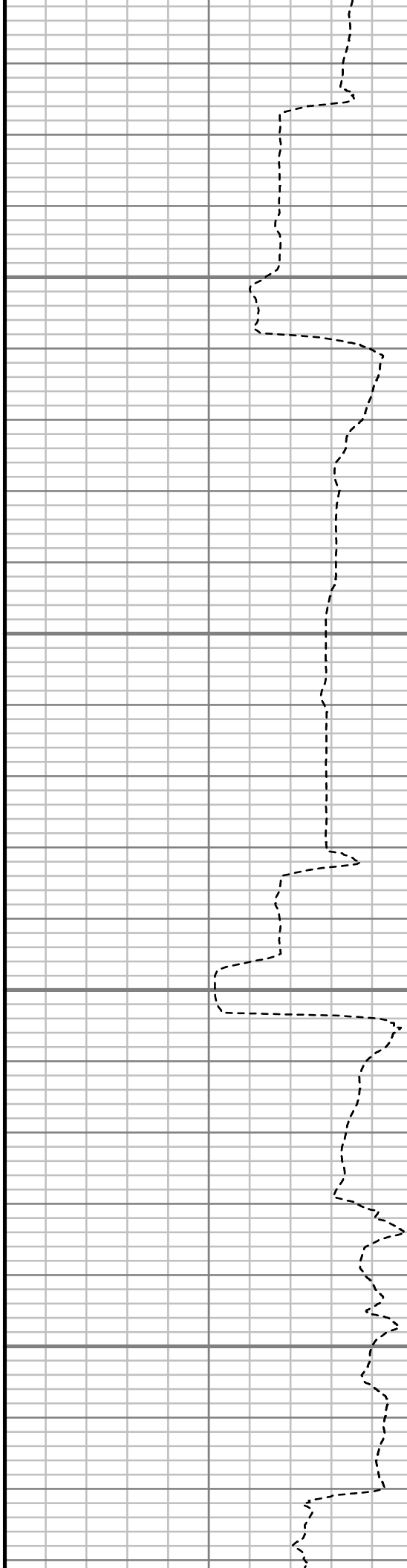


6750

6800

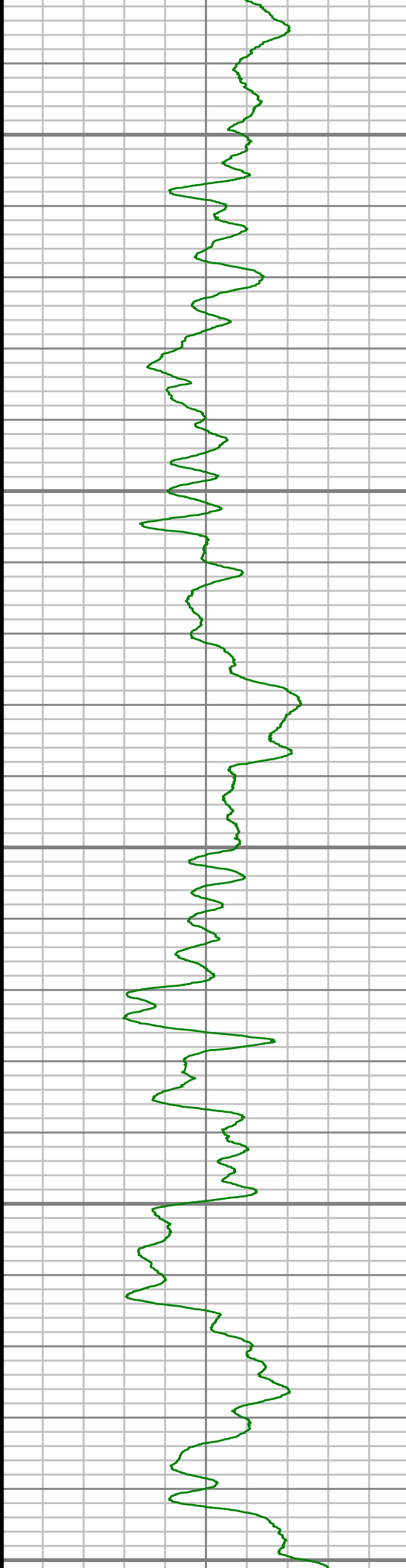
6850

6900



S: 41 MD: 6788.00 ft Inc: 23.64
deg Az: 178.84 deg TVD:
6753.32 ft

S: 42 MD: 6883.00 ft Inc: 32.97
deg Az: 177.95 deg TVD:
6836.87 ft



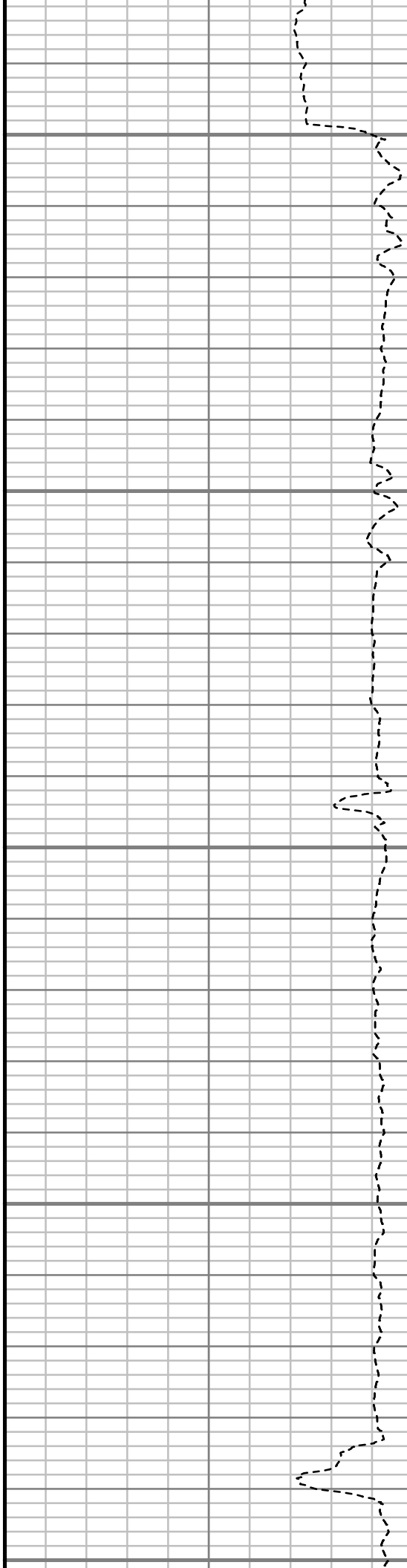
6950

7000

7050

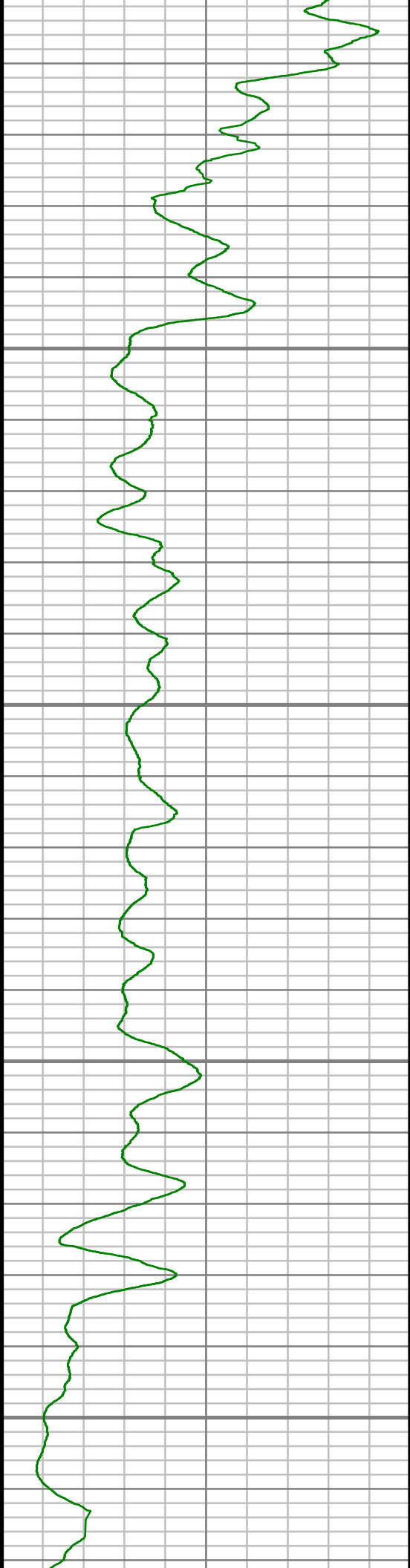
7100

7150



S: 43 MD: 6978.00 ft Inc: 36.52
deg Az: 180.88 deg TVD:
6914.92 ft

S: 44 MD: 7074.00 ft Inc: 46.21
deg Az: 184.10 deg TVD:
6986.90 ft

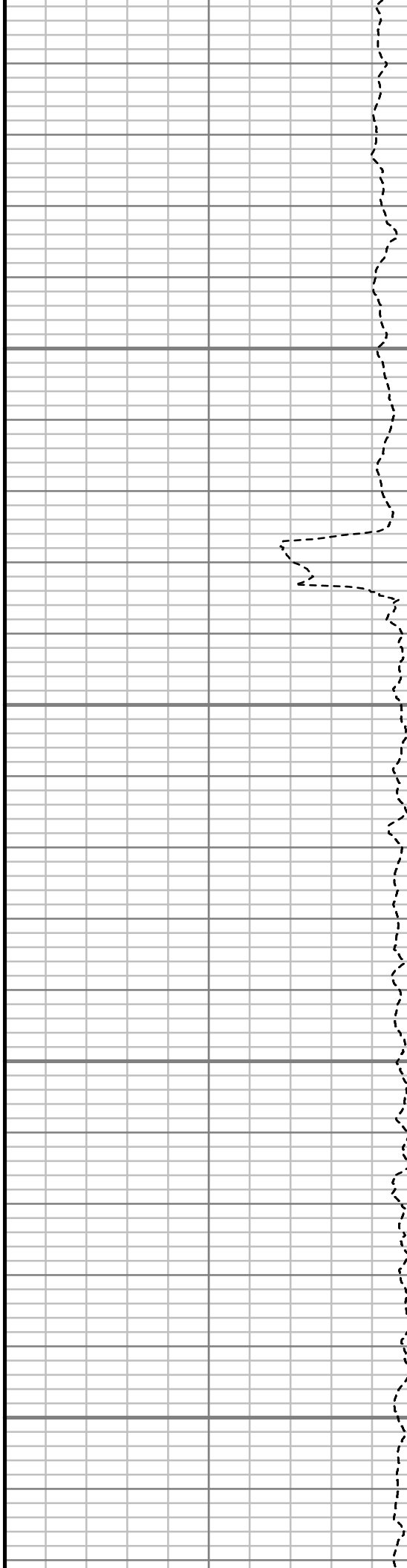


7200

7250

7300

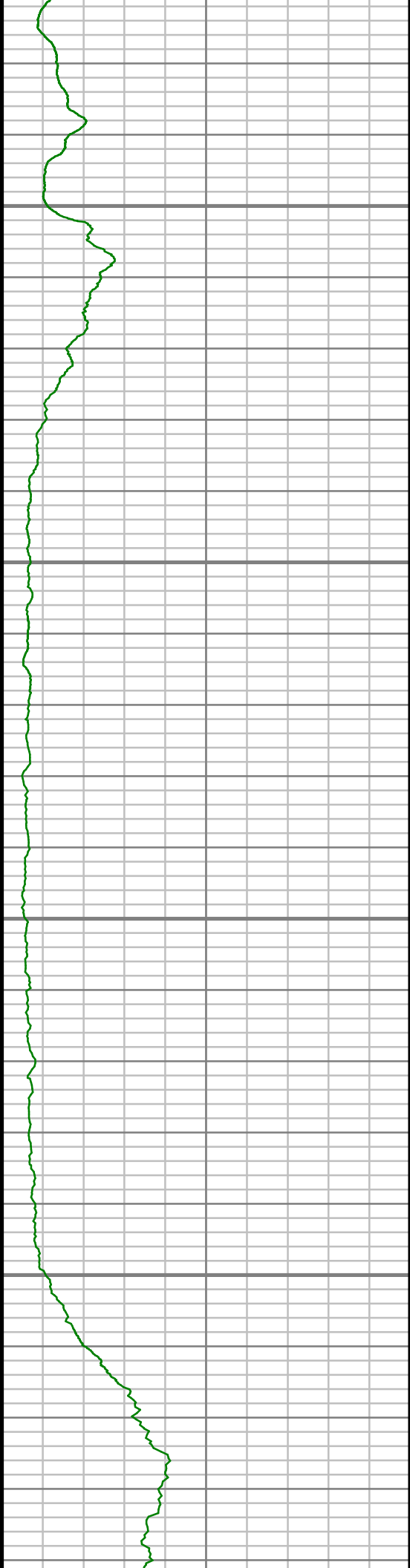
7350



S: 45 MD: 7169.00 ft Inc: 56.51
deg Az: 185.97 deg TVD:
7046.14 ft

S: 46 MD: 7264.00 ft Inc: 65.39
deg Az: 184.79 deg TVD:
7092.23 ft

S: 47 MD: 7359.00 ft Inc: 76.25
deg Az: 182.82 deg TVD:
7123.40 ft

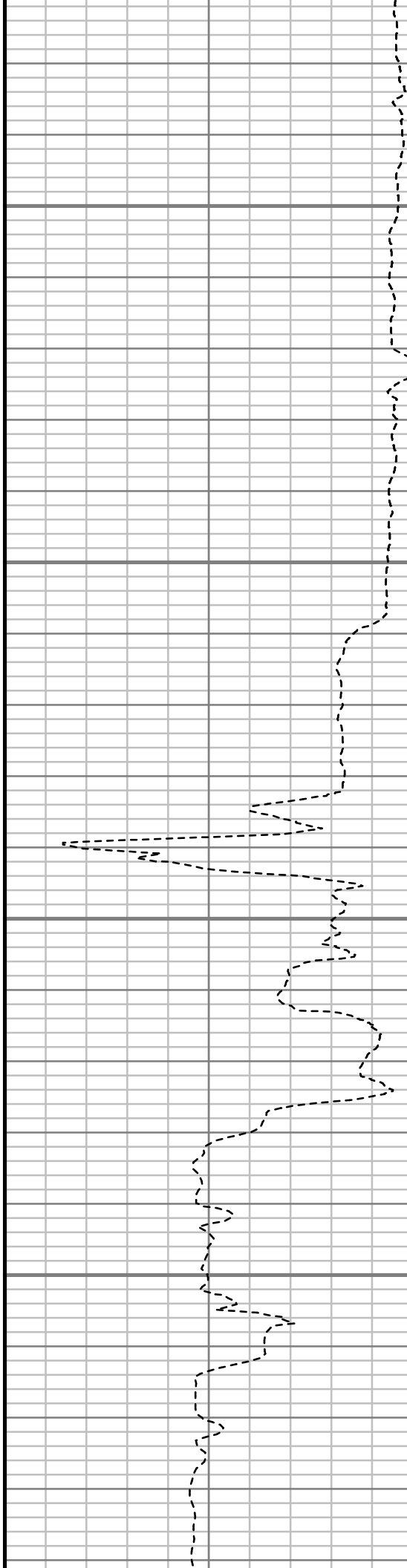


7400

7450

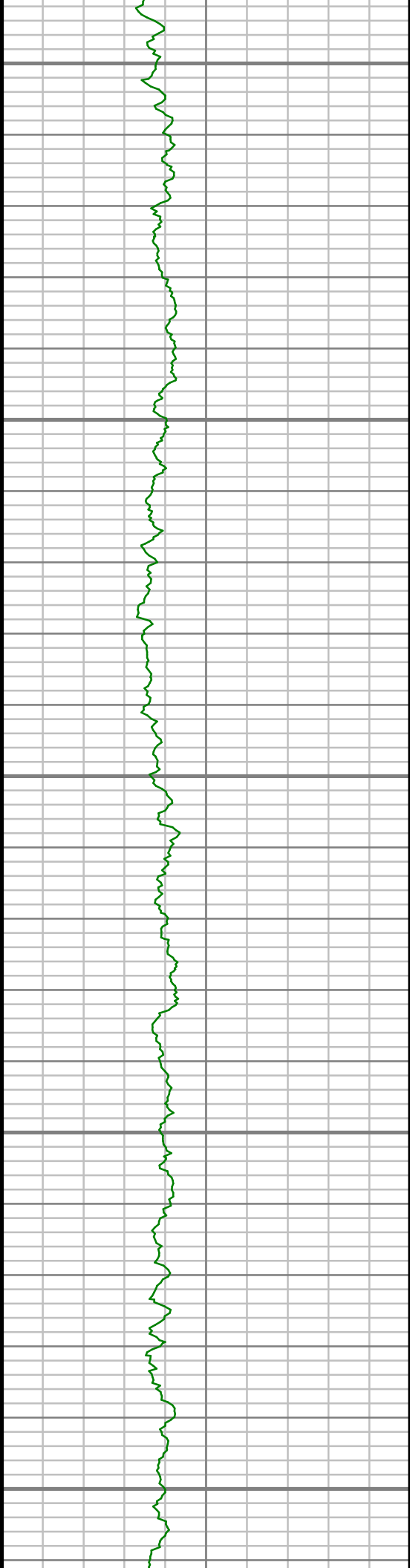
7500

7550



S: 48 MD: 7419.00 ft Inc: 84.85
deg Az: 182.89 deg TVD:
7133.24 ft

S: 49 MD: 7535.00 ft Inc: 90.74
deg Az: 181.03 deg TVD:
7137.71 ft



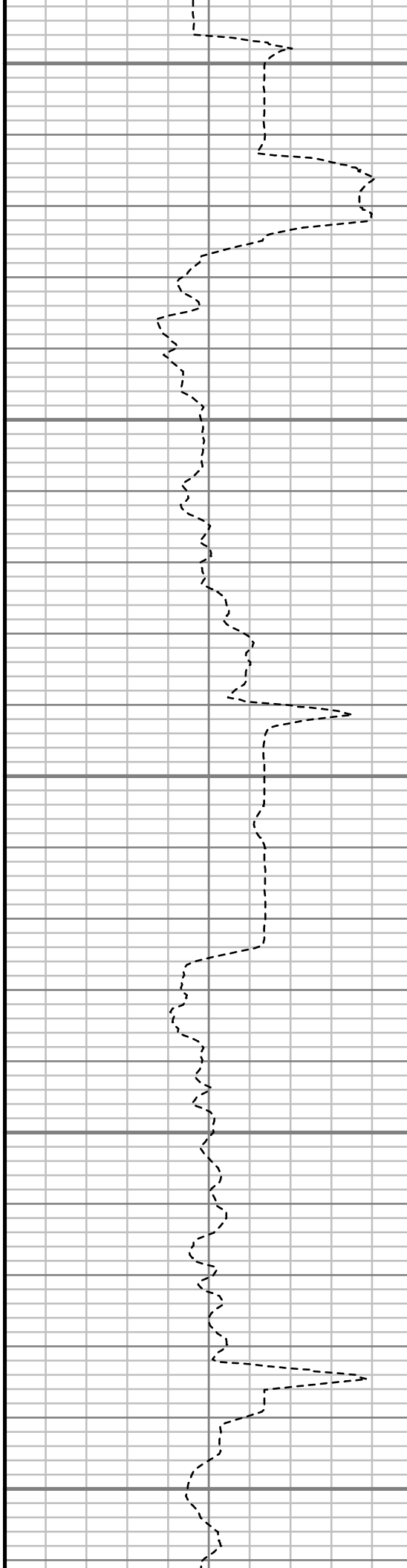
7600

7650

7700

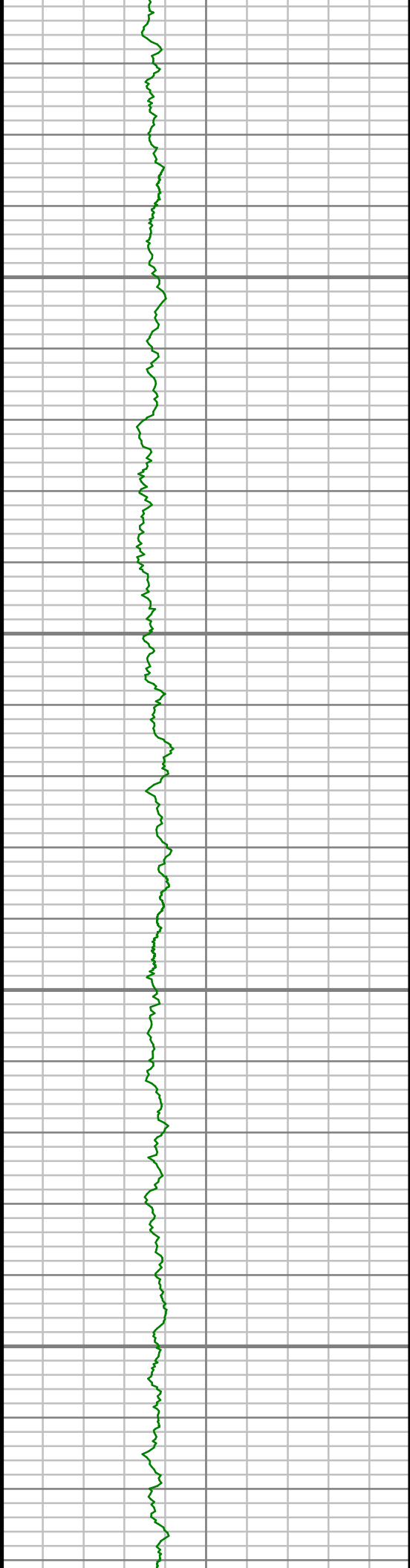
7750

7800



S: 50 MD: 7628.00 ft Inc: 90.17
deg Az: 179.58 deg TVD:
7136.97 ft

S: 51 MD: 7721.00 ft Inc: 89.66
deg Az: 178.29 deg TVD:
7137.11 ft



7850

7900

7950

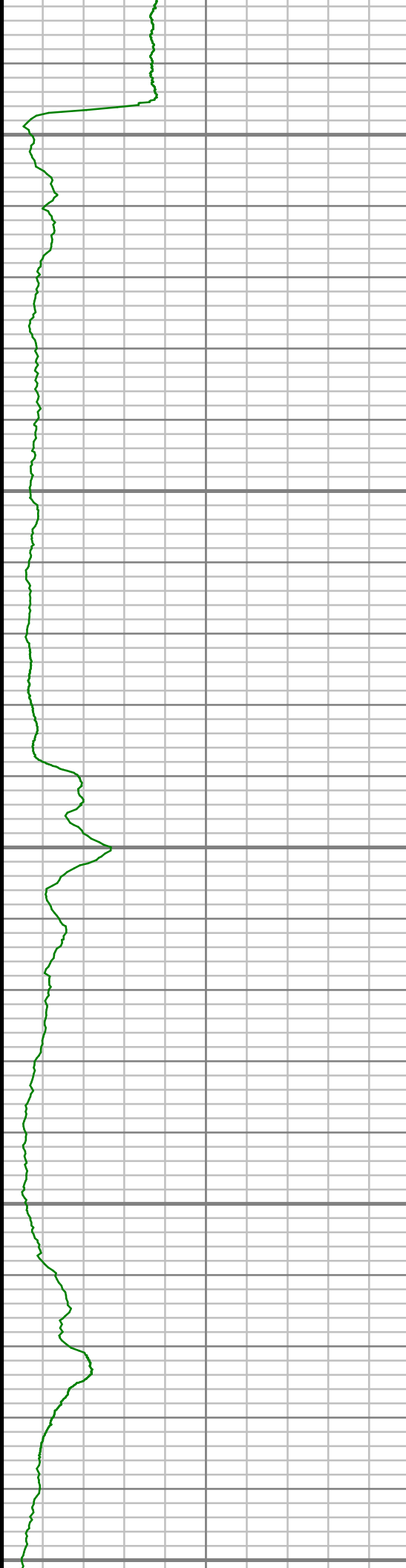
8000



S: 52 MD: 7814.00 ft Inc: 89.77
deg Az: 177.79 deg TVD:
7137.57 ft

S: 53 MD: 7909.00 ft Inc: 89.80
deg Az: 177.81 deg TVD:
7137.93 ft

S: 54 MD: 8004.00 ft Inc: 89.30
deg Az: 177.36 deg TVD:
7138.68 ft



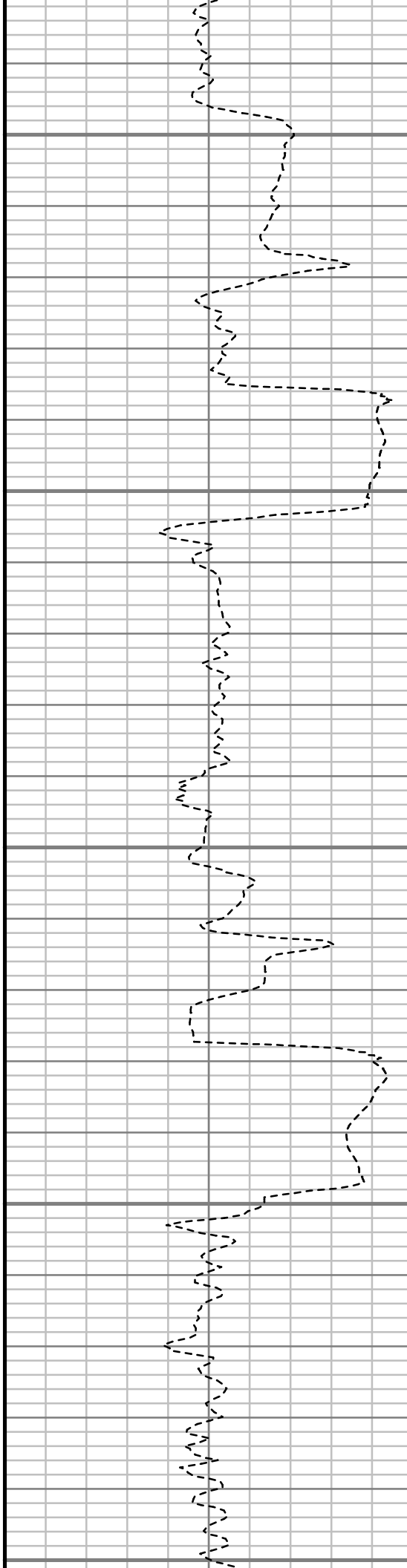
8050

8100

8150

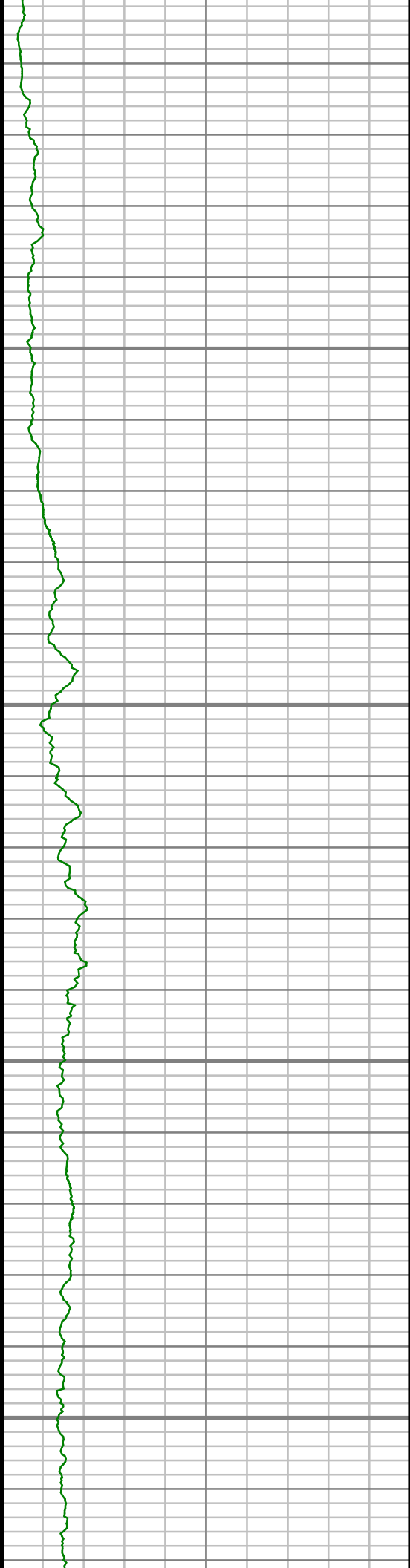
8200

8250



S: 55 MD: 8099.00 ft Inc: 91.14
deg Az: 177.35 deg TVD:
7138.32 ft

S: 56 MD: 8194.00 ft Inc: 92.38
deg Az: 178.66 deg TVD:
7135.40 ft

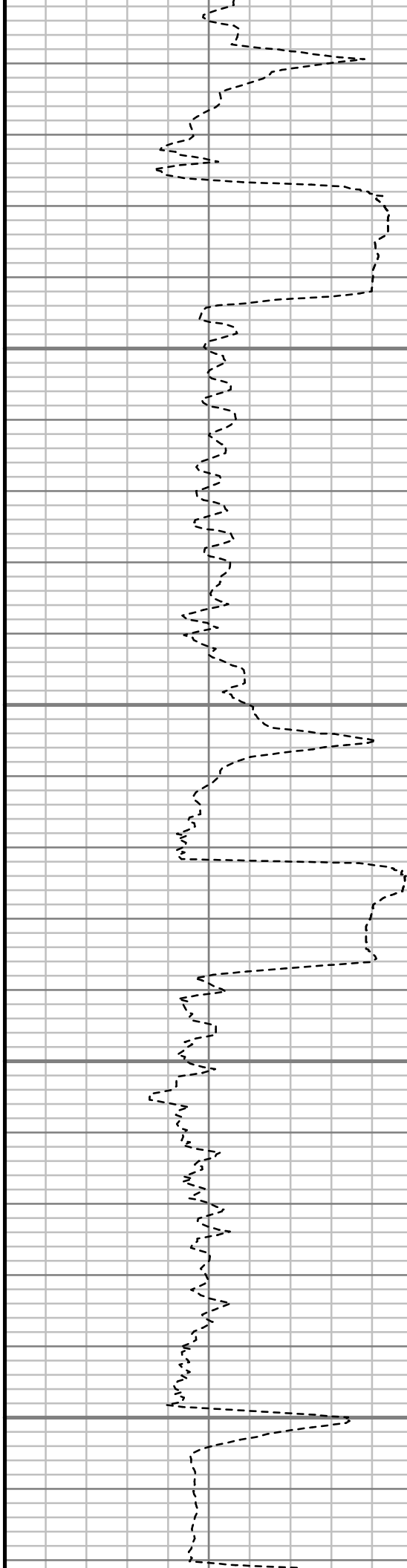


8300

8350

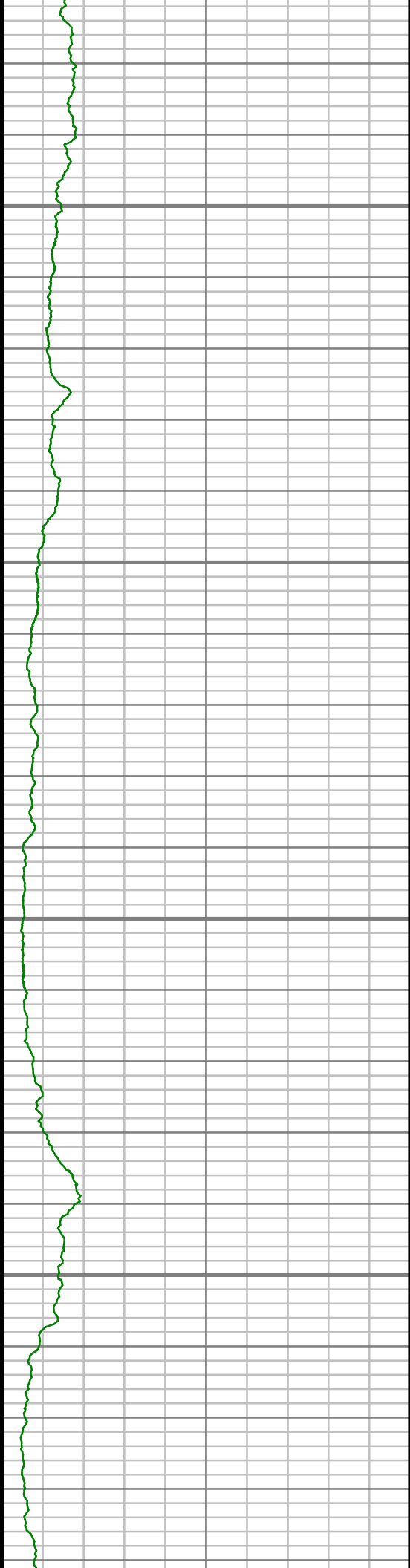
8400

8450



S: 57 MD: 8289.00 ft Inc: 91.71
deg Az: 179.65 deg TVD:
7132.00 ft

S: 58 MD: 8384.00 ft Inc: 89.97
deg Az: 179.33 deg TVD:
7130.61 ft

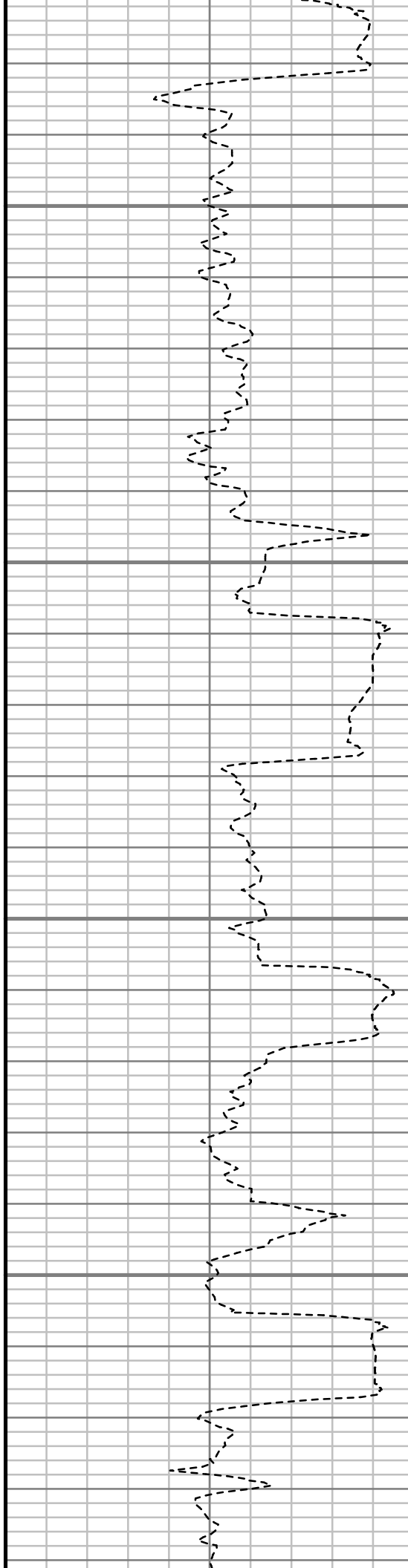


8500

8550

8600

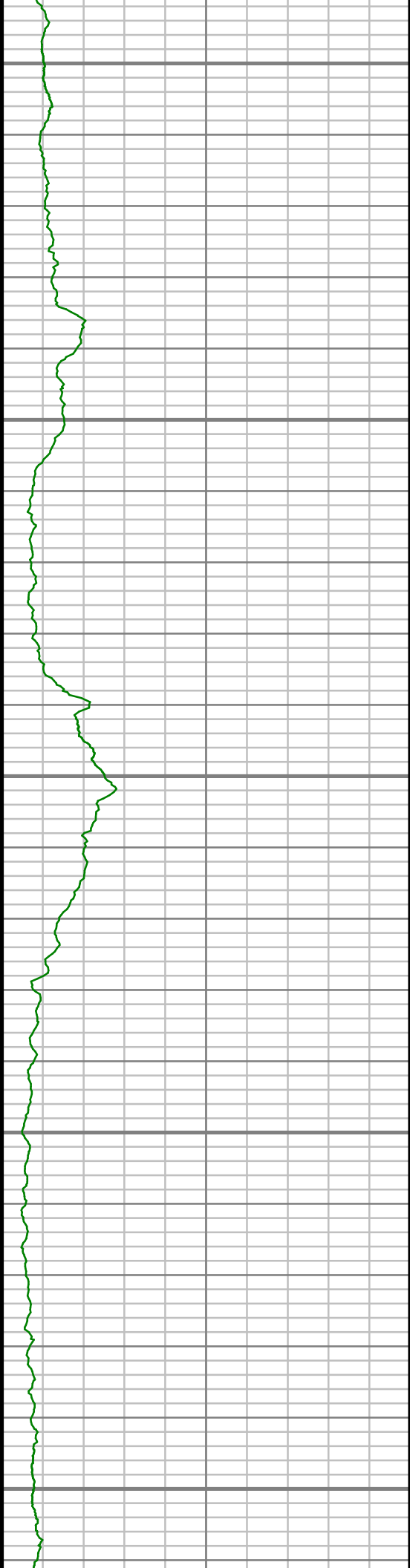
8650



S: 59 MD: 8479.00 ft Inc: 91.58
deg Az: 181.41 deg TVD:
7129.33 ft

S: 60 MD: 8574.00 ft Inc: 90.84
deg Az: 180.92 deg TVD:
7127.33 ft

S: 61 MD: 8670.00 ft Inc: 89.20
deg Az: 180.45 deg TVD:
7127.30 ft



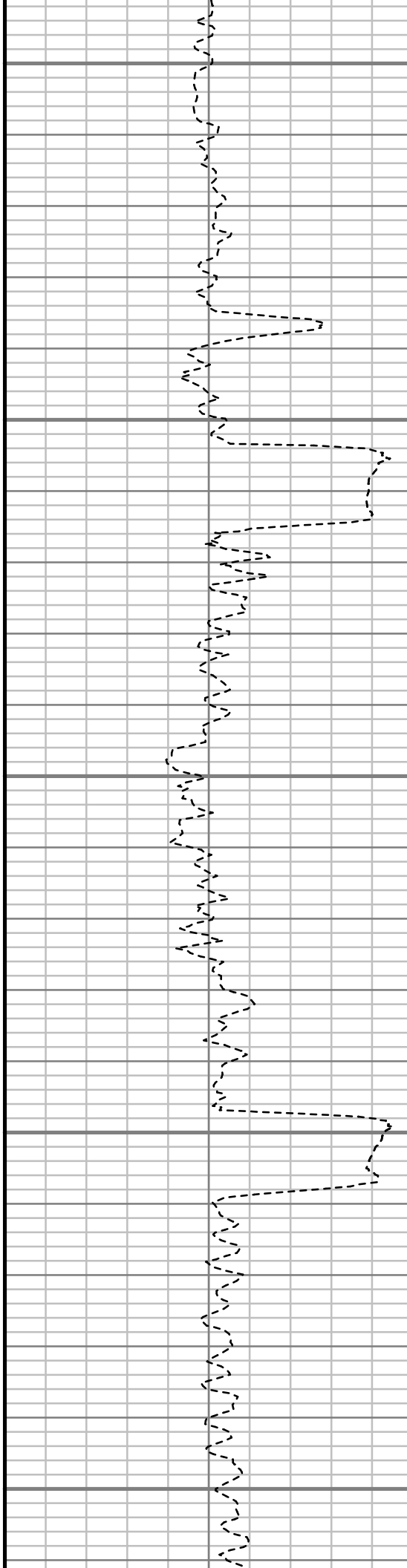
8700

8750

8800

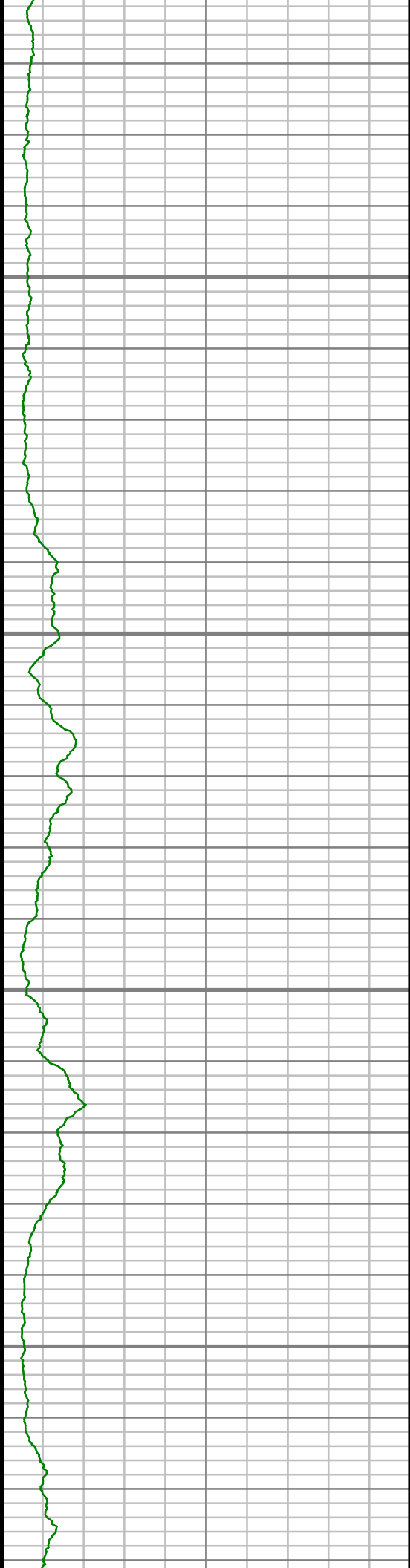
8850

8900



S: 62 MD: 8765.00 ft Inc: 88.42
deg Az: 179.90 deg TVD:
7129.27 ft

S: 63 MD: 8860.00 ft Inc: 87.72
deg Az: 180.07 deg TVD:
7132.48 ft

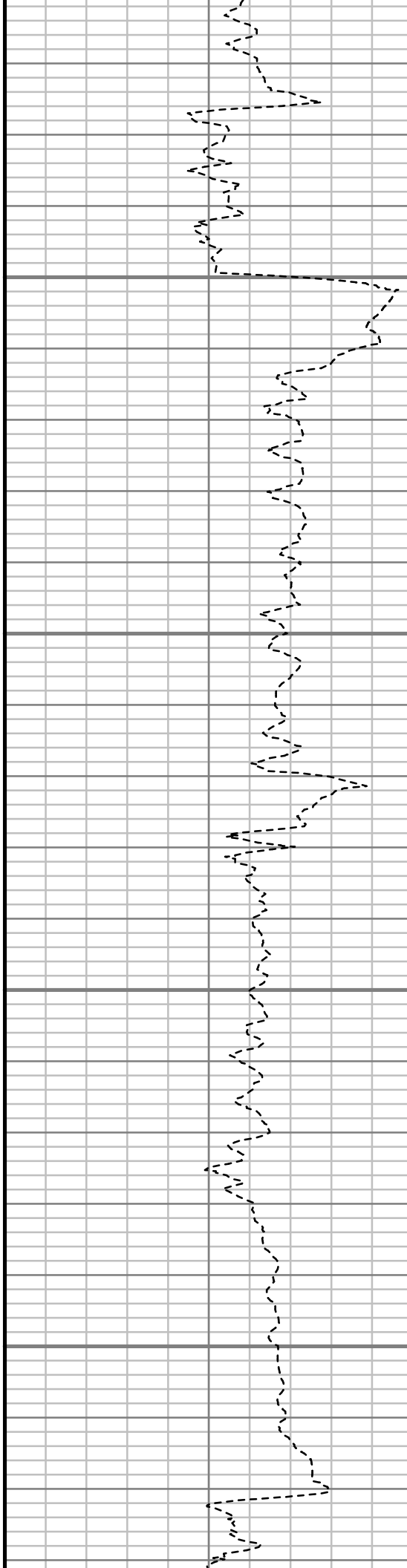


8950

9000

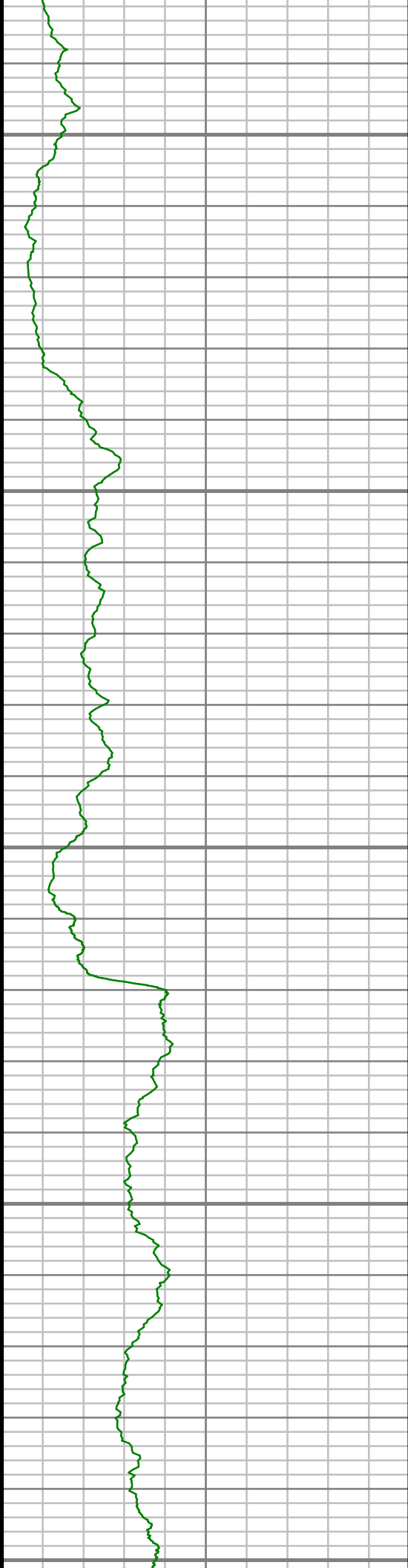
9050

9100



S: 64 MD: 8955.00 ft Inc: 89.13
deg Az: 179.64 deg TVD:
7135.09 ft

S: 65 MD: 9051.00 ft Inc: 89.73
deg Az: 180.28 deg TVD:
7136.05 ft



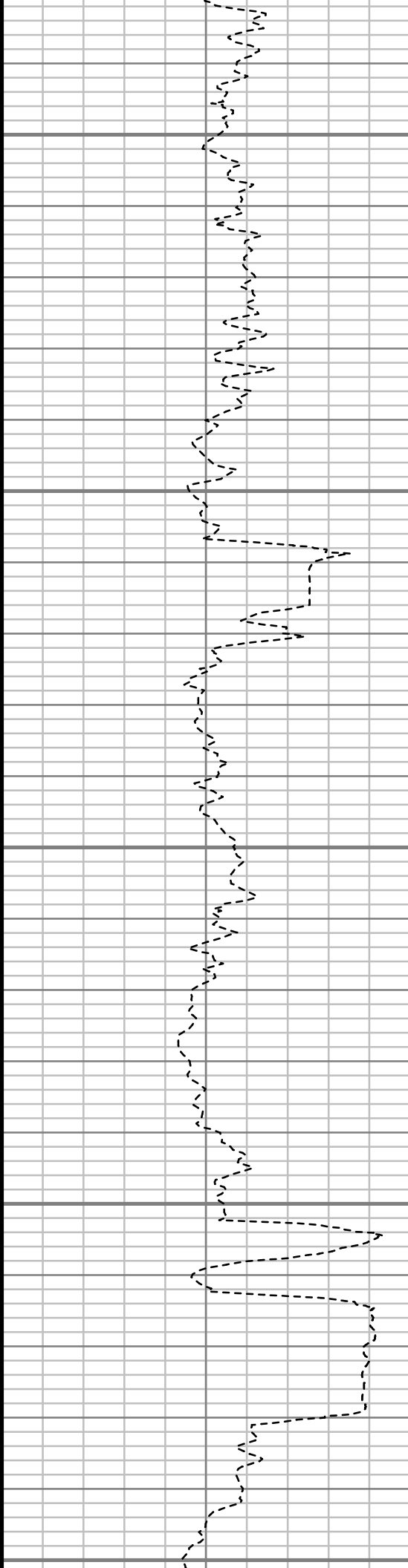
9150

9200

9250

9300

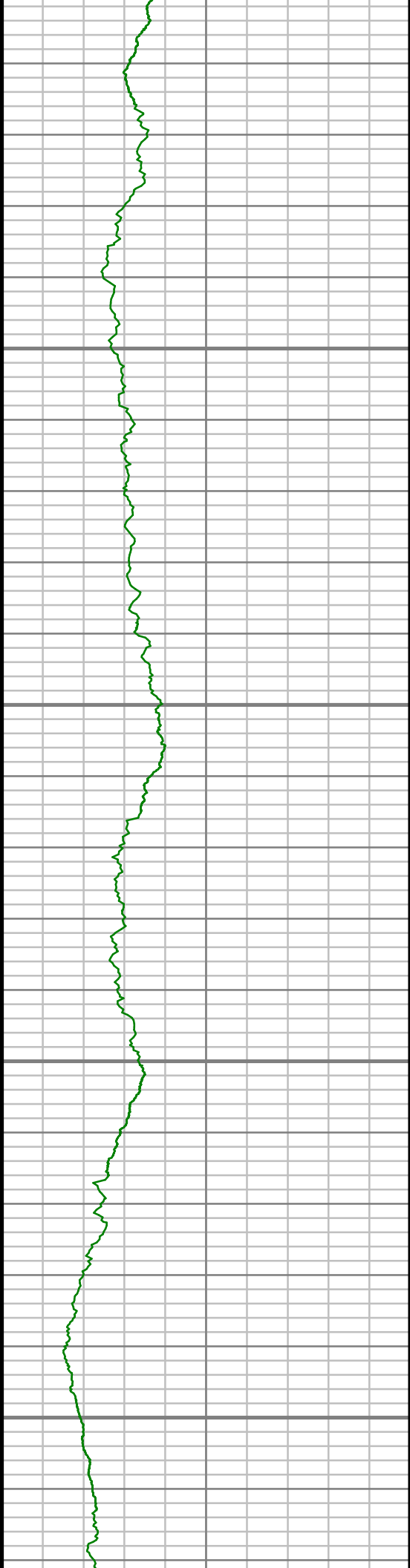
9350



S: 66 MD: 9146.00 ft Inc: 90.20
deg Az: 179.56 deg TVD:
7136.10 ft

S: 67 MD: 9241.00 ft Inc: 90.50
deg Az: 177.58 deg TVD:
7135.52 ft

S: 68 MD: 9337.00 ft Inc: 89.53
deg Az: 178.23 deg TVD:
7135.49 ft

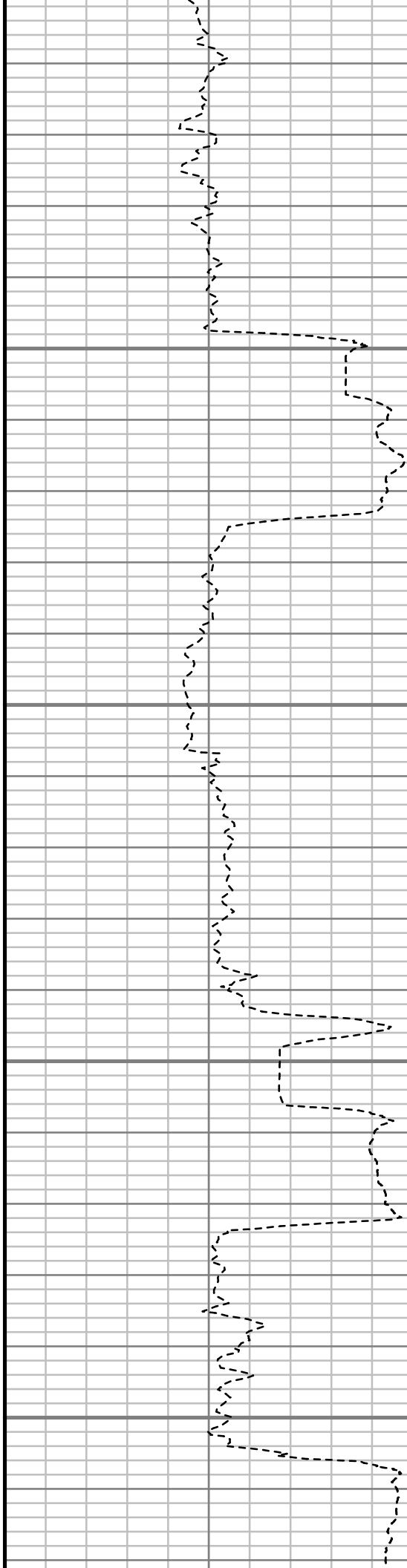


9400

9450

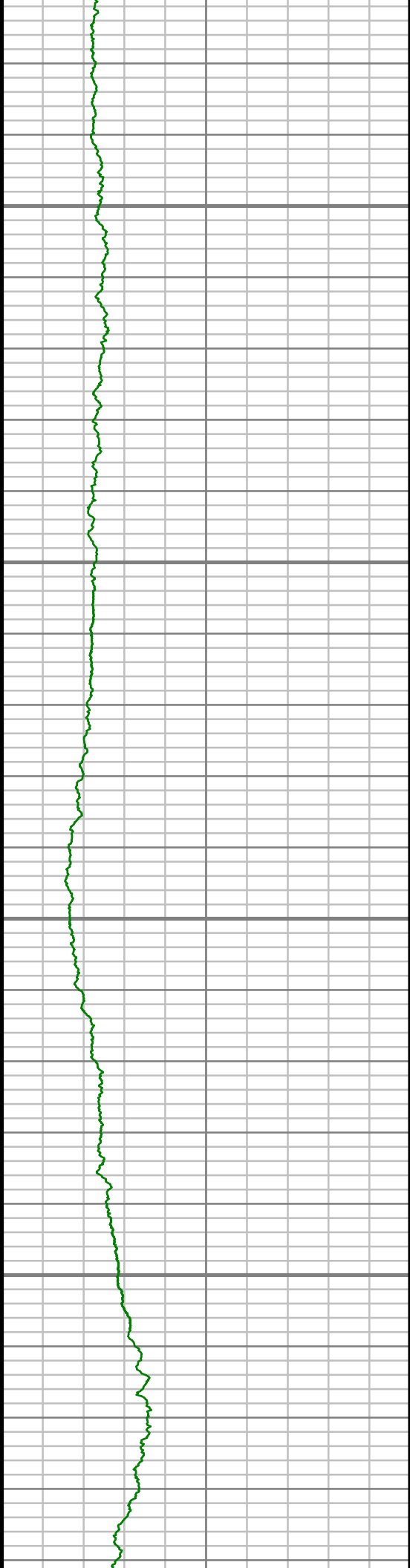
9500

9550



S: 69 MD: 9432.00 ft Inc: 89.63
deg Az: 178.05 deg TVD:
7136.19 ft

S: 70 MD: 9527.00 ft Inc: 89.77
deg Az: 178.35 deg TVD:
7136.69 ft

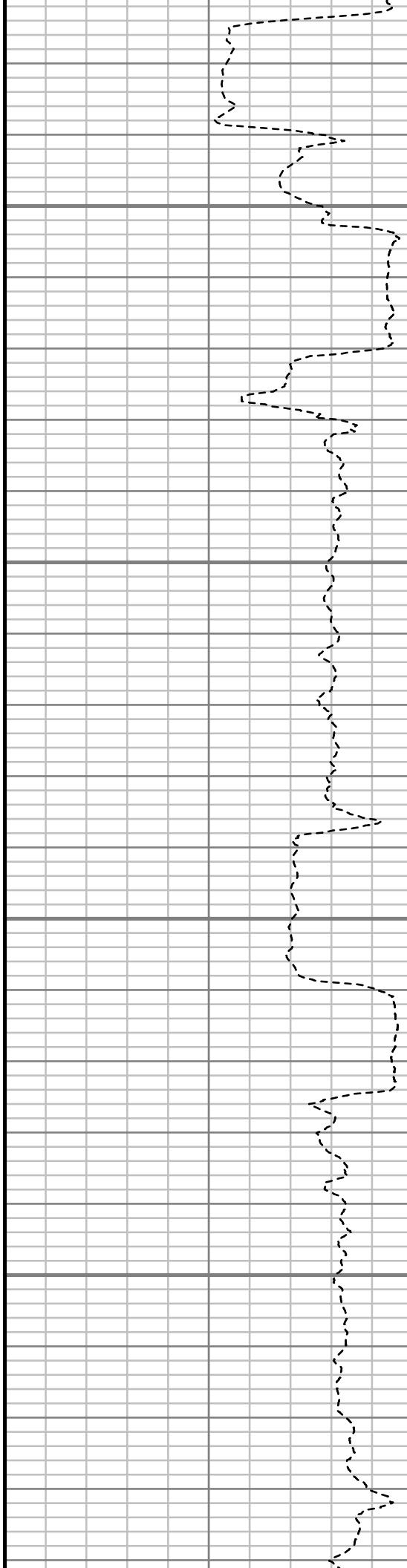


9600

9650

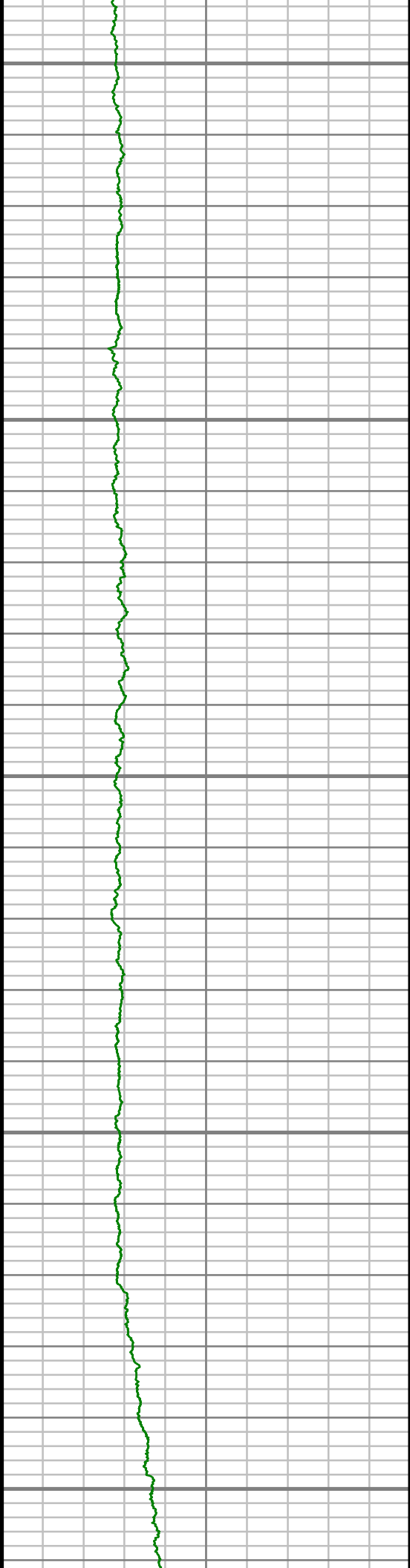
9700

9750



S: 71 MD: 9622.00 ft Inc: 92.38
deg Az: 180.17 deg TVD:
7134.91 ft

S: 72 MD: 9718.00 ft Inc: 92.38
deg Az: 179.63 deg TVD:
7130.92 ft



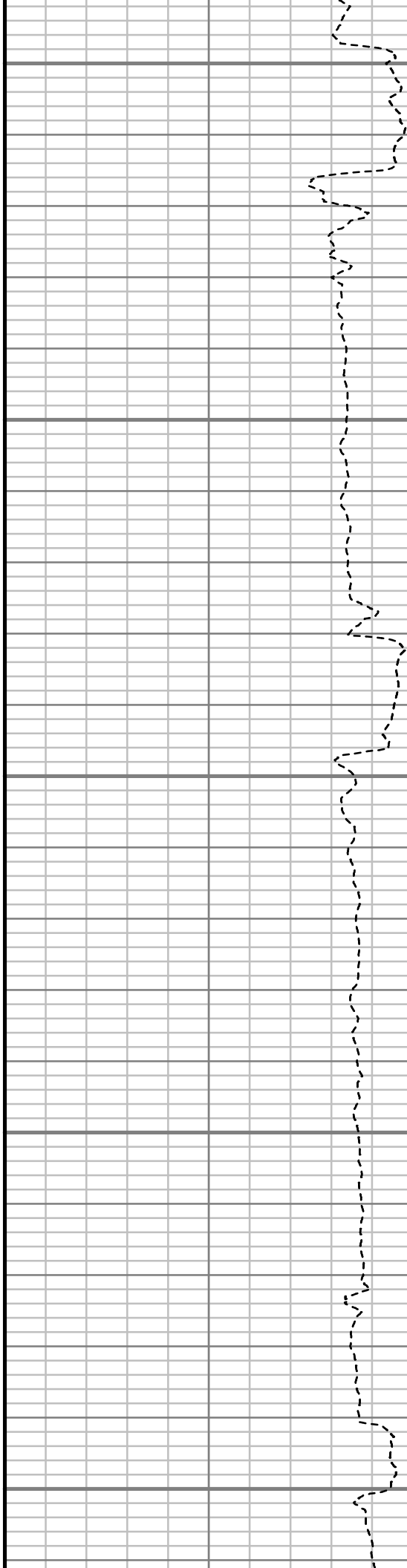
9800

9850

9900

9950

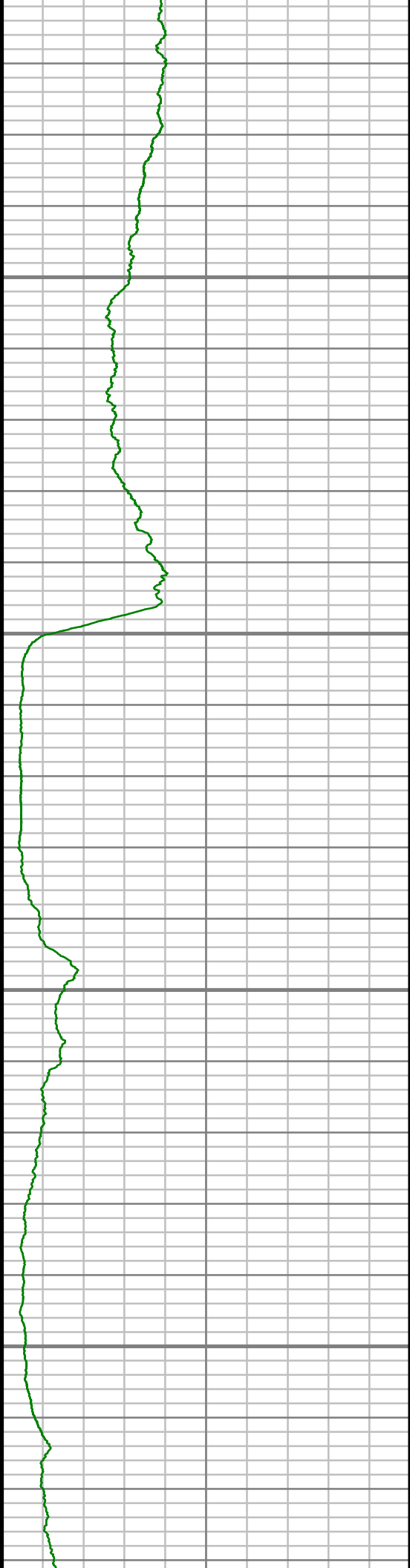
10000



S: 73 MD: 9813.00 ft Inc: 91.61
deg Az: 181.21 deg TVD:
7127.61 ft

S: 74 MD: 9908.00 ft Inc: 90.24
deg Az: 181.37 deg TVD:
7126.08 ft

S: 75 MD: 10003.00 ft Inc:
90.34 deg Az: 181.81 deg TVD:
7125.60 ft

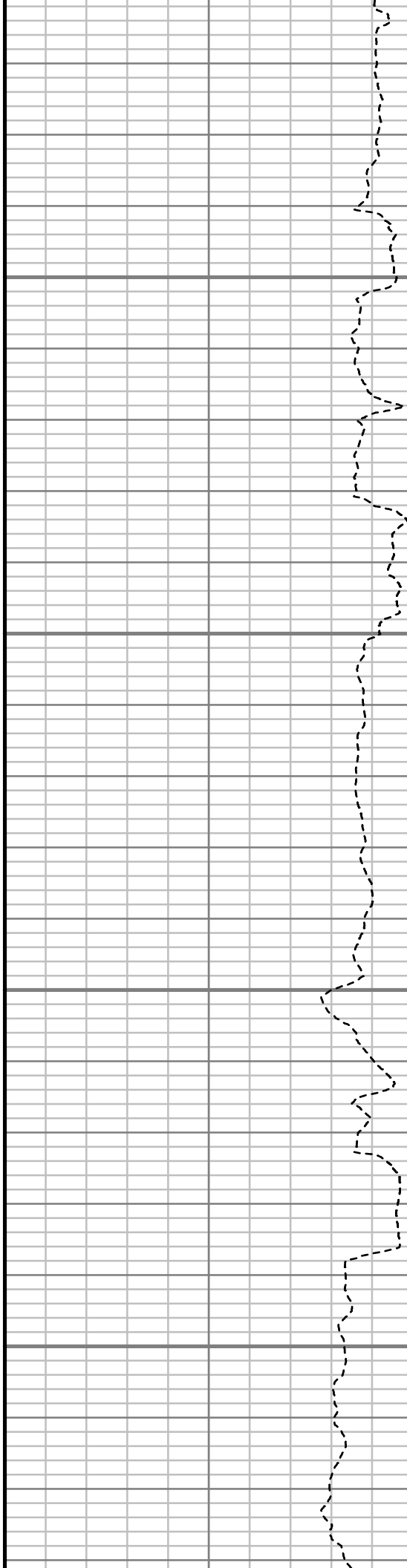


10050

10100

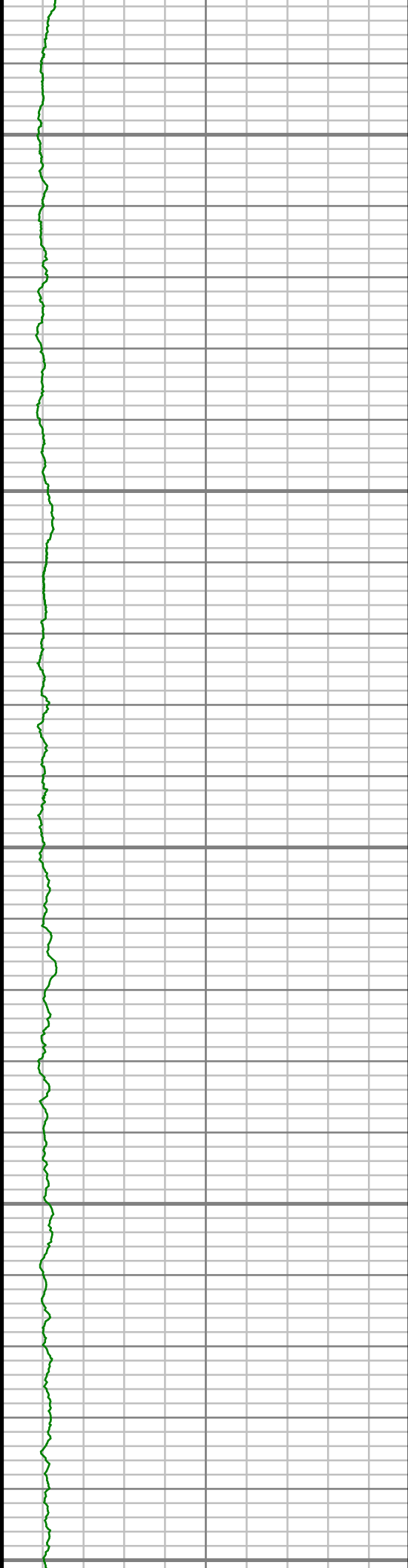
10150

10200



S: 76 MD: 10098.00 ft Inc:
88.96 deg Az: 182.46 deg TVD:
7126.19 ft

S: 77 MD: 10194.00 ft Inc:
88.12 deg Az: 182.95 deg TVD:
7128.63 ft



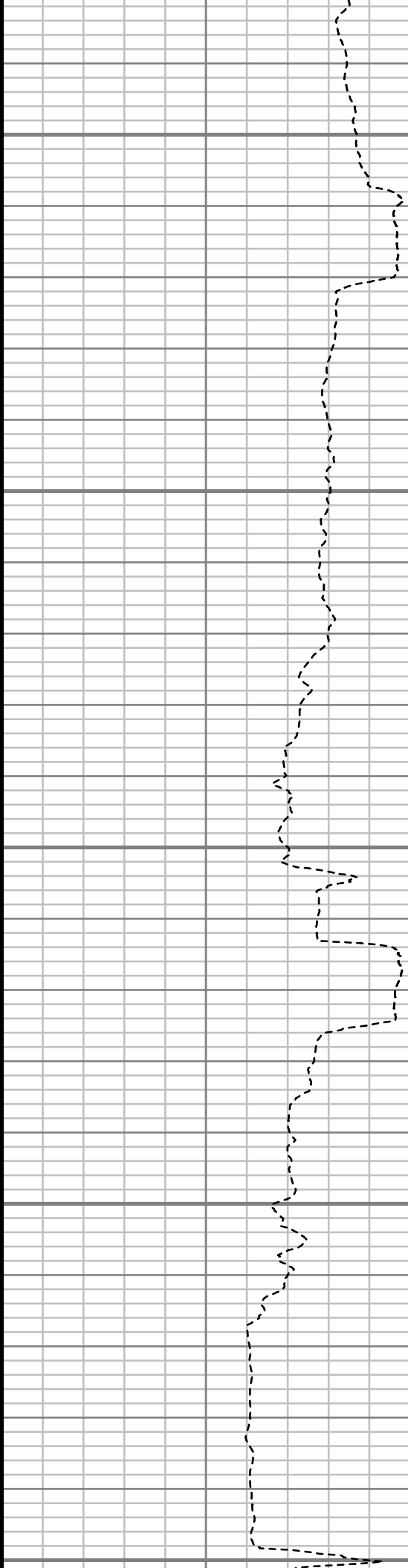
10250

10300

10350

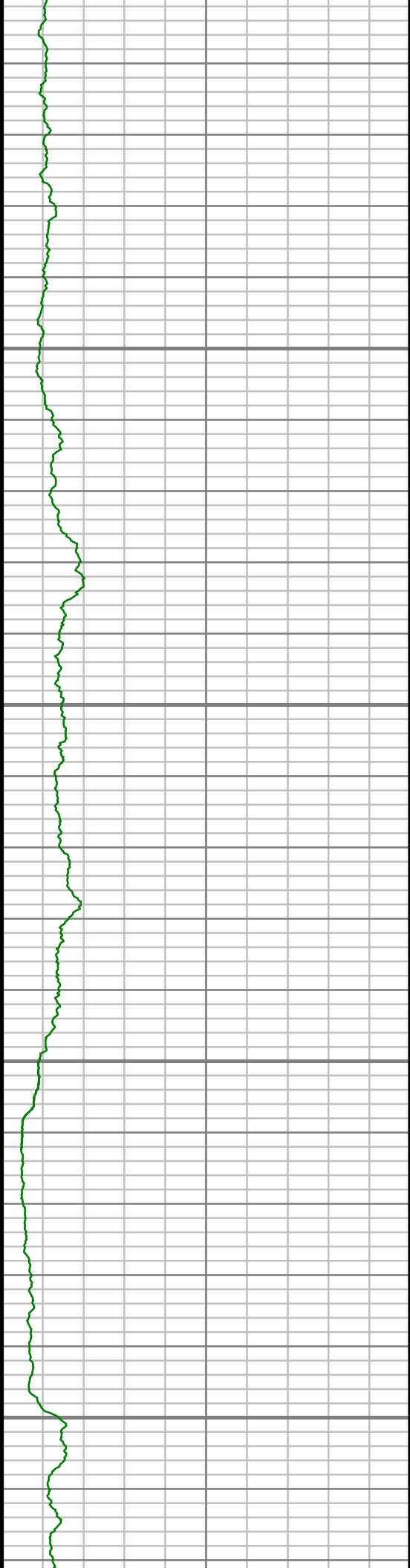
10400

10450



S: 78 MD: 10289.00 ft Inc:
89.56 deg Az: 181.44 deg TVD:
7130.55 ft

S: 79 MD: 10384.00 ft Inc:
88.32 deg Az: 179.42 deg TVD:
7132.30 ft

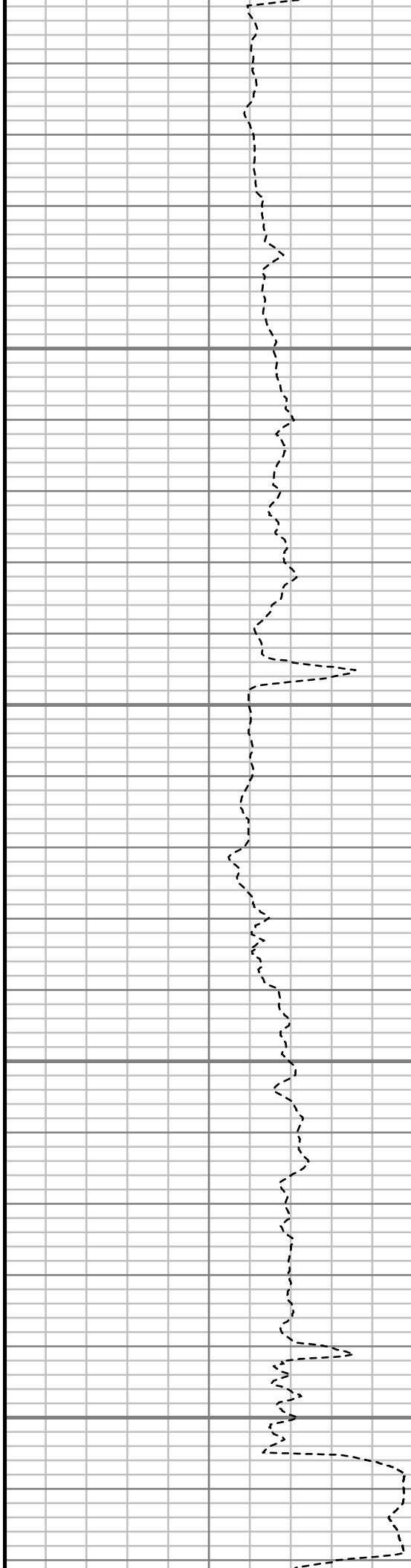


10500

10550

10600

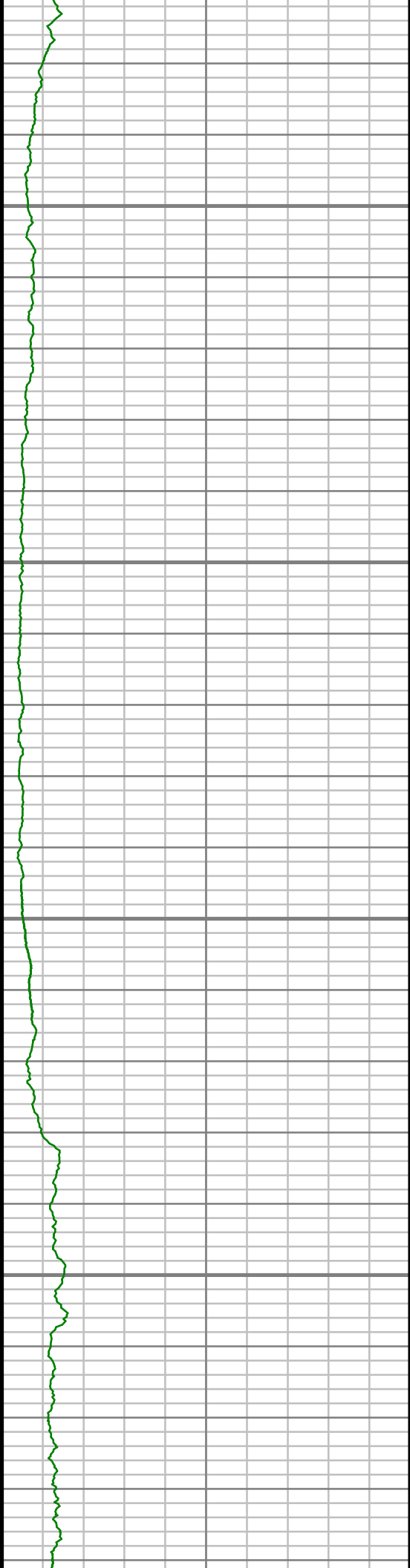
10650



S: 80 MD: 10479.00 ft Inc:
89.66 deg Az: 180.51 deg TVD:
7133.97 ft

S: 81 MD: 10575.00 ft Inc:
90.91 deg Az: 180.51 deg TVD:
7133.49 ft

S: 82 MD: 10670.00 ft Inc:

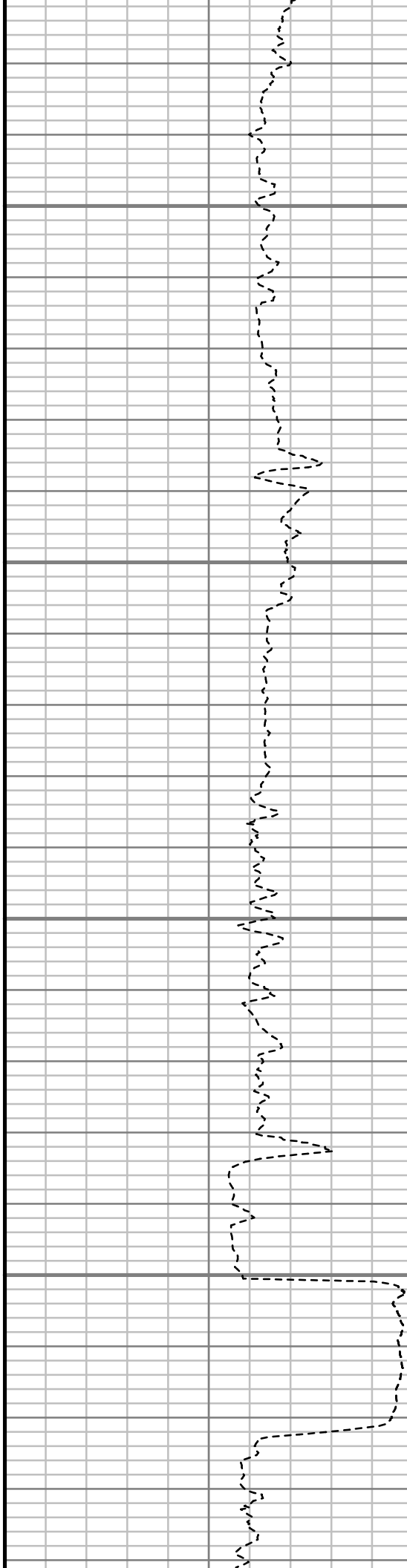


10700

10750

10800

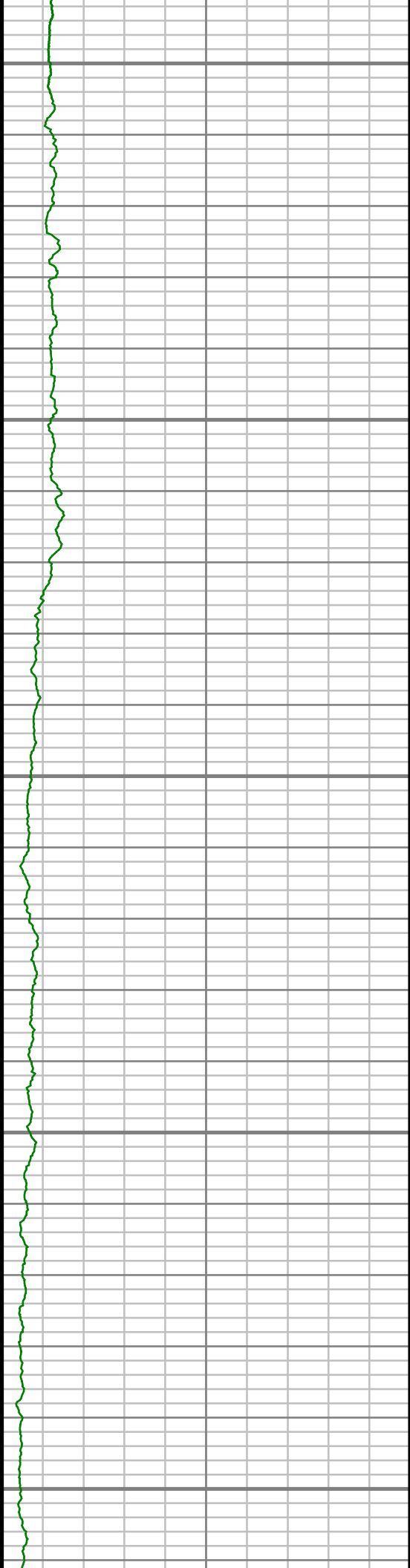
10850



S: 82 MD: 10670.00 ft Inc:
89.66 deg Az: 180.21 deg TVD:
7133.02 ft

S: 83 MD: 10765.00 ft Inc:
90.60 deg Az: 179.81 deg TVD:
7132.80 ft

S: 84 MD: 10860.00 ft Inc:
89.43 deg Az: 178.31 deg TVD:
7132.77 ft



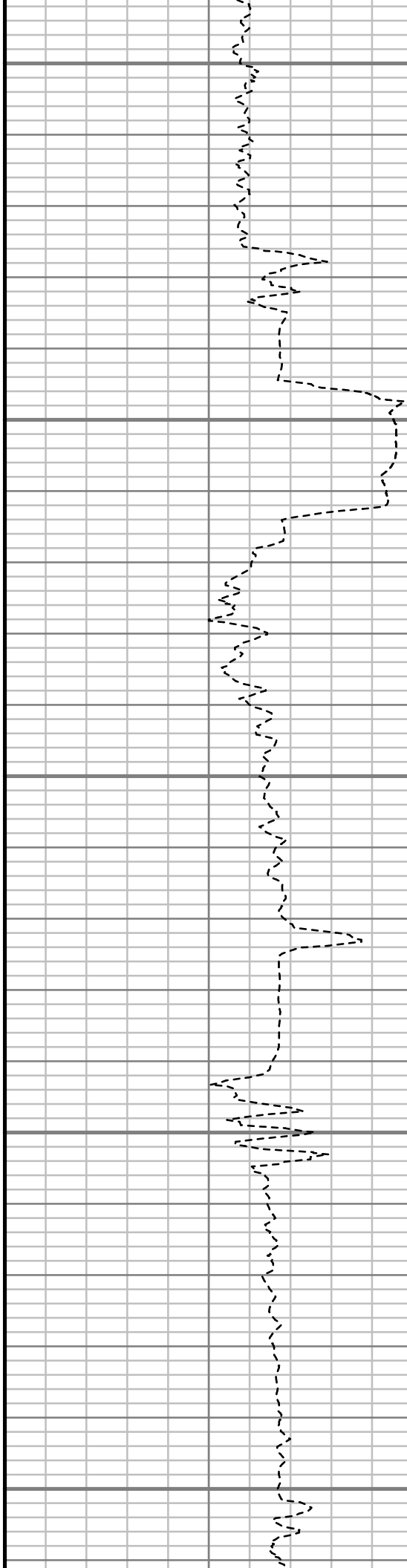
10900

10950

11000

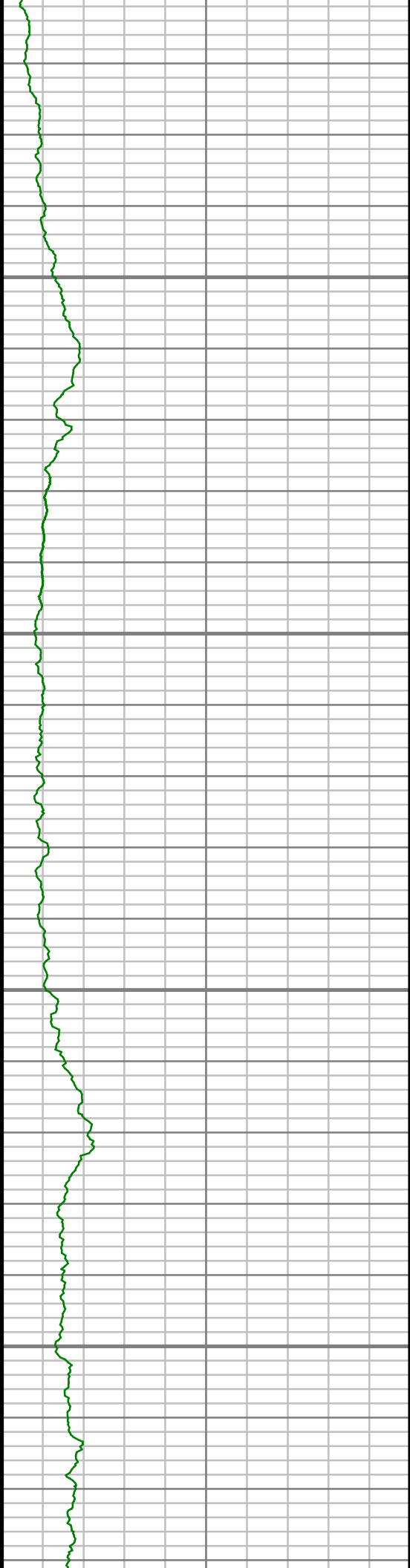
11050

11100



S: 85 MD: 10956.00 ft Inc:
88.49 deg Az: 178.10 deg TVD:
7134.51 ft

S: 86 MD: 11051.00 ft Inc:
88.93 deg Az: 178.04 deg TVD:
7136.65 ft

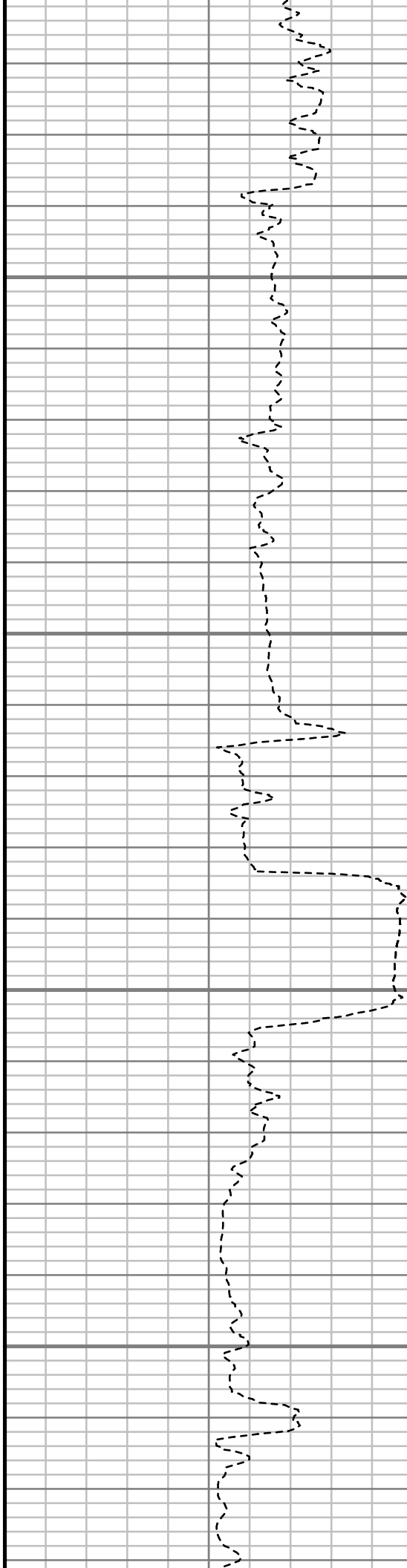


11150

11200

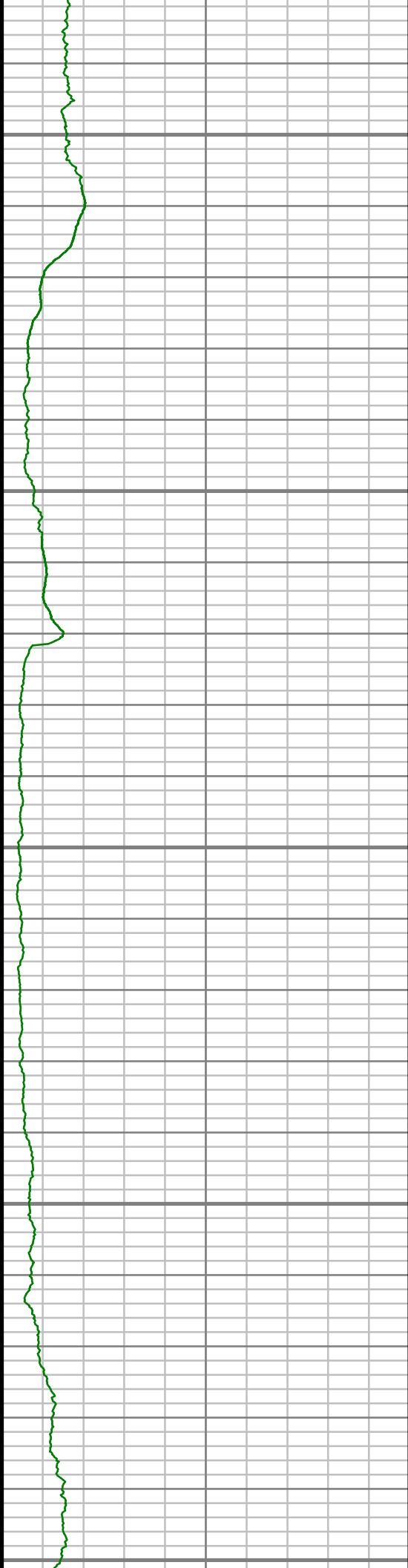
11250

11300



S: 87 MD: 11146.00 ft Inc:
90.00 deg Az: 177.20 deg TVD:
7137.54 ft

S: 88 MD: 11242.00 ft Inc:
90.13 deg Az: 177.61 deg TVD:
7137.43 ft



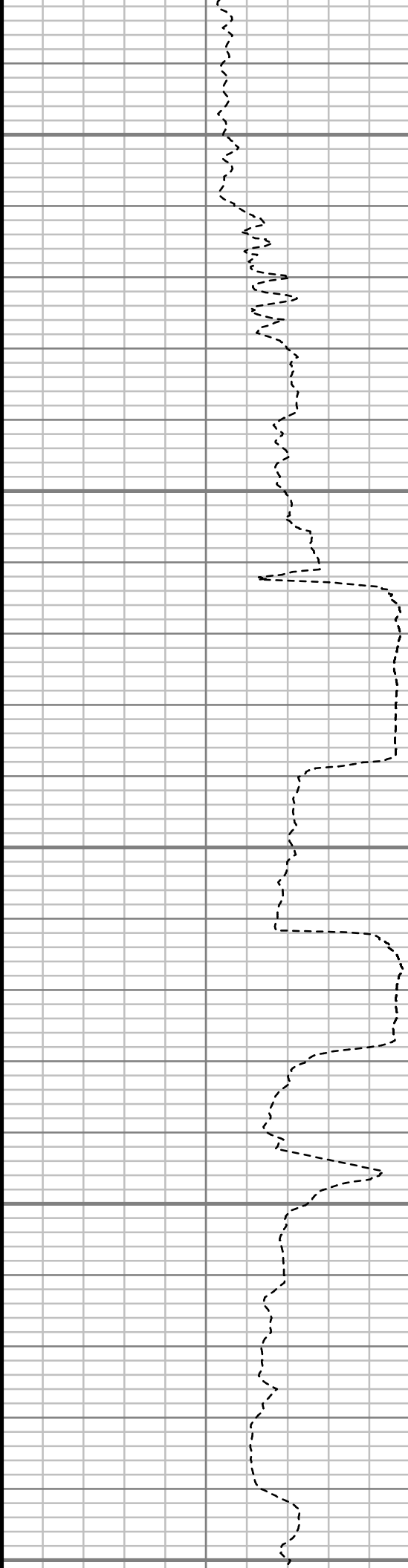
11350

11400

11450

11500

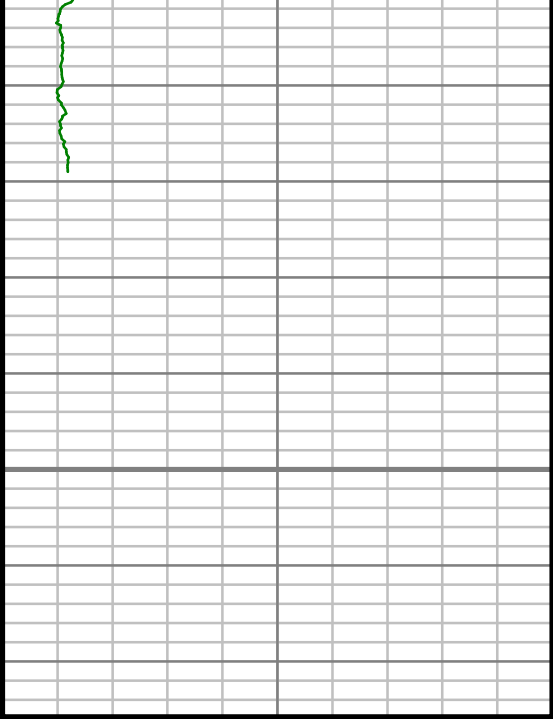
11550



S: 89 MD: 11337.00 ft Inc:
88.06 deg Az: 174.08 deg TVD:
7138.93 ft

S: 90 MD: 11432.00 ft Inc:
88.62 deg Az: 170.99 deg TVD:
7141.68 ft

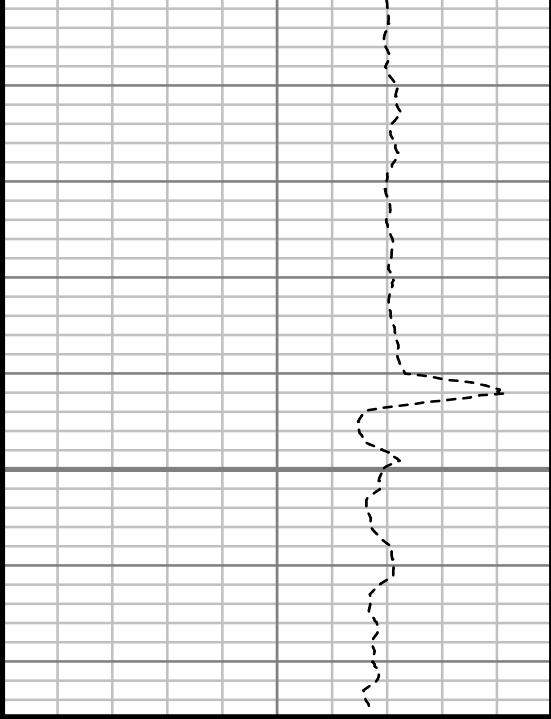
S: 91 MD: 11527.00 ft Inc:
91.31 deg Az: 171.48 deg TVD:
7141.74 ft



Gamma Ray (GR)		
0	Unit = aapi	150

11600

MEASURED DEPTH
1:240 (ft)



Rate of Penetration (ROP)		
600	Unit = ft/hr	0

S: 92 MD: 11562.00 ft Inc:
90.87 deg Az: 170.86 deg TVD:
7141.07 ft

Comments



MWD Survey Report

Well Location	NEWNAM
Well Name	NEWNAM 2I-32H-C264
Survey Date	1/9/2015
Latitude	40°6'5.278"N
Longitude	104°34'42.323"W
Btotal	52501 nT
Dip	66.71 deg
Magnetic Declination	8.36 deg
North Reference	True North
Grid Correction	None
Depth Reference	RKB (13.00 ft)
Calculation Method	Minimum Curvature
Section (VS) Ref	0.00N (ft), 0.00E (ft), 180.00Azim (deg)
Operator(s)	J. QUIMBY, M. SMITH, T. MORGAN

Well Notes

MD	Inc	Azim	TVD	VS	+N/-S	+E/-W	Closure Direction	Closure Distance	DLS
ft	deg	deg	ft	ft	ft	ft	deg	ft	"/100ft
0.00	0.00	0.00	0.00	0.00	0.00	0.00	0.00	0.00	Invalid
302.00	0.41	117.42	302.00	0.50	-0.50	0.96	117.42	1.08	0.14
425.00	2.47	16.84	424.96	-1.83	1.83	2.12	49.10	2.80	2.09
518.00	3.58	5.78	517.83	-6.64	6.64	2.99	24.25	7.28	1.34
642.00	6.57	21.10	641.34	-17.10	17.10	5.93	19.13	18.10	2.63
735.00	7.99	22.93	733.58	-28.02	28.02	10.37	20.30	29.88	1.55
828.00	9.31	27.21	825.52	-40.67	40.67	16.32	21.87	43.82	1.57
920.00	9.43	27.97	916.30	-53.94	53.94	23.26	23.33	58.74	0.19
980.00	9.79	27.86	975.46	-62.79	62.79	27.95	23.99	68.73	0.61
1085.00	9.62	27.89	1078.95	-78.44	78.44	36.23	24.79	86.40	0.16
1271.00	10.46	28.55	1262.10	-107.01	107.01	51.57	25.73	118.79	0.46
1457.00	10.78	27.64	1444.91	-137.26	137.26	67.71	26.26	153.05	0.20
1647.00	10.59	25.47	1631.62	-168.77	168.77	83.46	26.31	188.28	0.23
1838.00	9.61	33.59	1819.67	-197.90	197.90	99.83	26.77	221.65	0.91
2029.00	9.50	30.79	2008.02	-224.71	224.71	116.72	27.45	253.22	0.25
2219.00	6.83	30.48	2196.07	-247.93	247.93	130.48	27.76	280.17	1.40
2410.00	3.67	30.08	2386.25	-263.01	263.01	139.31	27.91	297.63	1.66
2601.00	0.74	69.32	2577.09	-268.73	268.73	143.52	28.11	304.65	1.64
2791.00	0.63	81.10	2767.08	-269.32	269.32	145.69	28.41	306.20	0.09

MD	Inc	Azim	TVD	VS	+N/-S	+E/-W	Closure Direction	Closure Distance	DLS
ft	deg	deg	ft	ft	ft	ft	deg	ft	°/100ft
2982.00	0.32	129.06	2958.07	-269.15	269.15	147.13	28.66	306.74	0.25
3172.00	0.55	154.23	3148.07	-267.99	267.99	147.94	28.90	306.11	0.16
3363.00	0.05	163.23	3339.06	-267.09	267.09	148.36	29.05	305.53	0.27
3553.00	0.33	296.42	3529.06	-267.26	267.26	147.89	28.96	305.45	0.19
3743.00	0.24	257.05	3719.06	-267.41	267.41	147.01	28.80	305.16	0.11
3933.00	1.11	170.91	3909.05	-265.51	265.51	146.91	28.96	303.44	0.59
4124.00	1.13	175.43	4100.01	-261.81	261.81	147.35	29.37	300.43	0.05
4315.00	1.17	22.57	4291.00	-261.74	261.74	148.25	29.53	300.81	1.17
4505.00	1.48	8.08	4480.95	-265.96	265.96	149.34	29.31	305.02	0.24
4696.00	1.04	350.51	4671.90	-270.11	270.11	149.40	28.95	308.68	0.30
4886.00	1.08	347.69	4861.87	-273.57	273.57	148.73	28.53	311.38	0.03
5077.00	1.90	332.23	5052.80	-278.13	278.13	146.87	27.84	314.53	0.48
5267.00	0.84	293.38	5242.75	-281.48	281.48	144.12	27.11	316.23	0.71
5457.00	0.82	199.62	5432.74	-280.76	280.76	142.38	26.89	314.80	0.64
5647.00	1.24	202.83	5622.71	-277.58	277.58	141.12	26.95	311.40	0.23
5837.00	1.72	183.89	5812.64	-272.85	272.85	140.13	27.18	306.73	0.35
6027.00	1.43	166.91	6002.57	-267.70	267.70	140.48	27.69	302.32	0.29
6217.00	0.97	94.09	6192.54	-265.28	265.28	142.62	28.26	301.19	0.77

MD	Inc	Azim	TVD	VS	+N/-S	+E/-W	Closure Direction	Closure Distance	DLS
ft	deg	deg	ft	ft	ft	ft	deg	ft	°/100ft
6407.00	0.42	130.96	6382.53	-264.71	264.71	144.76	28.67	301.71	0.36
6502.00	6.54	179.17	6477.31	-259.07	259.07	145.10	29.25	296.94	6.60
6597.00	12.38	177.01	6570.98	-243.48	243.48	145.71	30.90	283.75	6.16
6692.00	15.99	175.94	6663.07	-220.25	220.25	147.16	33.75	264.89	3.81
6788.00	23.64	178.84	6753.32	-187.77	187.77	148.49	38.34	239.39	8.04
6883.00	32.97	177.95	6836.87	-142.79	142.79	149.81	46.37	206.96	9.82
6978.00	36.52	180.88	6914.92	-88.68	88.68	150.30	59.46	174.51	4.13
7074.00	46.21	184.10	6986.90	-25.40	25.40	147.37	80.22	149.54	10.33
7169.00	56.51	185.97	7046.14	48.40	-48.40	140.78	108.97	148.87	10.95
7264.00	65.39	184.79	7092.23	131.00	-131.00	133.04	134.56	186.71	9.41
7359.00	76.25	182.82	7123.40	220.39	-220.39	127.14	150.02	254.43	11.60
7419.00	84.85	182.89	7133.24	279.45	-279.45	124.19	156.04	305.80	14.34
7535.00	90.74	181.03	7137.71	395.24	-395.24	120.23	163.08	413.12	5.32
7628.00	90.17	179.58	7136.97	488.23	-488.23	119.74	166.22	502.70	1.67
7721.00	89.66	178.29	7137.11	581.21	-581.21	121.46	168.20	593.77	1.49
7814.00	89.77	177.79	7137.57	674.16	-674.16	124.64	169.53	685.58	0.55
7909.00	89.80	177.81	7137.93	769.09	-769.09	128.28	170.53	779.71	0.04
8004.00	89.30	177.36	7138.68	864.00	-864.00	132.29	171.29	874.07	0.72

MD	Inc	Azim	TVD	VS	+N/-S	+E/-W	Closure Direction	Closure Distance	DLS
ft	deg	deg	ft	ft	ft	ft	deg	ft	°/100ft
8099.00	91.14	177.35	7138.32	958.89	-958.89	136.68	171.89	968.58	1.94
8194.00	92.38	178.66	7135.40	1053.79	-1053.79	139.99	172.43	1063.04	1.90
8289.00	91.71	179.65	7132.00	1148.71	-1148.71	141.38	172.98	1157.38	1.26
8384.00	89.97	179.33	7130.61	1243.69	-1243.69	142.23	173.48	1251.80	1.87
8479.00	91.58	181.41	7129.33	1338.68	-1338.68	141.63	173.96	1346.15	2.77
8574.00	90.84	180.92	7127.33	1433.63	-1433.63	139.70	174.43	1440.42	0.93
8670.00	89.20	180.45	7127.30	1529.62	-1529.62	138.55	174.82	1535.89	1.78
8765.00	88.42	179.90	7129.27	1624.60	-1624.60	138.27	175.14	1630.47	1.00
8860.00	87.72	180.07	7132.48	1719.55	-1719.55	138.30	175.40	1725.10	0.77
8955.00	89.13	179.64	7135.09	1814.51	-1814.51	138.54	175.63	1819.79	1.55
9051.00	89.73	180.28	7136.05	1910.50	-1910.50	138.61	175.85	1915.52	0.92
9146.00	90.20	179.56	7136.10	2005.50	-2005.50	138.75	176.04	2010.30	0.91
9241.00	90.50	177.58	7135.52	2100.46	-2100.46	141.13	176.16	2105.20	2.11
9337.00	89.53	178.23	7135.49	2196.40	-2196.40	144.64	176.23	2201.16	1.22
9432.00	89.63	178.05	7136.19	2291.35	-2291.35	147.73	176.31	2296.10	0.22
9527.00	89.77	178.35	7136.69	2386.30	-2386.30	150.71	176.39	2391.05	0.35
9622.00	92.38	180.17	7134.91	2481.26	-2481.26	151.94	176.50	2485.91	3.35
9718.00	92.38	179.63	7130.92	2577.18	-2577.18	152.12	176.62	2581.66	0.56

MD	Inc	Azim	TVD	VS	+N/-S	+E/-W	Closure Direction	Closure Distance	DLS
ft	deg	deg	ft	ft	ft	ft	deg	ft	°/100ft
9813.00	91.61	181.21	7127.61	2672.11	-2672.11	151.42	176.76	2676.40	1.86
9908.00	90.24	181.37	7126.08	2767.07	-2767.07	149.28	176.91	2771.10	1.46
10003.00	90.34	181.81	7125.60	2862.04	-2862.04	146.65	177.07	2865.79	0.48
10098.00	88.96	182.46	7126.19	2956.97	-2956.97	143.10	177.23	2960.43	1.60
10194.00	88.12	182.95	7128.63	3052.83	-3052.83	138.57	177.40	3055.97	1.01
10289.00	89.56	181.44	7130.55	3147.73	-3147.73	134.93	177.55	3150.62	2.20
10384.00	88.32	179.42	7132.30	3242.71	-3242.71	134.21	177.63	3245.48	2.49
10479.00	89.66	180.51	7133.97	3337.69	-3337.69	134.27	177.70	3340.39	1.81
10575.00	90.91	180.51	7133.49	3433.68	-3433.68	133.42	177.77	3436.27	1.29
10670.00	89.66	180.21	7133.02	3528.68	-3528.68	132.83	177.84	3531.18	1.34
10765.00	90.60	179.81	7132.80	3623.68	-3623.68	132.81	177.90	3626.11	1.07
10860.00	89.43	178.31	7132.77	3718.66	-3718.66	134.37	177.93	3721.08	2.00
10956.00	88.49	178.10	7134.51	3814.59	-3814.59	137.37	177.94	3817.07	1.00
11051.00	88.93	178.04	7136.65	3909.52	-3909.52	140.58	177.94	3912.04	0.46
11146.00	90.00	177.20	7137.54	4004.43	-4004.43	144.53	177.93	4007.03	1.44
11242.00	90.13	177.61	7137.43	4100.33	-4100.33	148.88	177.92	4103.03	0.46
11337.00	88.06	174.08	7138.93	4195.05	-4195.05	155.76	177.87	4197.94	4.31
11432.00	88.62	170.99	7141.68	4289.19	-4289.19	168.09	177.76	4292.48	3.31

MD	Inc	Azim	TVD	VS	+N/-S	+E/-W	Closure Direction	Closure Distance	DLS
ft	deg	deg	ft	ft	ft	ft	deg	ft	°/100ft
11527.00	91.31	171.48	7141.74	4383.07	-4383.07	182.57	177.61	4386.87	2.87
11562.00	90.87	170.86	7141.07	4417.65	-4417.65	187.95	177.56	4421.65	2.16

MD	Inc	Azim	TVD	VS	+N/-S	+E/-W	Closure Direction	Closure Distance	DLS
ft	deg	deg	ft	ft	ft	ft	deg	ft	°/100ft

5" = 100' FEET MD