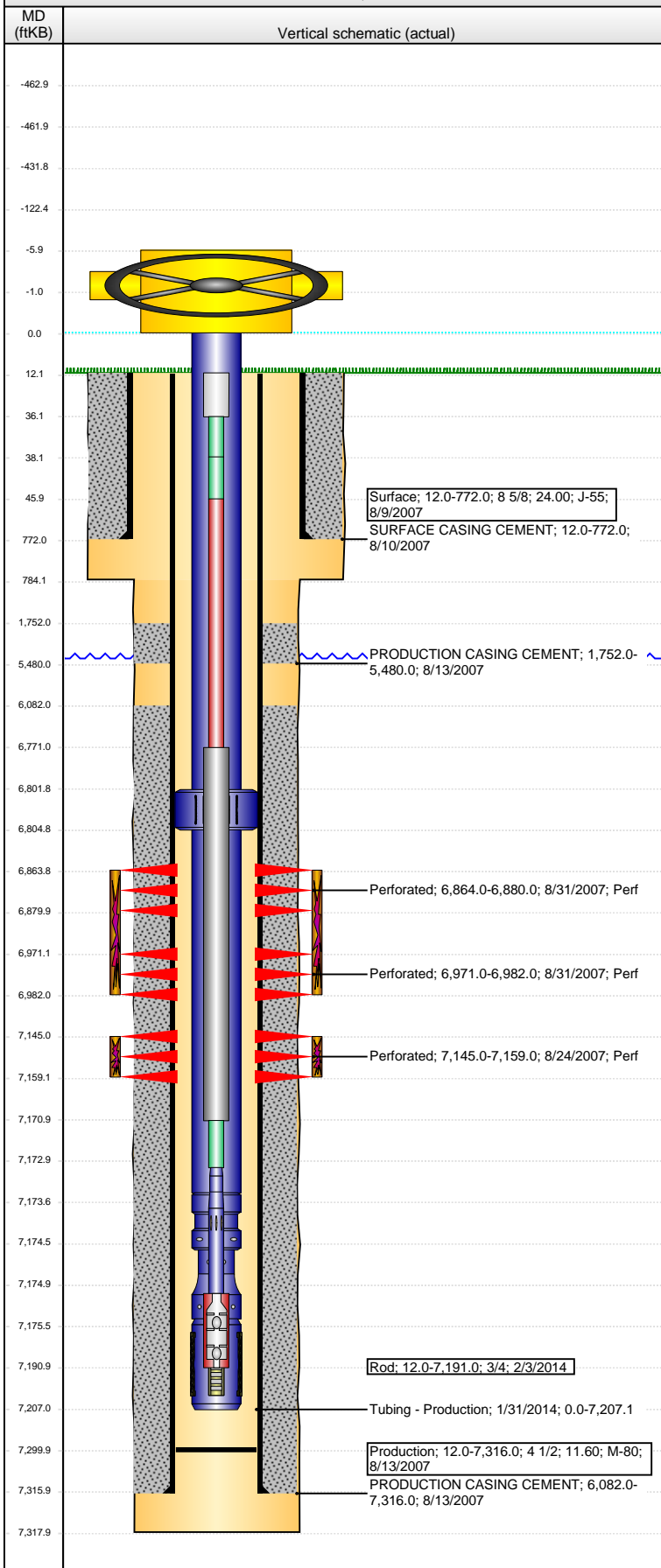


Well Name: KOHLHOFF USX AB17-16

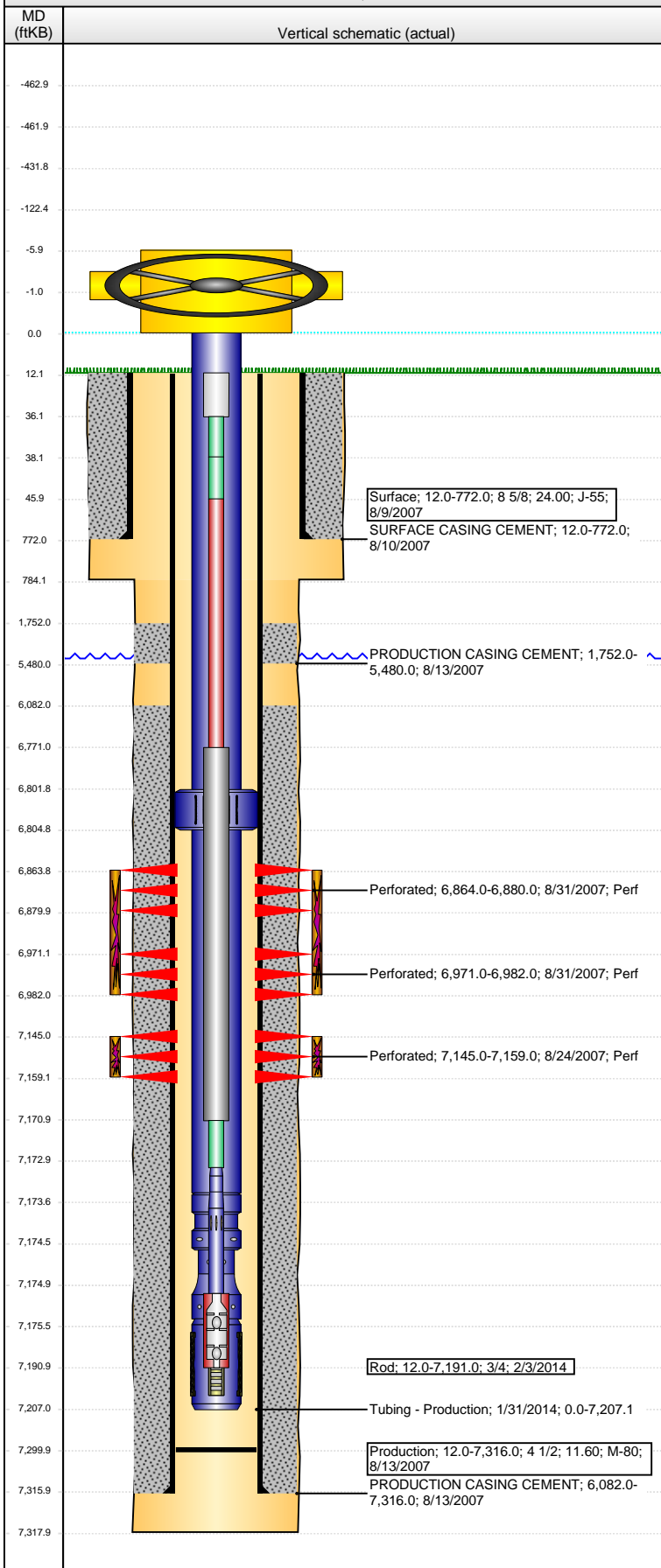
VERTICAL - ORIGINAL HOLE, 4/13/2015 2:40:17 PM



Well Header									
API 05-123-26090		Business Unit DJ BASIN		District 15		Well Config VERTICAL			
Original KB Elevation (ft) 4,924.00		KB - GL / MSL (ftKB) 12.00		Spud Date 8/9/2007		P & A Date			
Comment									
Directions To Well CR 53 AND CR 80, N 1/10, W 1/10 INTO									
Congressional Location									
Quarter 1	Quarter 2	Quarter 3 SE	Quarter 4 SE	Section 17	Township 7 N	Twnshp N...	Range 64	Rng E/W Dir W	
Bottom Hole Location									
North-South Distance (ft)		From N or S Line		East-West Distance (ft)			From E or W Line		
Plug Back Total Depths									
Date		Depth (ftKB)		Method		Com			
8/13/2007		7,300.0		TAG					
Wellbore Sections									
Section Des			Size (in)		Act Top, MD (ftKB)		Act Btm, MD (ftKB)		
SURFACE			12 1/4		12.0		784.0		
PRODUCTION			7 7/8		784.0		7,318.0		
Zone Statuses									
Zone Name		Status Date		Status		Fluid Type		Job	
CODELL		10/5/2007		PR				DRILLING/COMPLETI...	
NIOBRARA		10/5/2007		PR				DRILLING/COMPLETI...	
Casing Strings									
Surface, 772.0ftKB									
Casing Description Surface		Run Date 8/9/2007	OD (in) 8 5/8	Wt/Len (l... 24.00	Grade J-55	Top, MD (ft... 12.0	MD (ftKB) 772.0		
Production, 7,316.0ftKB									
Casing Description Production		Run Date 8/13/2007	OD (in) 4 1/2	Wt/Len (l... 11.60	Grade M-80	Top, MD (ft... 12.0	MD (ftKB) 7,316.0		
Cement									
Description SURFACE CASING CEMENT					Top Depth (ftKB) 12.0		Bottom Depth (ftKB) 772.0		
Description PRODUCTION CASING CEMENT					Top Depth (ftKB) 1,752.0		Bottom Depth (ftKB) 5,480.0		
Description PRODUCTION CASING CEMENT					Top Depth (ftKB) 6,082.0		Bottom Depth (ftKB) 7,316.0		
Tubing Strings									
Tubing Description Tubing - Production		Run Date 9/7/2007	String... 2 3/8	ID (in) 1.995	Wt (lb/ft) 4.70	Grade J-55	Len (ft) 7,123.00	Set De...	
Tubing Description Tubing - Production		Run Date 4/11/2011	String... 2 3/8	ID (in) 1.995	Wt (lb/ft) 4.70	Grade J-55	Len (ft) 6,830.97	Set De...	
Tubing Description Tubing - Production		Run Date 3/21/2013	String... 2 3/8	ID (in) 1.995	Wt (lb/ft) 4.60	Grade J-55	Len (ft) 6,172.00	Set De...	
Tubing Description Tubing - Production		Run Date 5/14/2013	String... 2 3/8	ID (in) 1.995	Wt (lb/ft) 4.70	Grade J-55	Len (ft) 7,207.09	Set De...	
Tubing Description Tubing - Production		Run Date 1/31/2014	String... 2 3/8	ID (in) 1.995	Wt (lb/ft) 4.70	Grade J-55	Len (ft) 7,207.09	Set De...	
Tubing Components									
Item Des		OD (in)	Wt (lb/ft)	Grade	Jts	Len (ft)	Btm (ftKB)	Btm (TVD) (ftKB)	
Tubing		2 3/8	4.70	J-55	220	6,801.91	6,801.9		
Anchor/catcher		4			1	3.00	6,804.9		
Tubing		2 3/8	4.70	J-55	12	368.48	7,173.4		
Pump Seating		2 3/8	1.10		1	1.20	7,174.6		
Nipple									
Cross Over		2 3/8			1	0.80	7,175.4		
Mud Anchor		2 3/8			1	31.70	7,207.1		
Rods & Pumps									
Rod Description Rod					Run Date 2/3/2014		Set Depth (ftKB) 7,191.0		
Comment									

Well Name: KOHLHOFF USX AB17-16

VERTICAL - ORIGINAL HOLE, 4/13/2015 2:40:20 PM



Item Description	OD Nominal (in)	Joints	Length (ft)
Polished Rod	1 1/4	1	24.00
Pony Rod	3/4	1	2.00
Pony Rod	3/4	1	8.00
Sucker Rod	3/4	269	6,725.00
Sinker Bar	1 1/4	16	400.00
Pony Rod	3/4	1	2.00
Shear Coupling	3/4	1	2.00
RHAC Pump - THD	1 1/4	1	16.00

Zone	Bnch/St g	Entered Shot Total	Top (ftKB)	Btm (ftKB)	Date
NIOBRARA, ORIGINAL HOLE		64	6,864.00	6,880.00	8/31/2007
NIOBRARA, ORIGINAL HOLE		44	6,971.00	6,982.00	8/31/2007
CODELL, ORIGINAL HOLE		56	7,145.00	7,159.00	8/24/2007

Date	Zone	Primary Job Type
8/31/2007	NIOBRARA, ORIGINAL HOLE	DRILLING/COMPLETION - ORIGINAL
Technical Result	Tech Result Details	Tech Result Note
Comment		

Date	Zone	Primary Job Type
8/31/2007	CODELL, ORIGINAL HOLE	DRILLING/COMPLETION - ORIGINAL
Technical Result	Tech Result Details	Tech Result Note
Comment		

Run Date	Des	OD (in)	Top (ftKB)	Btm (ftKB)

Date	Type	Top, MD (ftKB)	Btm, MD (ftKB)
8/13/2007	COMPENSATED DENSITY	3,000.0	7,298.0
8/13/2007	INDUCTION	784.0	7,318.0
8/23/2007	CBL/CCL/GR	5,700.0	7,272.0