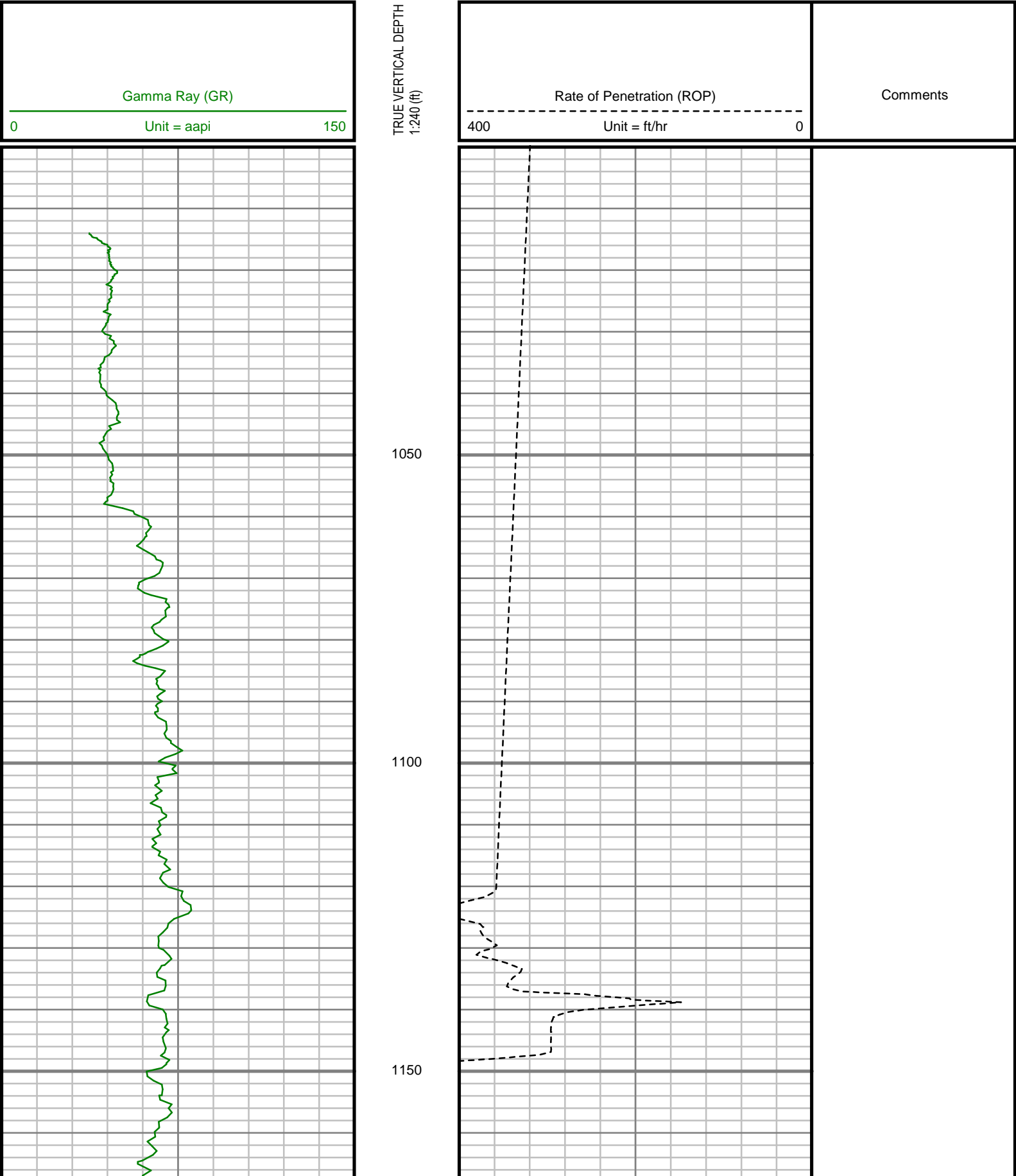


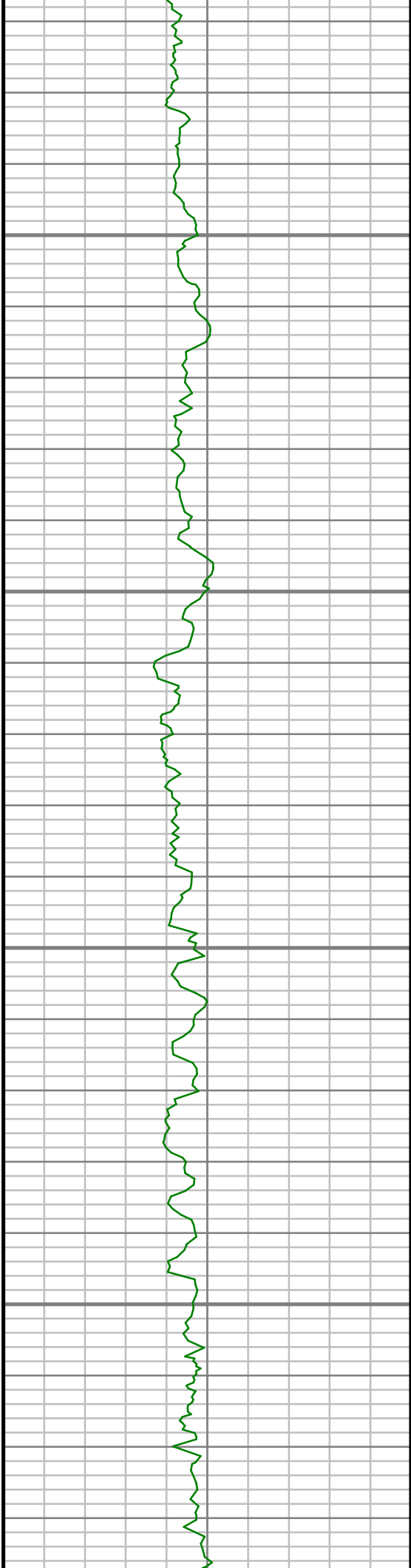
5" = 100' FEET TVD

COMPANY : ENCANA OIL AND GAS (U.S.A.) INC WELL : NEWNAM 2J-32H-C264 FIELD : WATTENBERG COUNTY : WELD STATE : COLORADO COUNTRY : U.S.A. UWI : 05-123-39779										COMPANY : ENCANA OIL AND GAS (U.S.A.) INC WELL : NEWNAM 2J-32H-C264 FIELD : WATTENBERG COUNTY : WELD STATE : COLORADO COUNTRY : U.S.A. UWI : 05-123-39779																			
DEPTH REF. : RKB REF. HEIGHT : 13.000 ft GROUND LEVEL : 4955.000 ft										WELL LOCATION LAT:40°6'5.278"N LONG:104°34'42.193"W N:1281148.11 ft E:3257804.41 ft SEC:32 TWP:2N RANGE:64W										OTHER SERVICES DIRECTIONAL ROP									
BOREHOLE RECORD										DEVIATION RECORD																			
HOLE SIZE in		FROM ft		TO ft		INCLINATION deg		FROM ft		TO ft																			
12.25		0		1078		0 - 11		0		1078																			
8.75		1078		7425		11 - 80		1078		7425																			
6.125		7425		11517		80 - 91		7425		11517																			
CASING RECORD																													
CASING SIZE in		FROM ft		TO ft																									
9.625		0		1065																									
7		0		7409																									
												DRILLING CO. : ENSIGN RIG: 124 LMD UNIT NO. : C70-EM4#8DISTRICT : CASPER SPUD DATE : 01/20/2015 LMD START DATE : 01/23/2015 LMD END DATE : 01/30/2015																	
												DEPTH : 5000 ft DEPTH : 11517 ft TOTAL DEPTH : 11517 ft																	

All interpretations are opinions based on inferences from electrical or other measurements and we cannot, and do not guarantee the accuracy or correctness of any interpretations, and we shall not, except in the case of gross or willful negligence on our part, be liable or responsible for any loss, costs, damages or expenses incurred or sustained by anyone resulting from any interpretation made by any of our officers, agents or employees. These interpretations are also subject to our general terms and conditions as set out in our current price schedule.

ENCANA OIL AND GAS (U.S.A.) INC
NEWNAM 2J-32H-C264
WATTENBERG FIELD
WELD COUNTY, COLORADO
05-123-39779



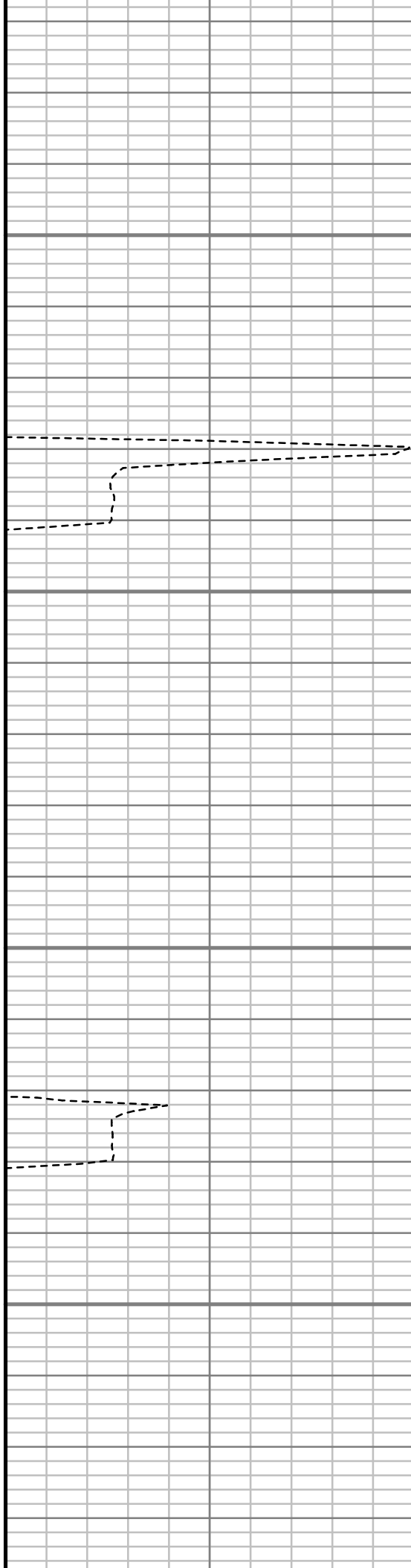


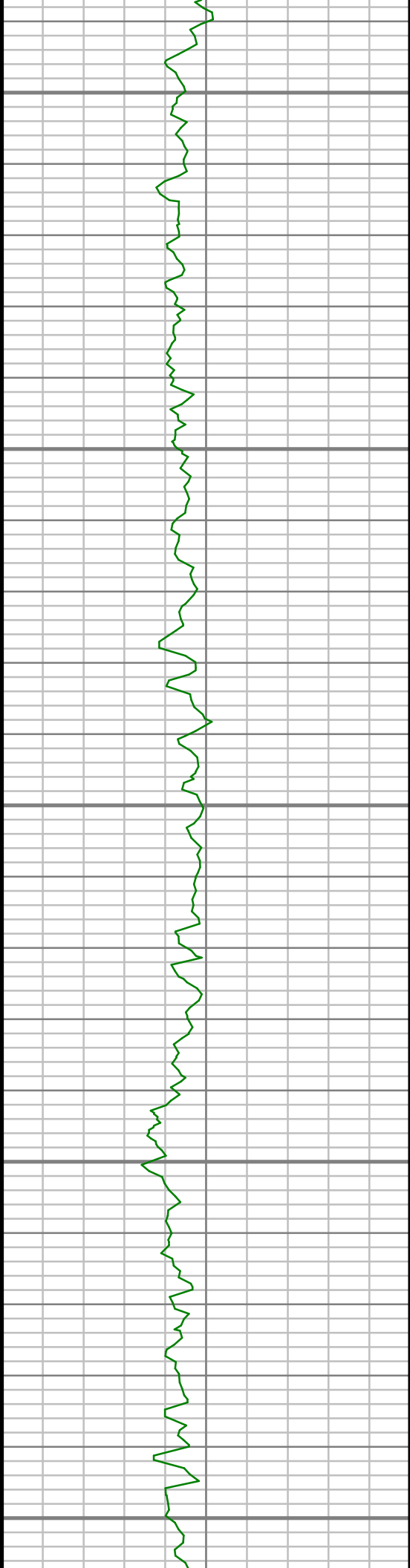
1200

1250

1300

1350





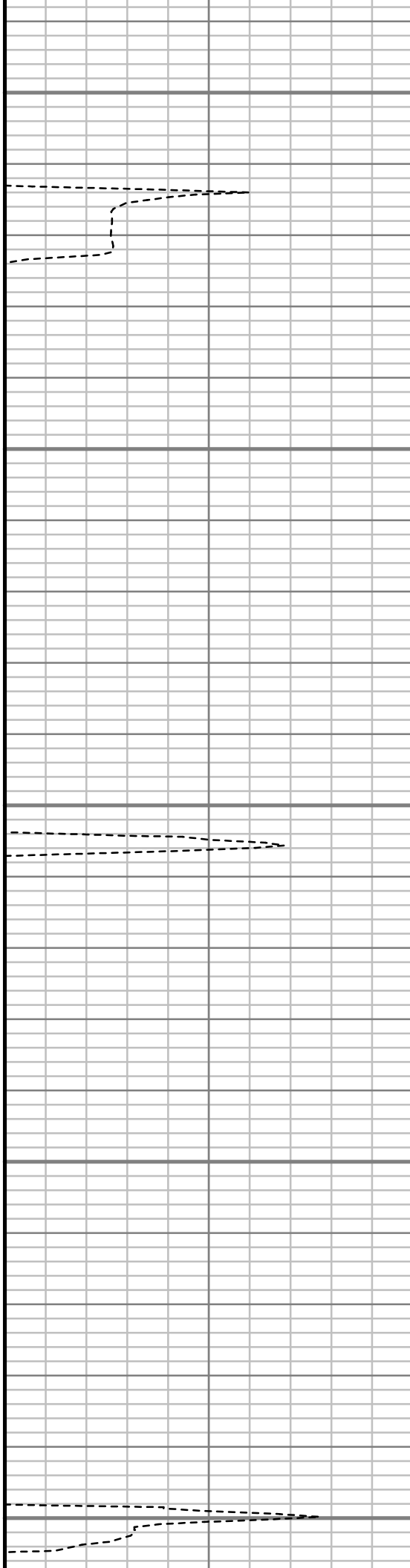
1400

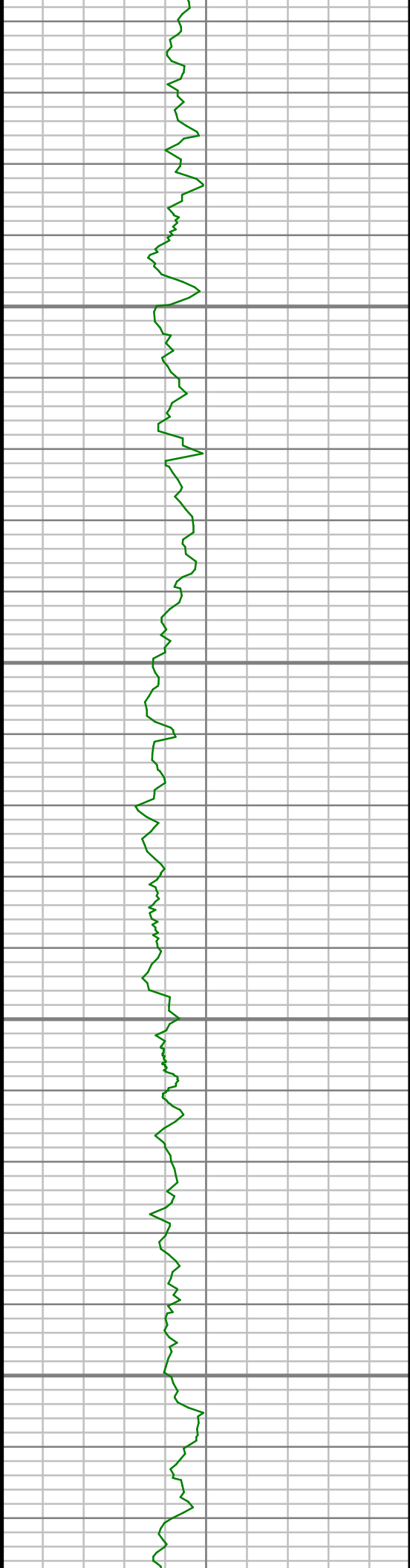
1450

1500

1550

1600



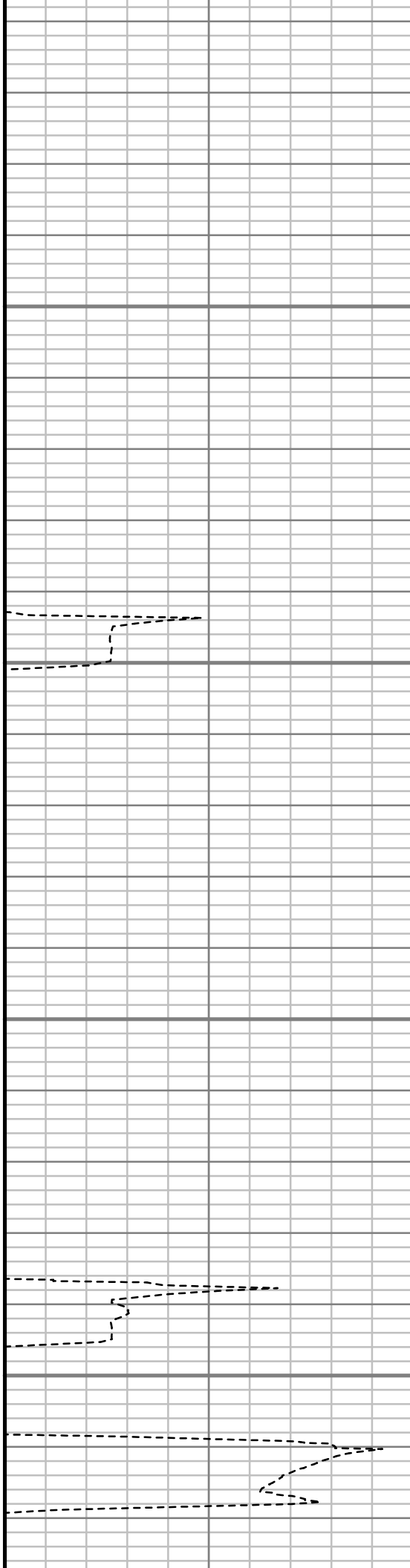


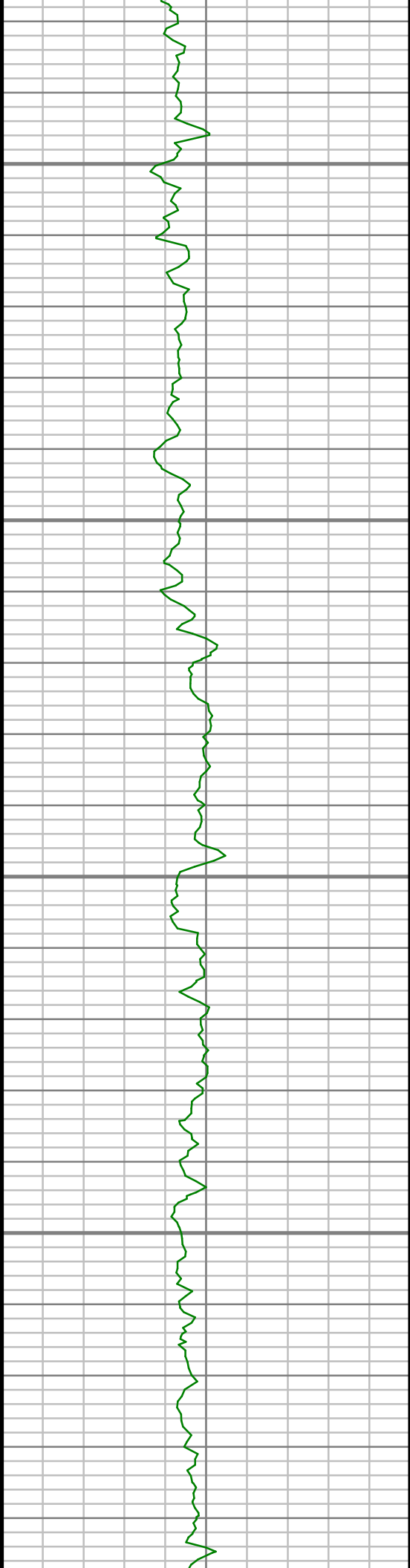
1650

1700

1750

1800



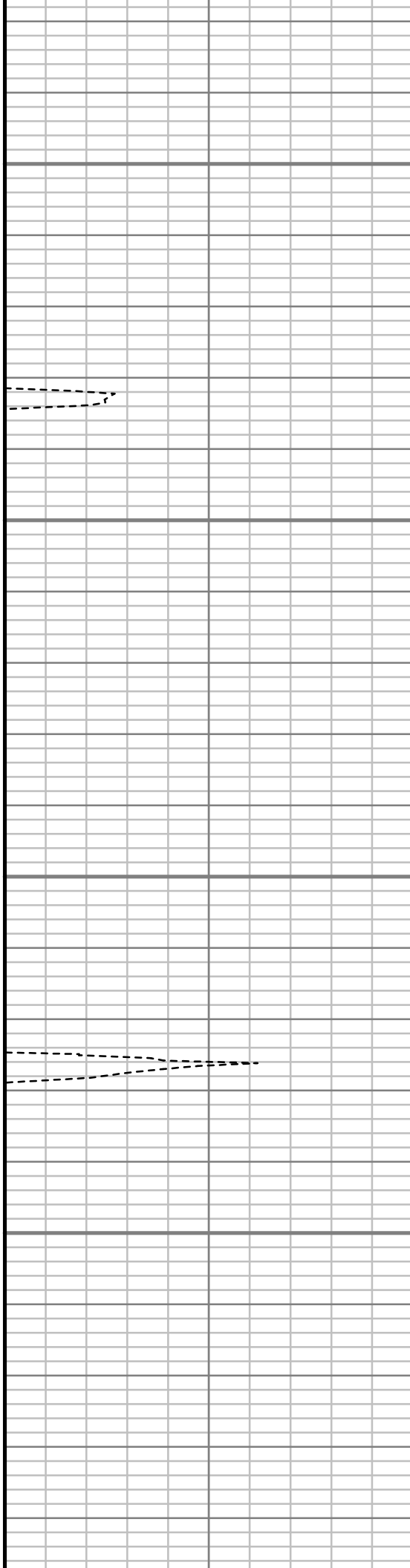


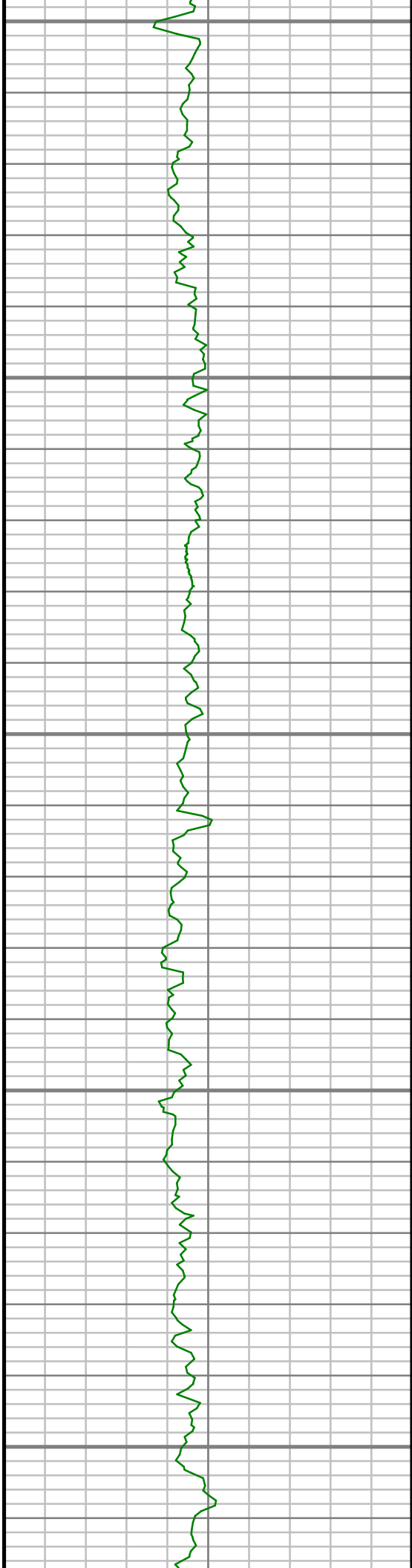
1850

1900

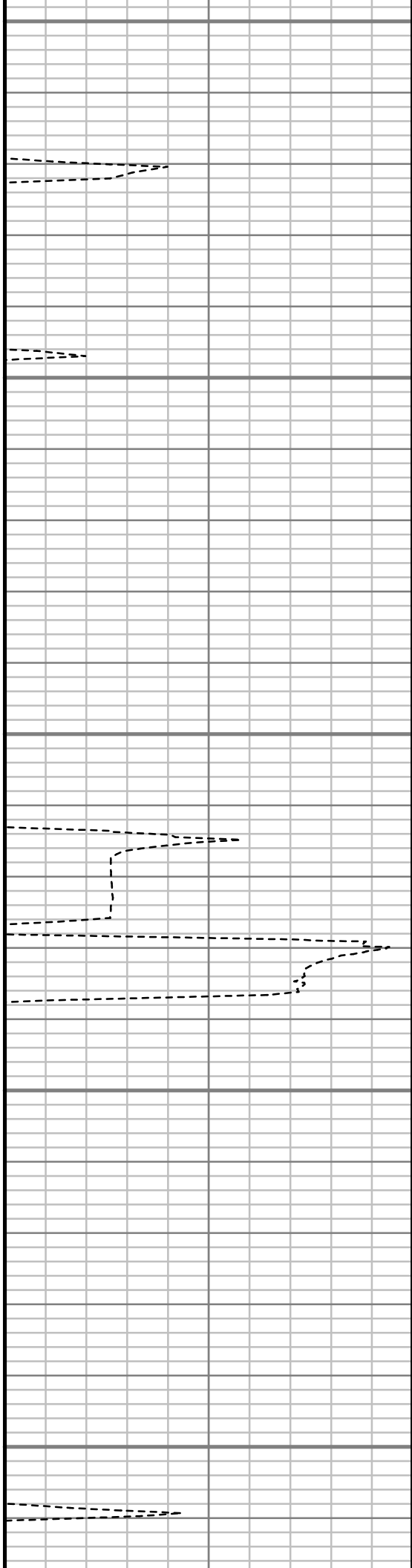
1950

2000





2050

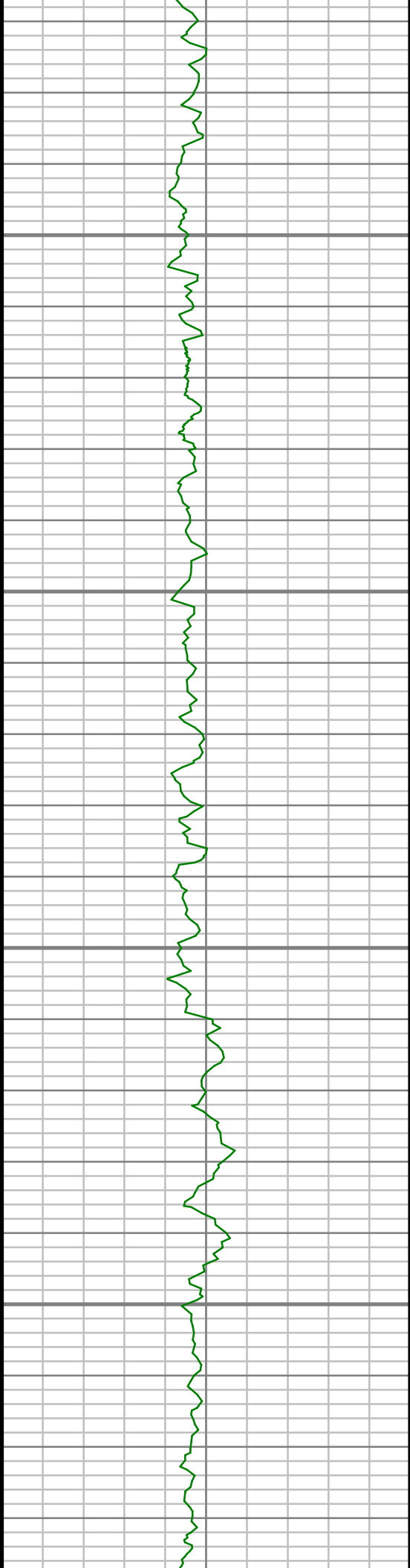


2100

2150

2200

2250

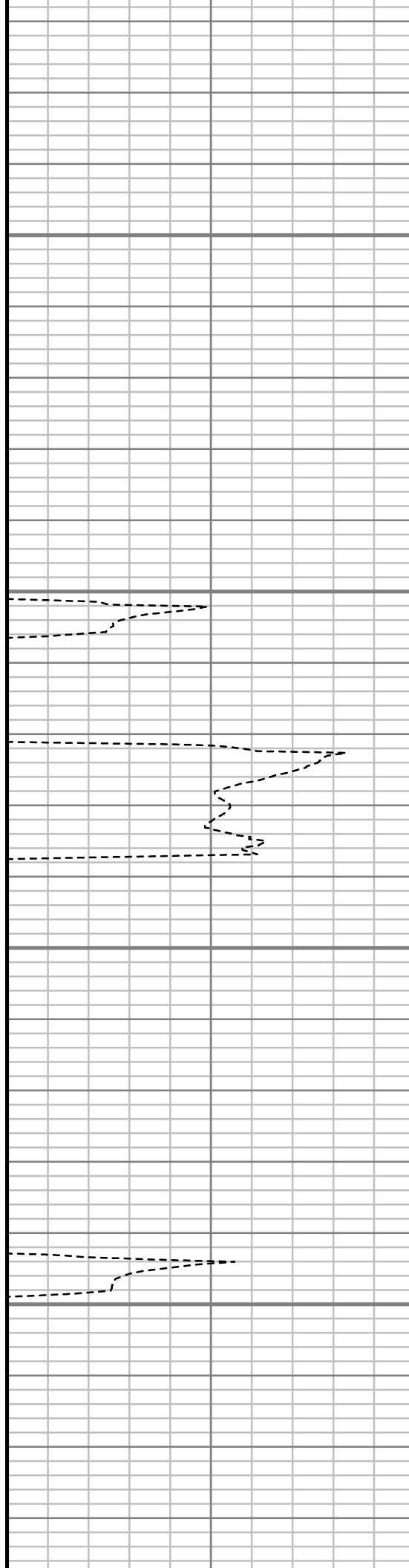


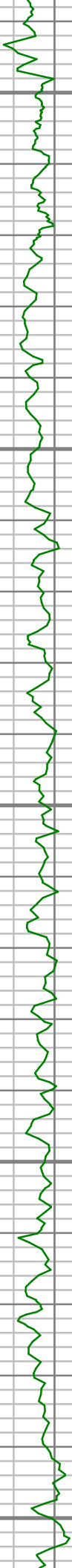
2300

2350

2400

2450





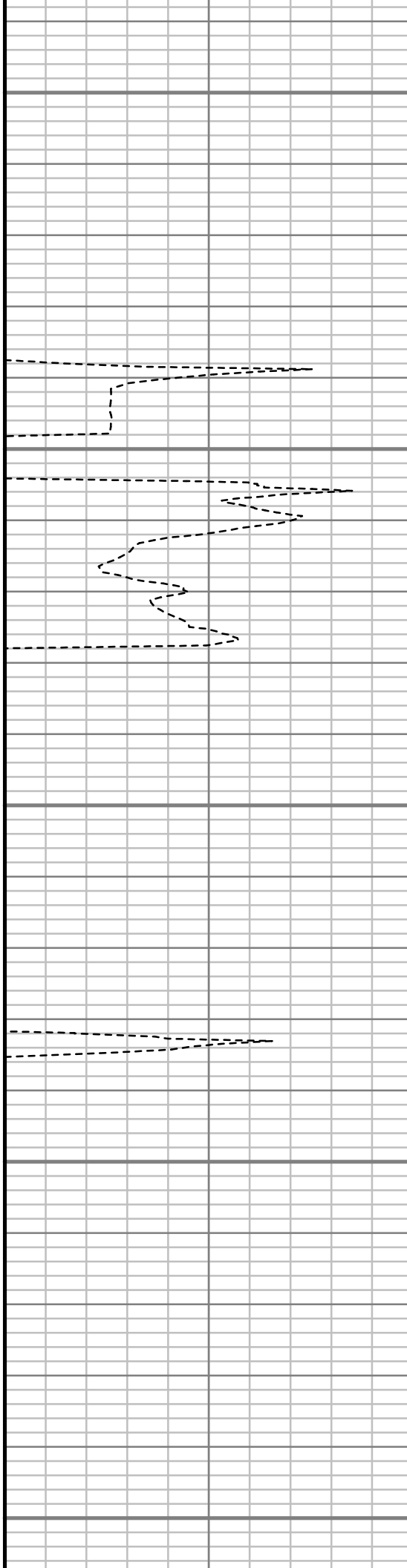
2500

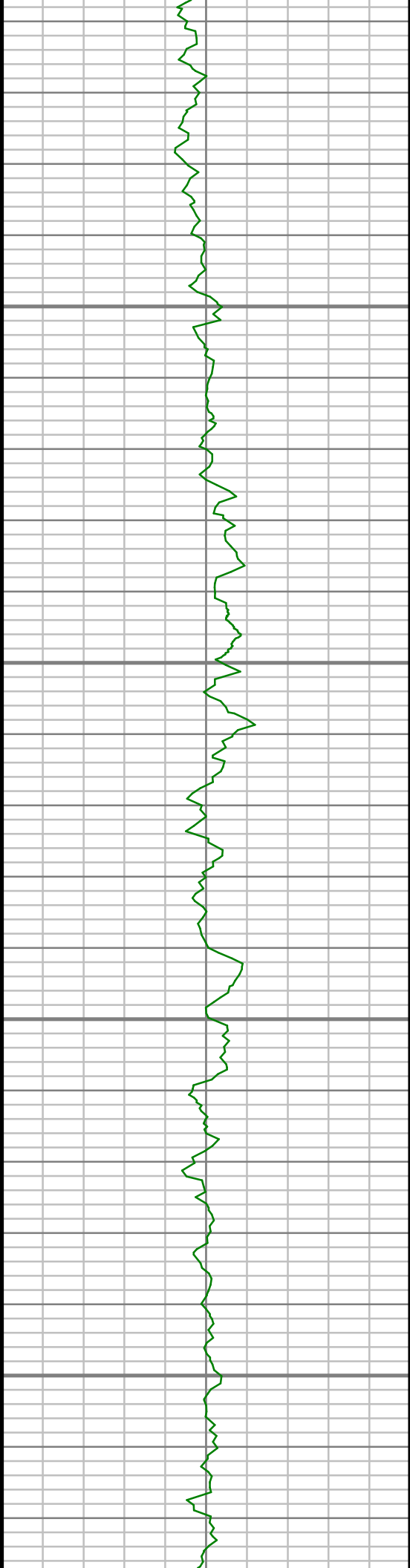
2550

2600

2650

2700



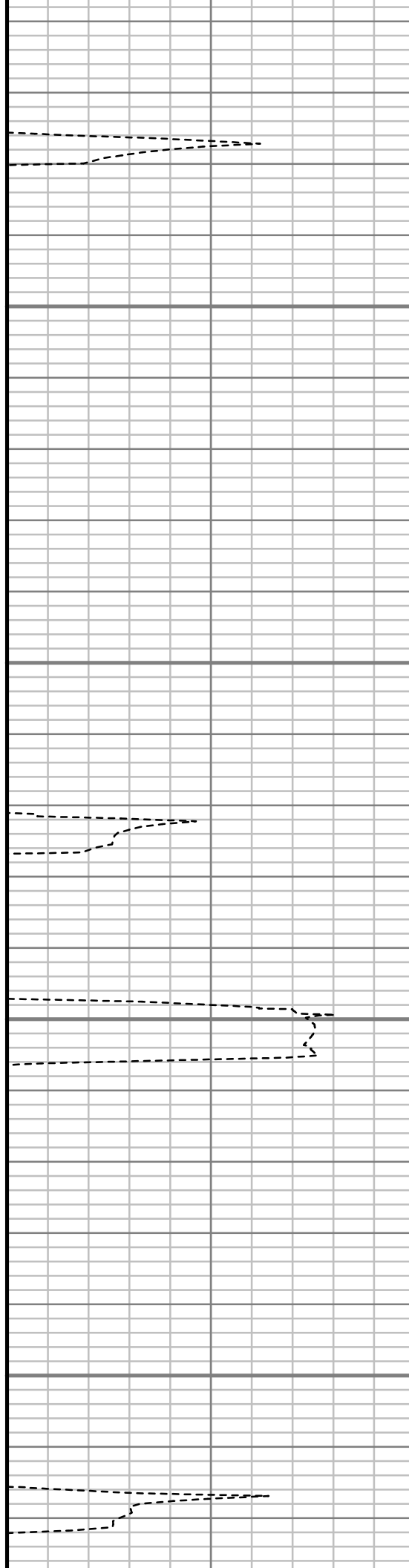


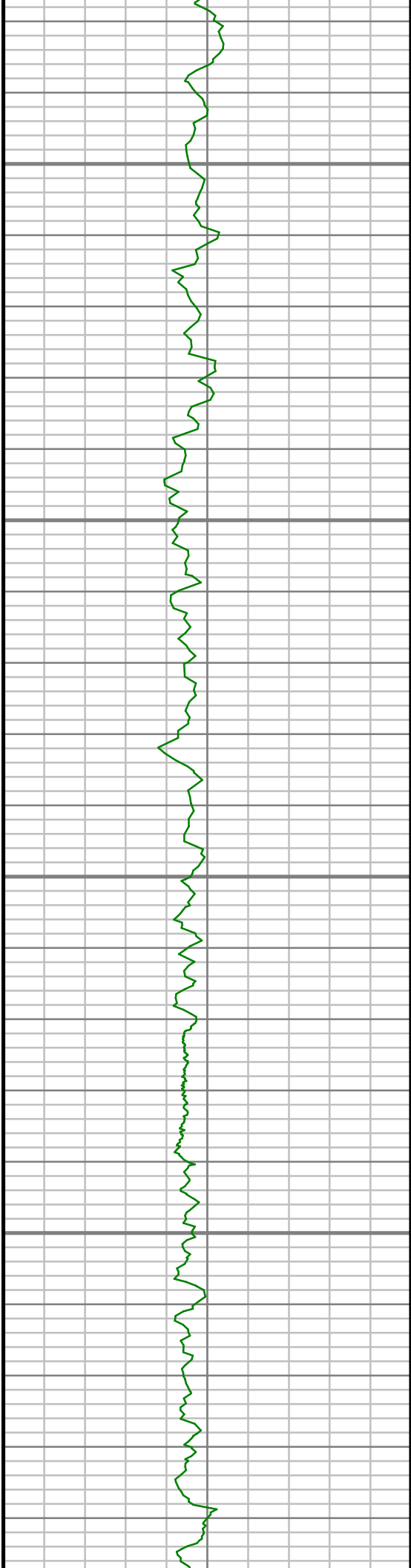
2750

2800

2850

2900





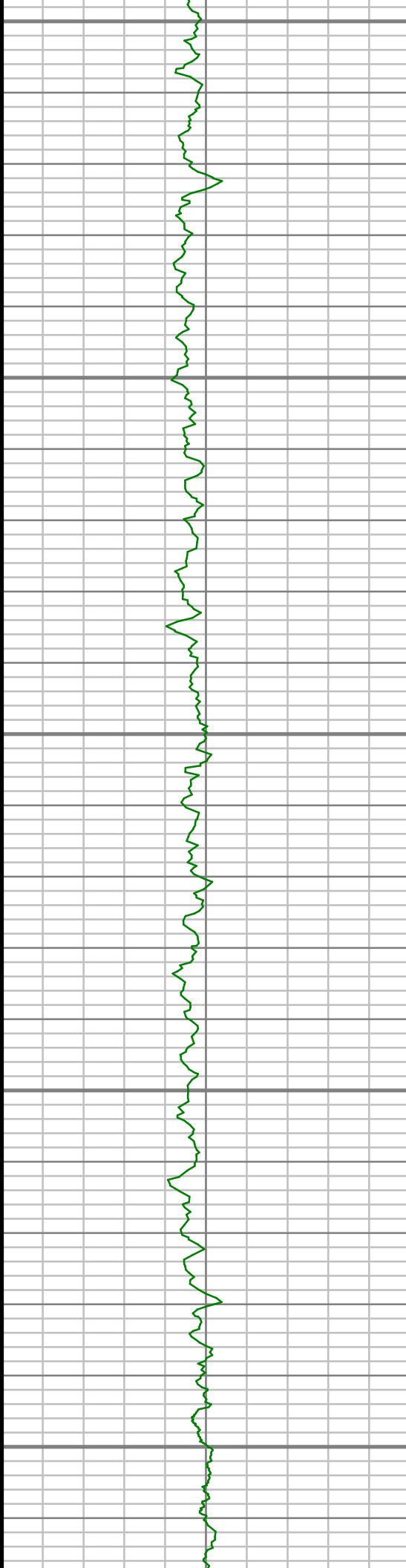
2950

3000

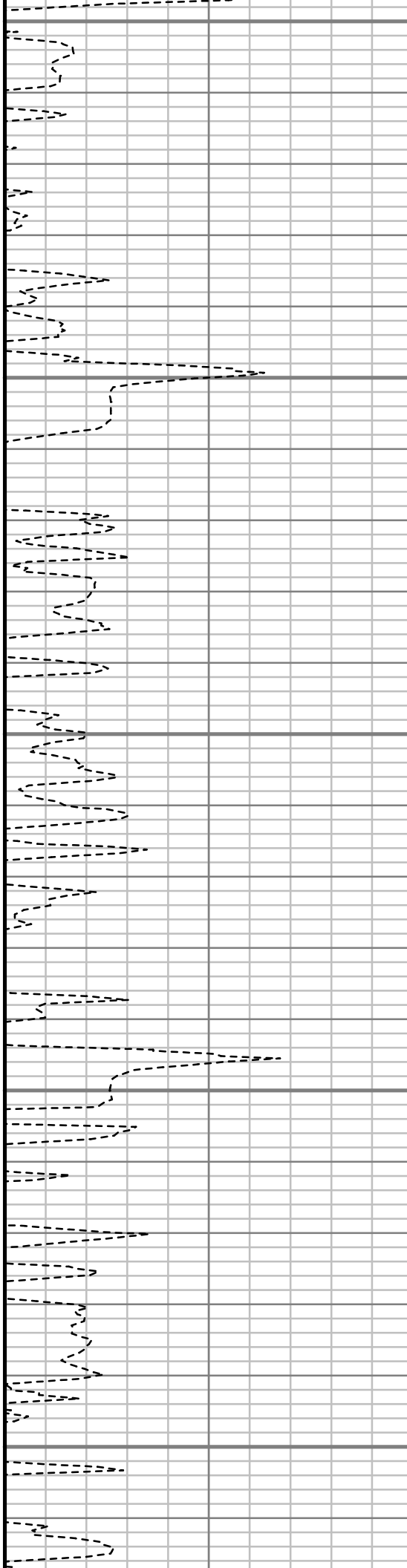
3050

3100





3150

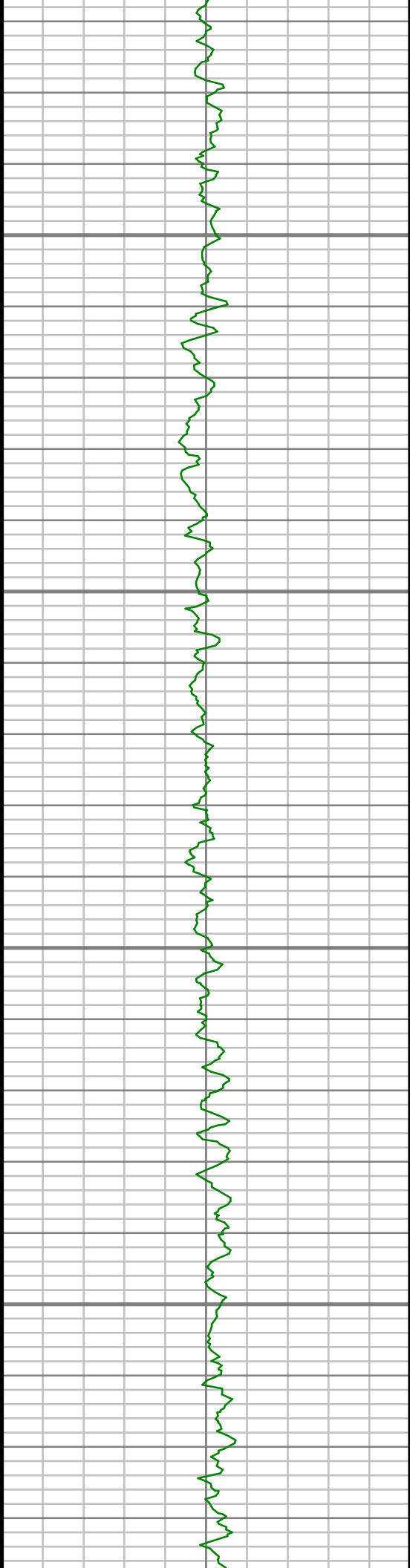


3200

3250

3300

3350

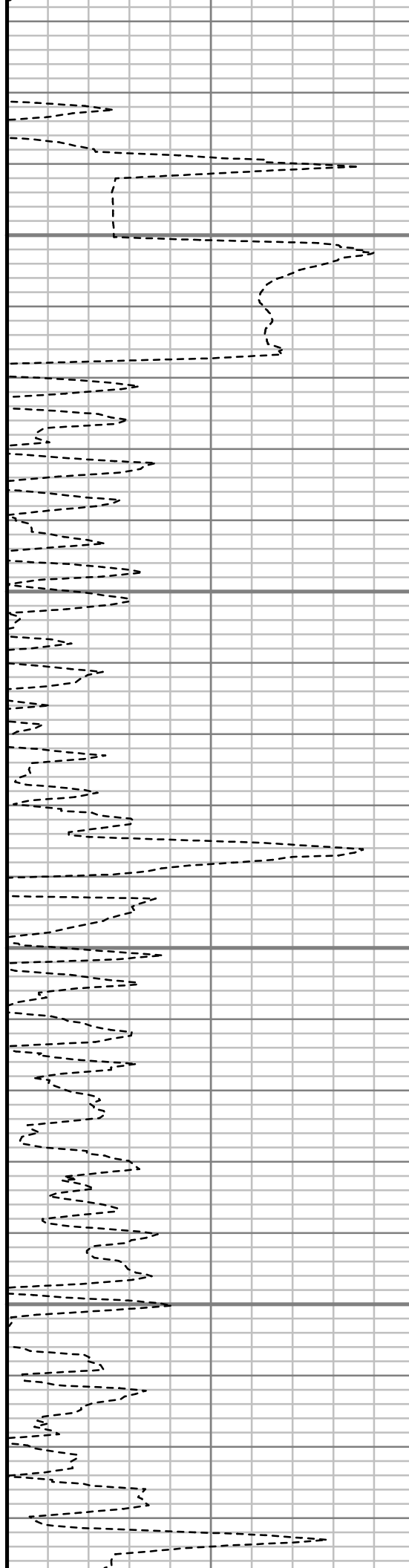


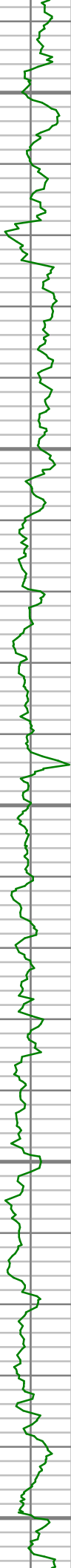
3400

3450

3500

3550





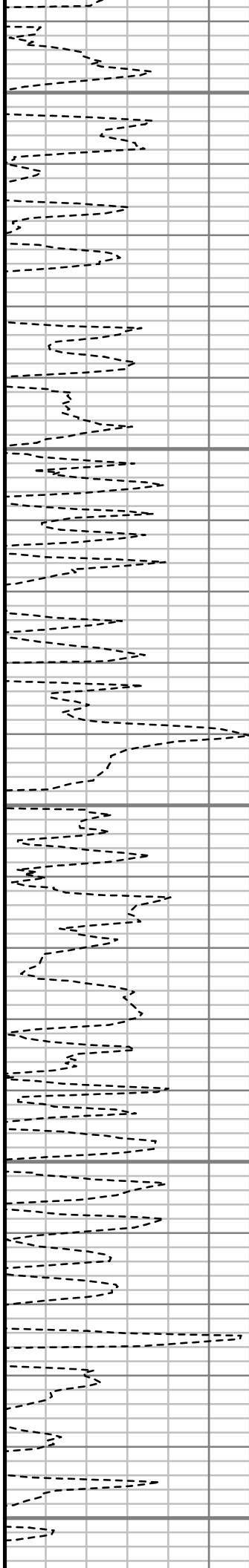
3600

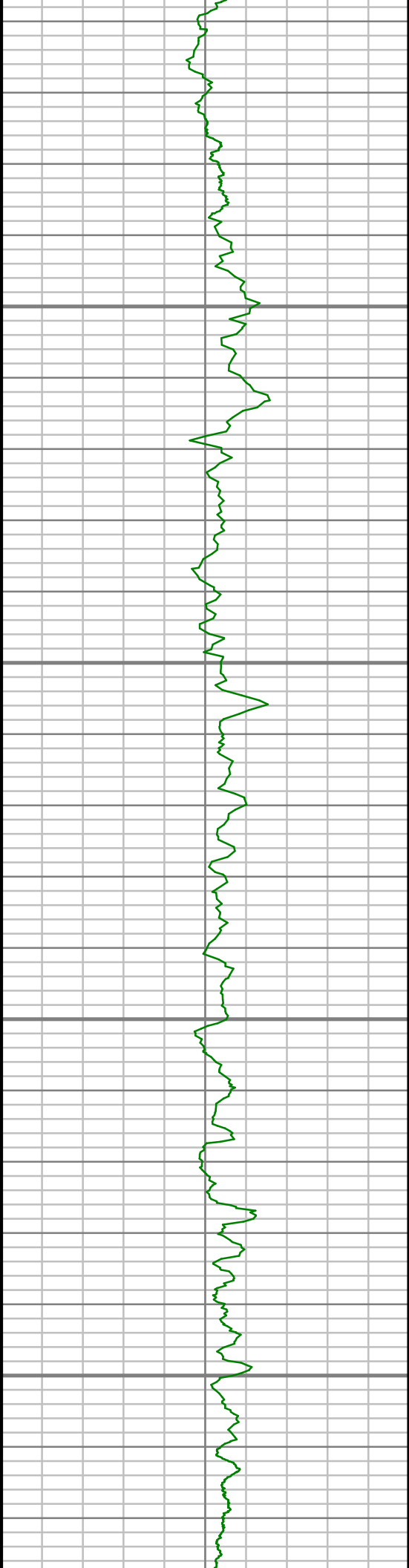
3650

3700

3750

3800



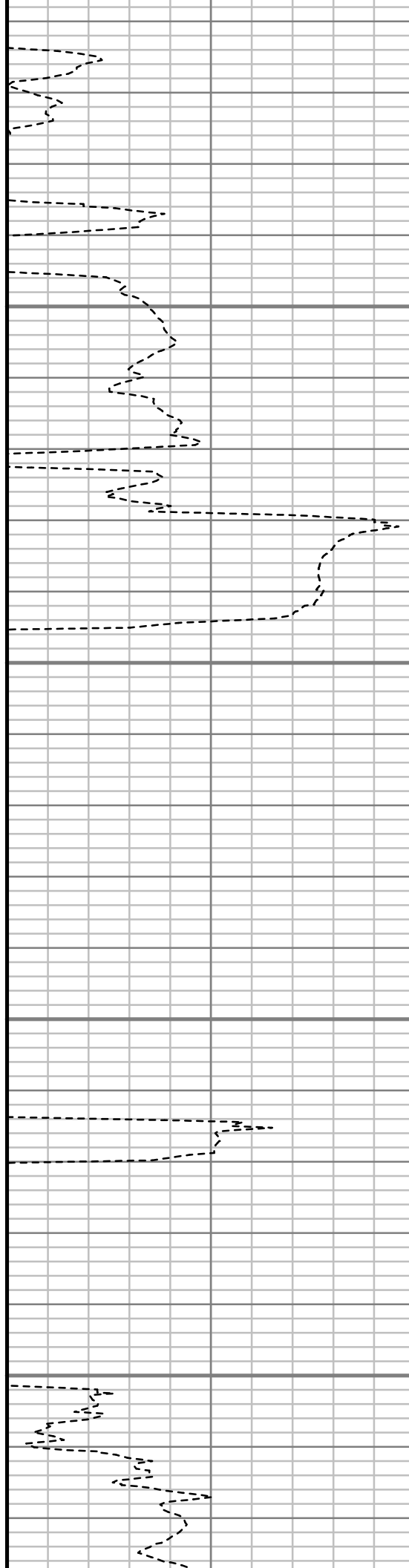


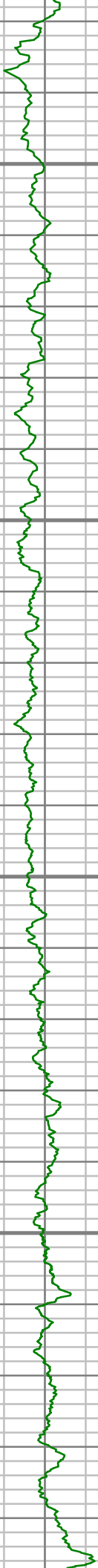
3850

3900

3950

4000



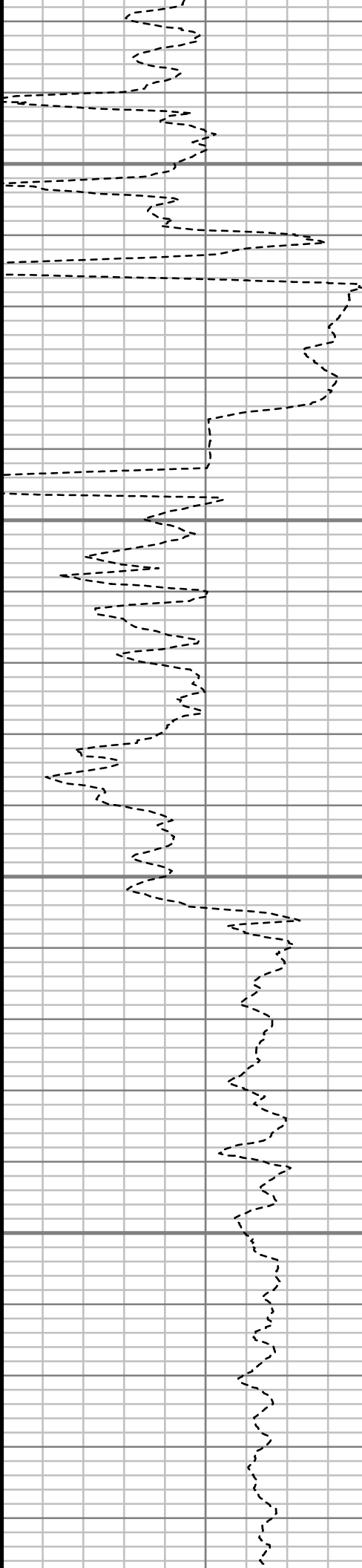


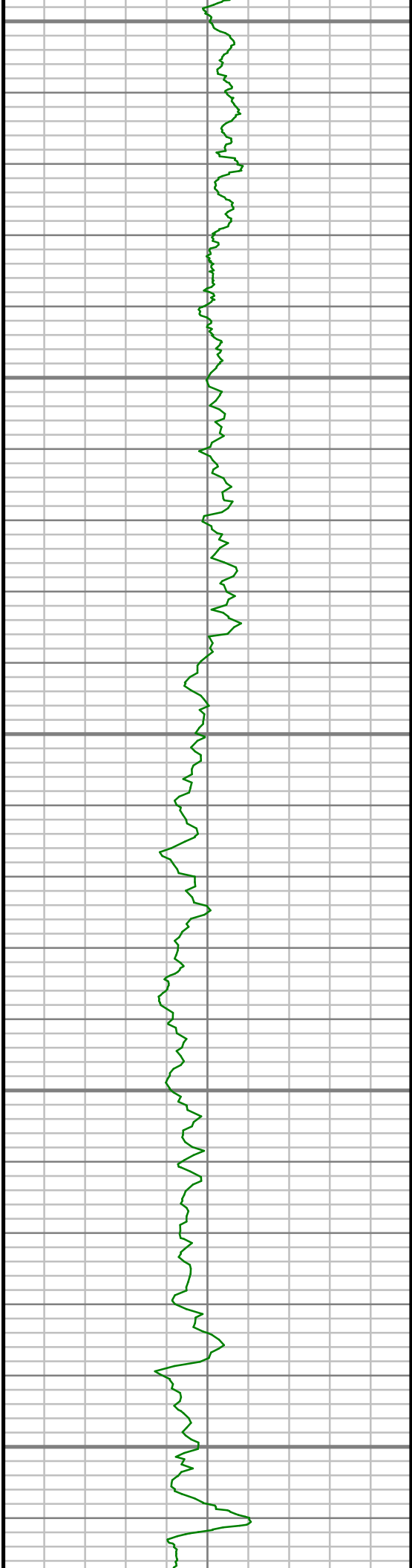
4050

4100

4150

4200





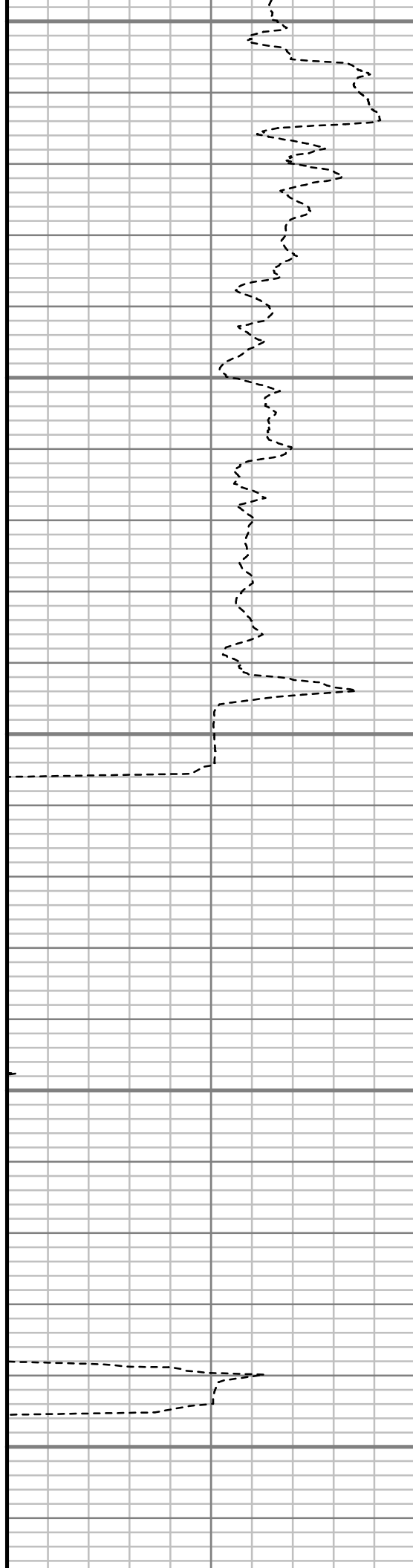
4250

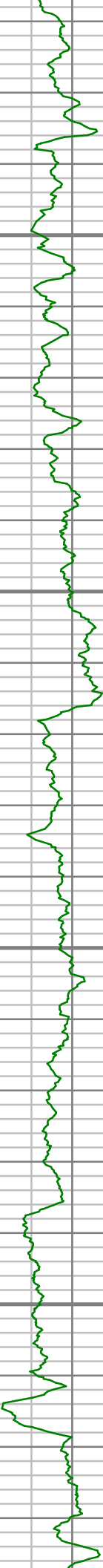
4300

4350

4400

4450



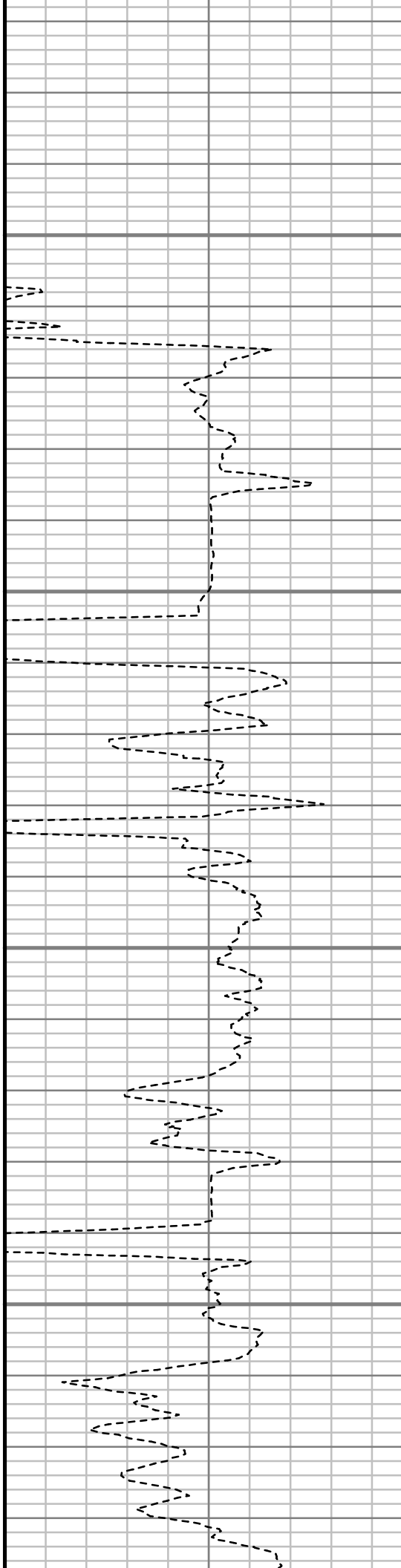


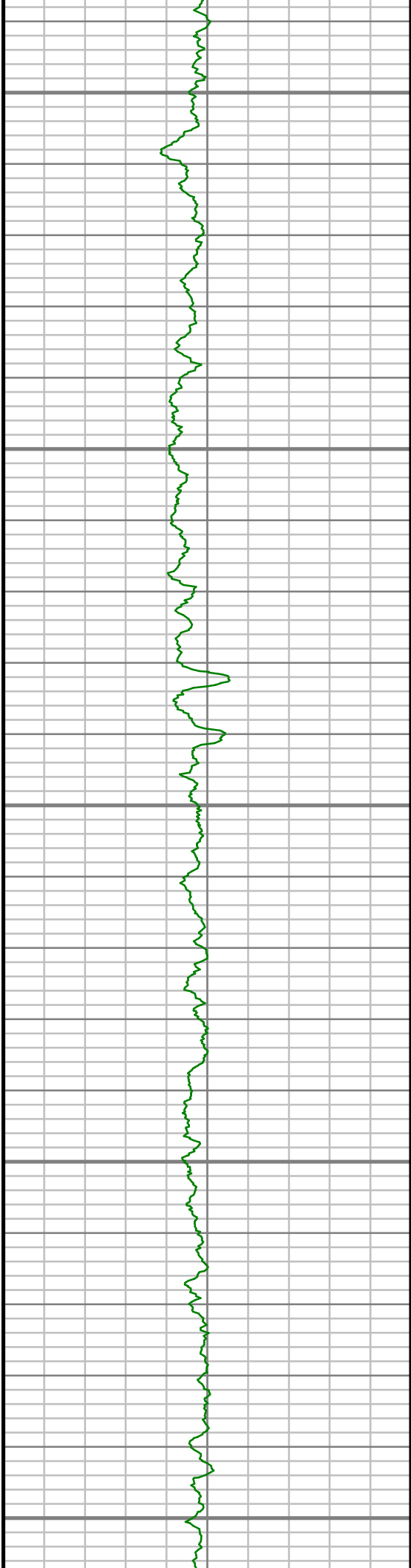
4500

4550

4600

4650





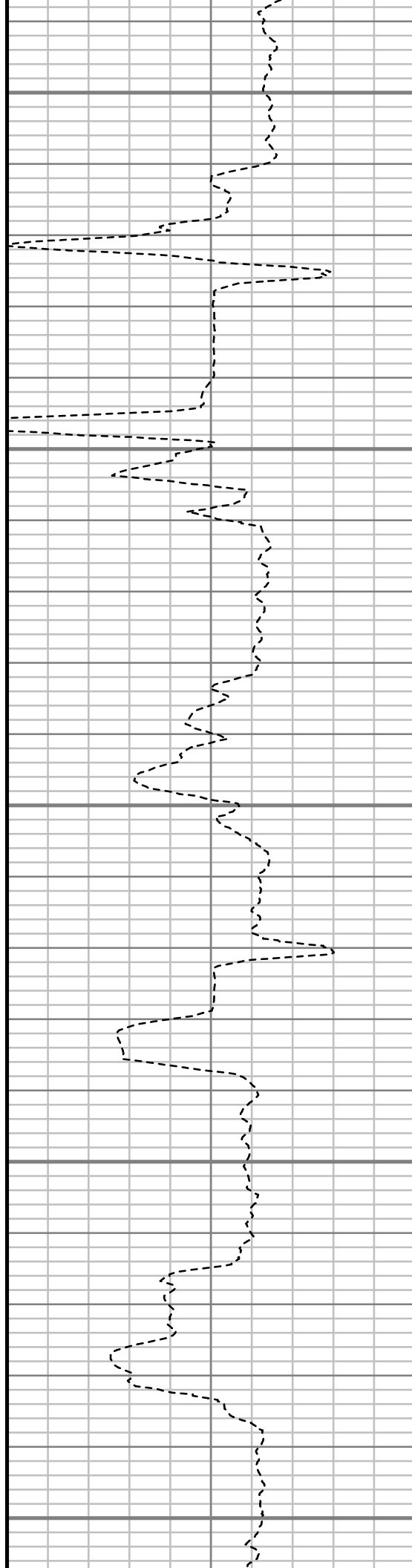
4700

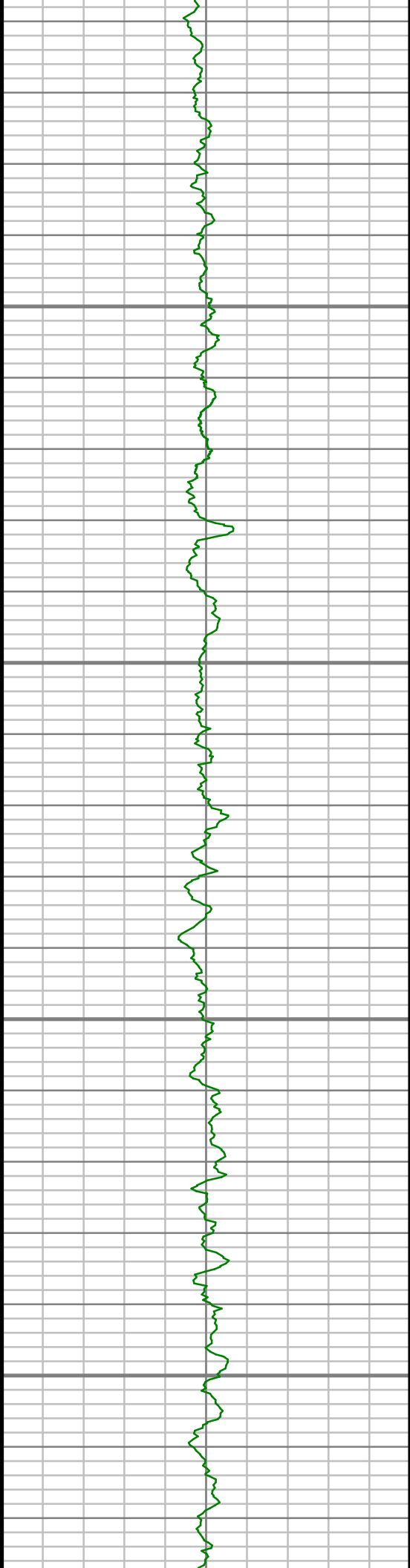
4750

4800

4850

4900



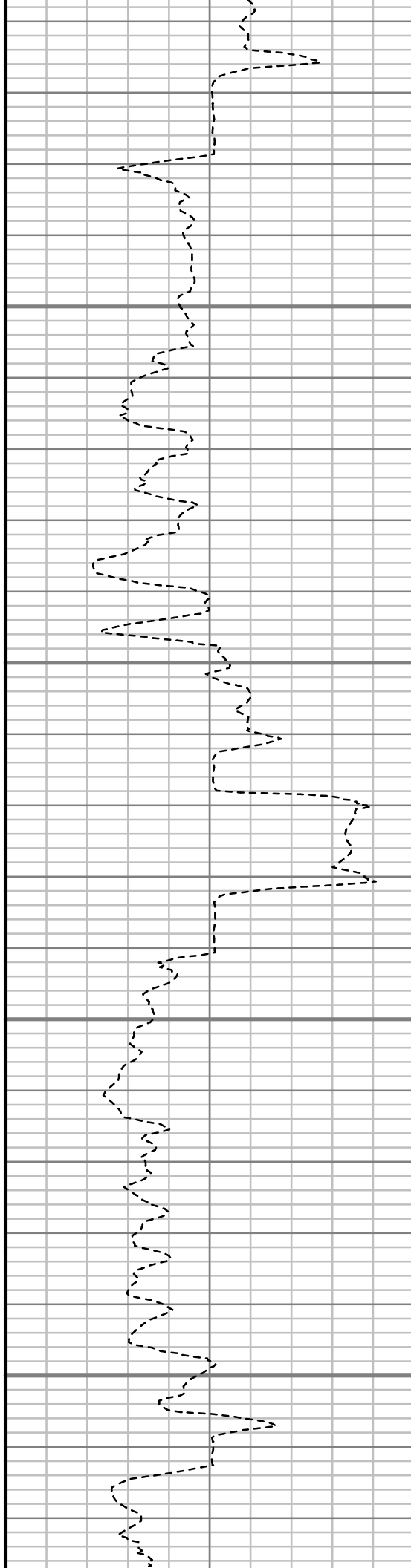


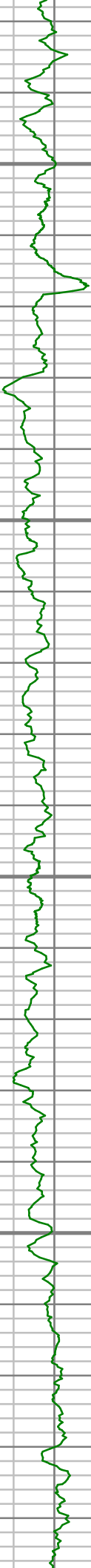
4950

5000

5050

5100



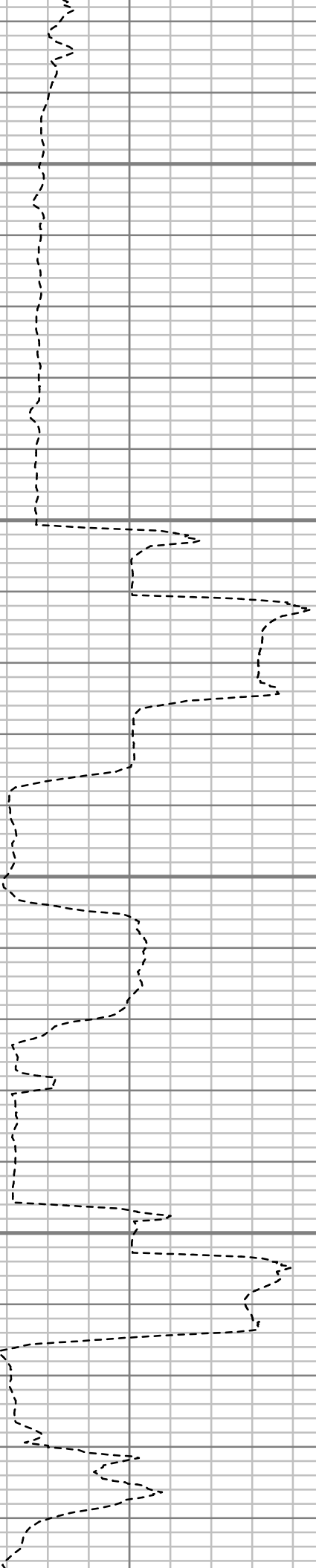


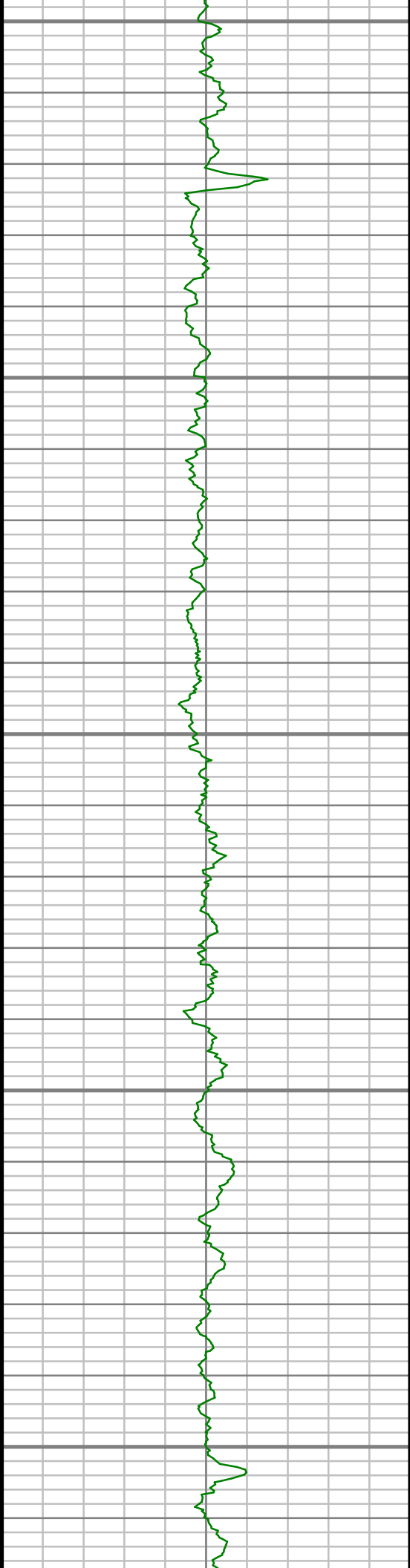
5150

5200

5250

5300





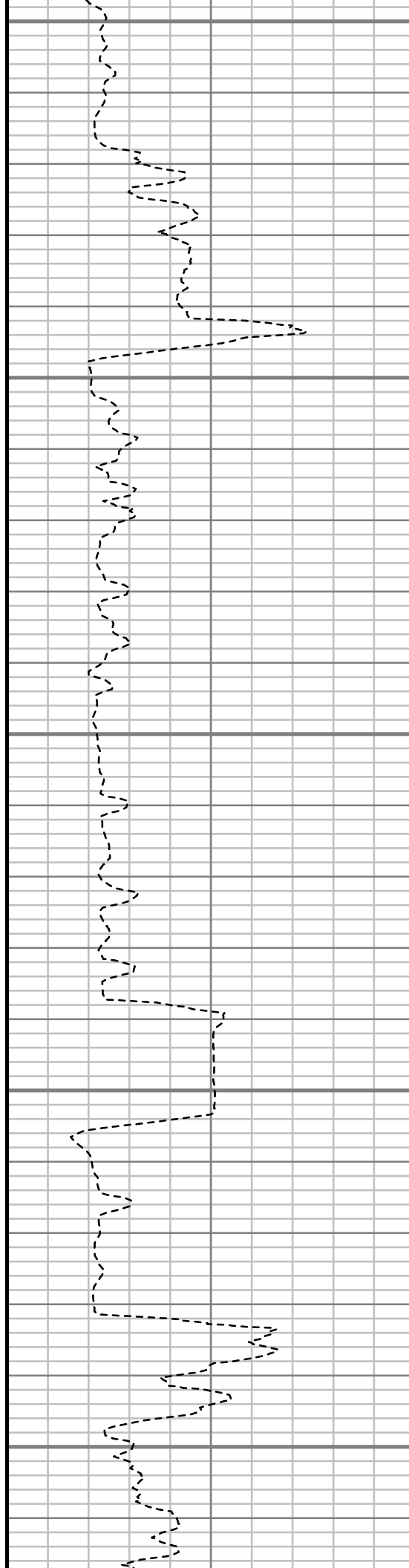
5350

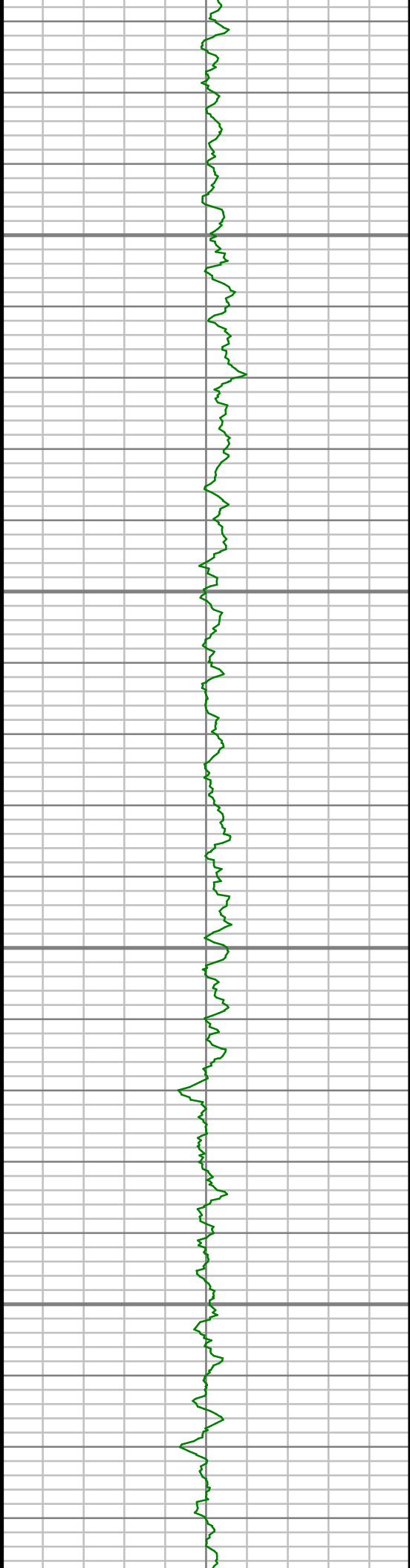
5400

5450

5500

5550



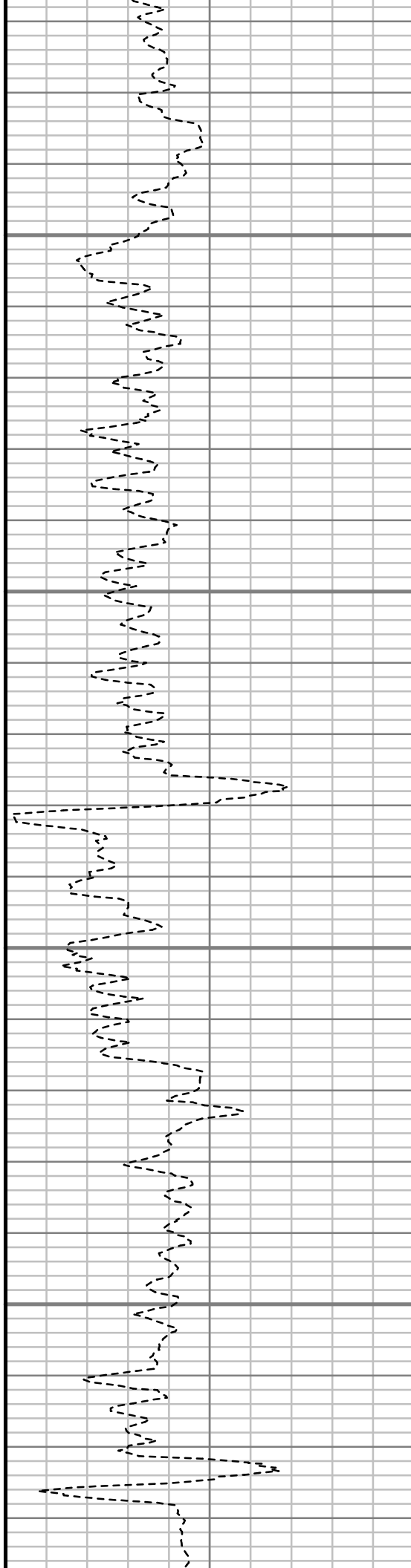


5600

5650

5700

5750





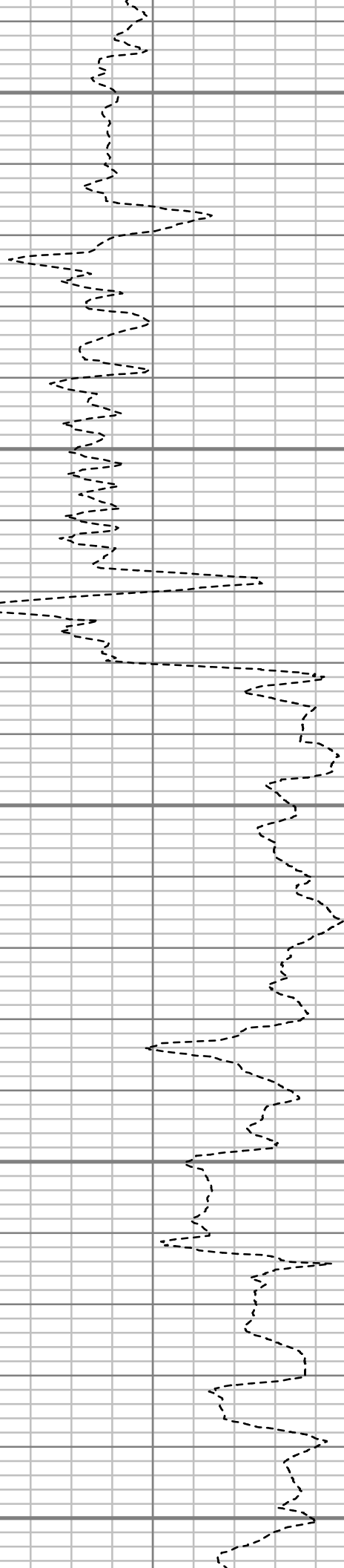
5800

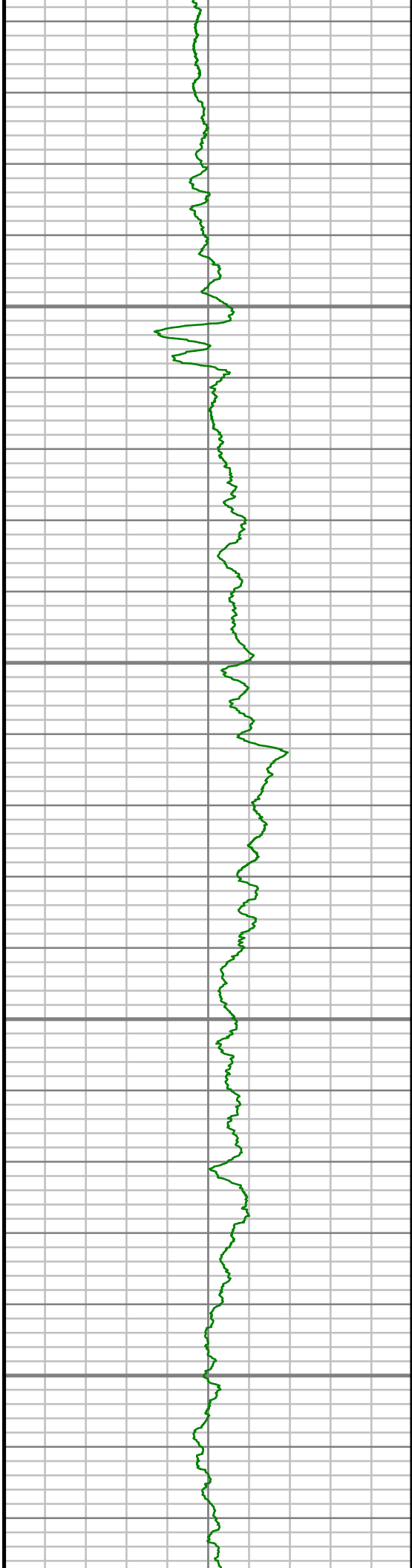
5850

5900

5950

6000



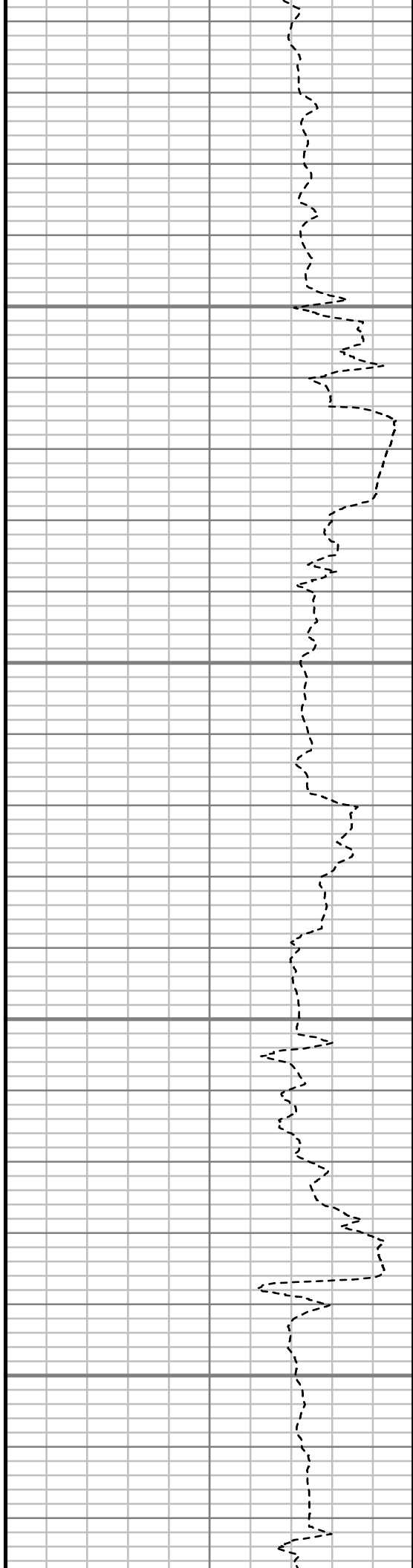


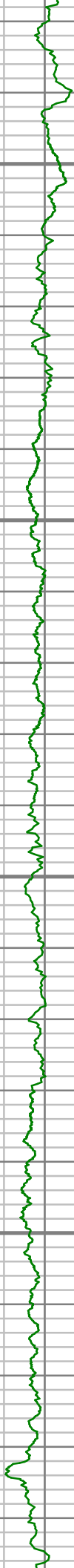
6050

6100

6150

6200





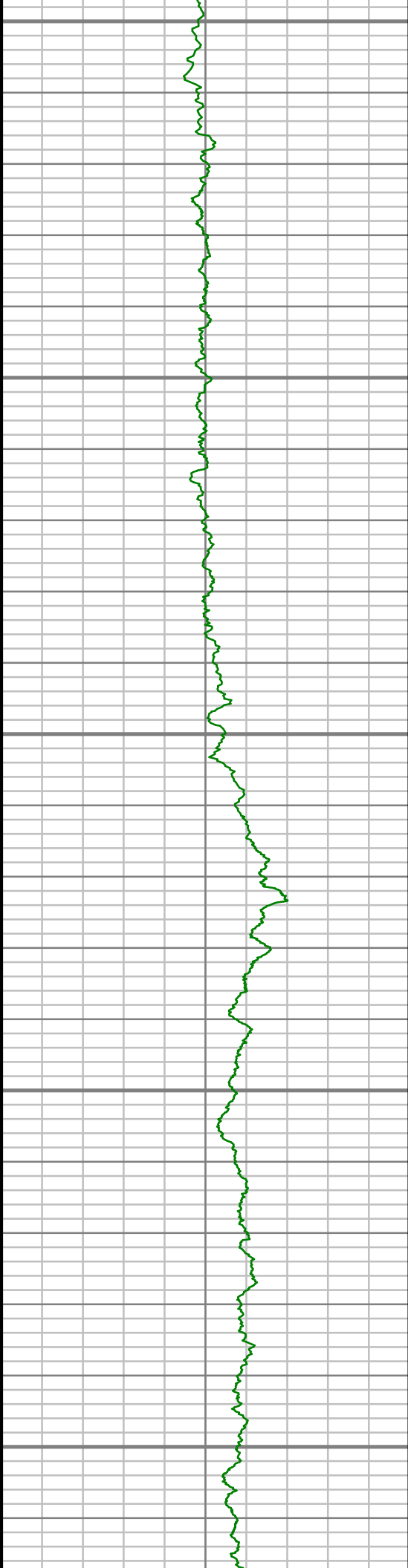
6250

6300

6350

6400





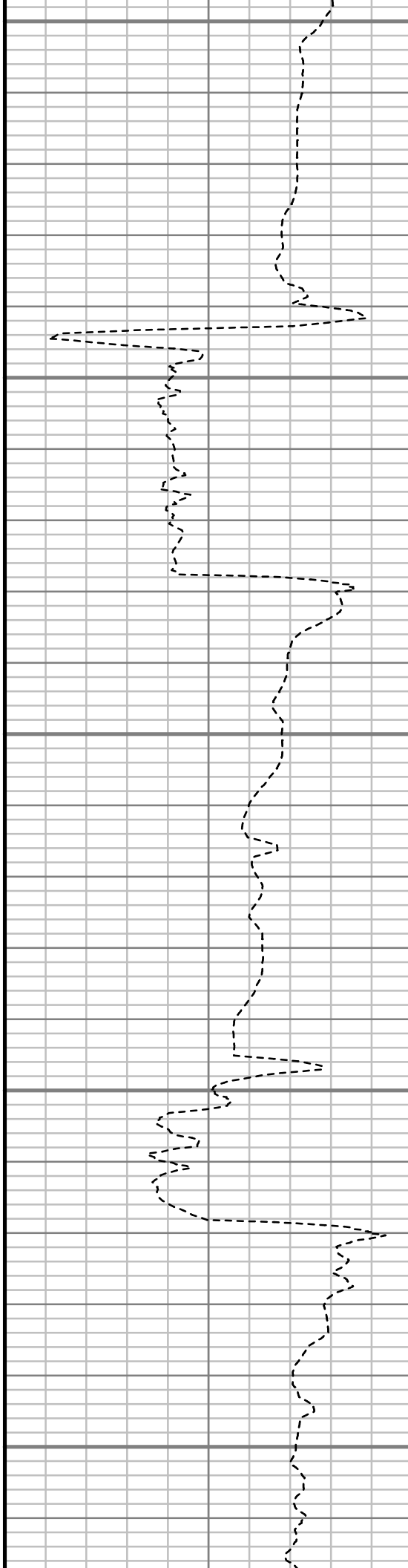
6450

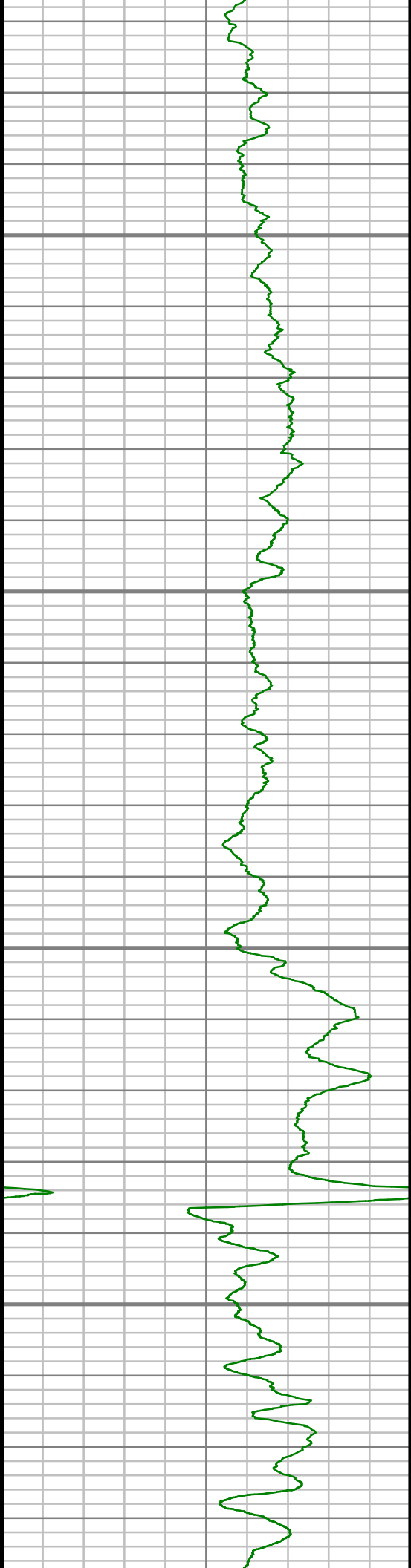
6500

6550

6600

6650



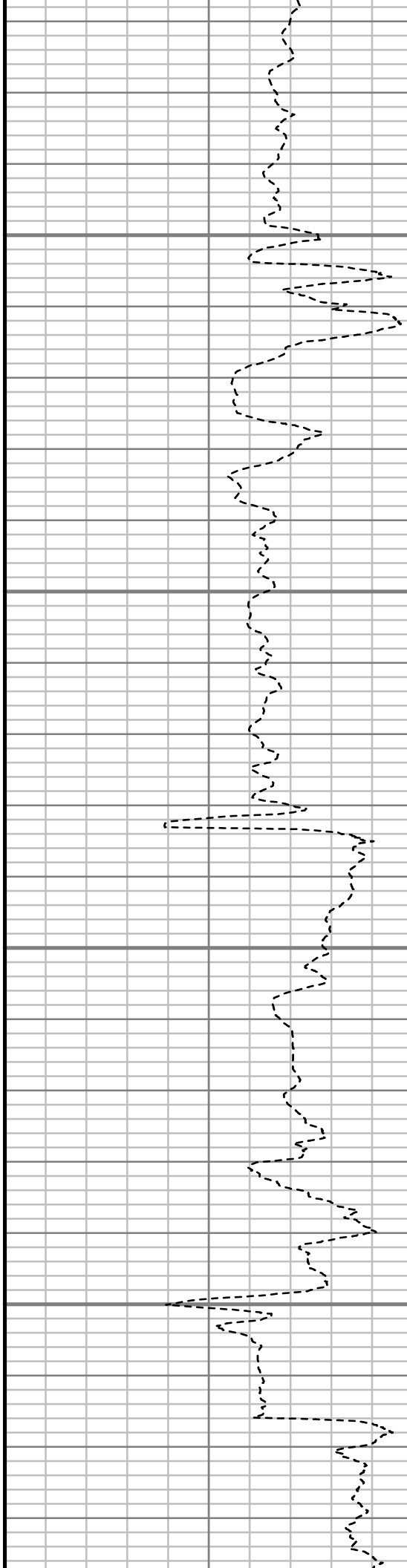


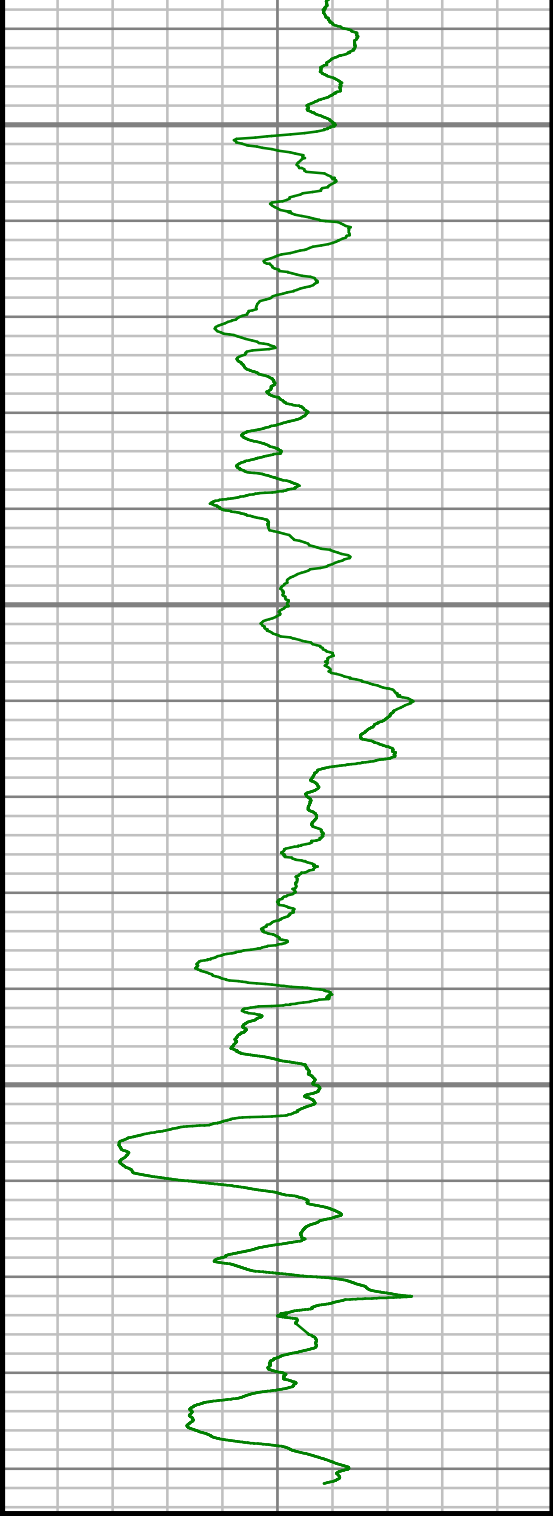
6700

6750

6800

6850





Gamma Ray (GR)

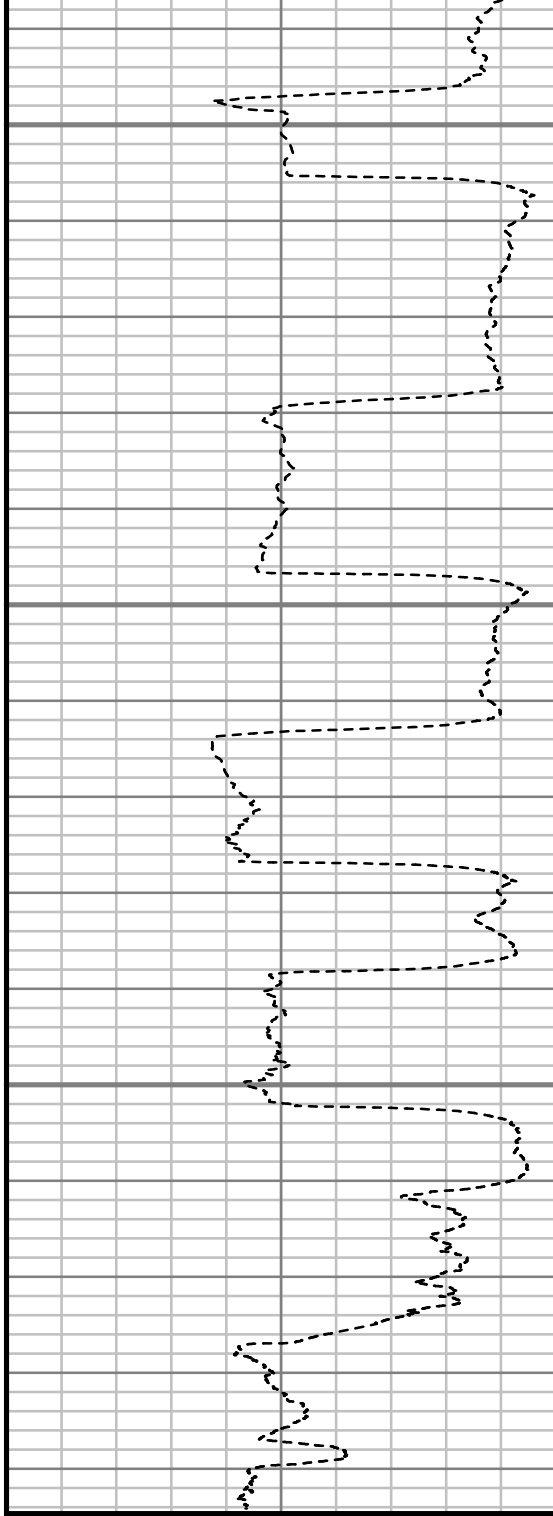
0 Unit = aapi 150

6900

6950

7000

TRUE VERTICAL DEPTH
1:240 (ft)



Rate of Penetration (ROP)

400 Unit = ft/hr 0

Comments



MWD Survey Report

Well Location	NEWNAM
Well Name	NEWNAM 2J-32H-C264
Survey Date	1/20/2015
Latitude	40°6'5.278"N
Longitude	104°34'42.193"W
Btotal	52497 nT
Dip	66.71 deg
Magnetic Declination	8.36 deg
North Reference	True North
Grid Correction	None
Depth Reference	RKB (13.00 ft)
Calculation Method	Minimum Curvature
Section (VS) Ref	0.00N (ft), 0.00E (ft), 180.00Azim (deg)
Operator(s)	J. PARISEE, M. SMITH, T. MORGAN

Well Notes

MD	Inc	Azim	TVD	VS	+N/-S	+E/-W	Closure Direction	Closure Distance	DLS
ft	deg	deg	ft	ft	ft	ft	deg	ft	"/100ft
0.00	0.00	0.00	0.00	0.00	0.00	0.00	0.00	0.00	Invalid
486.00	4.64	51.72	485.47	-12.19	12.19	15.45	51.72	19.68	0.96
517.00	5.12	55.36	516.36	-13.76	13.76	17.57	51.94	22.32	1.84
609.00	7.11	58.21	607.83	-19.09	19.09	25.79	53.49	32.09	2.19
702.00	10.69	62.53	699.69	-26.11	26.11	38.35	55.75	46.39	3.91
795.00	11.15	61.90	791.01	-34.32	34.32	53.93	57.53	63.93	0.50
888.00	10.47	61.55	882.36	-42.58	42.58	69.29	58.43	81.33	0.73
981.00	10.74	60.63	973.77	-50.86	50.86	84.27	58.89	98.43	0.34
1014.00	10.11	56.04	1006.23	-53.98	53.98	89.36	58.86	104.40	3.15
1178.00	10.29	53.74	1167.63	-70.70	70.70	113.12	58.00	133.39	0.27
1364.00	10.60	52.70	1350.55	-90.89	90.89	140.13	57.03	167.02	0.19
1552.00	10.51	50.32	1535.37	-112.32	112.32	167.08	56.09	201.32	0.24
1742.00	9.98	46.51	1722.34	-134.71	134.71	192.36	55.00	234.84	0.45
1933.00	9.56	53.03	1910.57	-155.65	155.65	217.04	54.35	267.08	0.62
2123.00	9.14	51.70	2098.05	-174.50	174.50	241.50	54.15	297.94	0.25
2314.00	8.04	57.81	2286.91	-191.02	191.02	264.72	54.19	326.44	0.75
2505.00	7.75	64.55	2476.10	-203.67	203.67	287.65	54.70	352.46	0.51
2695.00	8.20	54.15	2664.27	-217.12	217.12	310.20	55.01	378.64	0.79
2885.00	6.56	57.68	2852.69	-230.85	230.85	330.36	55.05	403.03	0.89

MD	Inc	Azim	TVD	VS	+N/-S	+E/-W	Closure Direction	Closure Distance	DLS
ft	deg	deg	ft	ft	ft	ft	deg	ft	°/100ft
3076.00	5.80	56.98	3042.58	-241.94	241.94	347.67	55.17	423.57	0.40
3266.00	2.32	34.31	3232.08	-250.35	250.35	357.89	55.03	436.76	1.98
3457.00	0.74	135.19	3423.03	-252.67	252.67	360.94	55.01	440.59	1.34
3647.00	1.05	121.31	3613.01	-250.89	250.89	363.29	55.37	441.51	0.20
3838.00	1.64	148.78	3803.96	-247.65	247.65	366.20	55.93	442.08	0.45
4028.00	1.72	147.42	3993.87	-242.92	242.92	369.15	56.65	441.90	0.05
4219.00	0.76	271.70	4184.85	-240.54	240.54	369.42	56.93	440.83	1.17
4409.00	0.91	291.59	4374.83	-241.13	241.13	366.75	56.68	438.92	0.17
4600.00	1.51	296.79	4565.78	-242.83	242.83	363.08	56.23	436.80	0.32
4790.00	1.95	279.69	4755.70	-244.50	244.50	357.66	55.64	433.25	0.35
4981.00	1.99	290.55	4946.58	-246.21	246.21	351.35	54.98	429.03	0.20
5171.00	2.48	349.29	5136.46	-251.40	251.40	347.50	54.12	428.91	1.17
5362.00	1.04	73.48	5327.39	-255.95	255.95	348.39	53.70	432.30	1.35
5552.00	1.90	47.91	5517.33	-258.55	258.55	352.38	53.73	437.05	0.56
5743.00	1.50	60.60	5708.24	-261.90	261.90	356.91	53.73	442.70	0.29
5933.00	1.16	84.40	5898.19	-263.32	263.32	361.01	53.89	446.84	0.34
6123.00	1.44	161.05	6088.16	-261.24	261.24	363.71	54.31	447.81	0.86
6276.00	1.45	156.44	6241.11	-257.64	257.64	365.11	54.79	446.86	0.08

MD	Inc	Azim	TVD	VS	+N/-S	+E/-W	Closure Direction	Closure Distance	DLS
ft	deg	deg	ft	ft	ft	ft	deg	ft	°/100ft
6315.00	1.16	134.89	6280.10	-256.91	256.91	365.58	54.90	446.83	1.45
6410.00	7.67	169.06	6374.77	-250.01	250.01	367.47	55.77	444.45	7.10
6505.00	13.50	179.64	6468.12	-232.68	232.68	368.74	57.75	436.02	6.44
6600.00	17.51	180.31	6559.65	-207.29	207.29	368.74	60.66	423.01	4.23
6695.00	23.29	184.99	6648.66	-174.26	174.26	367.03	64.60	406.29	6.32
6791.00	32.08	187.15	6733.58	-129.97	129.97	362.19	70.26	384.81	9.21
6886.00	44.31	184.26	6808.11	-71.62	71.62	356.57	78.64	363.69	13.01
6982.00	52.82	180.75	6871.60	0.20	-0.20	353.57	90.03	353.57	9.27
7077.00	63.23	180.24	6921.84	80.67	-80.67	352.89	102.88	362.00	10.98
7172.00	70.61	180.11	6959.05	168.01	-168.01	352.63	115.48	390.60	7.77
7267.00	77.09	179.90	6985.46	259.21	-259.21	352.62	126.32	437.64	6.82
7363.00	80.58	178.20	7004.04	353.36	-353.36	354.18	134.93	500.31	4.03
7441.00	85.80	178.90	7013.29	430.76	-430.76	356.14	140.42	558.92	6.75
7534.00	86.58	178.41	7019.47	523.53	-523.53	358.32	145.61	634.41	0.98
7627.00	88.15	179.18	7023.74	616.41	-616.41	360.27	149.70	713.97	1.88
7720.00	90.64	178.90	7024.72	709.38	-709.38	361.84	152.98	796.33	2.69
7813.00	90.40	180.05	7023.88	802.37	-802.37	362.69	155.68	880.54	1.26
7908.00	90.20	179.35	7023.37	897.37	-897.37	363.20	157.96	968.08	0.77

MD	Inc	Azim	TVD	VS	+N/-S	+E/-W	Closure Direction	Closure Distance	DLS
ft	deg	deg	ft	ft	ft	ft	deg	ft	°/100ft
8003.00	91.24	178.25	7022.18	992.34	-992.34	365.20	159.80	1057.40	1.59
8099.00	91.98	179.60	7019.48	1088.28	-1088.28	367.00	161.36	1148.49	1.60
8194.00	91.01	179.75	7017.00	1183.24	-1183.24	367.54	162.74	1239.01	1.04
8289.00	91.01	180.66	7015.33	1278.23	-1278.23	367.20	163.97	1329.93	0.95
8384.00	91.48	180.16	7013.27	1373.20	-1373.20	366.53	165.06	1421.28	0.72
8479.00	90.60	180.87	7011.54	1468.18	-1468.18	365.68	166.01	1513.04	1.19
8575.00	88.79	181.78	7012.05	1564.15	-1564.15	363.46	166.92	1605.82	2.12
8670.00	87.14	180.85	7015.42	1659.06	-1659.06	361.28	167.72	1697.94	1.99
8766.00	87.64	180.73	7019.79	1754.95	-1754.95	359.96	168.41	1791.49	0.54
8861.00	88.89	180.61	7022.66	1849.90	-1849.90	358.84	169.02	1884.38	1.32
8956.00	91.11	180.03	7022.65	1944.89	-1944.89	358.31	169.56	1977.62	2.41
9051.00	90.64	178.73	7021.20	2039.87	-2039.87	359.34	170.01	2071.28	1.46
9146.00	91.75	179.01	7019.23	2134.83	-2134.83	361.20	170.40	2165.17	1.20
9241.00	91.41	178.26	7016.61	2229.77	-2229.77	363.46	170.74	2259.20	0.87
9337.00	91.04	177.90	7014.55	2325.69	-2325.69	366.67	171.04	2354.42	0.54
9432.00	90.10	176.66	7013.61	2420.58	-2420.58	371.18	171.28	2448.87	1.65
9527.00	89.53	178.67	7013.91	2515.49	-2515.49	375.05	171.52	2543.30	2.20
9622.00	88.76	178.58	7015.33	2610.45	-2610.45	377.33	171.78	2637.58	0.82

MD	Inc	Azim	TVD	VS	+N/-S	+E/-W	Closure Direction	Closure Distance	DLS
ft	deg	deg	ft	ft	ft	ft	deg	ft	°/100ft
9718.00	90.94	177.40	7015.58	2706.39	-2706.39	380.70	171.99	2733.03	2.59
9813.00	90.37	180.51	7014.50	2801.35	-2801.35	382.43	172.23	2827.34	3.33
9908.00	89.66	184.11	7014.47	2896.26	-2896.26	378.60	172.55	2920.90	3.85
10003.00	89.09	181.40	7015.50	2991.14	-2991.14	374.03	172.87	3014.43	2.91
10098.00	89.46	180.83	7016.69	3086.11	-3086.11	372.18	173.12	3108.47	0.71
10194.00	90.87	181.14	7016.41	3182.09	-3182.09	370.52	173.36	3203.59	1.50
10289.00	91.34	181.75	7014.58	3277.04	-3277.04	368.13	173.59	3297.65	0.81
10384.00	89.33	181.64	7014.02	3371.99	-3371.99	365.32	173.82	3391.73	2.12
10480.00	89.80	181.48	7014.75	3467.96	-3467.96	362.70	174.03	3486.87	0.51
10575.00	88.59	181.33	7016.09	3562.92	-3562.92	360.37	174.22	3581.09	1.28
10670.00	89.33	180.90	7017.81	3657.88	-3657.88	358.53	174.40	3675.41	0.90
10765.00	89.97	180.08	7018.40	3752.88	-3752.88	357.71	174.56	3769.88	1.09
10860.00	89.63	181.11	7018.73	3847.87	-3847.87	356.73	174.70	3864.37	1.13
10956.00	88.56	180.94	7020.25	3943.84	-3943.84	355.02	174.86	3959.79	1.13
11051.00	88.76	180.23	7022.48	4038.81	-4038.81	354.05	174.99	4054.30	0.77
11146.00	87.15	180.20	7025.87	4133.74	-4133.74	353.69	175.11	4148.85	1.70
11242.00	87.08	179.81	7030.71	4229.62	-4229.62	353.68	175.22	4244.38	0.41
11337.00	87.21	179.06	7035.44	4324.50	-4324.50	354.61	175.31	4339.01	0.80

MD	Inc	Azim	TVD	VS	+N/-S	+E/-W	Closure Direction	Closure Distance	DLS
ft	deg	deg	ft	ft	ft	ft	deg	ft	°/100ft
11432.00	87.21	179.02	7040.06	4419.37	-4419.37	356.20	175.39	4433.70	0.05
11455.00	87.32	178.66	7041.16	4442.34	-4442.34	356.67	175.41	4456.64	1.64

MD	Inc	Azim	TVD	VS	+N/-S	+E/-W	Closure Direction	Closure Distance	DLS
ft	deg	deg	ft	ft	ft	ft	deg	ft	°/100ft

5" = 100' FEET TVD